

MTC Express Lanes – Lessons Learned After 5 Years of Planning and Developing a Network

15th International Conference on Managed Lanes
May 6, 2016

John Lowery – Senior Engineer, WSP | Parsons
Brinckerhoff

Lisa Klein – Express Lanes Program Manager,
Metropolitan Transportation Commission



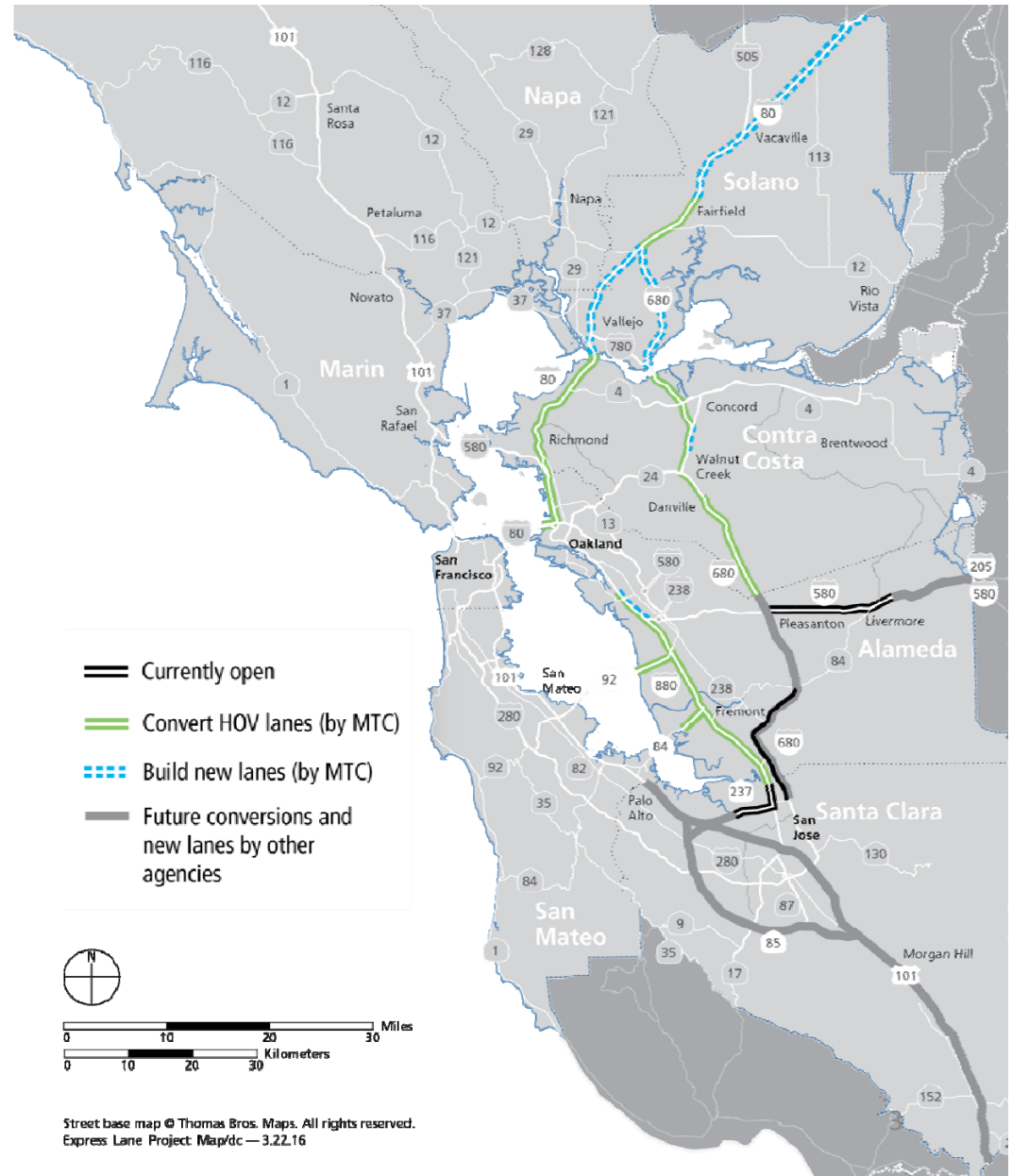
Discussion Topics

- The Network Vision
- Where We Are Now
- Key Lessons Learned



MTC Express Lanes Network

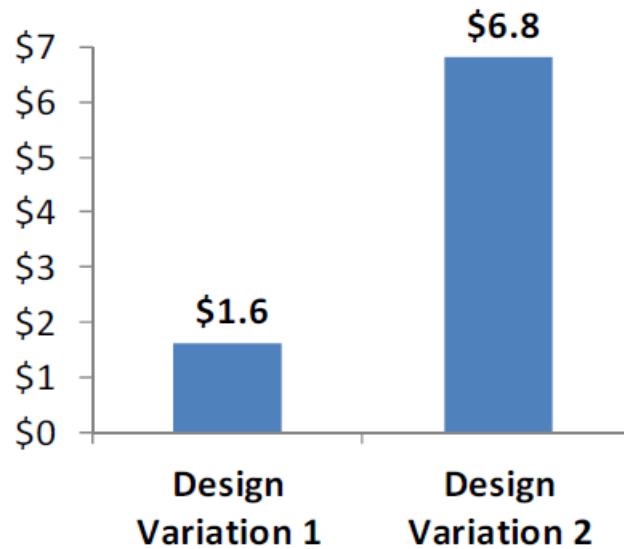
- 270 miles
 - Conversions: 150 miles
 - New lanes: 120 miles
- Phased buildout over 20-25 years



Planning the Network

Cost

Capital Cost Range
(Billions of 2010\$)



*Narrow footprint;
lowest cost*

*Full standard;
highest cost*

Schedule

**Start with
Conversions**
2015-2020

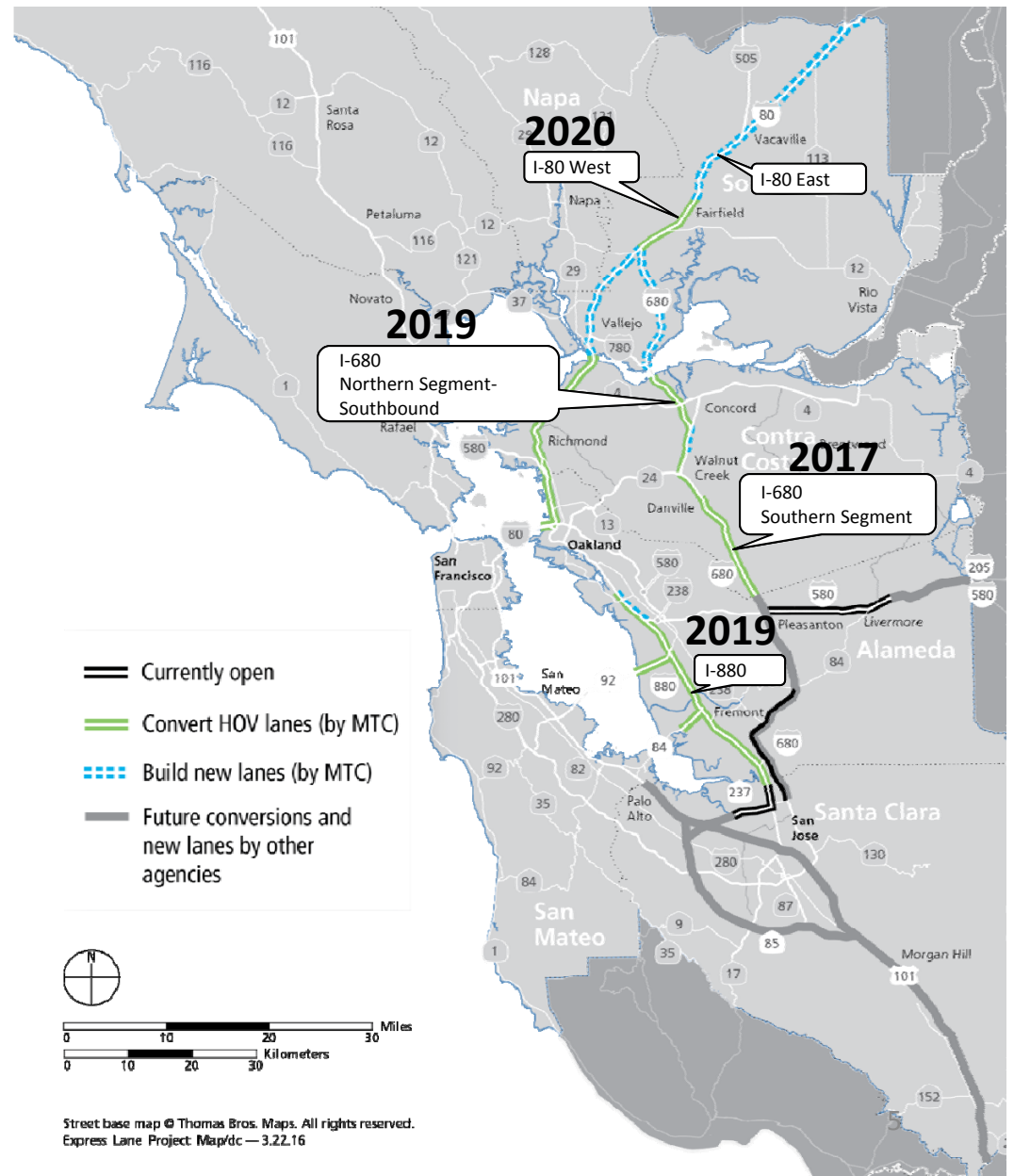
**Fill in Gaps
Second**
2020-2025

**Build Extensions
and Direct
Connectors Last**
2025-2035



Current Status – 5 Years Later

- 4 corridors under development



Separation of Corridors

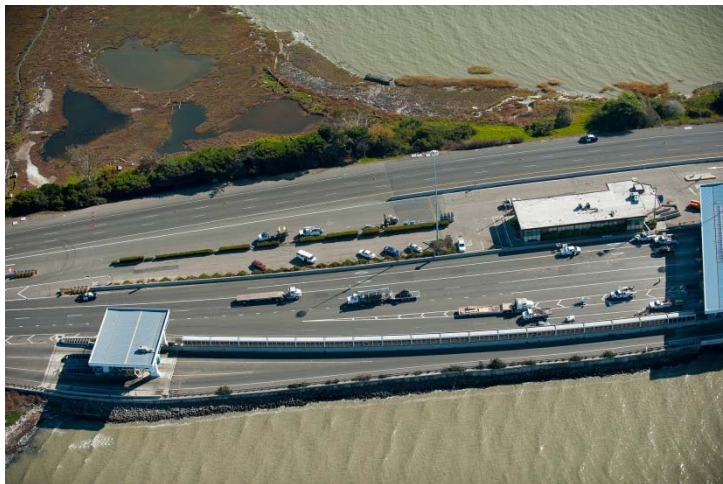
I-680



I-880



Bridge Approaches



Variations in Access



Implications:

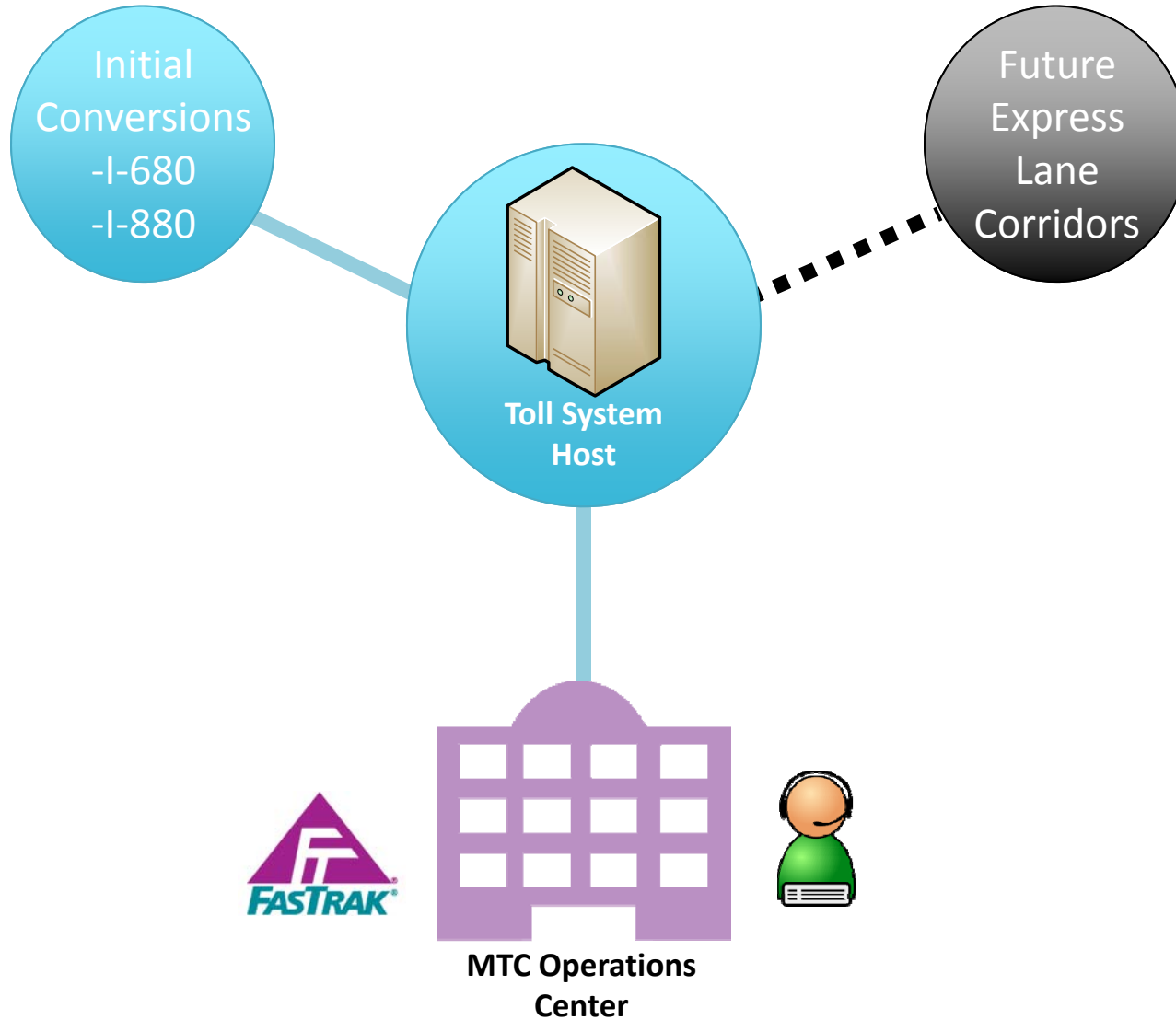
- Signage
- Public message
- Cost



Communications Network



System Integrator



Conclusions

- It is hard to channel the network concept from planning into delivery
- Specific simplifying assumptions in network planning phase have significant impacts on cost, schedule and phasing

