



---

# Florida Express Lanes Handbook

---

May 5, 2016

# Authority to Implement Express Lanes

---



FS 338.151 authority to implement toll

FS 338.166 directs how to use toll revenues

Rule 14-100.003 FAC establishes Express Lanes tolling criteria

Topic No. 525-030-020-a, Tolling Directive sets the policy

# FDOT's Express Lanes Vision

---

**“In an effort to better manage congestion and provide choices to drivers, Express Lanes are required for additional capacity on limited access facilities on the SHS where deemed appropriate”**

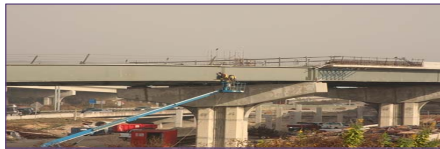


# The Present

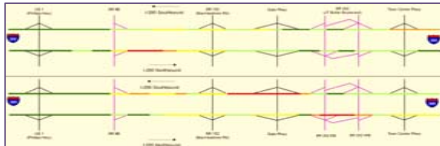
---



**31 miles of Express Lanes in operation**



**108 miles of Express Lanes under construction**



**293 miles of Express Lanes in Planning**

# Guidance Needed

---

Express Lanes concept is evolving within Florida



More specific guidance needed at both state and national levels



Need for policy guidance in the planning process

# Express Lane Handbook



# Brief History

- Express Lanes Directive
- No criteria or Standards in PPM
- Established nationwide standards
- Guidance needed for designers and planners



# Handbook Contributors

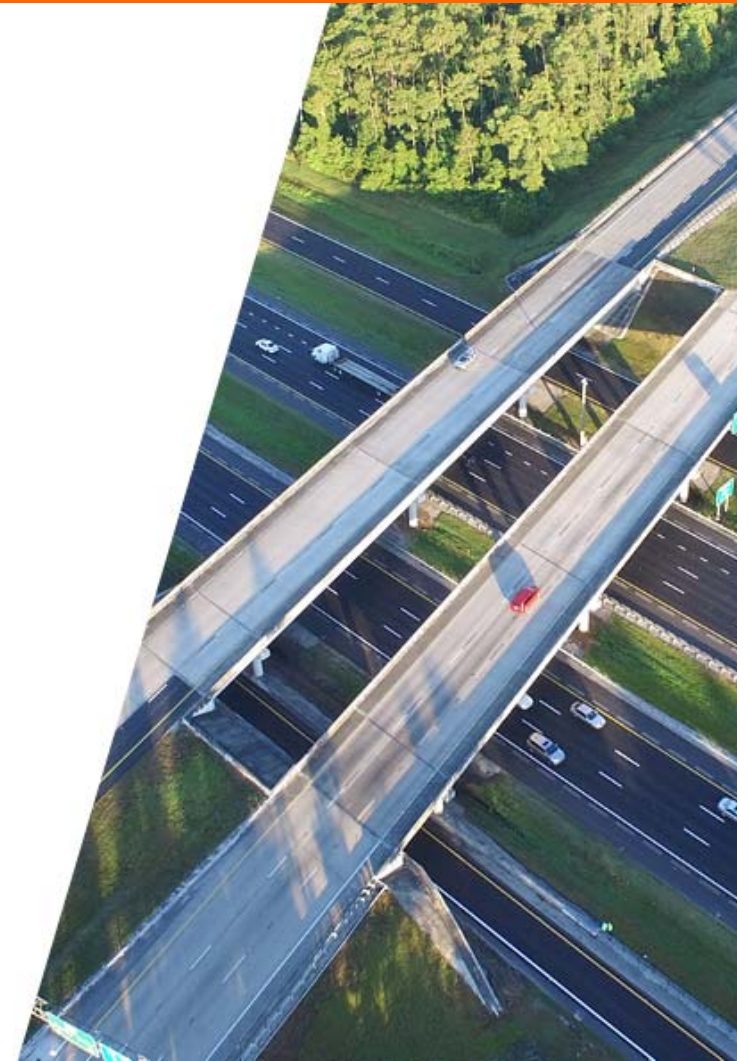
- FDOT Central Office
- Florida's Turnpike Enterprise
- Atkins
- HNTB
- Kimley-Horn





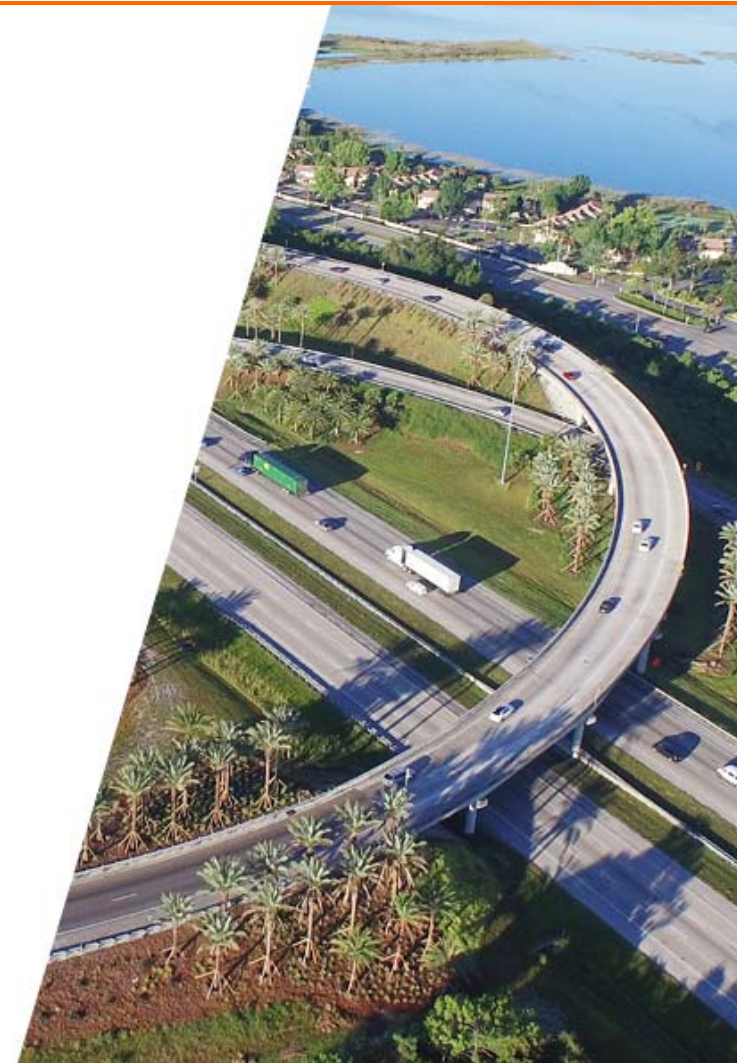
# Initial Review

- 7 Districts and Turnpike
- Minimal Policy
- Minimal Guidance
- Most information already existed elsewhere

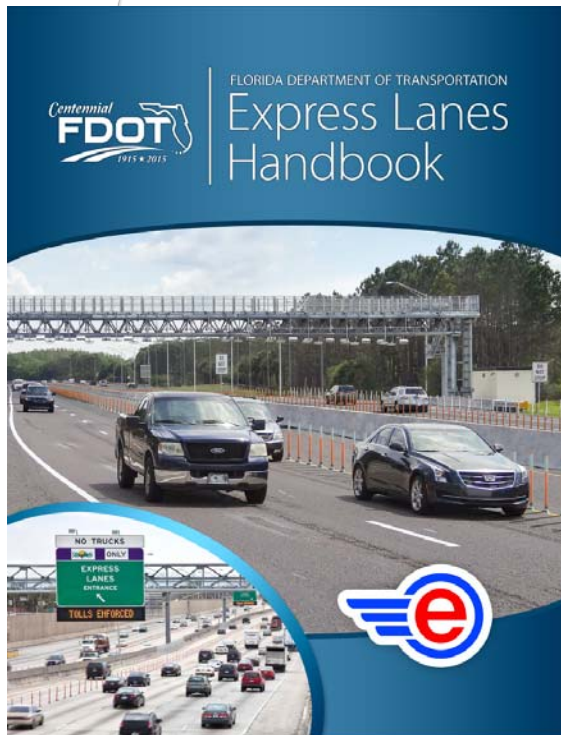


# Reorganization

- Turnpike Assistance
- Florida Specific Policy
- Comment Incorporation
- Second Review by Districts



# Express Lanes Handbook

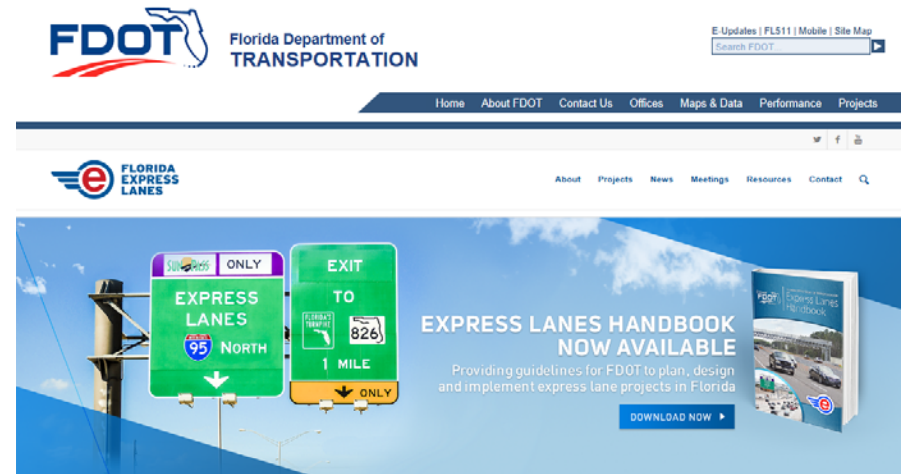


- Provides Florida specific guidelines
- Answers important questions related Express Lanes projects development
- Not a one size fits all
- Guidance on planning, implementation and operations





# Living Document

- Florida Express Lanes website
- Annual Policy Review
- Design Updates



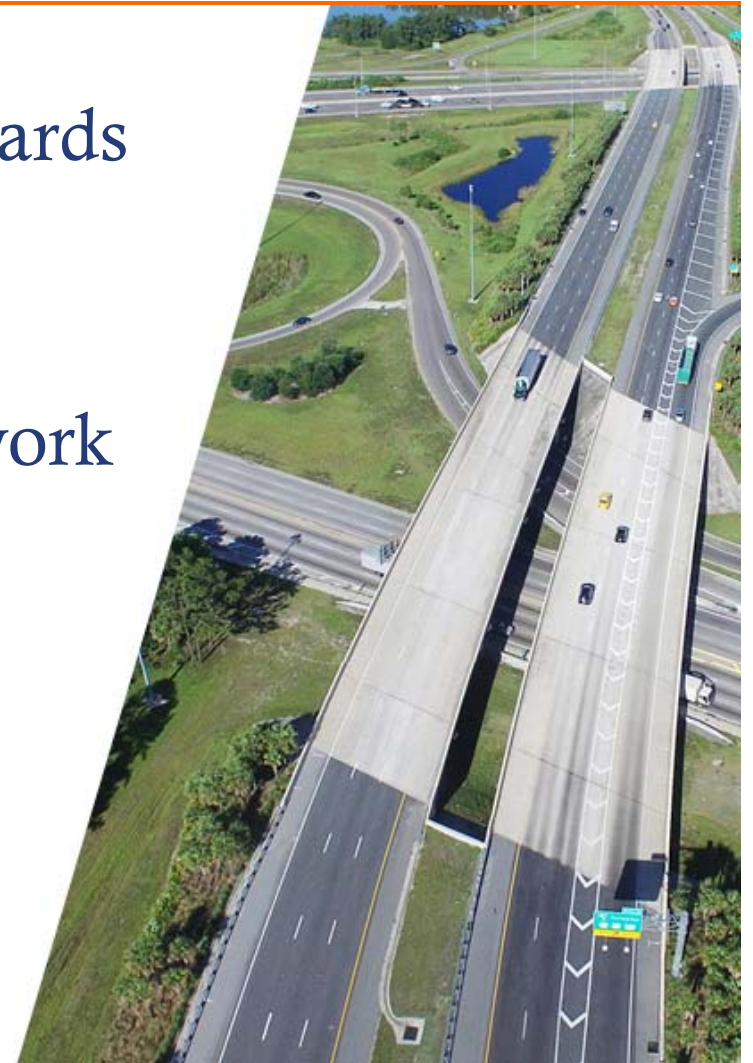
Welcome to Florida Express Lanes, a transportation solution using managed lanes to increase efficiency on today's high-demand roadways. Florida Department of Transportation (FDOT) is implementing Express Lanes throughout Florida, designed to alleviate highway congestion by providing drivers with options for travel lane preferences.

 <b>UPCOMING MEETINGS</b> Stay informed with the latest on express lanes through our district visits and webinars.	 <b>PROJECT MAP</b> Get to know the projects currently in planning and in operation throughout the state.	 <b>RESOURCE LIBRARY</b> All the tools you need, from brochures and reports to articles and videos.
---	--	--



# Next Steps

- Establish applicable design standards and criteria
- Establish operating standards
- Develop Sketch ROI tool framework
- Develop Express Lanes travel demand modeling framework
- Automated vehicle technology





Florida Highway Systems Management

**Jennifer Fortunas, P.E.**

Systems Management Manager

FDOT – Systems Planning Office

605 Suwannee Street, MS 57

Tallahassee, Florida 32399

Phone: 850-414-4909 | Fax: 850-414-4876

Email: [jennifer.fortunas@dot.state.fl.us](mailto:jennifer.fortunas@dot.state.fl.us)

Web: [Systems Planning](#) | [Express Lanes](#)



**You Snooze, You Lose – Don't Drive Drowsy**

<http://www.floridaexpresslanes.com/>