

VIRGINIA AUTOMOBILE & BICYCLE CRASH SAFETY ANALYSIS

Erin Robartes

Master's Candidate

T. Donna Chen, PE, PhD

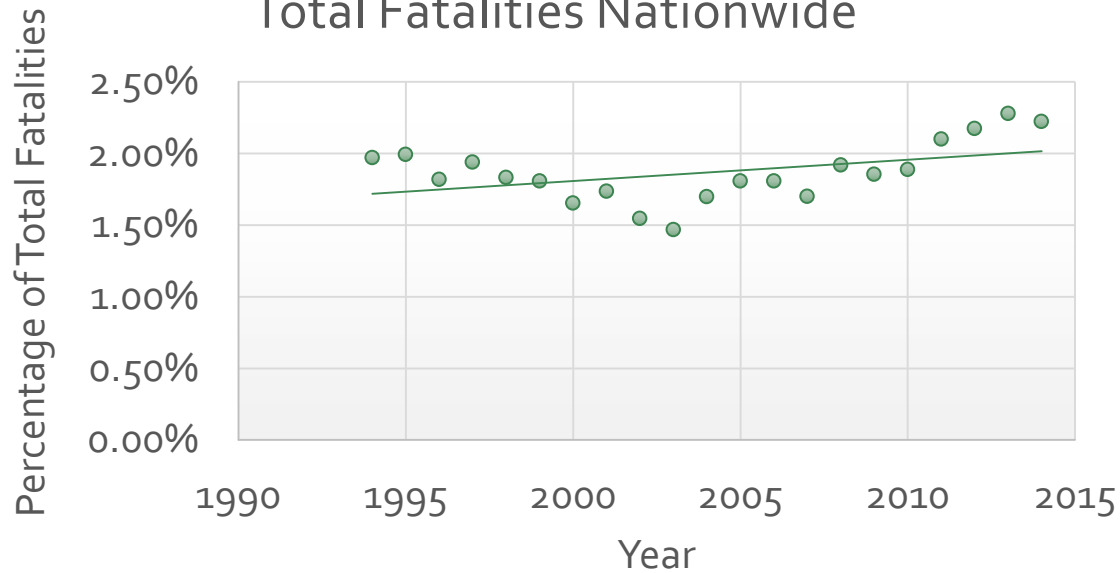
Assistant Professor

University of Virginia

MOTIVATION

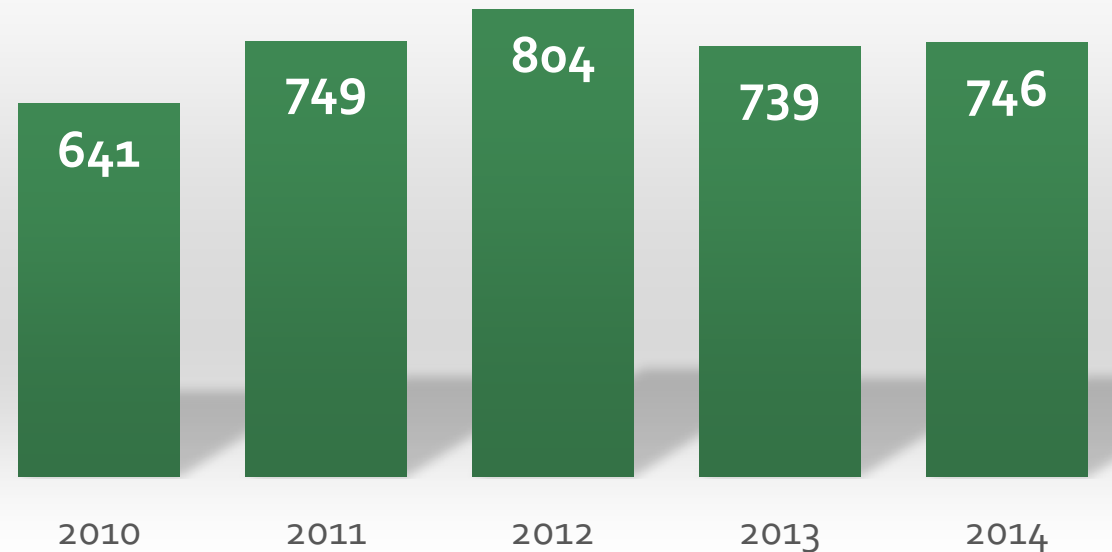


Pedalcyclist Fatalities as Percentage of Total Fatalities Nationwide



Source: Fatality Analysis Reporting System

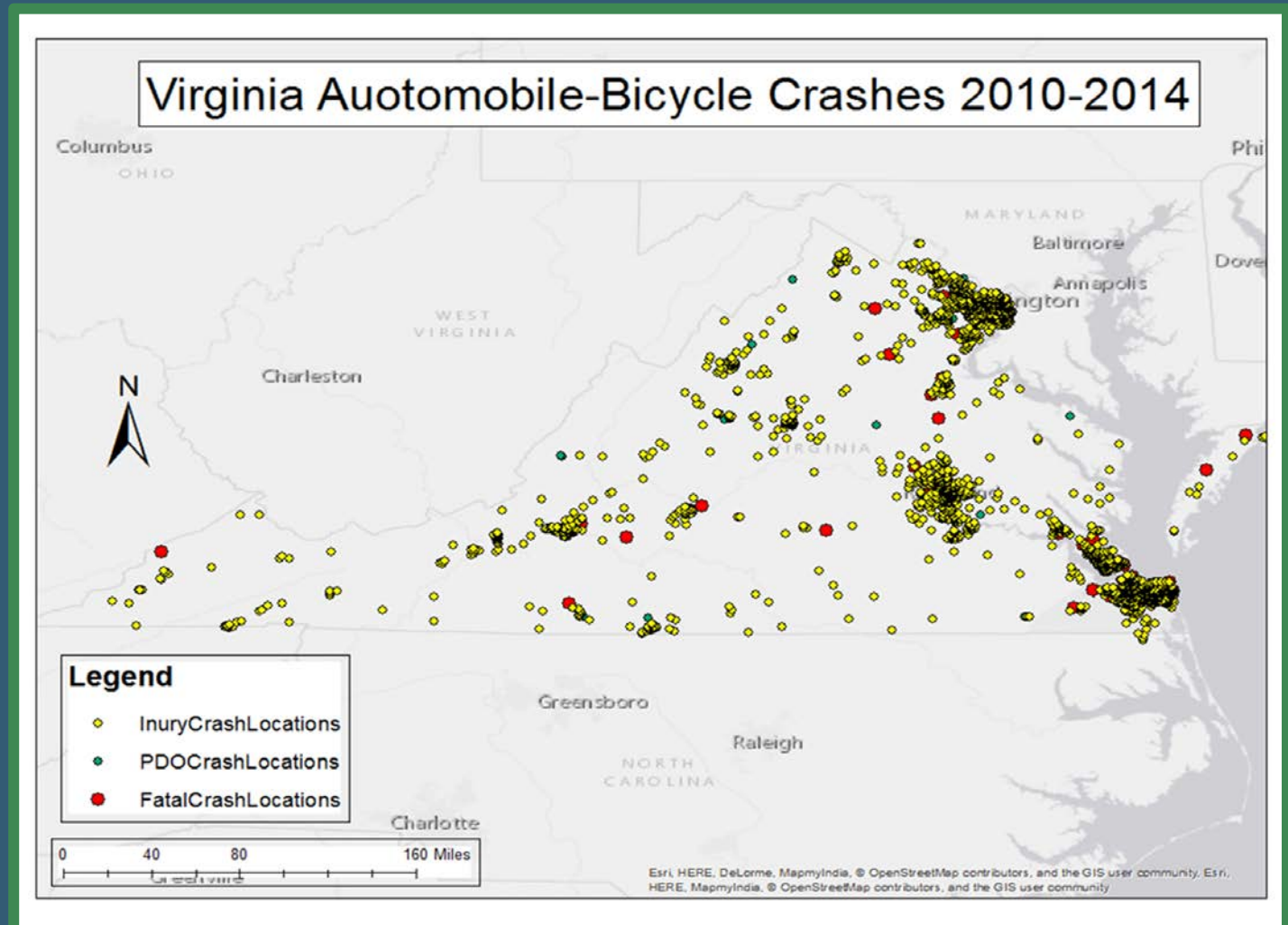
Total Automobile-Bike Crashes in Virginia



Source: Virginia Department of Motor Vehicles

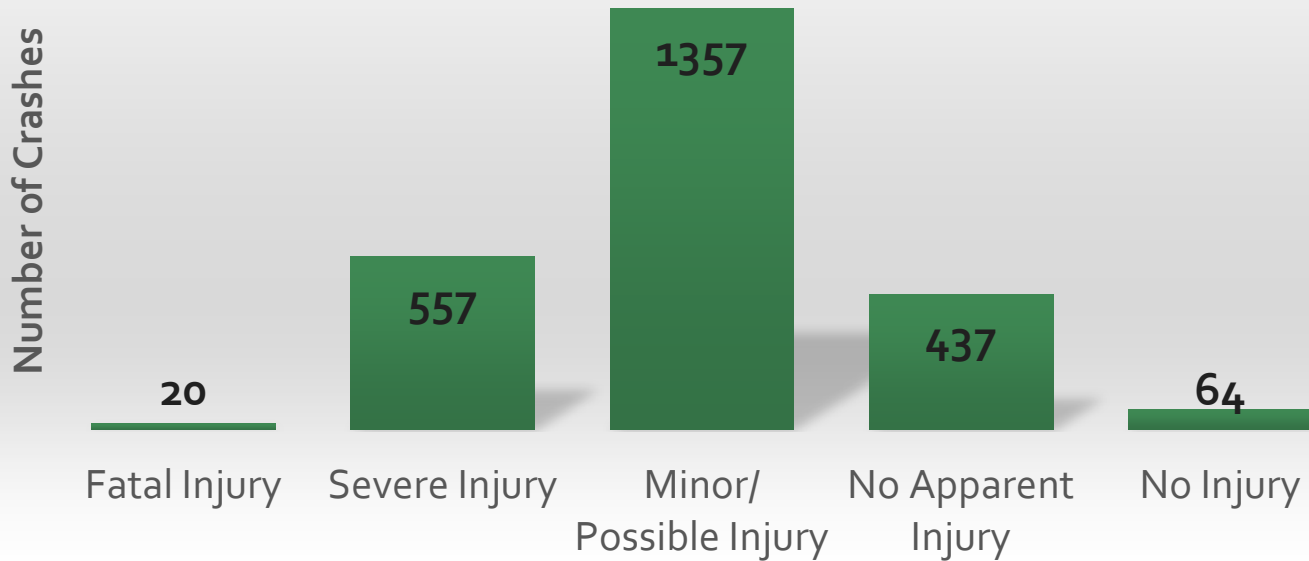
DATA CHARACTERISTICS

- Virginia **police crash** reported data
- **Single automobile - single bicycle** crashes
- 2010-2014
- **2435** observations
- Analyzed **bicyclist, automobile driver, vehicle, environmental, and roadway** characteristics that influence crash safety

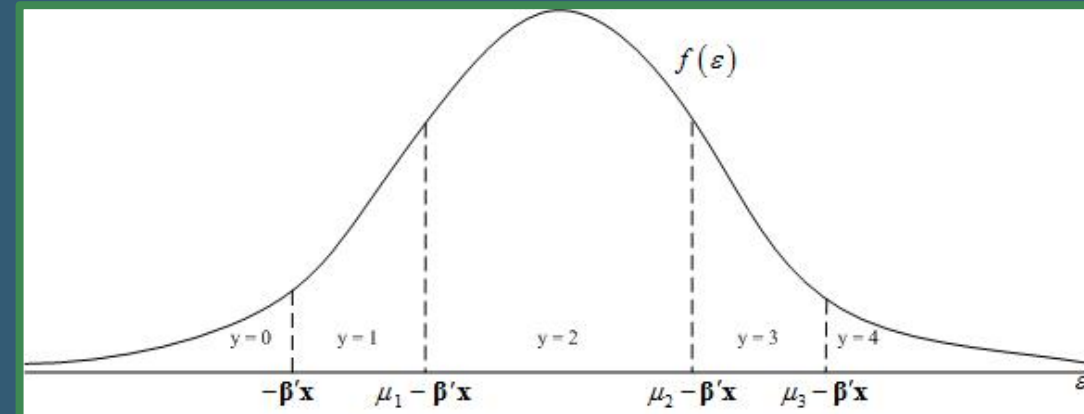


METHODOLOGY

Injury Severity Distribution of Virginia
Automobile-Bicycle Crashes 2010-2014



Ordered Probit Model



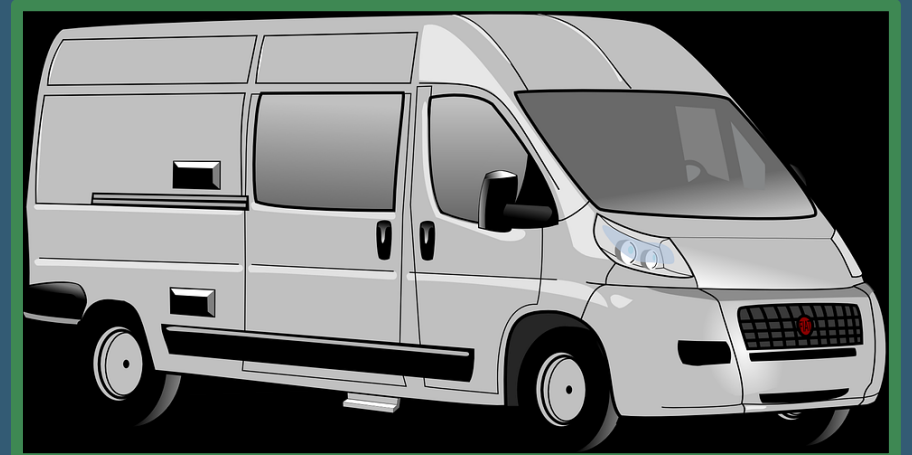
$$\begin{aligned} \gamma_0 &= -0.13 \\ \gamma_1 &= -2.88 \\ \gamma_2 &= -1.06 \\ \gamma_3 &= 0.55 \\ \gamma_4 &= 1.68 \end{aligned}$$

FACTORS THAT INFLUENCE CYCLIST INJURY SEVERITY

- Driving & biking under the **influence**
- Higher automobile & bicycle **speeds**
- **Larger vehicles** (SUVs, vans, and trucks)
- Horizontal **curves** & vertical **grades**
- **Divided** & **one-way** roads



www.houstondwiattorney.net



QUESTIONS?



T. Donna Chen, PE, PhD

tdchen@virginia.edu

cee.virginia.edu/tdonnachen

Erin Robartes

emr4xb@virginia.edu