

Crossing One-way Vs. Two-way Simulated Traffic: Differences In Crash Risk Among Adolescent Bicyclists

Elizabeth O'Neal
University of Iowa

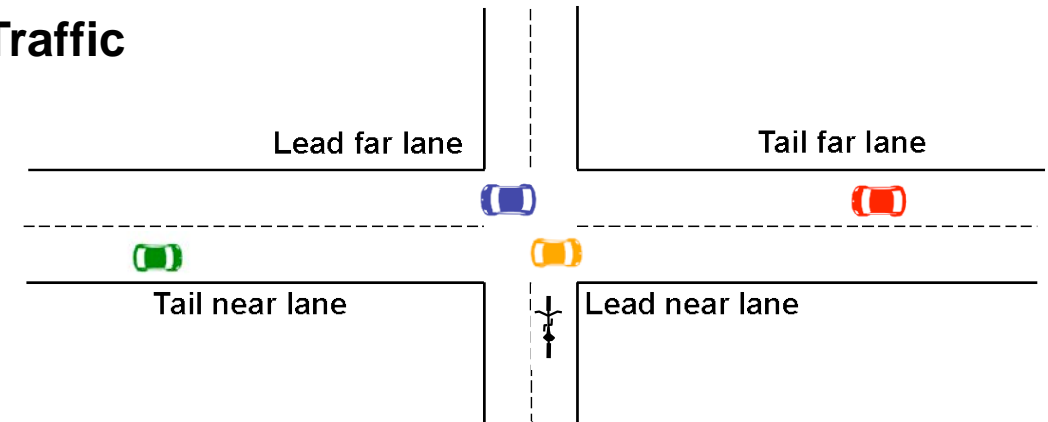
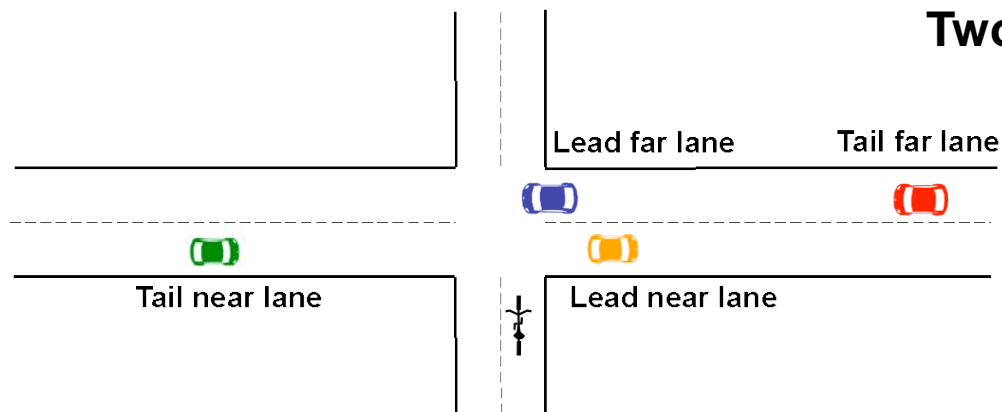
Background/Research Questions



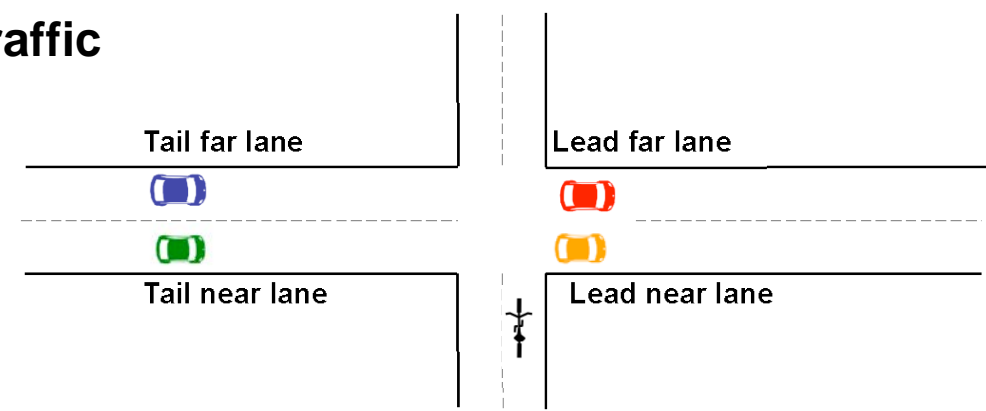
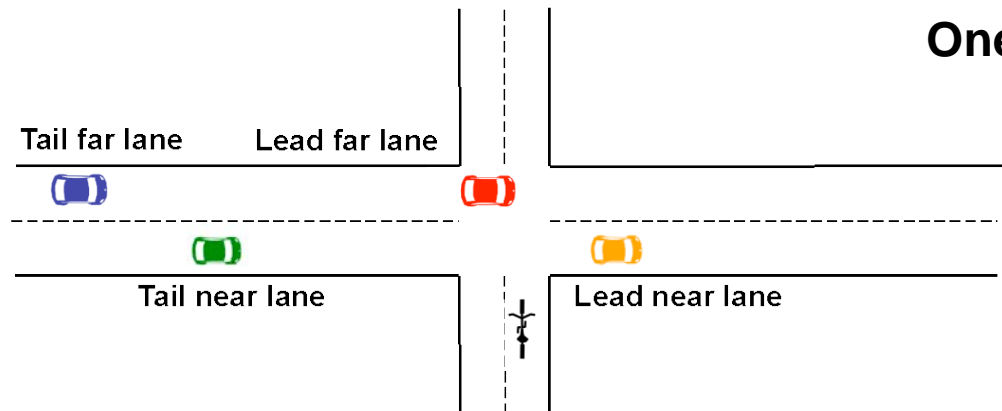
Rolling Gap

Aligned Gap

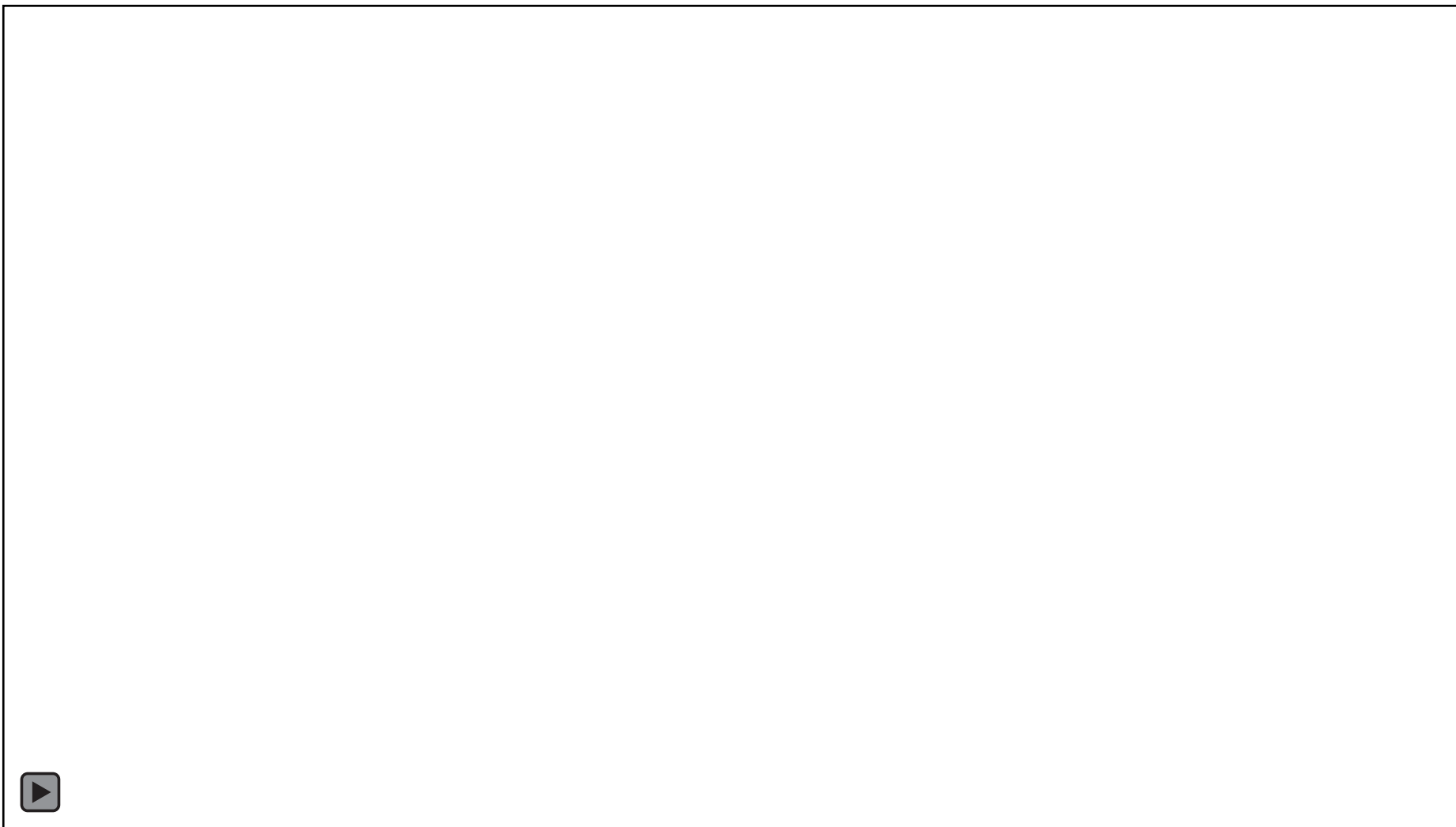
Two-Way Traffic



One-Way Traffic



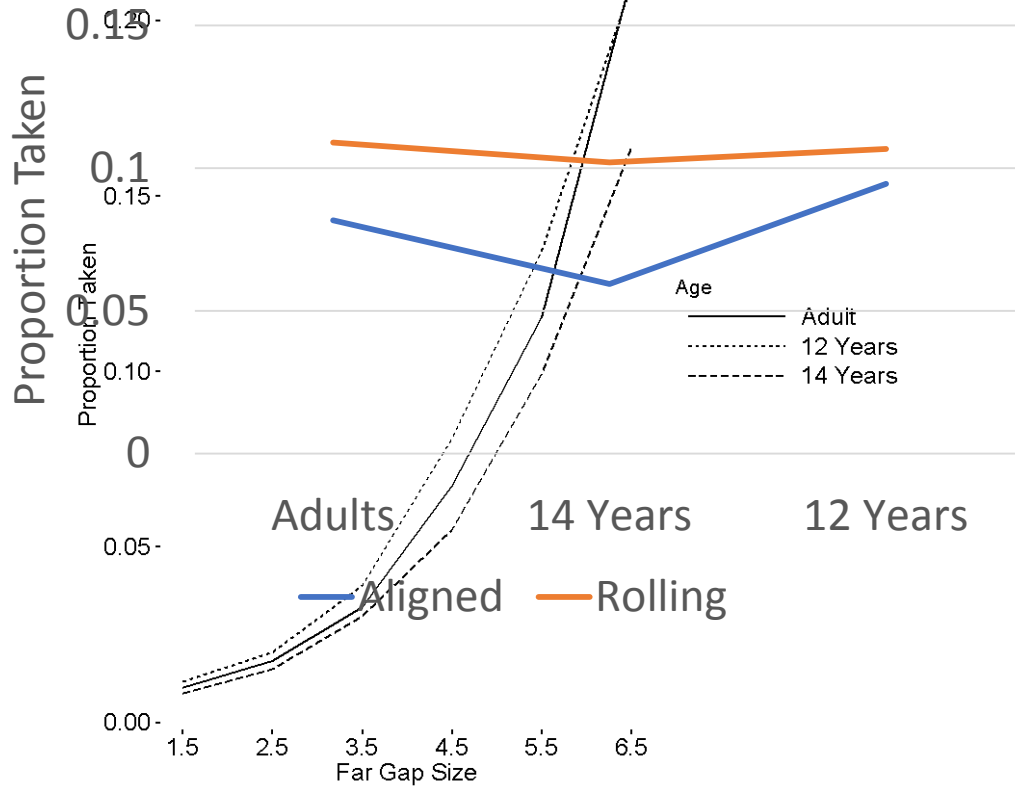
Method



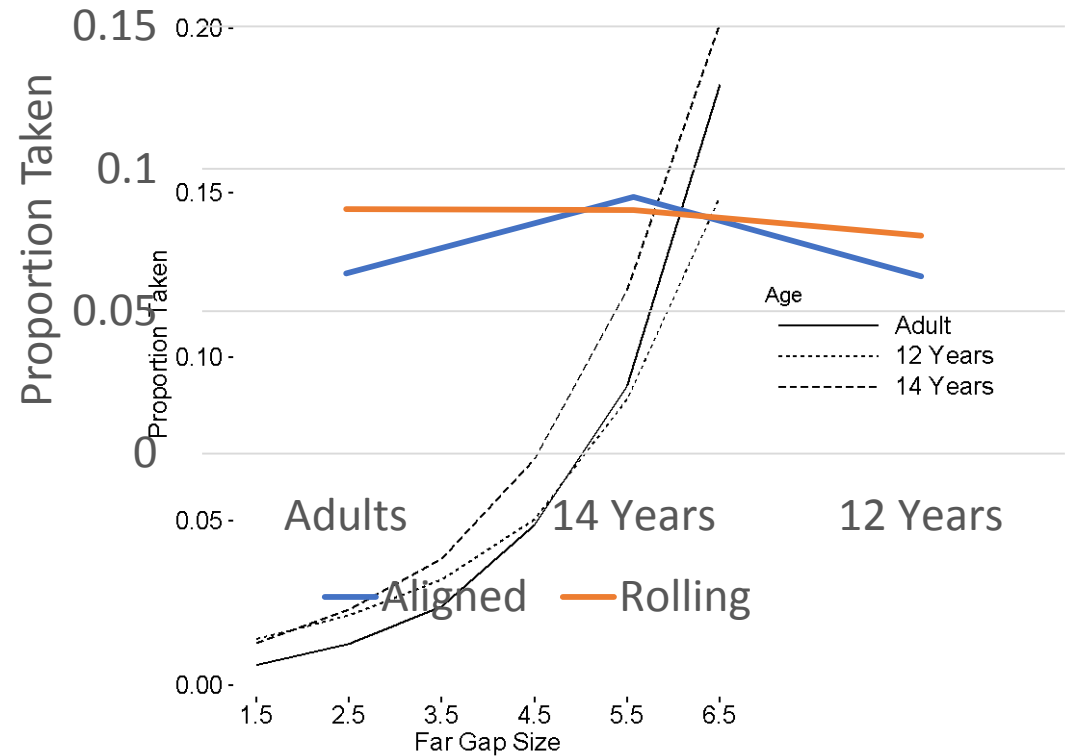
Gap Selection



One- Way Traffic



Two-Way Traffic

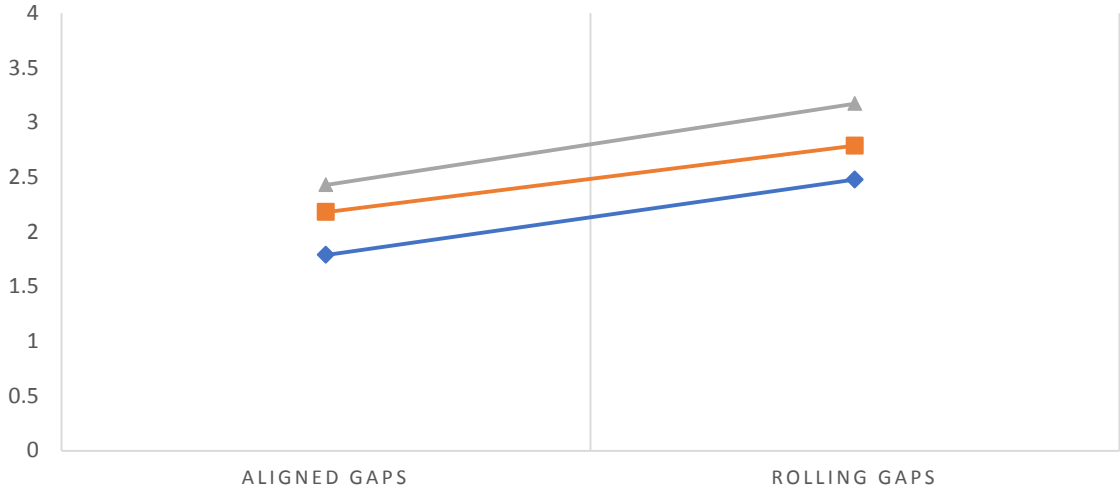


Time to Spare



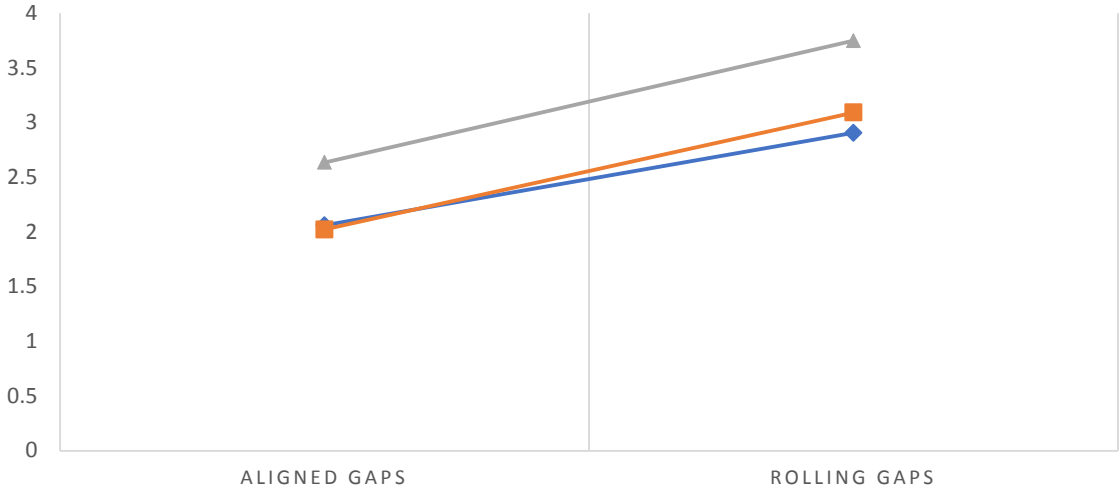
ONE WAY

◆ 12-year-olds ■ 14-year-olds ▲ Adults



TWO WAY

◆ 12-year-olds ■ 14-year-olds ▲ Adults



Future Research Needs



- Behavioral risk factors that put people at risk for motor-vehicle crashes
- How road treatments influence those behaviors
- How people interact with the roadway environment
- Simulation based research

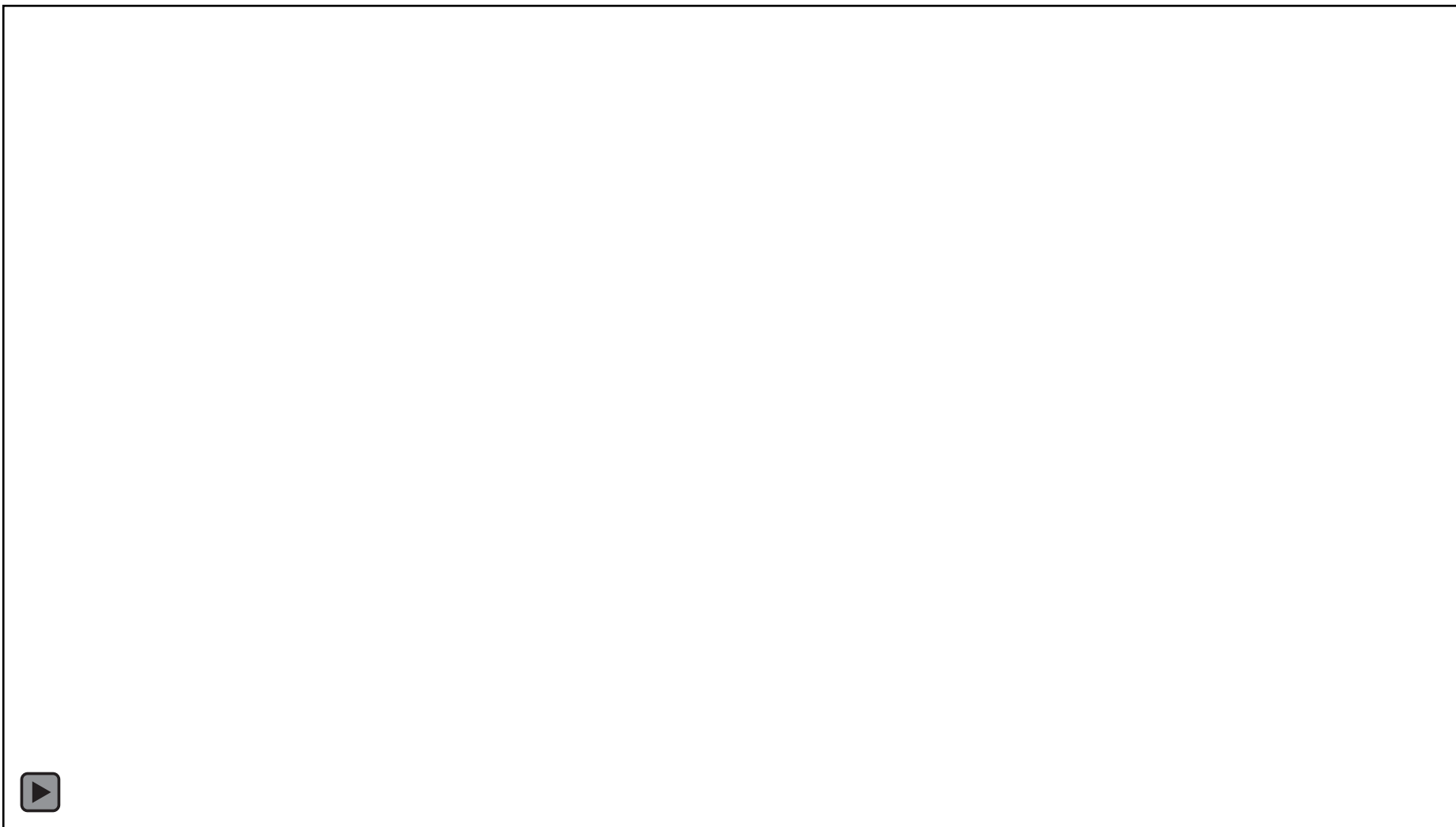
Implications for Practice



- A need for training and safety awareness
- Road treatments



Method



Timing of Entry

