



TransLink's CAPITAL-M Program

Vikki Kwan, Senior Manager
Asset & Program Management
TransLink, B.C., Canada

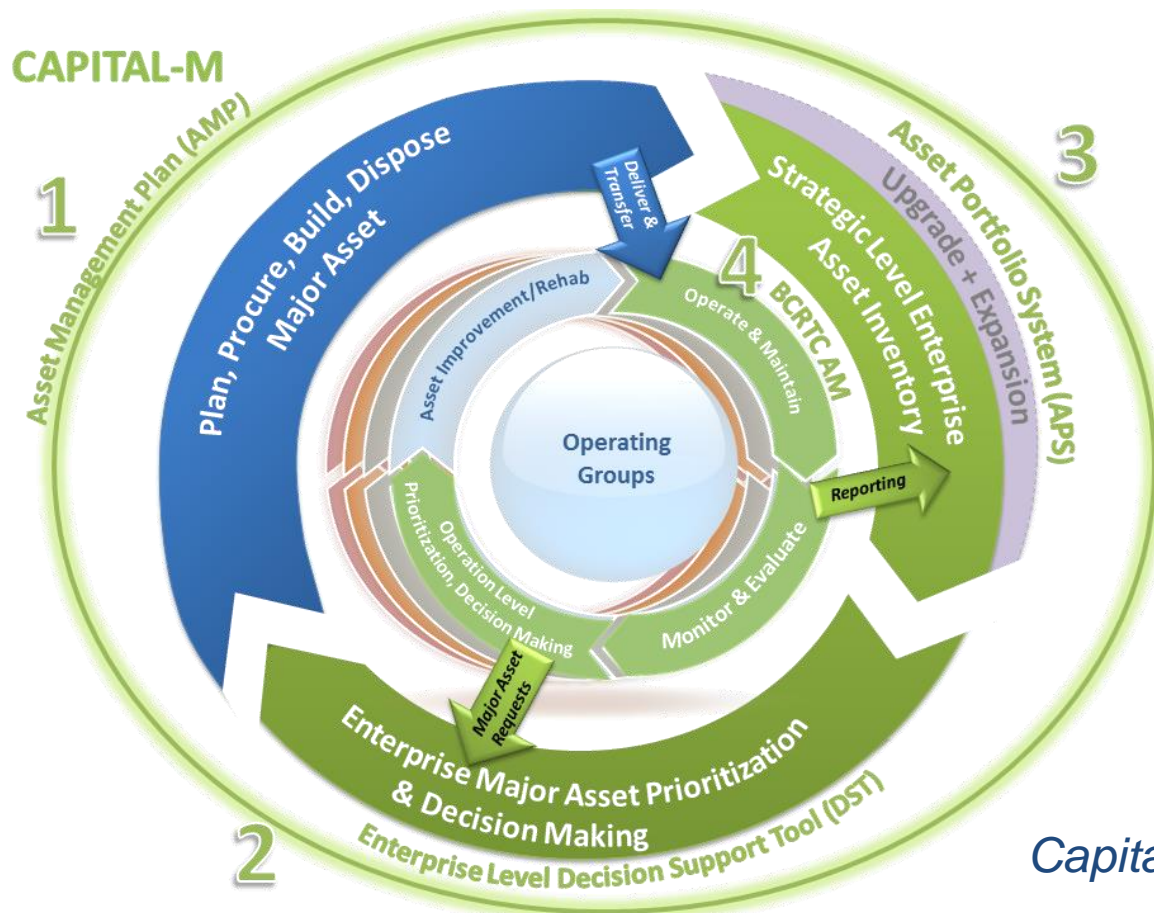
TransLink: Our Assets

South Coast British Columbia Transportation Authority



TransLink's Enterprise Asset Management Program

CAPITAL-M Program launched in August 2015



- ✓ *Proactive Asset Management*
- ✓ *Cross-Enterprise Partnership*
- ✓ *Support / Buy in*

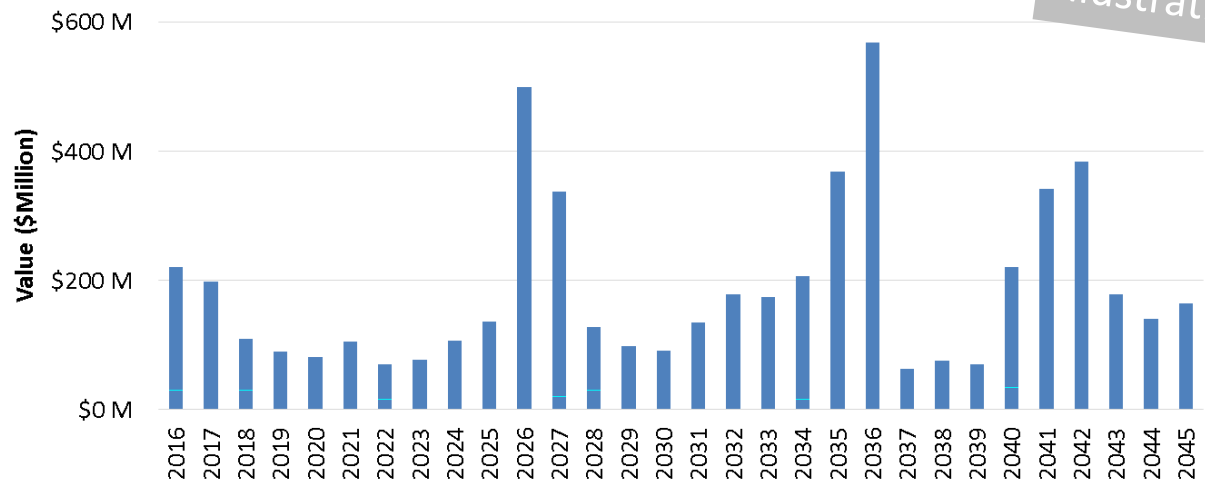
*Steered by TransLink's
Capital Management Committee*

CAPITAL-M

Asset Portfolio System (APS) Initiative

- Capital-level **Asset Inventory** (*Version 1.0*)
- **Asset renewal programs** for selected asset types (*Version 1.0*)
- Long term asset renewal needs forecast

Capital Asset Reinvestment Needs



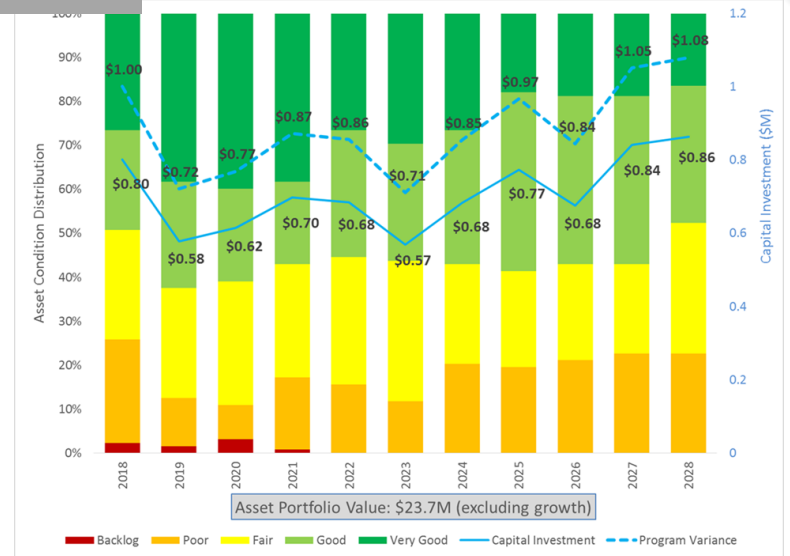
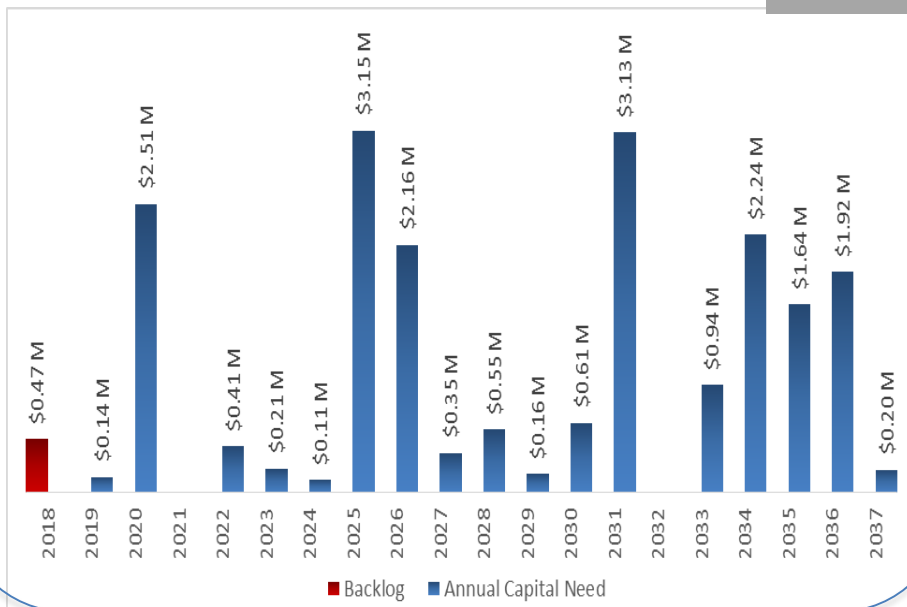
CAPITAL-M

Asset Renewal Programs (ARPGs) Initiative



- ~31 Asset Classes (over 3-4 years)
 - Asset data readiness
 - Business Impact / Criticality
 - Capital plan needs
- Pilot & Continuous Improvement

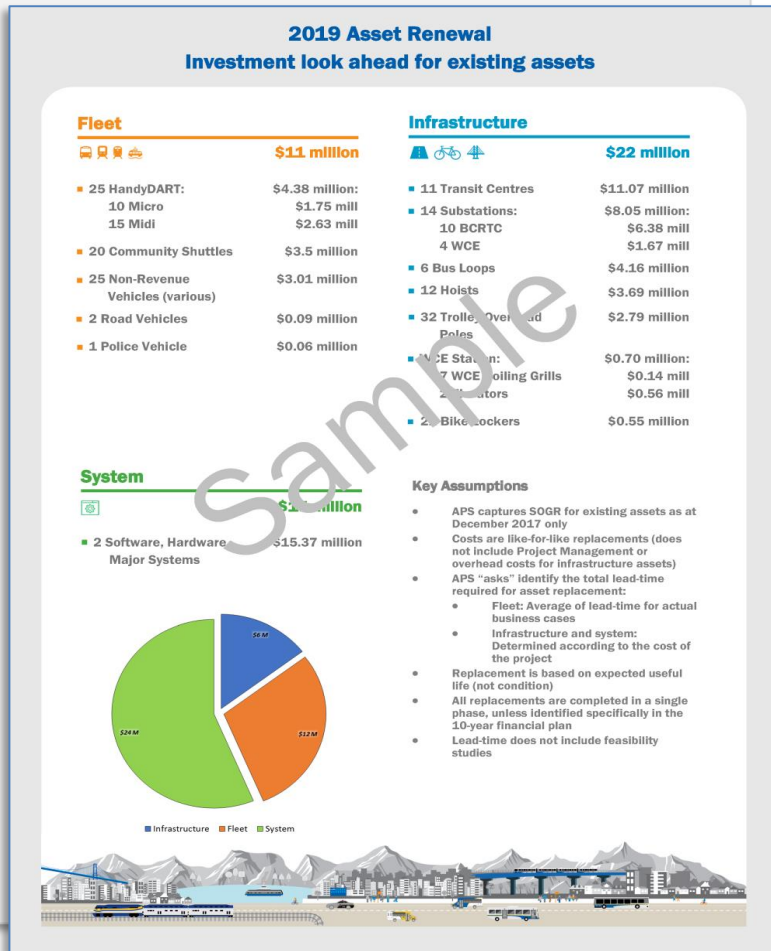
Illustration Only



CAPITAL-M

Asset Renewal Plan Initiative

- Support 10-year SoGR Investment Outlook (*Pilot & Continuous Improvement*)
 - Financial foresight
 - Justifiable / Data Driven
 - Enterprise Consistency
- Considering:
 - Long term asset renewal needs
 - Service impact / resources



BCRTC Asset Management Project

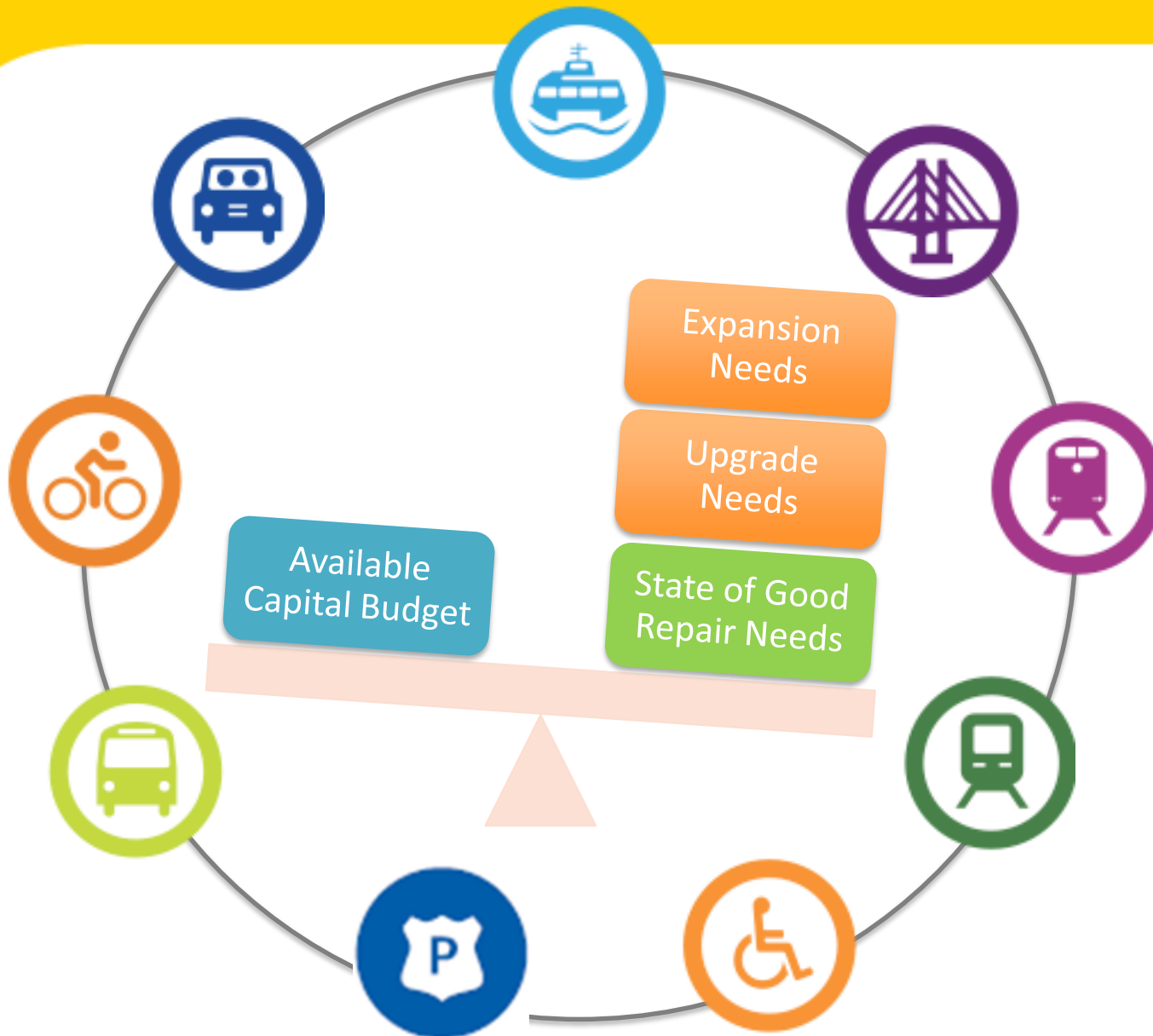
Key Project Objectives*

- Develop and maintain records (tangible assets, inventory, etc.)
- Review performance and Life Cycle Costs
- Achieve continuous improvement in asset management processes
- Provide planned and scheduled maintenance activities
- Provide key information to the financial system through system integration

Project Scope*

This project will implement a modern **Asset Management Software**, with asset management **processes for the AM Software**, and populate **asset data into the System** while working with all stakeholders to effectively manage the **organizational change**.

Which Capital Project Asks to Fund?



Decision Support Framework:

- ✓ Consistent framework
- ✓ Justifiable
- ✓ Align with Corporate Priorities

Developing Champions and Supporters



- Demonstrate **value** of good asset management practices;
- Achieve tremendous **buy-in** and **support**;
- Develop **champions** and **supporters** for good asset management practices.

Leadership

Strong executive and senior management support

Stakeholders

Know / understand your stakeholders

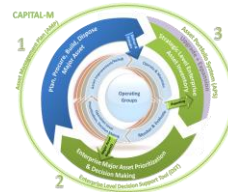
Collaboration / Partnership

Communication

Active Communication

Active Check-in

Questions / Comments



Contact:

Vikki Kwan, Senior Manager, Asset & Program Management, TransLink

Vikki.kwan@translink.ca