



# Asset Management 101:

## Regional Asset Management

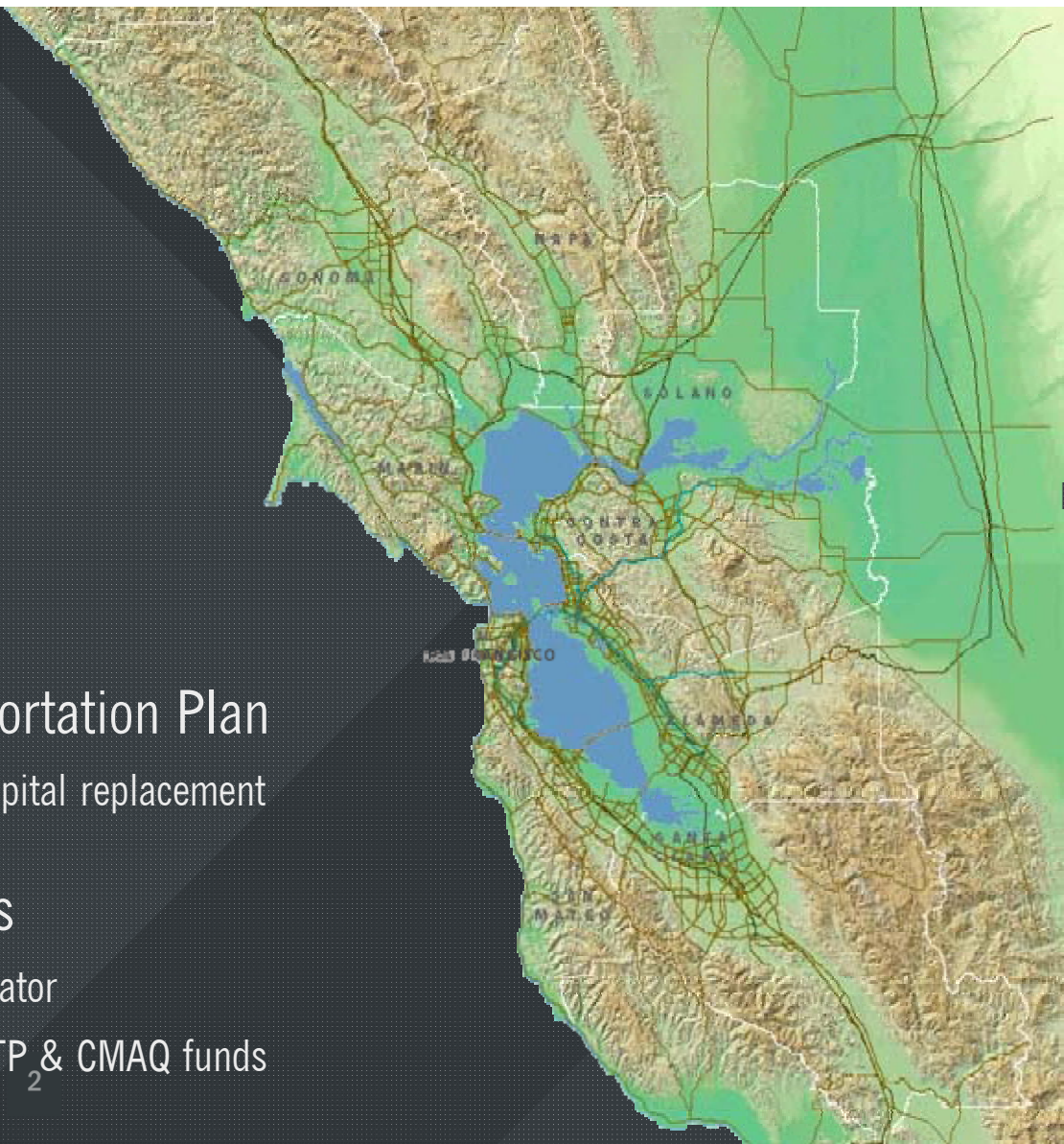
July, 2018

TRB – San Diego



# San Francisco Bay Area: Transportation Assets

- Metropolitan Planning Organization (MPO) for San Francisco Bay Area
  - 9 counties,
  - 101 cities & towns
  - 12 UZAs
  - 27 independent transit operators
- Develops long-range Regional Transportation Plan
  - Projects needs & funding for existing system capital replacement & rehabilitation
- Designated Recipient — Federal Funds
  - MTC programs formula funds to 23 transit operator
  - Has discretion over programming of regional STP<sub>2</sub> & CMAQ funds





# Why Asset Management.

- 1/3 of transportation revenues spent on SGR
  - SGR investments are still underfunded by 30%
- Enables the best performance for the least cost
  - Return on investment varies by agency
- Qualitative Benefits are Numerous
  - More efficient decision-making,
  - Increased service to the public,
  - Improved accountability and public trust,
  - Reduced failure risks for critical assets,
  - Longer life expectancy of assets,
  - Increased economic development
  - Reduced congestion, lower noise levels, and fewer emissions from more efficient travel,
  - Improved data quality







## Streets and Roads



# StreetSaver®

## Products

- StreetSaver® - Pavement Management Software
- StreetSaver Plus® - Non-Pavement (Asset Management) Software
- Technical Service Plans (TSPs)
- MobileRater™
- On-Line Academy

## Development Efforts

- Asset Management Modules
  - Storm Drains, Sidewalks, Curb & Gutter/ADA, Signals, Street Lights, Pavement Markings
- Deterioration Curves
- Sustainable Treatments
- Cross-Asset Resource Allocation Prioritization

5



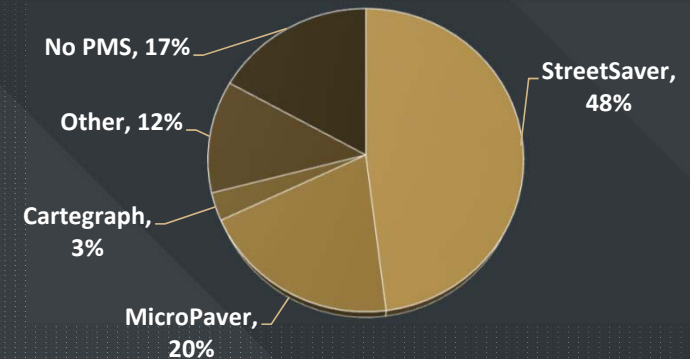
## StreetSaver® Users

- 486 Active Users
- Predominately West Coast
- California Market Share ~ 50%
- Other Users of Note:
  - Municipalities: Houston, TX, Birmingham, AL, Fresno County, San Diego County
  - RTPAs: TA for Monterey County, STA, NVTa, RTC Reno Nevada, Humboldt COG, Siskiyou RTC, Wenatchee Valley TC, Washington
  - Other Agencies: Stanford University, US Forest Service, Home Owners Associations, **BART**

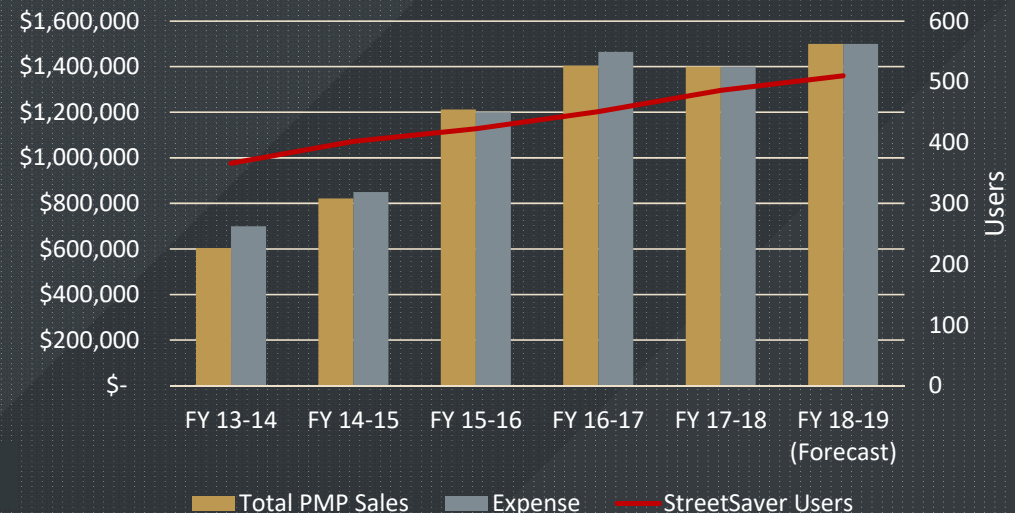
## Revenue/Budget

- Revenue/Expense Reach Break-Even in FY 2017-18 (Does not include staff costs)
- Revenue *and* Budget Increases Largely Resulting from TSP sales
- Future Target Markets = MPOs, RTPAs, & CMAs for County and Region-Wide Planning

CA PMS Market Share



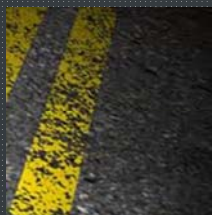
StreetsSaver Annual Revenue & Expense





# Regional LSR Program Benefits

## Local Benefits



### Asset Management

- **PTAP** / Certification
- Needs / Condition Assessments
- Best Practices
- Training



### Revenue / Advocacy

- Sales Tax Analyses
- Statewide Representation



### Support

- Council Presentations
- Awards
- LSR Working Group

## Regional Benefits



### Revenue/ Advocacy

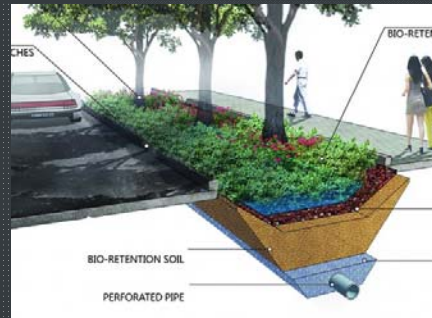
- Statewide Needs Assessment
- Revenue Measure Analysis



### Planning

- Needs/Condition Assessments
- Benefit/Cost Assessments
- Freight Route Condition/Needs
- Regional Policy Impacts
- HPMS/MIRE Reporting
- Asset Data Integration
- Bay Trail Asset Management

# Regional LSR Asset Management Initiatives



## HPMS

- Traffic Counts
- Inventory
- Geometric Data
- Pavement Condition
- Bridge Condition
- NHS

## Sustainable/Green Streets

- Storm water runoff management
- Storm drain inventory and mapping
- Roadway implementation prioritization

## Strategic Procurements

- Common Specs
- Bulk Purchases
- Joint Procurements
- Sustainable Treatments

## Safety

- Safety-related asset inventory — grade, barriers, crosswalks, curb-ramps, signals, signage, sidewalks, etc.
- Safety & asset data integration - Crash, roadway inventory, & traffic volume
- FHWA Pilot
- Possible funding: HSIP, SB1, Federal Grants



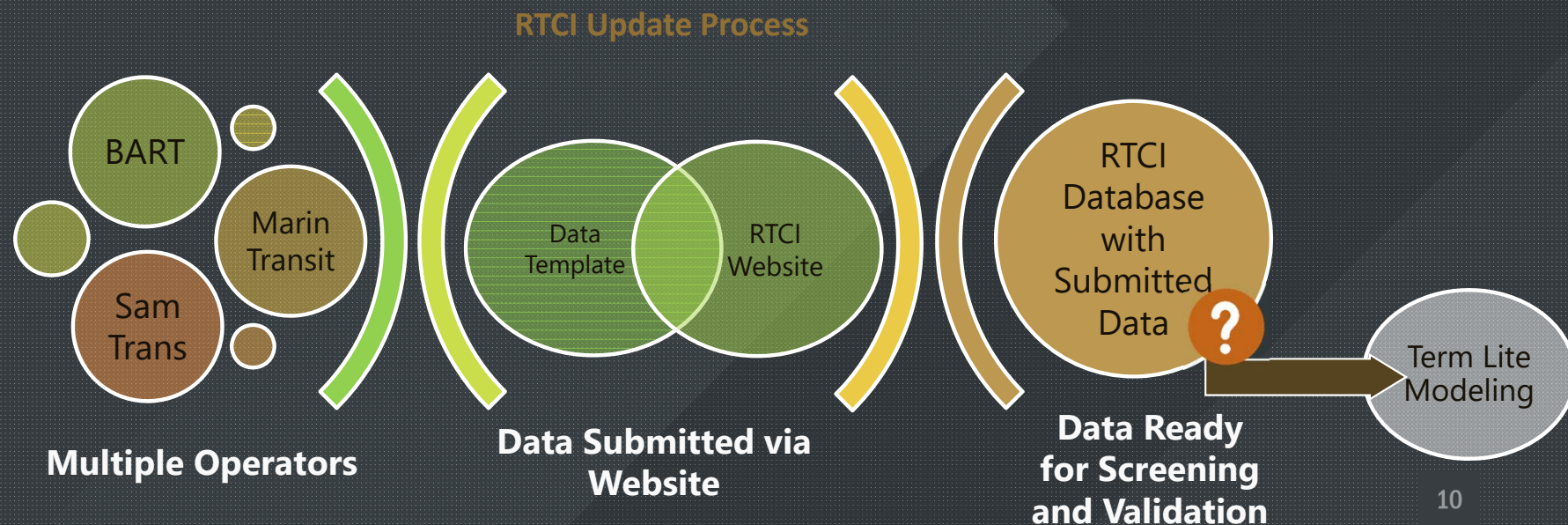


**Transit**



# Regional Transit Capital Inventory (RTCI)

- Database of existing Transit Capital Assets and their attributes
- Contains asset type, quantity, year in service, and cost
  - *Vehicles, Guideways, Facilities, Stations, Systems*
- Covers 25 different agencies in 9-county Bay Area Region
- Allows for the accurate modeling of funding needs and state of repair for planning purposes





# RTCI Milestones

## RTCI – Phase 2

- Excel Version
- Single Table

**2011**

**2007**

## RTCI – Phase 1

- Excel based
- Many worksheets

## RTCI website

- Web app developed to allow operators access to RTCI data
- Compatibility with TERM Lite

**2015**

**2014**

## RTCI - Phase 3

- Transition to a SQL based database

**2018**

## RTCI Website 2.0 – “NEW”

- One-button download of specified tables/data views
- Update process contained within the web browser
- Integration of RTCI data with NTD reporting
- Dashboard and tools for dynamic data and SOGR visualization



# Federal Requirements for Transit Operators – MAP-21 Transit Asset Management Rule

- Establish TAM performance targets -- **Complete**
- Coordinate these performance targets with the State and MPOs -- **Complete**
- Develop a TAM Plan — In progress; Due October, 2018
- Report asset inventories, condition, and performance measures through the NTD — Due October, 2018



## FEDERAL REGISTER

Vol. 81  
No. 143

Tuesday,  
July 26, 2016

### Part II

#### Department of Transportation

Federal Transit Administration

49 CFR Parts 625 and 630

National Transit Database; Transit Asset Management; Final Rule; Notices;

National Transit Database; Capital Asset Reporting; Transit Asset  
Management; Proposed Guidebooks



# MTC's Role in TAM Rule Compliance & Beyond

- Target Setting
- RTCI Website – 2.0
- Group TAM Plan for Tier II Operators
  - *Preparation of a Group TAM Plan (By May, 2018)*
  - *Consolidated National Transit Database (NTD) report*
  - *Preparing guidelines for future updates*
- Technical Assistance for Tier I Operators
- Regional TAM Strategic Planning



# Transit Asset Management Group Plan

- 16 Tier 2 Transit Operators
- Associated Tasks Include:
  - Assessment of Management Environment
  - Refinement of Asset Inventories
  - Development of Uniform Asset Assessment Procedures
  - Development of Investment Prioritization Approach
  - Consolidated NTD Reporting
- Technical Assistance for Tier I Operators
- Regional TAM Strategic Planning



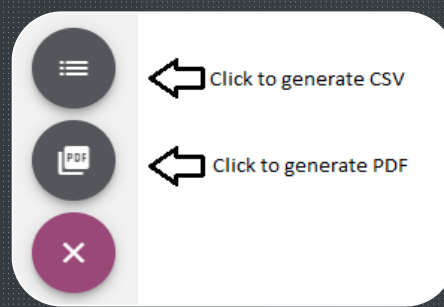


# Regional Transit Asset Management Initiatives



## Facility Data Improvement

- Improved RTCI parent-child facilities data
- Uniform inspection and condition assessment
- Better target-setting



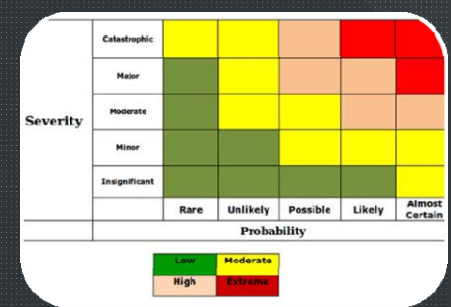
## RTCI/NTD Integration

- Ease of reporting for transit operators
- Consistent asset data across reporting functions
- Improved access to NTD data by MTC



## GeoCoding

- Improved fixed guideway asset data
- Identification of critical rail assets / routes
- Improved target-setting for fixed guideway



## Transit Network Risk Analysis

- Risk-based condition assessments
- Identification of region-critical assets
- Better informed funding policies

Questions?

