

Transport Equity impacts of DRT in Peri-Urban Australia

Benjamin Kaufman

PhD. Researcher

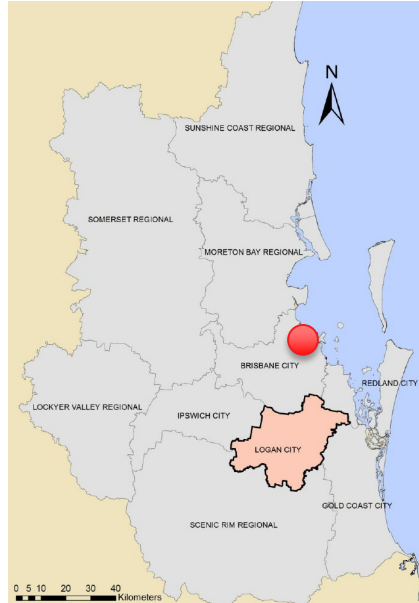
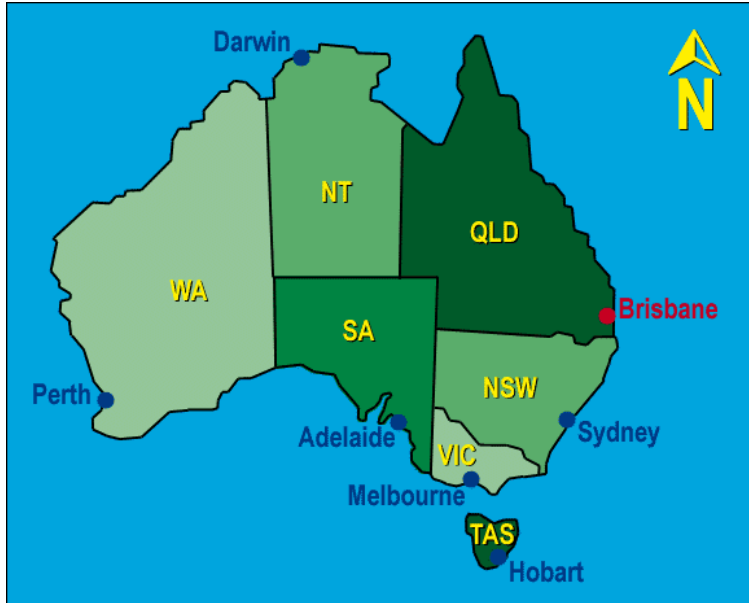
Griffith University Cities Research Institute

TAP Scholar

Transport-Academic Partnership



Location



Berrimba Wetlands
11 mins / 8 kms

Brisbane CBD
37 mins / 35 kms

Logan Motorway
14 mins / 13 kms

Marsden State High School
7 mins / 4.6 kms

Marsden Shopping Centre
3 mins / 5.5 kms

MI to Gold Coast and Brisbane
22 mins / 22 kms

Loganlea Train Station
13 mins / 8.5 kms

Griffith University Logan Campus
15 mins / 11 kms

Crestmead State School
9 mins / 6.5 kms

Chambers Flat Road

Springwood
21 mins / 14 kms

IKEA
20 mins / 13 kms

Bayes Park
8 mins / 5.7 kms

TAFE
15 mins / 11 kms

Marsden State School
6 mins / 4.6 kms

Logan City Council
6 mins / 4 kms

Logan City Golf Course
15 mins / 11 kms

Crestmead Park
8 mins / 5.2 kms

Logan Hospital
14 mins / 10.4 kms

Logan Reserve Rd
4 mins / 3.6 kms

St Fintona College
5 mins / 4.1 kms

Proposed Waterford West Water Park
6 mins / 4 kms

Proposed IGA Shopping Centre
4 mins / 2.9 kms

Logan Reserve State School
3 mins / 2.9 kms

KILLARA
Logan City

Proposed Woolworths
450 Chambers Flat Road
1 min / 1 km

Killara Builders' Display Village
20 builders / 29 homes

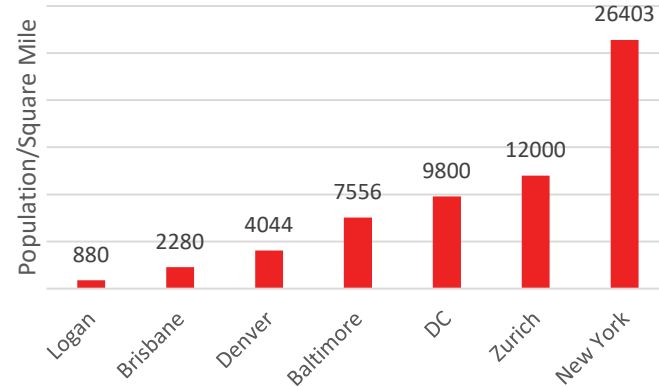
A bright future is right in front of you

The City of Logan's focus on economic growth and job opportunities for residents, coupled with its ideal location - central to both Brisbane and the Gold Coast - is paving the way for a prosperous future.

The population is currently in excess of 319,000 and is predicted to grow by up to 200,000 over the next 20 years, making it one of Queensland's key growth regions.

Jobs growth has been steady in recent years and now Logan is home to over 20,000 businesses producing a gross regional product of over \$13 billion. Over the next 2 decades Logan City's objective is to create over 50,000 new jobs for its residents.

Source: www.logan.qld.gov.au/about-us/about-logan-logan-statistics-and-facts; www.economicdevelopment.qld.gov.au/logan
This plan is an art impression and is for illustrative purposes only. The design, layout, measurements and proportions shown may vary without notice.





CONNECTING OUR COMMUNITY: BETTER TRANSPORT FOR LOGAN

We've had some fantastic wins in our Connecting our Community campaign:

- Extra buses are on the roads servicing Yarrabilba.
- Our new Mayor committed \$1 Million/year towards funding better public transport.
- Council and State Government agreed to work together on an Integrated Transport Plan that will address Logan's long-term transport problems.
- The Qld Government announced an Australia first trial of a "Demand Responsive Transport Scheme" to start early next year. This is where you can order a ride for the cost of a translink fare.
- Principles agreed by State, Council and Community that will guide the plan and future public transport decisions.



Demand Responsive Transport trials

[What is DRT?](#)



[Register & book a trip](#)



[DRT trial sites and destinations](#)



[Travel information](#)



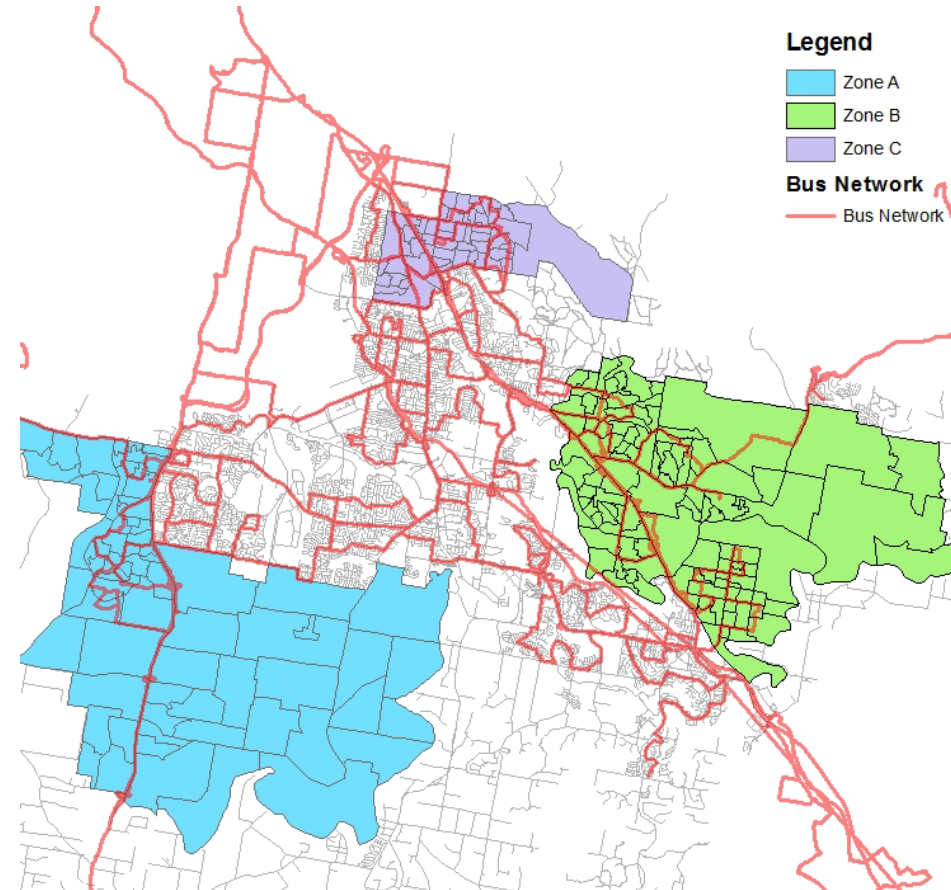
[Operating hours and fares](#)



[Feedback and consultation](#)



Logan City DRT Trial



- 6am – 10pm
- \$3/ \$1.50 flat fares



Customer Feedback

“Nothing, it is the best thing since sliced bread. Seriously though the service is fantastic, I tell everyone how good it is.”

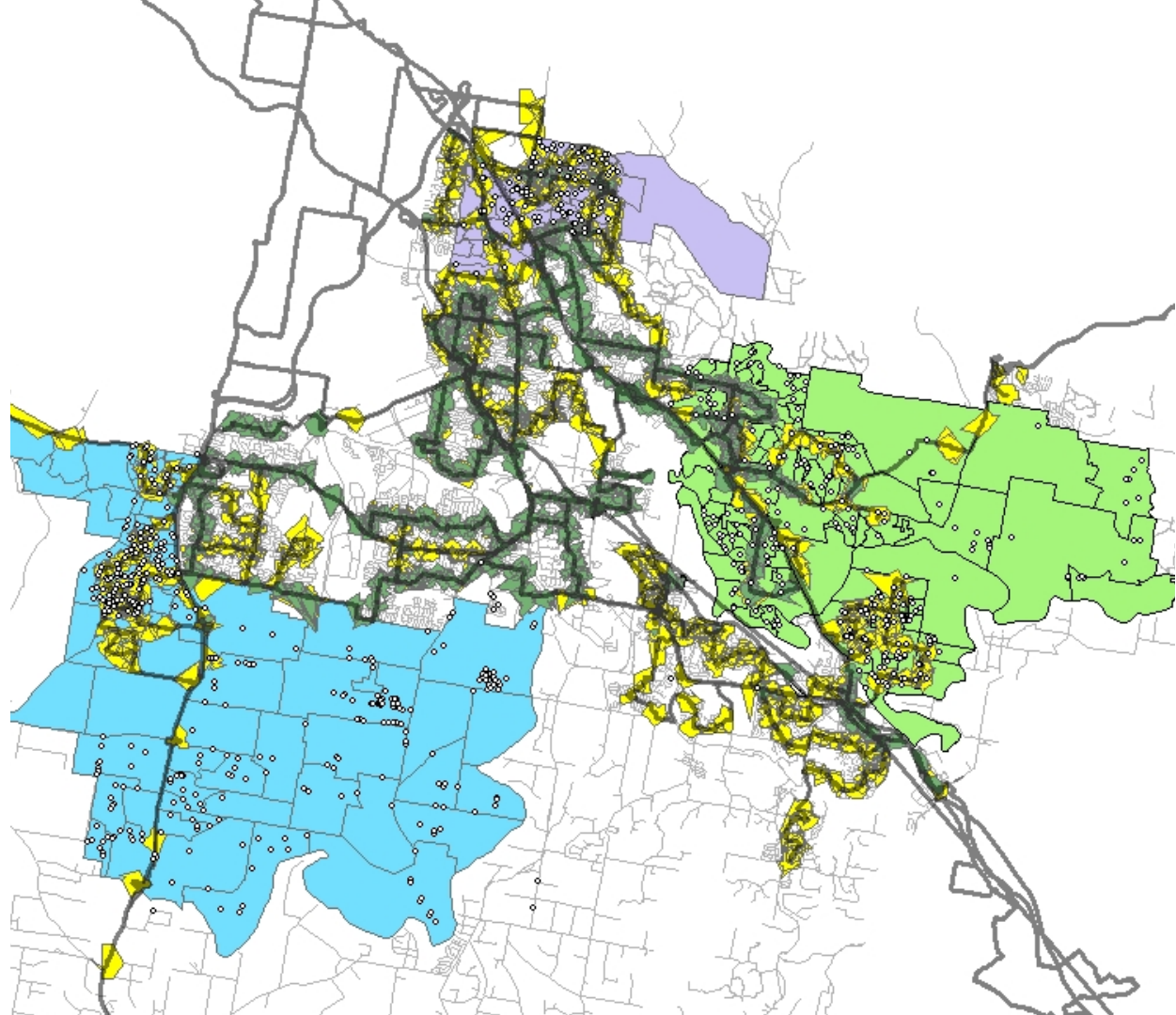
83%

“DRT has enabled me to do more without having to own a car, keep it up!”

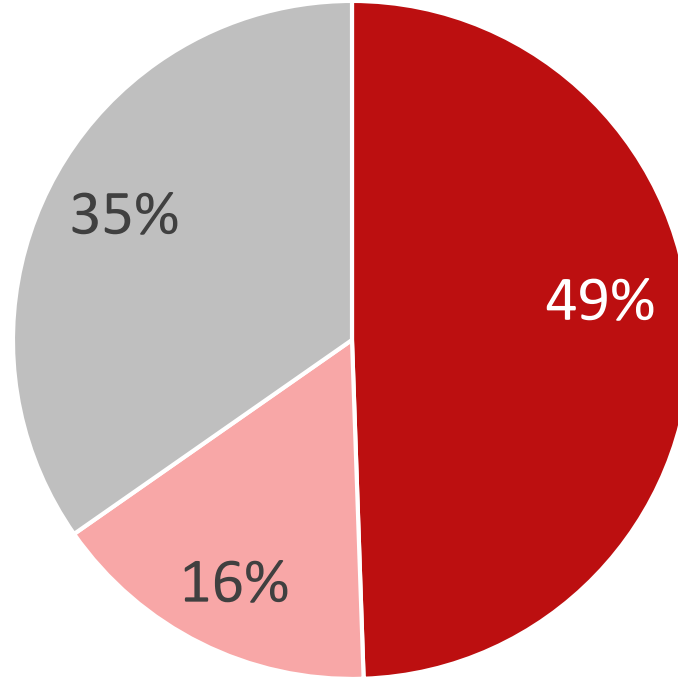
“DRT is too restrictive in its hours and not flexible to use for work transport.”

17%

DRT Usage

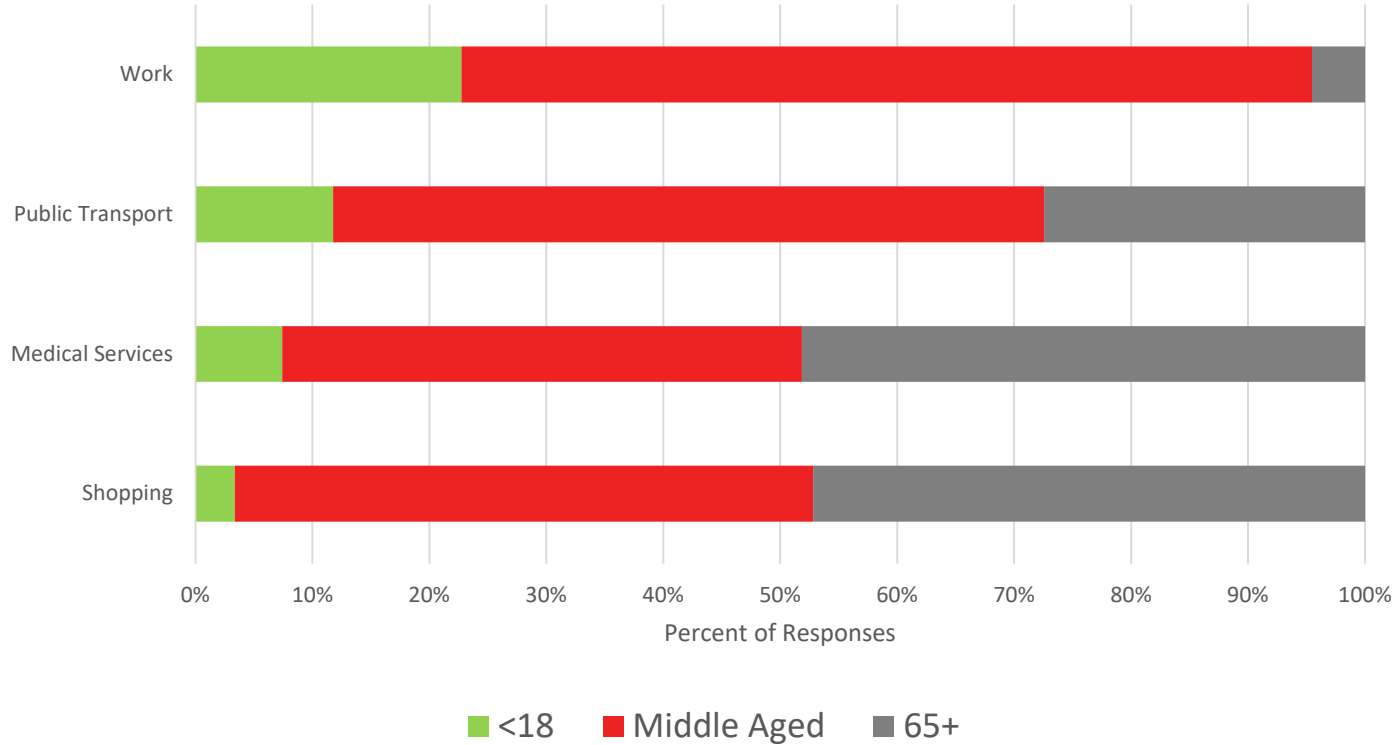


Respondent's Automobility

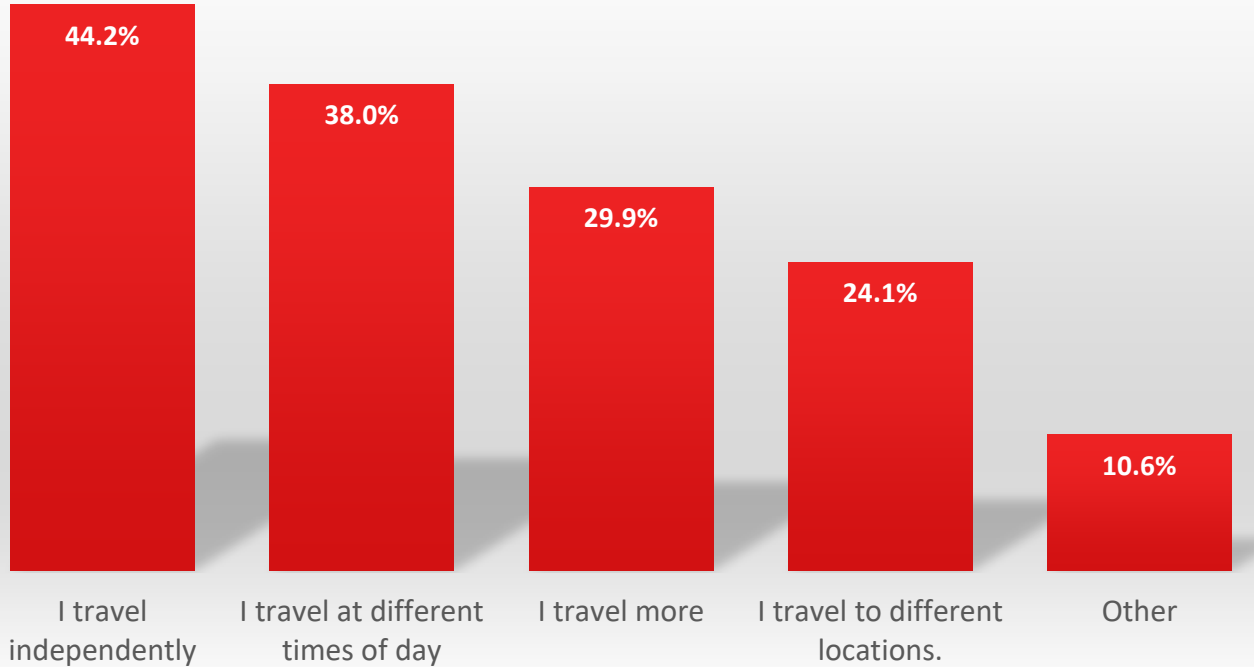


■ Licensed with car ■ Licensed ■ No License

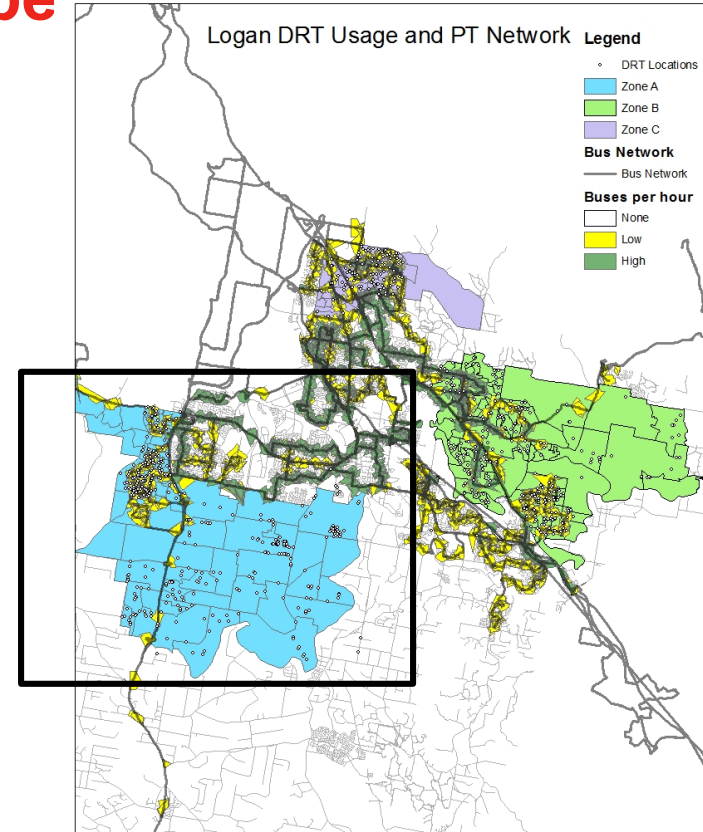
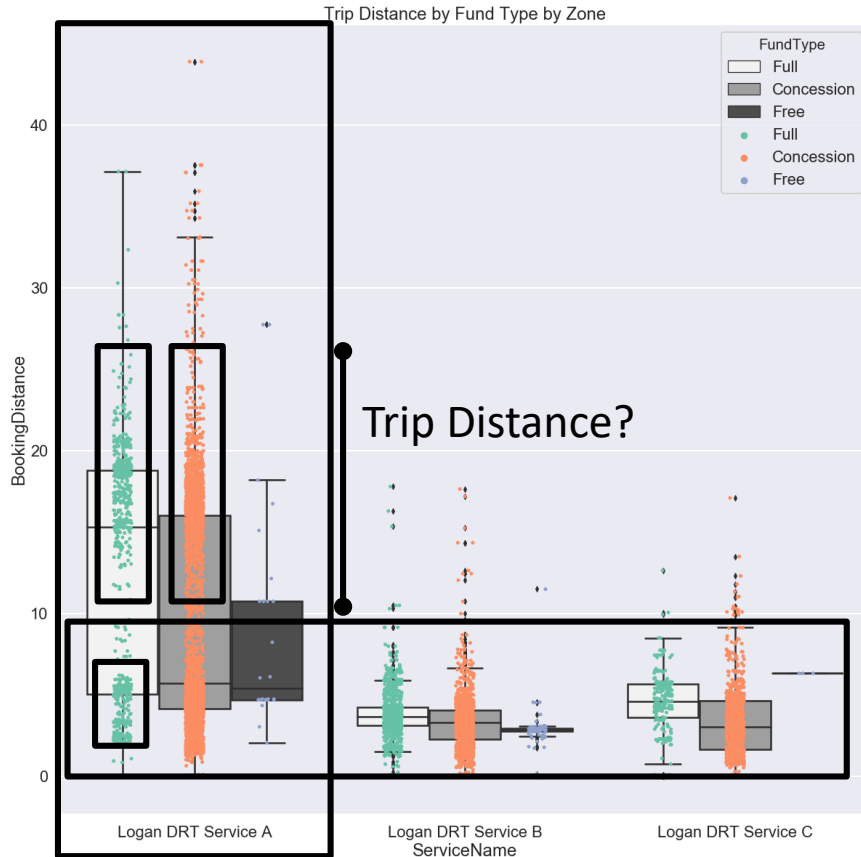
DRT Trip Purpose by Age



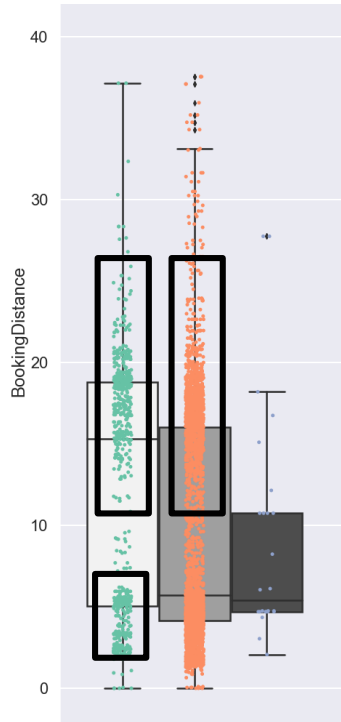
Travel Behavior Change Due to DRT



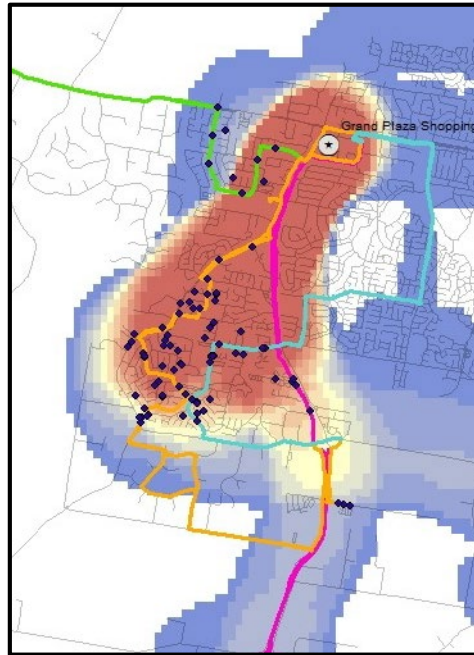
Network Design and Landscape



Network Design and Landscape



Logan DRT Service A



DRT in New South Wales

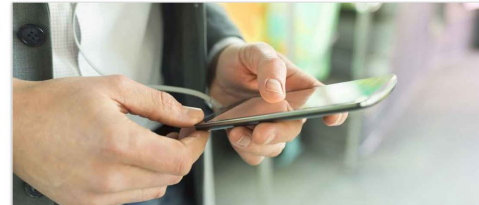


New South Wales DRT



Greater Sydney services

- Inner West >
- Carlingford and North Rocks (Trial service) >
- Central Coast (Trial service) >
- Eastern Suburbs (Trial service) >
- Edmondson Park (Trial service) >
- Illawarra (Trial service) >
- Macquarie Park (Trial service) >
- Manly (Trial service) >
- Northern Beaches (Trial service) >
- Sutherland Shire (Trial service) >
- Wetherill Park (Trial service) >



NSW Regional services

- Albury, Burrumbuttock, Walla Walla and Jindera (Trial service) >
- Central West (Trial service) >
- Mid North Coast (Trial service) >
- Moore Creek to Tamworth (Trial service) >
- Moree (Trial service) >
- Newcastle eBikes >
- Northern Rivers (Trial service) >
- Lake Macquarie (Trial service) >
- Orana (Trial service) >
- Sapphire Coast (Trial service) >
- South Coast and Canberra (Trial service) >





Keolis Downer


Bookings

Bookings can be made from 1 month up to 30 minutes prior to your trip. Bookings are subject to availability.

You can book this service via the Keoride app:

App Store 

Google Play 

Another way to book 

Fares

A one-way trip will cost:

- \$2.60 for less than 3km
- \$4.30 for 3-8km
- \$5.60 for more than 8km

There are no concession fares for this service.

Free travel entitlements 

Hours of operation

Monday to Friday

- 6am–10am
- 3pm–7pm

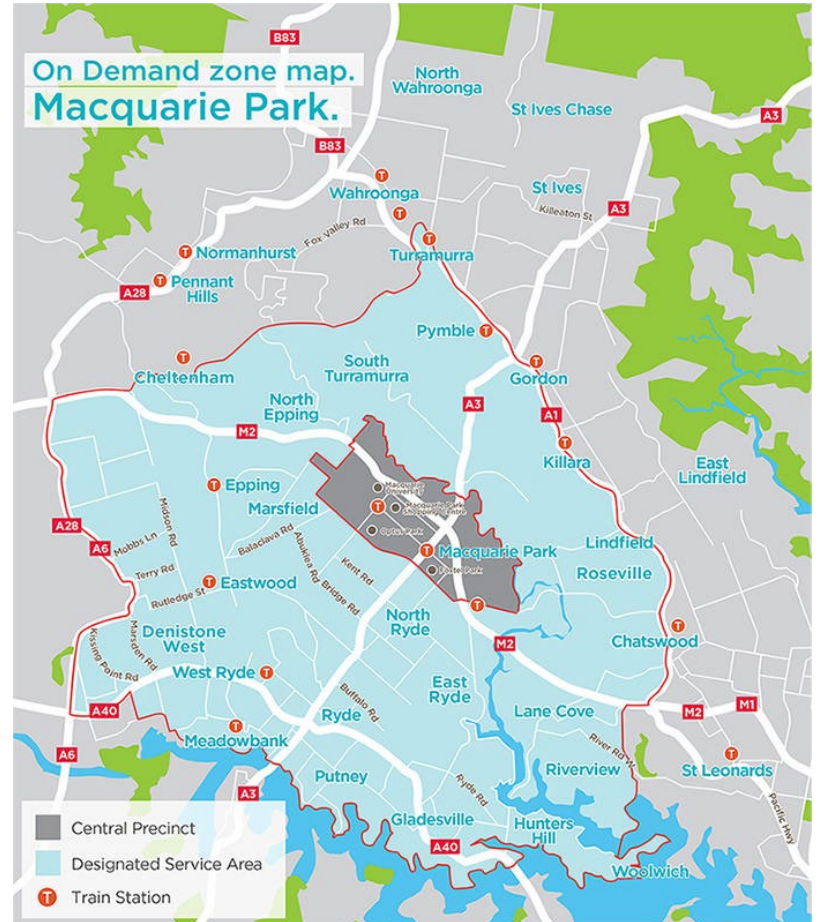
Saturday and Sunday

No service

Public holidays

No service

On Demand zone map.
Macquarie Park.







Bookings

Bookings can be made from 48 hours to 10 minutes prior to your trip. Bookings are subject to availability.

You can book this service via the BRIDJ app:

[App Store](#) 

[Google Play](#) 

Another way to book 

Fares

BRIDJ is a flat fare:

Adult \$3.10

Concession \$1.50

These fares will not be eligible for transfer rebates.

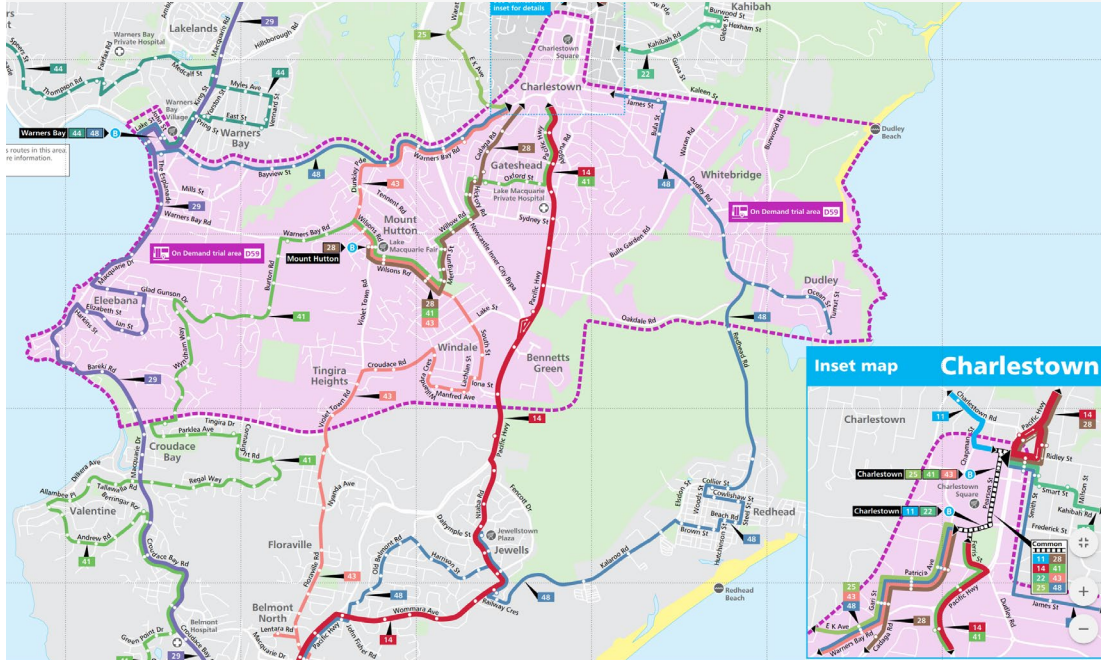
You can pay for your trip with OpalPay or by credit card, all within the BRIDJ app.

Hours of operation

Monday to Friday 6am–9am
3pm–9pm

Saturday and Sunday No service

Lake Macquarie (Trial service)



Fares

Introductory fare: \$3 per one-way trip

The introductory fare will be available for the duration of the trial.

Concession fares will apply.

You can pre-pay by credit card when you book or pay cash to the driver.

Hours of operation

Monday to Friday	9am-4pm
Saturday	7am-6pm
Sunday	9am-6pm

Transport Equity impacts of DRT in Peri-Urban Australia

Benjamin Kaufman

PhD. Researcher

Griffith University Cities Research Institute

TAP Scholar