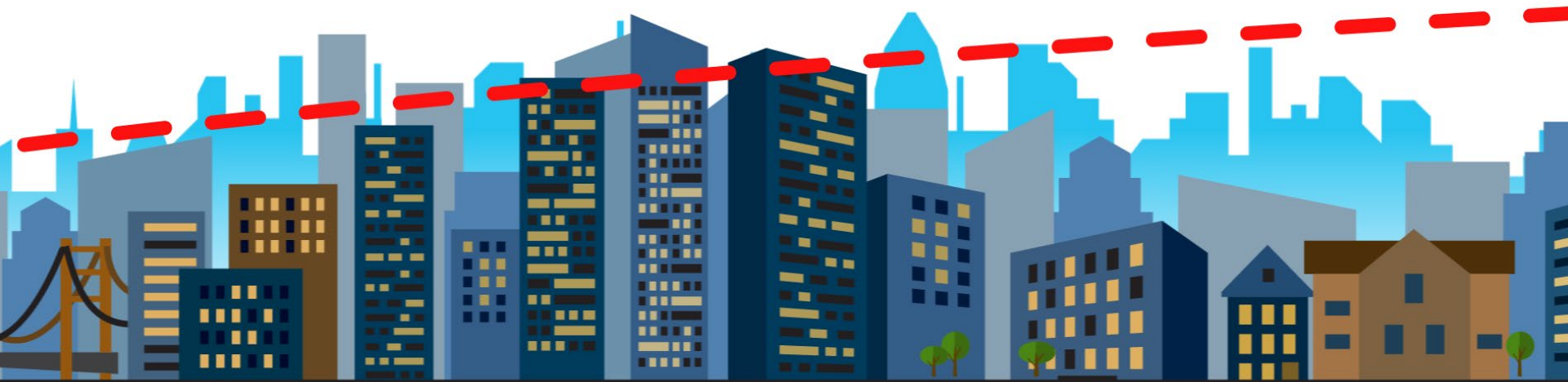


Universal Mobility

as a service



Jana Lynott, AICP

Senior Policy Advisor

AARP Public Policy Institute

Twitter: @JanaLynott

1/3 of Americans do not drive

- 1 in 5 people 65+
- Many w/disabilities
- Many low-income
- Children
- Others by choice





Result of our 2-Class Transportation System

- Advance reservation requirements
- Inadequate funding & programmatic rules => trip and trip purpose limits
- Unreliable pick-up/drop-off times
- Jurisdictional boundaries become arbitrary barriers
- Fragmentation
- Inefficiency due to rules & regulations

Universal Mobility

as a service

- ▶ A single, integrated network of traditional and non-traditional services that together serve **EVERYONE**
- ▶ Universal Design
- ▶ With or without AVs
- ▶ One stop shopping
 - ▶ Easy Discovery
 - ▶ Easy Booking
 - ▶ Easy Mode Transfers
 - ▶ Easy Payment

FlexDanmark



FlexTrafik Services

Flex Patient
Municipality
Handicap
Route
Tur

Plus Tur



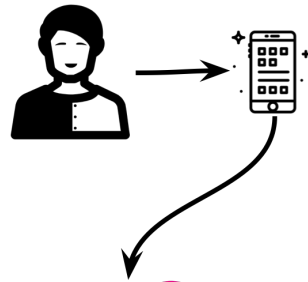
FlexDanmark

- “On-demand” transportation for all citizens
- 5.7 million annual trips
 - 15,000 trips/day on average
 - Peak day at +24,000 trips
 - 250,000+ returning customers every year
- 95% on-time performance defined as 15 min window
- Portal used by hospitals, medical offices, and human service agencies to connect clients to transportation
- High level of institutional coordination
 - 5 public transit authorities
 - 1 Nationwide system
 - 550+ providers (all private sector)
- Cost allocation built into the software
- Cost savings of 20-40%
- Automated interface and common data format

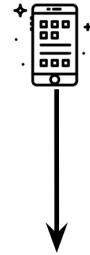
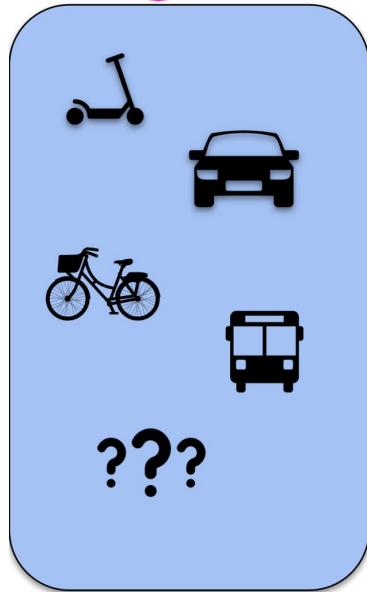
An aerial, long-exposure photograph of a complex highway interchange at night. The image shows multiple levels of elevated roads and ramps, illuminated by streetlights. The motion of vehicles has created long, glowing light trails in shades of purple, blue, and white, which curve and swirl across the frame, creating a sense of dynamic movement and complexity. The overall color palette is dominated by these cool, vibrant tones against the dark background of the night.

The Path Forward: Two Possible Futures

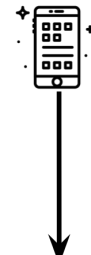
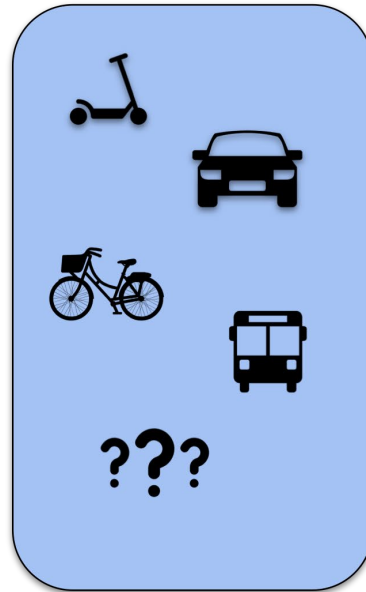
A Walled Garden
Mobility
Future



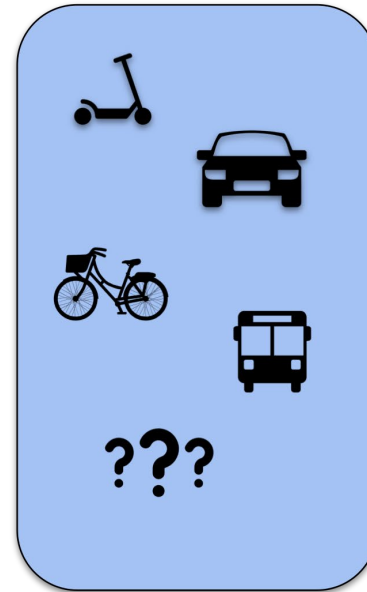
lyft



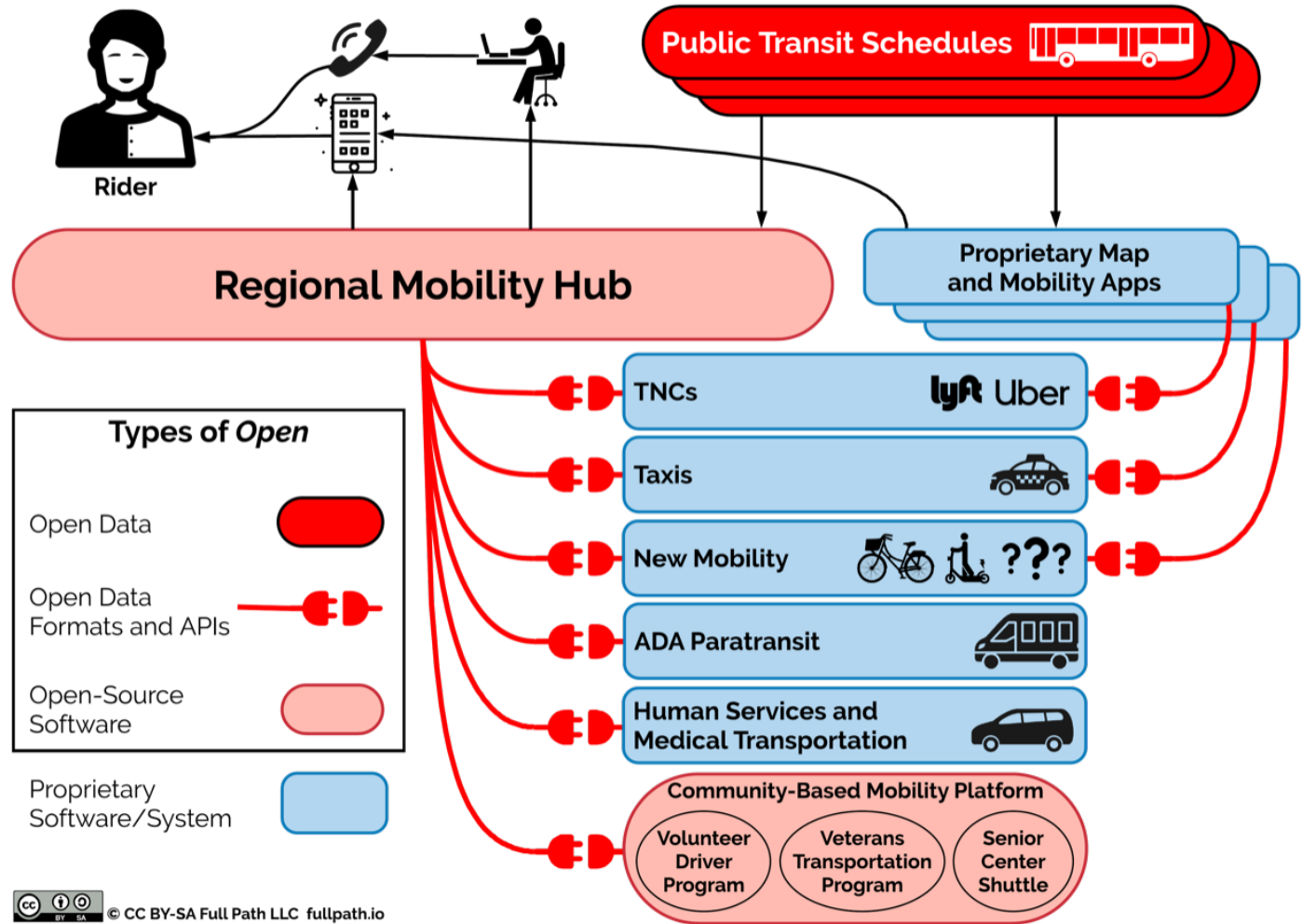
Uber



Ford



Example Open and Universal Mobility Platform Architecture



An Open Platform Future

TCRP G16

Development of a
Transactional Data
Specification for Demand-
Responsive Transportation

www.AARPInternational.org/FlexDanmark



Jana Lynott, AICP
Senior Policy Advisor
AARP Public Policy Institute
Twitter: @JanaLynott
jlynott@aarp.org