

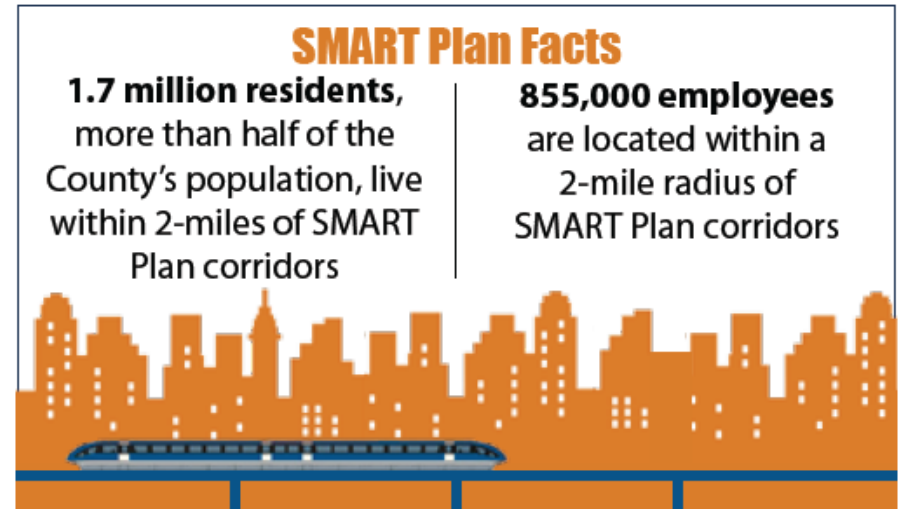


# Strategic Miami Area Rapid Transit SMART Demonstration Program

Lisa Colmenares, AICP, Program Development Manager  
Miami-Dade Transportation Planning Organization

# Strategic Miami Area Rapid Transit Demonstration Program

- Brief Background
- Current Status
- Next Steps



# SMART Plan SMART Region

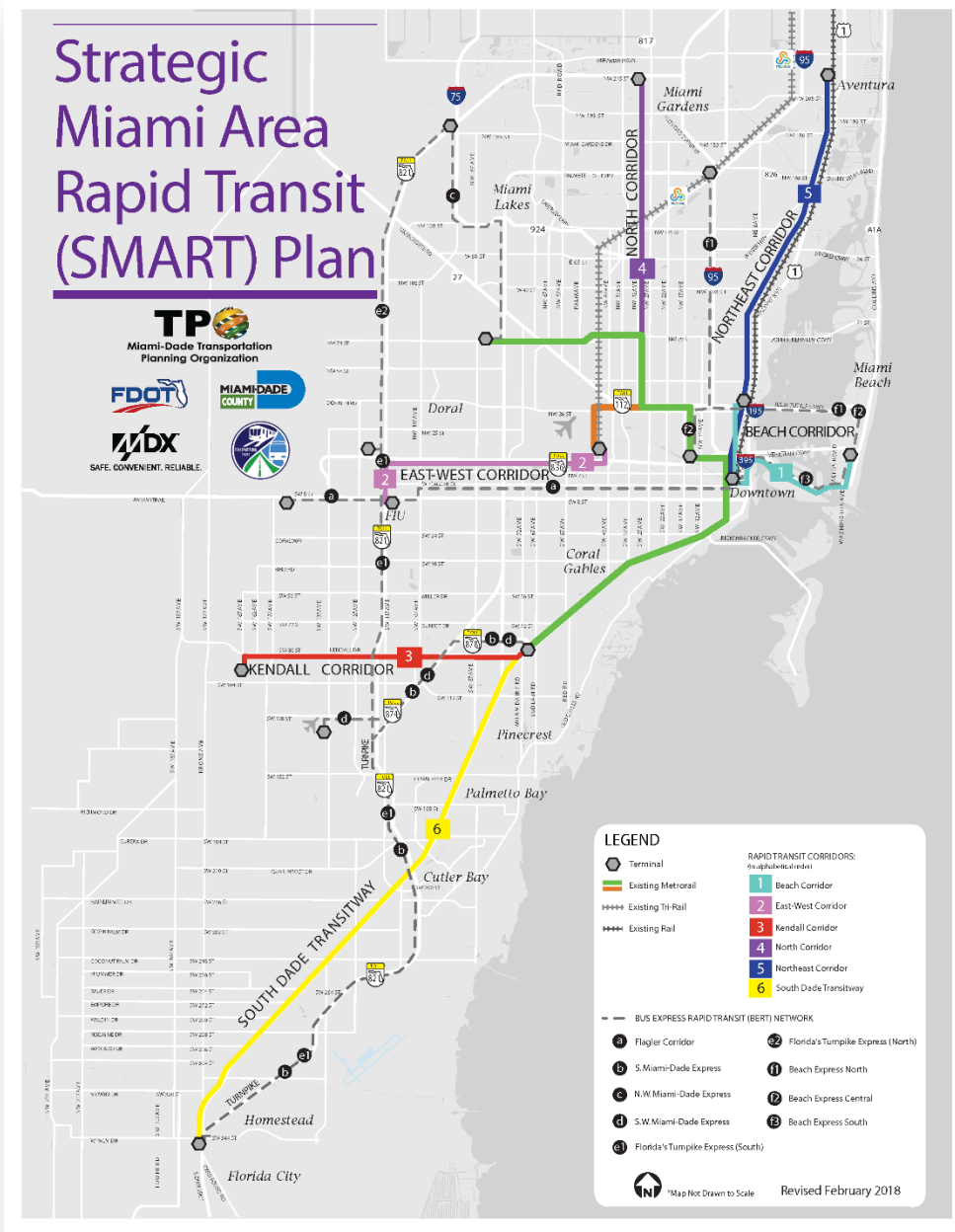
- **Six (6) Rapid Transit Corridors**

- ✓ Beach
  - ✓ East-West
  - ✓ Kendall
  - ✓ North
  - ✓ Northeast
  - ✓ South
- } (1) Project Development & Environment Phase
- } (2) Implementation Plan for each corridor

- **Six (6) Bus Express Rapid Transit Corridors**

- ✓ Beach Express
  - ✓ Flagler Street
  - ✓ Florida Turnpike
  - ✓ NW Miami-Dade Express
  - ✓ S Miami-Dade Express
  - ✓ SW Miami-Dade Express
- } Over 90 miles of express bus network

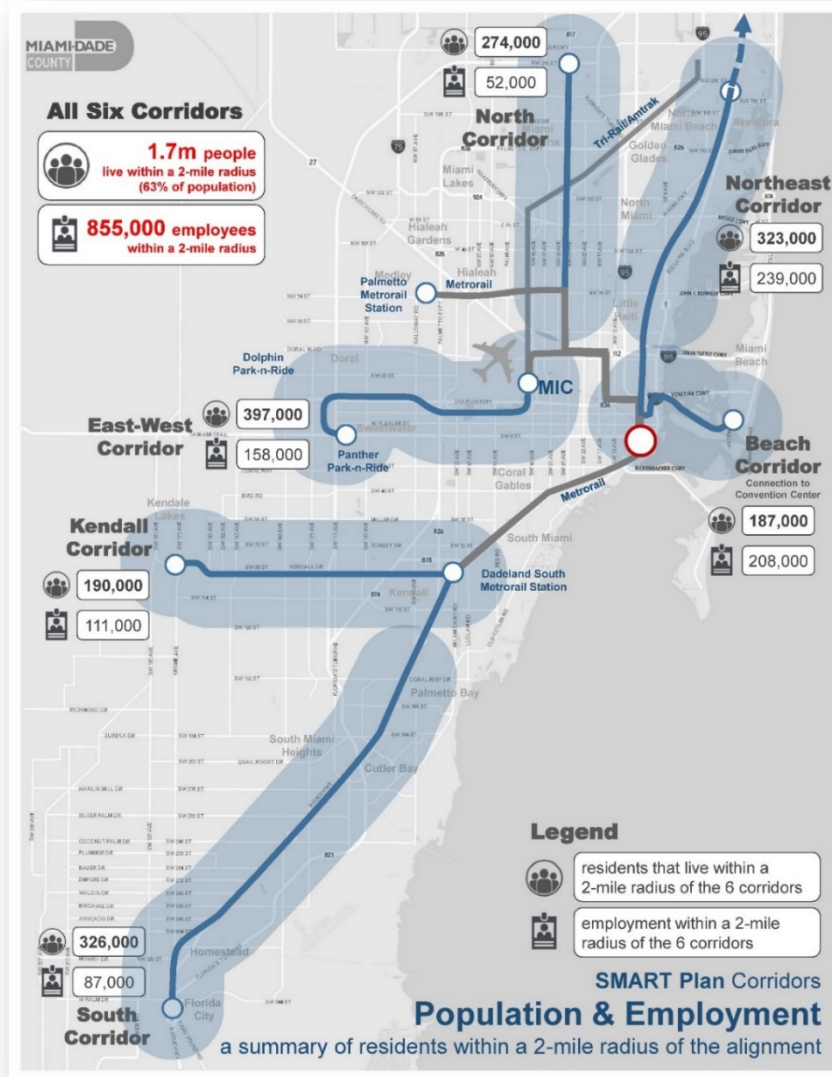
- **Supported by the TPO Governing Board, Miami-Dade County, Municipalities, State and multiple entities**



# Population & Employment

## Why is the SMART Plan so critical?

The SMART Plan includes rapid transit corridors and express bus routes to increase connectivity for approximately 77% of Miami-Dade County residents that travel outside their residential district for employment in other areas of the County.



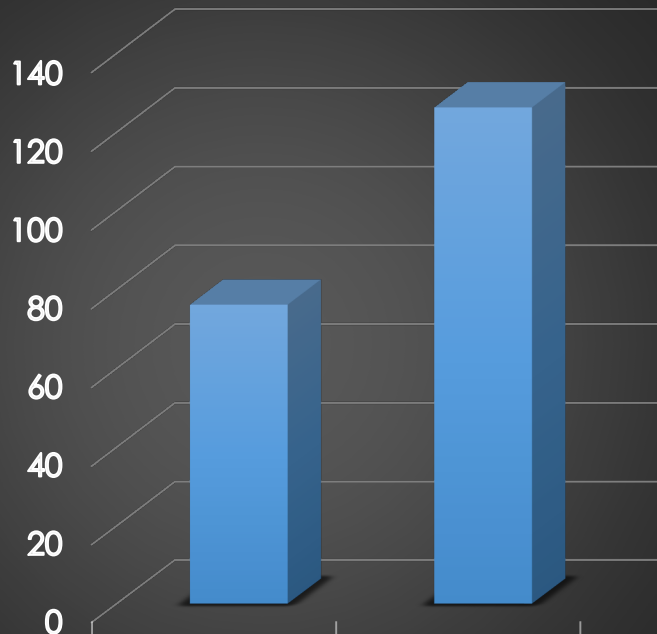
Within 2-mile radius of SMART Plan corridors:

- 1.7 million of the County's population live
- 855,000 employees work
- Transit Oriented Development planned



# SMART Plan Progress

## New Route Miles



Route Miles

Rapid  
Transit  
Corridor

76.2

BERT

126.3

## Rapid Transit Corridors:

- ✓ Construction for South Dade Transitway - **2020**
- ✓ LPA for South Dade Transitway - **2018**
- ✓ LPA for North Corridor - **2018**
- ✓ LPA for East-West Corridor - Summer **2019**
- ✓ LPA for Beach Corridor - Summer **2019**
- ✓ LPA for Kendall Corridor - Summer **2019**
- ✓ NE Corridor Negotiations with SFRTA, FECI, MDC

## Bus Express Rapid Transit (BERT):

- ✓ LPA for Flagler BERT – Summer **2019**
- ✓ NW Miami-Dade Express & Station – Winter **2019**
- ✓ South Miami Dade Express – Summer **2019**
- ✓ Turnpike South Express - **2020**
- ✓ South Beach Express South - **2020**
- ✓ SW Miami-Dade Express - **2021**
- ✓ Miami Beach North Express – **2022**
- ✓ Miami Beach Express Central - **2022**
- ✓ Turnpike North Express – **2023**



# First & Last Mile

## DYNAMIC ON-DEMAND TRANSIT

**What:** Miami-Dade will deploy real-time on-demand technology, using small transit vehicles, for a **dynamically routed, on-demand transit** to provide **shared, near door-to-door rides** for commuters and ambulatory paratransit riders connecting with Metrorail stations.

**Who:** procuring technology and on-demand services.

**When:** fall 2018



## MOBILITY INNOVATION + TECHNOLOGY

### Metrorail Service Areas:

- Civic Center
- Dadeland Area

### Transitway Areas:

- Cutler Bay
- Palmetto Bay

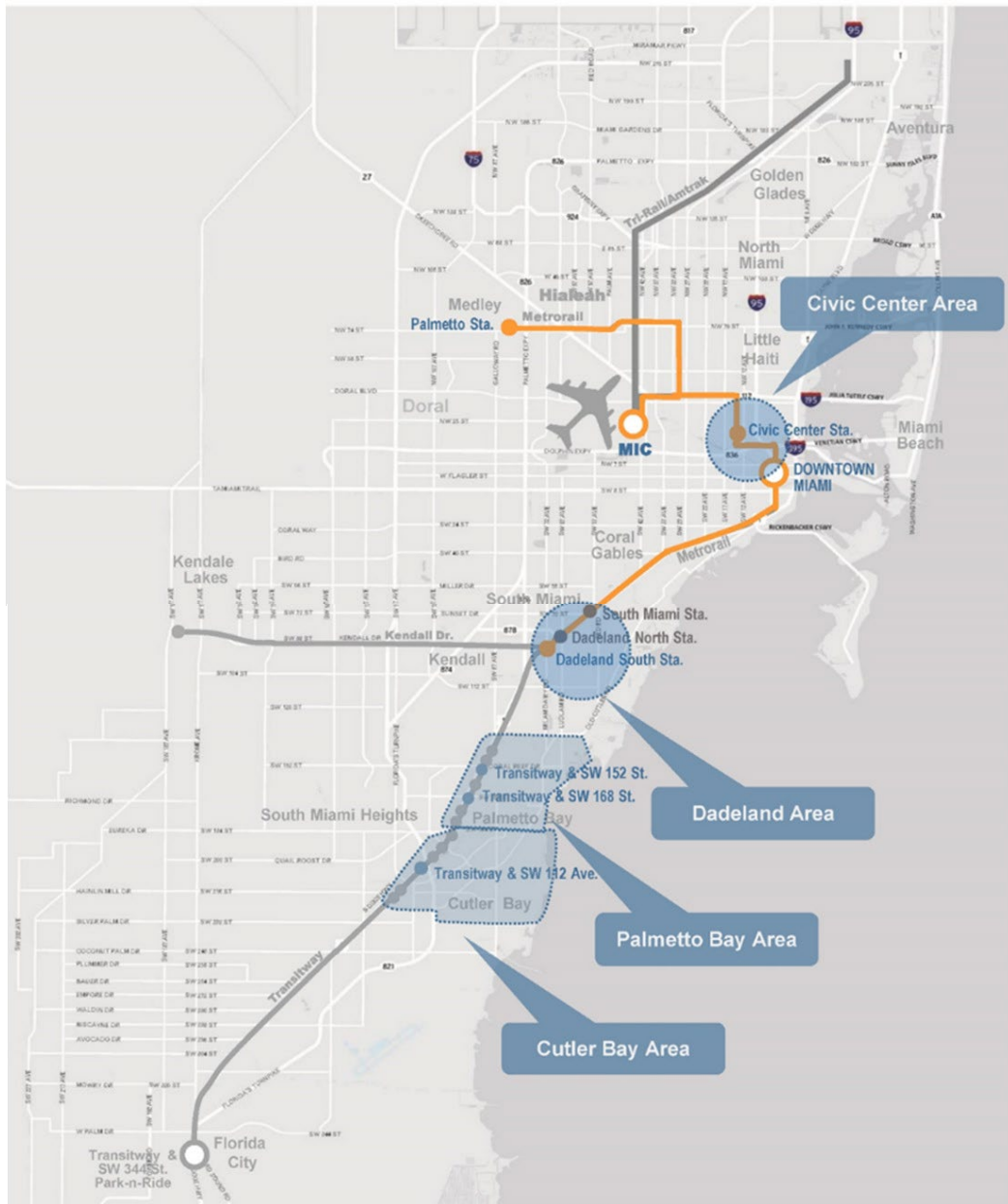
**DYNAMIC ON-DEMAND TRANSIT**  
FIRST/LAST MILE DEMONSTRATION SOLUTIONS



Miami-Dade Transportation  
Planning Organization

# SERVICE AREA MAP

## FIRST/LAST MILE SOLUTIONS



### Partnership driven:

- Private licensing on-demand technology
- Private transit operator

### Shared, near door-to-door rides

- To and from transit facilities from/to Metrorail/Transitway Stations
- Pick-up times no more than 10-15 mins.

### Real-time ride matching and dynamically routed rides

### Provide customers who request wheelchair access an equivalent service

**Trip booking through smartphone app** integrated with MDT Tracker app available Spanish & Creole, special functionality for blind & low vision, option for bike storage (if feasible)



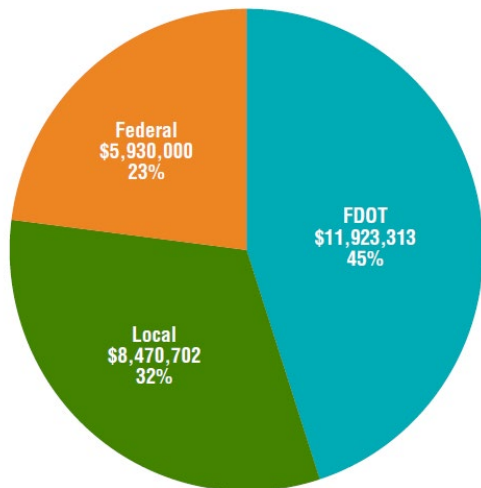
# SMART Demonstration Projects

## Current Status



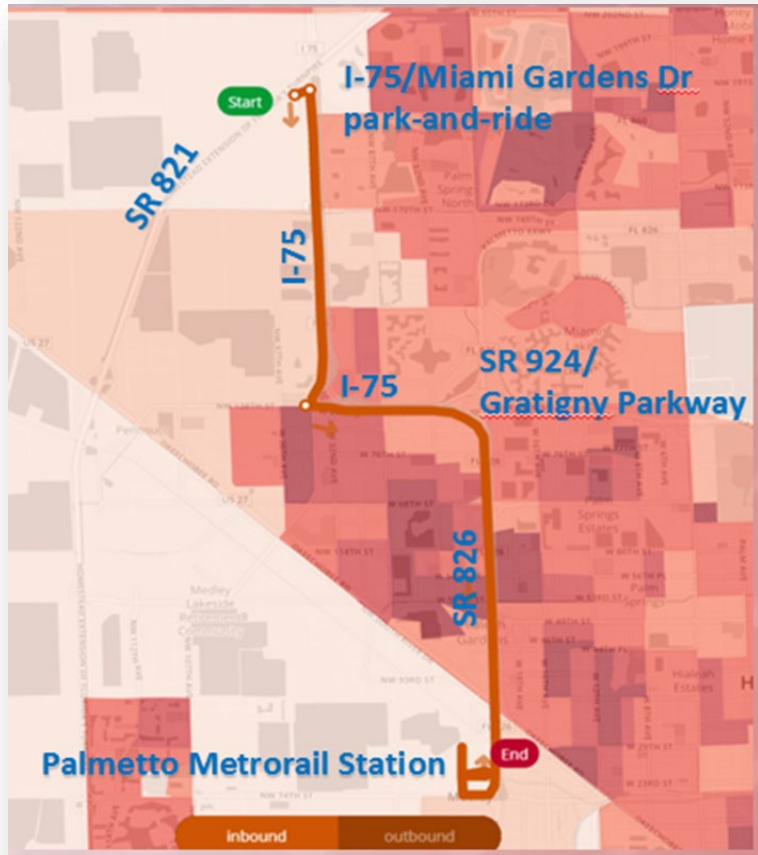
### Demonstration Projects:

- ✓ City of Miami Flagami Trolley Service- **2018**
- ✓ Coral Gables Flex Service via Electric Vehicles - **2019**
- ✓ Doral FIU Trolley Service - **2018**
- ✓ Funding for NE Corridor Demonstration Station - **2018**
- ✓ North Bay Village SMART Feeder Route - **2019**
- ✓ Cutler Bay Express service - **2019**
- ✓ Medley Central Commuter Route - **2019**
- ✓ Miami Shores SMART Feeder Route - **2019**
- ✓ Palmetto Bay Transit Service & Station - **2019**
- ✓ Pinecrest TransitWay Circulator - **2019**



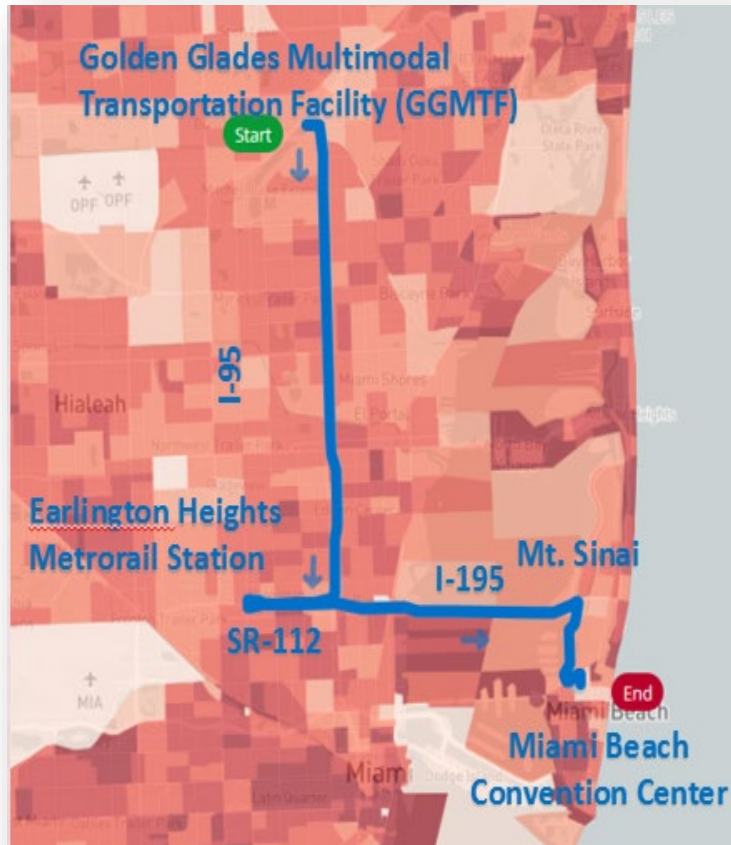


# NW Miami-Dade Express Bus Express Rapid Transit (BERT) New Park & Ride Lot Opening 2nd Quarter 2019 with New BERT Service



- Express Bus Service from I-75/ Miami Gardens Park and Park & Ride Lot along I-75 and SR-826 to the Palmetto Metrorail Station
- Funded by FDOT and Operated by Miami-Dade County

# Miami Beach Express North Bus Express Rapid Transit (BERT) Service in 2022



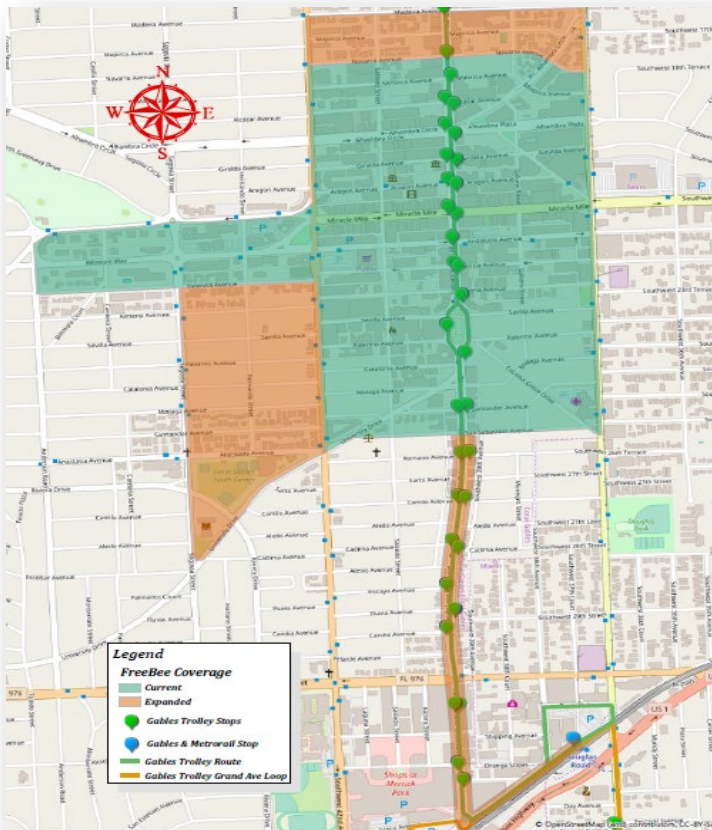
- **Design 2020 & Construction 2021** for New Express Service from the Golden Glades Interchange
- Multimodal Transportation Facility on I-95 to SR-112/I-195 and Earlington Heights Metrorail Station to and from Miami Beach Convention Center

# Northeast Corridor Commuter Rail Demonstration Station Funding Allocated in 2018



- In 2019 Tri-Rail will begin service along FEC to Downtown Miami
- Two components:
  1. Capital for construction of a temporary platform
  2. Operations of the Service

# City of Coral Gables Flex Service via Electric Vehicles January 2019- Service Initiated



- First/Last Mile Connection
- Includes new service area to the West & South
- Direct Connection to Douglas Metrorail Station
- Ridership 31% increase

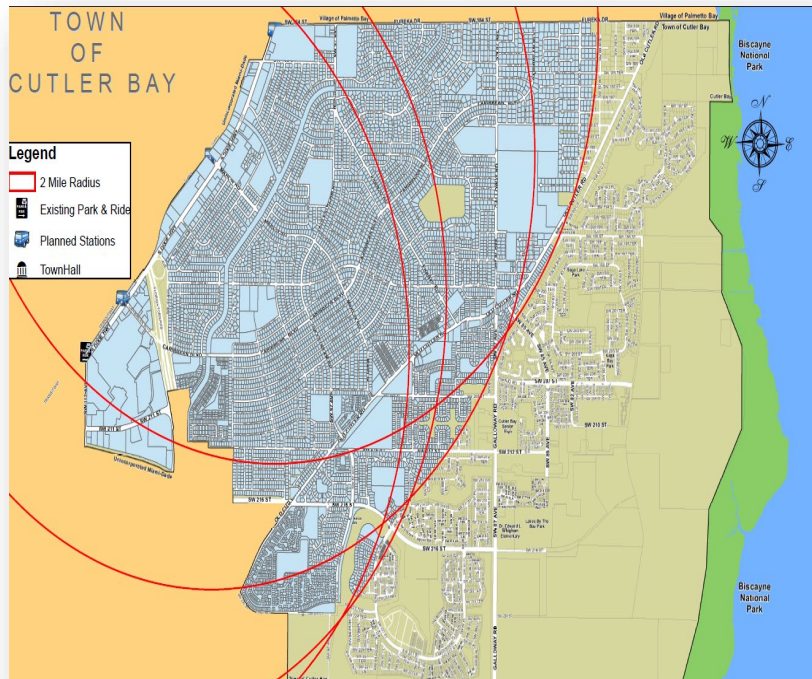
On-Demand Service

# City of Coral Gables Flex Service via Electric Vehicles January 2019- Service Initiated



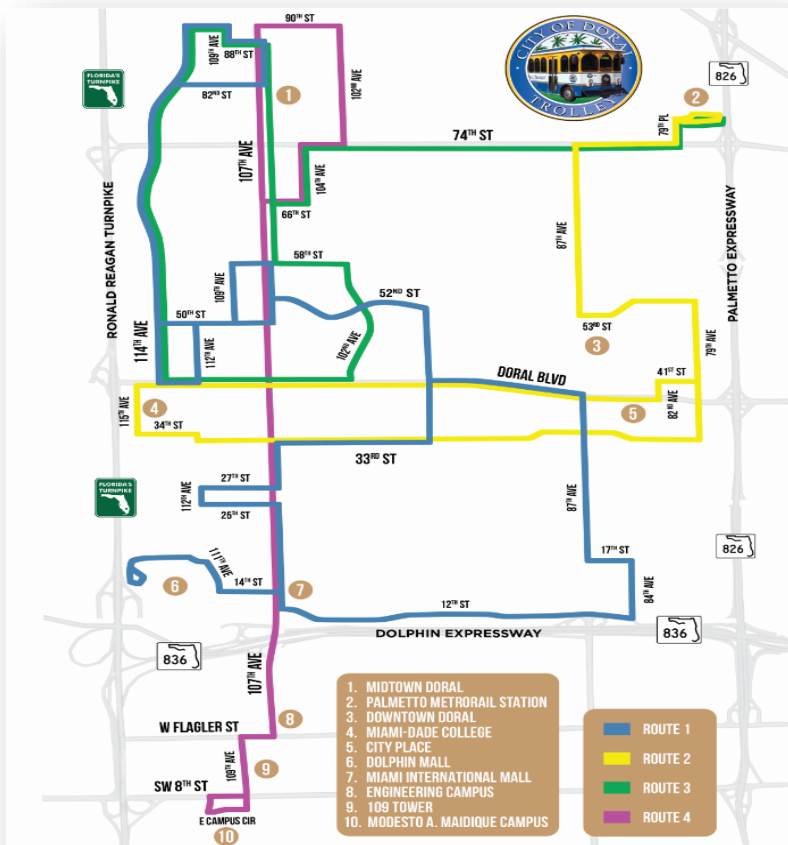
On-Demand Service

# Town of Cutler Bay Cutler Bay Express Spring 2019 – Anticipated Service



- First/Last Mile Connection
- Direct connections to South Dade Transitway, Dadeland South Metrorail
- Congestion relief & parking relief at Dadeland South Metrorail Station
- Currently in procurement

# City of Doral FIU Trolley Service September 2018 – Service Initiated



- First/Last Mile Connection
- New service along 107 Ave. from the FIU Panther Station north to NW 90 Street
- Provides connectivity to Palmetto Metrorail Station and FIU Panther Station

# City of Doral FIU Trolley Service September 2018 – Service Initiated

An advertisement for the Doral Trolley service. On the left, a hand holds a smartphone displaying a map application. The background is a red banner with white and yellow text. On the right, a yellow and blue Doral Trolley is shown in motion. The text on the banner includes:

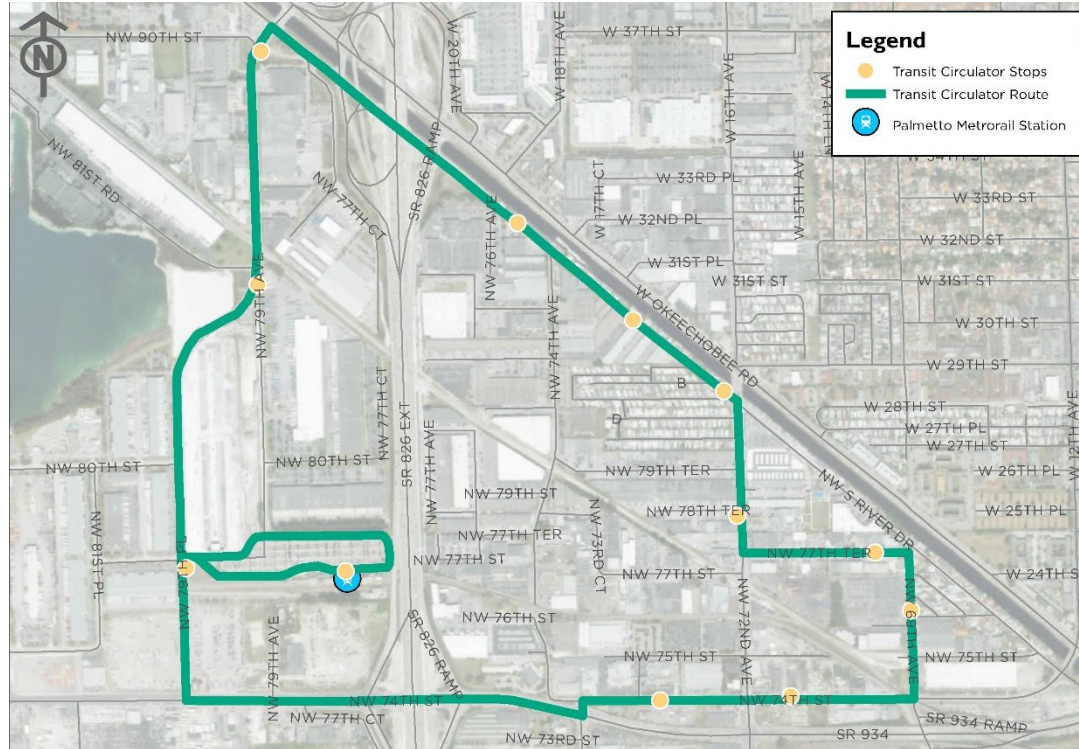
COME ON  
AND TAKE A  
**FREE RIDE**  
TO SHOPPING CENTERS  
TO OUTSTANDING RESTAURANTS  
TO BEAUTIFUL PARKS AND RECREATION AND  
EVEN CONNECTING TO THE METRORAIL!

A "FREE WiFi" logo is also present in the bottom right corner of the banner.

Trolley Service



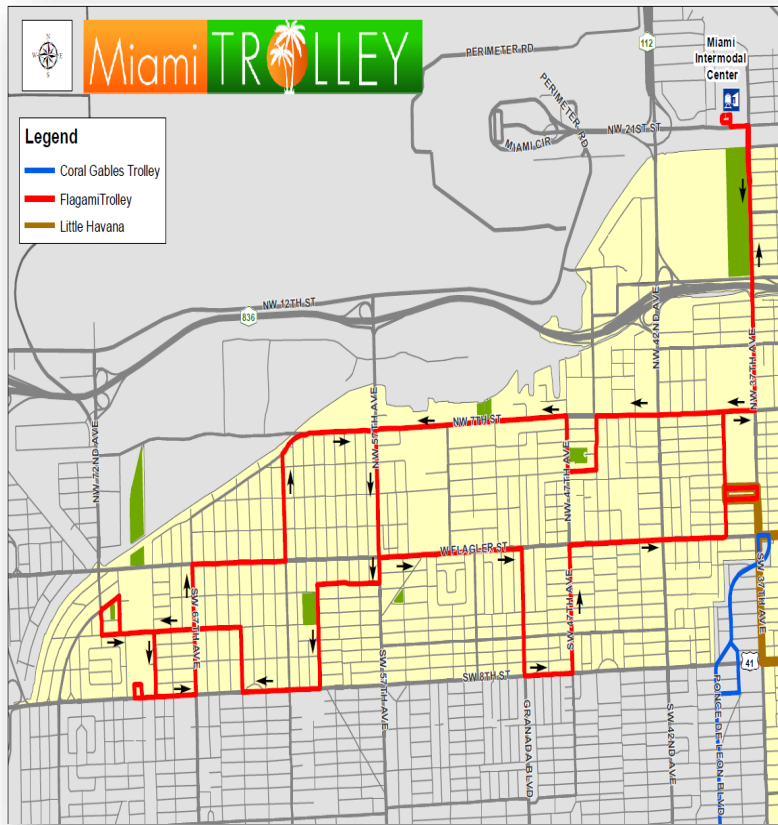
# Town of Medley Central Commuter Route Summer 2019 – Anticipated Service



- First/Last Mile Connection
- Connects to Palmetto Metrorail Station, Doral Trolley, & Metrobus Routes
- Provides Service to Employment Centers

Fixed Feeder Route

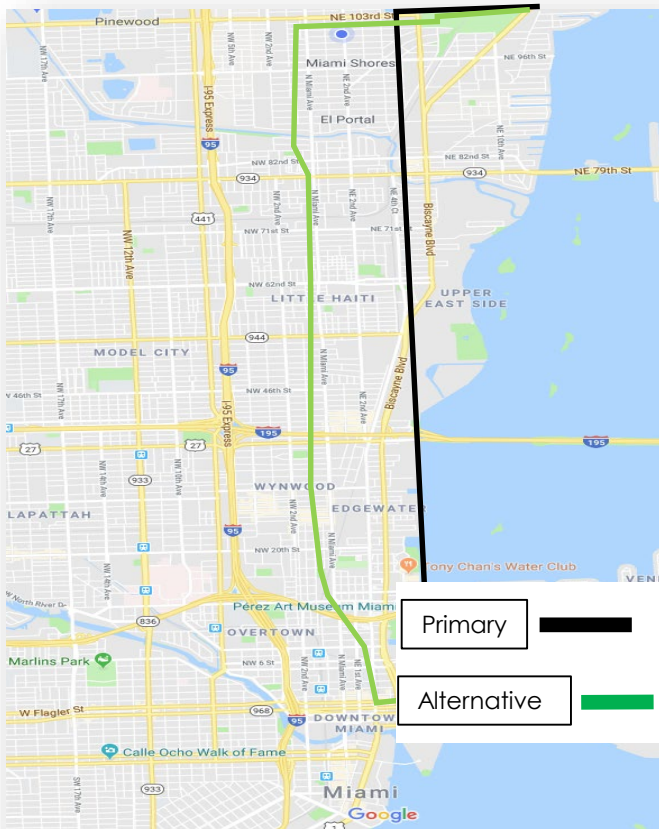
# City of Miami Flagami Fixed Route July 2018 – Service Initiated



- First/Last Mile Connection
- Connection to Miami Intermodal Center
- Connects Coral Gables and Little Havana Routes

Fixed Feeder Route

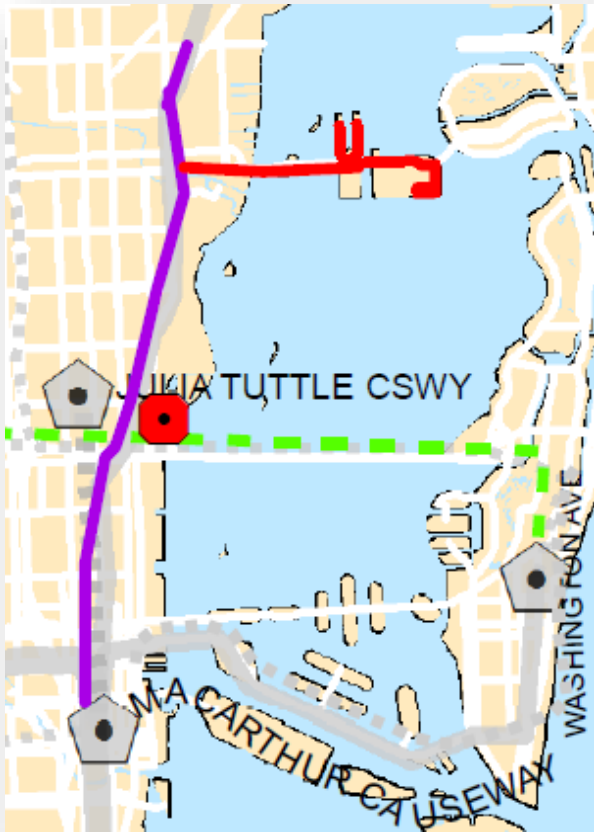
# Village of Miami Shores SMART NE Corridor Feeder Routes January 2019 – Service Initiated



- First/Last Mile Connection
- New Service with Direct Connection to the NE Corridor
- Connecting from the Village's Community Center to the Brightline Station in Downtown Miami

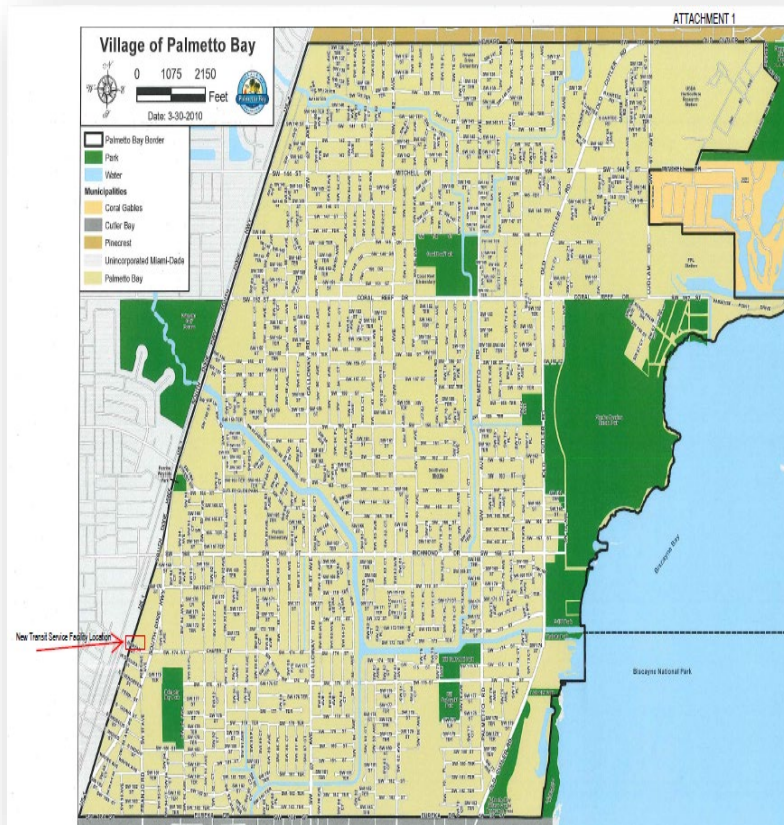
Fixed Feeder Route

# North Bay Village SMART NE Corridor Feeder Route (Red) March 2019 – Service Initiated



- First/Last Mile Connection
- Connection at the Biscayne Blvd. and 79<sup>th</sup> Street Transit Station
- Improves Accessibility and Connectivity

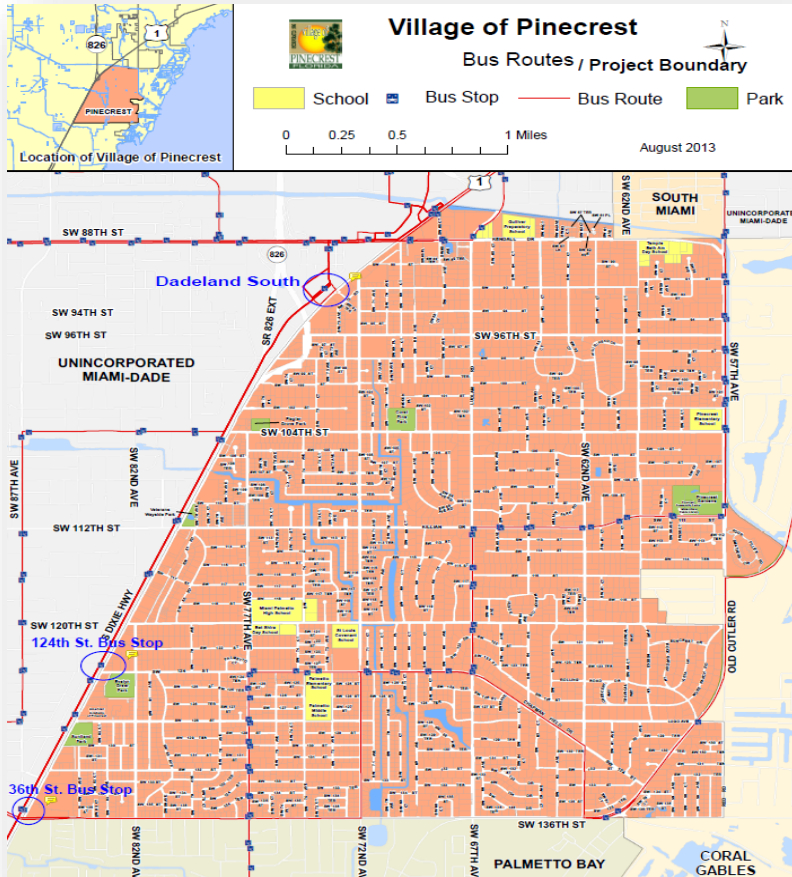
# Village of Palmetto Bay New Transit Service and Station Spring 2019 – Anticipated Service



- First/Last Mile Connection
- Connections to the South Dade Transitway & Dadeland South Metrorail Station
- New Transit Station in Palmetto Bay
- Currently in procurement

# Village of Pinecrest Transitway Circulator

## January 2019 – Service Initiated



- First/Last Mile Connection
- Connections to the South Dade Transitway and Dade South Metrorail Station
- Peak Hour Congestion Relief
- Ridership increase 12%

On-Demand Service



Miami-Dade Transportation  
Planning Organization

# Village of Pinecrest Transitway Circulator January 2019 – Service Initiated



On-Demand Service



Miami-Dade Transportation  
Planning Organization

# Lisa Colmenares, AICP Program Development Manager

[www.MiamiDadeTPO.org](http://www.MiamiDadeTPO.org)



#MiamiSMARTPlan



Miami-Dade Transportation  
Planning Organization