

## APPENDIX F

# Restroom Design Guidelines/Standards Sample

### F.1 Summary

Through the case study at Dallas/Ft. Worth International Airport (DFW) in Appendix C.1, the airport shared their “Guidelines for Public Terminal Toilets.” This document is shown on the following pages. More airports are creating design standards for their facility, especially the restrooms. Standard layouts, products, and details provide continuity throughout the airport and streamline the design and construction processes. Other airports with guidelines on the Internet are listed in the Bibliography in Appendix H.



DALLAS/FT. WORTH  
INTERNATIONAL AIRPORT

## GUIDELINES FOR PUBLIC TERMINAL TOILETS



**Airport Planning Department**

June 14, 2007  
Rev: March 22, 2012

## Introduction

### Introduction

Customer satisfaction surveys have confirmed that restroom facilities are a major contributor to the passengers' satisfaction opinion of an airport. Cleanliness, general appearance, functional layout, and convenient availability (location) of the restroom facilities form the basis of their impressions. Therefore, special attention needs to be paid to the layout, material finishes, features and amenities of the public restrooms.

In an effort to provide the highest level of customer service, DFW has developed the following design criteria that document the standard appearance of public restrooms in the terminals. This criteria should be used when renovating, replacing or new construction of restroom facilities.

All proposed modifications or new construction shall comply with the requirements of the Airport's Design Criteria Manual (DCM) and all applicable building codes and shall be submitted to the Airport in accordance with the process identified in the Airport's Design Criteria Manual. This document does not supersede the requirements of any applicable code and/or regulation. Any conflicts between the requirements of this document and the Design Criteria Manual shall be directed to the Planning Department for resolution. In addition, the pictures and drawings in this document reflect the basis and intent of the design of the toilet rooms and are for illustration purposes only. They may not accurately reflect the actual physical condition, therefore are not for construction purposes, but must be applied to specific site situations.

Dimensions and details shown in this manual are for reference only. It is the responsibility of the designer to field verify the as-built conditions of the terminal prior to the start of the design process. Furthermore, it is the designer's responsibility to fully review the most current version of all codes and the Airport Design Criteria Manual. All work must comply with federal and state ADA regulations, DFW Airport Building Code Amendments, and all other applicable codes.

Information provided within this criteria manual is subject to change.



## Introduction

	Page
<b>Table of Contents</b> .....	i
<b>Introduction</b> .....	1
<b>1.0 Design Concepts</b> .....	2
1.1 Locations .....	2
1.2 Toilet Rooms.....	3
1.3 Janitor's Room.....	3
1.4 Entry Points / Signage .....	4
<b>2.0 Fixtures and Accessories</b> .....	7
2.1 Lavatories .....	7
2.2 Toilets .....	9
2.3 Urinals.....	10
2.4 Toilet Partitions .....	11
2.5 Toilet Room Accessories.....	12
2.6 Drinking Fountains.....	13
<b>3.0 Finishes</b> .....	14
3.1 Floor Surfaces .....	14
3.2 Wall Surfaces.....	15
3.3 Ceiling Surfaces .....	15
3.4 Lighting / Electrical .....	16
3.5 Corner Guards and Edge Protection Profiles.....	16
3.6 Miscellaneous Requirements .....	17
<b>4.0 Appendix</b> .....	19
4.1 Toilet Accessories Specifications .....	19
4.2 Corner Guards.....	19
4.3 Wall Protection and Floor Transition Profiles .....	19
4.4 Floor Material Finish Index .....	20
4.5 Wall Material Finish Index .....	20
4.6 Ceiling Finish Material Index .....	21
4.7 Lavatory Finishes .....	21
4.8 Paint Finishes .....	21
4.9 Door Hardware .....	21
4.10 Plumbing Fixtures and Specifications .....	21



## Fixtures and Accessories

### 1.0 Design Concepts

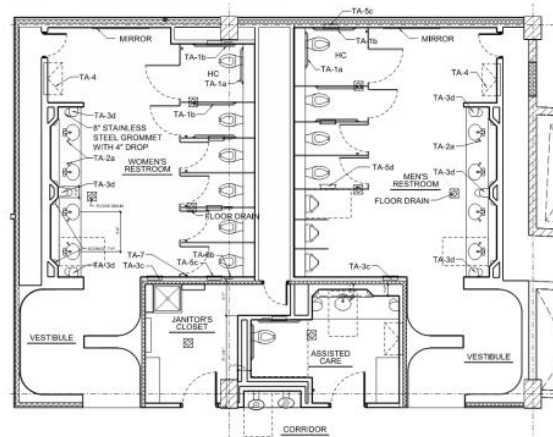
The following section defines the minimum design intent for the placement and design for toilet facilities within the Terminal Area.

### 1.1 Locations

Locations of toilet and support rooms will be dependent on the design location and requirements.

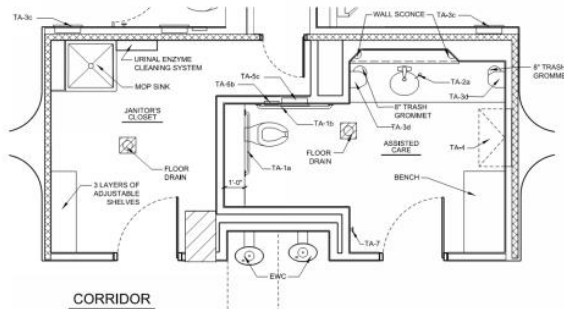
The guidelines for placement of toilet and support rooms are as follows:

- a. Restroom facilities should be evenly and conveniently distributed throughout the main public areas with a maximum walking distance of 150 feet to a restroom; therefore restrooms should be approximately 300 feet apart.
- b. When possible, each location should include; men, women, assistance rooms and a janitor's room for maintenance and clean-up storage. These four (4) rooms should always be grouped together and the respective entry points should be adjacent to each other so that they are visible to the passengers. The Assisted Care Room should be signed with the men's and women's handicap symbols. (See Diagram: #1 and #2)
- c. Circulation in rooms with larger numbers of fixtures should be laid out in a loop to avoid dead-end conditions.



(Refer to the Appendix for toilet accessories information)

**DIAGRAM #1**



**DIAGRAM #2**

(Refer to the Appendix for toilet accessories information)



## Fixtures and Accessories

## 1.2 Toilet Rooms

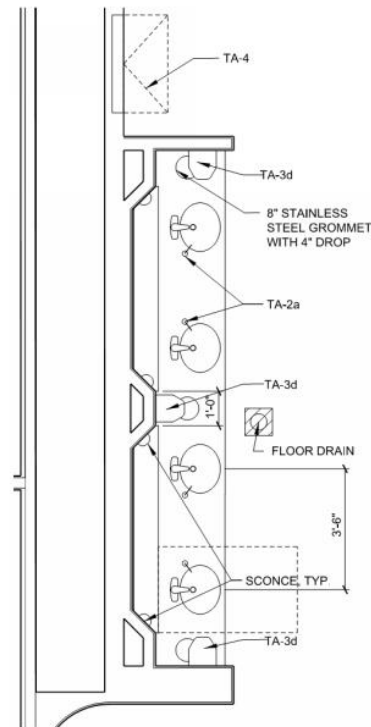
The guidelines for toilet rooms are as follows:

- a. The toilet fixture counts within each men and women toilet room should be calculated based on the function and occupancy of the terminal area and will include the following amenities (specific requirements will be found in following sections):
  1. Continuous lavatory countertop.
  2. Toilet stalls with ceiling hung partitions.
  3. The wall behind the toilet and urinal will incorporate a 12" deep luggage shelf.
  4. Floor drain(s) in a level floor. (See Diagrams #1, #2 and #3)
- b. The Assisted Care Restroom will always contain the following:
  1. One (1) lavatory counter.
  2. One (1) handicapped toilet.
  3. One (1) recessed diaper changing station.
  4. One (1) non-movable bench for nursing mothers or an attendant to wait (Note: This bench may also satisfy the luggage shelf requirement).
  5. The wall behind the toilet will incorporate a 12" deep luggage shelf. (See Diagram #2)
  6. Each door shall be equipped with kickplates and door hardware and equipped with a corridor lock function (locked from the inside only and refer to appendix for finishes).
  7. Floor drain in a level floor. (See Diagrams #2, and #4)

### 1.3 Janitor's Room

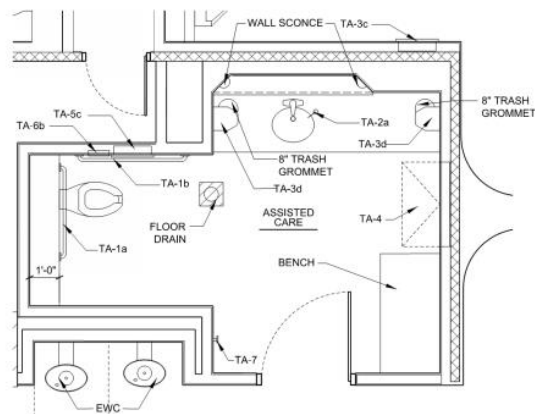
Provide a janitor's room adjacent to multi-stall toilet rooms. The room shall include the following minimum amenities: (See Diagram #2)

- Hose bib over a floor mounted mop sink with protective surfaces around mop sink as required by code.
- Mop hangers.
- Storage shelving.
- Floor drain.



(Refer to the Appendix for toilet accessories information)

**DIAGRAM #3**



(Refer to the Appendix for toilet accessories information)

**DIAGRAM #4**





## Fixtures and Accessories

- e. Electric water heater that meets the demand capacity.
- f. Access door to toilet chase.
- g. The entrance door shall be equipped with kickplates on the push side of the door.

### 1.4 Entry Points / Signage

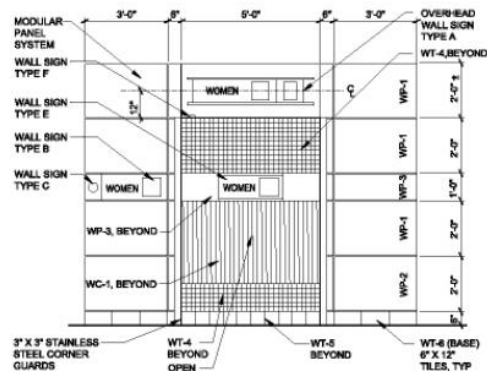
The guidelines for entry points are as follows: (See Diagram #5)

- a. The entries from the Terminal concourse/corridors should reinforce way finding by expressing a restroom queue.
- b. The entries into the toilet rooms must prohibit the direct visual pathways by use of a switchback entryway.
- c. The entries into the toilet rooms must be a minimum width of 4'-0".
- d. Entries should be designed to prevent line-of-sight from the public areas to the toilet areas.
- e. Inside the "T" access corridor shall be a transition area between the terminal and the toilet room. These transition walls shall be wall carpet and ceramic tile. (See Diagram #5 and #6)
- f. The finishes at eye level in the transition area should reinforce the overhead exterior signage package to confirm a passenger is headed into the correct room.
- g. The Terminal side or corridor walls at each toilet room entry point shall be designed using a 1/2" thick wall panelization system (by Marlite, or an approved equal).
- h. Orientation of the overhead sign shall be confirmed by the Airport. Signs should be installed as indicated in Diagram #5 and #6.



ENTRY POINT PHOTO

**DIAGRAM #5**



ENTRY POINT

**DIAGRAM #6**

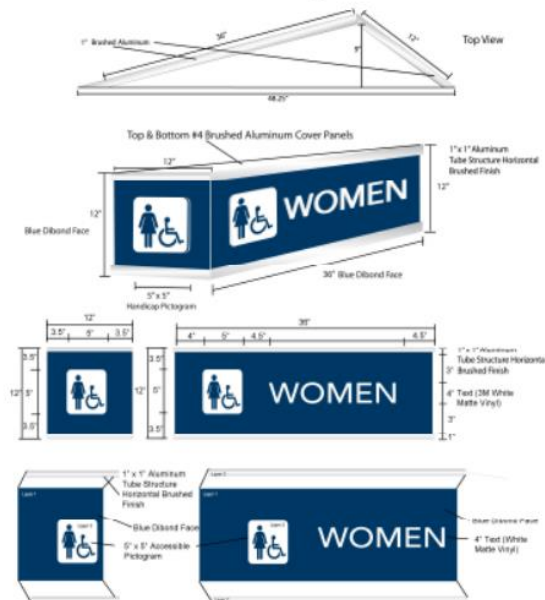
(Refer to the Appendix for wall panel information)



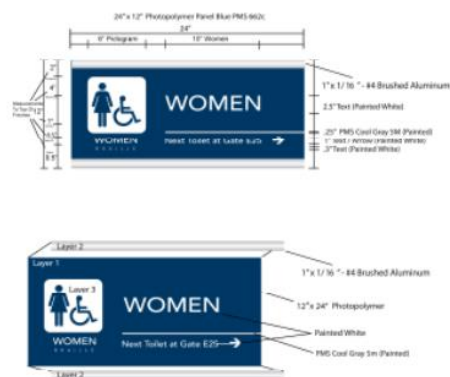
## Fixtures and Accessories

- i. Signs shall be installed to coordinate with the architectural wall materials of the entry point design.
- j. Room signs shall be installed to meet ADA guidelines and mounted adjacent to the entry opening and recessed into the 1'-0" x 3'-0" horizontal accent band. (See Diagram #6) If wall space is not available at the location indicated in the diagram, coordinate location with the Planning Department.

### WALL SIGN TYPE A Typical Sign Detail Overhead Sign



### WALL SIGN TYPE B Typical Sign Detail Entry Wall Sign



\*Rest Toilet Gate numbers are to be verified prior to fabrication and submitted to DFW Planning for prior approval.





## Fixtures and Accessories

### WALL SIGN TYPE C Severe Weather Sign

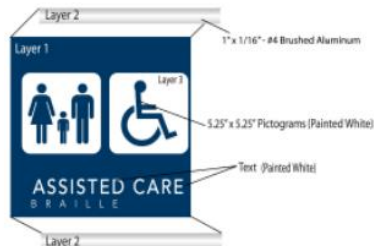


Photopolymer 1/8" Painted Red PMS 186  
5" Round Symbol to be centered vertically with wall sign.

### WALL SIGN TYPE D

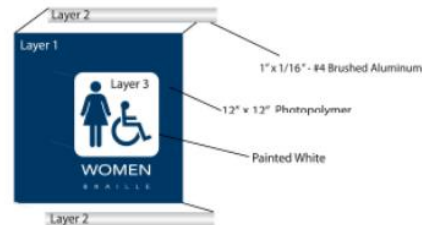
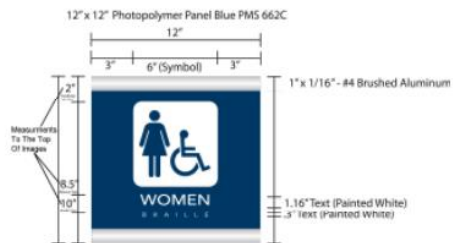
#### Typical Sign Detail

Assisted Care Wall Sign



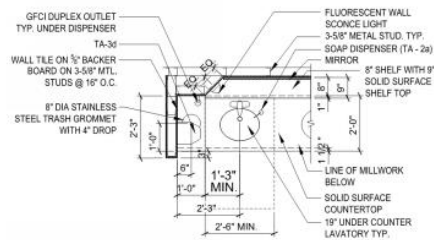
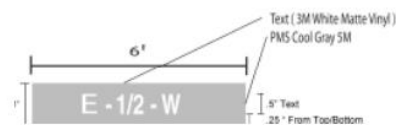
### WALL SIGN TYPE E Typical Sign Detail

Transition Wall Sign



### WALL SIGN TYPE F

Room I.D. Signs



**DIAGRAM #7**  
(Typical Lavatory Plan)



Dallas/Fort Worth International Airport  
Guidelines for Public Terminal Toilets – 03/22/12  
Page 6

## Fixtures and Accessories

### 2.0 Fixtures and Accessories

Each toilet room will receive the required plumbing fixtures and toilet accessories to serve the needs of a public toilet. This section will determine the quantities and locations of specific fixtures.

### 2.1 Lavatories

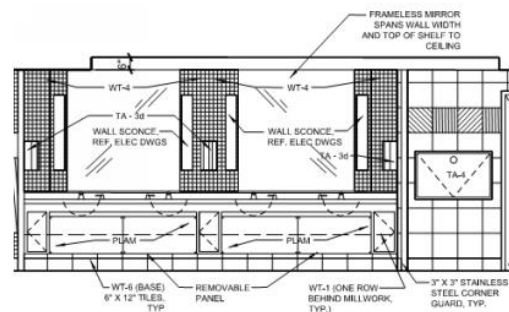
The guidelines for toilet room lavatories are as follows: (See Diagrams: #7, #8, #9, #10, and #11)

- a. Countertops shall be a solid surface material with matching backsplash on all attached walls. The backsplash shall be a minimum of 4" high.
- b. Provide groupings of two (2) large porcelain lavatory fixtures (Fixture L-1 section 4.10 without stoppers). Sinks shall be placed 42" on center (minimum) to allow adequate counter surface.
- c. Provide a large wall mirror in front of the lavatories between built-out wall pilasters. The pilasters will provide a repetition break in long wall conditions and also provide the opportunity to mount light sconces and surface mounted paper towel dispensers.
- d. An 8" diameter satin finished stainless steel trash grommet with a 4" (minimum) drop should be located in the countertop at each pilaster below the surface mounted paper towel dispenser. The trash receptacle (12" minimum wide) will be located in a lockable under-counter cabinet. (Terminal E only)
- e. A surface mounted center pull paper towel dispenser shall be located on the center pilaster above the trash grommet and one at each side wall above the trash grommet with clear visibility to meet ADA requirements.



**DIAGRAM #8**

(Standard Millwork Located in Terminal E)



**DIAGRAM #9**

(Standard Millwork Located in Terminal E)



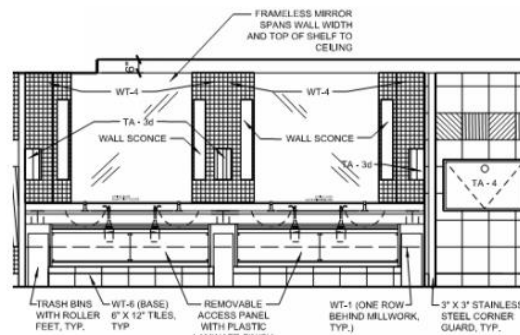
**DIAGRAM #10**

(Standard Millwork Located in Terminals A, B, & C)

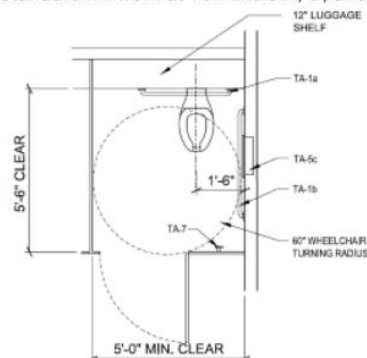


## Fixtures and Accessories

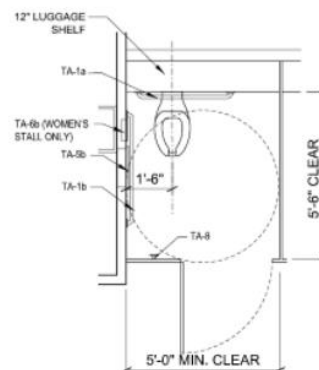
- f. Provide easily operated access panels to conceal pipes and water shut off valves under each sink.
- g. Provide an 8" deep purse shelf at back of counter with a 1" overhang.
- h. Provide a counter mounted liquid soap dispenser at each sink so that the spout drips into the sink. At American Airlines Terminals, these dispensers shall be foam soap dispensers. (Refer to appendix for dispenser type).
- i. Provide one (1) GFCI duplex receptacle at the remote end of the counter.
- j. Lever-operated and electronically controlled mechanisms are examples of acceptable designs; however, electronic control sensor faucets are the standard usage with pre-set warm water. (Note: The use of self-closing push valves are prohibited.)
- k. Although not recommend, if individual controls are used red and blue indicators are required for hot and cold water selections.
- l. Hot water pipes and drain pipes shall be insulated or otherwise protected from contact.
- m. Refer to Appendix and Section 2.5 for a list of approved toilet accessories and guidelines.



**DIAGRAM #11**  
(Standard Millwork at Terminals A, B, and C)



**DIAGRAM #12**  
(Typical Men's ADA Toilet Stall)



**DIAGRAM #13**  
(Typical Women's ADA Toilet Stall)

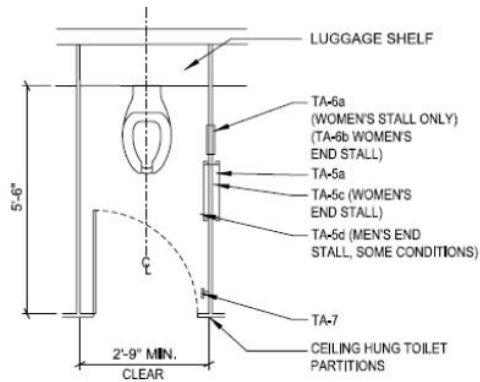


## Fixtures and Accessories

### 2.2 Toilets

The guidelines for toilets are as follows:  
(See Diagrams #12, #13, #14, and #15)

- a. Toilets shall be wall hung, white, vitreous china, siphon jet, elongated bowl, with white open-front plastic "contoured" seat without cover. Include proper wall mount chairs/hangers and plumbing chase.
- b. Grab bars must comply with the positioning of the toilet in the stall configuration.
- c. The handicapped accessible stalls shall be located at end of the row and comply with all applicable codes.
- d. Height of accessible toilets shall meet the requirements set forth in the Americans with Disabilities Act (ADA).
- e. Toilets will receive automatic flush controls, unless noted otherwise; they will be mounted on the back wall with the auxiliary flush button no more than 44" AFF.
- f. Automatic sensor flush controls need to have manual flush button equal to Sloan "Optima" Automatic No. 152 ES-S or EZ-Flush controls by Zurn.
- g. Refer to Section 2.5 for Toilet Accessory Guidelines.



**DIAGRAM #14**  
(Typical Toilet Stall Plan)



**DIAGRAM #15**



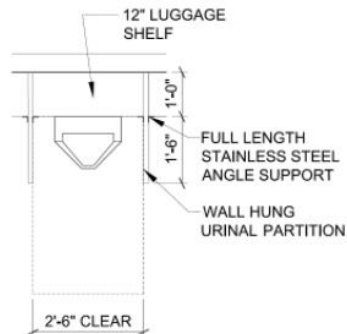


## Fixtures and Accessories

### 2.3 Urinals

The guidelines for urinals are as follows:  
(See Diagrams #16, #17, and #18)

- a. Urinals shall be white, vitreous china, wash out type, wall hung with a large tapered elongated bowl rim (extends at least 14" from the vertical surface) mounted at a maximum of 17" AFF.
- b. Flush controls shall be automatic, unless noted otherwise; they will be mounted on the back wall with the auxiliary flush button equal to Sloan "Optima" Automatic No. 195 ES-S or EZ-Flush controls by Zurn no more than 44" AFF. (Note: Coordinate flush valve design and components for ADA accessible urinals with luggage shelf, See Diagram #18)
- c. Provide an 18" privacy partition between each urinal.
- d. Provide a 12" deep luggage shelf above the urinal mounting surface. ADA urinal will have lower shelf and lower flush assembly.
- e. A clear floor space 30" x 48" shall be provided in front of accessible urinal to allow forward approach.
- f. Accessible urinals installed in alcoves deeper than 24" need additional maneuvering clearance of 36".



**DIAGRAM #16**  
(Typical Urinal Plan)



**DIAGRAM #17**



**DIAGRAM #18**





## Fixtures and Accessories

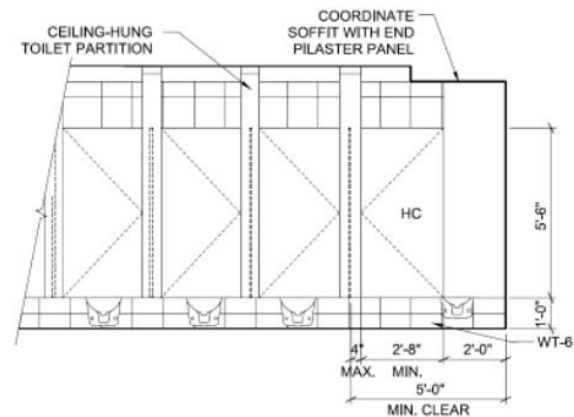
### 2.4 Toilet Partitions

The guidelines for toilet partitions are as follows (See Diagrams #19A and #19B):

- a. Partitions will be constructed in commercial grade stainless steel.
- b. Partitions to be ceiling hung with extensions to the floor only as needed for panel stabilization.
- c. Floor mounted toilet partitions are only permitted if existing conditions preclude overhead structural support, and must also be owner approved.
- d. Partition shall extend from 12" AFF to 78" AFF for privacy.
- e. Latches should be easy sliding bars and shall be ADA compliant. (Standard thumb turn dials not acceptable)
- f. Standard toilet stalls shall have a minimum clear dimension of 33" wide and 66" deep to provide enough room in front of the toilet to maneuver the door and carry-on luggage.
- g. Provide a self closing door for ADA accessible toilet stalls.
- h. Standard toilets shall have water closet centered within the stall and 16"-18" to centerline of water closet to partition for accessible stalls.
- i. Construct a 12" deep baggage shelf wall behind each toilet.
- j. Provide a purse/coat hook on partition side panel, opposite the door swing, to prevent panels and doors from becoming dented. Install hook at a minimum height of 60" AFF to prevent theft of items. Coat hooks must be tamperproof, no face screws.



**DIAGRAM #19A**



**DIAGRAM #19B**

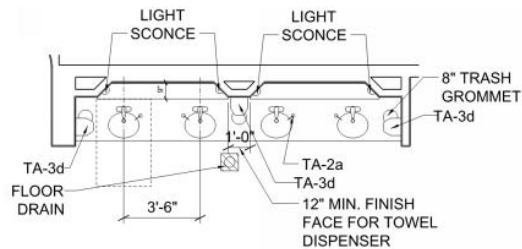


## Fixtures and Accessories

### 2.5 Toilet Room Accessories

The guidelines for toilet room accessories are as follows:  
(See Diagrams #1 - #3, #9, #11 - #14, and #20)

- a. A toilet stall shall include the following minimum partition mounted toilet accessories:
  - a. One (1) stainless steel jumbo toilet tissue dispenser with capacity to hold two (2) toilet tissue rolls. (each side for partition type dispensers)
  - b. One (1) toilet seat protector.
  - c. One (1) feminine product receptacle. (Women's only.)
- b. All toilet accessories are to be commercial grade and satin-finish stainless steel and Type 302 or 304, 22 gauge. All flanges are to be beveled and seamless.
- c. All similar type of restroom accessories should be selected from the same manufacturer to keep continuity and uniform appearance.
- d. Grab bars are to be 1-1/2" diameter stainless steel, 18 gauge, Type 304, brushed satin finish with peened gripping surface.
- e. Grab bars are to be mounted using concealed plates, without exposed fasteners; concealed anchors are to be used for each specific wall type.
- f. Soap dispensers are to be mounted on the countertop surface adjacent to the lavatory.
- g. A recessed 12 gallon waste receptacle shall be mounted at each door location.
- h. Refer to Appendix for all toilet accessory types.



(Refer to the Appendix for toilet accessories information)

**DIAGRAM #20**



(Refer to the Appendix for toilet accessories information)

**DIAGRAM #21**



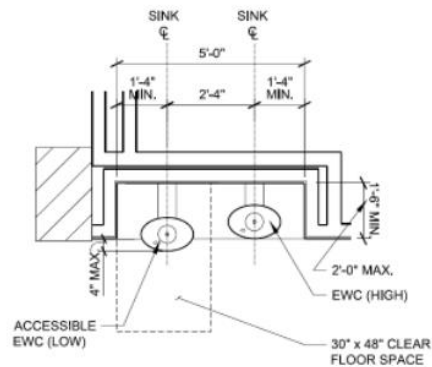
## Fixtures and Accessories

- i. Each toilet room shall include one (1) recessed stainless steel baby changing station. (See Diagram #21)
- j. Provide a full-height dressing mirror out of the main circulation path.

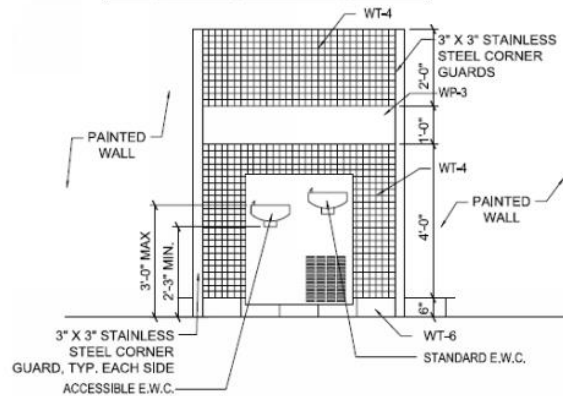
### 2.6 Drinking Fountains

The guidelines are as follows for electric water coolers (EWC) (See Diagrams #22, #23 and #24):

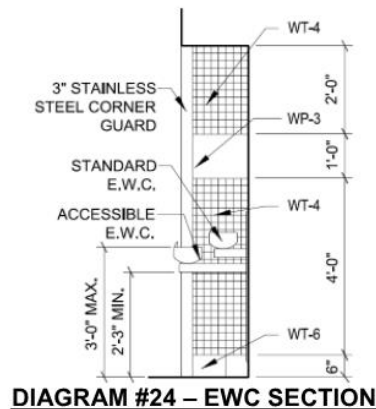
- a. EWCs shall be wall-hung double units recessed within a wall alcove. (Note: Some Terminals have a central water cooling system; therefore the Architect is to investigate connecting to this system, if available.)
- b. Design and placement of the EWC shall allow for a clear floor space of 30" (minimum) x 48" (minimum) with spout height at 36" (maximum) from floor. EWC shall not protrude from main corridor wall more than 4"; therefore it is suggested to design for a recessed condition.
- c. If space allocation is limited, the designer has the option to specify a ceiling condenser (Split System).



**DIAGRAM #22 – EWC PLAN**



**DIAGRAM #23 – EWC ELEVATION**



**DIAGRAM #24 – EWC SECTION**



## Finishes

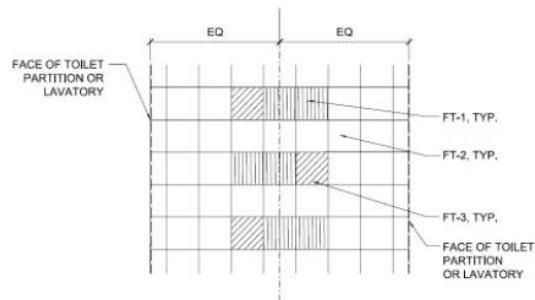
### 3.0 Finishes

All restrooms shall be finished with the same materials, colors, and patterns.

### 3.1 Floor Surfaces

The guidelines for floor surfaces are as follows (See Diagrams #25 and #26):

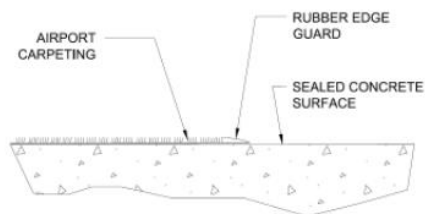
- Flooring shall be ceramic, porcelain tile rated for heavy-duty use or terrazzo. Natural stone is semi-porous, therefore should not be used on floors.
- Tiles should be large; 12" x 12" nominal minimum to reduce grout lines.
- Joints should be tight; 1/8" maximum. Installation shall use water based "unsanded" epoxy grout and sealed.
- The typical floor pattern shall be centered within the circulation pathway, with the exception in the entry vestibule. Design should be specific to each restroom design. (Refer to Diagram #25 and #26)
- There shall be a flush stainless steel transition strip between solid floor surfaces where carpet abuts a tiled surface. A continuous rubber transition strip shall be added at areas where carpet abuts a concrete floor. (Reference Diagram #27, #28, and #29)



**DIAGRAM #25**  
(Typical Floor Tile Pattern)



**DIAGRAM #26**



Transition at Carpet and Concrete Floor

**DIAGRAM #27**  
(Refer to the Appendix for wall information)



## Finishes

### 3.2 Wall Surfaces

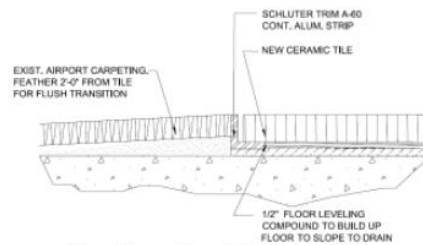
The following guidelines for Entry Point wall surfaces are as follows:  
(See Diagram #30 and #31)

- Walls within the restroom shall be polished non-porous ceramic tile from floor to the ceiling.
- Joints should be tight; 1/8" maximum. Installation shall use water based "unsanded" epoxy grout and sealed.
- Color, patterns, finish of wall tile should maximize a clean-looking, well-lighted appearance.
- All restrooms shall be finished with the same materials, colors, and patterns as indicated in the Appendix.
- Wall base shall be 6" maximum height polished ceramic tile. Wall grout lines to match with floor grout lines.

### 3.3 Ceiling Surfaces

The guidelines for ceiling surfaces are as follows:

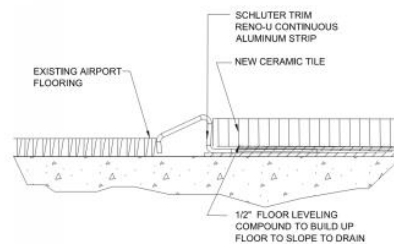
- Install 24" of gypsum drywall soffit along the restroom ceiling perimeter at a minimum of 4" below adjacent acoustical ceiling.
- Toilet Rooms: Install 2'x2' lay-in acoustical ceiling panels for damp conditions (with tegular edge) in a "white" metal T-grid system.
- Janitor's Rooms: Install 2'x2' lay-in acoustical ceiling panels for damp conditions (with square edge) in a "white" metal T-grid system.
- Entry vestibule and s-turn pathway shall have gypsum board ceiling throughout. Provide access panel as required for systems accessibility above ceiling.



Floor Transition at Carpet and Tile

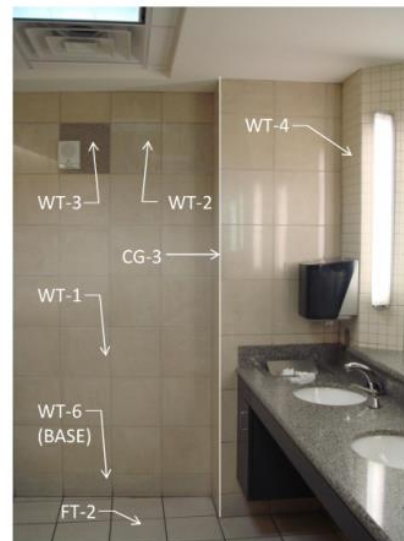
#### **DIAGRAM #28**

(Refer to the Appendix for wall information)



#### **DIAGRAM #29**

(Refer to the Appendix for wall information)



#### **DIAGRAM #30**

(Refer to the Appendix for wall and floor information)





## Finishes

### 3.4 Lighting / Electrical

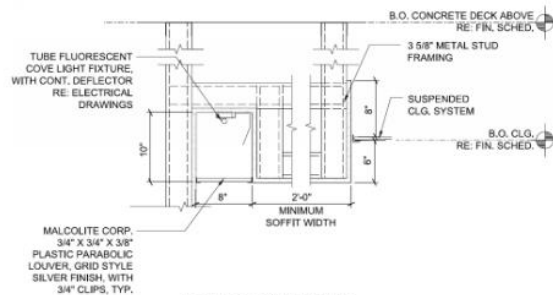
The guidelines for lighting and electrical are as follows:

- a. Light level should be even throughout the toilet room to reinforce the clean appearance.
- b. Include appropriate GFCI duplex receptacles for public usage at each end of counter.
- c. Lighting shall be connected to motion occupancy sensor for all toilet rooms and janitor closets. (No wall mounted switches permitted) Install fixtures to emergency circuits, as required by code.
- d. Use energy efficient fluorescent lamps in concealed light coves, down lights, and accent fixtures.
- e. Wall sconce fixtures are required at the sink fixtures. (See Diagrams #1-#3, #7, #9, #11, and #20)
- f. Light fixture size shall match the size of the acoustical ceiling design as follows:
  1. Toilet Room: 2'x2' lay-in fluorescent fixture with a parabolic lens with T8 warm white fluorescent lamps with an energy efficient ballast.
  2. Janitor's Room: 2'x4' lay-in fluorescent fixture with diffused lens with T8 warm white fluorescent lamps with an energy efficient ballast.
- g. Downlights shall be fluorescent lamps with energy efficient ballast mounted in round, clear anodized reflector.
- h. Cove lighting is used above all toilet stalls and urinals. Install  $\frac{3}{4}$ " square reflective continuous parabolic diffusers along all light coves. (Reference Diagram #32)



**DIAGRAM #31**

(Refer to the Appendix for wall and floor information)



**DIAGRAM #32**

(Refer to the Appendix for wall information)



## Finishes

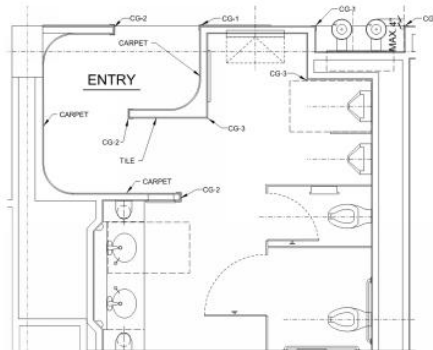
### 3.5 Corner Guards and Edge Protection Profiles (Reference Diagram #33 and #34)

- At locations where Marlite wall panels extend to tile, finish each edge with a stainless steel end piece. (Reference Diagram #31)
- Locations at the main restroom entry vestibule, each outside corner within the vestibule shall be finished with a surface mounted 3" corner guard. (Reference Diagram #33)
- Each corner at interior partition locations within the restroom require a quarter round stainless steel edge protection profile to be secured with mortar under tile. (Reference Diagram #32)

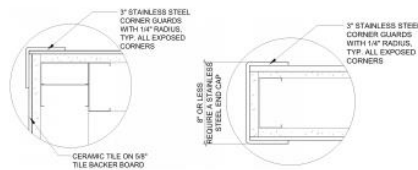
### 3.6 Miscellaneous Requirements

The guidelines for other requirements are as follows (Reference Diagrams #35-#38):

- Plumbing:
  - Provide the appropriate number of clean-outs and floor drains.
  - Install clean-outs at water closet rim height at each end if lateral line.
  - Install lavatory under counter clean-outs at each end of later line.
  - Install urinal clean-out within each recessed flush device access panel.
  - Install clean-out at each electric water cooler (EWC).
  - Install trap primers at each floor drain with integral water connection.
  - Install automatic faucets with mixing valve below each sink.
  - Install under counter sinks with stainless steel safety clips.
- HVAC: Install the exhaust ventilation to utilize the light cove void space in lieu of installing vents/grilles in the toilet room ceiling and shall be designed to achieve negative pressure in all toilet rooms.

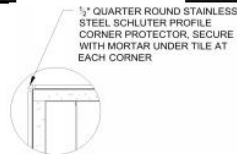


**DIAGRAM #33**  
(Refer to the Appendix for information)



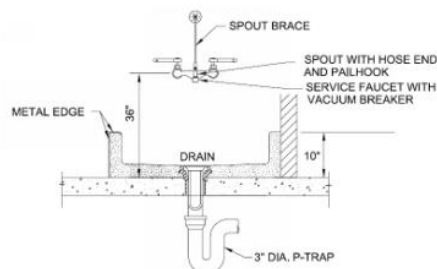
**CG-1**

**CG-2**



**CG-3**

**DIAGRAM #34**  
(Refer to the Appendix for information)

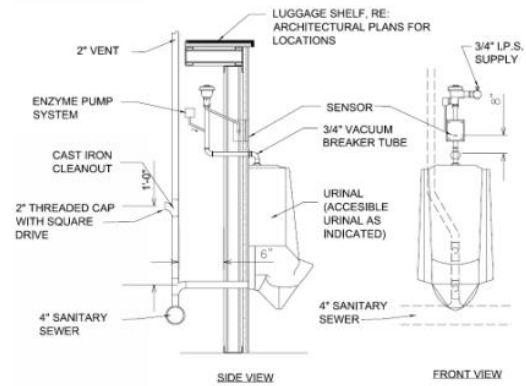


**DIAGRAM #35**



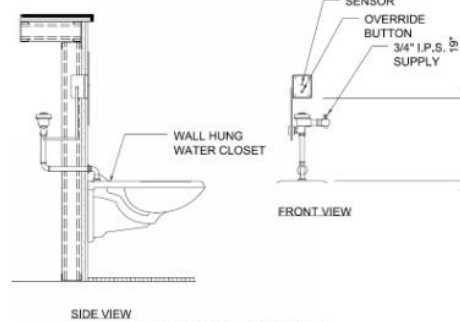
## Finishes

- c. Ceiling Speakers: Install terminal Fire Alarm and Voice Evacuation (FAVE) speaker system and connect to central backbone location. Public announcements and paging will require a separate speaker system.
- d. Air Fresheners (automatic): Locate devices on accent wall tiles.
- e. Urinal Enzyme Drip System: The drip system will consist of a centrally located reservoir installed in an adjacent Janitor Closet. A 110V electrical connection will be required in the Janitor Closet for the fluid pump. The supply lines will be concealed in the plumbing chase. Provide a polyvinyl non-gas emitting manifold and tubing that starts from the pump and goes to each urinal.
- f. Install heat trace on all sanitary sewer lines exposed to freezing conditions.

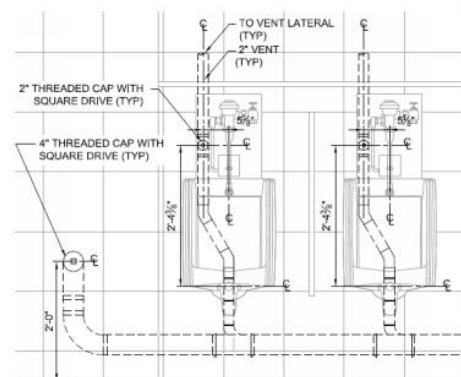


(Enzyme System)

**DIAGRAM #36**



**DIAGRAM #37**



**DIAGRAM #38**



## Appendix

### 4.0 APPENDIX

#### 4.1 TOILET ACCESSORIES SPECIFICATIONS

Acceptable manufacturer(s):

1. Bobrick Washroom Equipment Co.
  2. American Specialties, Inc.
  3. Approved Equal
- \* All toilet accessories to be equal the same.

Acceptable product(s):

1. (TA-1a) 36" grab bars in toilet compartments: B-6806.99 x 36 by Bobrick
2. (TA-1b) 42" grab bars in toilet compartments: B-6806.99 x 42 by Bobrick
3. (TA-2a) Lavatory Mounted Soap Dispenser: B-8226 by Bobrick
4. (TA-2b) Lavatory Mounted Foam Soap Dispenser: To be provided by the airline maintenance department and installed by the contractor.
5. (TA-3a) Recessed Combination Paper Towel Dispenser and Waste Receptacle (locate in high volume toilet rooms): B-3944 by Bobrick
6. (TA-3b) Surface Mounted Combination Paper Towel Dispenser and Waste Receptacle (locate in low volume toilet rooms): B-3699 by Bobrick
7. (TA-3c) Recessed Waste Receptacle (locate in high volume toilet rooms): B-3644 by Bobrick
8. (TA-3d) Surface Center Pull Paper Towel Dispenser (locate in high volume toilet rooms): GP58201 by Georgia Pacific
9. TA-4) Recessed Stainless Steel Baby Changing Station: KB 110-SSRE CRE by Koala Bear Products
10. (TA-5a) Partition Mounted Toilet Tissue and Seat Cover Dispenser (Capacity: Two toilet paper rolls): B-347 by Bobrick
11. (TA-5b) Partition Mounted Toilet Tissue and Seat Cover Dispenser (Flush on one side of partition to allow clearance for grab bar, Capacity: Two toilet paper rolls): B-3471 by Bobrick
12. (TA-5c) Recessed Toilet Tissue and Seat Cover Dispenser (Capacity: Two toilet paper rolls): B-3474 by Bobrick
13. (TA-5d) Surface Mounted Toilet Tissue and Seat Cover Dispenser (Capacity: Two toilet paper rolls): B-3479 by Bobrick (To be used in the men's restroom where there is an even number of toilet stalls and the only option.)

14. (TA-6a) Partition Mounted Feminine Napkin Disposal (serves two stalls): B-354 by Bobrick.
15. (TA-6b) Recessed Feminine Napkin Disposal: B-353 by Bobrick
16. (TA-7) Surface Mounted Coat Hook: B-211 by Bobrick.
17. (TA-8) 34" Utility shelf with mop and broom holders and hooks: B-239 by Bobrick
18. (TA-9) 28 Quart Wastebasket – Black: by Rubbermaid 2956
19. (TA-10) Stainless Steel Door Bumper with plastic end cap; mounted to outer lower corner of door where it comes in contact with adjacent wall or toilet partition. Submittal required by Contractor for approval.

#### 4.2 CORNER GUARDS

Acceptable manufacturer(s):

1. InPro Corporation
2. Blanke Corporation
3. Schluter Systems

Acceptable product(s):

1. (CG-1) 3" X 3" Satin finish Stainless Steel surface mounted corner guard, exposed edges and corner rounded; with pressure sensitive adhesive backing; no exposed fasteners. Length: length of wall.
2. (CG-2) Stainless Steel End Wall Guard surface mounted, exposed edges, and corner rounded; with pressure sensitive adhesive backing; no exposed fasteners. Width: width of wall up to 8". Length: length of wall.

#### 4.3 WALL PROTECTION AND FLOOR TRANSITION PROFILES

1. Schluter Systems
2. Blanke Corporation
3. InPro Corporation

Acceptable Product(s):

1. (CG-3) Stainless Steel, Type 304, 18 gauge, exposed edges and corners; Schluter – Quadec, attach with mortar behind tile no exposed fasteners. Length: length of wall. (See Section 3 Finishes for Detail) Installed in all exposed edge ceramic tile edge conditions lieu of 3" corner guard at high traffic locations.
2. Stainless Steel, Type 304, 18 gauge, floor transitions from tile to carpet; Schluter-Reno-U, attach with mortar behind tile no exposed fasteners. Length: length of wall opening. (See Section 3 Finishes for Detail)





## Appendix

### 4.4 FLOOR MATERIAL FINISH INDEX

#### GROUT:

**Manufacturer:** Tex Rite  
**Color:** Natural Gray No. 2

#### FT-1 Floor Tile 1

**Manufacturer:** American Tile Supply  
**Collection:** Micron  
**Color:** CCI 901  
**Finish:** Matte  
**Size:** 12" x12"  
**Location:** Floor accent tile

#### FT-2 Floor Tile 2

**Manufacturer:** Dal-Tile  
**Collection:** Diamante  
**Color:** PO26 Ghiacco  
**Finish:** Matte  
**Size:** 12" x12"  
**Location:** Floor field tile

#### FT-3 Floor Tile 3

**Manufacturer:** Dal-Tile  
**Collection:** Diamante  
**Color:** PO33 Corda  
**Finish:** Matte  
**Size:** 12" x12"  
**Location:** Floor accent tile

### 4.4 WALL PANEL MATERIAL INDEX

#### WP-1 Wall Panel 1

**Manufacturer:** Marlite  
**Collection:** Modules  
**Finish:** SSM-400 Matt Aluminum  
**Size:** 2'-0" (tall) x 3'-0" (wide) max.

#### WP-2 Wall Panel 2

**Manufacturer:** Marlite  
**Collection:** Modules  
**Finish:** SSM-338 Moire Aluminum  
**Size:** 2'-0" (tall) x 3'-0" (wide) max.

#### WP-3 Wall Panel 3

**Manufacturer:** Marlite  
**Collection:** Modules  
**Finish:** SSM-364 Brushed Aluma Stainless  
**Size:** 1'-0" (tall) x varies

### 4.5 WALL MATERIAL FINISH INDEX

#### GROUT:

**Manufacturer:** MAPEI  
**Color:** Ivory 39

#### WT-1 Wall Tile 1

**Manufacturer:** American Tile Supply  
**Collection:** Micron  
**Color:** CCI 901  
**Finish:** Polished  
**Size:** 12"x12"  
**Location:** Field wall tile

#### WT-2 Wall Tile 2

**Manufacturer:** Dal-Tile  
**Collection:** Diamante  
**Color:** PO26 Ghiacco  
**Finish:** Polished  
**Size:** 12"x12"  
**Location:** Accent wall tile

#### WT-3 Wall Tile 3

**Manufacturer:** Dal-tile  
**Collection:** Diamante  
**Color:** PO33 Corda  
**Finish:** Polished  
**Size:** 12"x12"  
**Location:** Accent wall tile

#### WT-4 Wall Tile 4

**Manufacturer:** Dal-Tile  
**Collection:** Permabrite  
**Color:** 6465 Gloss Almond  
**Finish:** Polished  
**Size:** 2" x 2"  
**Location:** Accent wall tile in restroom entry and lavatory

#### WT-5 Base Wall Tile 5

**Manufacturer:** Dal-Tile  
**Collection:** Diamante  
**Color:** PO26 Ghiacco  
**Finish:** Polished  
**Size:** 6"x6"  
**Location:** Accent wall tile at curved entry walls

#### WT-6 Base Wall Tile 6

**Manufacturer:** Dal-Tile  
**Collection:** Diamante  
**Color:** PO26 Ghiacco  
**Finish:** Polished  
**Size:** 6"x12"  
**Location:** Base wall tile

#### WC-1 Wall Carpet

**Manufacturer:** Tretford  
**Style:** Heavy contract cord carpet  
**Color:** 527 Dried Lavender  
**Height:** Wainscot to extend 6' AFF  
**Location:** Transition Area: Wall covering when entering the Toilet Room





## Appendix

### 4.6 CEILING FINISH MATERIAL INDEX

#### CT-1 Ceiling Tile Type 1

**Manufacturer:** Armstrong World Industries  
**Collection:** Armatuff  
**Color:** White  
**Finish:** Medium Texture  
**Edge:** Square  
**Size:** 2'x2'  
**Location:** Janitor's Room

#### CT-2 Ceiling Tile Type 2

**Manufacturer:** Armstrong World Industries  
**Collection:** Fine Fissured  
**Color:** White  
**Finish:** Medium Texture  
**Edge:** Tegalur  
**Size:** 2'x2'  
**Location:** Assistance Room, Men's Room and Women's Room

### 4.7 LAVATORY FINISHES

#### COUNTERTOP:

**Manufacturer:** Solid surface by Silestone  
**Color:** Rasa Grey #1201; 3/4" thick with square edge

#### BASE CABINET:

**Manufacturer:** Plastic Laminate by Wilsonart  
**Color:** Graphite Nebula, 4623-60 Matte Finish.

### 4.8 PAINT FINISHES

#### PT-1 Paint Type 1

**Manufacturer:** Sherwin Williams  
**Color:** Zurich White Satin - #SW7626  
**Finish:** Flat – Premium Interior Finish  
**Location:** Ceilings, Soffits, Bulkheads, Janitors Closets, and non-public rooms

#### PT-2 Paint Type 2

**Manufacturer:** Color Tex  
**Color:** # 13 Gray  
**Finish:** Poly-shield Plus Coating  
**Location:** Interior Walls with public access

#### PT-3 Paint Type 3

**Manufacturer:** Color Tex  
**Color:** PS50804  
**Location:** Existing Concrete Columns

### 4.9 DOOR HARDWARE

**Manufacturer:** Schlage  
**Color/Finish:** #626 Satin Chromium Plated  
**Product Number:** SCH ND97BDRHO 626  
**Location:** Assistance Room

### 4.10 PLUMBING FIXTURES AND SPECIFICATIONS

Fixtures except for specific specialty items shall be the fixtures listed or an Approved Equal, manufactured by American Standard, Kohler or an Approved Equal. All Potable water components must be listed with NSF/ANSI – 61.

1. Water Closets (WC-1): American Standard 2257.103 Aflow water-saver white vitreous china, wall mounted, elongated siphon jet, 1-1/2" top spud bowl trimmed with Church Model 9500SSC white open front seat less cover, with check hinge and stainless steel posts. Sloan Royal Optima 152-1.28 WB ES-S chrome plated quiet flush valve with screwdriver stop, vacuum breaker and flush connection. Closets to be supported by Josam, Wade, Zurn or Smith cast iron chair carrier with lugs for floor and wall attachment and appropriate closet fitting as job requires.
2. Water Closets (WC-1H): Same as WC-1 except mount toilet bowl at handicapped height as required by the latest edition of Texas Accessibility Standards and Americans with Disabilities Act. Mounting height for flush valve shall be as required by the latest edition of Texas Accessibility Standards and Americans with Disabilities Act. Handle position to be on clear space side of water closet.
3. Urinals (U-1): American Standard 6515.005 "Washbrook" white vitreous china wall mounted 3/4" top spud siphon jet urinal with flushing rim or an Approved Equal by Eljer or Kohler. Sloan Royal Optima 195-0.5 WB ES-S chrome plated quiet flush valve with screwdriver stop, vacuum breaker and flush connection. Urinals to be supported on Josam, Wade, Zurn or Smith, cast iron chair carrier with adjustable cast iron and steel frame, tubular legs, hanger and bearing plate lids for floor and wall attachment, threaded fixture studs with nuts and washers.
4. Urinal (U-1H): Same as (U-1) except mounting height shall be as required by the latest edition of Texas Accessibility Standards and Americans with Disabilities Act. Handle position to be on clear on side of urinal.



## Appendix

5. Lavatory (L-1): American Standard 0496.221 Ovalyn 19" oval under counter mounted white vitreous china countertop lavatory, trimmed with grid strainer drain and Sloan Optima ETF-600 automatic faucet or an Approved Equal by Eljer or Kohler, chrome plated 17 gauge brass adjustable P-trap with clean-out plug and arm with escutcheon, loose key stops, rigid supplies, and offset supply pipes. Lavatory P-trap and angle valve assemblies shall be insulated with fully molded, "Truebro", HandiLav-Guard insulation kit, with 3-piece interlocking trap assembly and 2-piece interlocking angle valve assemblies or an Approved Equal. Fasteners shall be nylon-type supplied with kit.
6. Service Sink (SS-1): American Standard wall mounted sinks shall be white enameled cast iron, twenty (20) inches by twenty two (22) inches, blank back with wall hanger supports. Faucet shall be "Kohler" brand or equivalent wall-mounted rough plated faucet with valve units, vacuum breaker, wall brace, and threaded spout with pail hook. Trap shall be adjustable standard for three (3) inch pipe connection with cleanout plug and strainer, enameled inside.
7. Mop Sinks (MS): Precast terrazzo, engineered stone, or stainless steel floor mount mop sink, Model TSBC-6011, pearl gray, 12" high walls, stainless steel drain body, 3" combination dome strainer and lint basket, stainless steel caps on all curbs; Model 830-AA service faucet, chrome plated with vacuum breaker, adjustable wall brace, pail hook, 3/4" hose thread on spout, 8" centers; Model 832-AA hose and bracket, 30" x 5/8" HD hose, 18 gage 302 stainless steel bracket; Model 889-CC mop hanger, 24" x 3" stainless steel for three mops minimum; as manufactured by Fiat, Acorn Engineering or an Approved Equal.
8. Electric Water Cooler (EWC):
  - a. Fountain Model M8CR as manufactured by Oasis or an Approved Equal by Elkay, Sunroc, Haws or Halsey Taylor: Recessed electric water cooler, barrier free, two level wheelchair accessible with stainless steel top, vinyl on steel body, elevated anti-squirt bubbler with stream guard, automatic stream regulator, mounting bracket, refrigerated with integral air cooled condenser; capacity of 8.0 gal/hr of 50 degree F, 1/5 HP compressor.
9. Floor Drains:
  - a. Floor Drain (FD-1): Galvanized cast iron two piece body with double drainage flange, weep holes, reversible clamping collar and round, adjustable nickel-bronze strainer and trap primer connection; Figure 30000-A as manufactured by Josam or an Approved Equal by Smith, Wade or Zurn.
  - b. Floor Drain (FD-2): Same as FD-1 except without trap primer connection for use in shower areas.
  - c. Floor Drain (FD-3): Galvanized cast iron medium deep two-piece body with double drainage flange, non-puncturing flashing clamp collar, weepholes, bottom outlet, trap primer connection, round top and removable medium-deep sediment bucket which supports a medium-duty anti-tilting secured cast iron grate with perimeter drainage slots, Figure 32320 as manufactured by Josam or an Approved Equal by Smith, Wade or Zurn.
  - d. Floor Drain (FD-4): Galvanized cast iron two-piece body with double drainage flange, non-puncturing flashing clamp collar, weepholes, bottom outlet, round top and removable shallow sediment bucket which supports a medium-duty anti-tilting secured cast iron grate with perimeter drainage slots, Figure 32120 as manufactured by Josam or an Approved Equal by Smith, Wade or Zurn.
  - e. Hub Drain (HD): Cast soil pipe increaser fitting, service weight. Hub to be one size larger than spigot end. Conform to the requirements of ASTM A-74. Where required by local authorities, provide cast iron air gap, Josam Series 88900 or an Approved Equal by Smith, Wade or Zurn.
10. Additional plumbing requirements are as follows:
  - a. Floor Cleanouts for Interior Finished Floor Areas: Coated cast iron body, internal gasketed ABS cleanout plug with adjustable ABS housing; round with scoriated cover Figure 56000 in service and maintenance areas; square with



## Appendix

Nikaloy foot traffic cover Figure 56020 compatible with floor finish in finished floor areas or carpet clean-out cover where required; clean-outs shall be as manufactured by Josam or an Approved Equal by Smith, Wade or Zurn.

- b. Wall Cleanouts: Square cast Nikaloy access frame, anchor lugs, satin smooth secured cover, coated cast iron cleanout tee with recessed bronzed tapped plug, Josam Figure 58740 or an Approved Equal by Smith, Wade or Zurn.
- c. Cleanouts for Exterior Surfaced Areas: Coated cast iron, internal gasketed ABS cleanout plug and adjustable ABS housing with scoriated secured round satin Nikaloy top, Josam Figure 56000 or an Approved Equal by Smith, Wade or Zurn.
- d. Cleanouts for Interior Unfinished Accessible Areas: Cast iron tee with threaded plug. Provide bolted stack clean-outs on vertical rainwater leaders.
- e. Water Hammer Arrestor: Unit shall include a stainless steel shell, hydro-pneumatic cushion of inert gas and bellows to absorb shock, Josam 75000 Series or an Approved Equal.
- f. Plumbing fixtures and equipment shall be furnished and installed complete with trim and all other equipment required to connect with rough-in piping at floor and wall, unless specified otherwise.
- g. Chair carriers shall be furnished with all wall mounted fixtures.
- h. NO PVC PLUMBING PIPING PERMITTED PER DFW CODE AMENDMENT/ DESIGN CRITERIA. CAST IRON PLUMBING ONLY PERMITTED IN ABOVE FLOOR APPLICATIONS.

