

**Appendix 34**  
**Training Toolkit**

- **Colorado Springs Airport (COS) Sample Training Materials**
- **Sacramento International Airport (SMF) Example Employee Training Presentation**
- **Sacramento International Airport (SMF) Example Concessionaire Training Presentation**



# *Environmental Procedures Training*



# Solid Waste Management

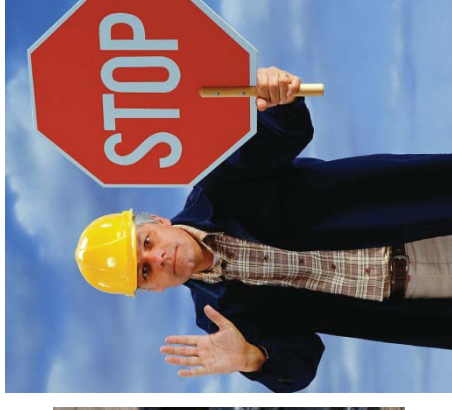
- Proper waste management
- May come across items that require special disposal and cannot be tossed in the trash



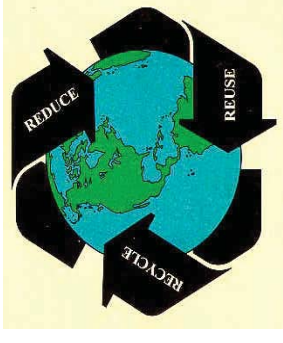
# Solid Waste or Special Waste?

- Special waste may be hazardous or non-hazardous and requires special disposal
  - Vendor pickup
    - Universal waste
    - Sand/grease trap waste
    - Oil/water separator waste
- **Profiled and taken to landfill (coordination required) – contact Kris**

- Please make sure to forward all waste manifests



# What's Recyclable?



## Recyclable

- Glass
- Plastic
- Aluminum
- Tin
- Cardboard
- Office Paper including coated paper
- Magazines/books
- Junk mail
- Envelopes
- Brochures
- Manuals with glue bindings
- File folders

## Trash These

- Plastic bags
- Styrofoam
- Candy wrappers
- Used paper products – paper plates, cups, paper towels, etc.
- Wax paper
- Food waste



# Waste Management Facts

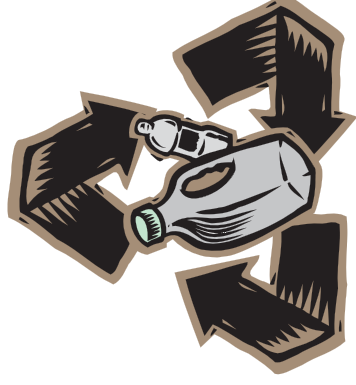
- In a lifetime the average American will throw away 600 times the amount of his or her adult weight in garbage. For example, a 150 pound adult will leave a trash legacy of 90,000 pounds.



Source: <https://www.wm.com/location/california/sacramento-valley/winters/facts/index.jsp>

# Recycling Fact

- A recycled soda bottle can be made into a detergent bottle, egg carton, paint brush, etc., but cannot be remade into another soda bottle.
- Only about 1% of all plastics are currently recycled



# Waste Disposal Fact

- North Americans throw away 2.5 million plastic bottles every hour





# REVIEW – Trivia 3

- How many plastic bottles are thrown in the trash each day?

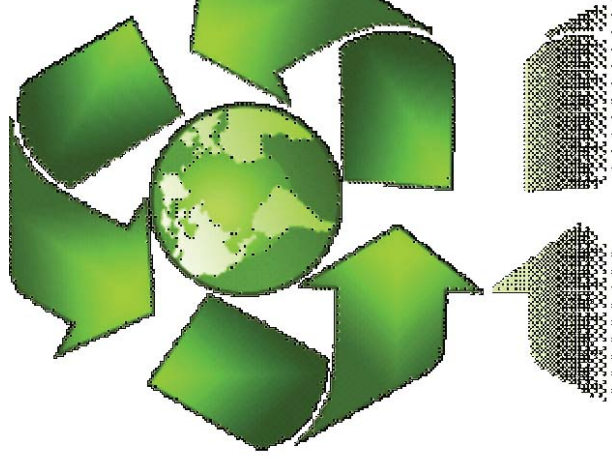
- A. 250,000
- B. 500,000
- C. 5 million
- D. 10 million
- E. **60 million**



“What really annoys me are all the empty Evian bottles.”

# Quiz – Question 14

- **What item cannot be placed in the recycling roll off containers on the east or west compactor areas?**
  - A. Tin cans
  - B. Plastic bags
  - C. Colored paper
  - D. Cardboard
  - E. All of the items are acceptable

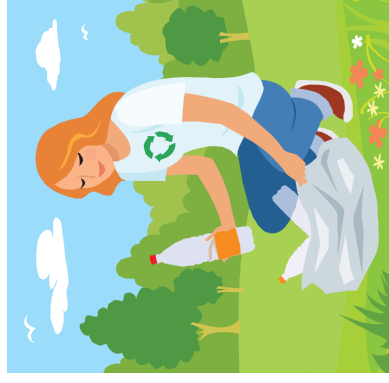


*Trivia: The average American office worker goes through around 500 disposable cups every year.*

# REVIEW – Question 14

- What item cannot be placed in the recycling roll off containers on the east or west compactor areas?

- A. Tin cans
- B. Plastic bags**
- C. Colored paper
- D. Cardboard
- E. All of the items are acceptable



# SMF Recycling Training

County Department of  
Airports:

Bree Taylor  
Tiffany Pham





## Why Recycle?

It's the LAW!

- ▶ AB 341 (Chesbro, 2011) – large venue (e.g. airports) with more than 4 cubic yards must have recycling program
- ▶ AB 1826 (organics recycling, 2016) – entities with 8 cubic yards or more must have organics recycling



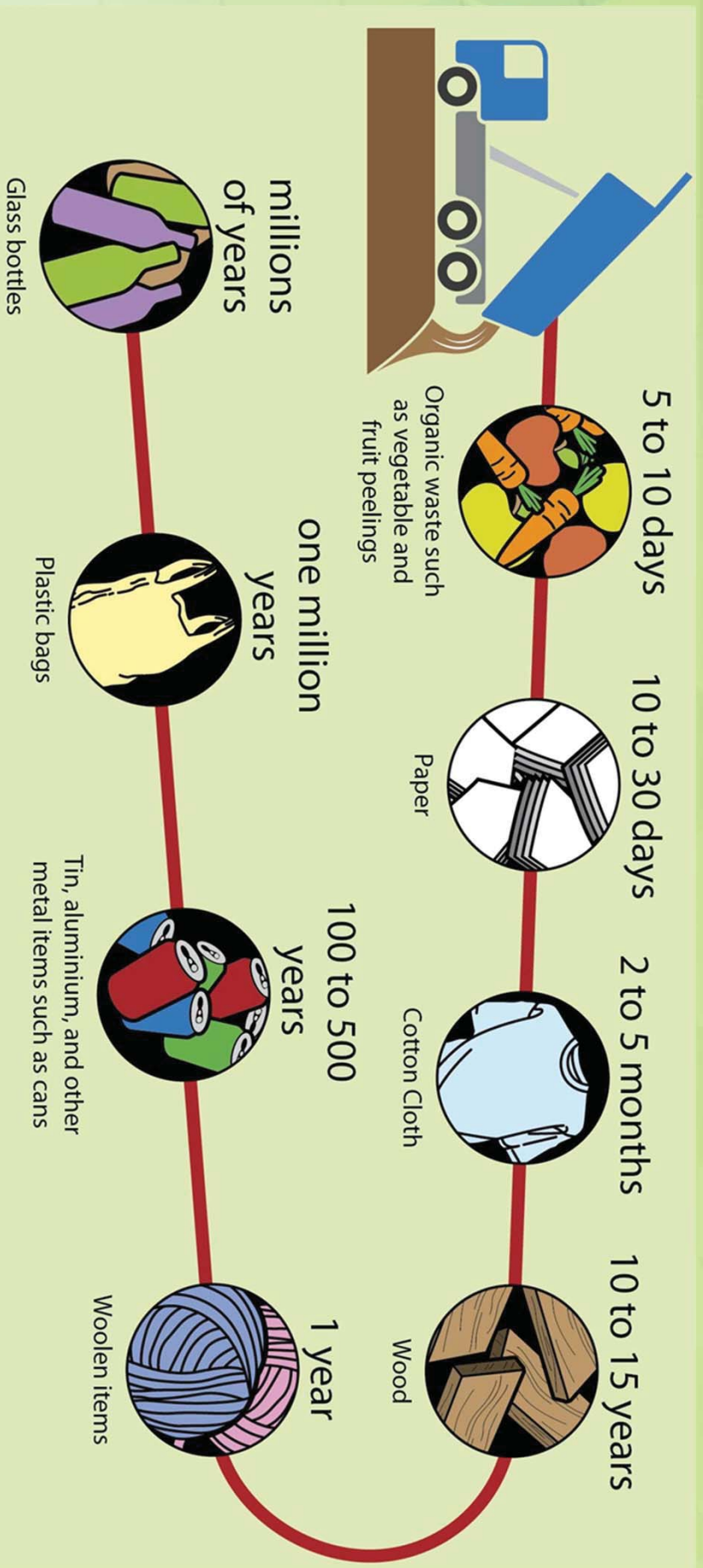
# Yolo County Landfill



Methane gas



# How long does it take to break down in the landfill?





**Place material in grey bin**



**Custodial/P/RIIDE takes material to compactor, where it is ready for shipment to the Yolo County Landfill**



**Trash is thrown into the landfill. The amount of time it takes to break down depends on the material. Plastic, glass, and aluminum take 100+ years to degrade.**







The recycled material is used for various products and resold in stores.



Place recyclable material in blue bin



Custodial/PRIDE takes recyclable material to compactor, where it is ready for shipment to the Material Recovery Facility



Material is pelletized, sanitized, and processed. The ground up material is made into new products and containers.



Sorted material is compacted and prepared for shipment to the proper processing facility



Waste is sorted based on material at MRF. Unacceptable waste is sent to the landfill.

1. Reduce
2. Reuse
3. Recycle

buy only what  
you need -  
need what you  
buy!

**REDUCE**  
THE AMOUNT OF  
MATERIALS  
YOU USE, WHICH



**REDUCES**  
THE AMOUNT  
OF WASTE  
YOU CREATE.

**REUSE**  
MATERIALS  
WHEN POSSIBLE.



**RECYCLE**  
WHENEVER  
POSSIBLE.



**RETHINK**  
THE MATERIALS

YOU  
USE

AND  
THOSE

YOU  
THROW  
AWAY

# 3 types of waste disposal at SMF

- ✓ recyclables – blue bin,
- ✓ landfill (trash) – gray/black bin,
- ✓ food waste- yellow bin





Plastic Containers #1-7



Soda Bottles



Glass Bottles



Aluminum, Steel and Tin Cans

Printed on recycled paper

Recyclables



Office Paper



Cardboard



Newspaper



RECYCLE



# Plastics 1-7



PETE

HDPE

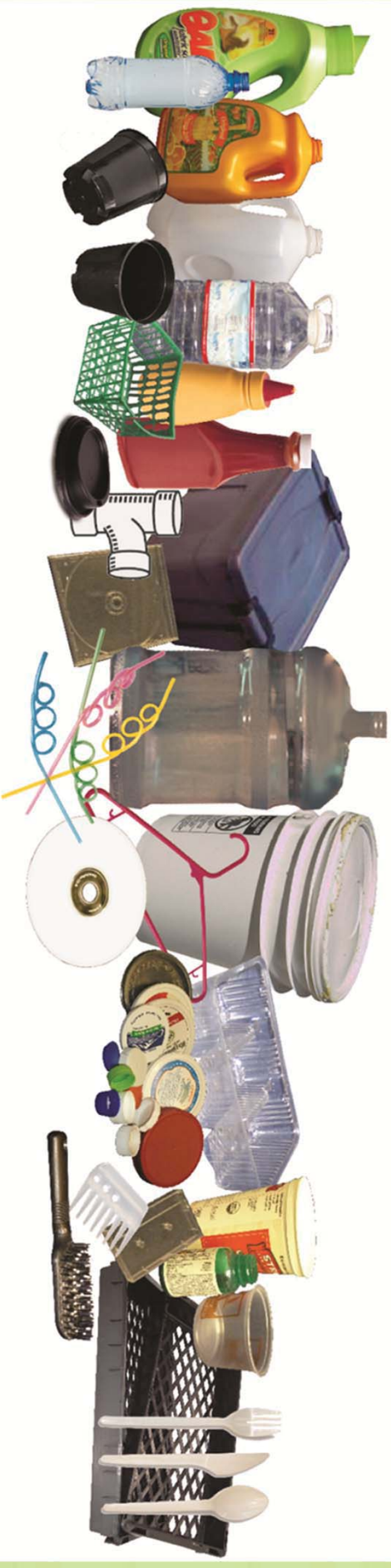
V

LDPE

PP

PS

Other





# Concessions Recycling Training

County Department of Airports:

Bree Taylor, Tiffany Pham, Adam Little





## Why RECYCLE?

It's the LAW!

- 🗑️ AB 341 (Chesbro, 2011) – large venue (e.g. airports) with more than 4 cubic yards must have recycling program
- 🗑️ AB 1826 (organics recycling, 2016) – entities with 8 cubic yards or more must have organics recycling



# Venues & Stadiums

(arenas, stadiums, convention centers)



Raley Field,  
City of West  
Sacramento





# Why RECYCLE?



Landfills cause:

- Air pollution
- Soil & water contamination

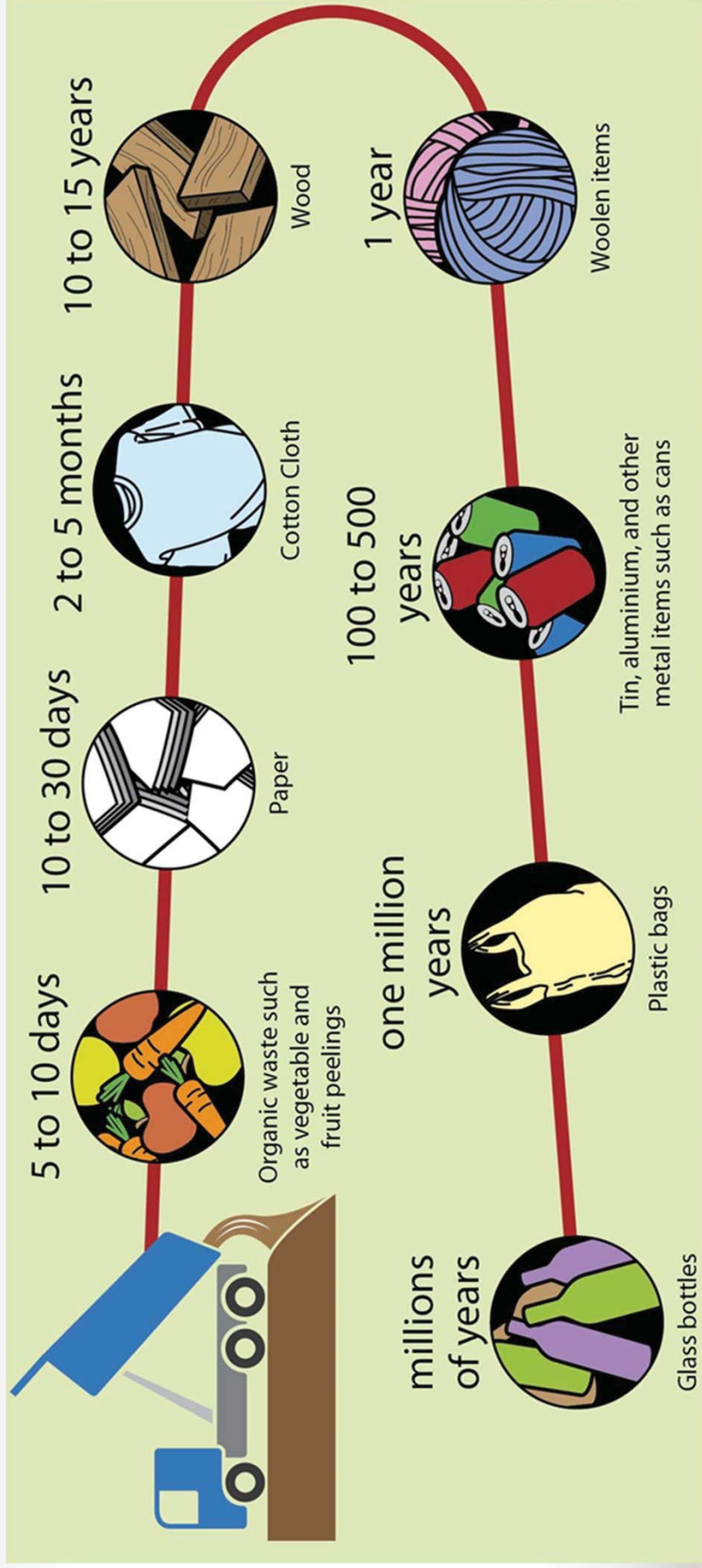
1 new landfill every year  
without recycling!

Yolo County Landfill

Methane gas



# How long does it take to break down in the landfill?



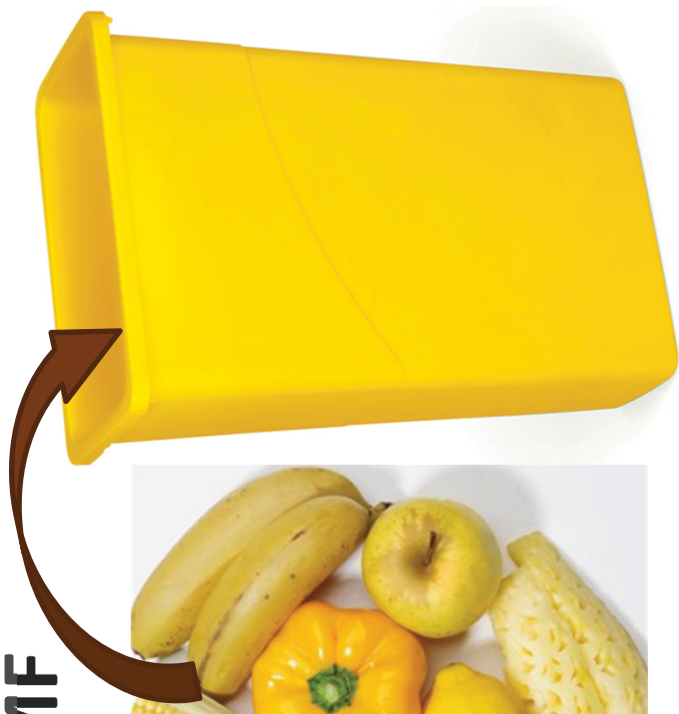
# How to keep waste out of the landfill?

1. Reduce
2. Reuse
3. Recycle





## 3 types of waste at SMF



✓ food waste  
- yellow

✓ recyclables  
- blue

✓ landfill (trash) -  
gray



Remember: Bag your waste properly!



# What **CAN** go into Food Waste?

What <b>CAN</b> be digested:			
Liquids	Yellow & brown grease	Cooking oil	
			
Meat	Plate Scrapings	Bones	
			
Dairy Products	Baked Goods	Kitchen Trimmings	



# What **CANNOT** go into Food Waste?

- Plastic
- Aluminum
- Glass
- Receipts
- Plastic-lined cartons, cups, etc



# What happens to the food when it leaves SMF?





What to  
put in the  
blue bin?

**Recyclables**

**Plastic Containers #1-7**

**Soda Bottles**

**Glass Bottles**

**Aluminum, Steel and Tin Cans**

**Office Paper**

**Cardboard**

**Newspaper**

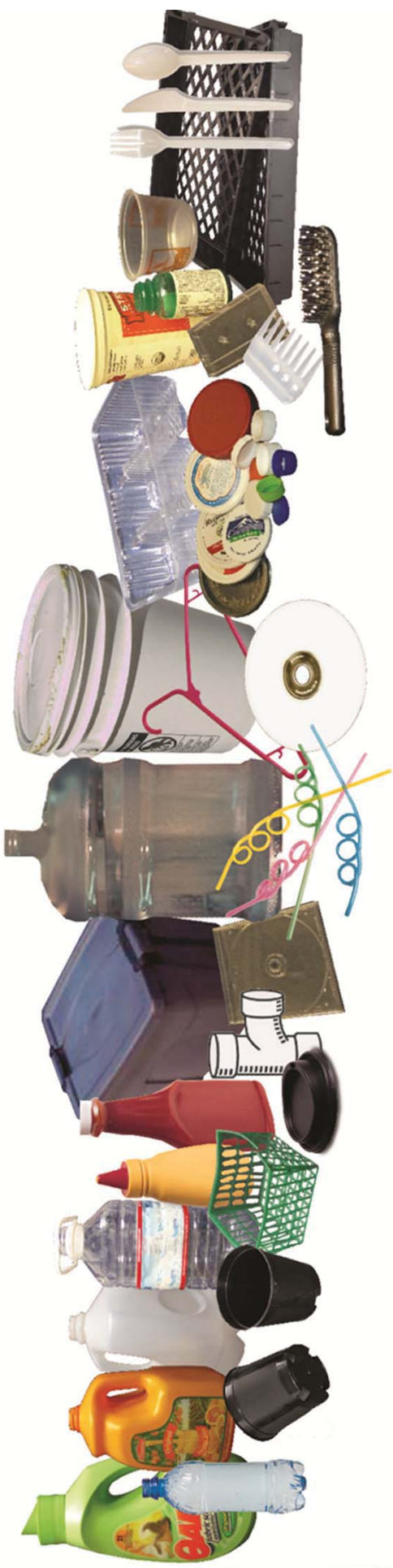
**RECYCLE**

1 PETE HDPE PVC  
2 3  
4 LOVE TP OTHER  
5 6 7

Printed on recycled paper

# What to put in the blue bin?

## Plastics 1-7

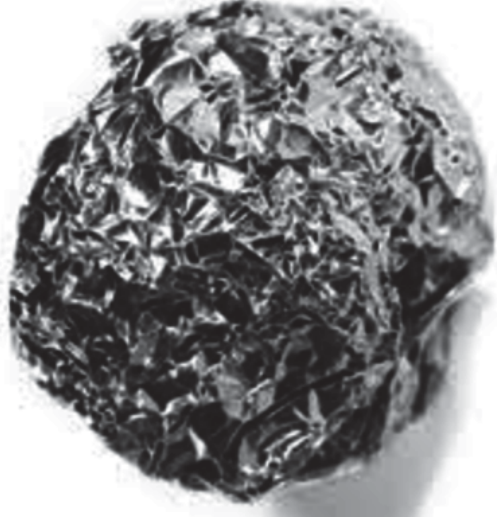


# What DOES go into the landfill?

- Receipts
- Plastic wrappers
- Aluminum foil
- Paper cups (soda and coffee cups)
- Gloves



# Where do these items go?



What is wrong with this photo?



What is wrong with this photo?

