

## Responsibilities of Membership

TRB standing committees play a vital role in facilitating the exchange of transportation research information and results. The committee members work together to develop research problem statements in their area of interest, review and recommend papers for publication and for presentation at TRB Annual Meetings, and organize Annual Meeting sessions as well as committee meetings, workshops, and other activities. Committees are made up of individuals who hold a variety of opinions on issues of concern to the profession. It is important to keep in mind that TRB standing committees and their members are **not** authorized to speak on behalf of TRB or to provide advice to government agencies or other organizations. Members must therefore exercise caution to avoid creating the impression that the committee or any of its members represents TRB or can commit TRB to a course of action.

For more information on TRB and its committees, and on the National Academies, please visit:

[www.TRB.org](http://www.TRB.org)  
[www.nationalacademies.org](http://www.nationalacademies.org)

## What Does Membership Mean?

Membership on a TRB standing committee is a high honor. As a member, you have been recognized as an expert in your field, someone who can contribute a valuable perspective on current issues facing the profession. Diversity of views and backgrounds is an important factor in determining committee membership, and your participation is critical to ensuring that a variety of perspectives are represented around the table. Participation offers members excellent opportunities to network with their peers and assists them in staying current with the latest developments in their field. As an added bonus, members are eligible for a reduced fee at the TRB Annual Meeting held in Washington, D.C., every January and for a discount on most TRB publications. Each member of a standing committee is nominated for a 3-year term and potentially may serve on that committee for up to 3 consecutive terms.

# WELCOME!

**On behalf of the National Academies' Transportation Research Board (TRB), welcome to membership on a TRB standing committee. Your expertise and perspective are very valuable and we appreciate your willingness to serve as a member for the 3-year appointment term.**

## Who are Young & Emeritus Members?

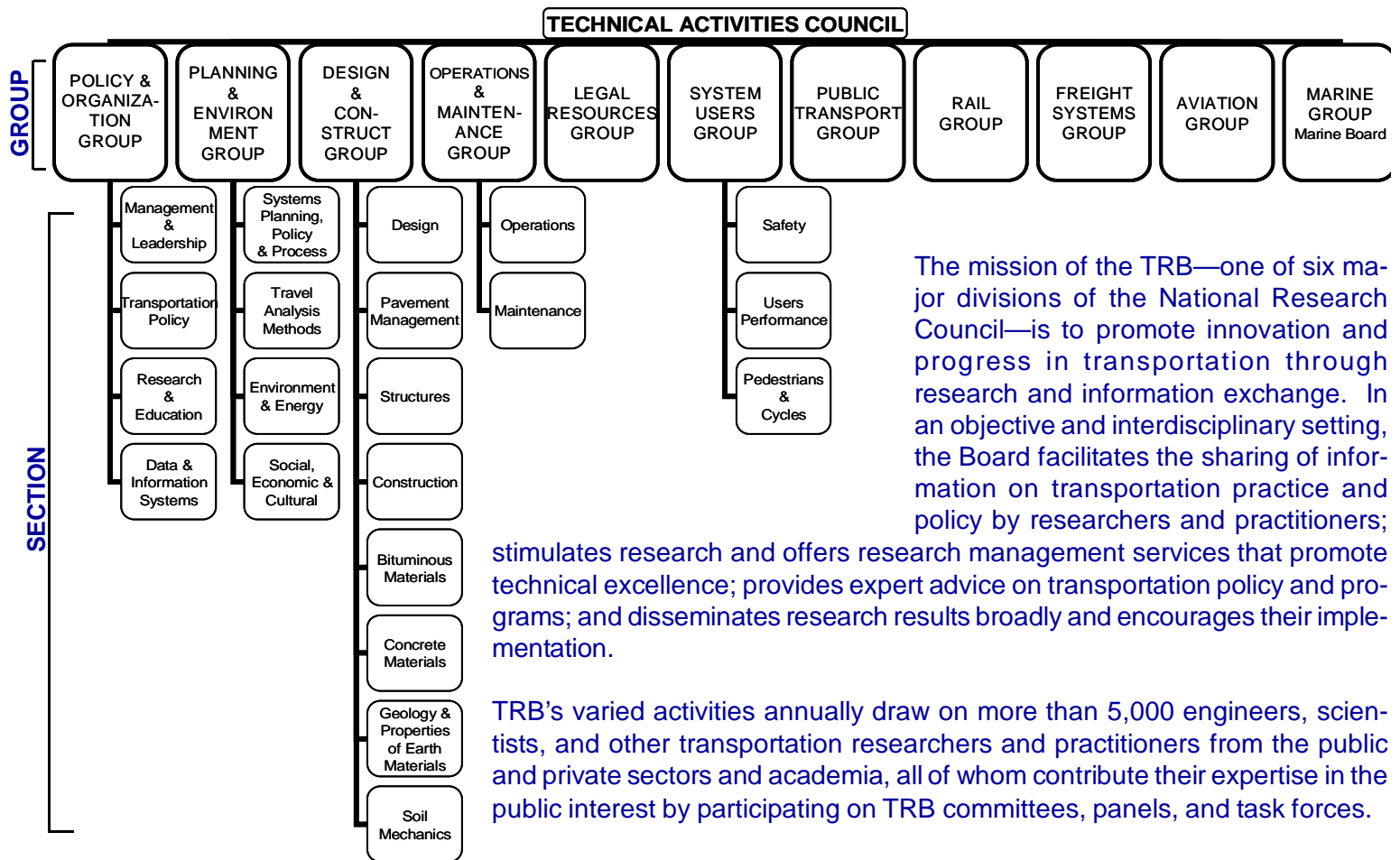
Membership on each standing committee is limited to 25 individuals. In addition, 5 International Members and 2 Young Members may be appointed to foster participation outside of the United States and to engage succeeding generations of transportation professionals. Young members are individuals aged 35 years or younger who wish to contribute their expertise in a given area and to progress in their chosen careers by participating on a TRB committee. Emeritus Members have had a long history of standing committee service and have been nominated by their peers for their exceptional service to transportation and to TRB.

## Who are Friends of a Committee?

Becoming a Friend of a Committee affords an opportunity to get involved in a committee's activities and, by participating over time, to be considered for future nomination for membership on that committee. Friends enjoy networking opportunities with other experts in their field and are free to become actively engaged in the work of the committee. They are not eligible for member discounts.



TRANSPORTATION RESEARCH BOARD  
OF THE NATIONAL ACADEMIES



The mission of the TRB—one of six major divisions of the National Research Council—is to promote innovation and progress in transportation through research and information exchange. In an objective and interdisciplinary setting, the Board facilitates the sharing of information on transportation practice and policy by researchers and practitioners;

stimulates research and offers research management services that promote technical excellence; provides expert advice on transportation policy and programs; and disseminates research results broadly and encourages their implementation.

TRB's varied activities annually draw on more than 5,000 engineers, scientists, and other transportation researchers and practitioners from the public and private sectors and academia, all of whom contribute their expertise in the public interest by participating on TRB committees, panels, and task forces.

The **Technical Activities Division** is responsible for standing committee and task force activities, annual meeting, conferences, workshops, seminars, response to inquiries, publications, and Field Visit Program.

The **Studies and Special Programs Division** conducts policy studies at the request of the U.S. Congress, executive branch agencies, states, and others; operates a bibliographic database of completed and ongoing research and provides library reference services; produces syntheses of current practices in highway, transit, airport and commercial truck and bus operations; and manages Innovations Deserving Exploratory Analysis (IDEA) programs in rail, truck, highway, and transit operations.

The **Cooperative Research Programs Division** administers the National Cooperative Highway Research Program (NCHRP), the Transit Cooperative Research Program (TCRP), the Airport Cooperative Research Program (ACRP), the National Cooperative Freight Research Program (NCFRP), and the Commercial Truck and Bus Safety Synthesis Program (CTBSSP).

The **Strategic Highway Research Program II** (SHRP II) is a targeted, short-term, results-oriented program of strategic highway research designed to advance highway performance and safety for U.S. highway users.

The **Marine Board** provides a forum for the exchange of information relating to maritime transportation and related economic, environmental, and technology issues in a broader context.

### TRB in the National Academies

The National Academies perform an unparalleled public service by bringing together committees of experts in all areas of scientific and technological endeavor. These experts serve pro bono to address critical national issues and give advice to the federal government and the public. Four organizations comprise the Academies: the **National Academy of Sciences**, the **National Academy of Engineering**, the **Institute of Medicine**, and the **National Research Council**. The National Academy of Sciences (NAS) is an honorific society of distinguished scholars engaged in scientific and engineering research, dedicated to the furtherance of science and technology and to their use for the general welfare. Most of the institution's science policy and technical work is conducted by its operating arm, the National Research Council (NRC), created in 1916 expressly for this purpose. Established in 1920, the Transportation Research Board is the oldest continuing unit within the NRC and is supported by state transportation departments, federal agencies including the component administrations of the U.S. Department of Transportation, and other organizations and individuals interested in the development of transportation.