

Implementing Environmental Considerations in the State Long-Range Plan

Denise B. Jackson, Administrator
Statewide Transportation Planning Division

Legislation, Regulations and Guidance

Section 6001: Environmental Considerations in Planning requires certain elements and activities to be included in the development of long-range transportation plans, including:

- **Consultation with resource agencies**
- **Discussion of potential environmental mitigation activities**
- **Participation plans that identify a process for stakeholder involvement**
- **Visualization of proposed transportation strategies where practicable**

Process

- Began developing the long-range plan in June 2005, prior to SAFETEA-LU passage
- Policy Based Plan
- 17 Supporting Technical Reports
- Consultation Process:
 - Based on a Public Involvement Plan
 - Extensive
 - Integrated



Process Cont'd

Consultation Out Reached included:

- Government-to-Government with Native American Tribes
- Federal and State Resource Agencies
- Michigan Environmental Council
- Environmental Groups



Process Cont'd



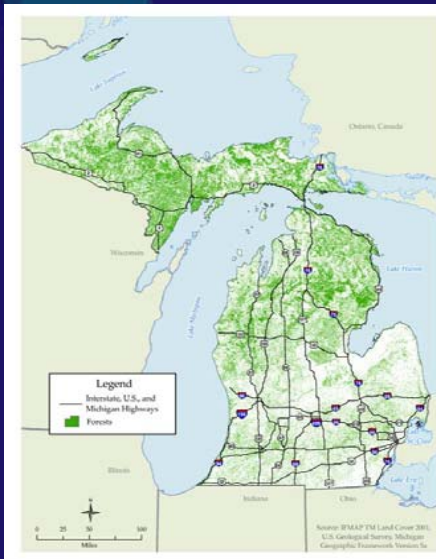
➤ Technical Reports

- Environmental Report
- Environmental Mitigation Report



Tools

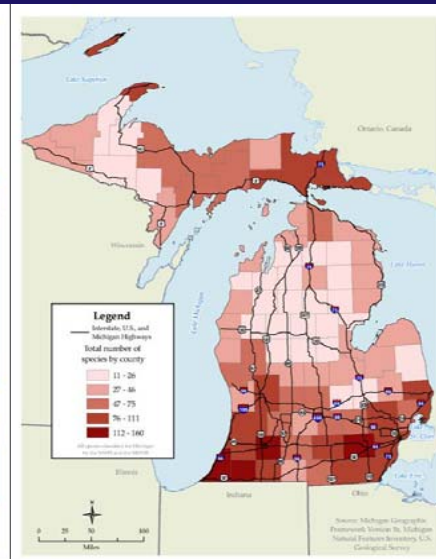
- Geographic Information Systems – GIS
- Travel Demand Models - statewide, urban and small city



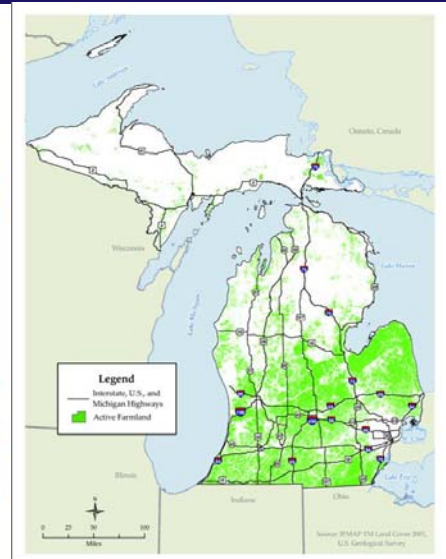
Forests



Rivers and Lakes



Threatened and Endangered Species and Species of Special Concern



Farmland

Examples of coverage available

Challenges

- **Consultation with Resource Agencies**
 - **Staff shortage**
 - **Project orientation**
 - **Lack of regional planning**

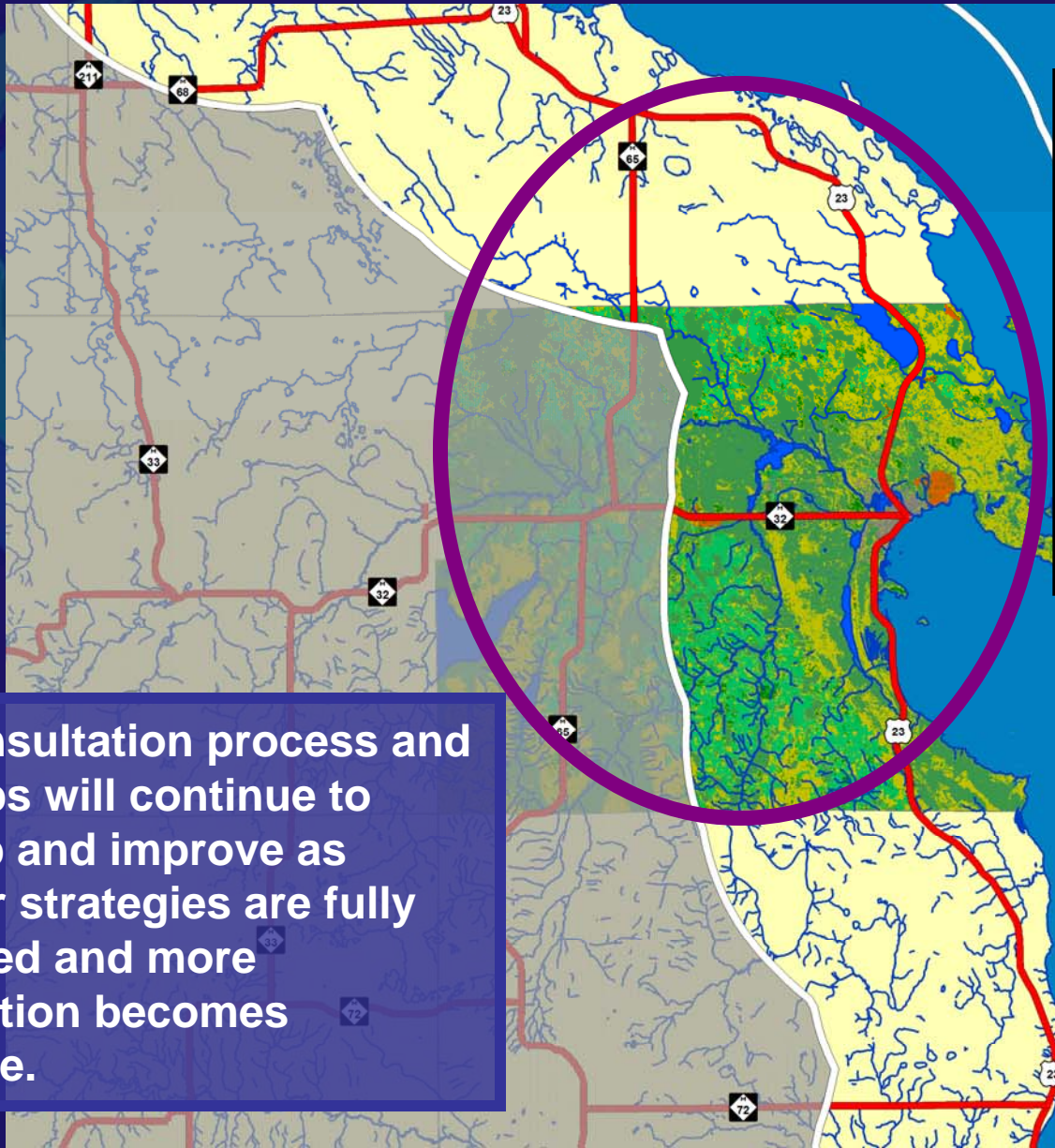


Challenges



- **GIS data problems**
 - **Little standardization**
 - **Missing and old data**
 - **Paper only data**

Next Steps



Land Cover Type	Sq Miles	Percent
Barren	3.28	0.77%
Developed	7.05	1.64%
Herbaceous Planted/Cultivated	61.37	14.30%
Herbaceous Upland	13.71	3.19%
Vegetated	104.76	24.42%
Water	11.99	2.80%
Wetlands	226.88	52.88%
	429.05	100.00%

The consultation process and the maps will continue to develop and improve as corridor strategies are fully evaluated and more information becomes available.

Map layers

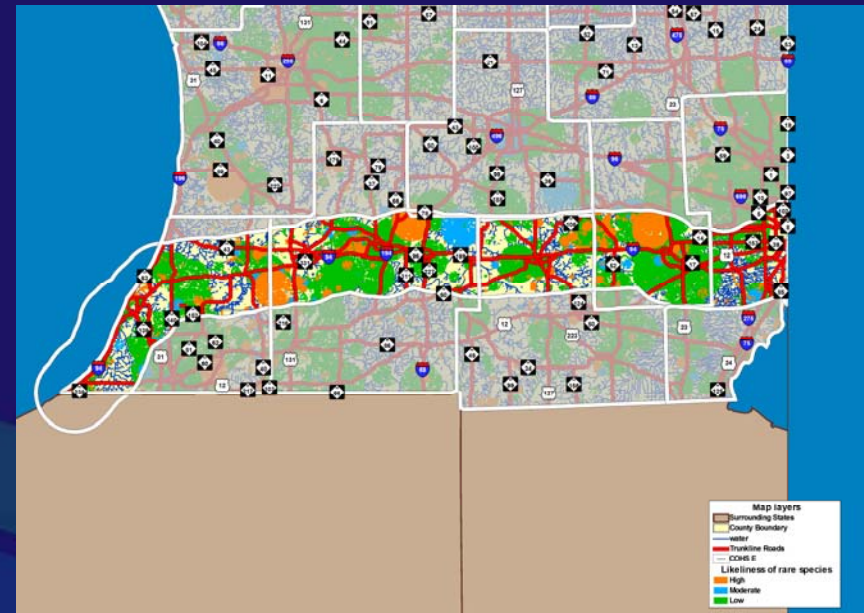
- County Boundary
- Alpena_nlcd_1992
- water
- Trunkline Roads
- 5shieldsv7
- COHS S
- S Band

Grid Desc

- Barren
- Developed
- Herbaceous Planted/Cultivated
- Herbaceous Upland
- Vegetated
- Water
- Wetlands

Getting Ready

- **Eco-Logical Workshop**
 - **Joint FHWA/MDOT effort**
 - **April, 2008**
 - **Ecosystem based approach to planning**



Workshop Action Items

- Continue to foster greater collaboration internally
- Outreach to resource agency planners
- Leverage local agency data
- Develop agreements with agencies and MPO's on environmental data

Thank You

For more information on the *MI Transportation Plan*:

Susan A. Gorski, Manager, Statewide and Urban Travel Analysis Section

gorskis@michigan.gov

(517) 335-2958

For more information on MDOT's Environmental process:

Margaret Barondess, Manager, Environmental Section

barondessm@michigan.gov

(517) 335-2621