

A world map with a light gray background. The state of Florida is highlighted in a bright cyan color. The rest of the world's landmasses are shown in a light gray color.

Community Impact Assessment

A Florida Approach

**Community Impact Assessment National Workshop
Madison, Wisconsin
August 19-21, 2002**

Historical Perspective



Task Team Established:

- ◆ **August 15, 1996**
- ◆ **Leroy Irwin, Manager**
Environmental Management Office
- ◆ **Final Report Published, May 30, 1997**



Purpose:
**To review how FDOT
considers in all phases**

- ◆ **socioeconomic**
- ◆ **public involvement**
- ◆ **relocation**
- ◆ **community impact**
- ◆ **civil rights issues (E.J.)**

**To make recommendations for
improving and enhancing
programs, processes, procedures
and practices, if needed.**





Methodology

- 1. Review existing laws, rules, regulations, policy papers, guidance's, procedures, FDOT operating manual, executive orders, etc.**
- 2. Five meetings that were professionally facilitated.**
- 3. Subdivide CIA Team into four subteams with assigned readings.**

4. Provide time for subteams to meet in “Break Out Sessions”.

☞ Subteams:

- ☞ Identified explicit and implied requirements.**
- ☞ Provided an opinion of how these requirements should be interpreted from Department's perspective.**
- ☞ Provided opinion on how the Department is meeting the intent of these laws, rules, regulations, etc.**

A world map in a light blue color is the background. Three dark blue silhouettes of people are standing on the map, one in North America, one in Europe, and one in Asia. A tilted grid with numbers is overlaid on the map, positioned over the Atlantic and Indian Oceans. The numbers on the grid are 10, 20, 30, 40, 50, 60, 70, 80, 90, and 100.

5. The subteams reported their findings to the group as a whole.

6. Open Discussion.


7. Minutes were kept.



Findings of CIA Team

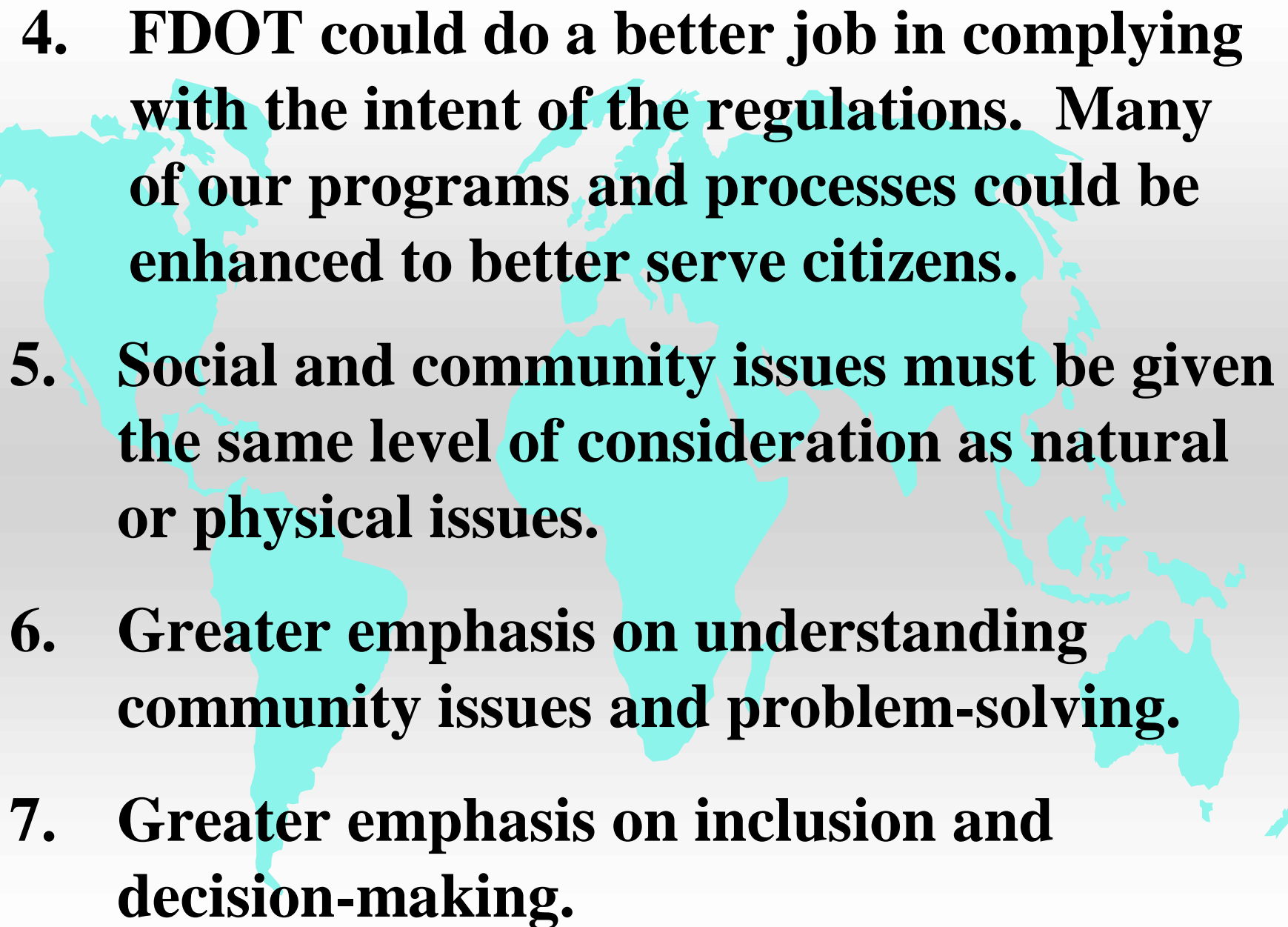
1. Nothing new being proposed by Executive Order 12898 on Environmental Justice.


☞ Existing federal regulations, guidance's and Civil Rights legislation amply cover the discriminatory and disproportionate impact concerns.



2. Other issues such as public involvement, relocation, community impact, etc., are amply covered by the regulations and guidance.

3. FDOT does a fairly good job in addressing many of these issues. This reaffirms many FDOT processes.

- 
- 4. FDOT could do a better job in complying with the intent of the regulations. Many of our programs and processes could be enhanced to better serve citizens.**
 - 5. Social and community issues must be given the same level of consideration as natural or physical issues.**
 - 6. Greater emphasis on understanding community issues and problem-solving.**
 - 7. Greater emphasis on inclusion and decision-making.**



**CIA Team:
FDOT programs and
processes to be more
effective should be more:**

- ◆ **open**
- ◆ **proactive**
- ◆ **positive (Non-bureaucratic)**
- ◆ **inclusive**

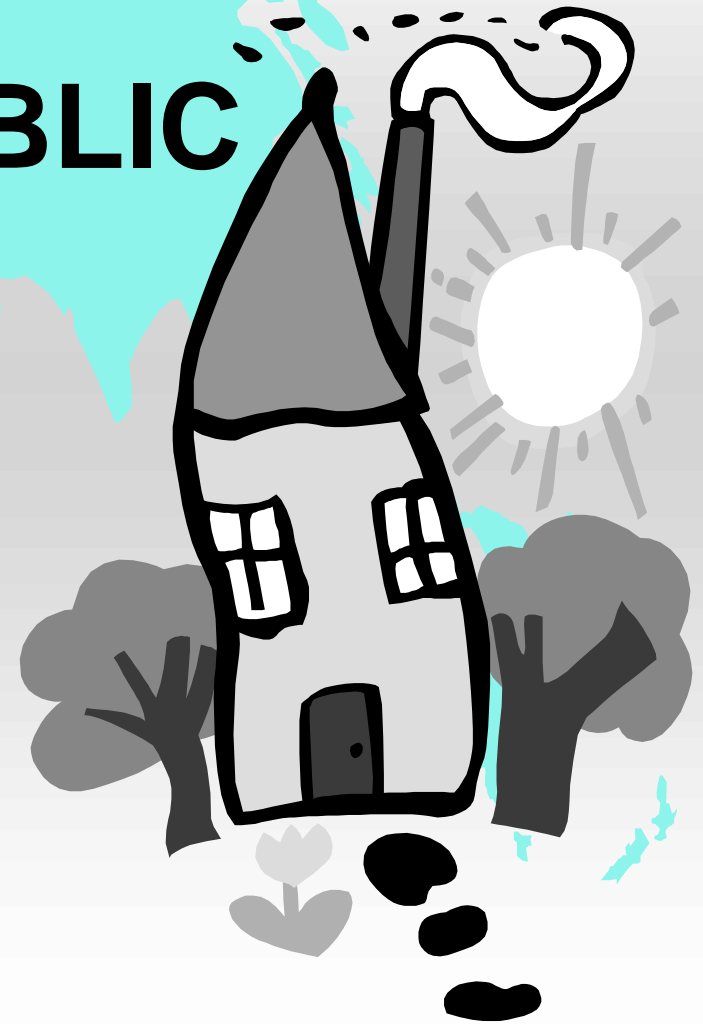
COMMUNITY IMPACT ASSESSMENT



- ◆ **Promote openness and inclusiveness in decision-making;**
- ◆ **Promote collaborative problem-solving and decision-making;**
- ◆ **Promote a comprehensive and balanced approach to problem-solving that gives full consideration in decision-making to addressing community issues; and**
- ◆ **Establish a Commitment Compliance Program for community issues.**

COMMUNITY PARTICIPATION/PUBLIC INVOLVEMENT

- ◆ Establish a public involvement program that is continuous from the MPO phase through Maintenance.



A light blue world map is centered in the background of the slide. The map shows the outlines of the continents in a light blue color against a white background.

PARTNERING/COORDINATION

- ◆ **Promote partnering with local governments and MPOs;**
- ◆ **Establish processes for better internal and external coordination in identifying and addressing community issues.**

TRAINING

- ◆ **Establish a broad curriculum of training courses, which are available to in-house personnel, involved in local government coordination, public involvement, community impact assessment and related subject areas;**
- ◆ **Establish Community Outreach Programs;**
- ◆ **Establish a Community Impact Research Program.**



CIA Links Three Critical Processes:

- ◆ **Local Government Comp Plan Process**
- ◆ **Urban Transportation Planning Process (MPO)**
- ◆ **NEPA Process (PD&E)**



Efforts Underway since 1998

- 1. FDOT Sponsored Research: CIA Methodologies (CUTR) Handbook
Transportation Research**
- 2. CIA Training Course (CUTR)**
- 3. Hired Consultant to help improve CIA Program**



What is CIA?

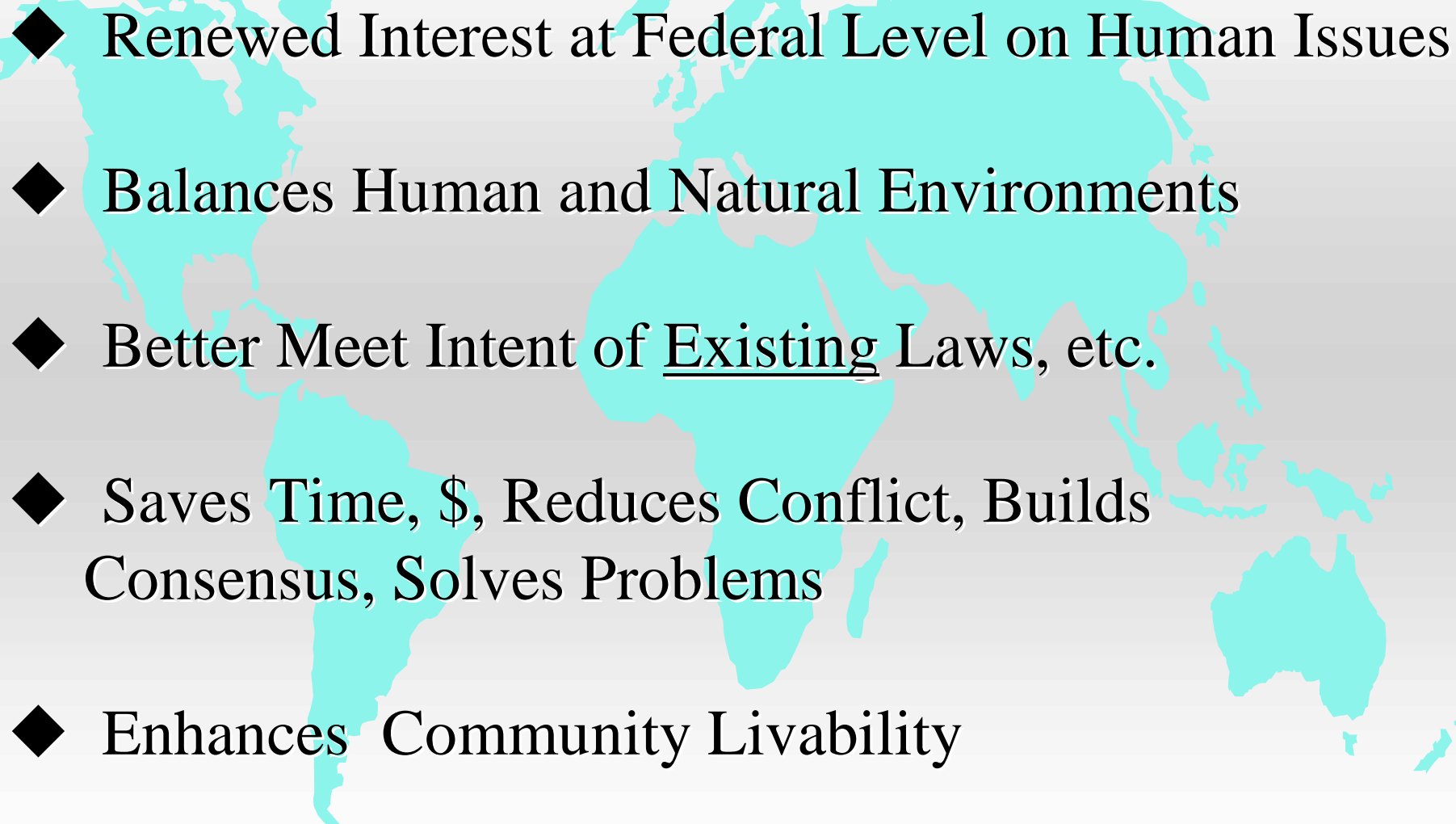
- ◆ **A process to evaluate/assess the impacts of a transportation action on a community and its quality of life.**
 - ◆ **Sociocultural effects**
 - ◆ **Mobility, Safety**
 - ◆ **Relocation**
 - ◆ **Employment Effects**
 - ◆ **Community Cohesion**

What is the Purpose of CIA



- ◆ Obtain knowledge of affected human environment
- ◆ Understanding of:
 - ◆ The relationship between the proposed project/community values
 - ◆ The impacts (good/bad)
 - ◆ Relocation
 - ◆ Relationships with individuals, social groups, neighborhoods, governments, and whole community

Why should we do CIA?

- 
- ◆ Renewed Interest at Federal Level on Human Issues
 - ◆ Balances Human and Natural Environments
 - ◆ Better Meet Intent of Existing Laws, etc.
 - ◆ Saves Time, \$, Reduces Conflict, Builds Consensus, Solves Problems
 - ◆ Enhances Community Livability
 - ◆ It's the Right Thing to Do!




Community Values

- ◆ “A set of ideals, which are openly practiced or hidden that are shared among individuals that identify themselves as a group. Community values are often expressed in written, oral, ritual, or symbolic forms to communicate these ideals to the group or others...”

Community Values (cont'd.)

- ◆ ...These values, which may evolve over time, may relate to family, education, government, economy, natural resources, religion, recreation, social class, communication networks, health and general welfare.” (FDOT, 1999)

Main Focus Areas of CIA



- ◆ Community Data/Values
- ◆ Comprehensive Approach
- ◆ Accommodation
- ◆ Facilitation
- ◆ Innovative Problem Solving
- ◆ Partnerships
- ◆ Networking
- ◆ Continuous Process
- ◆ Sociocultural issues

Main Focus Areas of CIA (cont'd.)

- ◆ Integrated Programs
- ◆ Proactive
- ◆ Collaborative Problem Solving
- ◆ Open process
- ◆ Access to information and decision making
- ◆ Inclusive process

Streamlining - TEA-21



- ◆ **CIA is a major component in FDOT's TEA-21 streamlining effort.**
- ◆ **Florida's New ETDM Process**



CIA Program Opportunities

- ◆ **Early and continuous working with communities**
- ◆ **Link three (3) planning processes/community values/decision-making/documentation**
- ◆ **Collaborative problem solving and partnering**

A world map in shades of cyan and grey serves as the background for the slide. The map is centered on the Atlantic Ocean, showing the continents of North America, South America, Europe, Africa, Asia, and Australia.

CIA Program Opportunities (continued)

- ◆ **Open decision-making process/accessibility to decision-makers**
- ◆ **Early, continuous and proactive public involvement**
- ◆ **Contribute to quality of life of community**

Where are we in Florida

A world map with a light blue background. The state of Florida is highlighted in a bright yellow color. The rest of the world is shown in a light blue/cyan color.

- ◆ **CIA Handbook**/CIA Training Course**
- ◆ **Environmental Management Office Training Curriculum***
- ◆ **Center for Urban Transportation Research Case Studies for CIA in Florida (CUTR)**

Where are we in Florida

A world map is shown in the background, with the state of Florida highlighted in a bright yellow color. The rest of the world map is in a light cyan color.

- ◆ Integration into Project Development and Environmental Manual
- ◆ Integration into MPO Operating Manual
- ◆ Integration into ETDM Process
- ◆ Integration in Plans Preparation Manual (Context Sensitive Design)
- ◆ Integration into ETDM Process

Where are we in Florida

A world map with a light blue background. The state of Florida is highlighted in a bright yellow color. The rest of the world is shown in a light blue/cyan color.

- ◆ Training Program

- ◆ PD&E Process

- ◆ Public Involvement Techniques

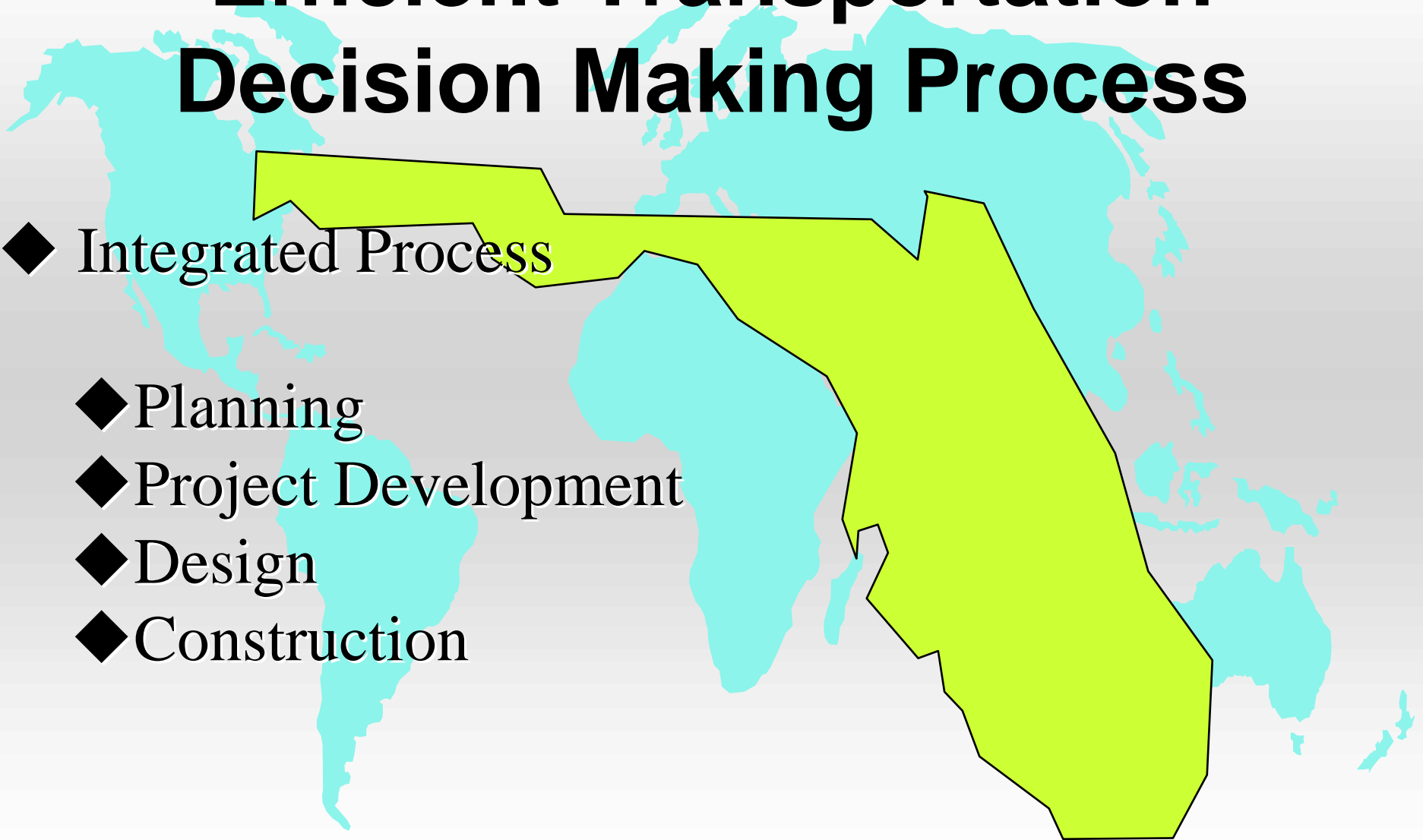
- ◆ CIA Methods

- ◆ ETDM Process

- ◆ Context Sensitive Design

Efficient Transportation Decision Making Process

- ◆ Integrated Process
- ◆ Planning
- ◆ Project Development
- ◆ Design
- ◆ Construction



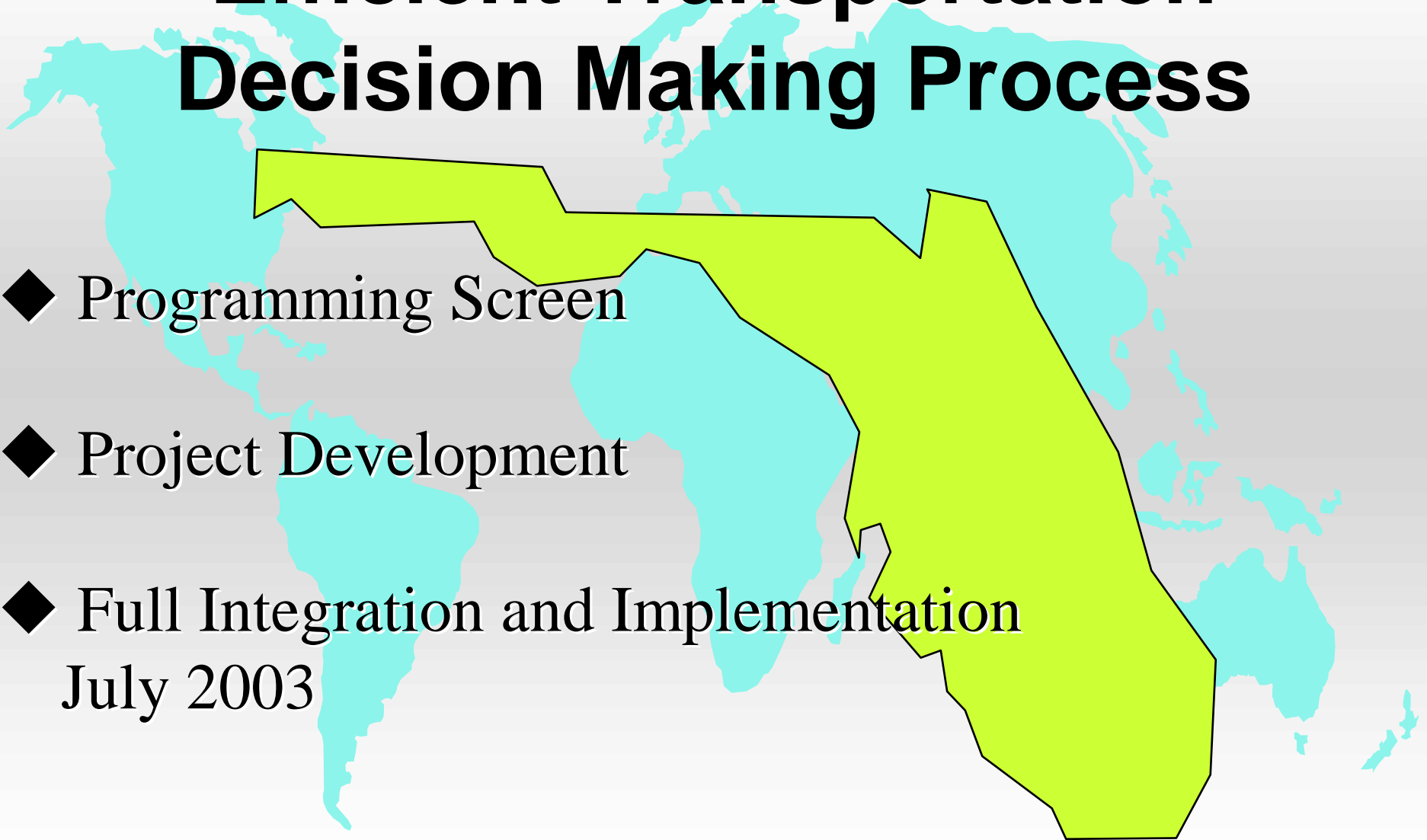
Efficient Transportation Decision Making Process

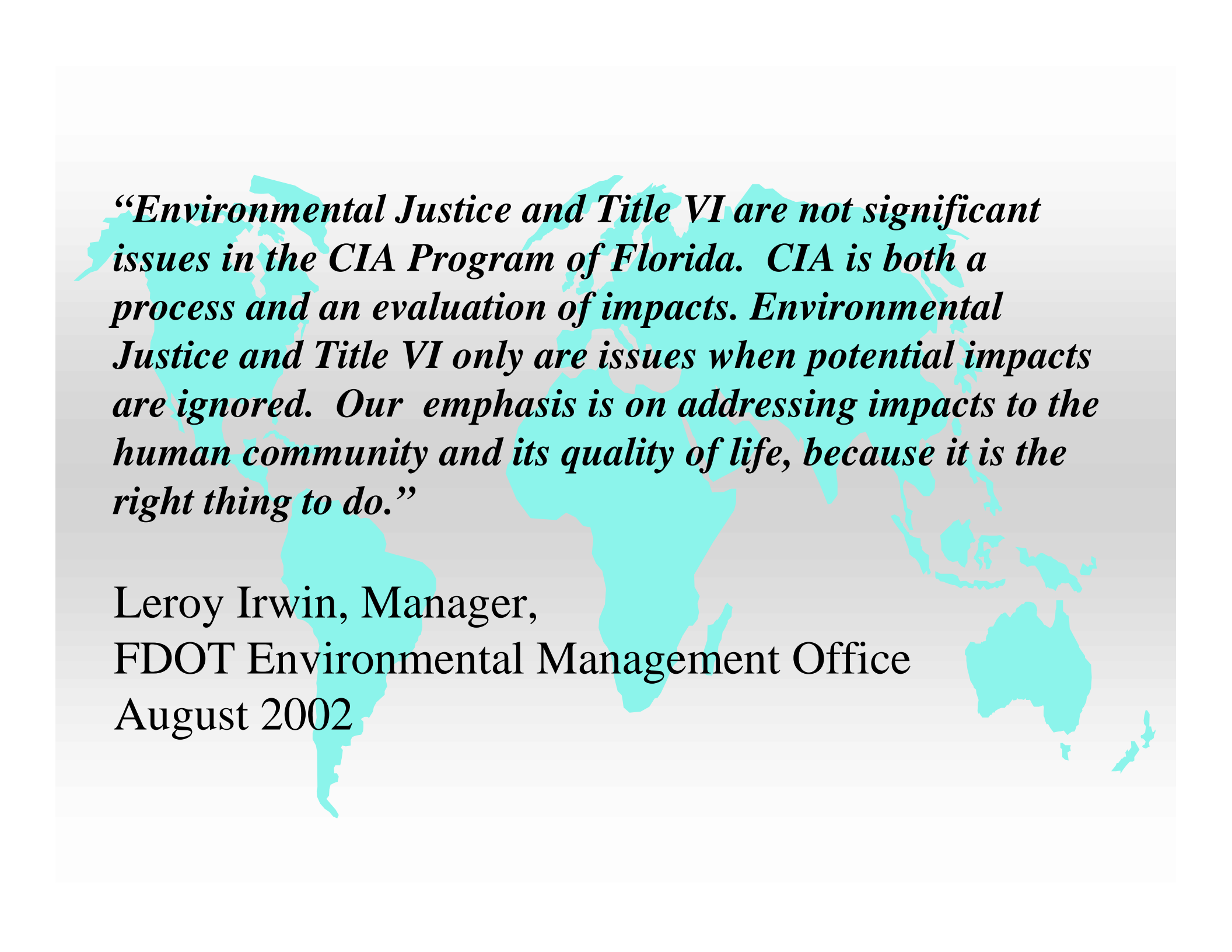
A world map with a light blue background. A large, irregularly shaped region in the Middle East and Central Asia is highlighted in a bright yellow-green color. This region includes parts of Turkey, Iraq, Iran, Afghanistan, and Pakistan. The rest of the world's landmasses are shown in a light blue color.

- ◆ Screening Concepts
- ◆ Community Input
- ◆ Community Characteristics
- ◆ GIS Screening
- ◆ Planning Screen

Efficient Transportation Decision Making Process

- ◆ Programming Screen
 - ◆ Project Development
 - ◆ Full Integration and Implementation
- July 2003





“Environmental Justice and Title VI are not significant issues in the CIA Program of Florida. CIA is both a process and an evaluation of impacts. Environmental Justice and Title VI only are issues when potential impacts are ignored. Our emphasis is on addressing impacts to the human community and its quality of life, because it is the right thing to do.”

Leroy Irwin, Manager,
FDOT Environmental Management Office
August 2002



Y'all come to Florida!

[Back to Circular E-C054: Third National Community Impact Assessment Conference](#)