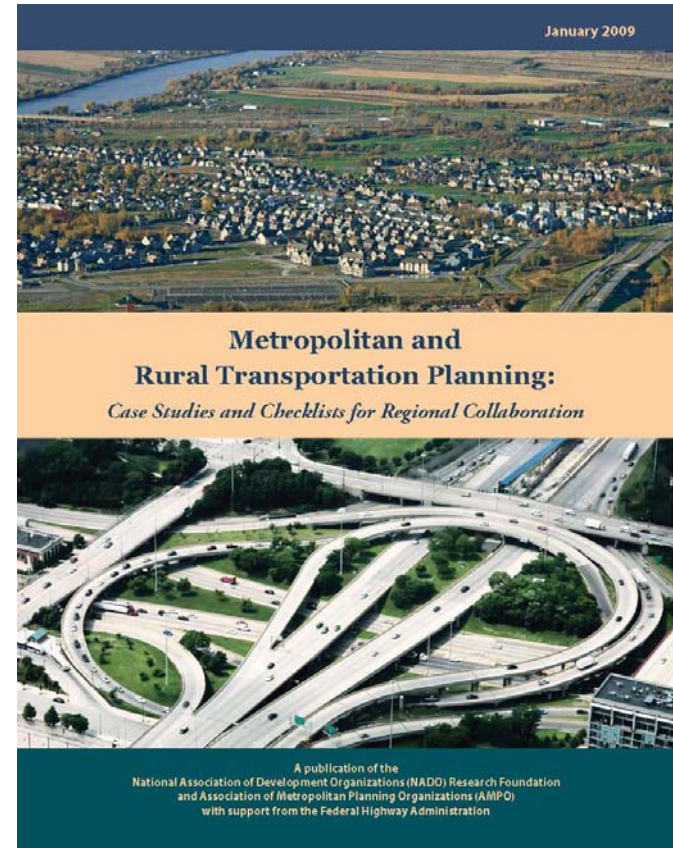




Chittenden County  
Metropolitan Planning  
Organization

# Synergies of Urban and Rural Planning through the Eyes of a Rural Metropolitan Planning Organization

Michele Boomhower  
Executive Director  
Chittenden County MPO





Chittenden County  
Metropolitan Planning  
Organization

# Vermont



- Population: 621,760 (July 2009)
- Labor Force: 361,100 (February 2009)

## Chittenden County

- Vermont's largest employment center
- 1 / 4 of Vermont's Population
- 1 / 3 of Vermont's Jobs
- Ongoing worker commuter shed expansion
- 1990–2000 44% increase in Franklin County commuters (7,300 trips per day)



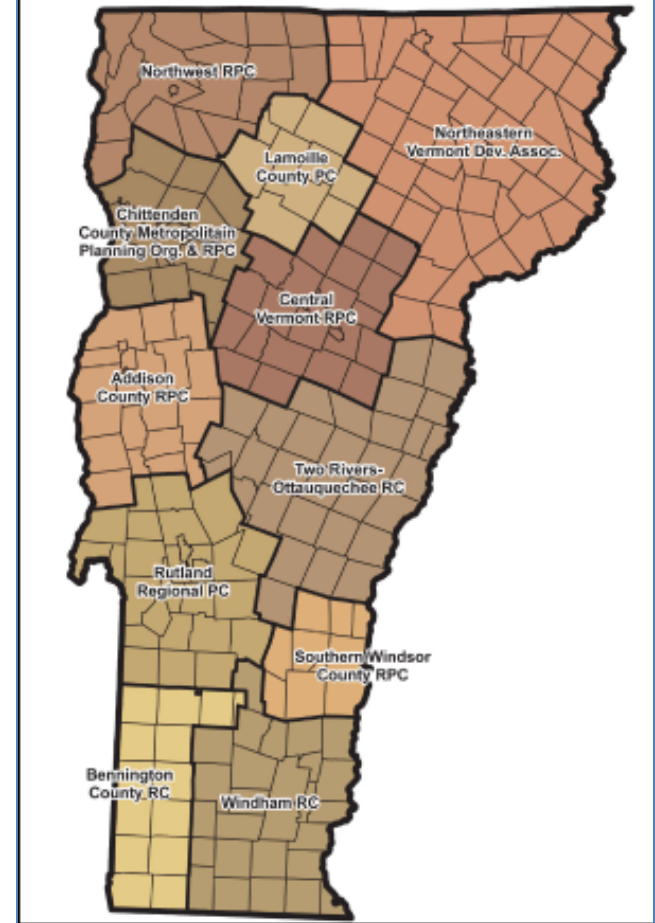
Chittenden County  
Metropolitan Planning  
Organization

## Vermont Case Study RPO/MPO Collaboration *Seamless Statewide Coverage*

### **Vermont Association of Planning & Development Agencies (VAPDA)**

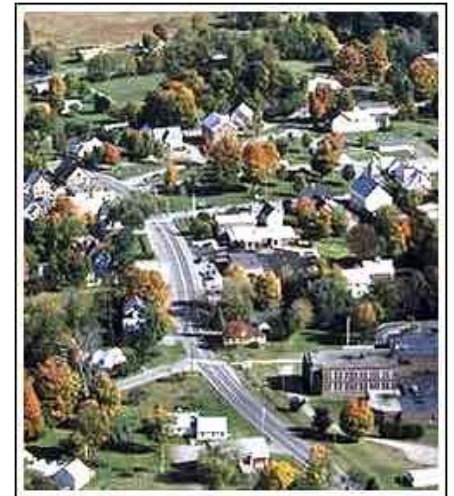
- 11 Regional Planning Commissions
- 1 Metropolitan Planning Organization
- VT Agency of Transportation (VTrans)
- VT Agency of Commerce & Community Development (ACCD)
- VT Agency of Natural Resources (VANR)
- VT Agency of Administration (VAOA)

Vermont Regional Planning Commissions



## ***Coordinated Statewide Transportation Planning***

- Statewide Transportation Planning Initiative (TPI)
- Coordinated by VTrans Planning, Outreach & Community Affairs with assistance from VAPDA
- Monthly Meetings of Transportation Planning Staff/Directors
- Quarterly Executive Staff Meeting with VTrans Division Heads and VAPDA Directors
- VTrans Representation at VAPDA
- Pass Through Funding Agency





Chittenden County  
Metropolitan Planning  
Organization

## Chittenden County – A Mix of Rural & Urban Transit

- Rural Policy Related to Transit Service Delivery
- Balancing Funding of Rural Transit Services in a Modest Ridership Area
- Advancing Transit Oriented Development in Low Density Settings
- Transit as a Component of a Multi-Modal Transportation System
- Coordination and Planning for the Delivery of Services Outside the MPO Area



# Rural Policy Related to Transit Service Delivery



## Chittenden County Transit Authority

- 13 Local Fixed Routes within Chittenden County
- 1 Regional Commuter Route
- 3 Inter-regional Commuter Routes serving Northwestern, Western and Central Vermont (Capital region)
- 2 Routes with 15 minute service, most are 30 minute service
- Limited Sunday service

## Issues

- Reliance on the Local Property Tax – 24% of Revenues from Member Municipalities – Need for Regional Funding Mechanism
- Lack of Density – Need for Transit Oriented Development
- Lack of Funding Autonomy – Little Control over Federal Resources



# Balancing Funding of Rural Transit Services in a Modest Ridership Area

## Planning Funds

\$375,000 Annually

## Sources of CCTA Capital & Operating Funds:

30% Federal

17% State

24% Member Municipalities

23% Fare box & Advertising Revenue

6% Other

## Current Transportation Improvement Program (TIP ) FY11 – FY14

Overall 4 year Federal Program Investments – \$43.9 million

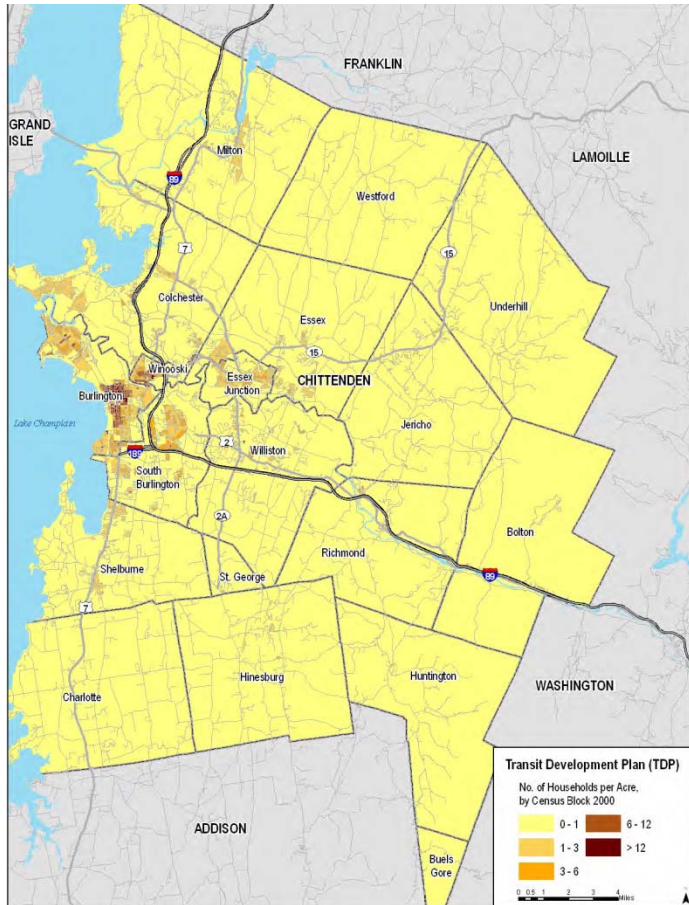
- Including FHWA Transfers to FTA
  - CMAQ – \$4.5 million
  - STP Transfers – \$15.8 million





Chittenden County  
Metropolitan Planning  
Organization

# Advancing Transit Oriented Development in Low Density Settings



## Density

- Fixed Route Service in 7 communities –  
81% of the county population  
17% of the county land mass
- 89% of the Chittenden County has a rural  
density of less than one  
household per acre
- Focus Going Forward
  - Corridor Planning
  - Transit Oriented Development
  - Bus Rapid Transit
- Key Partners – CCMPO & Municipalities



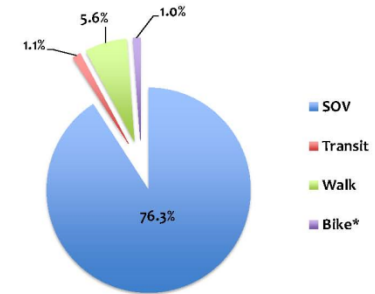
# Transit as a Component of a Multi-Modal Transportation System

## 2000–2008 Census Trends

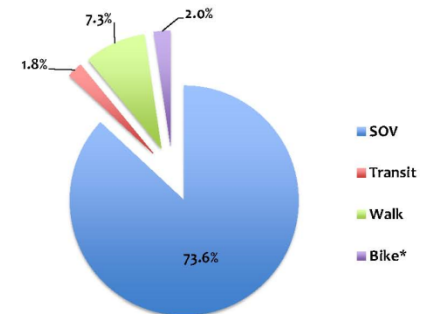
- Single Occupancy Vehicle Trips ↓ 4%
- Work Trips on Public Transit ↑ 70%
- Walking ↑ 30% including 7% of workers
- Biking & Motorcycle use doubles, ↑ 2%
- 11% of Workers Carpool
- 4% Work from Home
- 74% Drive Alone to Work (76% Nationally)

## Changing Transportation Trends

2000 Census



ACS 2006-2008





# Coordination and Planning for the Delivery of Services Outside the MPO Area

## CCMPO Funding of Planning Projects in Adjacent RPC Areas

- Northwestern Vermont Project
- Long Range Metropolitan Transportation Plan (MTP)
- Other Inter–regional Corridor Planning Efforts



## Coordination and Planning for the Delivery of Services Outside the MPO Area



### The Northwest Vermont Project

A collaborative effort to study growth and development in northwestern Vermont as it related to the region's transportation infrastructure.

- CCMPO, 5 Regional Planning Commissions in Northwest VT, FHWA, VT Agency of Transportation (VTrans)
- 4 Year Project (2004 – 2008)
- Funded by FHWA and VTrans
- Eight planning tools developed
- Purpose: to assist municipalities with managing growth and development while protecting character and resources



Chittenden County  
Metropolitan Planning  
Organization



## The Northwest Vermont Project

### Overarching Goals:

- To project future growth at the local level using state-of-the-art growth modeling tools;
- To assess municipalities' abilities to manage growth now and in the future;
- To develop model tools and strategies to be used by municipalities to plan for future growth in a manner that reflects local land use and transportation goals.



Chittenden County  
Metropolitan Planning  
Organization

## Northwest Vermont Project



Each RPC carried out the Northwest Vermont Project differently in their respective regions

### Addison County

- Build-out analysis
- Visual evaluation of the corridors
- Evaluation of safety issues
- Access management guidelines

### Franklin and Grand Isle Counties

- Development constraint analyses
- Build-out analyses
- Identification of community's capacity to manage growth and identified future growth management needs



Chittenden County  
Metropolitan Planning  
Organization

## Northwest Vermont Project



Each RPC carried out the Northwest Vermont Project differently in their respective regions

### Chittenden County

- Growth forecasting and analysis
- Access management

### Lamoille County

- Model road standards ordinance
  - Town of Cambridge
- Cost of Community Services Study  
Land Use Regulations

### Washington County

- Development potential analysis
- Build-out analysis





## Coordination and Planning for the Delivery of Services Outside the MPO Area

### Long Range Metropolitan Transportation Plan (MTP) 2009–2011

\$100,000 to 4 Adjacent Regional Planning Commissions

- Identification of Key Regional Commuter Corridors spanning 22 Communities
- Analysis of Existing Conditions related to Inter-County Travel
- Modeling of Future Conditions to 2060

Outcomes Included:

- Traffic Flow Forecasts to 2060
- Sketch Planning for Transit Routes (Express Bus & Rail)
- Potential Park, Ride & Intercept Facility Locations
- Impact of Mode Choice on Congestion



## Other Inter-Regional Projects



### **Vermont Route 15 Corridor Management Plan**

- Caledonia, Lamoille, Chittenden Counties
- 51 miles corridor spanning 8 Communities
- CCMPO, 3 RPCs, VTrans

### **Western Corridor Transportation Management Plan**

- Canadian Border to the Massachusetts Border
- CCMPO, 5 RPCs, Vtrans, FHWA
- Multimodal

### **CCTA Transit Development Plan**

- Short Range Transit Plan
- Northwestern/Central western Vermont Regions
- 6 Regional Planning Commissions, CCMPO, Vtrans



## Questions ?

### Resource Links:

Chittenden County MPO Website: [www.ccmppo.org](http://www.ccmppo.org)

Chittenden County Transit Authority: [www.cctaride.org](http://www.cctaride.org)

Northwestern Vermont Project:  
[www.transportation-landuse.org](http://www.transportation-landuse.org)

Western Corridor Transportation Plan:  
[www.vtwesterncorridor.org](http://www.vtwesterncorridor.org)