

“Making Connection To Travel Anywhere”



# Navajo Nation Profile

- Navajo Nation Government established 1923
- Three Branch Government
  - Executive
  - Judicial
  - Legislative
- Land Base
  - 27,427 square miles (size of West Virginia)
  - Located in parts of New Mexico, Arizona and Utah
  - Three satellite communities (Ramah, Tohajilee, Alamo)
- Population
  - 2000 Census at 256,712 @ 4.96% growth rate



# Navajo Nation Profile continues

- Navajo Nation Economy
  - Governments @ 30.3%
  - Private Sector @ 52.2%
  - Self-employed @ 18.5%
- Public Transportation
  - Navajo Nation Transit is the only public transportation service
  - Operate along state highways and Navajo routes
  - 51% customers are general public
  - 12% customers are elderly
  - 37% youth/students



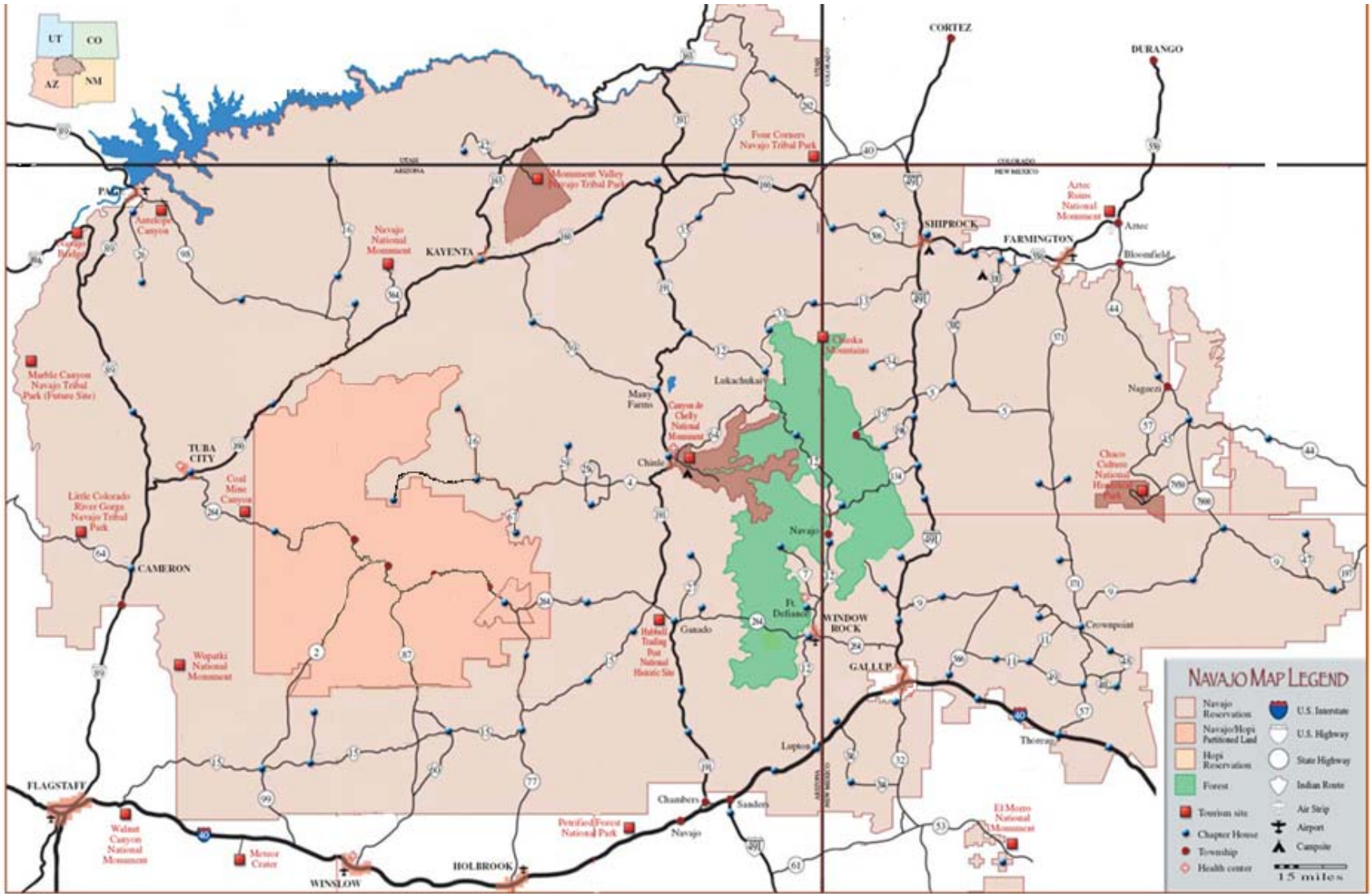
Utah

Colorado

Arizona

New Mexico

Navajo Nation



**NAVAJO MAP LEGEND**

- Navajo Reservation
  - Navajo/Hopi National Land
  - Hopi Reservation
  - Forest
  - Tourism site
  - Chapter House
  - Township
  - Health center
  - U.S. Interstate
  - U.S. Highway
  - State Highway
  - Indian Route
  - Air Strip
  - Airport
  - Campsite
- 15 miles

# Fixed Transit Routes

## Routes for the passed 28 years

1. Tuba City – Window Rock - Fort Defiance
2. Toyei – Window Rock - Fort Defiance
3. Shonto - Kayenta– Window Rock
4. Crownpoint – Window Rock – Fort Defiance
5. Fort Defiance – Window Rock - Gallup
6. Navajo – Fort Defiance - Gallup
7. Shiprock – Farmington
8. Shiprock – Window Rock – Fort Defiance (Mon & Fri)

# Transit Fixed Routes

## **New Routes Beginning August 2008**

9. Window Rock – Crownpoint - Gallup
10. Flagstaff – Tuba City
11. Birdsprng – Window Rock – Fort Defiance
12. Shiprock – Upper Fruitland - NAPI
13. Chinle – Ganado (will extend to Many Farms)
14. Shiprock – Window Rock - Fort Defiance

## **Up Coming Routes**

15. Kayenta – Tuba City
16. Sanders – Fort Defiance - Ganado
17. Blanding - Montezuma Creek - Red Mesa
18. Oljato – Bluff – Montezuma Creek





**North from Fort Defiance on Navajo Rt. 12 (N12)**

So how do I connect to the world

”Making Connection to Anywhere”





# Transit Transfer Station





3046

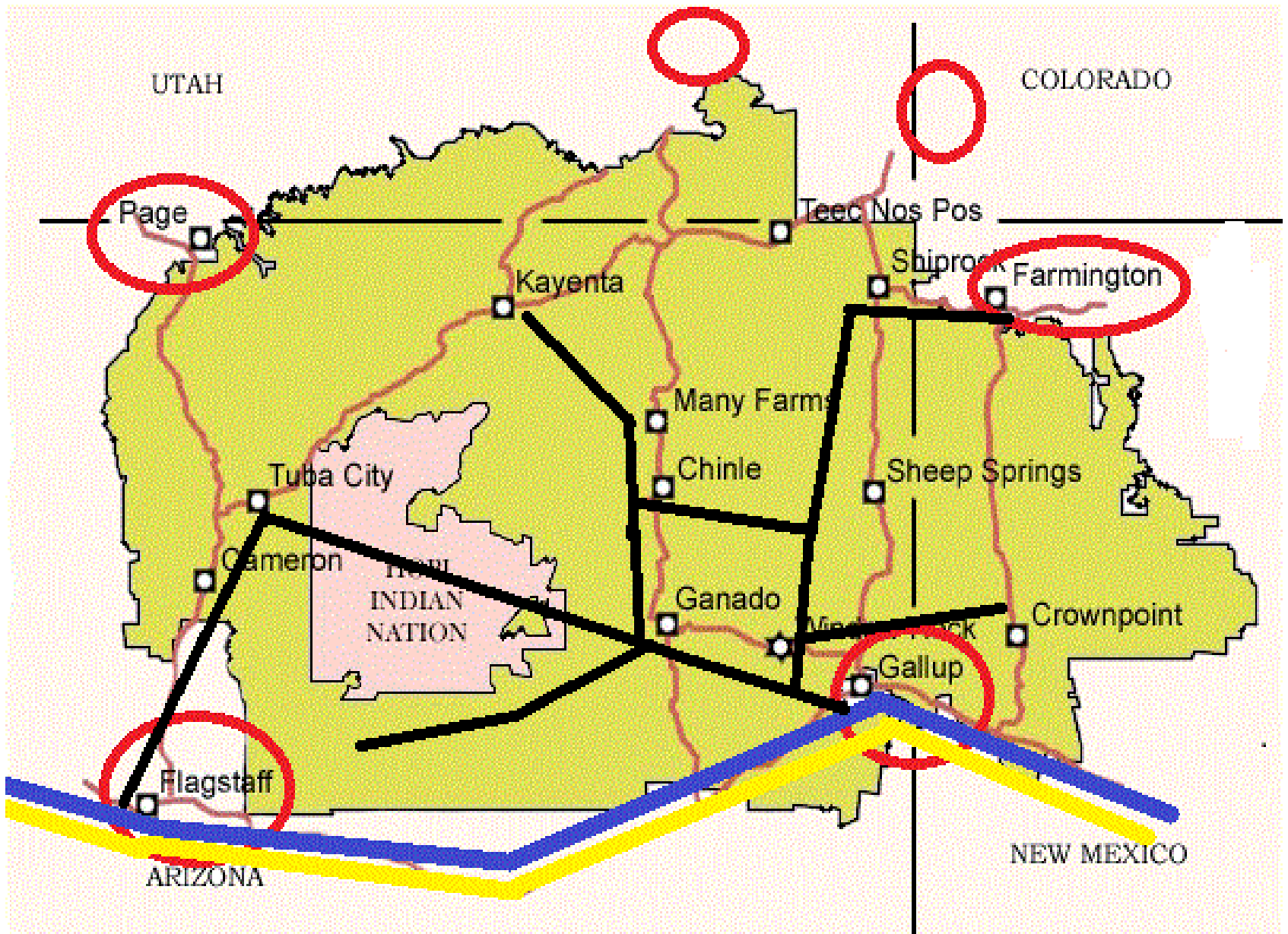
Navajo Transit

www.navajotransit.com  
928-729-4002

DOT 184991

# Connectivity

1. Window Rock, AZ to Amtrak, Gallup Transit Express and Greyhound in Gallup, New Mexico
2. Shiprock, NM to Red Apple Transit in Farmington, NM. Southwest Colorado is planning a regional public transportation
3. Tuba City, AZ to Amtrak, Greyhound, Flagstaff Transit and Flagstaff Community Airport





<b>Routes</b>	<b>Daily Miles</b>	<b>Daily Hours</b>	<b>Weekly Miles</b>
1. Tuba City/Window Rock	169	8.2	845
2. Toyey/Fort Defiance	146	4.0	730
3. Shonto/Window Rock	410	10.0	2,050
4. Crownpoint/Window Rock	185	6.0	925
5. Window Rock/Gallup	153	12.0	765
6. Navajo/Gallup	169	5.2	845
7. Shiprock/Window Rock (M&F)	338	8.2	676
8. Shiprock/Farmington (T,W,Th)	196	5.5	588
9. Shiprock/Window Rock	338	7.2	1,690
10. Shiprock/Fruitland			
11. Flagstaff/Tuba City	304	7.5	1,520
12. Kayenta/Tuba City	294	7.5	1,470
13. Window Rock/Crownpoint/Gallup	298	7.5	1,490
14. Chinle/Ganado	162	7.5	810
15. Dilkon/Fort Defiance	236	7.5	1,180

- People in the area face many mobility challenges in accessing jobs, health care, shopping, education and other essential services.
- The trips to these destinations can be long, and many tribal areas struggle with continuing adverse economic conditions, such as high unemployment.
- Historically, resources to address these challenges have been limited.
- New programs and funding are now available that can help build sustainable tribal transit services.

# Bus Fare

All Day Ride Including Transfers

\$1.00

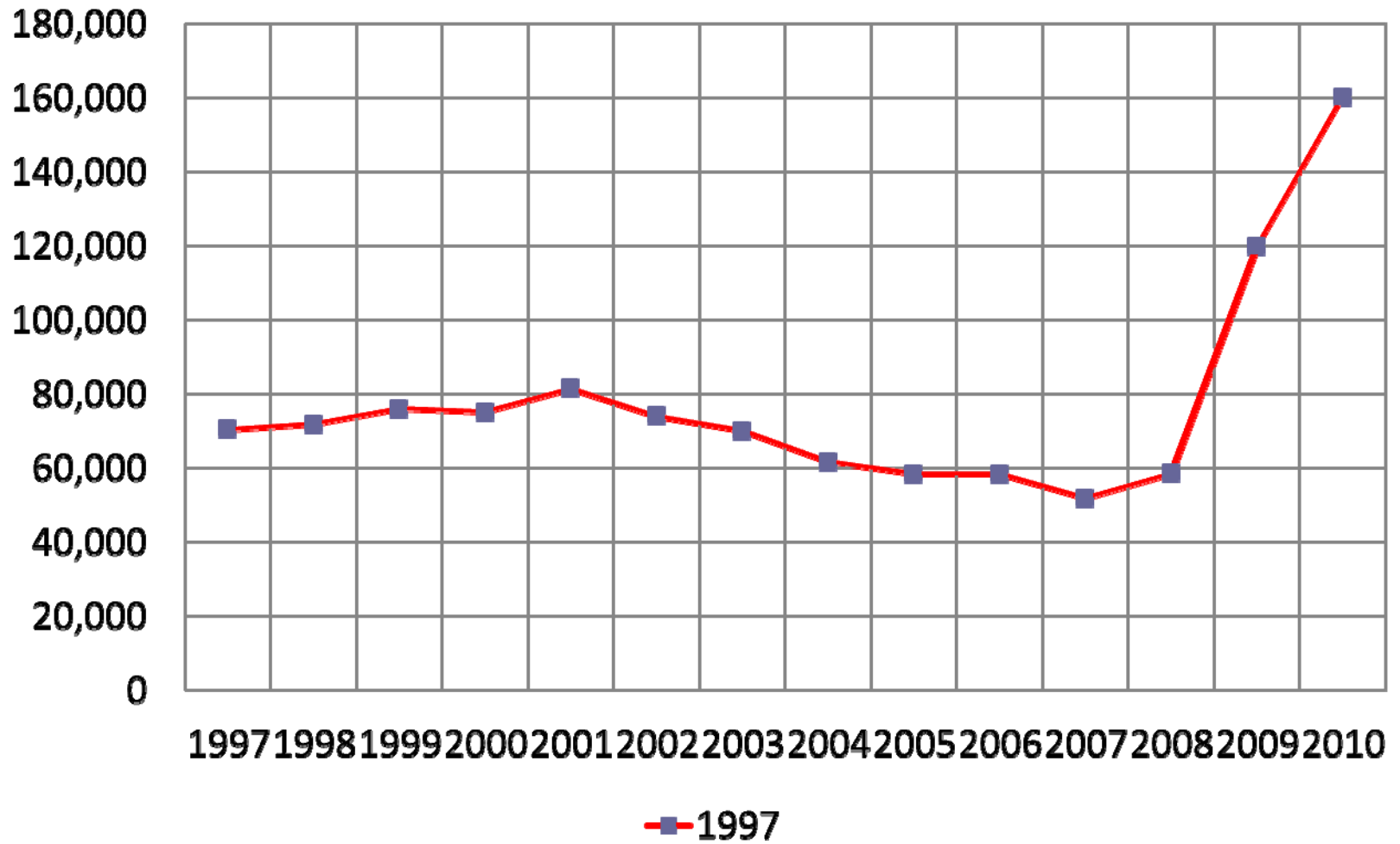
# Marketing



# Ridership Increased



# Navajo Transit Ridership



# Thank You

[lbigwater@navajotransit.com](mailto:lbigwater@navajotransit.com)

