

Managing Changing Traffic Priorities

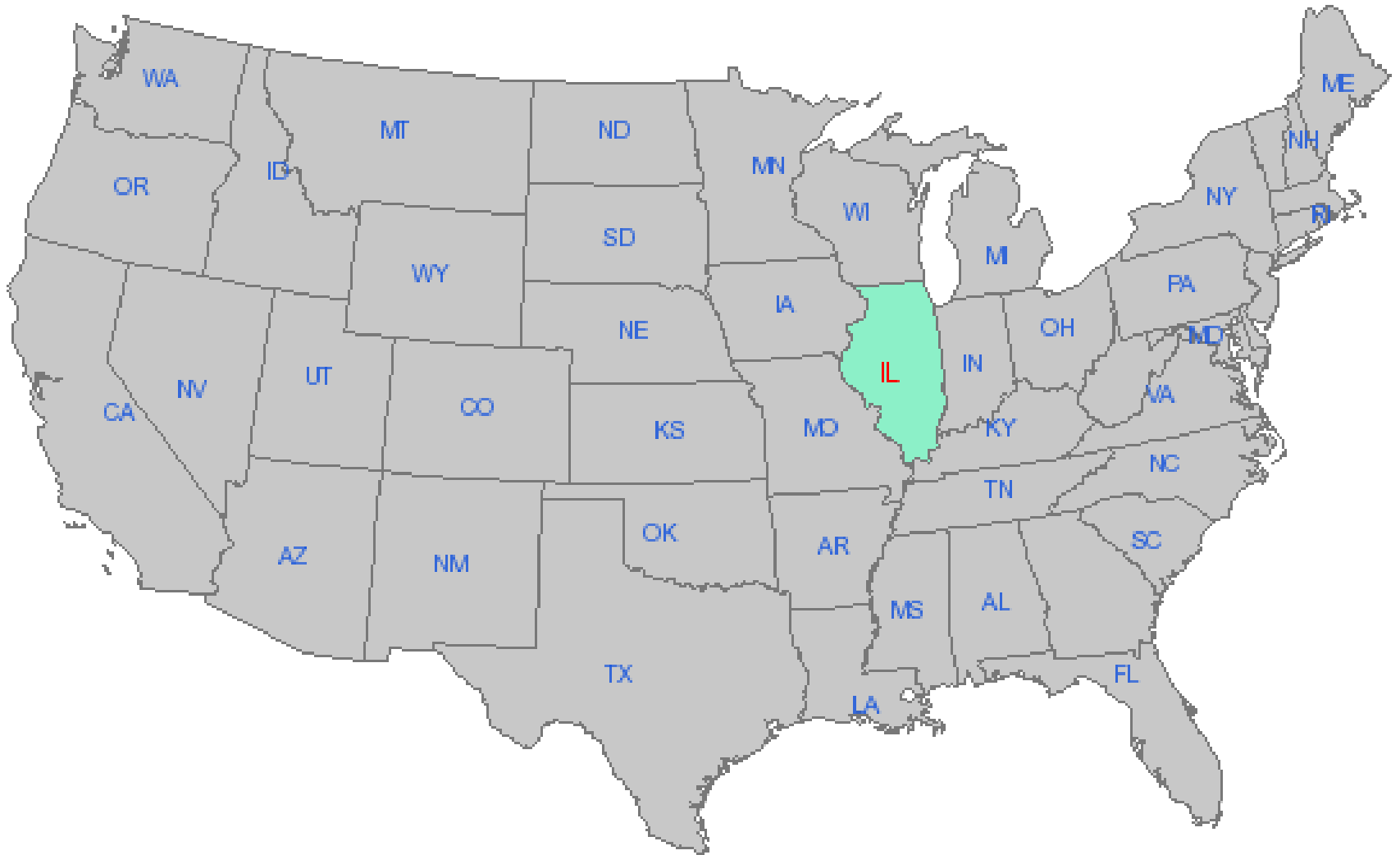


Illinois Department of Transportation

Rob Robinson, rob.robinson@illinois.gov

NATMEC 2010, June 22, 2010

Map Ave →



Traffic Program

- What's causing our core priorities to change
- What items/processes are lower priority (or no longer doing)
- What technologies and other sources of resources are supplementing the Traffic Program

Managing the core priorities

- Safety
- Resources
- Technology
- Utilizing SPR funds
- Changing FHWA requirements
- Upper management turnover

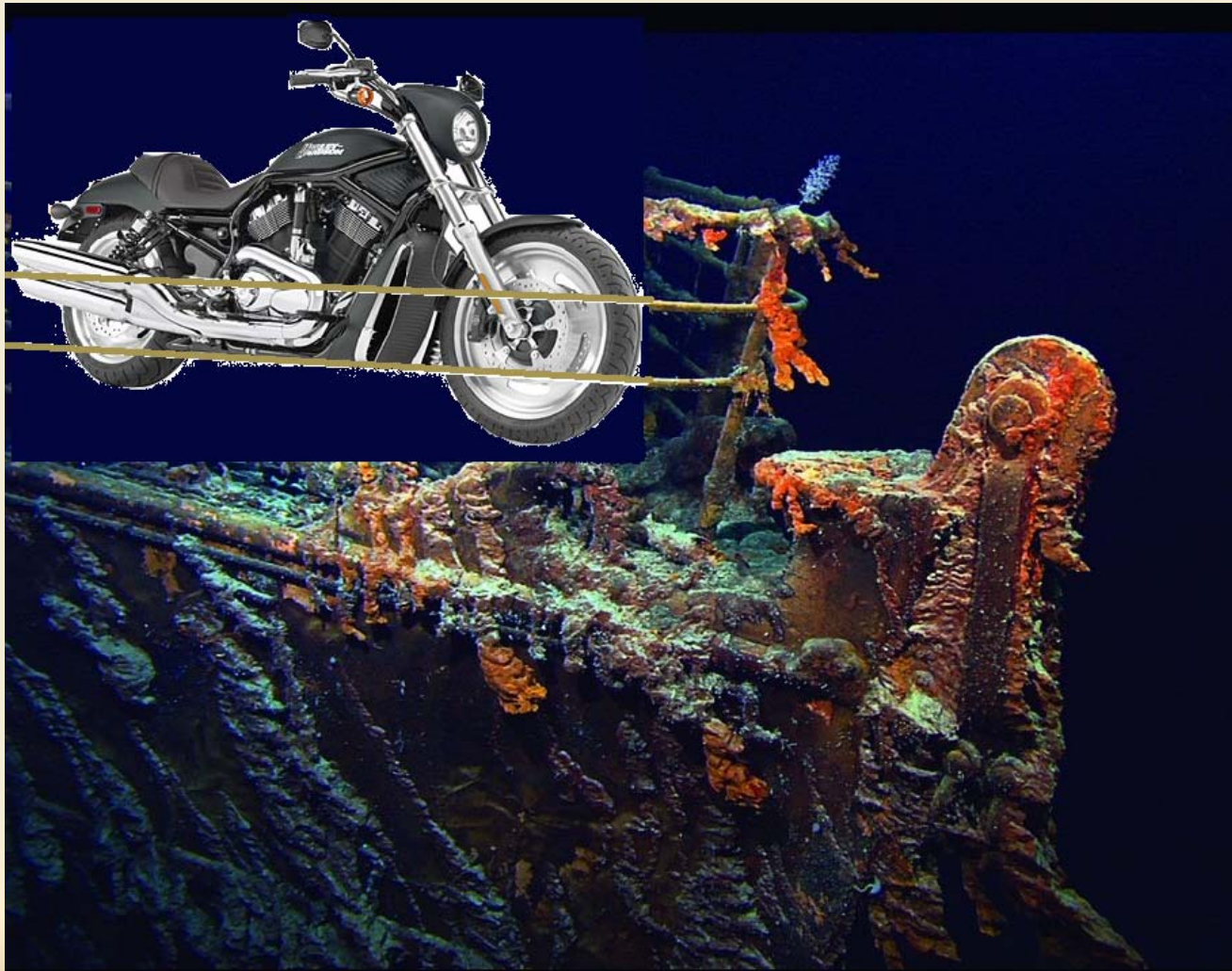
Decisions



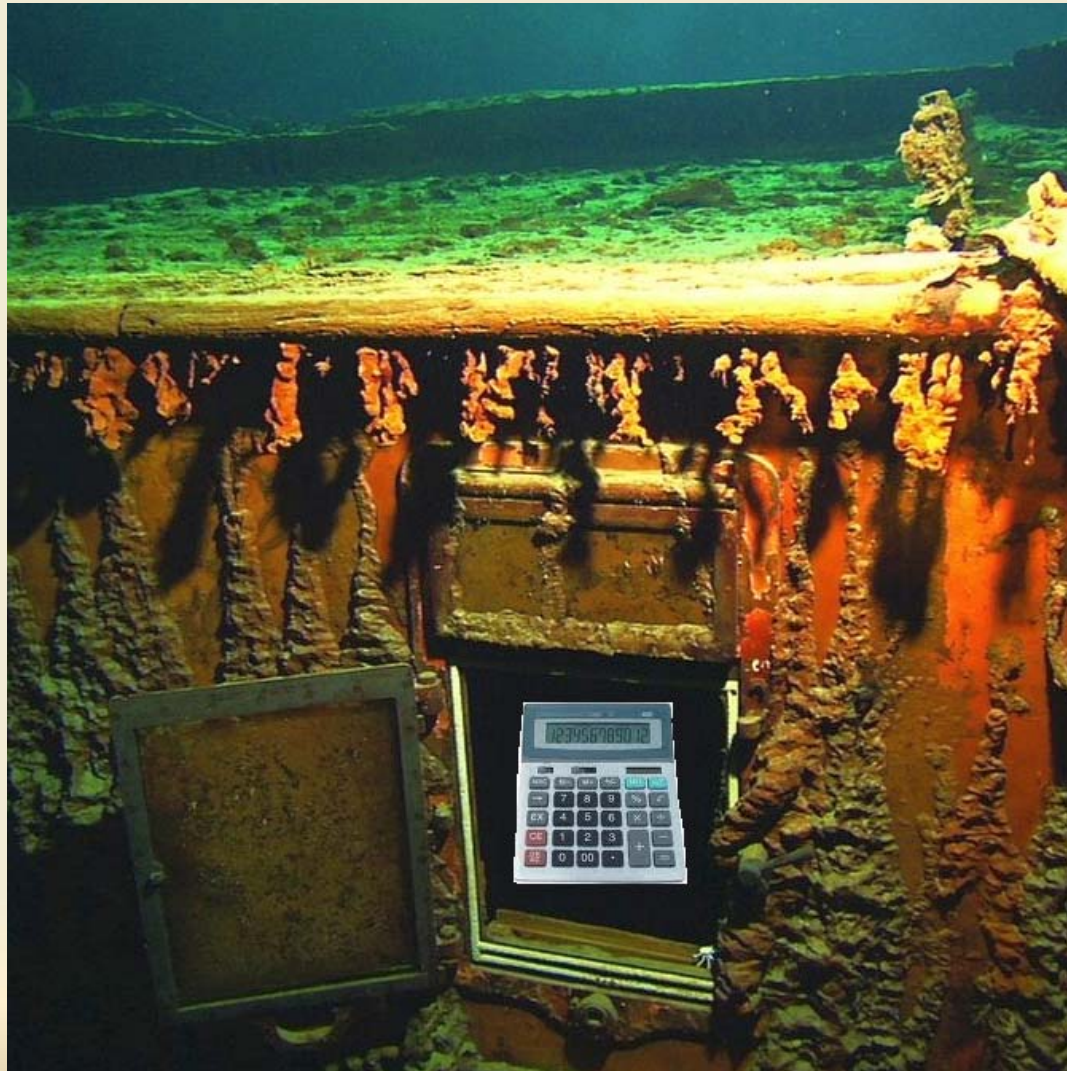
Paper Traffic maps



Motorcycles



Updating Seasonal Factors



Local Road coverage



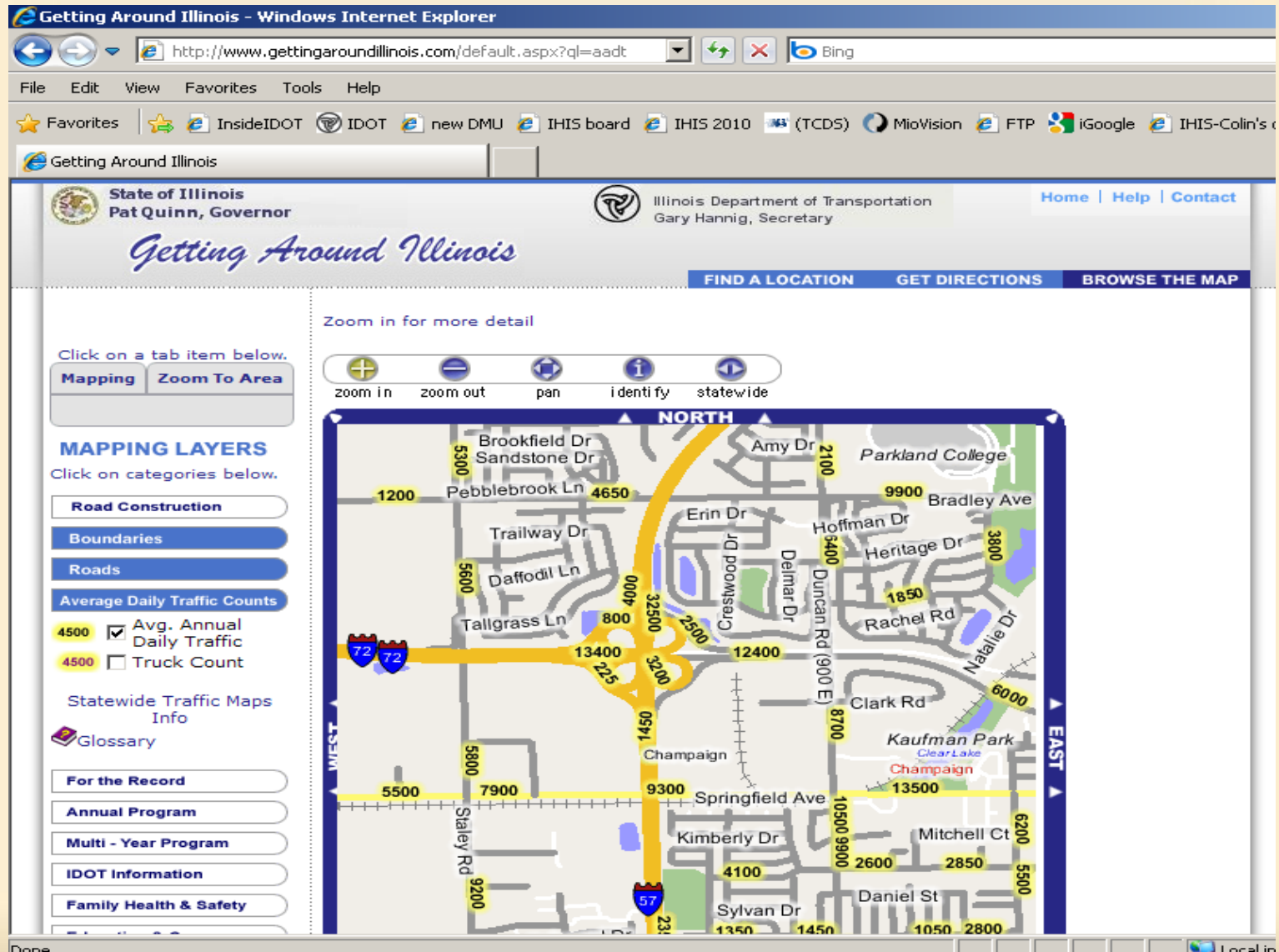
Fit together with IDOT's needs



How we handling priorities

- Technology
- More continuous count sites
- Non-IDOT resources

Interactive map for AADT data



GIS Shapefiles with AADT data

Illinois Department of Transportation - Windows Internet Explorer

http://www.dot.il.gov/gist2/016.html

File Edit View Favorites Tools Help

Favorites InsideIDOT IDOT new DMU IHIS board IHIS 2010 (TCDS) MioVision FTP iGoogle IHIS-Colin's dev site I-ROADS

Illinois Department of Transportation



Illinois Department of Transportation
Gary Hannig, Secretary

Pat Quinn, Governor

Home Directory Help FAQs Site Map Contact Us




TRAVELING PUBLIC MAPS PROJECTS ROAD CLOSURES NEWS DOING BUSINESS LETTING & BIDDING CAREERS @ IDOT GENERAL INFO

Cook County

[Return to Home](#)

Download County Files (.exe)

-  [Highways](#)
-  [Railroad Crossings](#)
-  [Structures](#)

[*Download All Files](#)

Search IDOT GO

Suggest Your Budget Solution
budget.illinois.gov

Most Requested ...

State Links ...

OTHER RESOURCES

- Accountability
- Bicycling
- County Engineers
- Environment
- Inspector General
- IPASS
- Minority Outreach
- Motorcycling
- Office of Business & Workforce Diversity

Local intranet 100%

Video collection on high AADT routes



Hourly data - 10,000 locations

Traffic Count Database System (TCDS) - Windows Internet Explorer

http://idot.ms2soft.com/tcds/tsearch.asp?loc=Idot&mod=

File Edit View Favorites Tools Help

★ Favorites InsideIDOT IDOT new DMU IHIS board IHIS 2010 (TCDS) MioVision FTP IGoogle IHIS-Colin's dev site I-ROADS

Traffic Count Database System (TCDS)

Illinois Department of Transportation
Traffic Count Database System (TCDS)

Home TSMS TCLS TDS PMS PMDS RSMS PCDS PMMS WOTS RTV
Back Login Locate Locate All

Zoom To: [open map](#) auto-locate OFF

[View in Excel](#)

LOCATION INFO	
Location ID	084 0222
Type	LINK
Funct'l Class	
Located On	6TH ST
From Road	ASH ST
To Road	MYRTLE ST
Direction	-
Community	SPRINGFIELD
MPO ID	
HPMS ID	
Agency	Illinois DOT

INTERVAL:60-MIN	
Time	Hourly Count
0:00-1:00	116
1:00-2:00	63
2:00-3:00	49
3:00-4:00	43
4:00-5:00	86
5:00-6:00	235
6:00-7:00	927
7:00-8:00	2,154
8:00-9:00	1,795
9:00-10:00	962
10:00-11:00	930
11:00-12:00	908
12:00-13:00	1,209
13:00-14:00	1,190
14:00-15:00	956
15:00-16:00	889
16:00-17:00	852
17:00-18:00	803

COUNT DATA INFO	
Start Date	Wed 7/15/2009
End Date	Thu 7/16/2009
Start Time	1:00:00 PM
End Time	1:00:00 PM
Direction	
Notes	

[Printable Version](#)

[View Graph](#)

Map Satellite Hybrid GIS Only
Geocode Back
TOOLS
Springfield Sangamon

POWERED BY Google
Map data ©2010 Google - Terms of Use

http://www.google.com/intl/en_us/help/terms_maps.html

Traffic Count Database System (TCDS) - Windows Internet Explorer

Start Inbox - Microsoft... Miovision videos IDOT - Robinson... Illinois Departme... Traffic Count D... Document1 - Micr... 1:56 PM

Web based Road Inventory and Traffic app

Idot.Silverlight.Ihis - Windows Internet Explorer

http://cosgisdev1/ihisdev/ihis.aspx

File Edit View Favorites Tools Help

Idot.Silverlight.Ihis

084 10055 00000 - Illinois Highway Inventory System

Roadway Inventory

Open Roadway Show Map Navigate Select

CRS Physical Attributes Route Identification Traffic Count Construction History Reference Points Operations

Inventory Editors

Inventory 084 10055 00000 From 0.00 To 34.08 Sangamon FAI 0055 District 6

Map Traffic Count [A|W] Traffic Count [A|W]

From	To	AAADT	Year	SU Volume	MU Volume	HC Volume	Truc
0.00	3.02	28,700 [- -]	2009	1,000 [- -]	6,300 [- -]	7,300 [- -]	
3.02	4.51	29,200 [- -]	2009	1,200 [- -]	6,100 [- -]	7,300 [- -]	
4.51	6.37	36,100 [- -]	2009	1,700 [- -]	7,400 [- -]	9,100 [- -]	
6.37	11.28	35,100 [- -]	2009	1,800 [- -]	7,400 [- -]	9,200 [- -]	
11.28	13.18	43,600 [- -]	2009	1,300 [- -]	6,300 [- -]	7,600 [- -]	
13.18	15.46	48,900 [- -]	2009	1,200 [- -]	6,000 [- -]	7,200 [- -]	
15.46	17.45	47,600 [- -]	2009	2,900 [- -]	8,100 [- -]	11,000 [- -]	
17.45	19.40	51,100 [- -]	2009	3,200 [- -]	10,400 [- -]	13,600 [- -]	
19.40	20.51	51,300 [- -]	2009	1,600 [- -]	8,100 [- -]	9,700 [- -]	
20.51	22.53	52,900 [- -]	2009	2,700 [- -]	8,500 [- -]	11,200 [- -]	
22.53	27.48	32,300 [- -]	2009	1,100 [- -]	6,000 [- -]	7,100 [- -]	
27.48	32.17	36,800 [- -]	2009	1,600 [- -]	5,300 [- -]	6,900 [- -]	
32.17	34.08	25,900 [- -]	2009	900 [- -]	5,800 [- -]	6,700 [- -]	

From 19.40 To 20.51

Edit

Years

Centerline

AAADT

Single Unit Volume

Multi-Unit Volume

Against

With

Remarks

Done Local intranet 100%

Continuous Count Locations

- Adding ATR sites on new Stimulus projects (as possible)
- Upgrading 50 weather stations with ATR capability (G-10)
- New ATR sites – loops, TIRTLs

Resources

- Consulting out Traffic Counts

2000 – 20%, 2009 – 70%

Consultants – 20,000 locations a year

All State Routes, County Hwy, Township Roads

- Univ. Graduate Interns
- Univ. studies and research program

Decisions



Questions



Illinois Department of Transportation

Rob Robinson, rob.robinson@illinois.gov

NATMEC 2010, June 22, 2010