

# Navigation Strategic Vision's Contribution to Performance Metrics

*For*  
*Diagnosing the MTS:*  
*Measuring Performance and*  
*Targeting Improvement*

**James Clausner, PE**  
Contractor  
USACE (Retired)

**Jun 26, 2012**



®

US Army Corps of Engineers  
**BUILDING STRONG®**



# Outline

- Navigation Strategic Vision (NSV)
- Strategic Navigation Initiatives (SNI)
- SNIs providing Performance Measurements
- SNI, requiring new performance indicators
- Solicit Opportunities – Leveraging/New SNIs



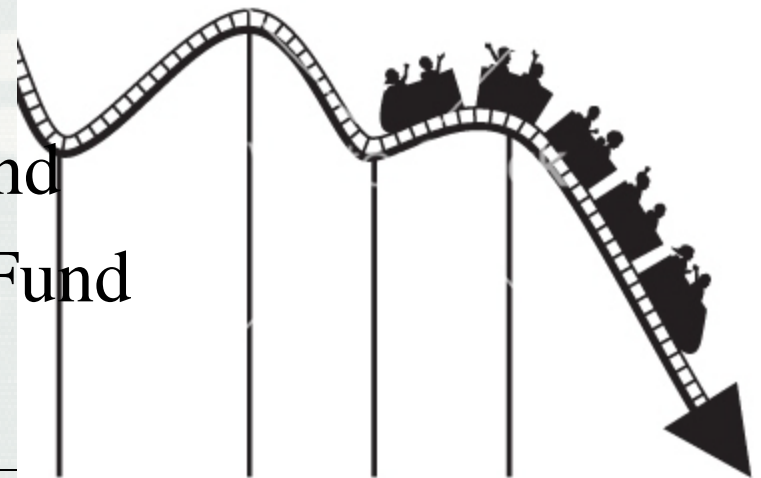
# 2009 Navigation Strategic Vision Workshop

- Need to be more proactive
- Aug 2009 Workshop
- Corps and Stakeholders
- Report development
  - First one is the toughest
  - Issued Feb 2011
- Significant changes from 2009 to 2011
- Need for 2012 Update



# From then to now...

- Funding roller coaster: Up, Down, Up
- Focus on Nation's deficit reduction
- Earmarks ban
- Budget reductions
- Administration's Navigation focus on trust funds
  - Inland Waterways Trust Fund
  - Harbor Maintenance Trust Fund





# 2012 NSV Action Plan

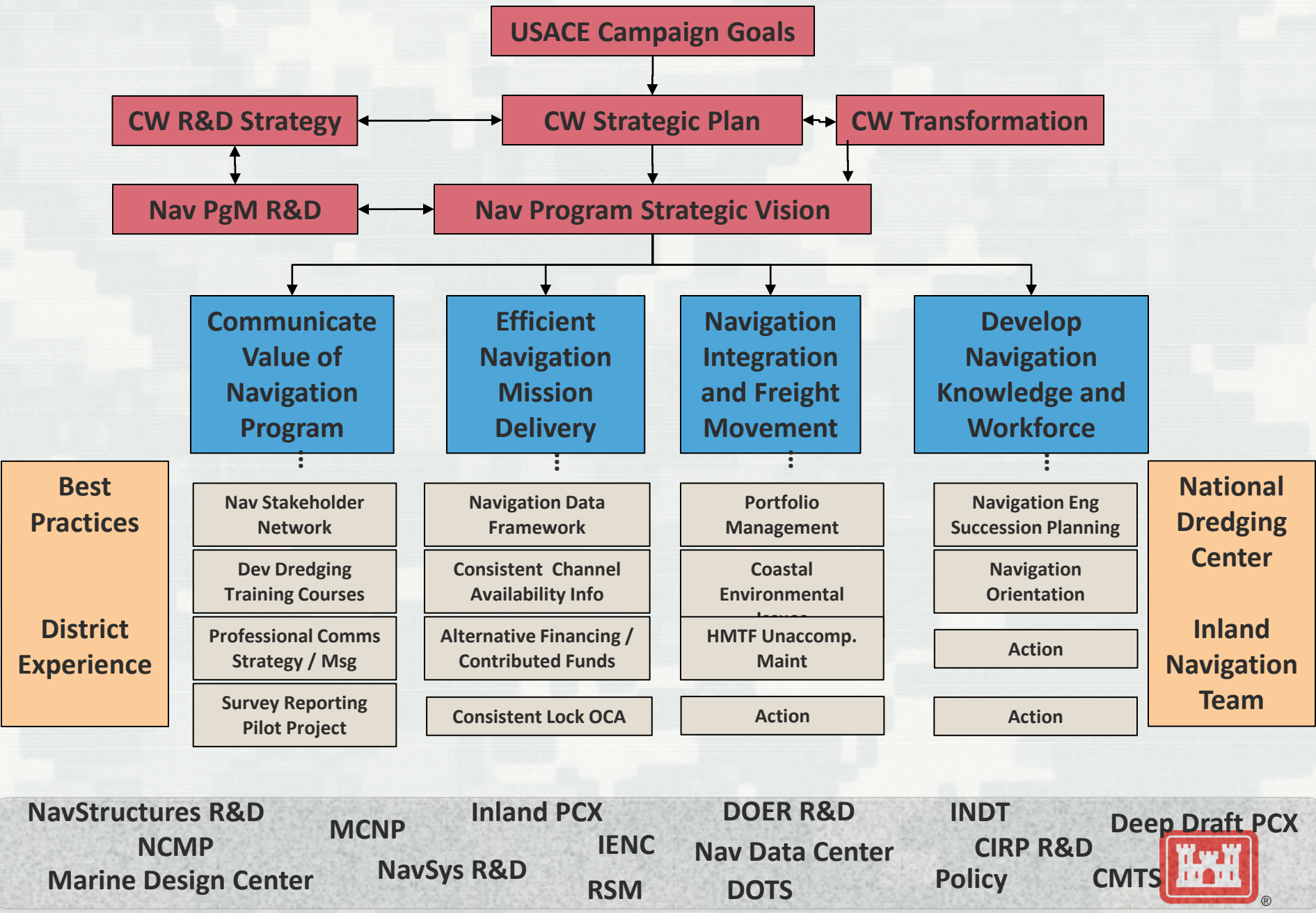
- Primary Areas
  - Communicate the value of the navigation program
  - Efficient Navigation Mission delivery
  - Navigation Integration and Freight Movement
  - Develop Navigation Knowledge and Workforce
- Use as management document
- Draft completed, final report - Sep 12



# Strategic Navigation Initiatives (SNIs)

- Developed in 2010 with Corps Division Navigation Managers
- Initially 45 SNIs
- Good start, organization and follow thru lacking
- Mar 12 NSV workshop, top 16 identified, NSV linked
- Oversight - Strategic Navigation Action Team (SNAT), MSC oversight
- Select SNI leaders, Review PMPs, Insure SNI completed and implementation – regular communication is key





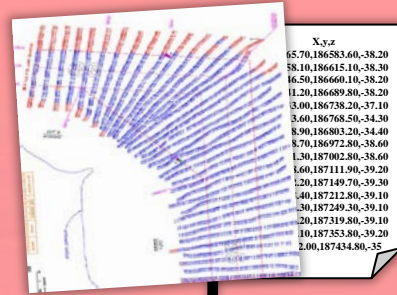
# SNIs – Performance Indicators and Metrics

- NSV Area 2 - Efficient Navigation Mission Delivery
  - Channel Availability – Coastal and Inland
  - Navigation Data Framework
  - Dredging Quality Management (DQM)





# Surveys



# PILOT PROCESS

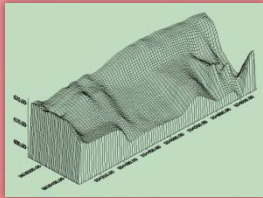
## Framework



*District*

## Hydro Data Enterprise Application

## Volumes



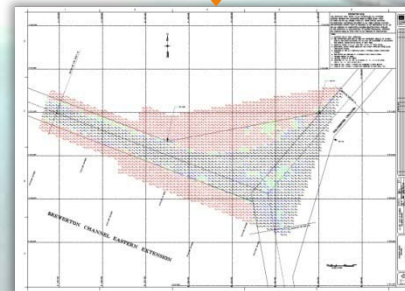
MISSISSIPPI RIVER - GULF OUTLET CHANNEL				
FROM SURVEYS BY THE CORPS OF ENGINEERS - SURVEYS TO NOV 2000				
ROLLING DEPTHS FROM SEAWARD IN FEET AT MEAN LOWER LOW WATER				
MILES				
NAME OF CHANNEL	LEFT CHAIRER	MIDDLE HALF OF OUTSIDE CHAIRER	RIGHT CHAIRER	DATE OF SURVEY
LT. BUOY 1 (29°52'N, 90°33'W) TO LT. BUOY 20 OPPOSITE LIGHT #2	37.0	38.0	29.0	7,10,11-03
THENCE TO INTERSECTION WITH G. I. W. W.	28.0	34.0	28.0	6,7,8-10-03
THENCE TO INNER HARBOR NAVIGATION CANAL	26.0	32.0	22.0	500
	35.0	38.0	29.0	500

NOTE: CONSULT THE CORPS OF ENGINEERS FOR CHANGING CONDITIONS SUBSEQUENT TO THE ABOVE

NOAA Reports

Project - Civil Works Identification System Number	1991					
	Multiple Availability	Total Funding	Total Available Funding	Total Available Funding	Total Available Funding	Total Available Funding
CORPUS CHRISTI SHIP CHANNEL #1434	80,21	5,980,000				5980000
Sea Bu Channel	17,00					
Jetty Channel	17,00					
Inner Basin at Harbor	43,87					
Inner Basin Main Channel	17,00					
Hudson Basin to Junction at La Quinta Channel	81,00					
La Quinta Channel Junction to Basin #2	81,00					
Basin #2 to Main Turning Basin	81,00					
Main Turning Basin	81,00					
Industrial Canal	81,00					
Atway Point Turning Basin	81,00					
Turn Lake Channel	81,00					
Chemical Turning Basin	81,00					
Turn Lake Channel	81,00					
Turn Lake Channel	81,00					
Turn Lake Channel	81,00					
Turn Lake Channel	81,00					
DETROIT RIVER MICHIGAN/04718	80,00	5,880,000				5880000
DULUTH-SUPERIOR HARBOR MINNESOTA/06986	80,00	7,360,000		\$0	\$0	7360000
EAST RIVER/0192	80,00	8,000,000				8000000
FREEPORT HARBOR/04718	81,00	12,550,000				12550000
Outer the Channel	18,17					

HQ Channel Indices



Condition Plots

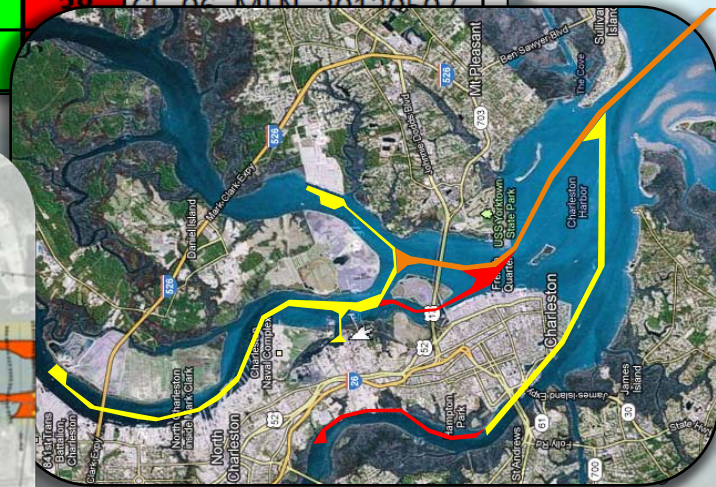
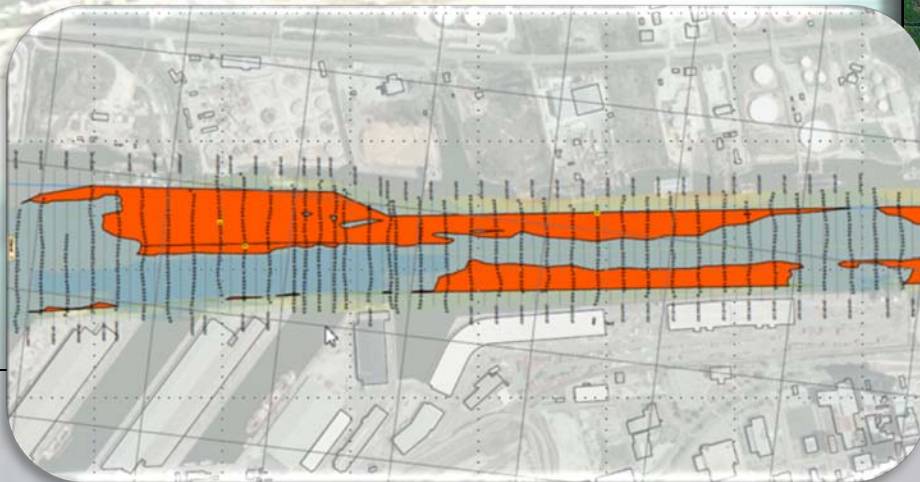
Identification\_Information:  
 Citation:  
 Citation\_Information:  
 Originator: U.S. Army, Corps of Engineers,  
 New England District (comp.)  
 Publication\_Date: 20090306  
 Title: Boston Harbor, Boston, Massachusetts,  
 After Dredge/Condition Survey  
 Geospatial\_Data\_Presentation\_Form: map  
 Series\_Information:  
 Series\_Name: N/A  
 Issue\_Information:  
 Issue\_Identifier: N/A



# Channel Condition Index Report

## Shoaling Report

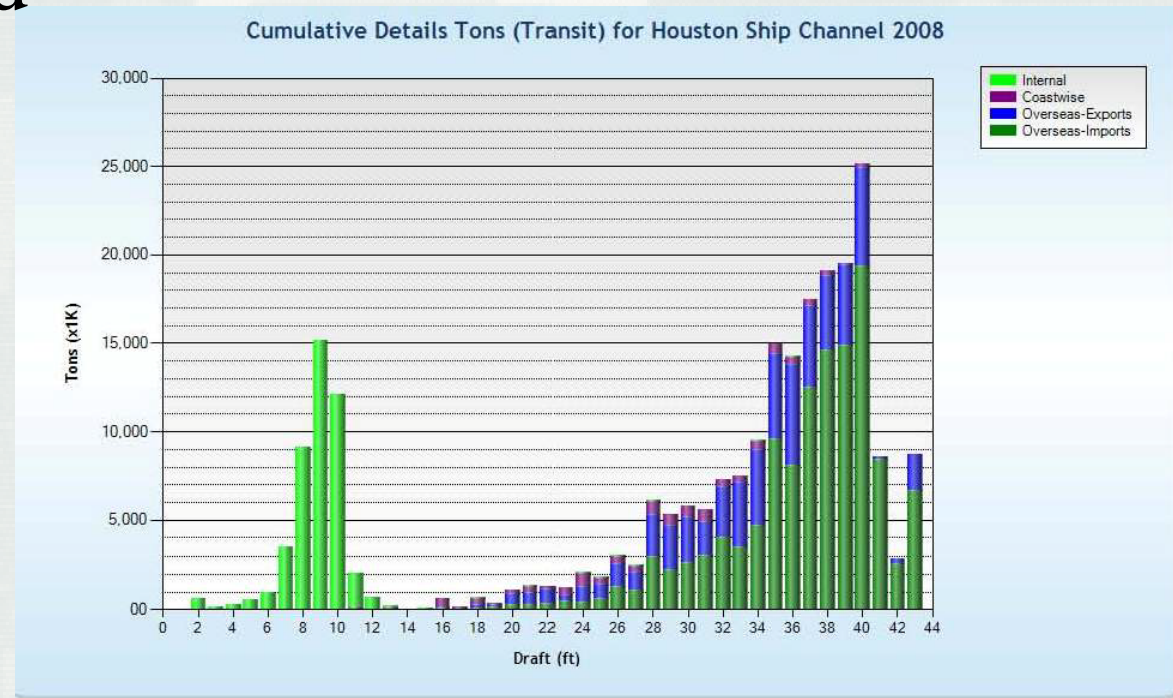
Sheet Name	Reach Name	A	B	C	D	Survey Name
LOWER DESDEMONA SHOAL	CL_01_LDS_1	46	48	49	47	CL_01_LDS_20120426
UPPER DESDEMONA SHOAL	CL_02_UDS_1	42	44	45	43	CL_02_UDS_20120426
FLAVEL BAR	CL_03_FLV_1	39	42	42	36	CL_03_FLV_20120501
UPPER SANDS	CL_04_USN_1	42	45	45	43	CL_04_USN_20120503
UPPER SANDS	CL_04_USN_2	42	44	44	42	CL_04_USN_20120503
TONGUE POINT CROSSING	CL_05_TNG_1	39	44	44	43	CL_05_TNG_20120508
TONGUE POINT CROSSING	CL_05_TNG_2	39	42	42	35	CL_05_TNG_20120508
MILLER SANDS	CL_06_MLN_1	42	45	43	36	CL_06_MLN_20120507
MILLER SANDS	CL_06_MLN_2	40	44	43	38	CL_06_MLN_20120507
MILLER SANDS	CL_06_MLN_3	41	41	43	38	CL_06_MLN_20120507





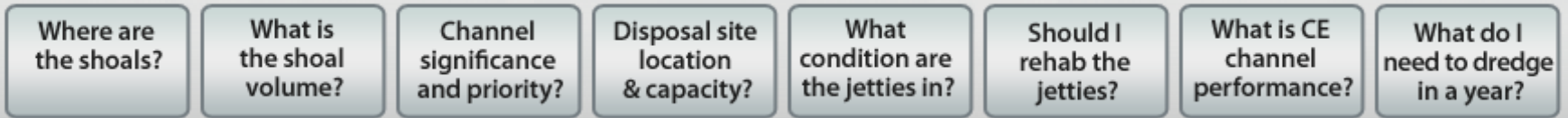
# Channel Portfolio Tool (CPT)

- Decision-support tool, web hosted
- Channel depths
- Economic Data
- Dredging Decisions
- Optimize Commerce

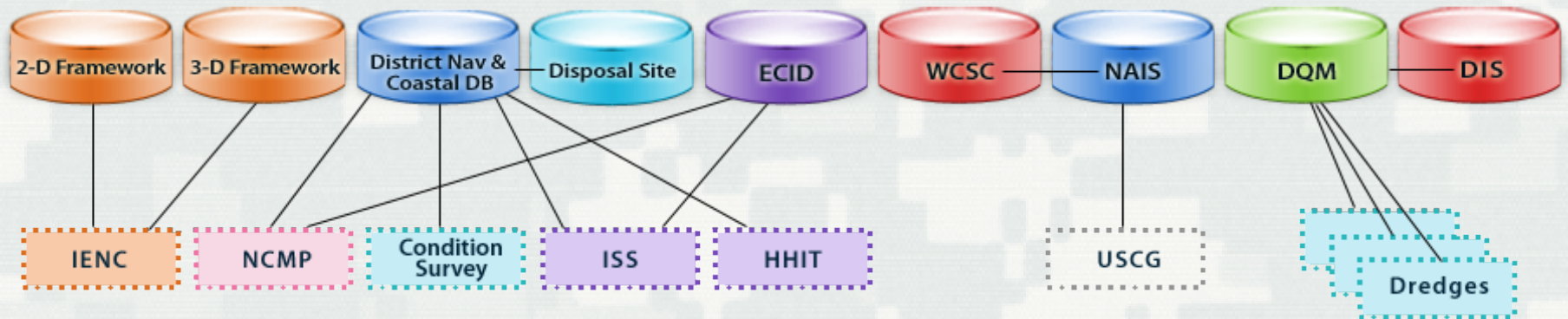
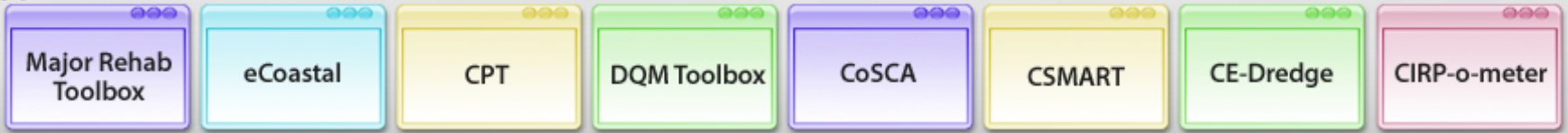


# Integrated Navigation Tools and Data

## Questions



## Applications



## NAVIGATION DATA FRAMEWORK





# Portfolio Management SNI

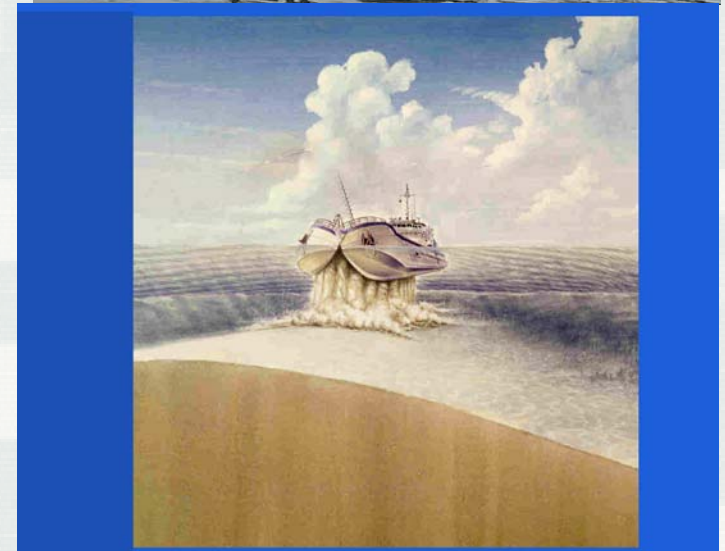
- Area 3 – Navigation Integration and Freight Movement
- Corps manages 1,000 navigation projects
  - Commercial, Fishing, Subsistence, Nation Defense, CG, Refuge
- Past Focus – commercial freight - tonnage
- Desire more balanced, medium, low use, safety
- Need Guidelines
- Almost certain, additional performance indicators and metrics



# Closing

Performance metrics important for effectively managing navigation infrastructure

Now have a strategic vision, initiatives, and oversight to develop metrics and other products to better achieve the vision.



## QUESTIONS?



**BUILDING STRONG®**

# Contact Information

- Jim Clausner
- [james.e.clausner@usace.army.mil](mailto:james.e.clausner@usace.army.mil)
- 904-825-0105
- Navigation Strategic Vision  
<http://operations.usace.army.mil/conference.cfm?CoP=nav&Id=12marnpsp&Type=Conf>



# SNIs

- 1 - Communicate Value of Navigation Program
  - Navigation Stakeholder Network
  - Navigation Communication Strategy
  - Navigation Gateway Revision
- 2 – Efficient Navigation Mission Delivery
  - Pipeline and Utilities Locations on Federal Channels Database
  - Channel Availability - Coastal and Inland
  - Hydrographic Survey Product Use
  - Navigation Data Framework





# SNI's

(continued)

- Alternative financing/Contributed Funds
- Coastal Environmental Issues
- Dredge Contract Process PDT
- Project Sustainability - DMMP revision process
- IMTS Navigation Lock Condition Assessment Status
- 3- Navigation Integration and Freight Movement
  - Portfolio Management
  - Harbor Maintenance Trust Fund
  - Unaccomplished Maintenance



# SNIs

(completed)

- Navigation Knowledge and Career Development
  - Navigation Career Development Planning
  - Dredging training for Executives
  - Dredging training for Environmental Resource Agencies
  - Navigation Orientation

