

# Measuring the Safety and Security of the MTS – A U.S. Coast Guard Perspective

Commander Aaron Sanders, USCG

Office of Performance Management and Assessment

[aaron.m.sanders@uscg.mil](mailto:aaron.m.sanders@uscg.mil)



# Overview

---

- Perspective – CMTS, DHS, CG Vision & Mission
- CG Logic Model
- Selected Safety and Security measures
- Targeting Improvement

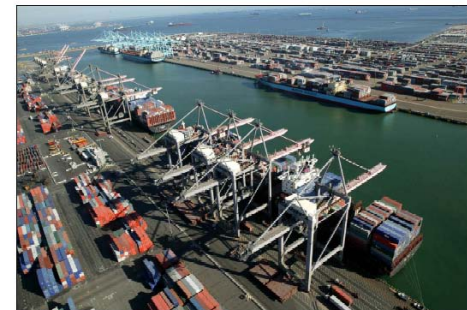


# National Strategy for the MTS (2008)

---

- “The United States MTS will be a safe, secure and globally integrated network that, in harmony w/ the environment, ensures a free-flowing, seamless and reliable movement of people and commerce along its waterways, sea lanes and intermodal connections”
- 5 Priority Areas
  - Capacity
  - Safety & Security
  - Environmental Stewardship
  - Resilience and Reliability
  - Finance and Economics

National Strategy  
for the  
Marine Transportation System:  
*A Framework for Action*



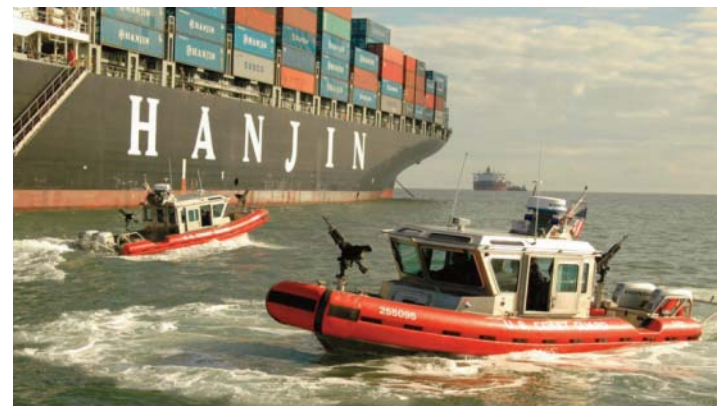
By the  
Committee on the Marine Transportation System  
July 2008



# Department of Homeland Security Missions

---

- Preventing terrorism & enhancing security
- Securing and managing our borders
- Enforcing and administering our immigration laws
- Safeguarding and securing cyberspace
- Ensuring resilience to disasters



# U. S. Coast Guard Mission

---

- Ensure the Safety, Security and Stewardship of the Nation's waters.
  - Protect those on the sea
  - Protect the Nation from threats delivered by the sea
  - Protect the sea itself
  - Support National and economic security & Balanced use of the waterways



# Organizing and Managing to achieve our Mission (Programs)

---

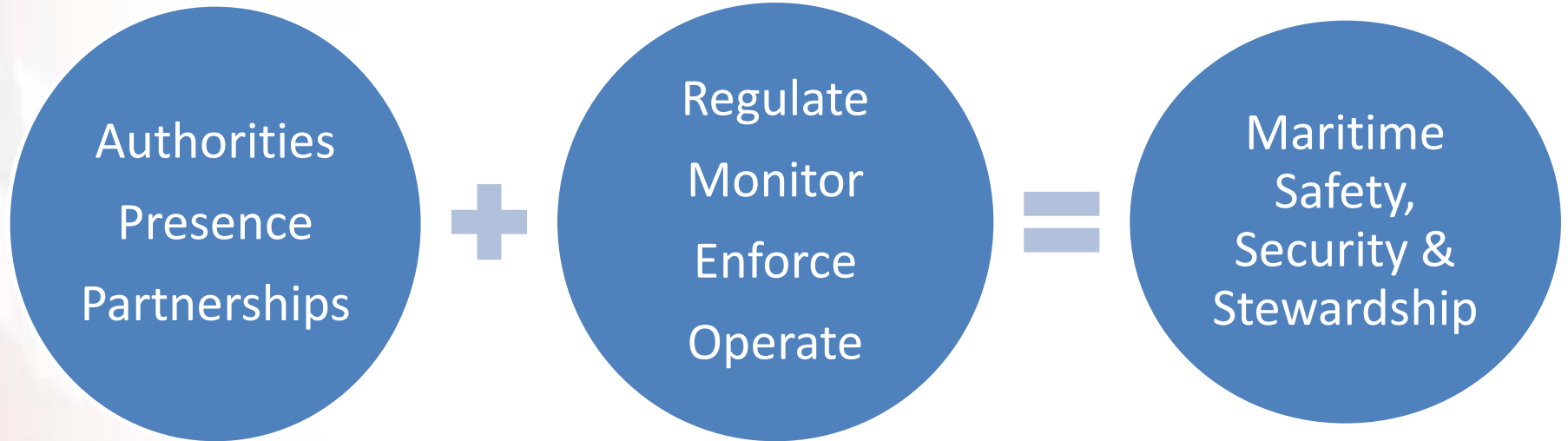
- Maritime Security Operations
- Maritime Law Enforcement
- Maritime Prevention
- Maritime Response
- Defense Operations
- Marine Transportation System Management



# Logic Model

---

## Prevention – Response Concept of Operations



# Measuring Maritime Safety & Security Performance



Selected input,  
activity, output and  
outcome examples





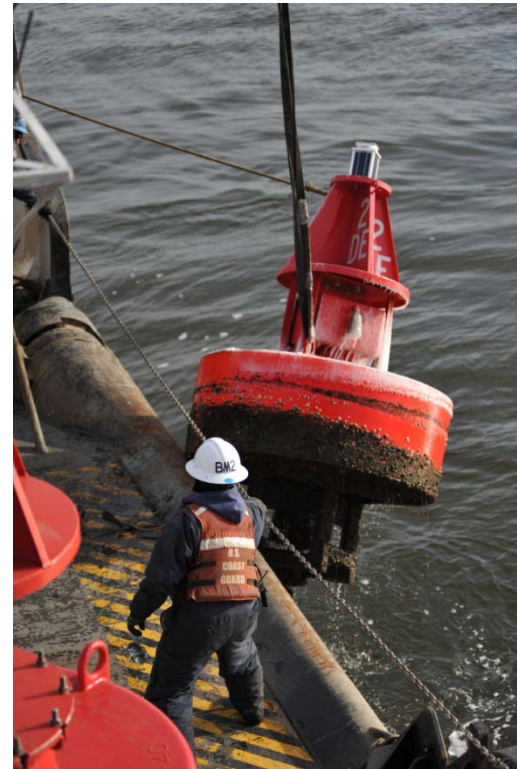
# Maritime Safety

- Search and Rescue
  - % people in imminent danger saved (in the maritime environment)
  - % rescue assets on scene within standards
  - Asset availability



# Maritime Safety

- Aids to Navigation (ATON)
  - Aid availability
  - % of ATON serviced on time
  - Number of navigational accidents



# Maritime Safety

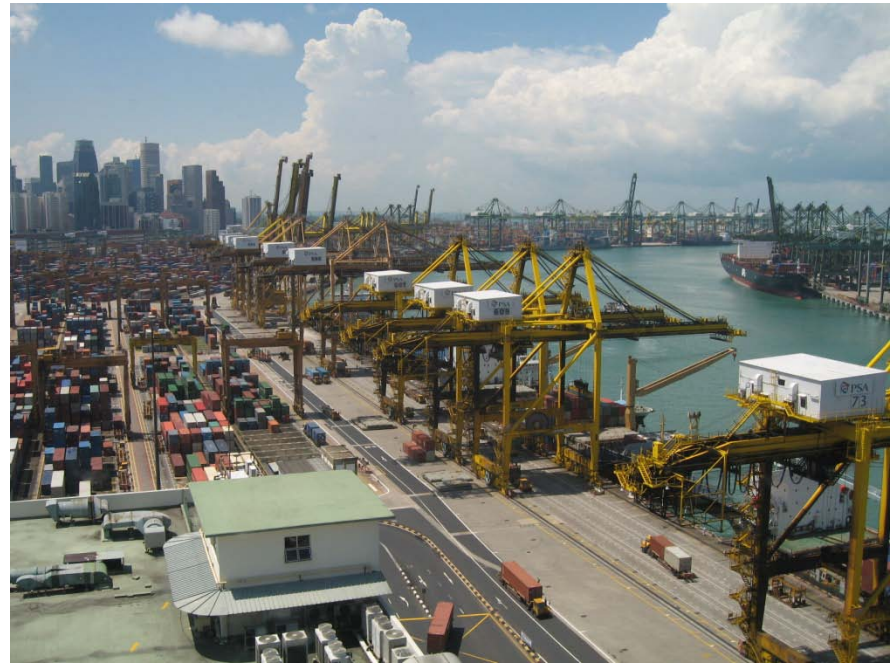
---

- Marine Safety
  - # deaths and injuries
  - Number of navigational accidents
  - % containers inspected for certain dangerous cargoes



# Maritime Security

- Ports, Waterways, and Coastal Security
  - MTSA facility inspections rates & NOVs/ penalties
  - MTSA facility compliance rate w/ Transportation Worker Identification Credential regs.
  - Maritime terrorism & security risk reduction



# Maritime Security

---

- Alien/Migrant Interdiction Operations
  - # undocumented migrants interdicted
- Drug Interdiction
  - Removal rate within the maritime zone



# Maritime Security

---

- Defense Readiness
  - Cutter readiness
  - Readiness assessments



# Targeting Improvement

---

- Use input, activity and output measures to better understand drivers
  - Engage stakeholders to set aggressive but realistic targets
  - Measure, Report, Assess & Adjust regularly
  - Seek to understand CG performance in the context of system performance – with a growing focus on system performance
- 



# Targeting Improvement

---

- Partnerships –
  - Departments of Transportation, Commerce, Interior, EPA, NTSB, Interior and Defense
  - International bodies
  - States
  - NGOs
  - Congress
  - Administration





# Targeting Improvement

---

- Improving Data systems
- Improving ability to measure deterrence, prevention, total risk, risk reduction and residual risk
- Waterway comparative risk model (ATON)
- Communicating Return on Investment and performance for next \$

