

# U.S. INLAND WATERWAY PERFORMANCE INDICATORS FOR GRAIN & OILSEEDS

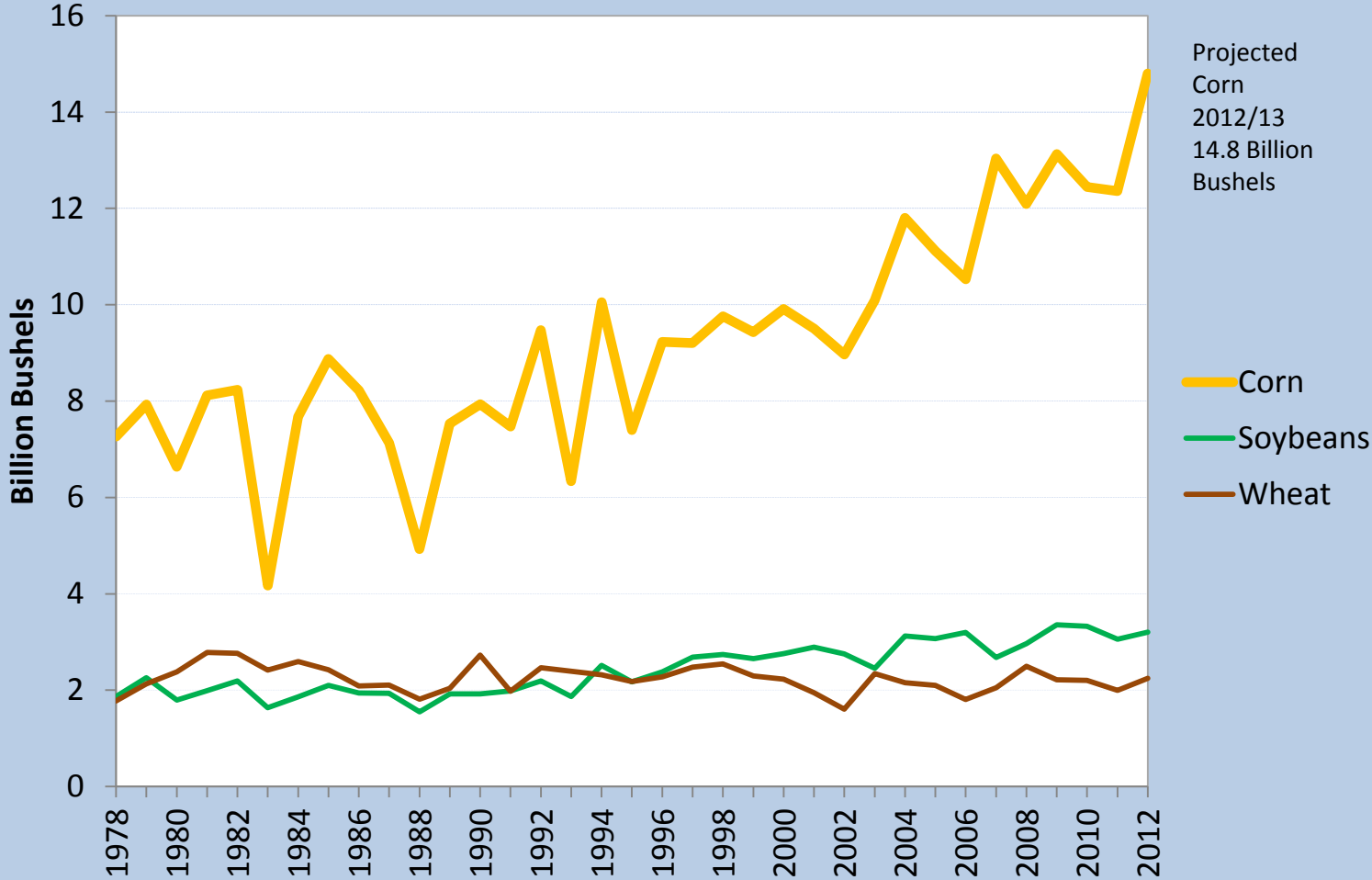
**Nick Marathon**

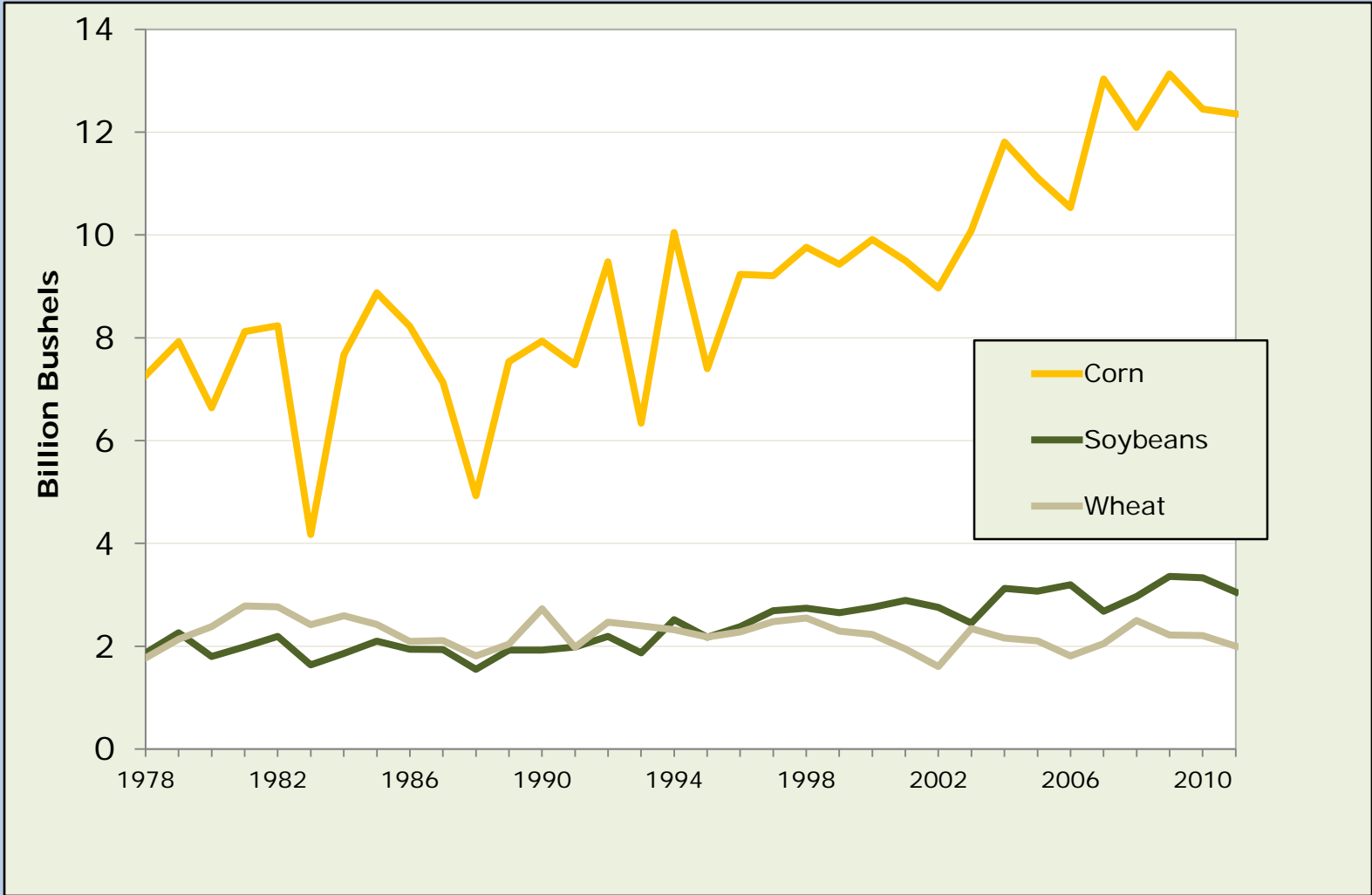
**Transportation Service Division**

**Transportation & Marketing Programs**



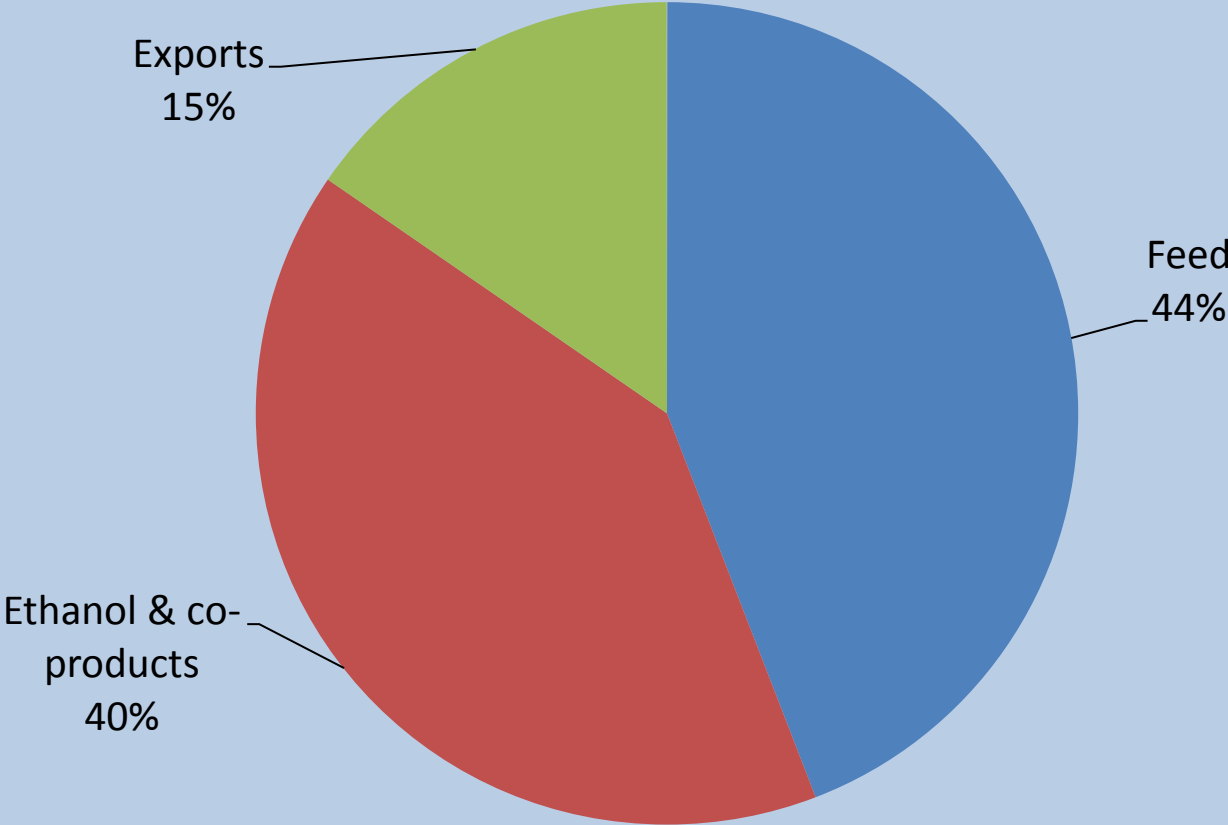
# U.S. GRAIN & OILSEED PRODUCTION



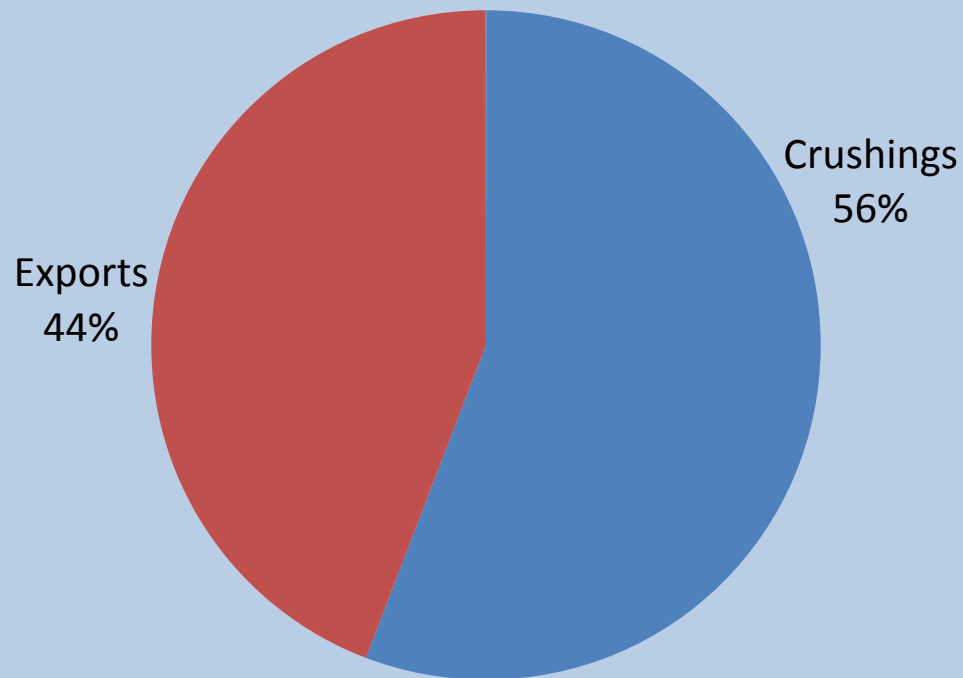


2001-11 average

# CORN MAJOR USES 2012/2013 MARKETING YEAR

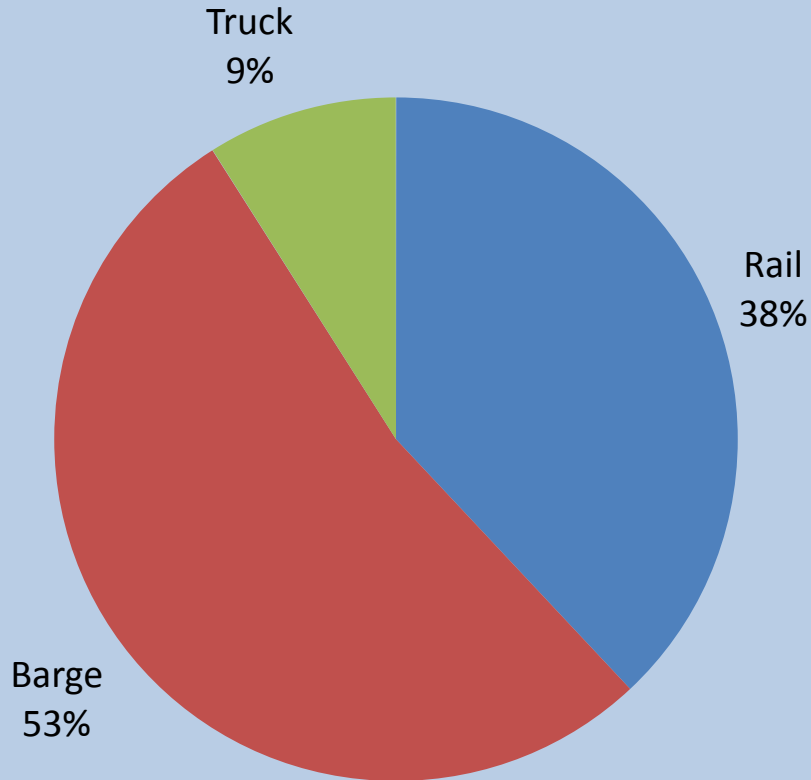


# SOYBEAN MAJOR USES 2011/2012 MARKETING YEAR

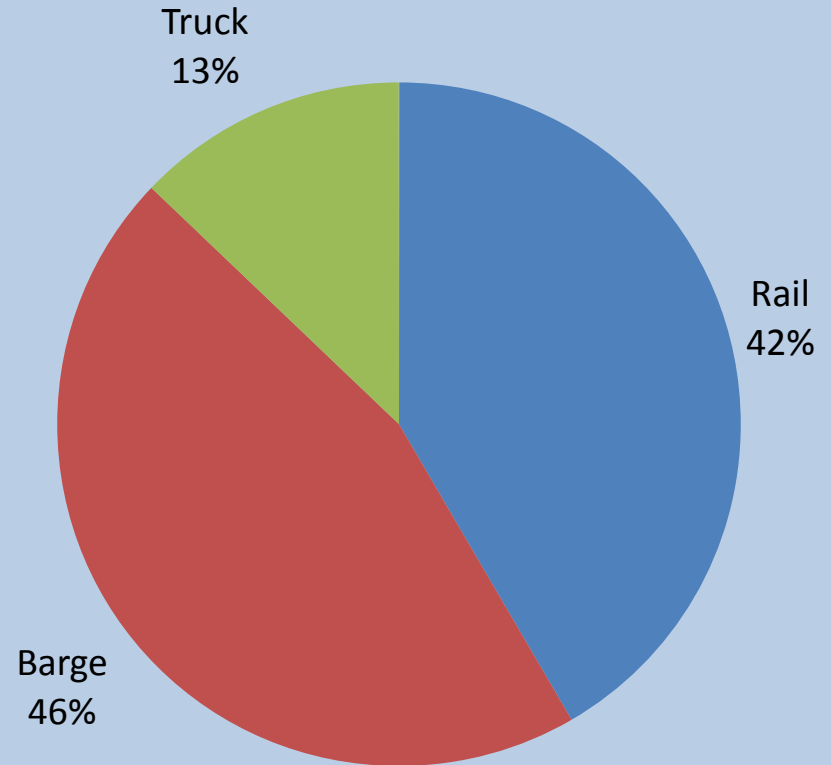


# EXPORTS BY MODE

## CORN

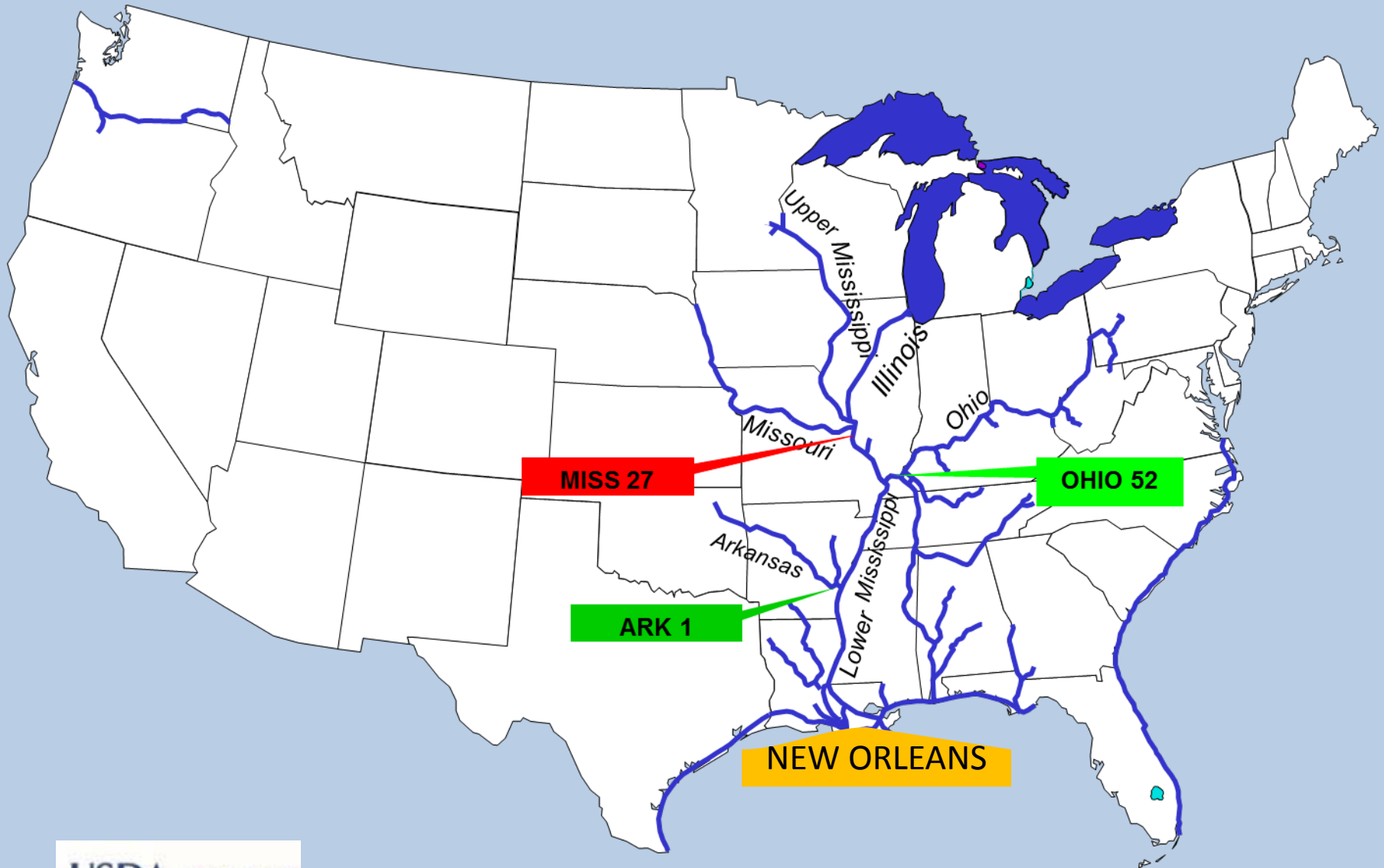


## SOYBEANS



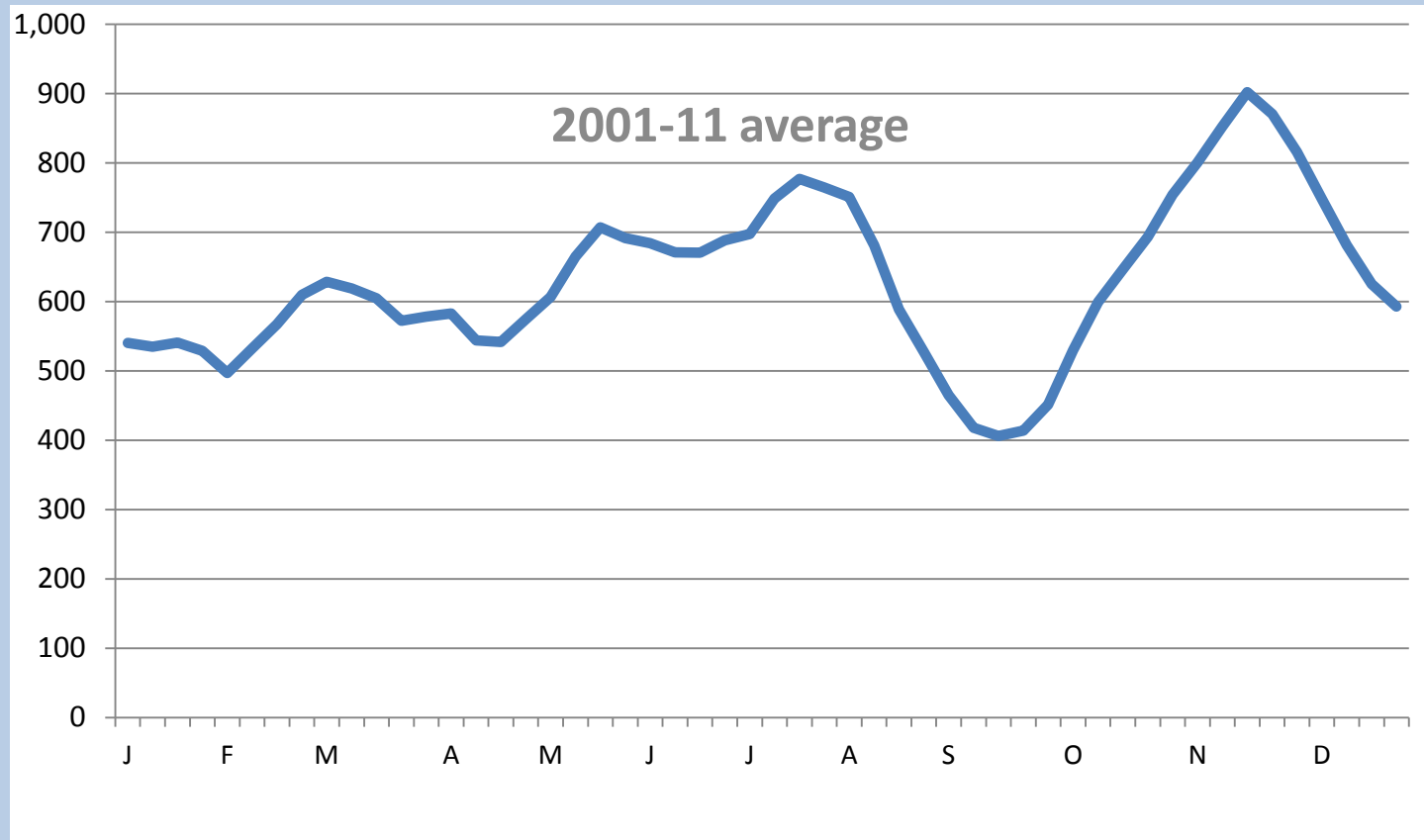
Average 2006 - 2010

# LOCKS USED TO MEASURE GRAIN BARGE VOLUMES



# WEEKLY LOCK TONNAGES

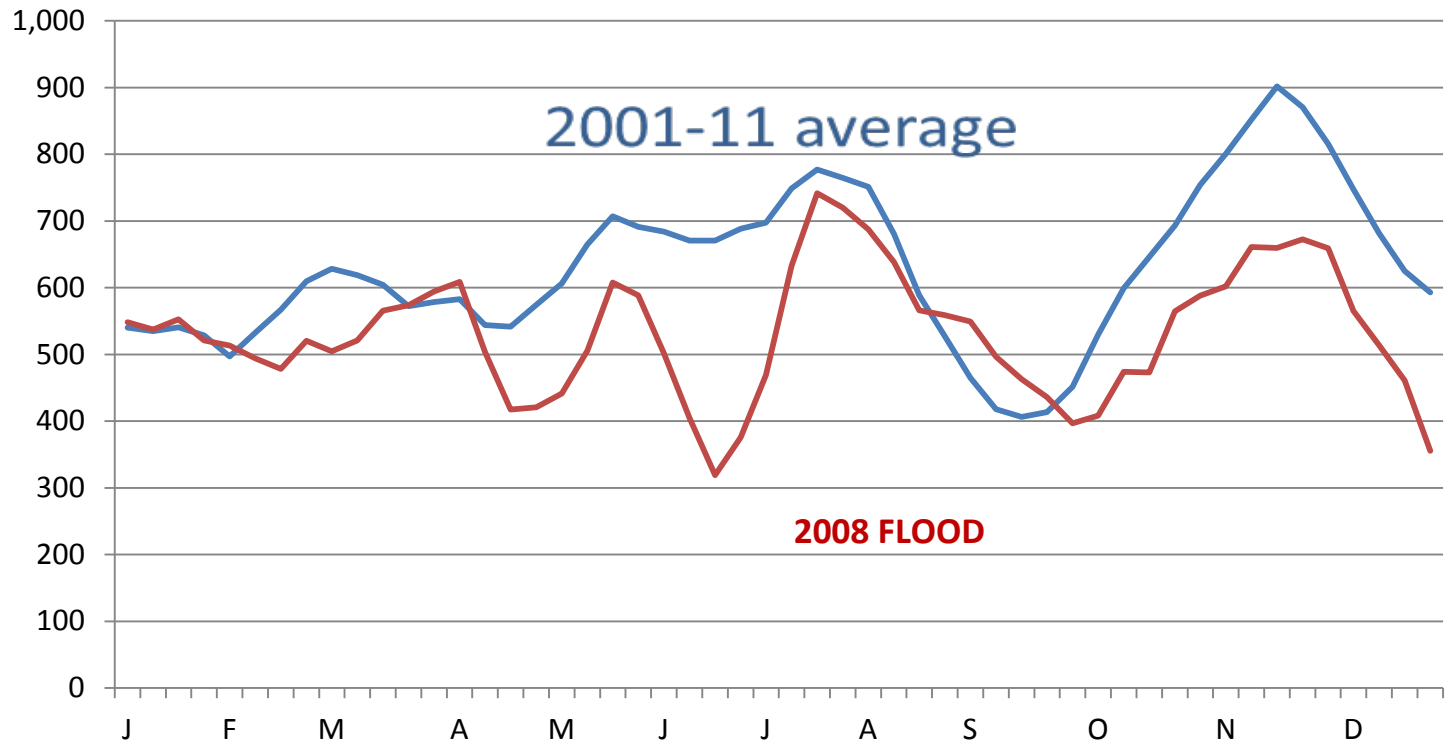
(in thousands)



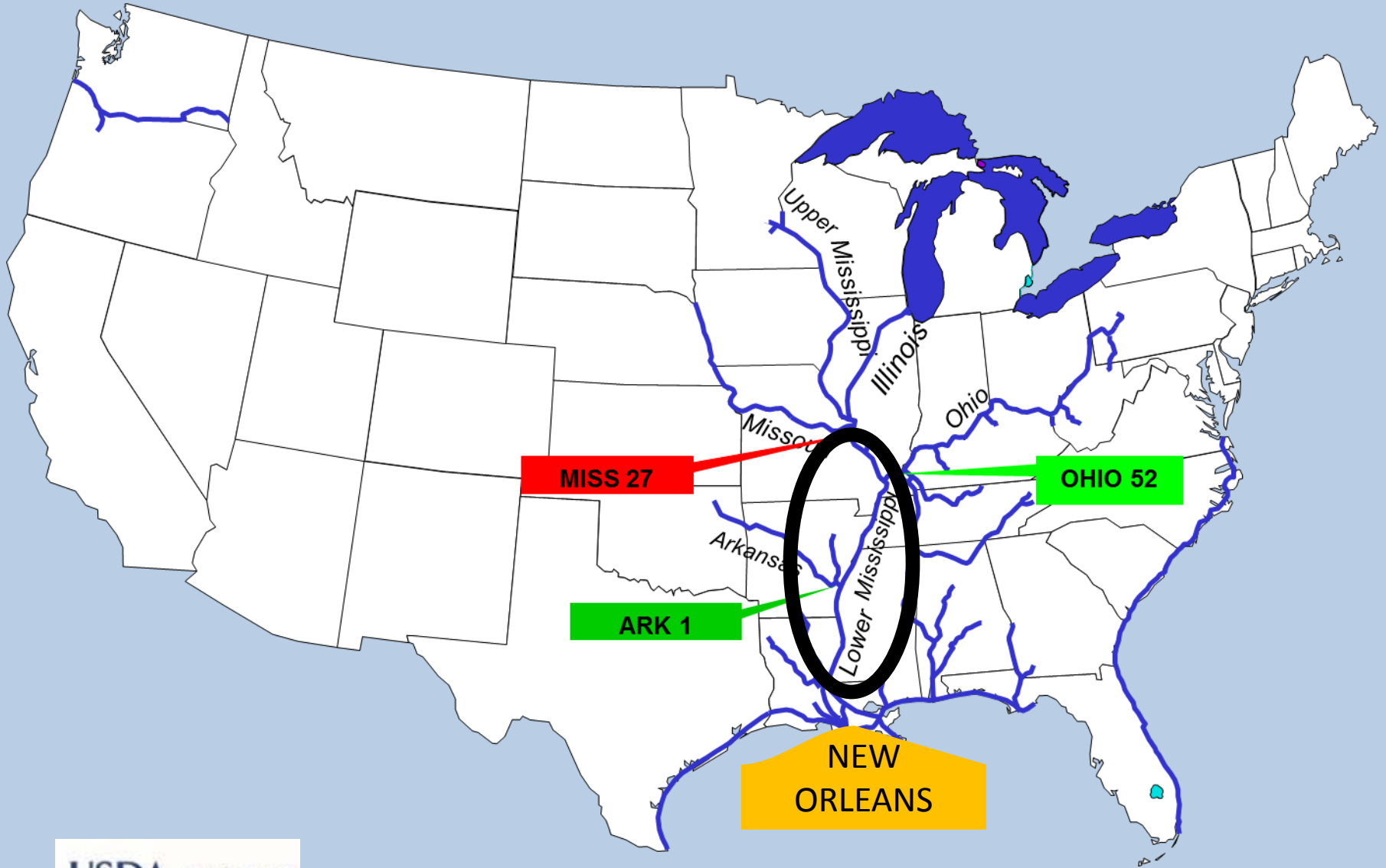


# WEEKLY LOCK TONNAGES

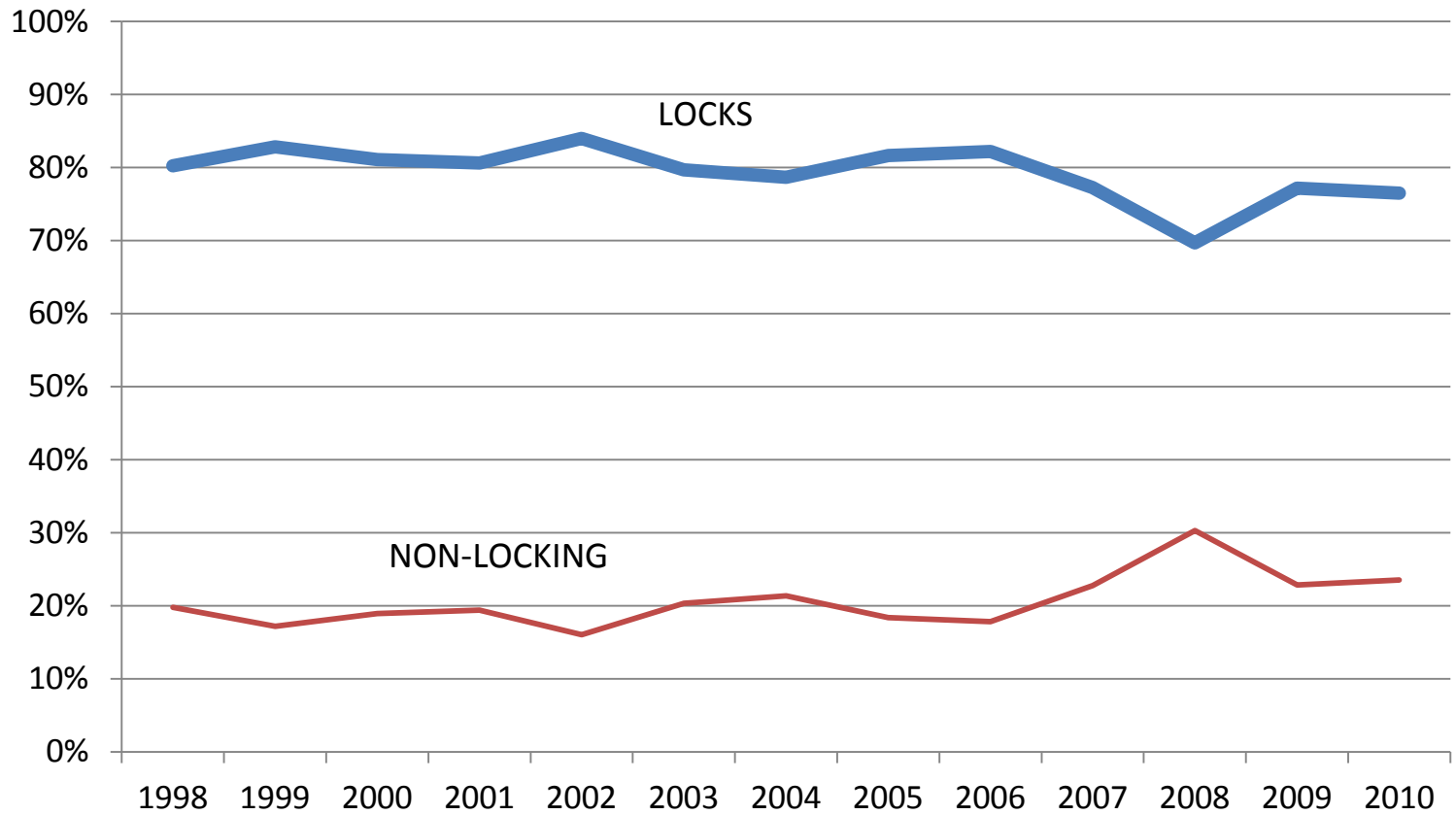
(in thousands)



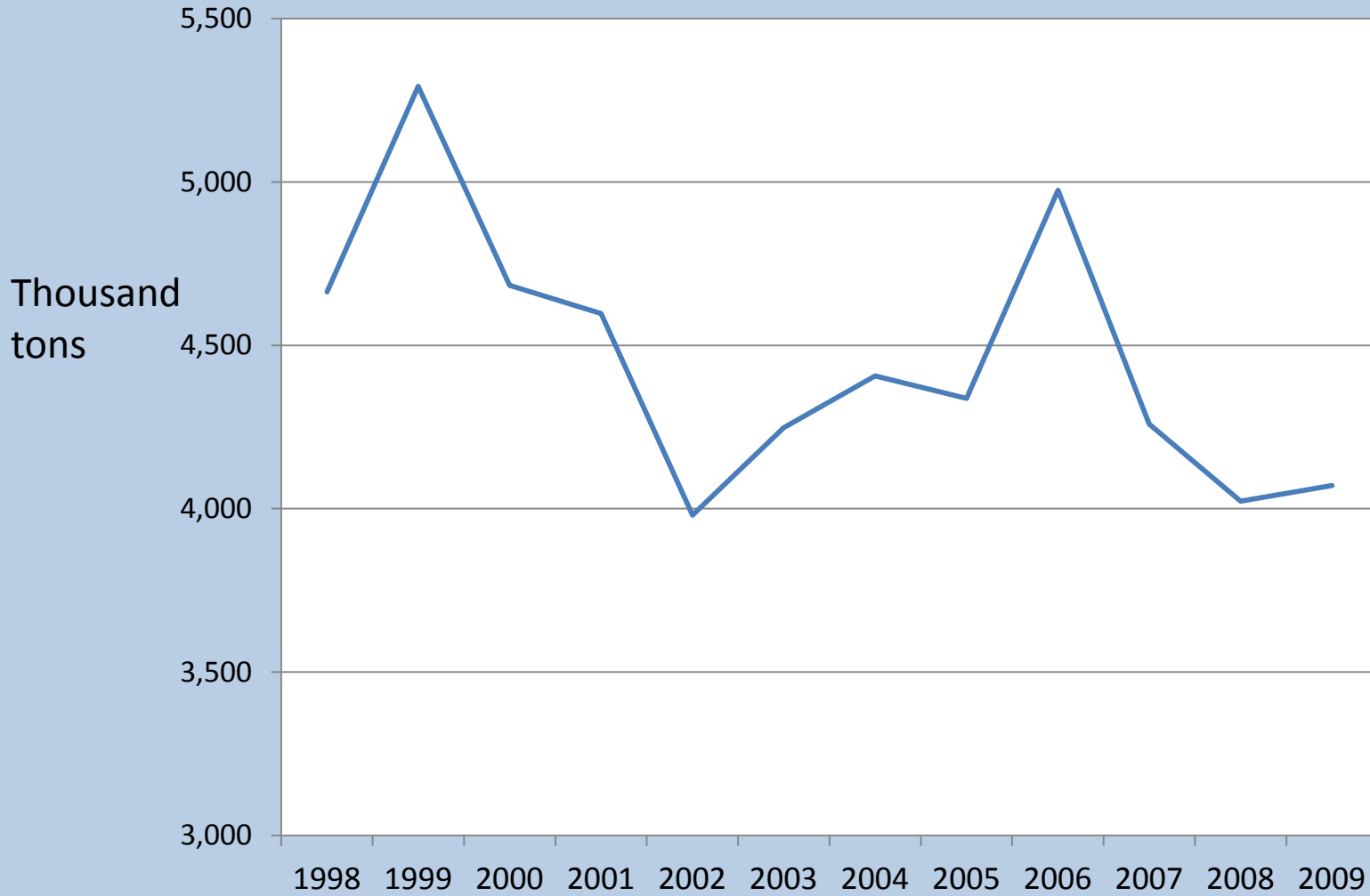
# NON-LOCKING SEGMENT OF THE RIVER



## PERCENT NEW ORLEANS BARGE DELIVERIES BY PORTION OF RIVER SYSTEM



# RAILCAR DELEVERIES TO LOWER MISSISSIPPI RIVER



Source: STB WAYBILL SAMPLE

	<b>GRAIN ARRIVING BY BARGE FOR EXPORT AT NEW ORLEANS</b>	<b>TOTAL U.S. EXPORTS</b>	<b>MISS. RIVER BARGES CONTRIBUTION TO TOTAL</b>
	million tons	million tons	
CORN	31	57	54%
SOYBEANS	18	38	46%
WHEAT	4	30	14%
TOTAL - 3	53	126	42%

**SOURCE: USDA-FAS, Army Corps of Engineers, Average 2006-10**

# DATA SOURCES

U.S. Army Corps of Engineers

OMNI – Operational and Maintenance  
of Navigation Information

Discontinued 1<sup>st</sup> Half 2011



# DATA SOURCES

U.S. Army Corps of Engineers

LPMS – Lock Performance Monitoring  
System

No Longer Reports Lock Tonnages by  
Commodity

USDA- AMS will continue to  
received Lock Data and report it  
weekly

[www.ams.usda.gov](http://www.ams.usda.gov)

