

TRANSCOM

Regional Transportation Management Coordination During Hurricane Sandy

June 11, 2013

Regional Integration

- 1 regional economy, 1 transportation system, and 1 customer base
- No Central Authority:
 - 16 highway/transit/police agencies in 3 States
- Benefits of Regional Operation Achieved Through TRANSCOM's Cooperative Model
- TRANSCOM Provides essential elements for regional coordination & decision making:
 - accurate data from ITS Technology
 - strong working relationships among agencies
 - both elements demonstrated during Sandy

TRANSCOM Functions

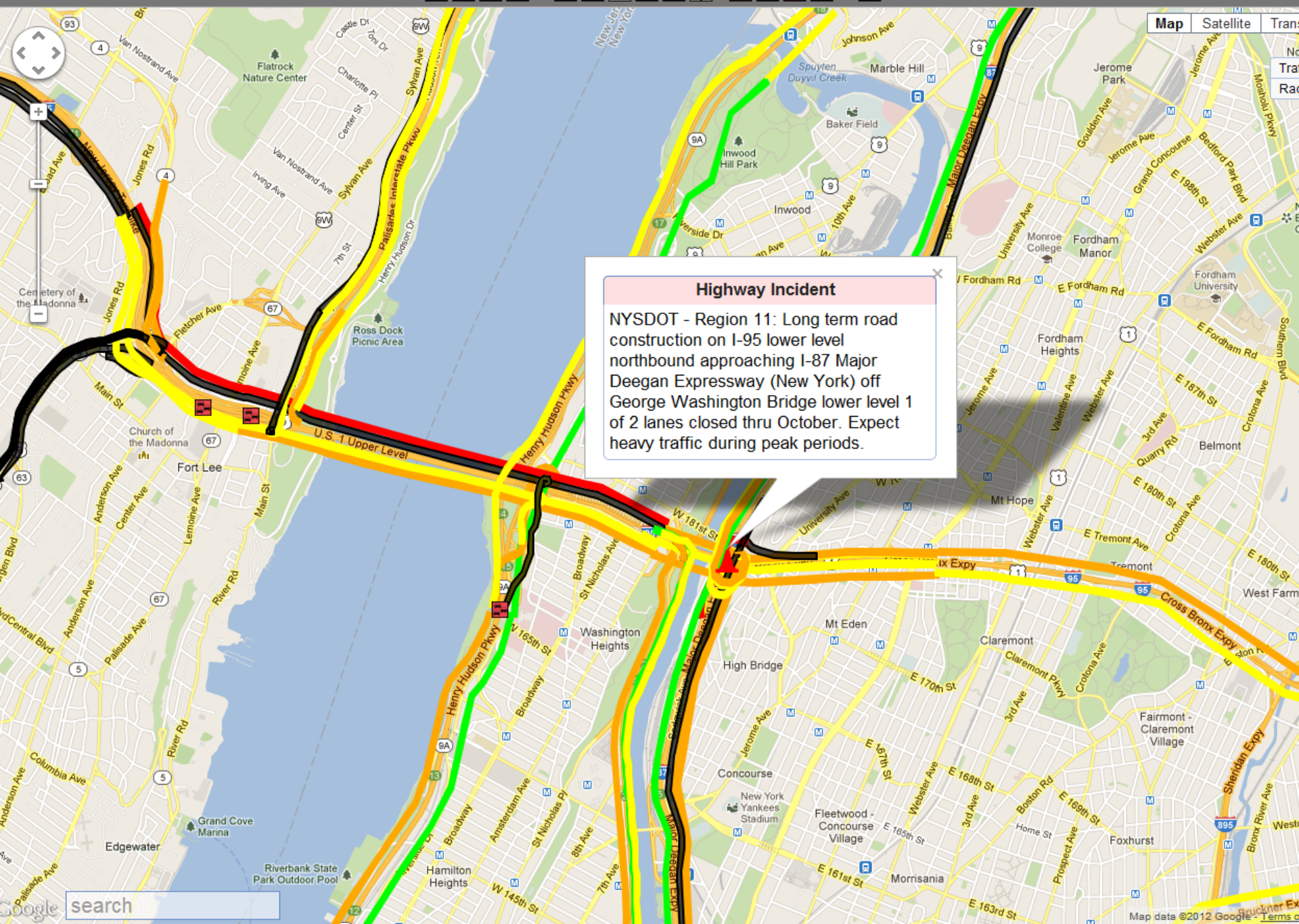
- **Primary Mission: Regional Operations**
 - **Regional Incident Management**
 - **Regional Construction Coordination**
 - **Regional Implementation of ITS Systems**
- **Additional Mission: Support of Information Traveler Information Systems**
 - **No TRANSCOM “Retail” Presence**
 - **Feed to 511 NY & NJ**
 - **Free data feeds (events & incidents)**
 - **Member agency VMS**
 - **Member agency widgets**

Regional Integration: OpenReach

- Web Based, Multi-Modal, Regional Inter-Agency Network
 - Links Dozens of Transportation & Police Op Centers
 - Provides Direct Access for Decision Makers
 - Integrates Data:
 - Incidents
 - Construction
 - Travel Times
 - Video
 - Member Agency VMS & HAR
- FHWA Funded

TRANSCOM OpenReach

- Four integrated systems on same platform
 - TRANSCOM – NY/NJ/CT Metro Region
 - NJ Center to Center – NJ State-wide
 - Philadelphia Region – PA/NJ
 - NY Statewide – being implemented with NYSDOT
- DHS Funded off-site housing – responsive to needs of public safety/emergency mgt.
 - System hardening ensures availability for situational awareness
 - Available during Sandy for TRANSCOM Op Center and the member agencies.



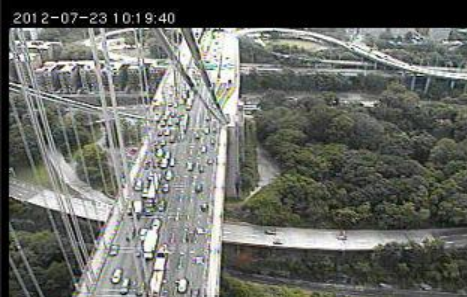


GWB NY BD Lower Lvl - NY Tower (East)

(74)

PA - GW Bridge

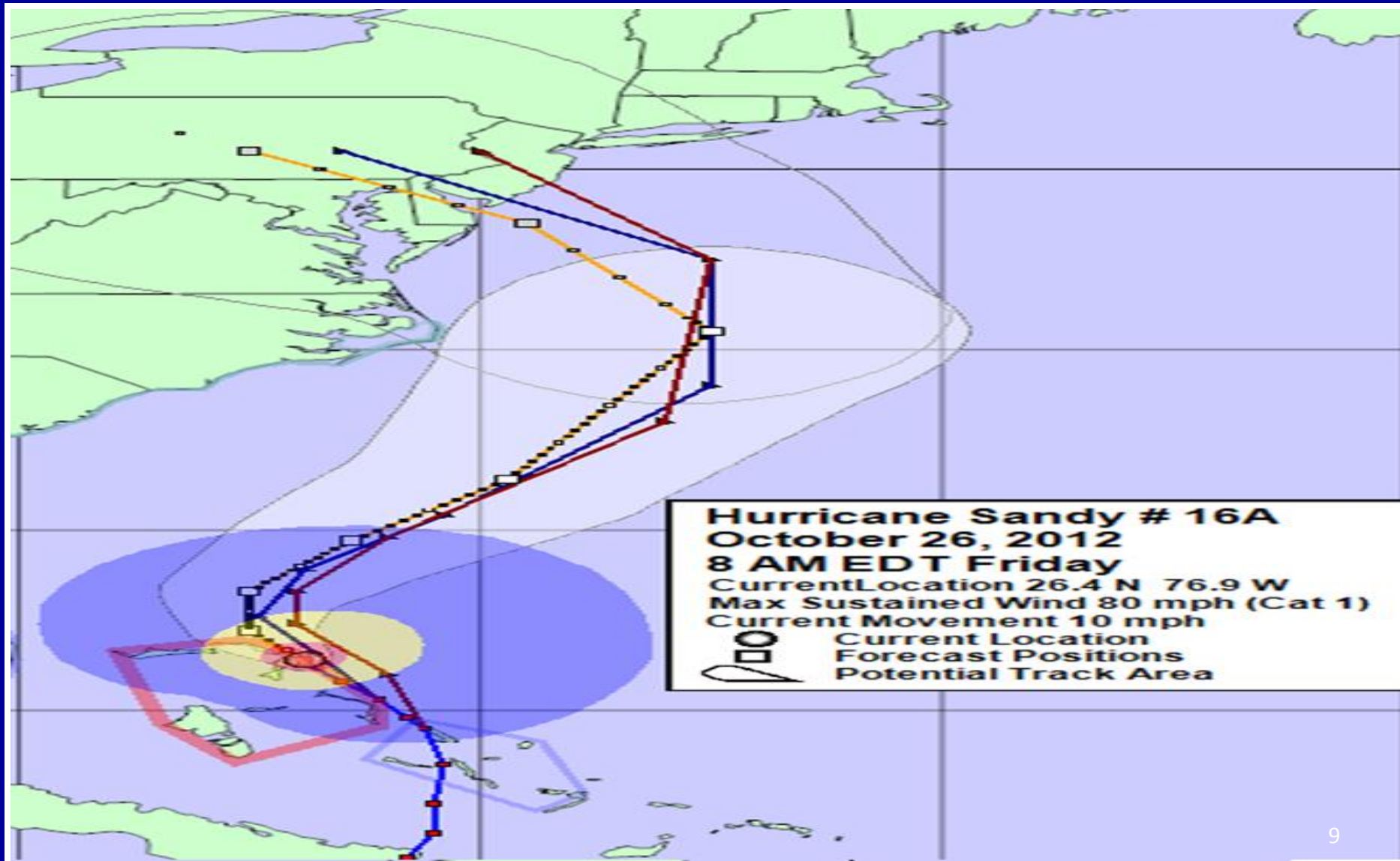
AHB 3 - 1 of 1



Hurricane Sandy

Before/During/After

Friday, October 26th, 8AM



Friday, October 26th 2:30PM

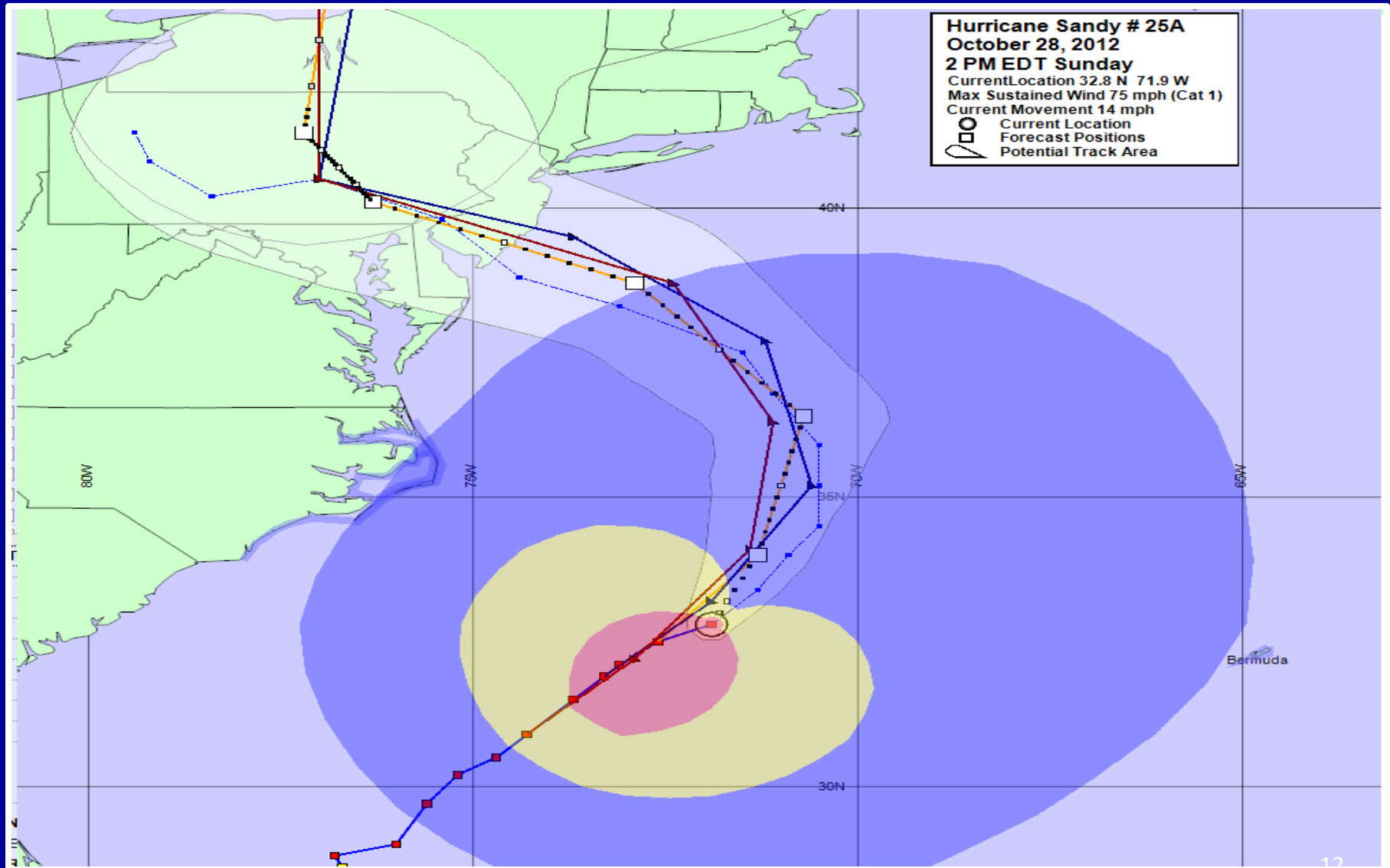
- 1st Regional Conference Call
- Review of Bridge and Tunnel Shutdown Protocol
 - Original document/discussions focused primarily on 50 MPH sustained
 - Updated version focused on tropical force 39 MPH sustained
- 75 Invitees on initial call
- (Next Call -- 4PM Sunday)

Hurricane Sandy Conference Calls:

Participants (members/non members)

- Burlington County Bridge Commission
- CTDOT
- Delaware River & Bay Authority
- Delaware River Joint Toll Bridge Commission
- Delaware River Port Authority
- DHS
- FEMA
- FHWA
- MTA Bridge & Tunnels
- MTA (Main Office)
- MTA Police
- NJDOT
- NJ State Police
- NJ Turnpike Authority
- NJ Transit Police
- NJ Transit Press Office
- NY Governor's Office
- NYC OEM
- NYC DOT
- NYC Police Department
- NY State Bridge Authority
- NYSDOT (Main Office)
- NYSDOT (Hudson Valley)
- NYSDOT (Long Island)
- NYSDOT (NYC)
- NY State Thruway Authority
- NYS Police
- PA NY&NJ (Main Office)
- PA NY&NJ (GW Bridge)
- PA NY&NJ (S.I. Bridges)
- PA NY&NJ (Holland Tunnel)
- PA NY&NJ (Lincoln Tunnel)
- SEMO (NY)
- TRANSCOM
- Westchester DOT
- Westchester County EOC

Sunday, October 28th 2PM



Sunday 7PM Conference Call- Agreed Upon Messaging

Roads/Bridges/Tunnels
Subject to Closure
Anytime

511 Floodgate/HAR: Attention motorists. Hurricane Sandy is expected to have a severe impact on the Tri-state region. Roadways, bridges and tunnels are subject to closure at any time. For your safety and the safety of emergency responders, motorists are strongly urged to avoid unnecessary travel at this time.

MTA System Wide Suspension at 7 P.M. Sunday, October 28th, 2012

 **New York City Subway**

 **Long Island Bus**

 **Bus Company**

 **New York City Transit**

 **Metro-North
Railroad**

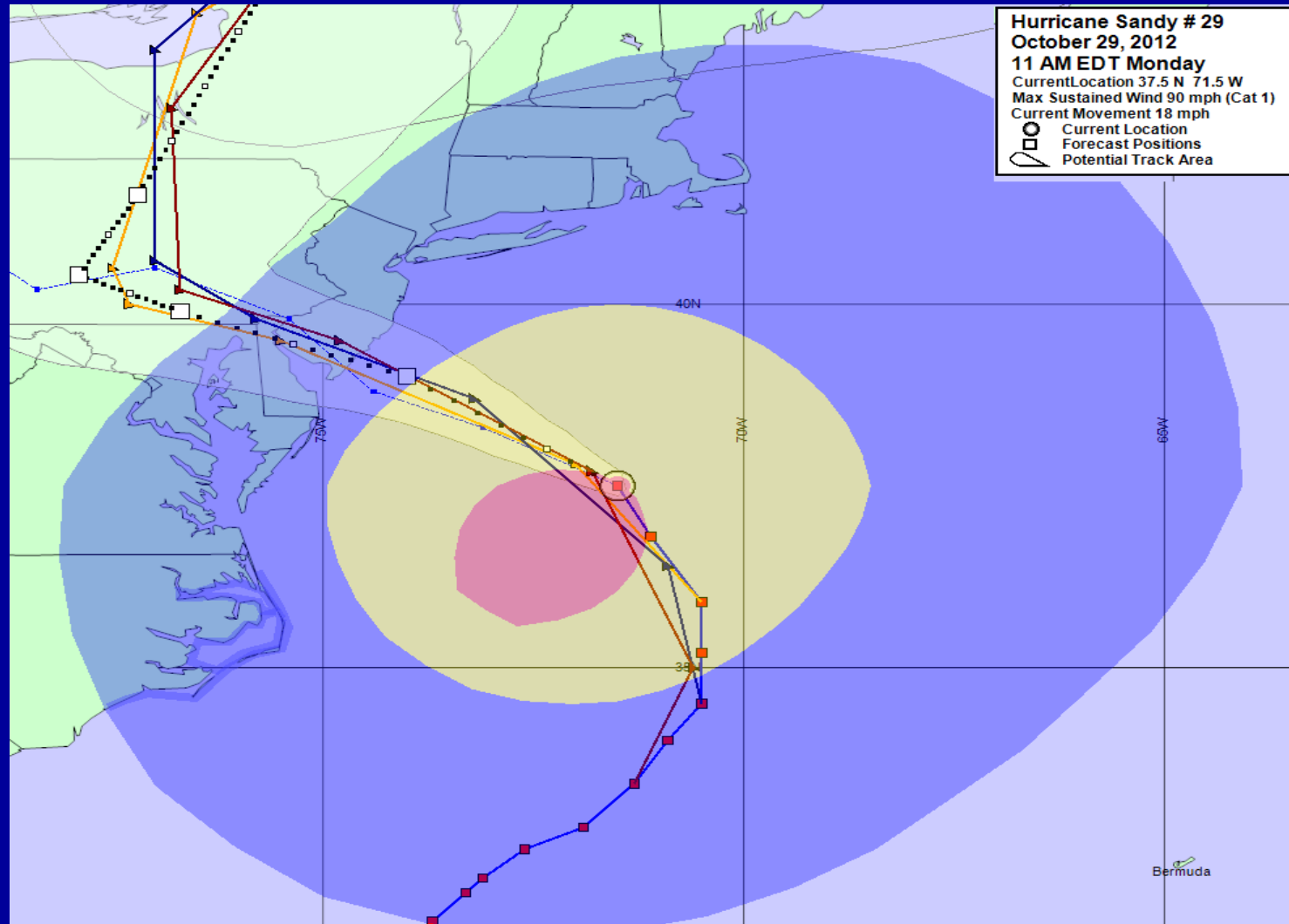
 **Long Island Rail Road**



New Jersey Transit Suspended System Wide at 2 A.M. Monday, October 29th, 2012



Monday, October 29th 11AM



TAPPAN ZEE BRIDGE CLOSED @ 4 PM

(soft closure by sign only - light traffic)

OCTOBER 29TH



MTA Bridge & Tunnels Wind Speed

@ 1600

VNB - 42 MPH w/65 MPH Gust

TNB - 41 MPH w/60 MPH Gust

BWB - 27 MPH w/53 MPH Gust

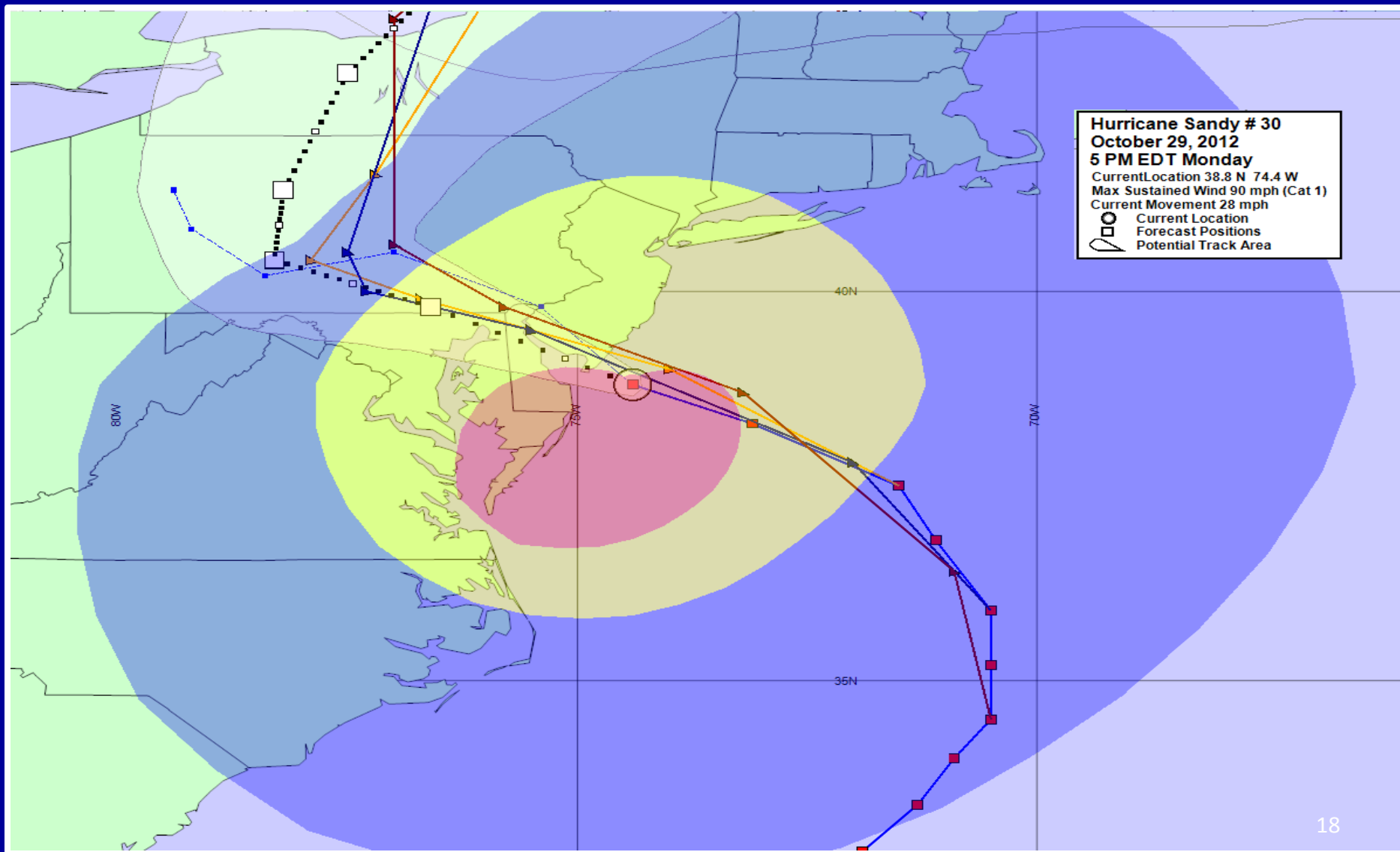
RFK - 32 MPH w/49 MPH Gust

CBB - 56 MPH w/71 MPH Gust

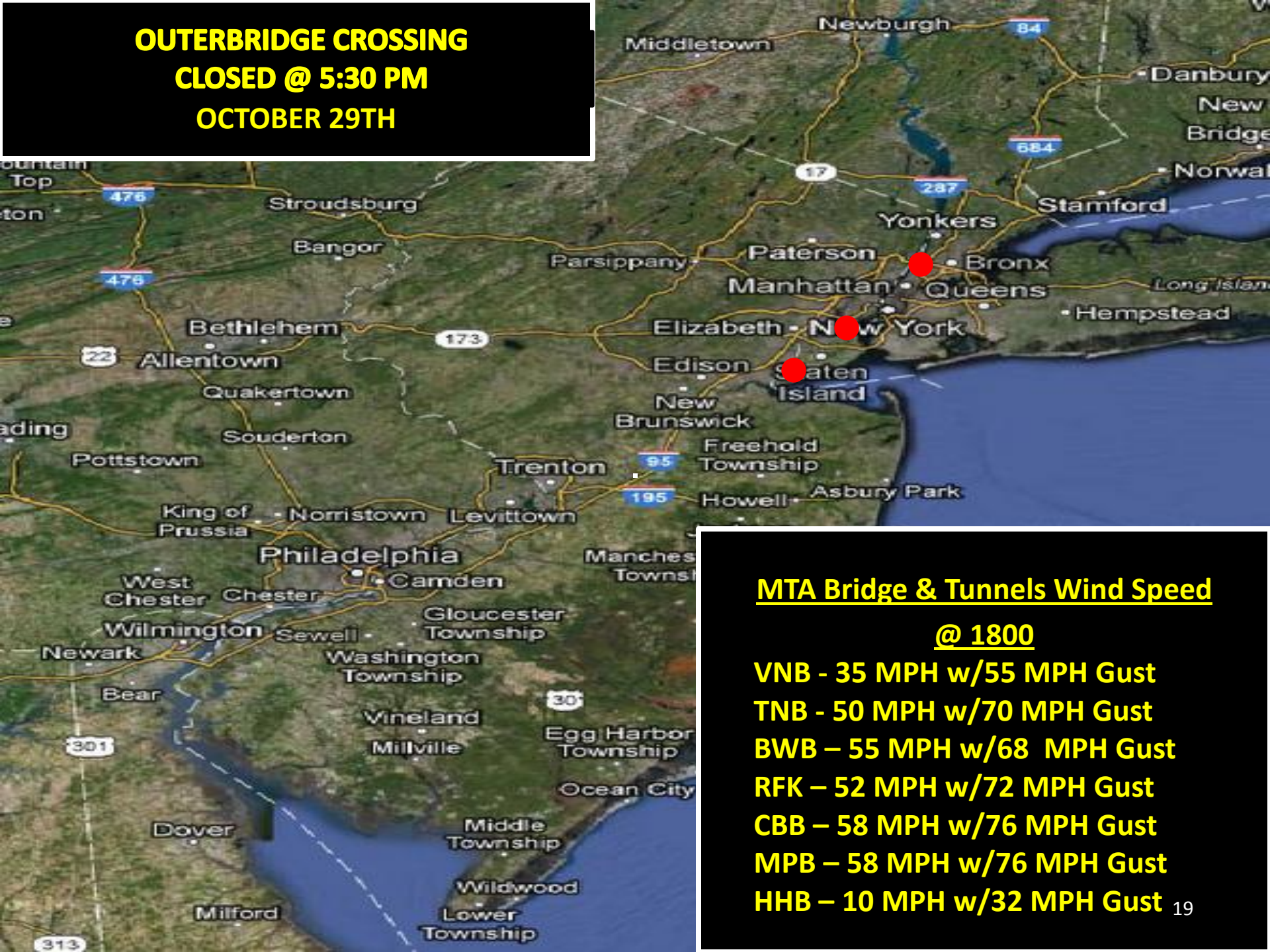
MPB - 56 MPH w/71 MPH Gust

HHB - 06 MPH w/22 MPH Gust

Monday, October 29th 5PM



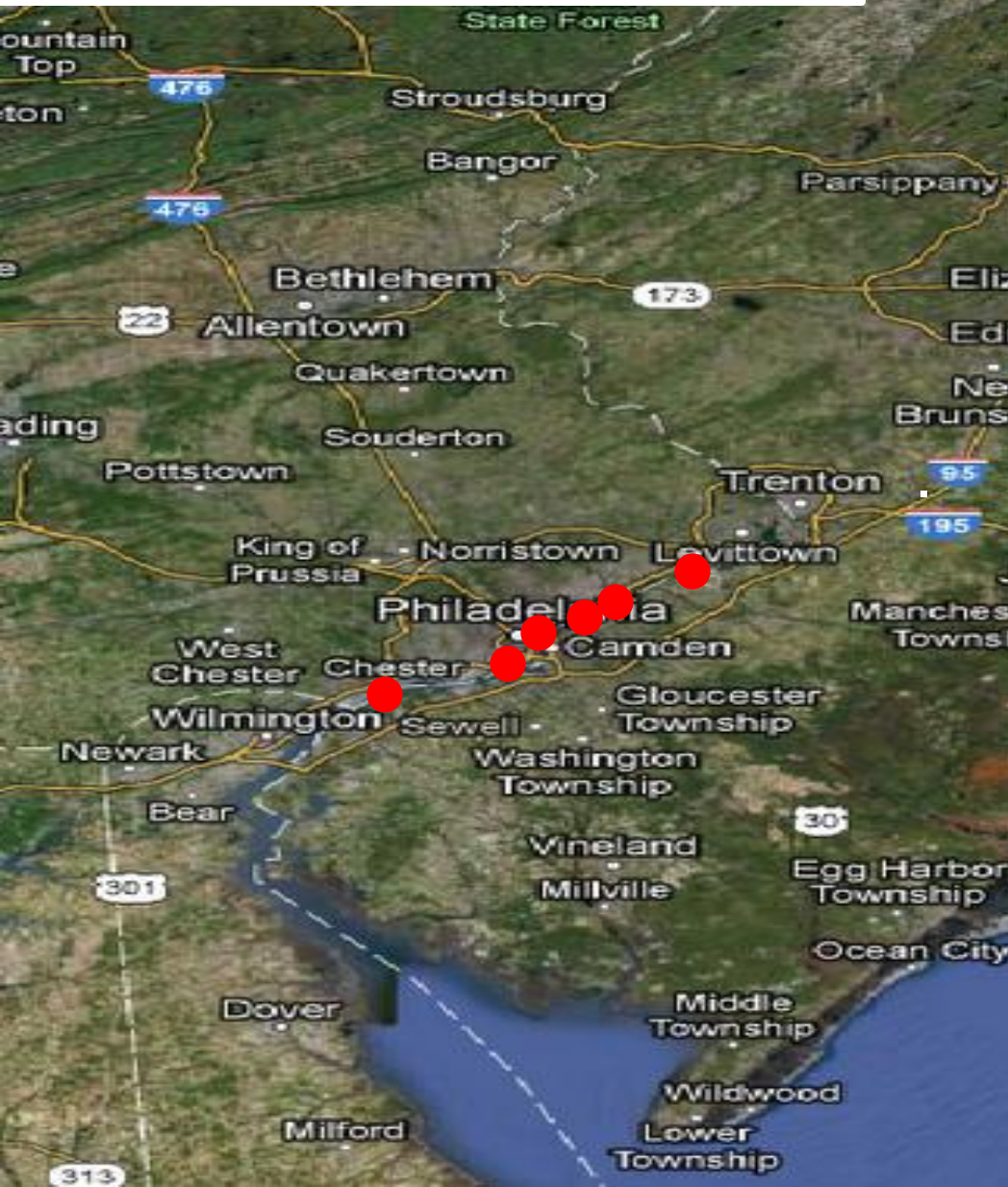
**OUTERBRIDGE CROSSING
CLOSED @ 5:30 PM
OCTOBER 29TH**



**MTA Bridge & Tunnels Wind Speed
@ 1800**

**VNB - 35 MPH w/55 MPH Gust
TNB - 50 MPH w/70 MPH Gust
BWB - 55 MPH w/68 MPH Gust
RFK - 52 MPH w/72 MPH Gust
CBB - 58 MPH w/76 MPH Gust
MPB - 58 MPH w/76 MPH Gust
HHB - 10 MPH w/32 MPH Gust**

**COMMODORE BARRY BRIDGE
CLOSED @ 7 PM
OCTOBER 29TH**

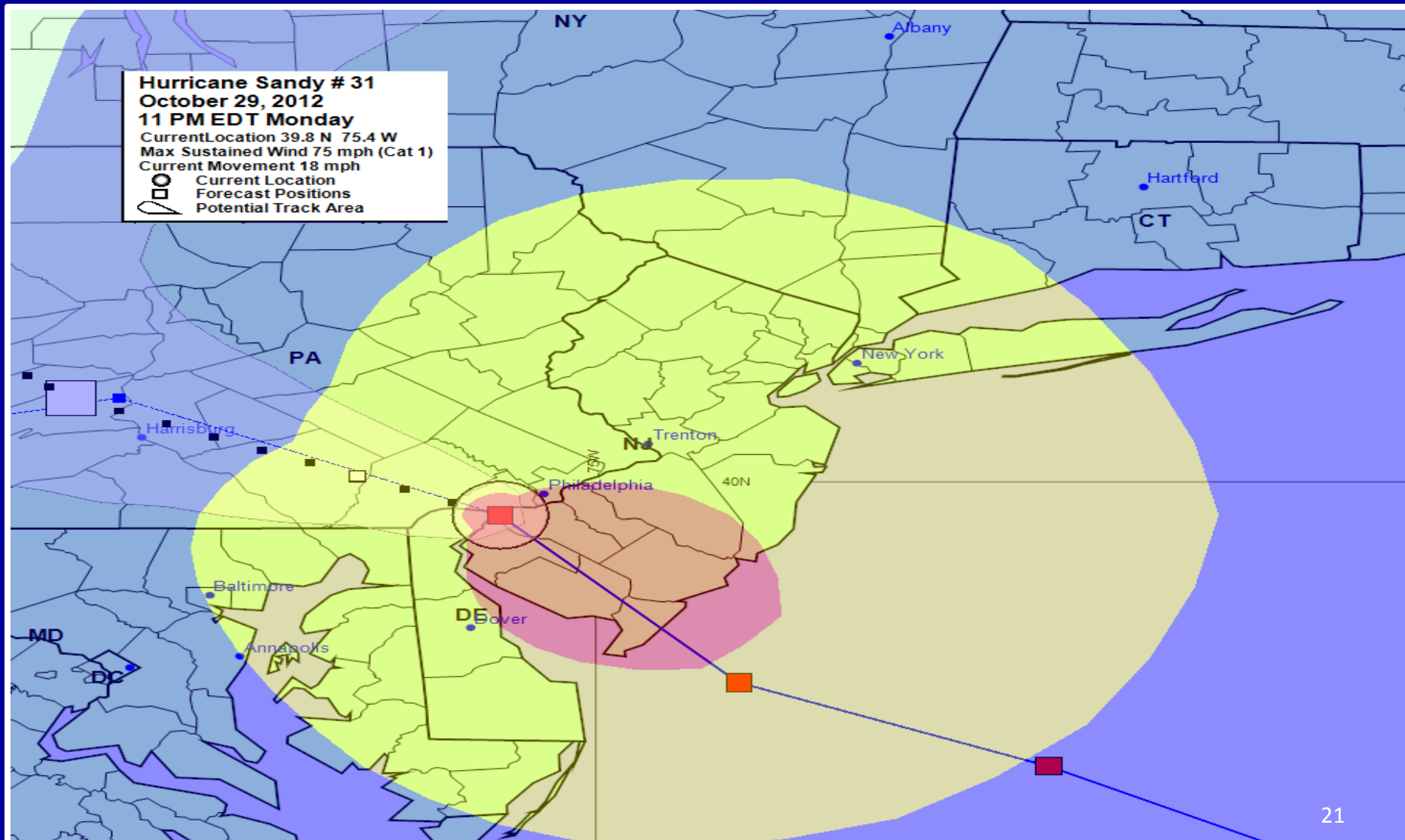


MTA Bridge & Tunnels Wind Speed

@ 1930

**VNB – 57 MPH w/79 MPH Gust
TNB - 58 MPH w/77 MPH Gust
BWB – 62 MPH w/75 MPH Gust
RFK – 47 MPH w/76 MPH Gust
CBB – 62 MPH w/75 MPH Gust
MPB – 62 MPH w/75 MPH Gust
HHB – 21 MPH w/50 MPH Gust**

Monday, October 29th 11PM





MTA B&T Hugh L. Carey Tunnel₂₂



Lower Manhattan



Battery Park Underpass



Parking Garage in Lower Manhattan



HOBOKEN PATH STATION



MTA NYC Transit Subway South Ferry Station

Conference Calls - Recovery

- Started Wednesday Morning
- Transit Agencies Needed on Call
- New Sets of Challenges

CARS HOV 3 + ONLY
THURS & FRI 6A – 11:59P



HENRY HUDSON BRIDGE



R.F.K. BRIDGE to Manhattan

LINCOLN TUNNEL



ED KOCH BRIDGE



**BROOKLYN, MANHATTAN &
WILLIAMSBURG BRIDGES**



HT, BBT, QMT
CLOSED FLOOD DAMAGE

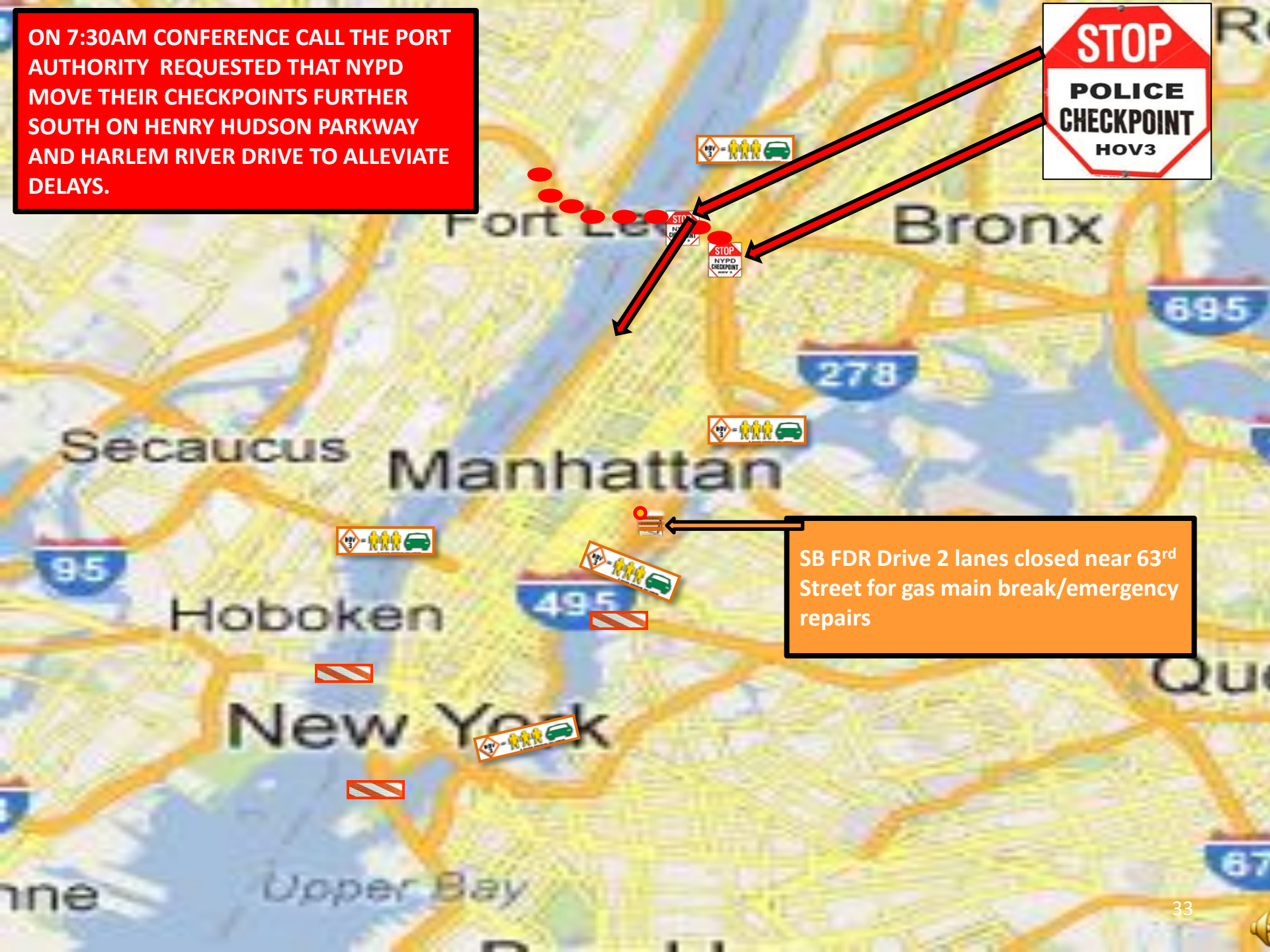
HOW TO BEAT HOV 3

3RD AVENUE BRIDGE

GEORGE WASHINGTON BRIDGE



ON 7:30AM CONFERENCE CALL THE PORT AUTHORITY REQUESTED THAT NYPD MOVE THEIR CHECKPOINTS FURTHER SOUTH ON HENRY HUDSON PARKWAY AND HARLEM RIVER DRIVE TO ALLEVIATE DELAYS.



SB FDR Drive 2 lanes closed near 63rd Street for gas main break/emergency repairs

Fuel Issues

Connecticut DOT:

We need to discuss VMS language for NY and NJ residents coming into CT for gas. I-95 was backed up today and we had numerous complaints come into the DOT and the EOC regarding this issue.

We might need to discuss this with Transcom. They need to get gas out of state to ease congestion. A lot of folks already are going to Fairfield County to find gas.

**FREE SHUTTLE BUS
To NEWARK PENN,
LOWER MAN & BUS TERM**

FLOODGATE MESSAGES

Liberty State Park: (revised – new times for ferry - 110712) (1&9, 1&9T, 21, 22, 78, HT, Jersey City ---would look to remove: NJ Tpk, NJT HBE)

Attention motorists heading to lower Manhattan. As a result of the ongoing repairs to the transportation network and in an effort to reduce traffic congestion, NJ Transit, working with its regional partners, is running a free bus to ferry service. Passengers can park for free and catch the bus at the Hudson Bergen Light Rail's Liberty State Park Station. This bus will connect to a free ferry service at the Liberty State Marina that will take passengers to Battery Park. Ferry service between the Liberty State Park Marina and Battery Park runs from 6am to 10am, 1pm to 2pm and 4pm to 8pm. For more information visit njtransit.com

**511NJ SEVERITY ALERT MESSAGE WITH LINK TO NJ
TRANSIT PRESS RELEASE TO SUPPORT
SHUTTLE BUS LOCATIONS**



Hurricane Sandy - Challenges

Twitter

- Planned Bridge Closures

- Modifications to Rules

Press Conferences

- Verifying What Was Stated Would Occur

Facilitating Movement of Recovery Vehicles

- Routing

- Tolls/No Tolls

- HOV-3

NYC Marathon (cancelled)

- Rerouting recovery vehicles around Verrazano closure

What Worked

- Regional Conference Calls:
 - Began: Friday (10/26) – 2:30pm – 75 invitees
 - Ended: Monday (11/5) – 2:30pm – 133 invitees
- Regional Conditions Reports from OpenReach
 - Agencies wanted text
 - Continued through 11/9
 - **FDNY: “Your TRANSCOM reports were hugely valuable to our operations in the aftermath of the storm. New York’s Bravest thank you and the TRANSCOM team. We were a little better and a little safer because of your road conditions reports.”**

What Worked (Cont.)

- Forum for Information Exchange between Calls
 - Shared Wind Speeds Provided by Agencies as Storm Approached
 - Review of VMS/HAR/511 Floodgate Messages
 - Handle Conflicting Reports
 - Means to Share Breaking News – blast emails:
 - Bridge and road closures
 - Announcement (and termination) of HOV Rules
 - Partial Restoration of Rail Services
- Working Relationships Further Strengthened

Status of Systems During the Storm

- Open Reach System Continued to Function Throughout the Storm:
 - Enabled continuous feed to and from the agencies.
 - Enabled continuous feed to 511NJ & 511NY
 - Enabled regional conditions reports
 - Continued to keep agencies which lost power advised.
 - Continued to run off building power.
 - Back up server ready at NJ State-wide Center.
 - Back up server ready from disaster recover site.
- Many Probe Data Field Sites and VMS Were Down