

# Resiliency Planning for Ports

Kathy Moore, CAPT USCG  
CG Sector Delaware Bay

# Resiliency Planning

- Adds capacity & capability
- Enables Ports to:
  - Maintain operations
  - Quickly restore operations
- Key: Acceptable Level of Service
- Two Areas
  - Prevention
  - Recovery



# Planning Assumptions

- Find your ‘Tolerable Floor’
  - Limit of disruption you can tolerate
  - Length of disruption you can tolerate
- Ideally this is a matrix
- Account for seasonality or other features



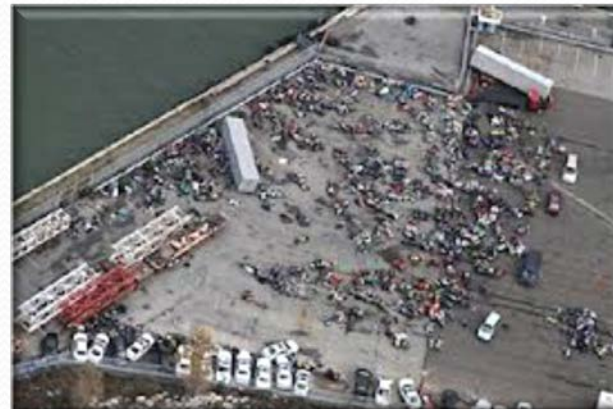


# Assessing Risk

Risk = Threat Probability \* Consequence

## 1. Identify Threats

- Weather
- Infrastructure
- Human Incident
- Pandemic/Quarantine
- “Other” Disruption





# Assessing Risk

2. Research and Assign Probabilities
  - Probability is a distribution
    - 2 a. Assume the probabilities are wrong...
      - \*\*Identify information gaps



# Assessing Risk

## 3. Estimate Consequences

Include certain stakeholder impacts

Include the positive impacts

Consider interdependencies





# Devise Resilience Strategies

- Protect (Prevention)
- Duplicate (Recovery)
- Move (Prevention and Recovery)

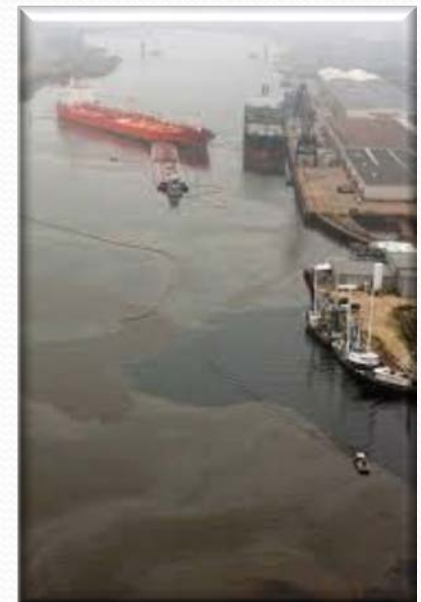


# Evaluate Strategies & Prioritize

- Investment
- Time to implement
- Prioritize complimentary and nested strategies

Review/Revise regularly

- Challenge Planning Assumptions
- Incorporate new business/trade patterns





# Resilient Ports

- Serve the nation
- Great business
- Need a resilient workforce

