

Resilient PNT using eLoran during GNSS Denial

Mr Chris Hargreaves

General Lighthouse Authorities of the United Kingdom and Ireland

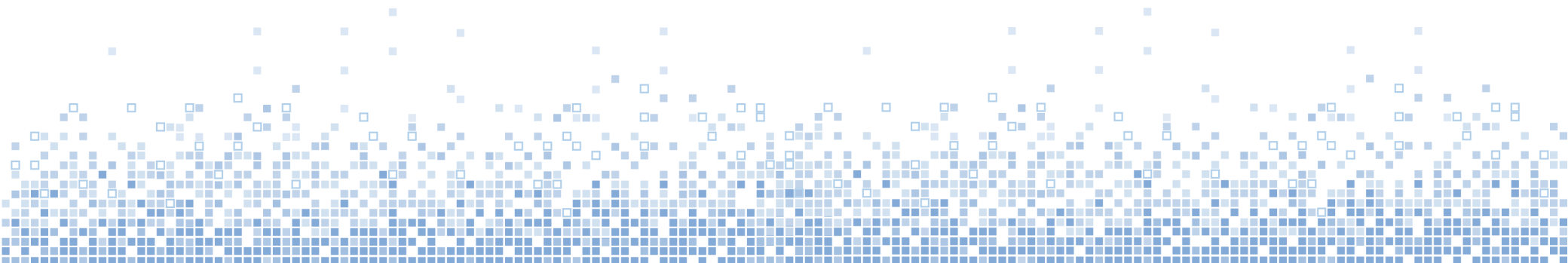
26th June 2014



Need for resilient PNT in e-Navigation

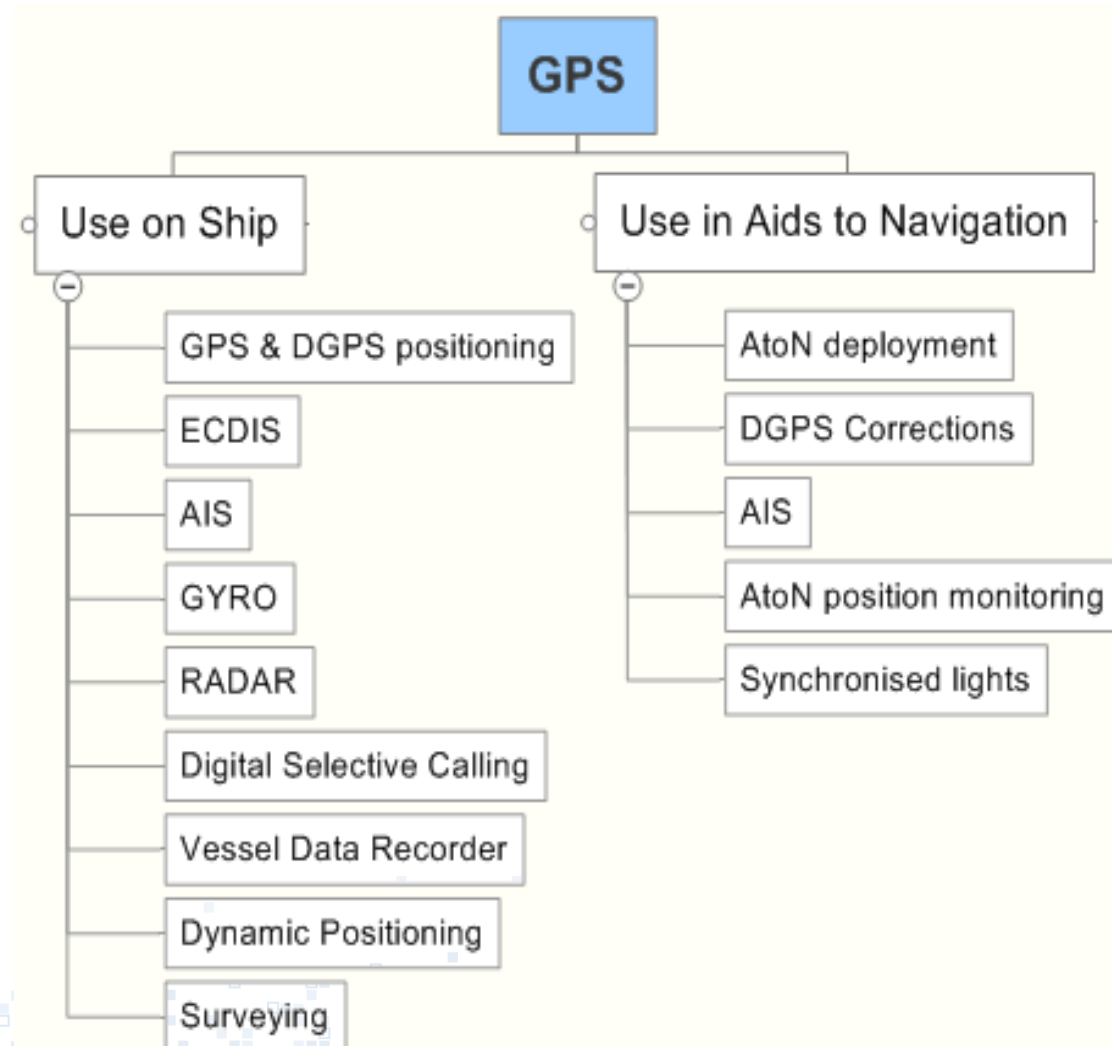
IMO Maritime Safety Committee has stated:

“e-Navigation systems should be resilient and take into account issues of data validity, plausibility and integrity for the systems to be robust, reliable and dependable. Requirements for redundancy, particularly in relation to position fixing systems should be considered.”



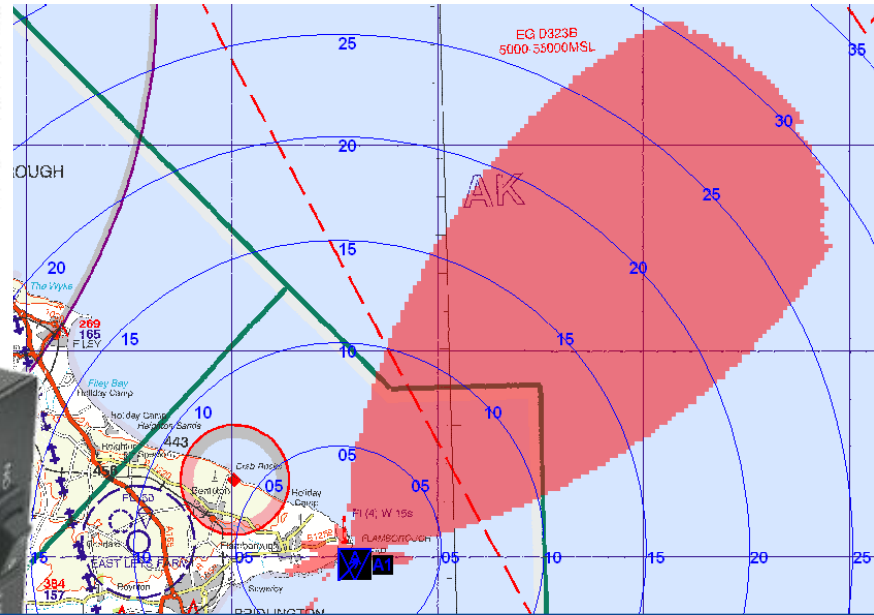
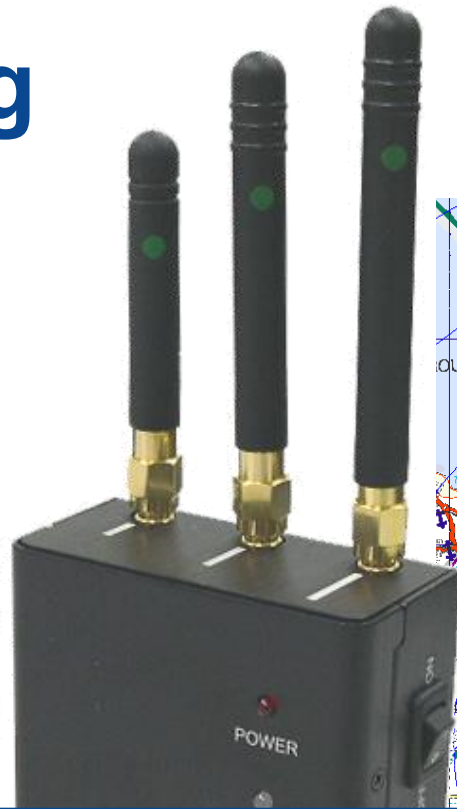
Use of GPS

- GPS feeds most shipboard equipment
- This equipment fails if GPS is lost
 - Alarms sound on Bridge
 - Loss of Navigational awareness
 - Danger to vessels and Navigators!



GPS Jamming

- Sold online
 - 'Personal Privacy Device' - PPD
 - \$20 and upwards
- 30km range?



Web [Images](#) [Videos](#) [Maps](#) [News](#) [Shopping](#) [Mail](#) [more](#) ▼ [Web History](#) | [Search settings](#) | [Sign in](#)

GPS + jammer

Google [Advanced Search](#)

Search: the web pages from the UK

Web [+ Show options...](#) Results 1 - 10 of about **175,000** for **GPS + jammer**. (0.16 seconds)

[On-Line Shop](#) [www.Direct-Gadget.com](#) Worldwide Shipping Hot Sales Directly from the manufacture

[GPS & GSM Blocker](#) [www.thejammerworld.com/jammer](#) Professional **GPS & GSM** Blocker Manufacturer from China. Inquiry Now

Sponsored Links

Sponsored Links

[Cell Phone & GPS Blocker](#)
Block GSM, 3G, CDMA, **GPS** and more.
Use coupon code WINTER for 10% off!
[www.xjammers.com](#)

eLoran

- Signal in space
 - High Power (200kW – 1MW)
 - Low Frequency (100 kHz)
 - Pulsed
- Precise synchronisation, locked to UTC
 - 3x Cs. clocks
- Loran Data Channel
- Positioning and Timing Backup to GPS

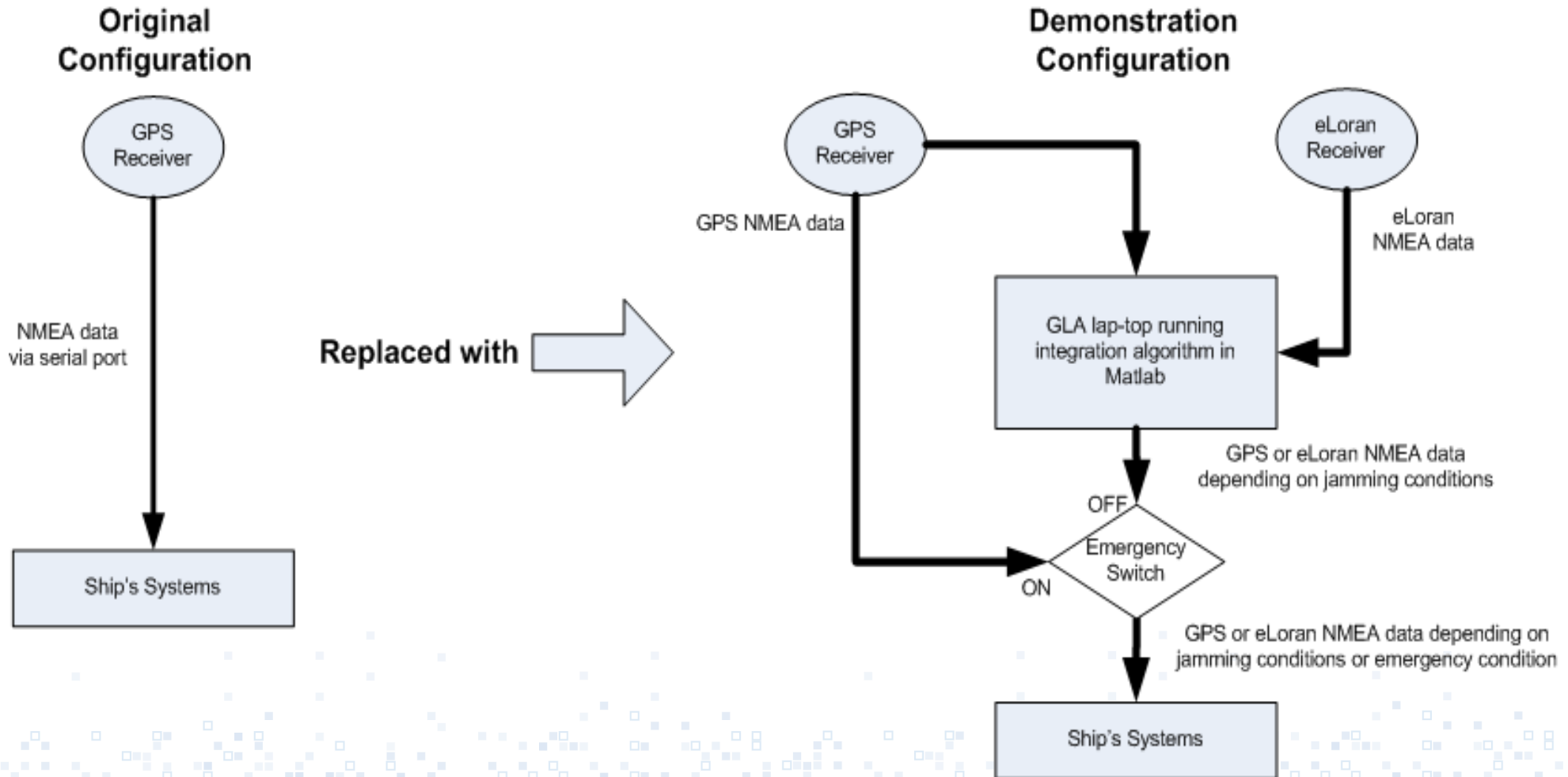


Jamming Trial onboard THV Galatea



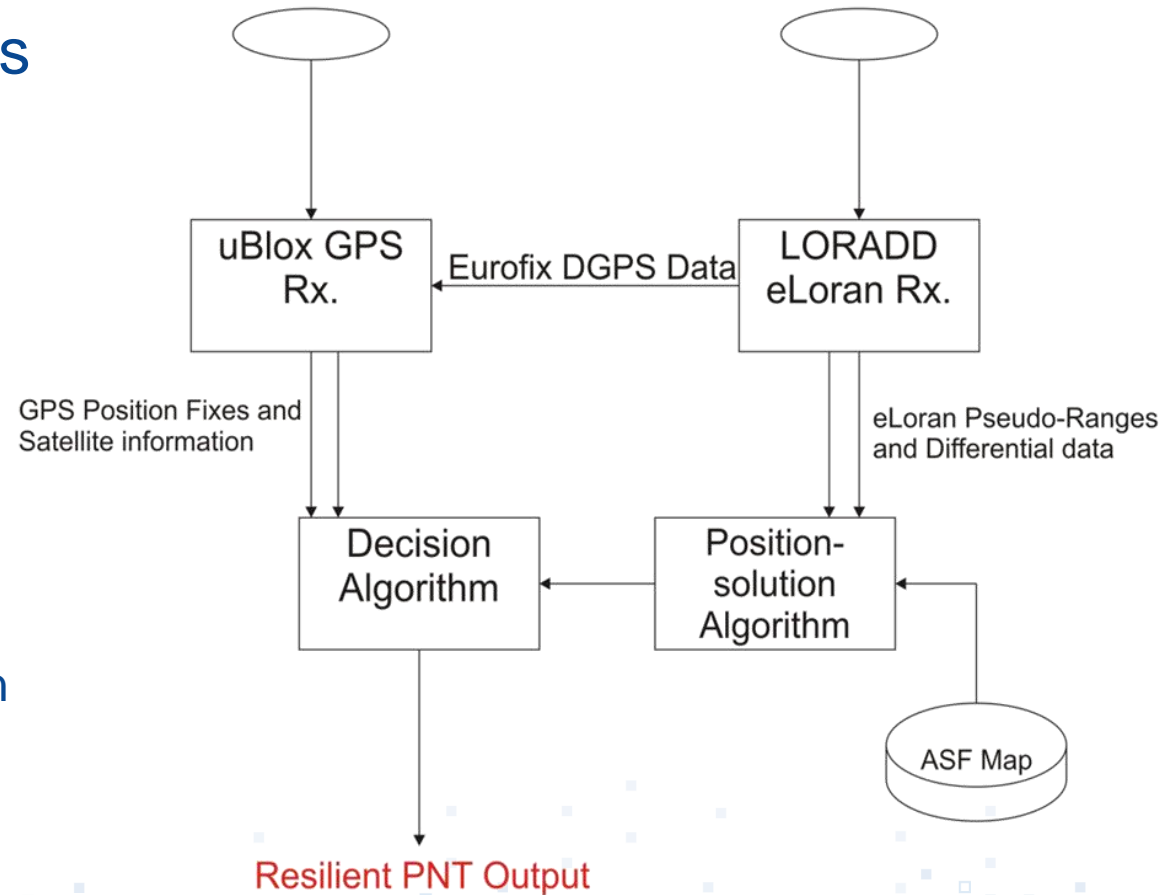
- Trinity House Flagship Vessel
 - 5 years old
 - Sophisticated electronic Bridge
- Military (DSTL) Operated Jammer for demonstration
 - Designated Jamming Zone
 - 14 weeks notice

Modifications to THV Galatea



Resilient PNT Data Processor : Implementation

- eLoran with GPS Provides Resilient PNT
 - Complementary
 - Independent
 - Different Failure-Modes
- Keep eLoran and GPS Separate
 - Either / Or switch
 - Keep Independence of eLoran



Decision Algorithm

■ Input

- eLoran Data (position fix; HPL; RAIM; Integrity warnings)
- GPS Data (position fix; HPL; Integrity warnings; Jamming Detection)

■ Is GPS OK?

- Valid fix; HPL<25m; no Warnings; no Jamming?
- Use GPS as R-PNT data source

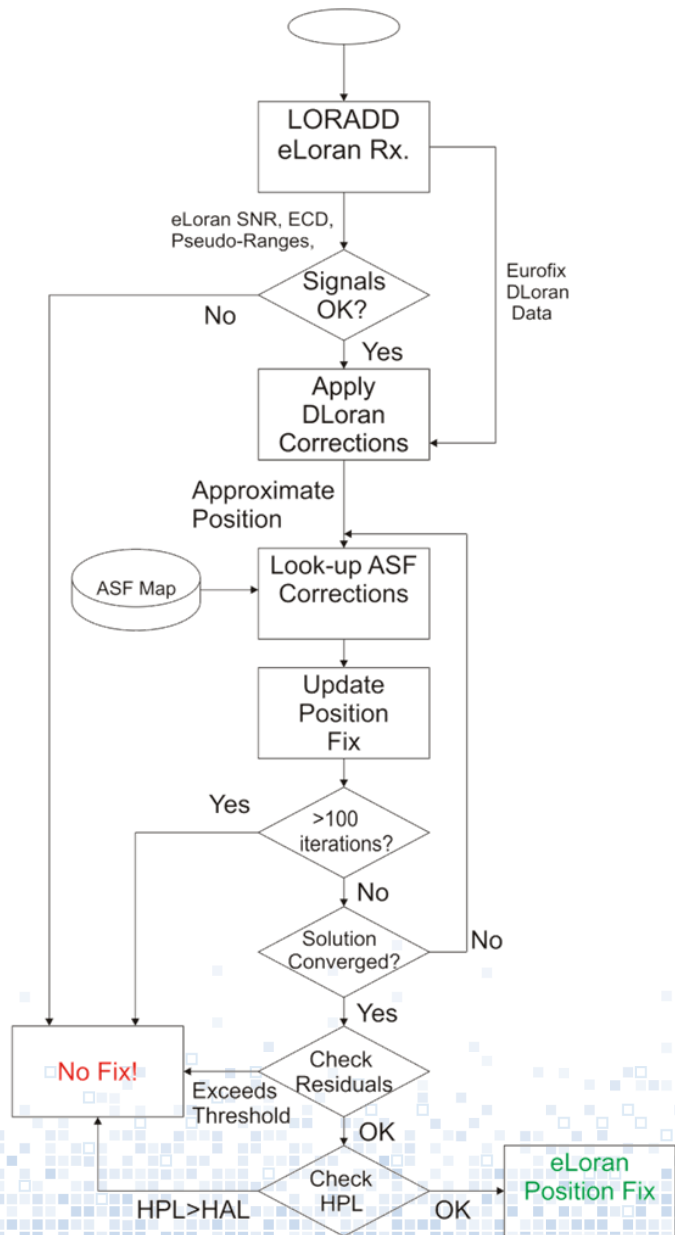
-If not, check is eLoran OK?

- Valid fix; HPL<25m; check RAIM; no Warnings?
- Use eLoran as R-PNT data source

■ Output

- Resilient PNT Data (position fix; HPL)

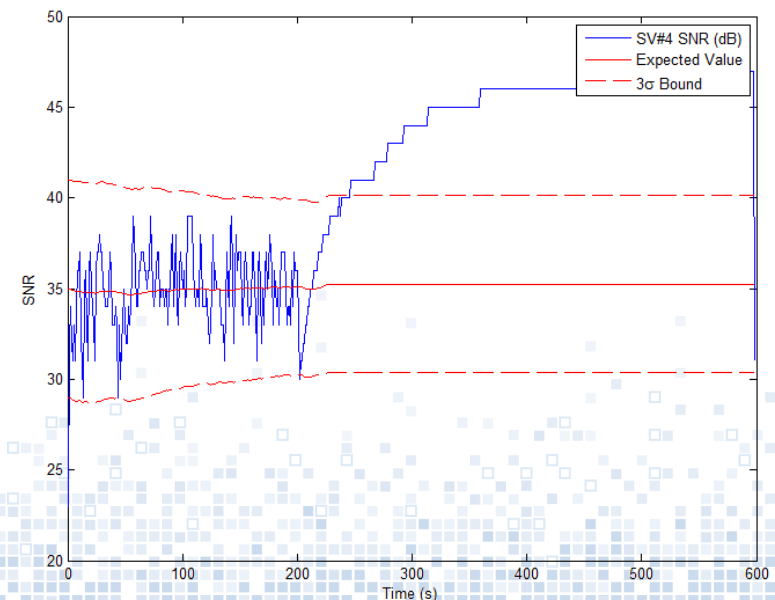
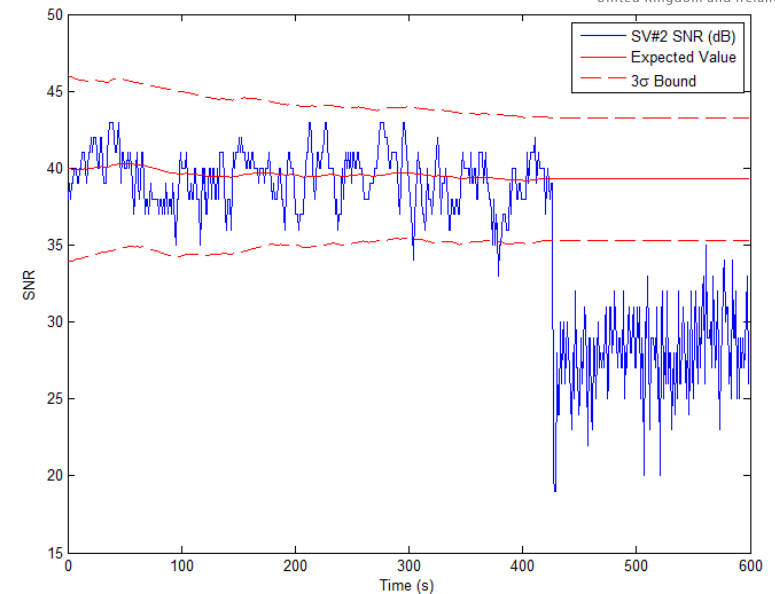
eLoran Integrity



- eLoran Receiver Standards don't include Integrity (yet!)
- Write our own process in software
- Get Integrity-assured eLoran output

Jamming Detection

- Jamming signal affects Noise Floor
- Can see changes in SNR
 - Model expected SNR
 - Provide 3σ bound
 - Dynamically update model
- Jamming Detection
 - SNR outside Bound means SV is jammed
 - Problem If several are jammed simultaneously



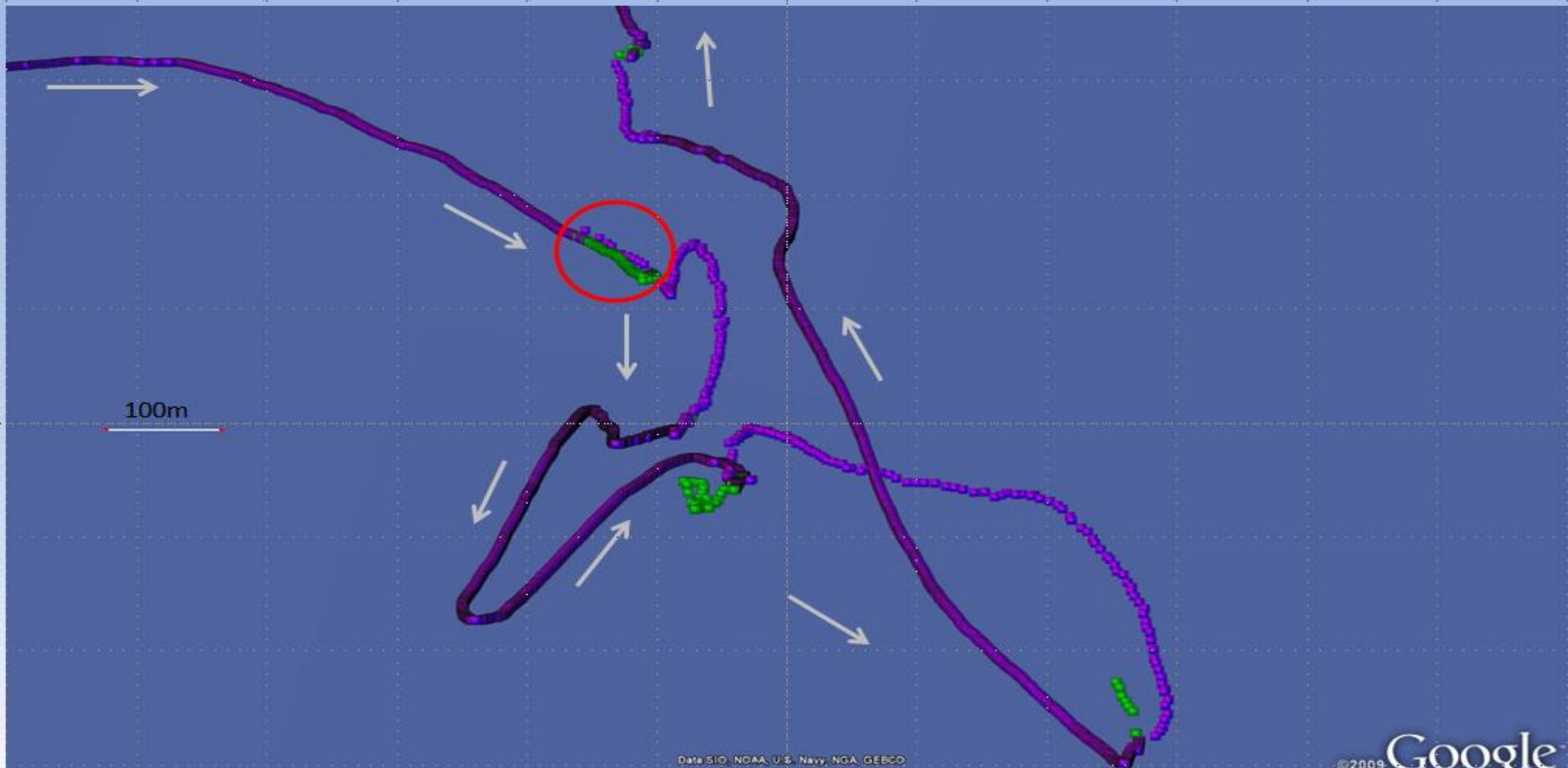
Jamming Outages

Day 1 - Vessel Tracks



Resilient Positioning & Navigation

Day 1 - Vessel Tracks



Data SIO, NOAA, U.S. Navy, NGA, GEBCO

Resilient Positioning – What you need

- Several, dissimilar sources of PNT
 - GPS (GNSS) as Primary
 - Terrestrial / LF system as Backup
 - Inertial (IMU) / Radar / Signals of Opportunity etc...

- Interference Detection / Integrity
 - Validate **all** incoming PNT information
 - Horizontal Protection Level (HPL) / RAIM
 - GPS Jamming / Spoofing Detection

- Timely, dependable (high fidelity) switching method
 - Reject bad or corrupt data
 - Automatic, seamless transition to secondary / backup system

Summary

- Resilient PNT by un-coupled GPS + eLoran
 - Retain Independence
 - Either / Or switch between them

- Independently verify eLoran and GPS Integrity
 - Horizontal Protection Level (HPL)
 - Jamming Detection
 - No Standards yet for Maritime GPS / eLoran HPL

- R-PNT Output based on 'best' system
 - Provide Resilient Position Data
 - Include HPL

Thank you!

**Chris Hargreaves
Research Engineer
General Lighthouse Authorities
Trinity House
The Quay
Harwich**

chris.hargreaves@gla-rrnav.org

+44-(0)1255-245154

+44-(0)7825-342979

