

A portrait of Tom Lowry at age 49





TWIN
CITY
LINES





KENWOOD

KENWOOD AVE - KENWOOD

395

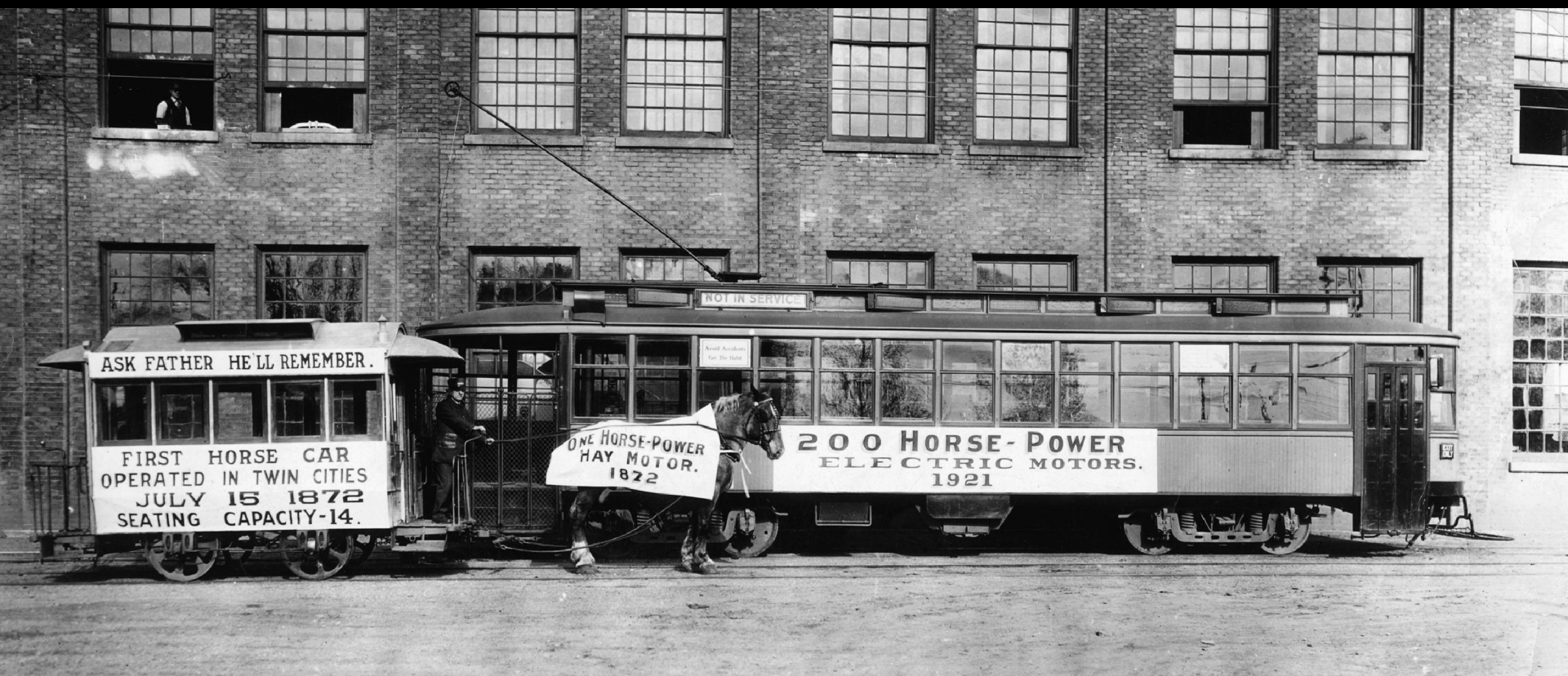
PHOTO POST CARD
A. C. ...
2812-38 AVE. SO.



"TWIN CITY SIGHT SEER" CAR AT INDIAN MOUNDS PARK, ST. PAUL, MINN.



23071



ASK FATHER HE'LL REMEMBER.

FIRST HORSE CAR
OPERATED IN TWIN CITIES
JULY 15 1872
SEATING CAPACITY-14.

NOT IN SERVICE

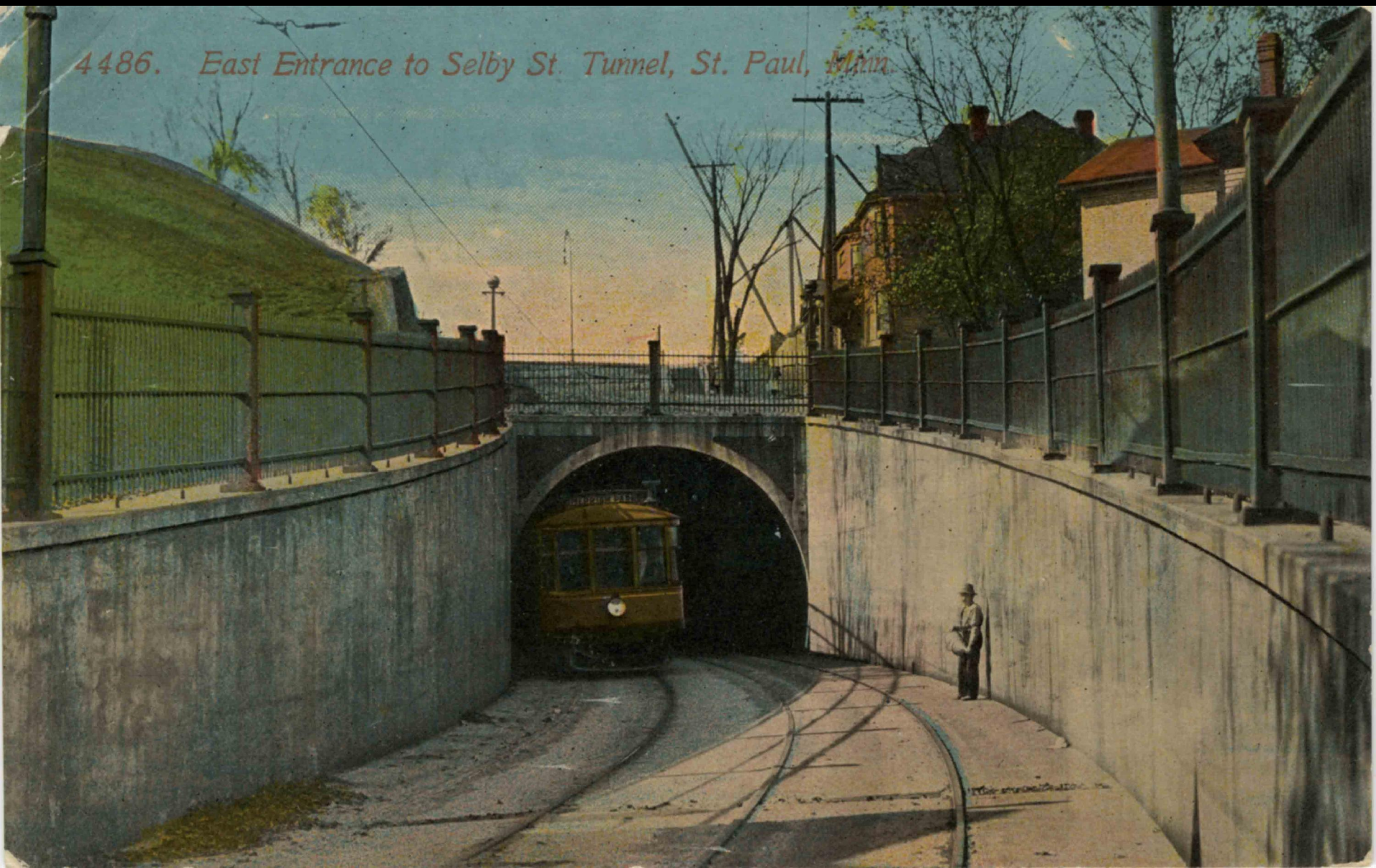
ONE HORSE-POWER
HAY MOTOR.
1872

200 HORSE-POWER
ELECTRIC MOTORS.
1921





4486. *East Entrance to Selby St. Tunnel, St. Paul, Minn.*



"THE GREAT WHITE WAY" BETWEEN
MINNEAPOLIS AND LAKE
MINNETONKA, MINN.





PIER AT SHADY ISLAND AND EXPRESS BOAT "WHITE BEAR," LAKE MINNETONKA, MINN.

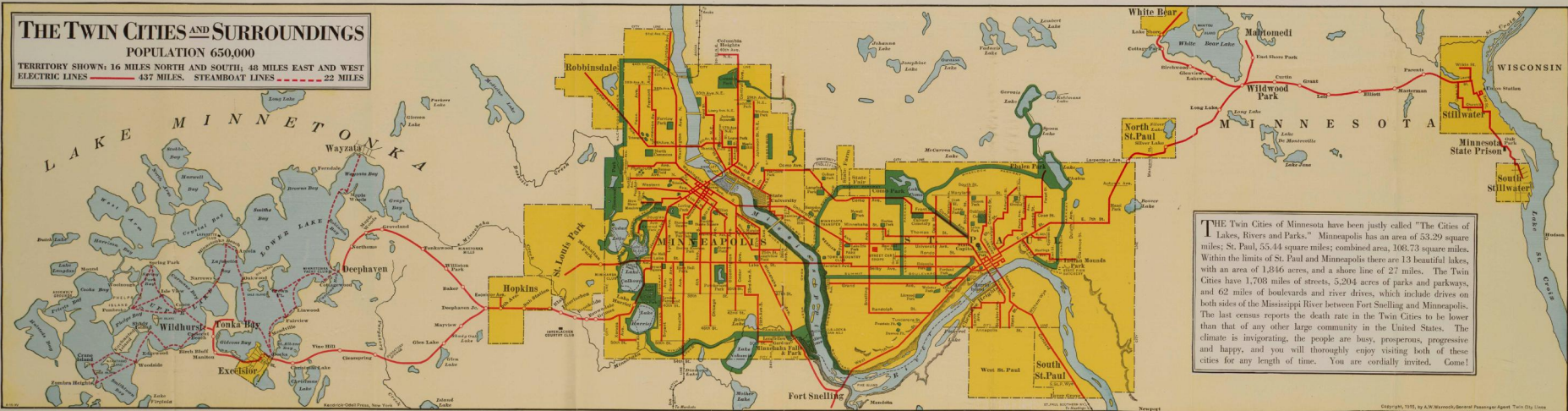




THE TWIN CITIES AND SURROUNDINGS

POPULATION 650,000

TERRITORY SHOWN: 16 MILES NORTH AND SOUTH; 48 MILES EAST AND WEST
 ELECTRIC LINES 437 MILES. STEAMBOAT LINES 22 MILES



THE Twin Cities of Minnesota have been justly called "The Cities of Lakes, Rivers and Parks." Minnesota has an area of 53,299 square miles; St. Paul, 55.44 square miles; combined area, 108.73 square miles. Within the limits of St. Paul and Minneapolis there are 13 beautiful lakes, with an area of 1,846 acres, and a shore line of 27 miles. The Twin Cities have 1,708 miles of streets, 5,204 acres of parks and parkways, and 62 miles of boulevards and river drives, which include drives on both sides of the Mississippi River between Fort Snelling and Minneapolis. The last census reports the death rate in the Twin Cities to be lower than that of any other large community in the United States. The climate is invigorating, the people are busy, prosperous, progressive and happy, and you will thoroughly enjoy visiting both of these cities for any length of time. You are cordially invited. Come!

Copyright, 1915, by A.W. Wasson's General Passenger Agent, Twin City Lines



GREAT NORTHERN

ANOKA ELECTRIC LINE



PILLSBURY
LINCOLN-MILL.

ANOKA

ANOKA ELECTRIC DEPOT ANOKA MINN. 1915

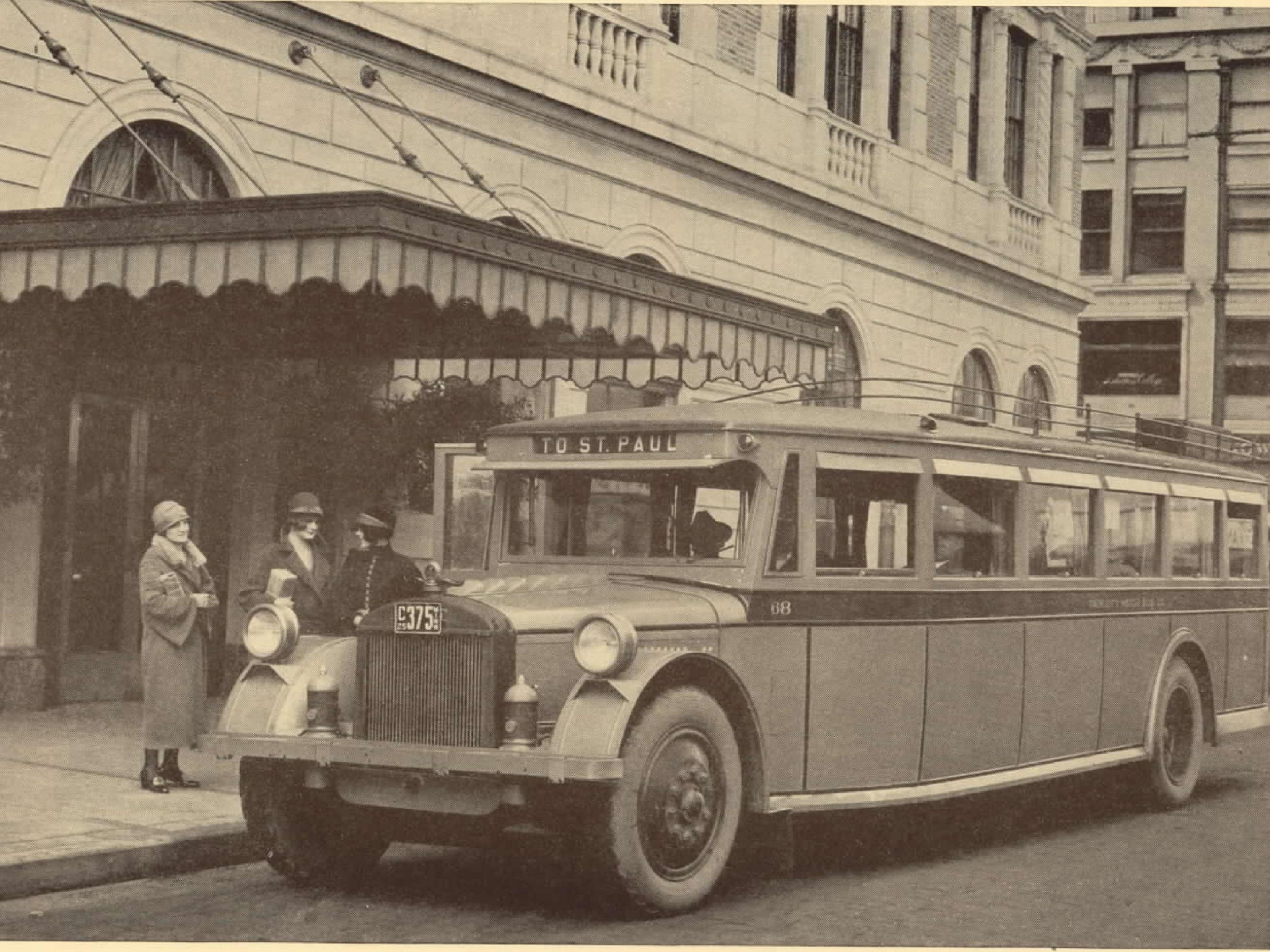


SECOND ST. WEST HASTINGS, MINN. X 2347

IF YOU CAN'T GO ACROSS- COME ACROSS- LIBERTY BLENDS DUTY ★★

SCOPER & CO.





TO ST. PAUL

E 375

68



ENWOOD-ST. LOUIS PA

KENWOOD
ST. LOUIS P

465

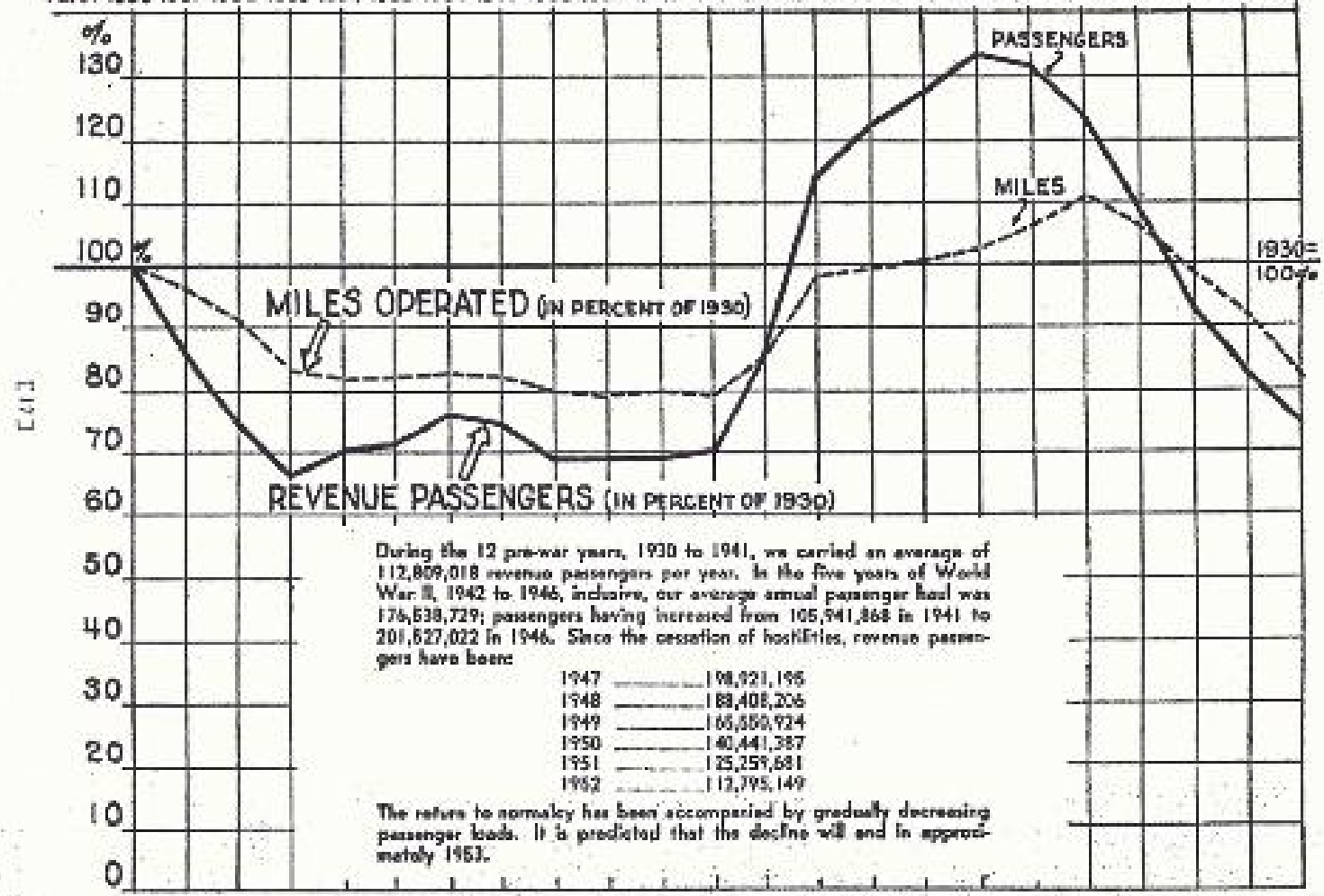
Mack

B256-954
38 M N N





**GRAPH SHOWING
YEARLY REVENUE PASSENGERS & MILES OPERATED, IN PERCENT OF 1930.**
 YEAR-1930 1931 1932 1933 1934 1935 1936 1937 1938 1939 1940 1941 1942 1943 1944 1945 1946 1947 1948 1949 1950 1951 1952



During the 12 pre-war years, 1930 to 1941, we carried an average of 112,809,018 revenue passengers per year. In the five years of World War II, 1942 to 1946, inclusive, our average annual passenger load was 176,638,729; passengers having increased from 105,941,868 in 1941 to 201,627,022 in 1946. Since the cessation of hostilities, revenue passengers have been:

1947	198,921,196
1948	188,408,206
1949	166,880,924
1950	140,441,387
1951	125,259,681
1952	112,795,149

The return to normalcy has been accompanied by gradually decreasing passenger loads. It is predicted that the decline will end in approximately 1953.



OUR CITY
LAUNDRY CO.
RELIABLE SERVICE
LOW DOCK

NOW
STATE
THEATRE
25
10 to 12

GRAPES
OF WRATH
John Steinbeck

KUM
ON
S
CITY



TO ST. PAUL

12



2315

2315



SELBY-LAKE

SELBY-LAKE

TWIN CITY LINES

OLD CROW

50¢
The Best of Everything
The Best of Everything
The Best of Everything

PAY ENTER

Fresh as a Daisy
Master
Master

1177

BY 829





 METROPOLITAN TRANSIT COMMISSION





BUS
INFO. 827 7733



NAEGELE

OUGHTA SITE.



SILVANIA
JERRY'S T V

















ST. PAUL MOTOR
USED CARS
BUICK PG

MARION ST

Moore's
Paints

PAINTS

JOHN WELLS & CO.
WHOLESALE GROCERY
SPECIAL PRICES

KEY
LOCK
JEWELRY
KEYS

