

Metropolitan Council: Looking Ahead

Metropolitan Council Chair Adam Duininck

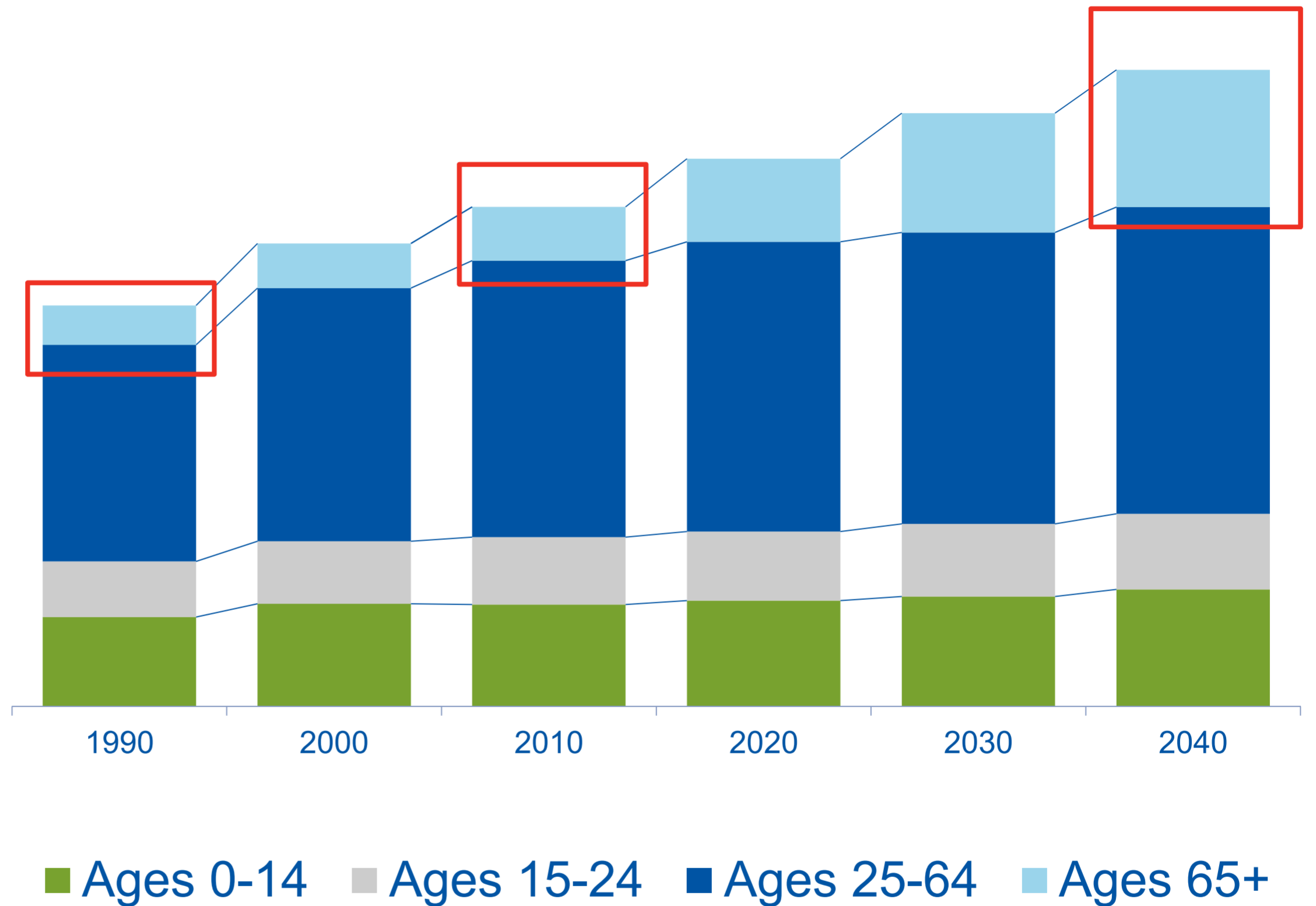


Changing Region

Aging Population

Senior Citizens

- 1 in 10 1990
- 1 in 9 in 2010
- 1 in 5 in 2040



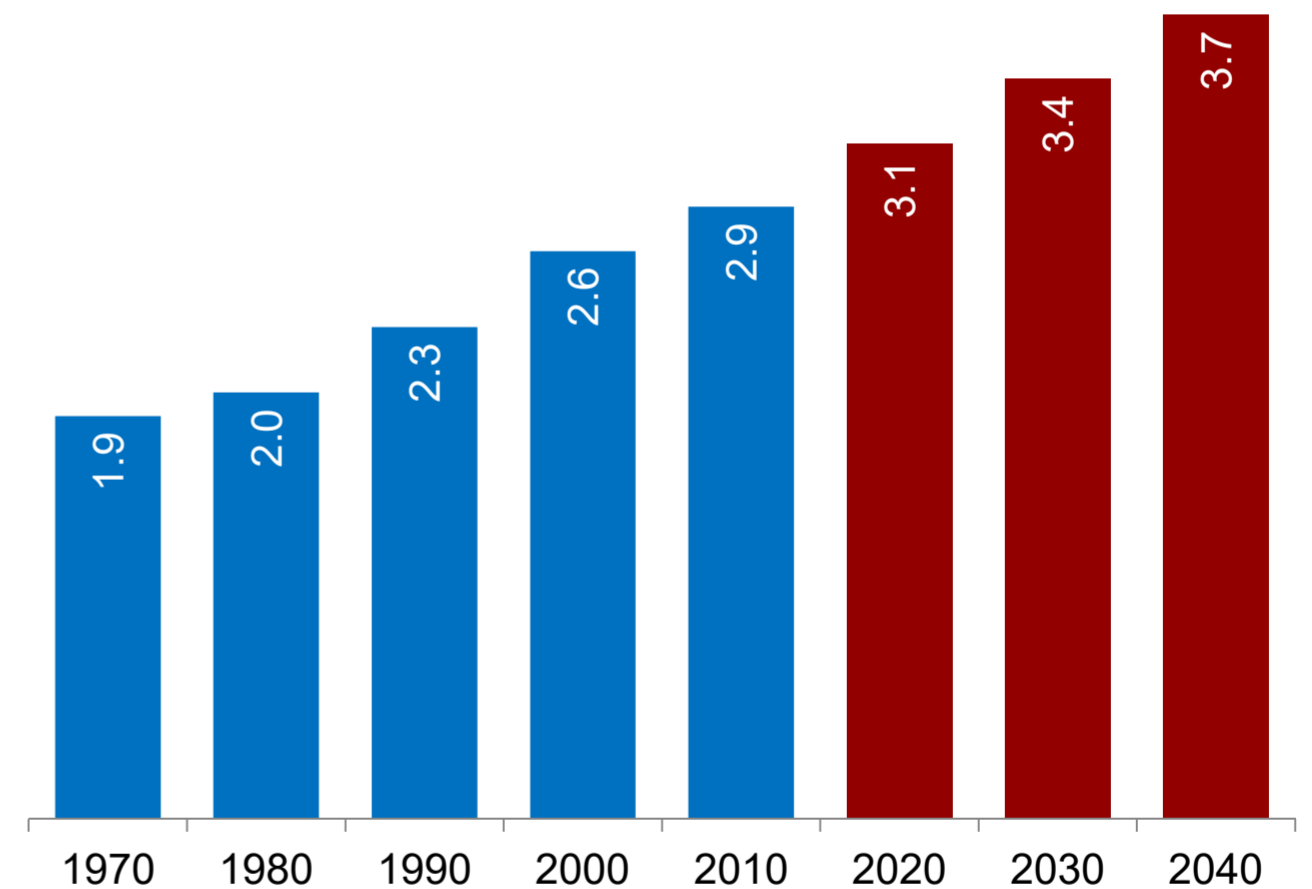
Source: 1990-2010 data on population from Census Bureau;
2040 forecasts from the Metropolitan Council (March 2015 release)

Changing Region

Population Growth

- Metro population increases 750,000 by 2040
- 40% of region's population will be made up of people of color by 2040

Twin Cities Population
(in millions)

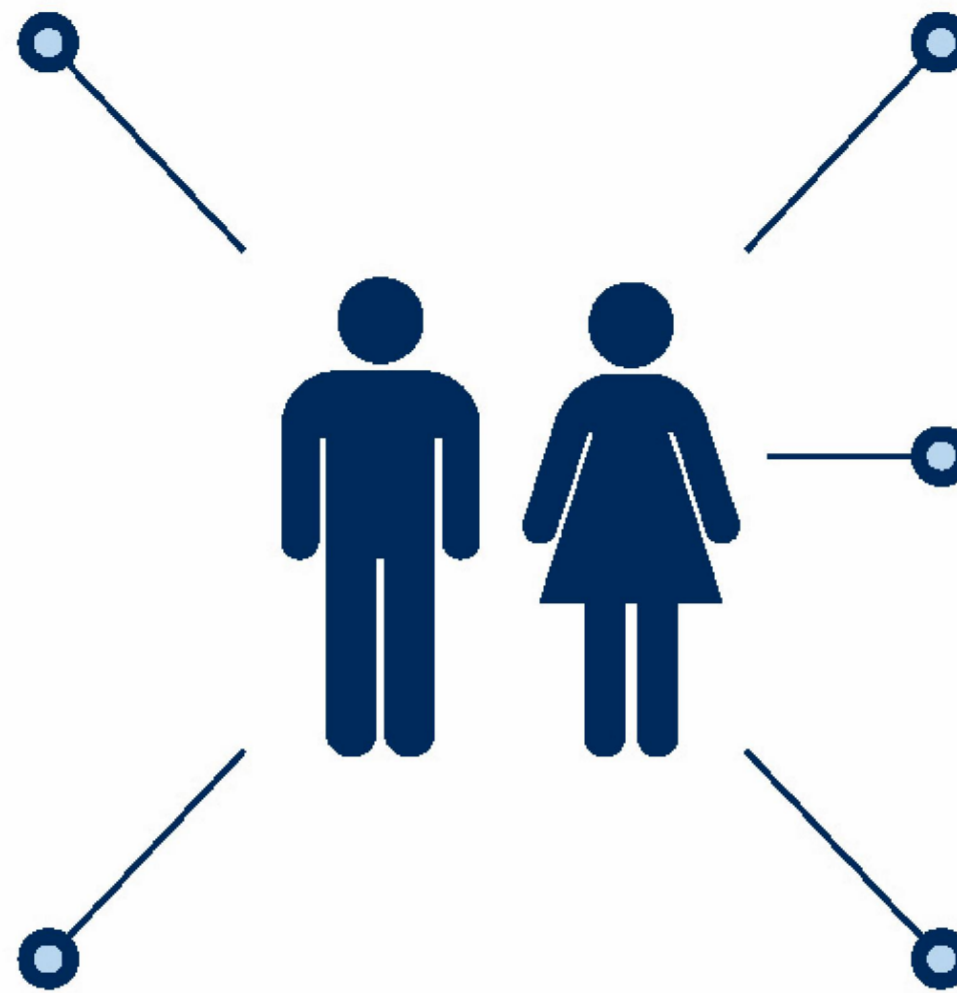


Transit: Connects Us

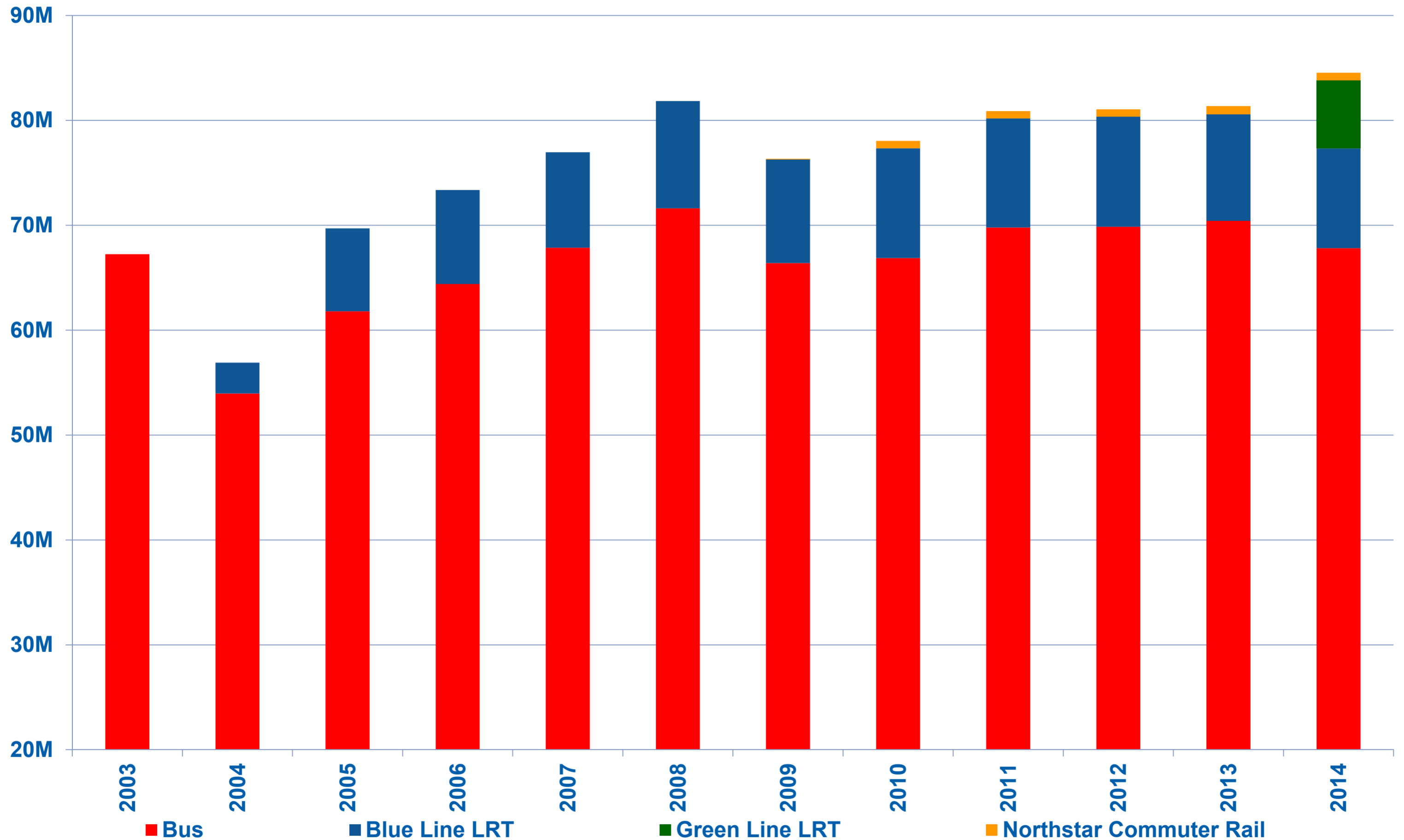
Nearly 40% of people who work in downtown Minneapolis and Saint Paul use transit to get to their jobs

80% of rides are to work and school

2/3 of all transit riders live in households with at least one automobile



Transit: Ridership Increasing



Transit: Stimulates Growth

TUESDAY, JUNE 23, 2015

StarTribune

STARTRIBUNE.COM/BUSINESS • SECTION D

BUSINESS

Home along the Green Line

On Minneapolis-St. Paul border, apartment project aims at light-rail commuters

By JIM BUCHTA
jim.buchta@startribune.com

With a saltwater swimming pool, a workshop for bicyclists and a cyber cafe, an Indianapolis-based developer hopes to create a one-of-a-kind apartment building on the border of Minneapolis and St. Paul.

Flaherty & Collins Properties will break ground Tuesday on 2700 University, a \$54 million mixed-use apartment building in an up-and-coming area at the corner of University and Emerald avenues along the Green Line.

"Our location speaks for itself," said Ryan Cronk, the vice president of development for Flaherty

& Collins, which also developed the Residence at the Cor, a 230-unit apartment building near a Northstar commuter rail stop in Ramsey.

"We're not in the North Loop and we're not in Uptown, but I think we can compete with those locations by offering a similar product at a lower price."

The six-story building is beside the Westgate light-rail station and will have 248 apartments, 3,000 square feet of retail space and two levels of underground parking.

Wellington Management of St. Paul, which developed hundreds of apartments and condos in the area, planned to build a \$24 million

See **APARTMENTS** on D2 ▶



The six-story building project, with apartments and retail space, will be near the Green Line's Westgate station.

\$54 million Cost of the mixed-use apartment building	248 Number of units in the development	3,000 sq. ft. Space that will be available for retail
--------------------------------------------------------------------	-----------------------------------------------------	--------------------------------------------------------------------

- Blue Line 15,000 housing units
- Green line \$3 billion in development

Livable Communities

- Lake Street Station - \$11 M
 - LCDA Award \$1M
 - 64 units affordable housing
 - 8,000 sq. ft. commercial
- Hamline Station - \$25 M
 - LCA awards total - \$6.95 M
 - Total public investment - \$9 M
 - 108 units affordable housing
 - 13,700 sq. ft. commercial



Building a Regional Transit System for the 21st Century



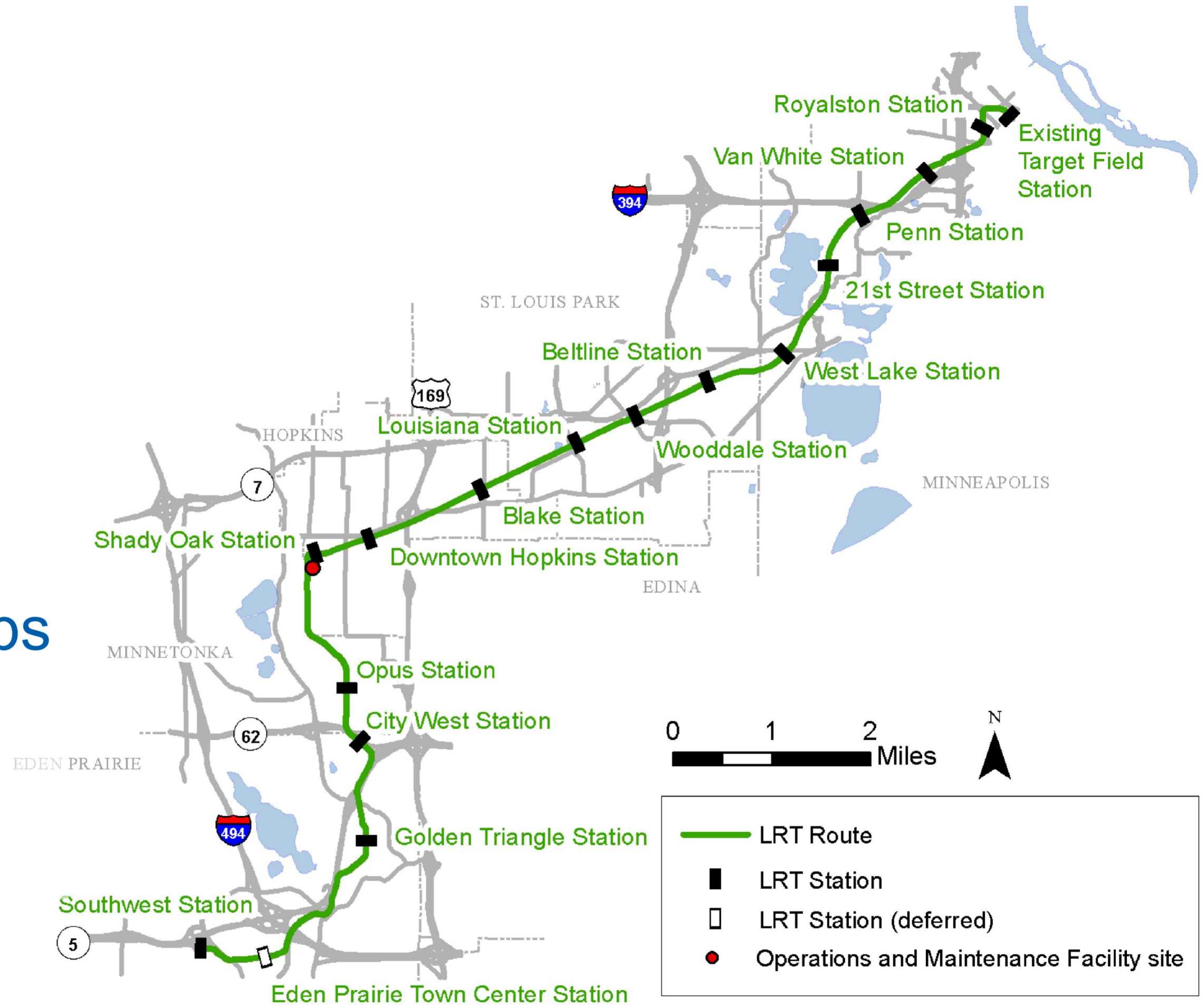
Green Line LRT: *Eden Prairie to Target Field*

Creates:

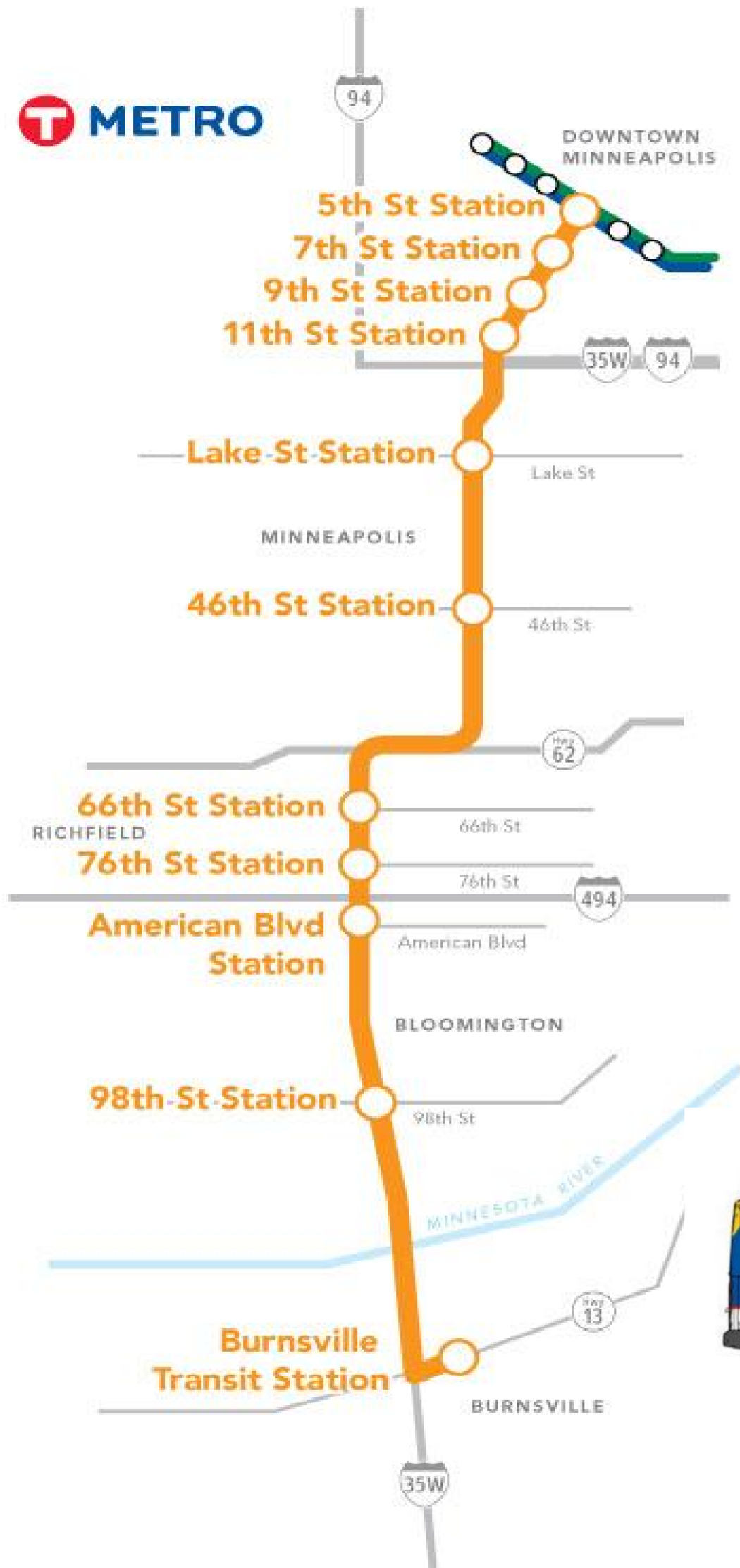
- 7,500 jobs

Will reach:

- 174,200 existing jobs
- 238,300 jobs by 2040



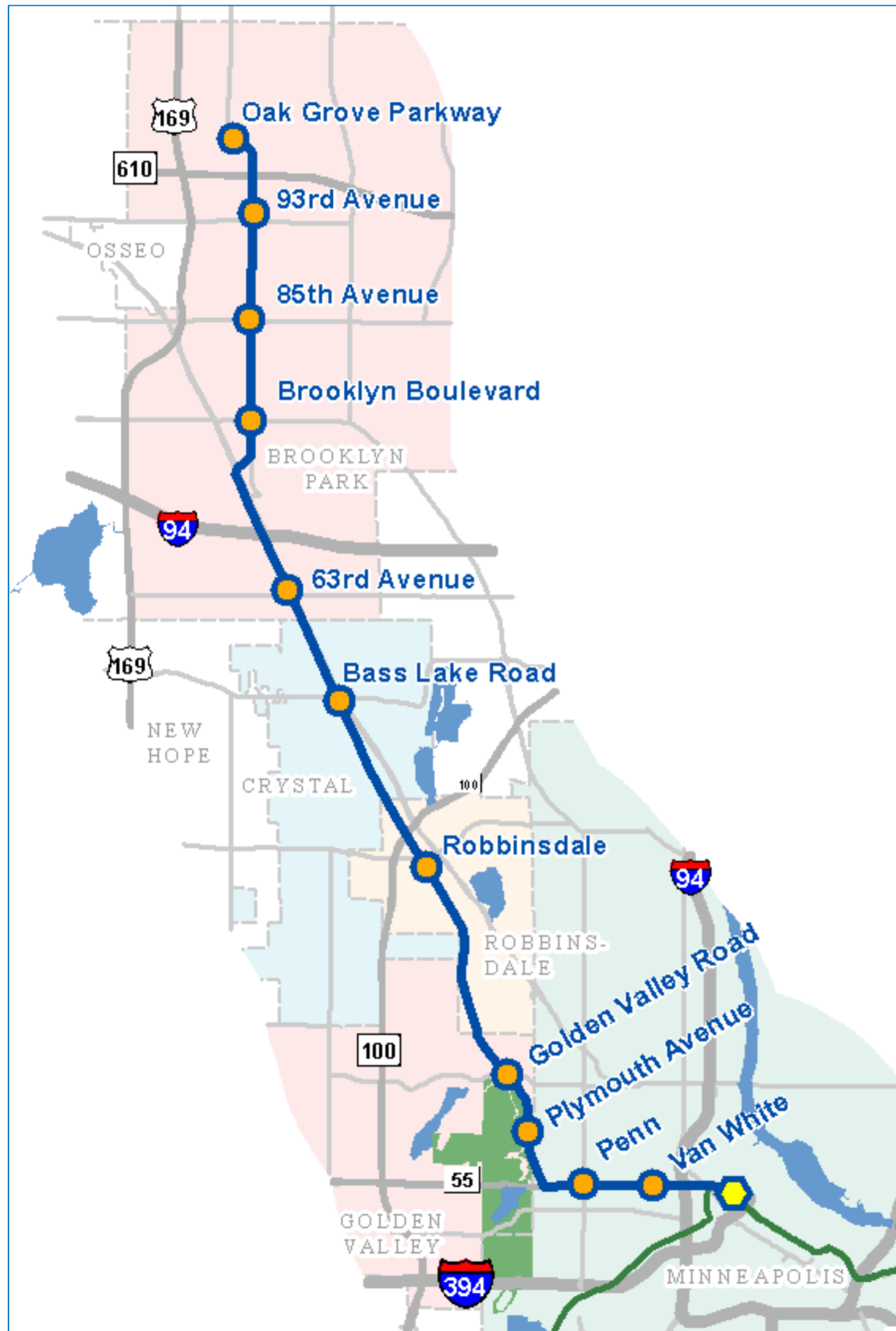
Orange Line BRT: *Burnsville to Target Field*



- 17 miles, 11 stations
- Opening 2019
- All-day, frequent station-to-station express service
- Projected ridership 26,500 (2040)
- Existing I-35W congestion
 - 14,000 avg. weekday rides
 - 210,000 vehicles
- Serves 50,000 jobs outside downtown



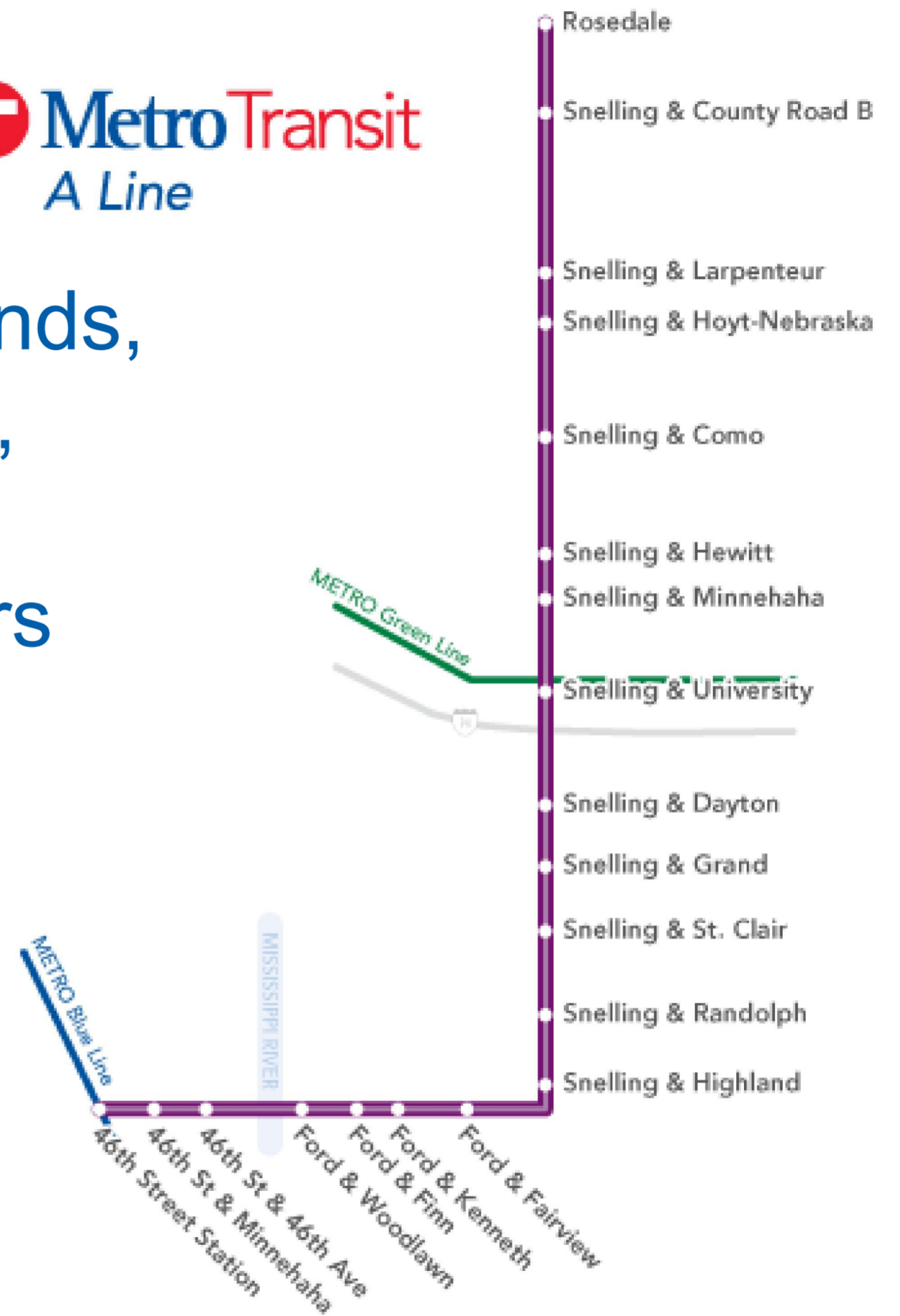
Bottineau LRT: *Brooklyn Park to Target Field*



- Connects Northwest suburbs to transit system
- One-seat ride from Target Northern Campus to Mall of America and MSP Airport







A Line BRT: *Snelling Ave, Ford Pkwy, 46th St.*

- 10 mile corridor
- 20 BRT Stations
- Serves Rosedale, State Fairgrounds, Hamline, Green Line, Macalester, Highland Park, Blue Line
- 4,000 existing corridor passengers

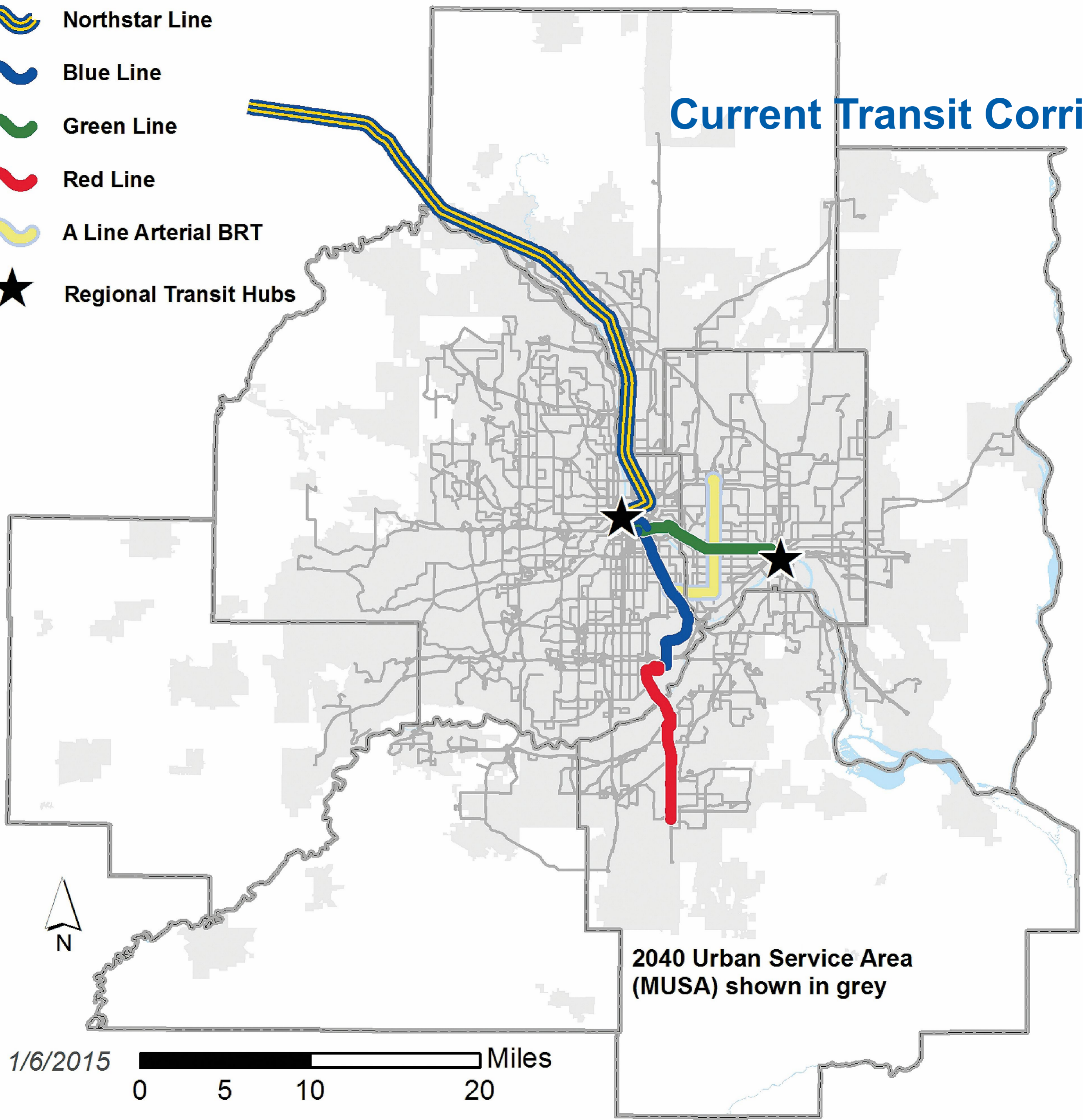


Arriving in 2016!



-  Northstar Line
-  Blue Line
-  Green Line
-  Red Line
-  A Line Arterial BRT
-  Regional Transit Hubs

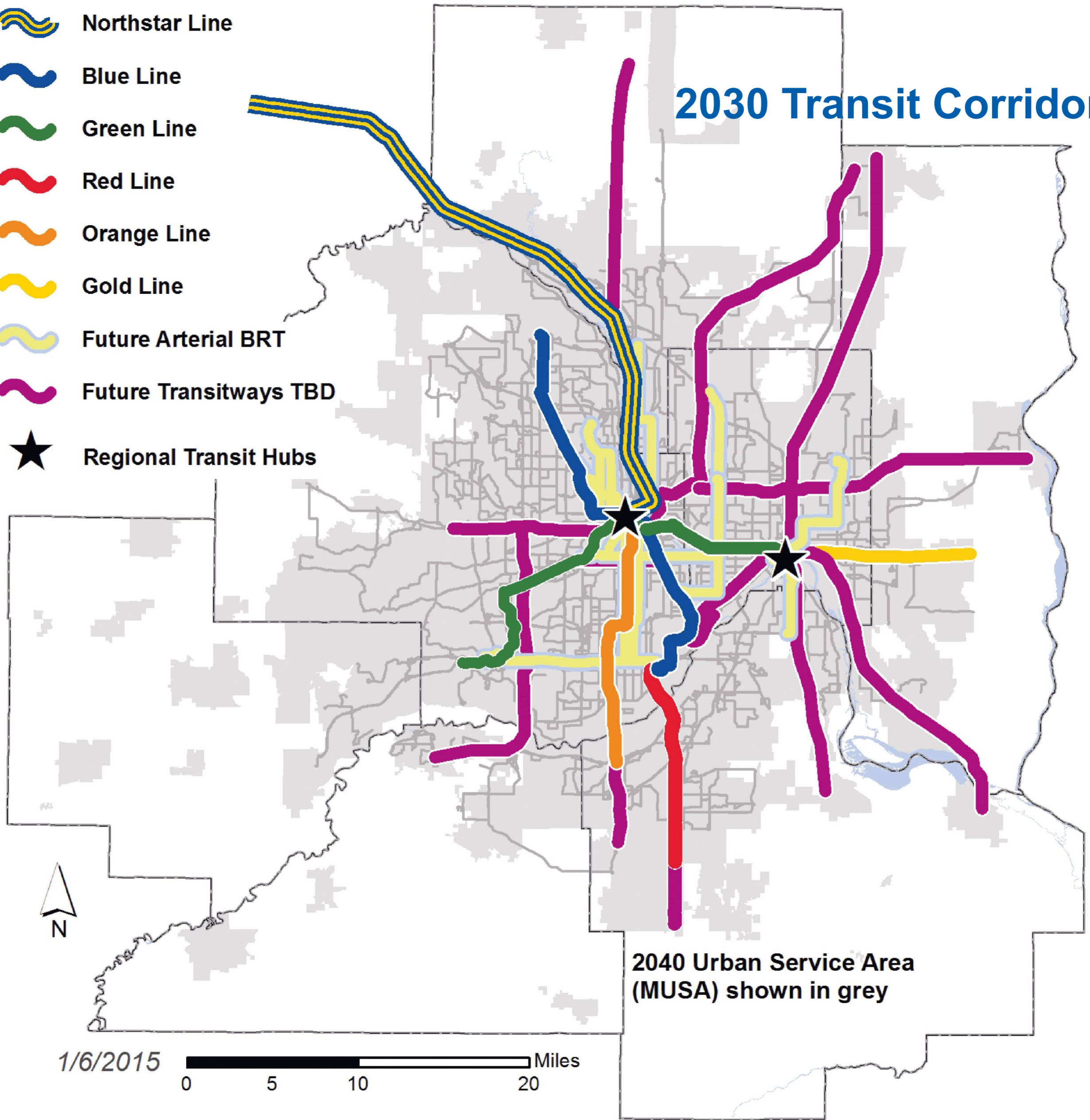
Current Transit Corridors



2040 Urban Service Area (MUSA) shown in grey

-  Northstar Line
-  Blue Line
-  Green Line
-  Red Line
-  Orange Line
-  Gold Line
-  Future Arterial BRT
-  Future Transitways TBD
-  Regional Transit Hubs

2030 Transit Corridors



2040 Urban Service Area (MUSA) shown in grey

1/6/2015 Miles
 0 5 10 20

A 21st Century Transit System





METROPOLITAN
C O U N C I L