

# Importance of Bus Connections to Light Rail Accessibility Gains



Andrew Guthrie - Yingling Fan - David Levinson  
National Light Rail & Streetcar Conference, 11/17/15



*Versus?*





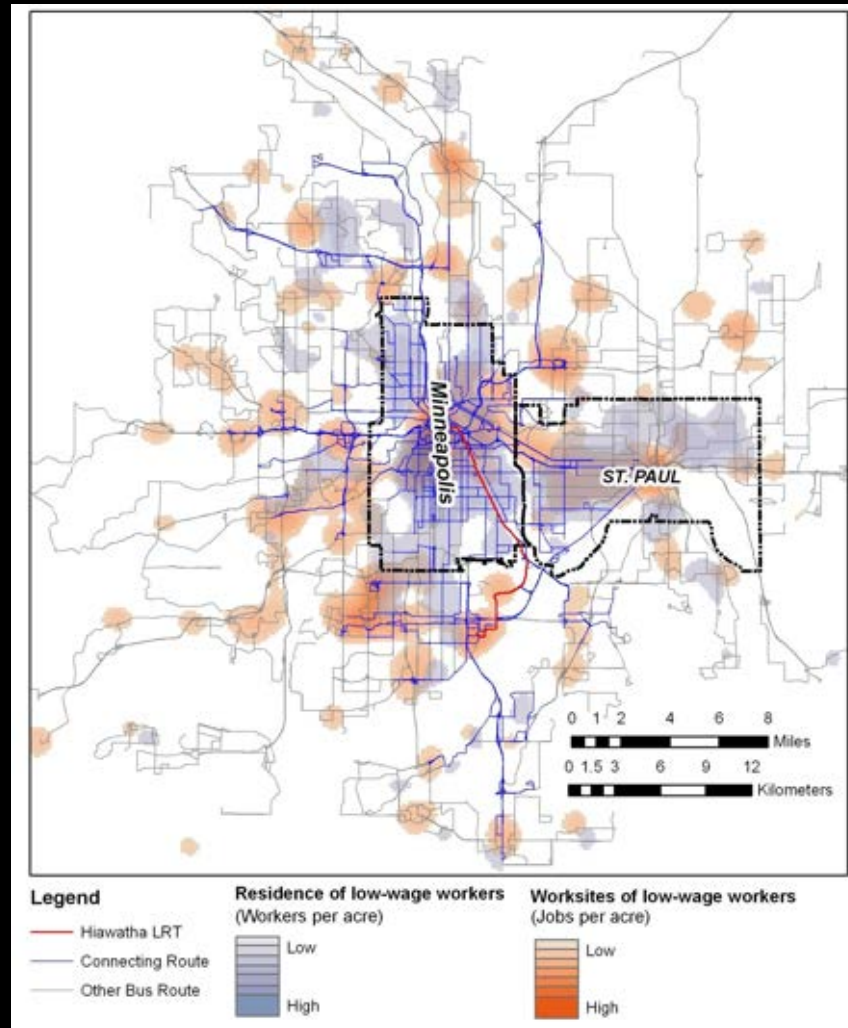
Most of system  
Social equity concerns

*Versus?*

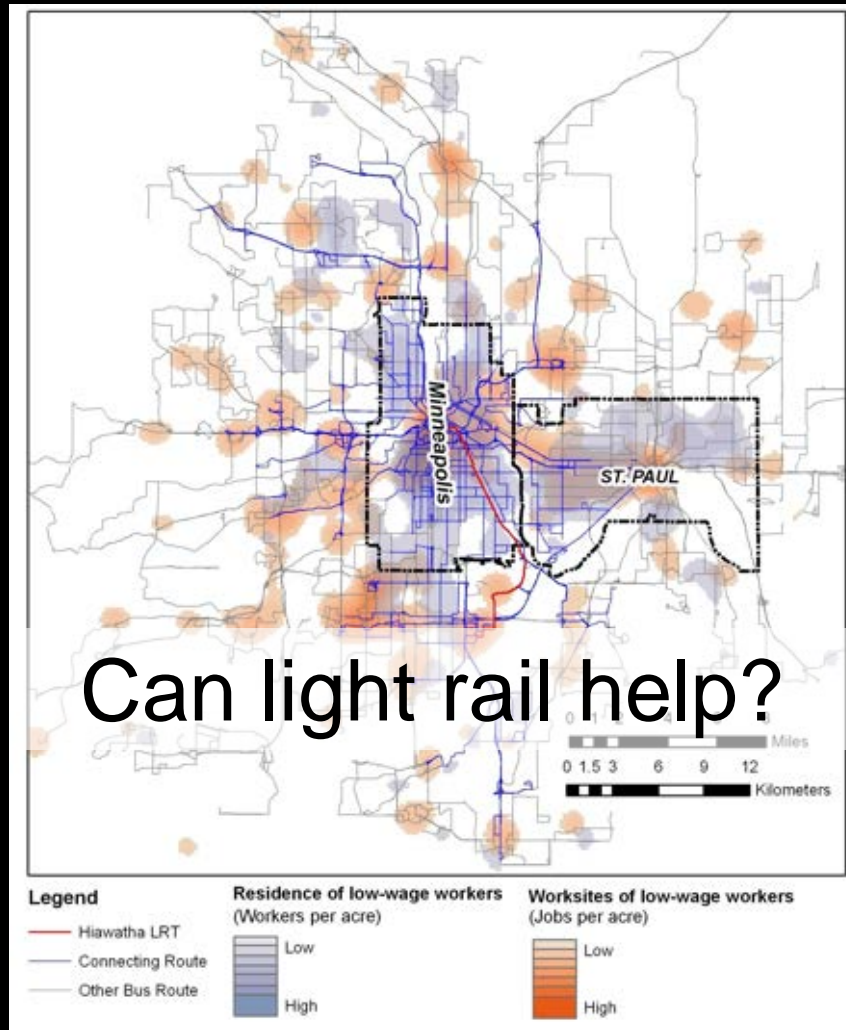
Local mobility gains  
Limited areas  
Chasing choice riders?



# Spatial Mismatch



# Spatial Mismatch



# Area Types

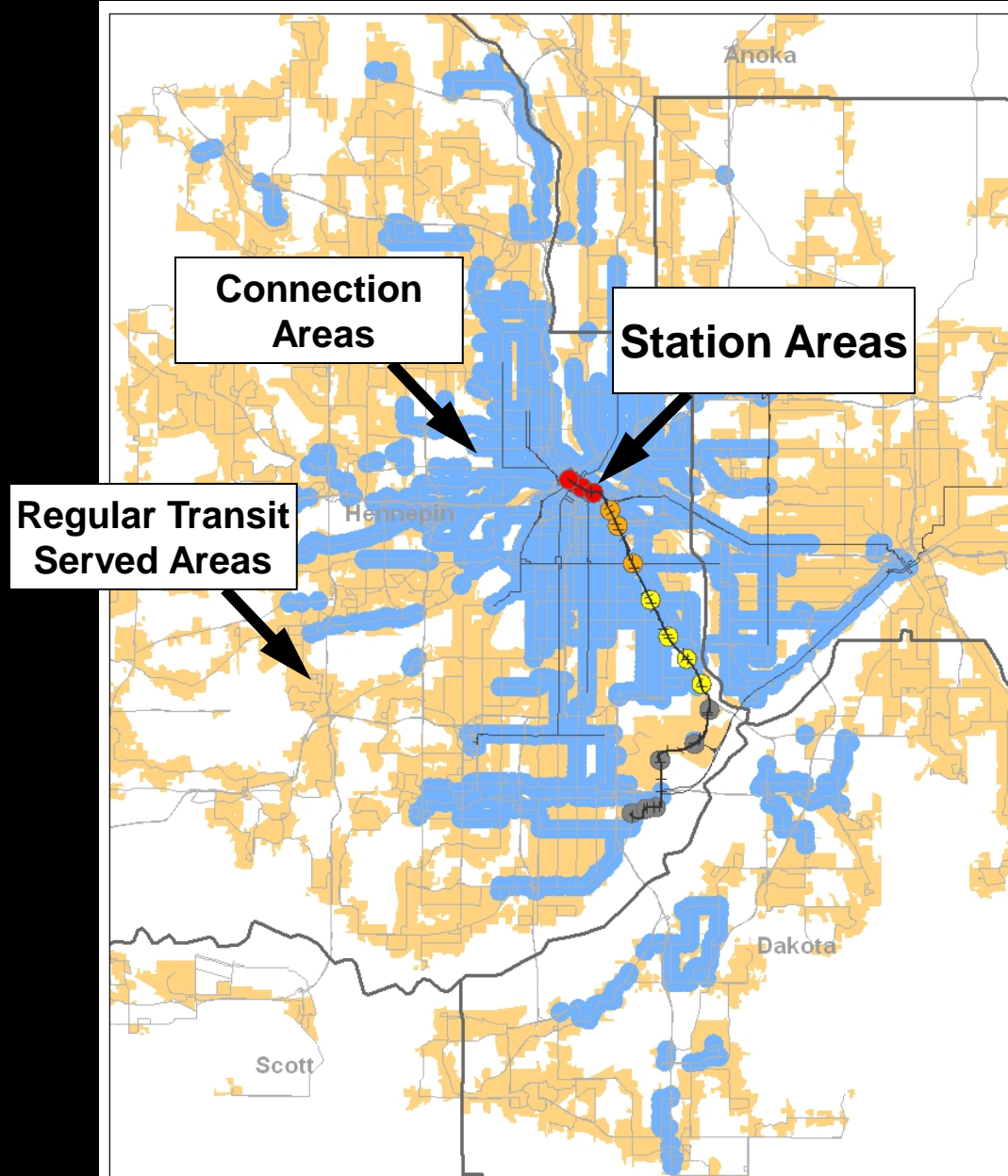
Station areas

Connection areas

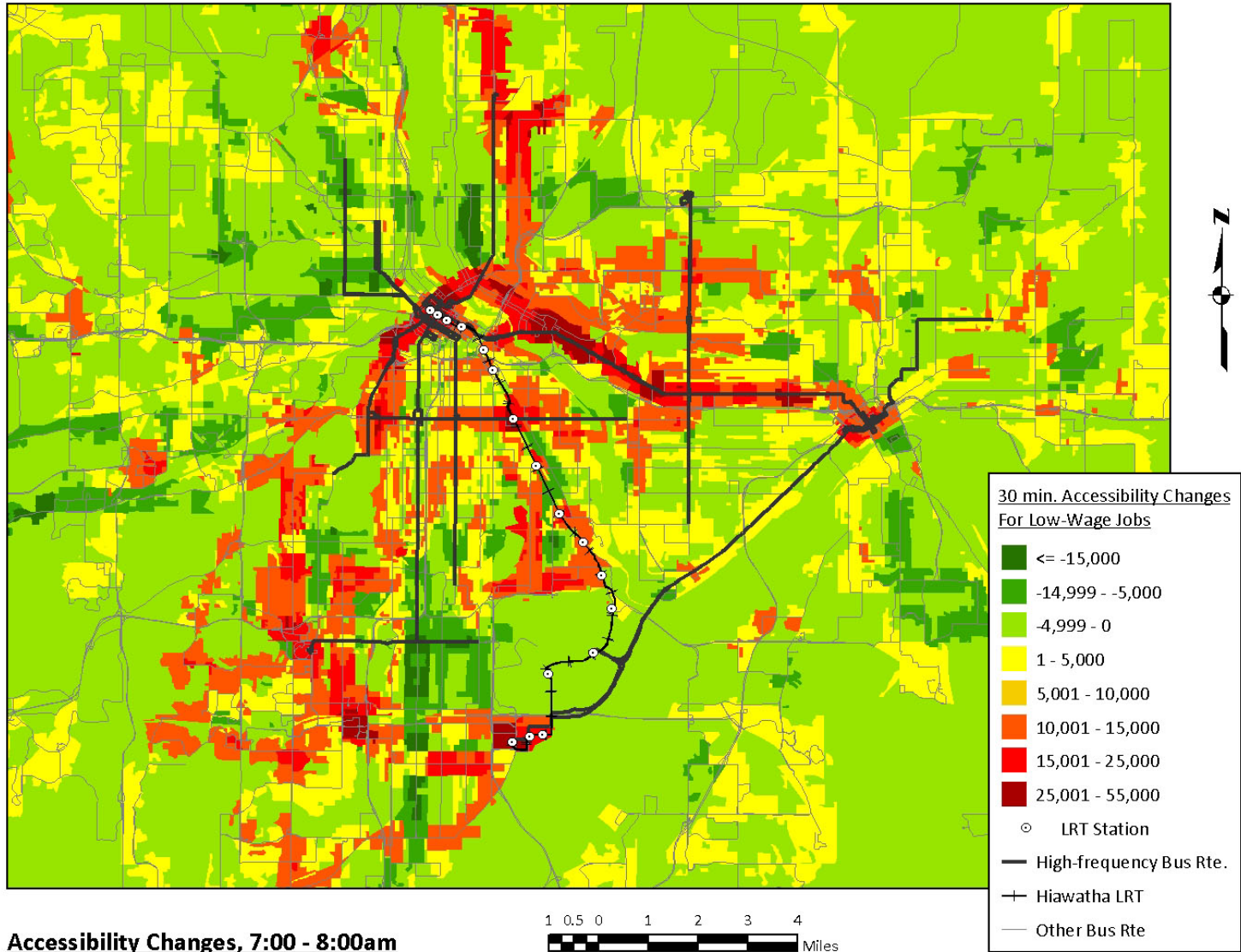
direct connection

$\leq 30$  mins

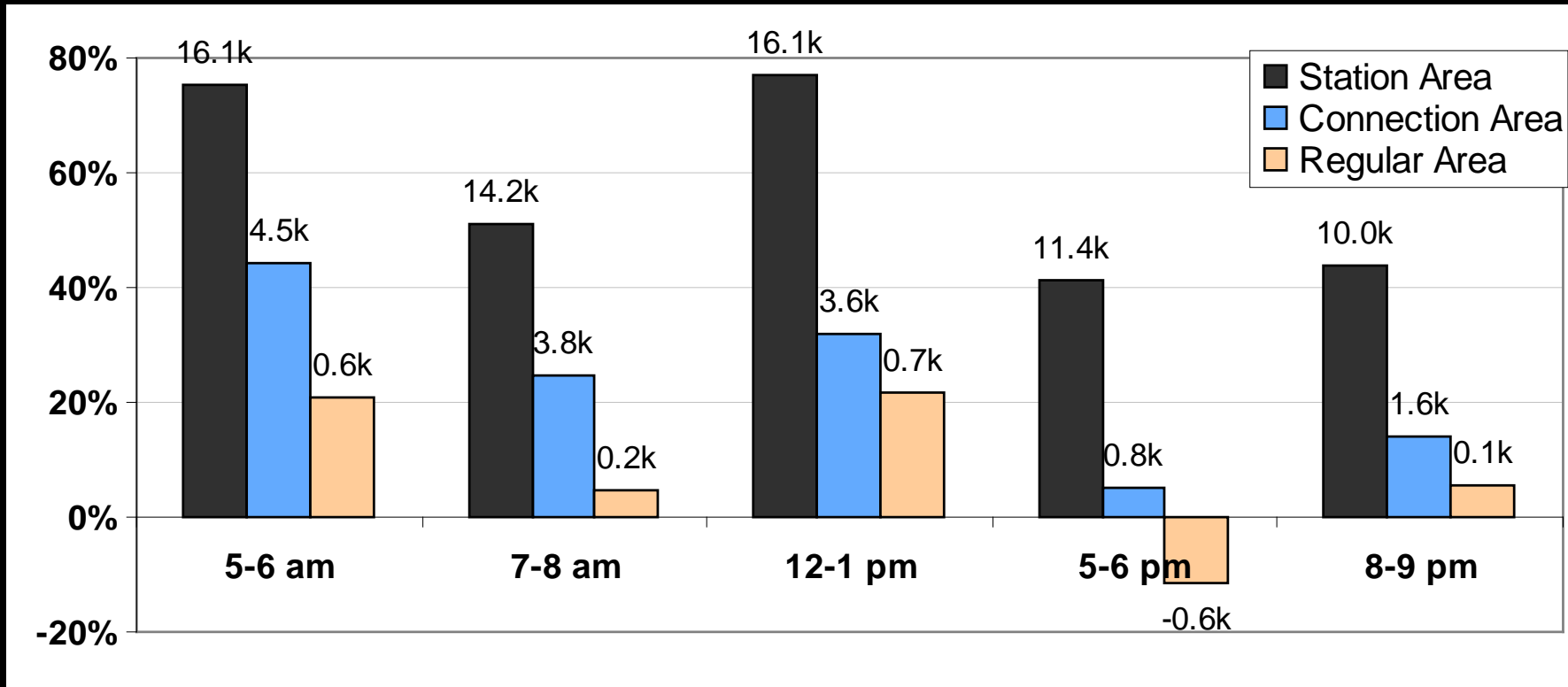
22% metro population



# Accessibility Changes: Morning Peak—7am-8am



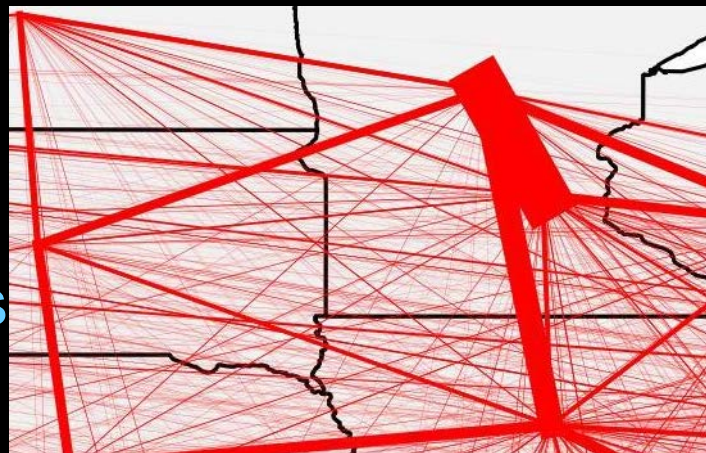
# Low-wage accessibility change





# Commute Flow Impacts

Accessibility gain = realized benefits?  
Change in “transit possible” O/D pairs



# Change: Low-Wage Workers & Jobs

Area Categories	<u>WORKERS</u> Moving In		<u>JOB</u> S Moving In	
	Total workers	Average (Per BG Pair)	Total jobs	Average (Per BG Pair)
Downtown Hiawatha	103	0.123	2,258	0.543
North Hiawatha	593	0.202	-300	-0.070
South Hiawatha	124	0.047	-134	-0.061
Suburban Hiawatha	4	0.019	347	0.154
<b>Bus Connections</b>	<b>14,134</b>	<b>0.108</b>	<b>12,788</b>	<b>0.103</b>

# Conclusions

~~Rail versus bus~~

Rail **and** bus

Equity concerns, but potential for benefits.

Need to plan around connections

TOD

Economic development

Affordable housing



# Conclusions

~~Rail versus bus~~

Rail **and** bus

Equity concerns, but potential for benefits.

Need to plan around connections

TOD

Economic development

Affordable housing



Thank you!