

# Denver RTD's Central Corridor

**Eric Miller, AICP**

Senior Rail Service Planner/Scheduler  
Regional Transportation District  
Denver, Colorado

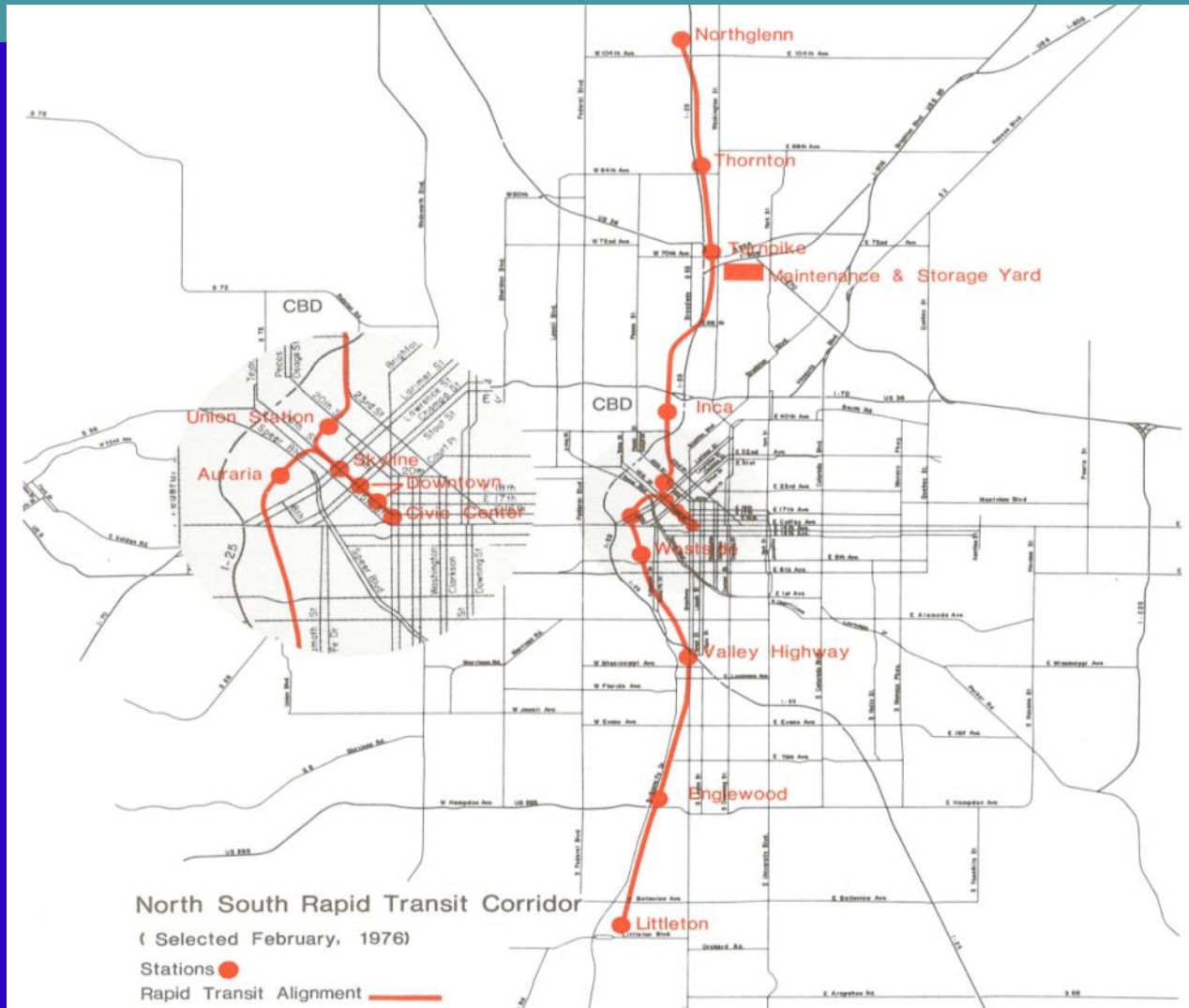


# Incremental Approach

Advantage:  
Gets Built Quickly and Cheaply

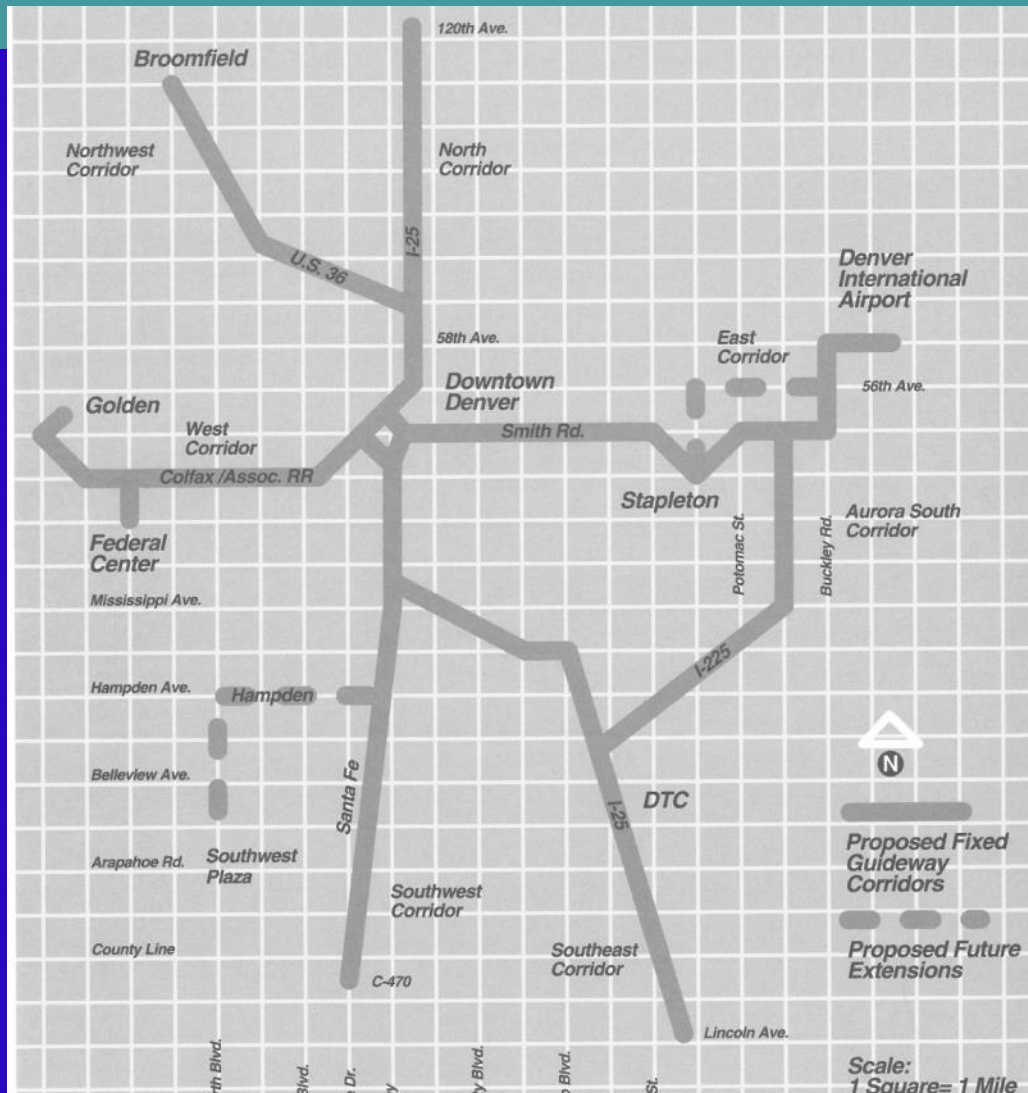
Disadvantage:  
Capacity Issues as System Grows

# 1976 North South Rapid Transit Project



13<sup>th</sup> National Light Rail & Streetcar Conference

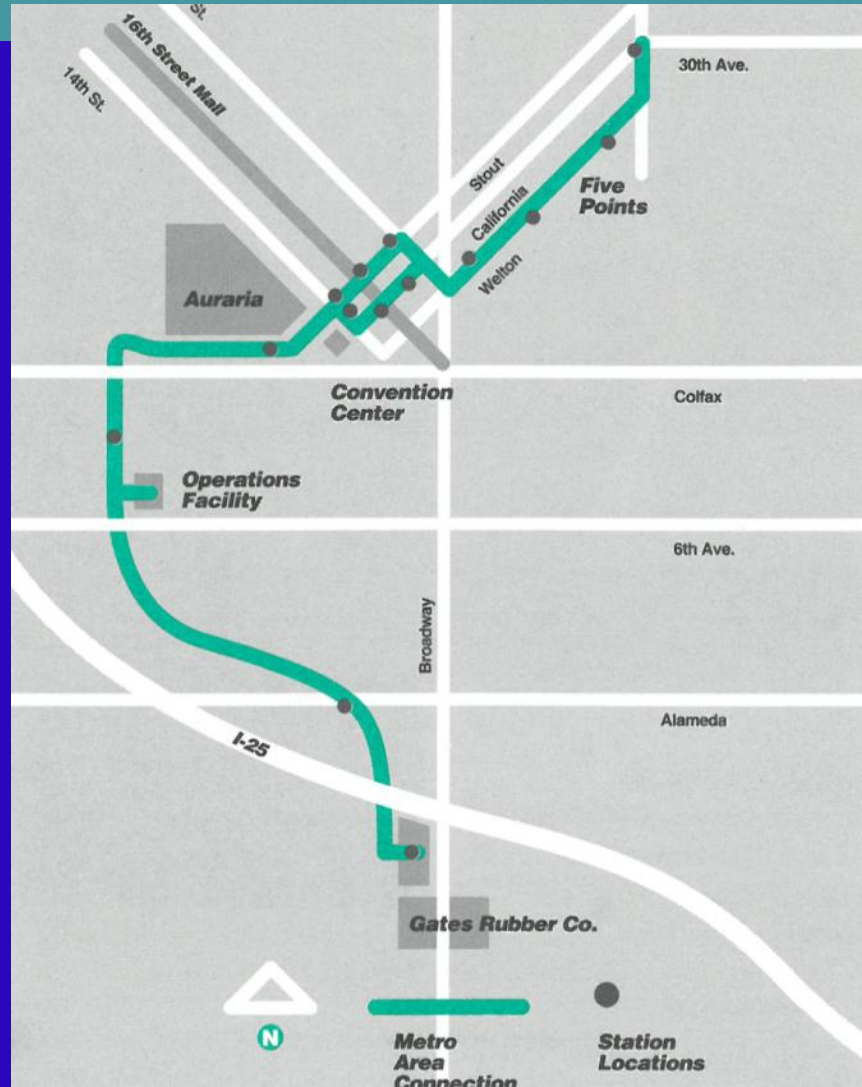
# 1987 Regional Rapid Transit Plan



13<sup>th</sup> National Light Rail & Streetcar Conference



# Metro Area Connection, 1992



13<sup>th</sup> National Light Rail & Streetcar Conference

# Denver RTD LRT System, 1994



# LRT Demonstration Line Stats

- 16,000 Weekday Boardings (1999)
- 10 trains per hour/peak direction
- 18 LRVs per hour/peak direction

# Denver RTD LRT System, 2000

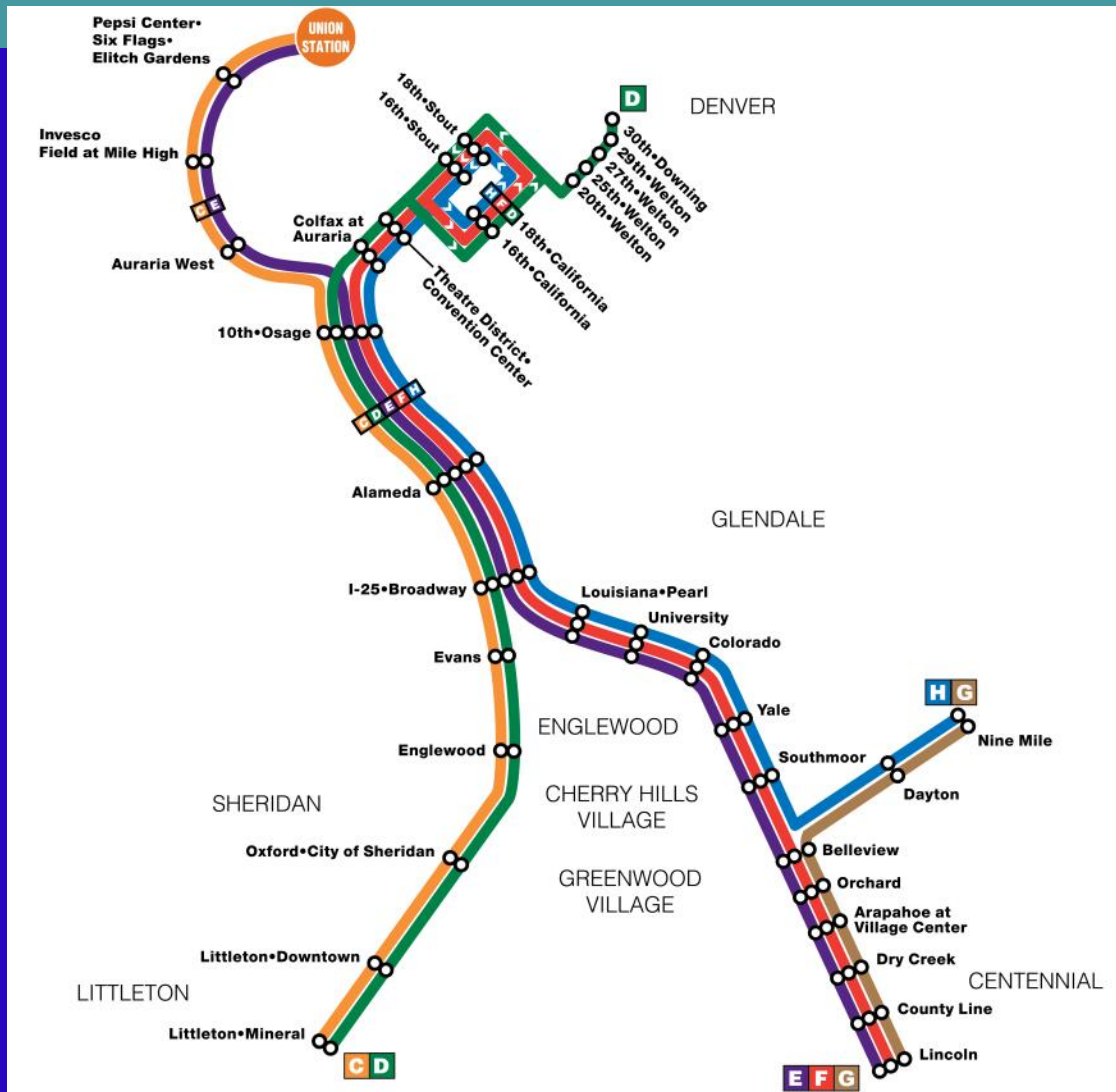




# Denver RTD LRT System, 2002



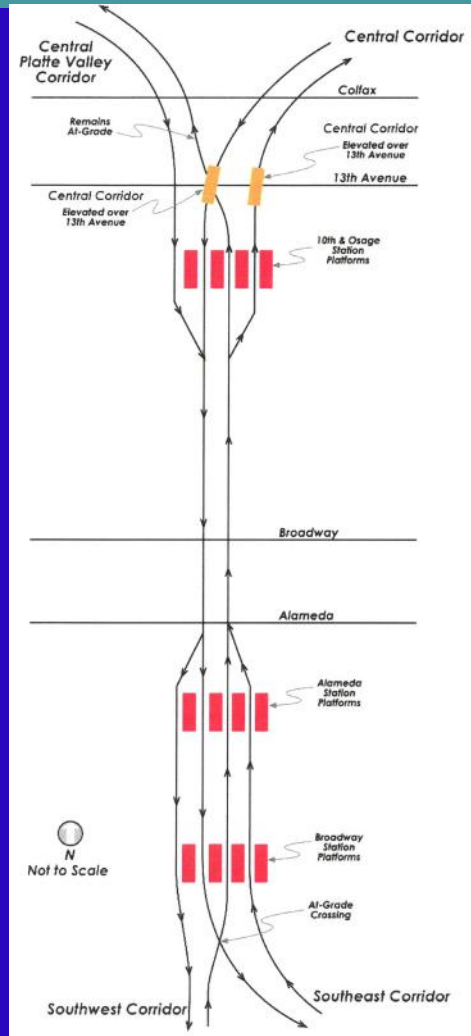
# Denver RTD LRT System, 2006



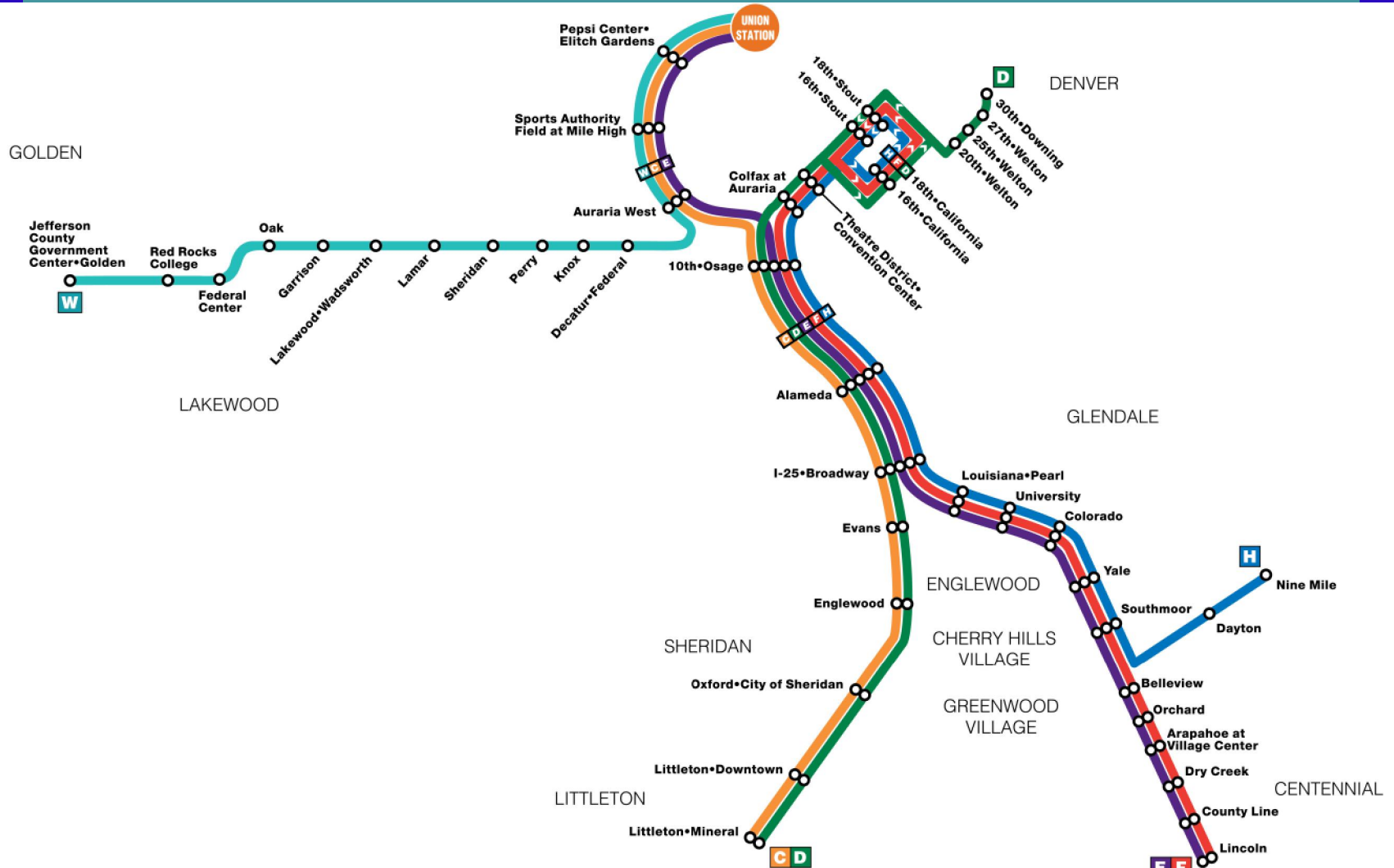
13<sup>th</sup> National Light Rail & Streetcar Conference



# FasTracks Central Corridor Improvements



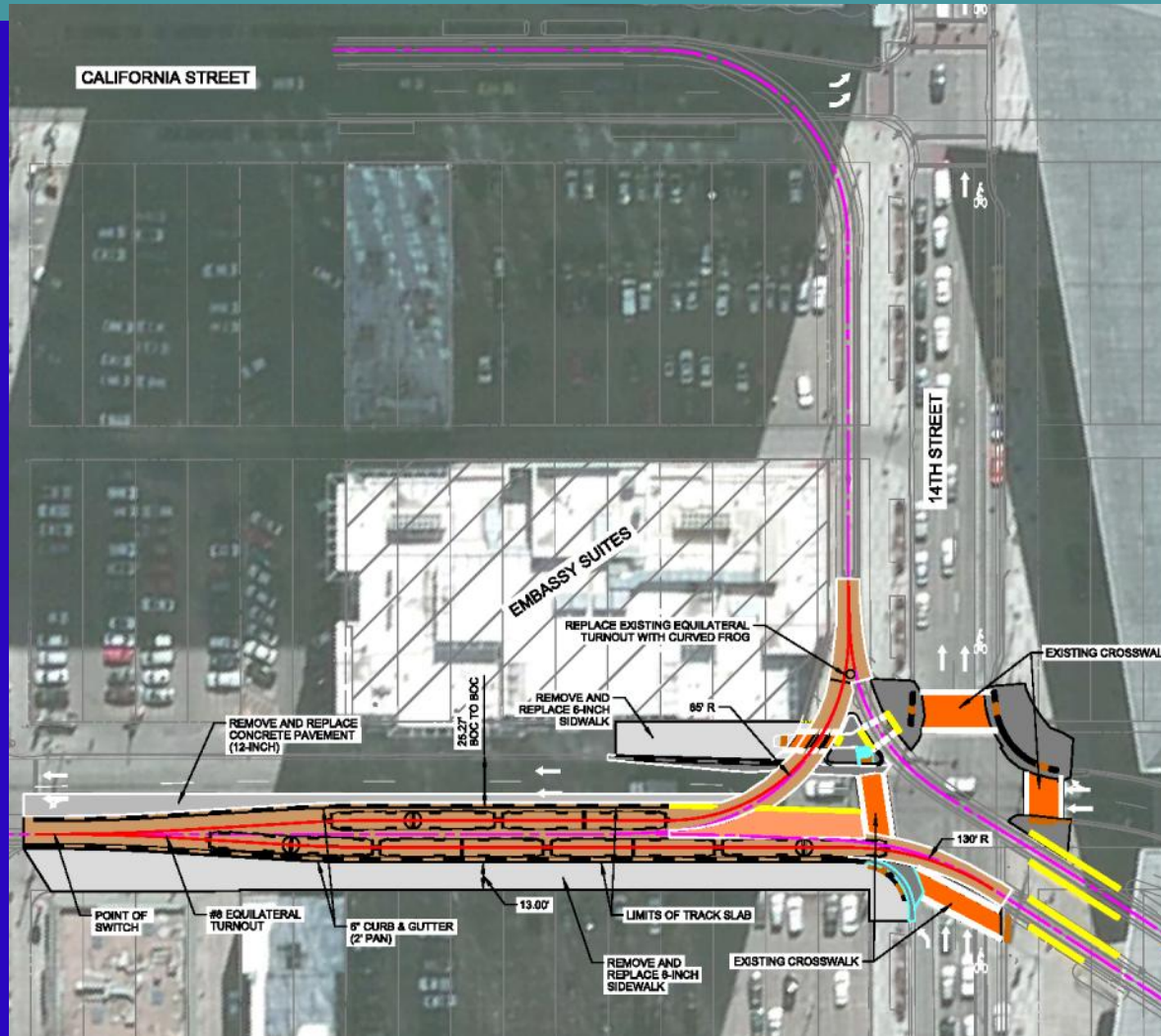
# Denver RTD LRT System, 2013



# Existing Central Corridor Stats

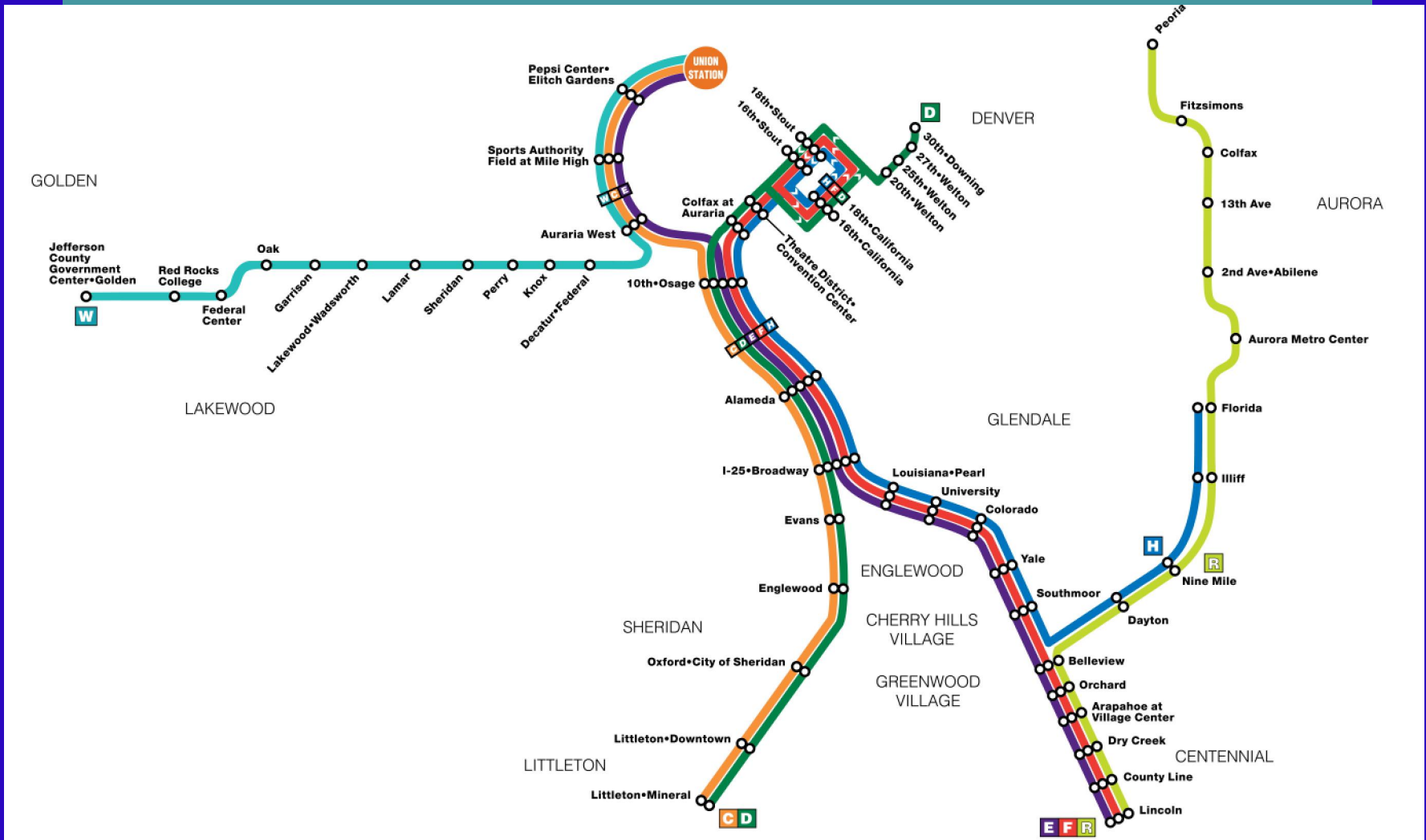
- 36,000 Weekday boardings  
(88,500 on entire system)
- 20 trains per hour/peak direction
- 70 LRVs per hour/peak direction

# Central Rail Extension Pocket Track, 2014



13<sup>th</sup> National Light Rail & Streetcar Conference

# Denver RTD LRT System, 2016







# The End

