

A Few Good Measures: What Decision Makers Will Use

Transportation and Economic Competitiveness

Transforming Data into Information: “A Case for Asset Management”

**5th International
Transportation Systems
Performance Measurement
and Data Conference
Denver, CO – June 2015**

**Cory Pope, P.E.
Utah Department of Transportation
corypope@utah.gov**

Today's Presentation

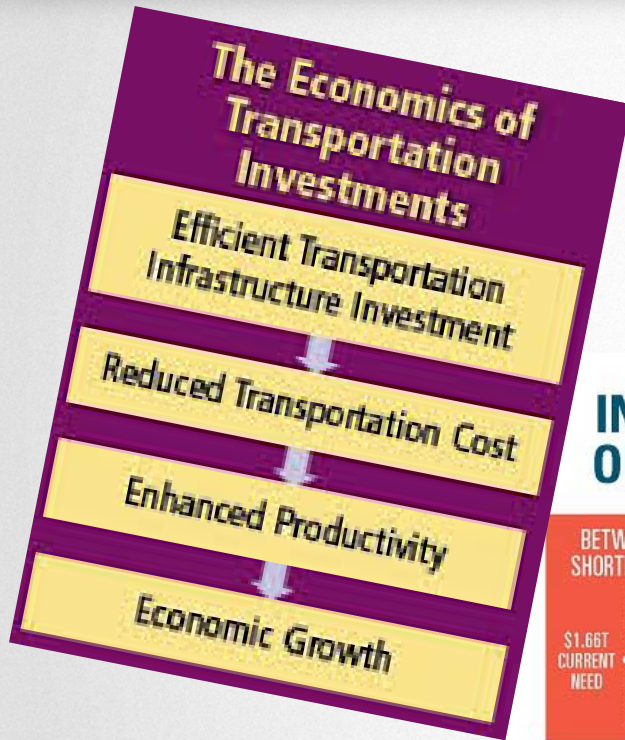
- **“Taking Care of What We Have” is Critical to Long Term Economic Health**
- **Power of Asset Management Data to Decision Makers**
- **Example of Success**

Comprehensive Transportation Planning

Stronger Economy



Transportation and Economy



INVESTING IN INFRASTRUCTURE OUR NATION'S ECONOMIC ENGINE

BETWEEN NOW AND 2020, THE INVESTMENT SHORTFALL WILL GROW TO \$1.1 TRILLION.

\$1.66T
CURRENT
NEED

\$1.1T GAP

\$2.75T
FUTURE
NEED

AGING AND UNRELIABLE INFRASTRUCTURE WILL INCREASE COSTS BY

\$1.2 TRILLION
FOR BUSINESSES

\$611 BILLION
FOR HOUSEHOLDS

BY INVESTING AN ADDITIONAL
\$157B PER YEAR THROUGH 2020,
WE CAN PREVENT

\$3.1 Trillion
loss in GDP

\$3,100
per year drop in personal
disposable income per
household

\$1.1 Trillion
loss in total trade

\$2.4 Trillion
drop in consumer
spending

3.5 Million
job losses

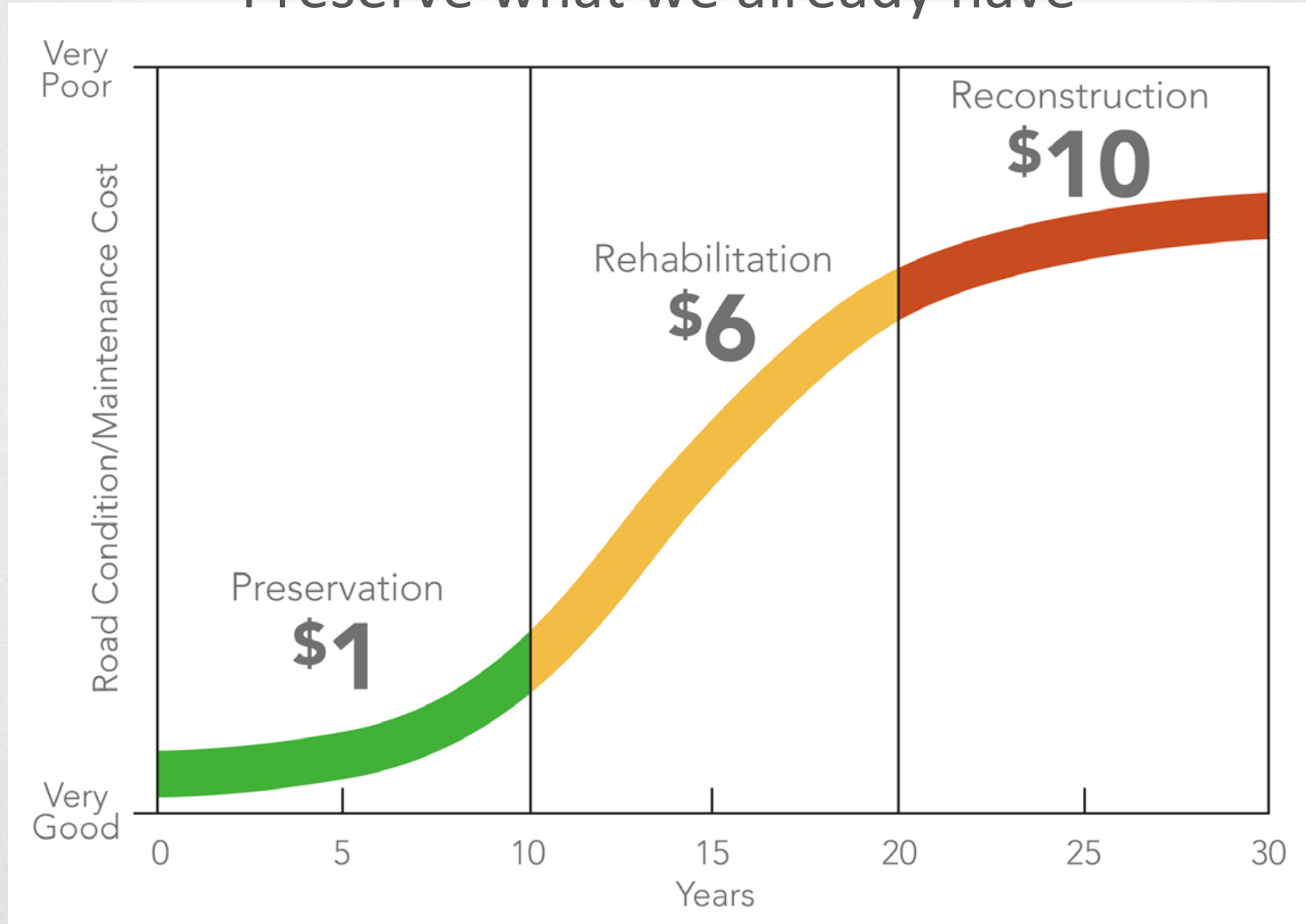


Learn more at
asce.org/failureeffect

ASCE
AMERICAN SOCIETY OF CIVIL ENGINEERS

Pay me now, or pay me later ?

Preserve what we already have

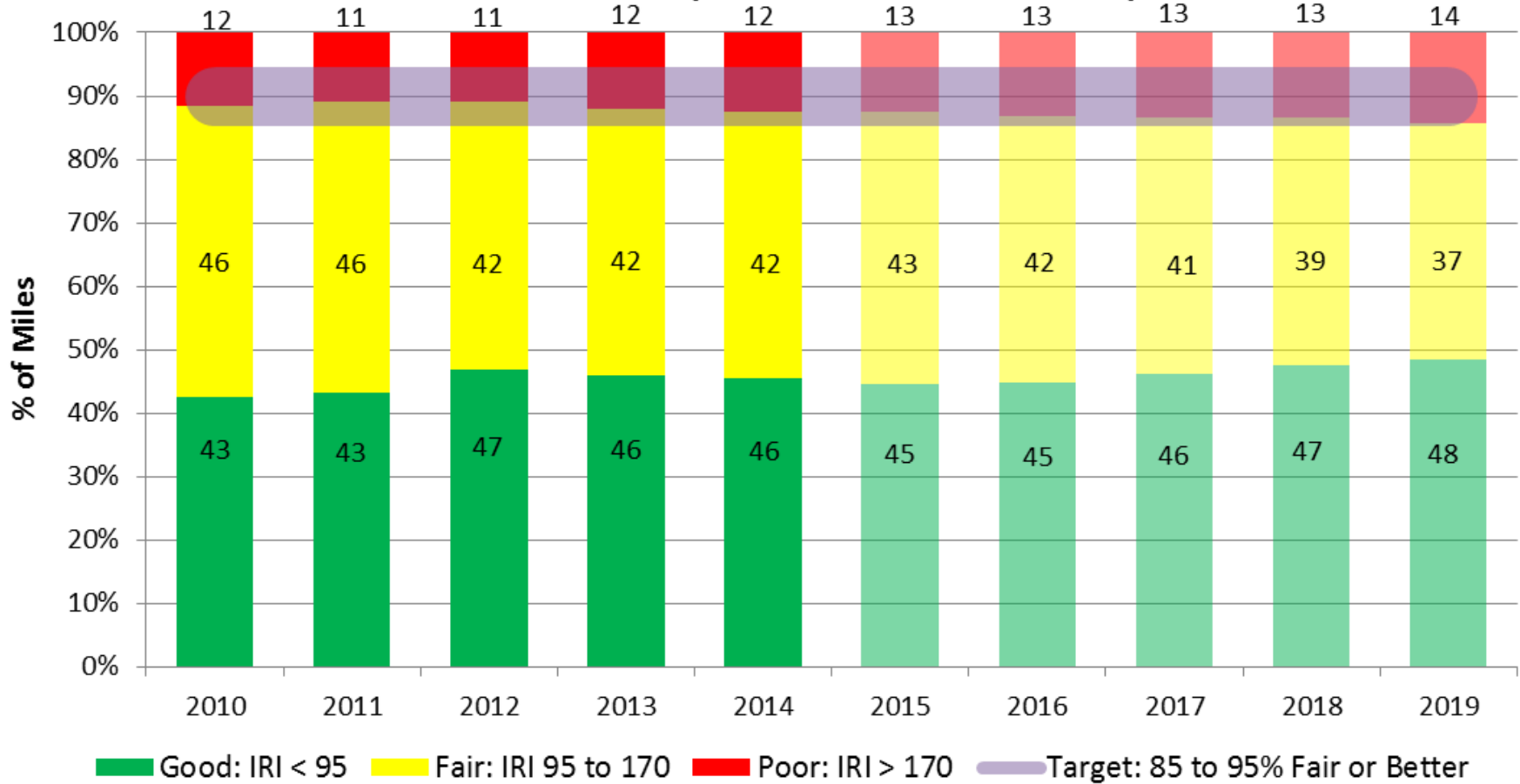


Hard Data - Repeatable
Faster, Cheaper, More Accurate
Measure and Report Results
Risk Analysis
Transparency

Preserve Infrastructure

Statewide System Condition (5,875 miles)

Ride Quality - Forecasted with 145 million/yr

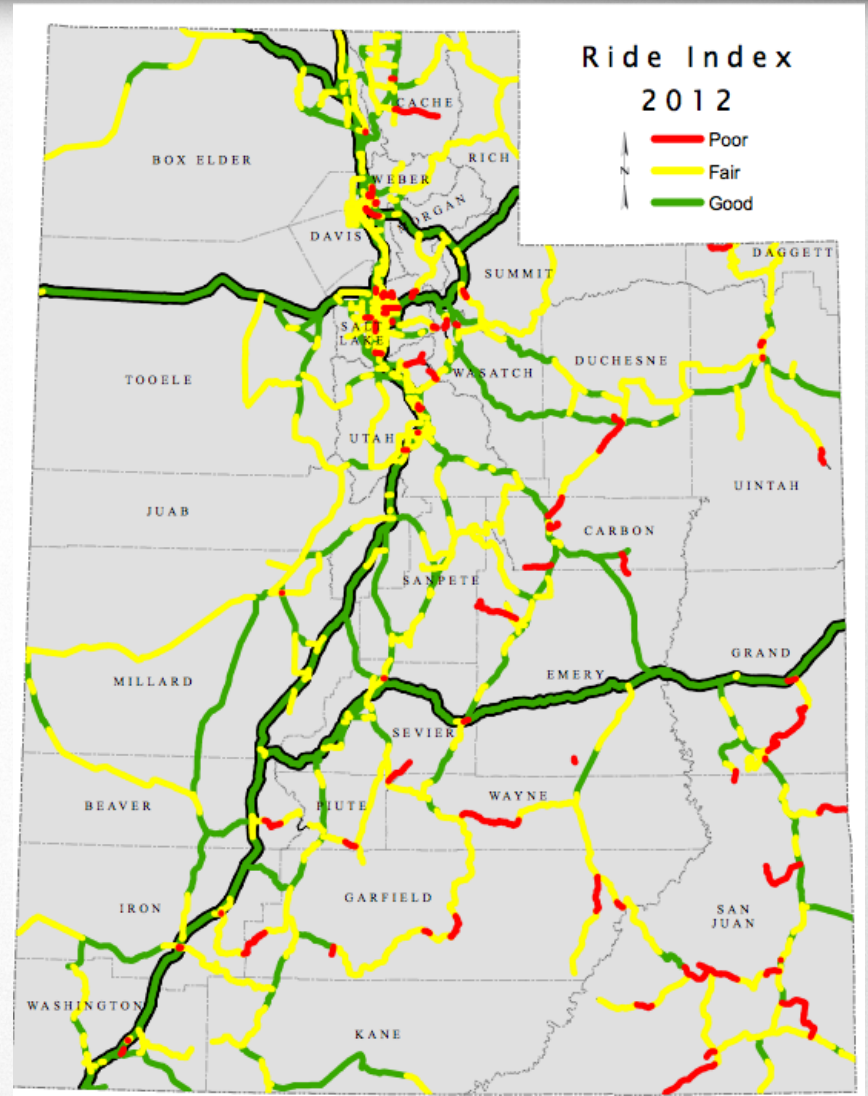


Preserve Infrastructure

Utah Road Conditions

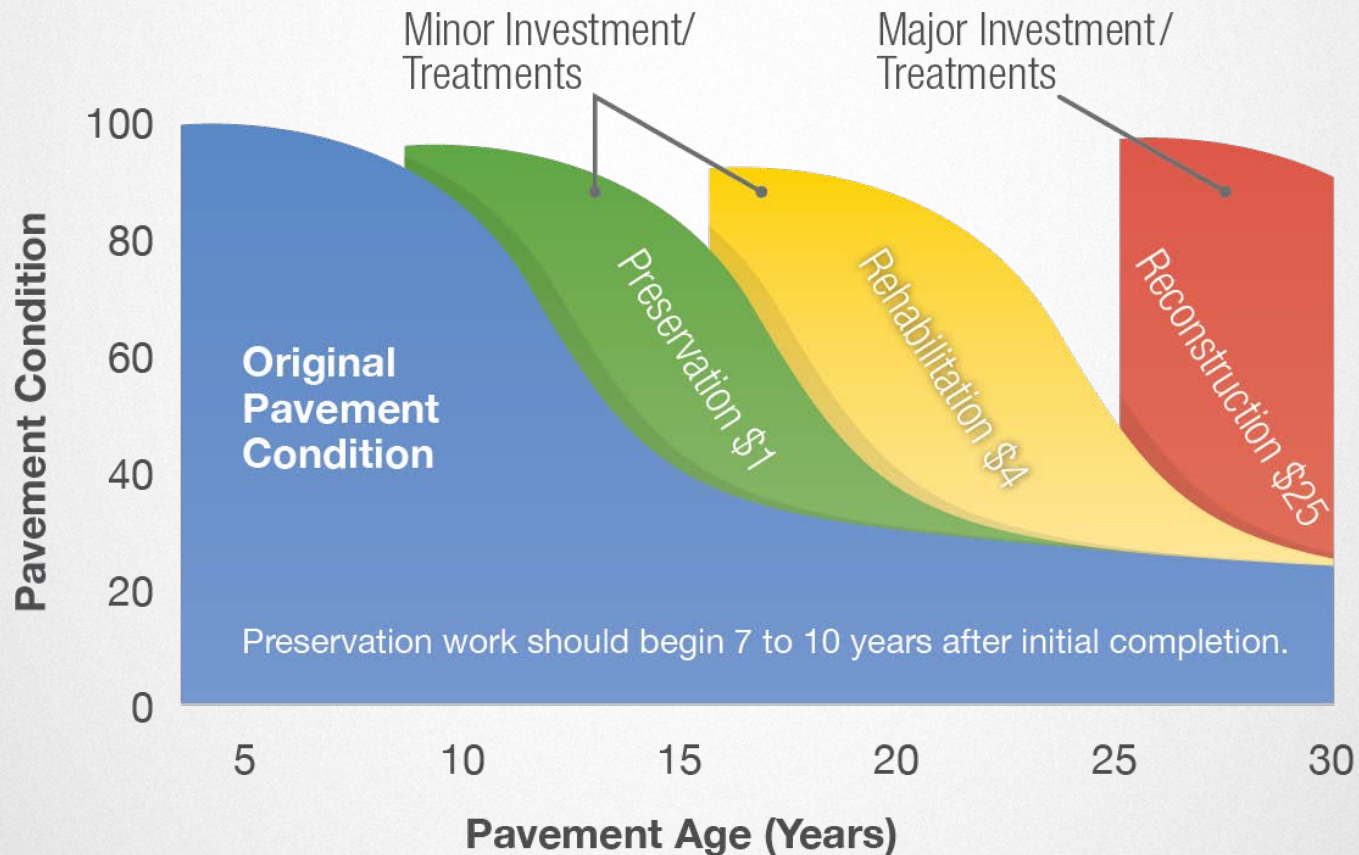
6,000 Centerline Miles

246 State Roads

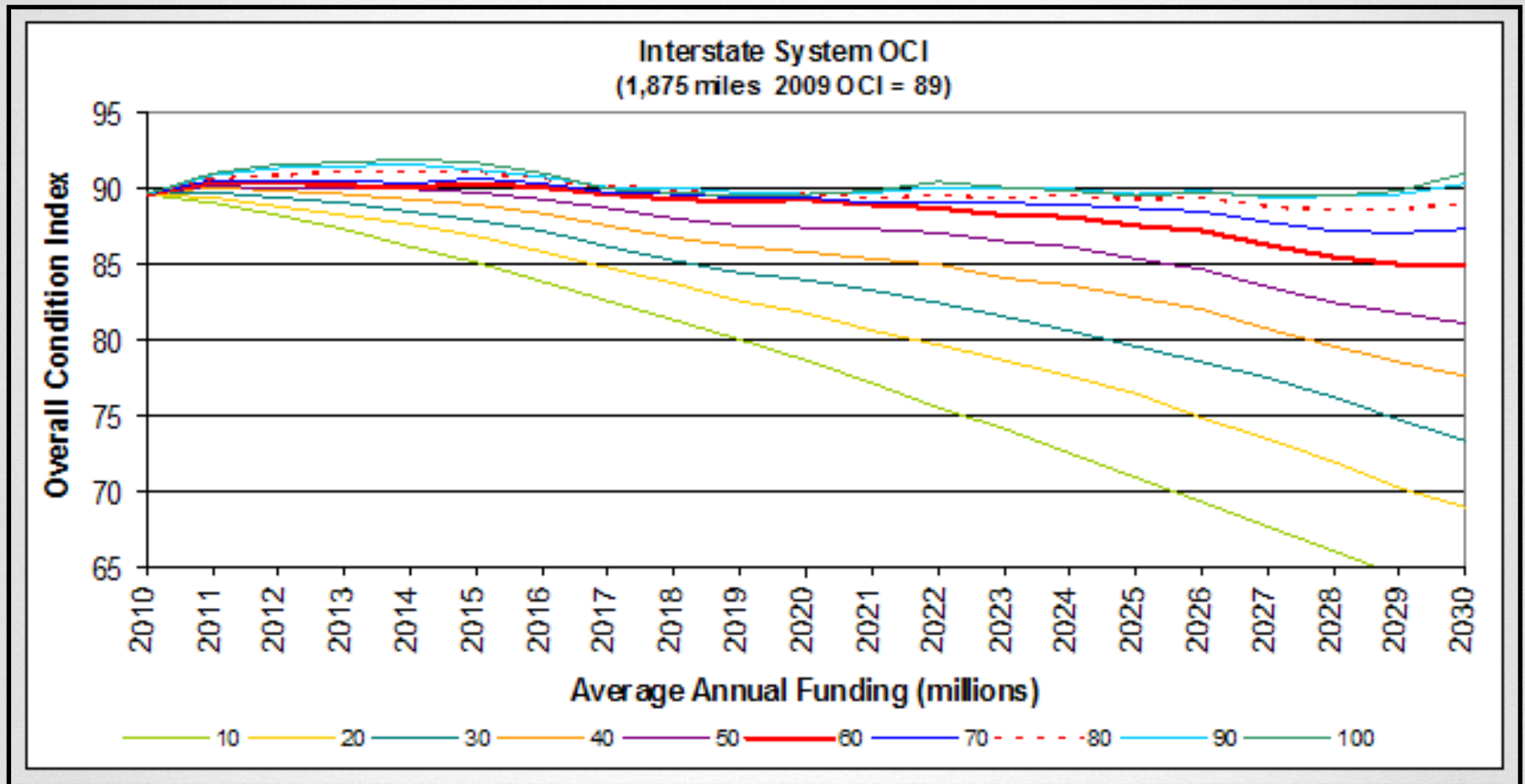


Preserve Infrastructure

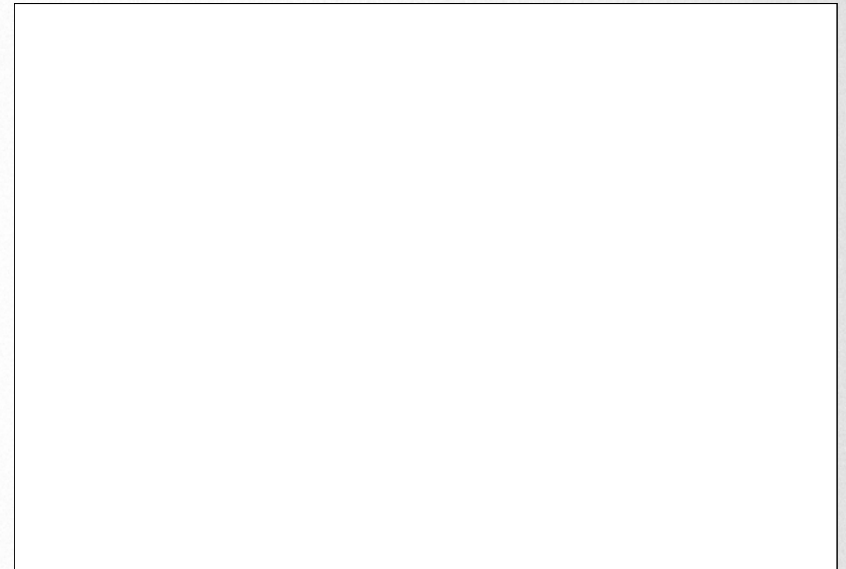
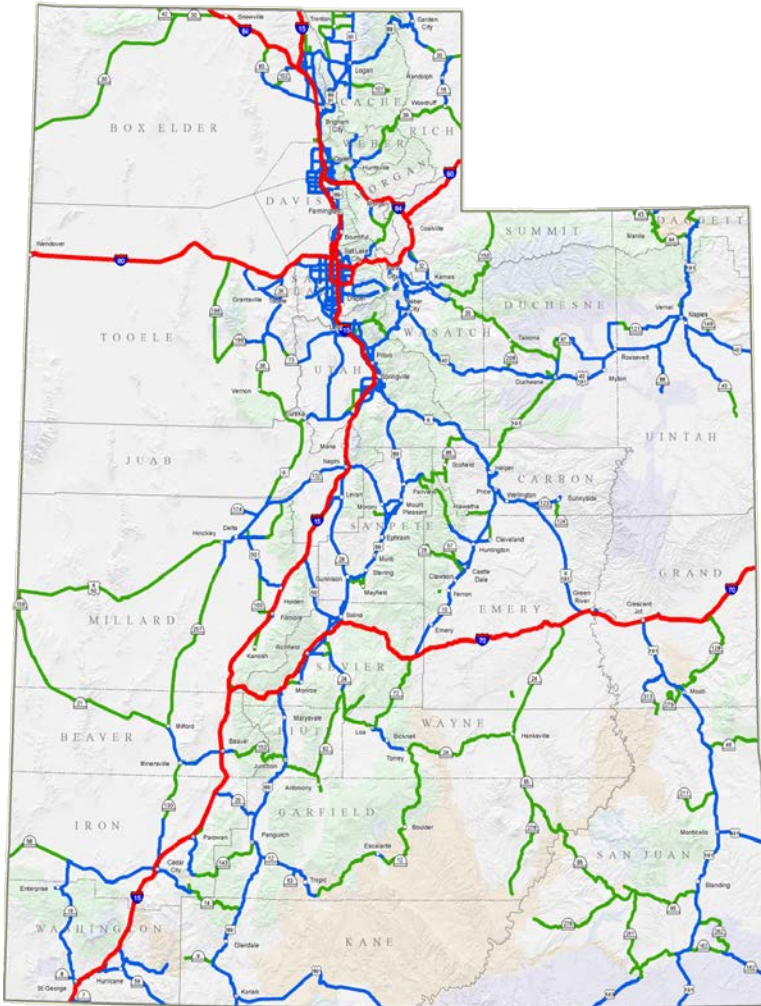
Extending Pavement Life



Diminishing Marginal Returns

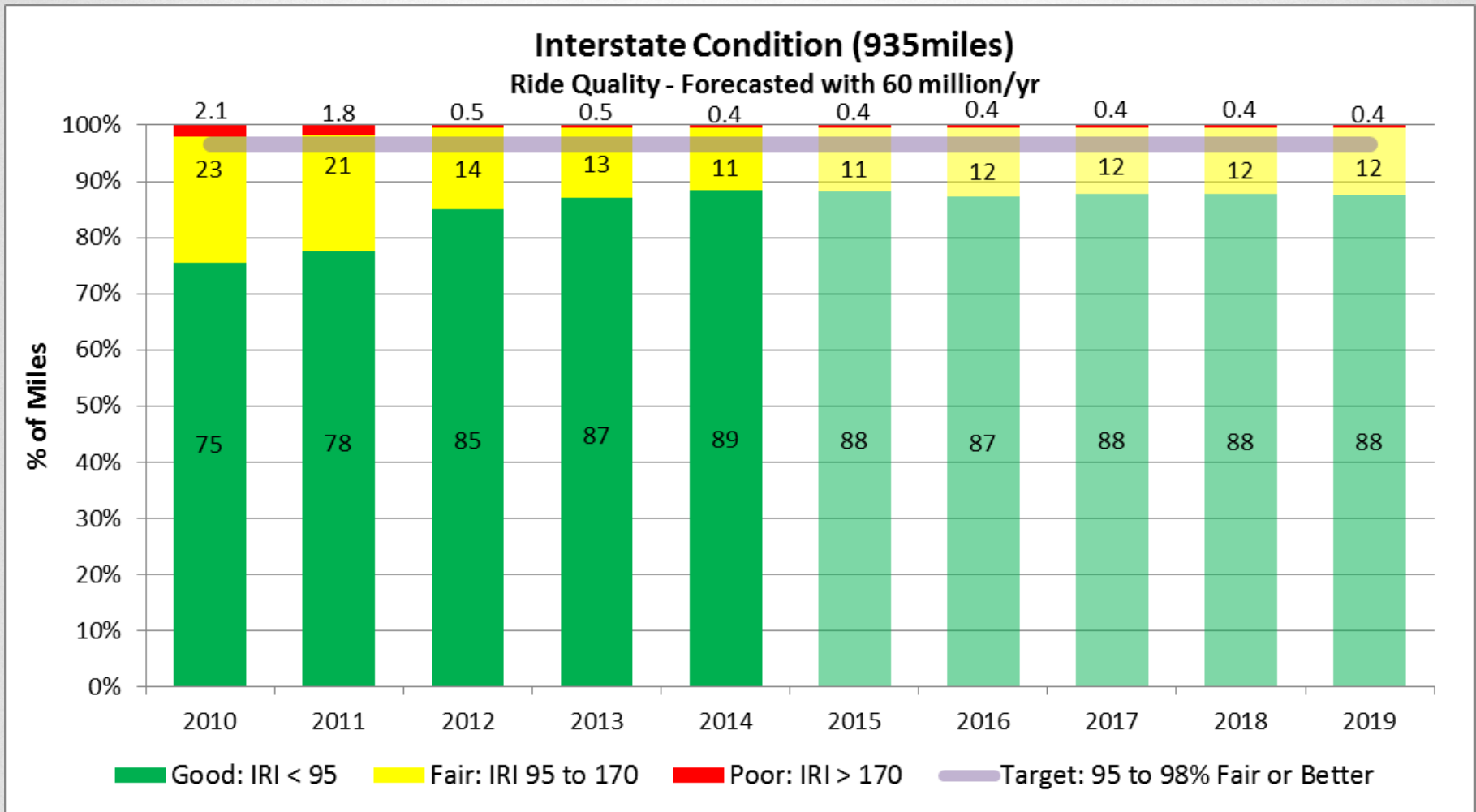


Prioritizing Limited Resources



- 3 Maintenance Levels to Prioritize Resources
- Interstates and Level 1:
 - 53% of all State Highway Lane Miles
 - 96% of all Vehicle Miles Traveled in Utah

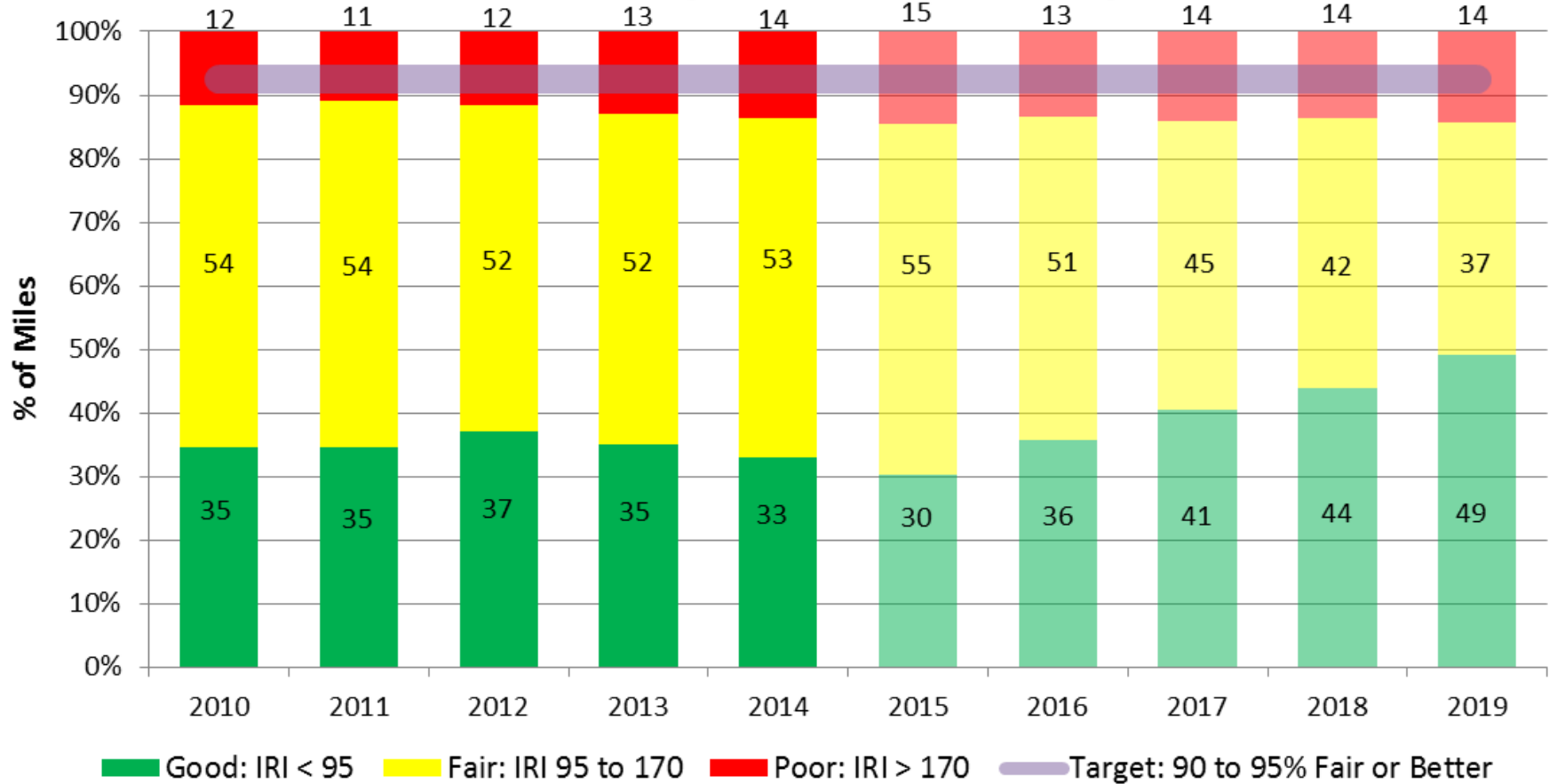
Preserve Infrastructure



Preserve Infrastructure

Level 1 System Condition (1,260 miles)

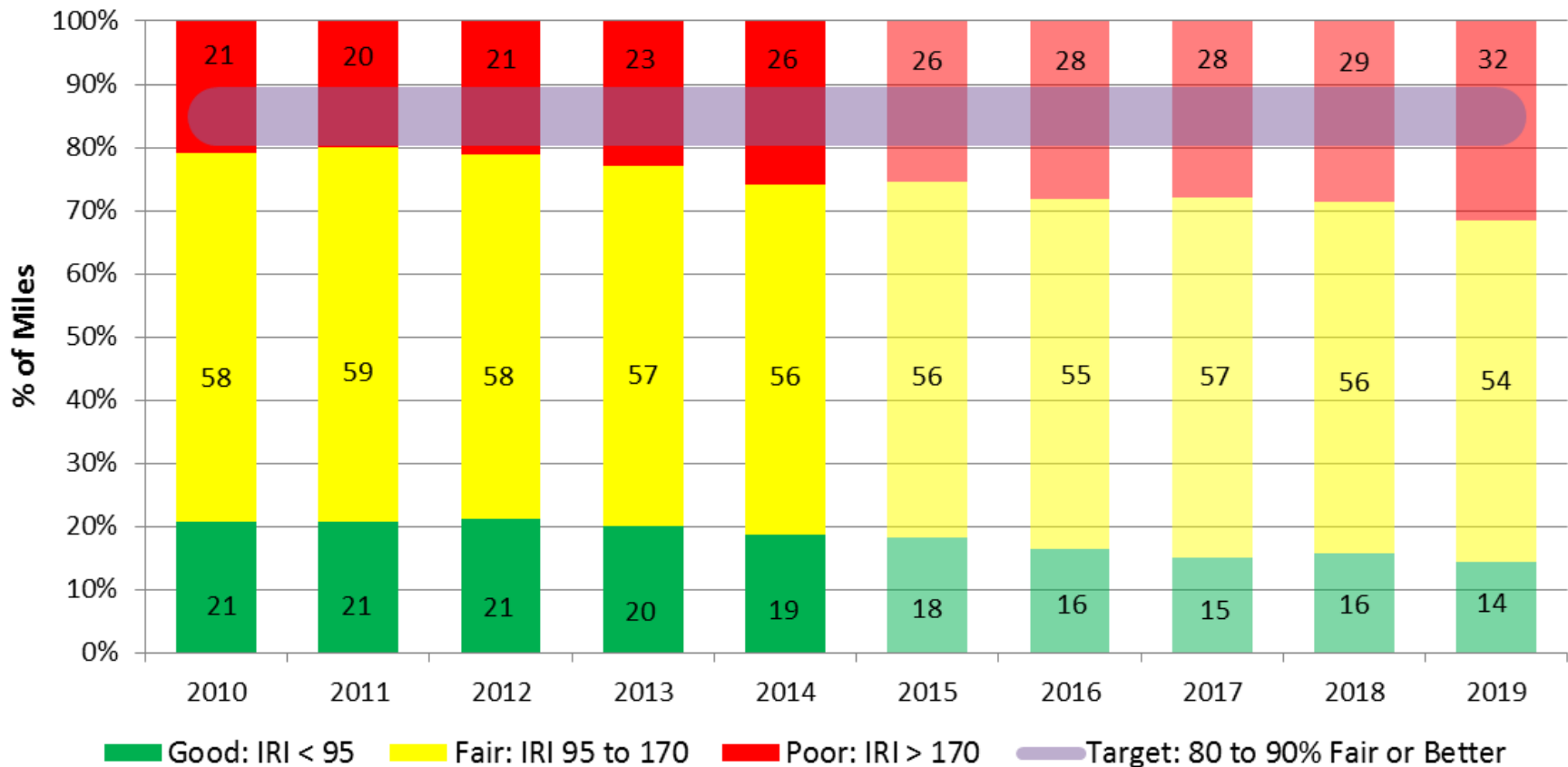
Ride Quality - Forecasted with 35 million/yr



Preserve Infrastructure

Level 2 System Condition (1,860 miles)

Ride Quality - Forecasted with 10 million/yr



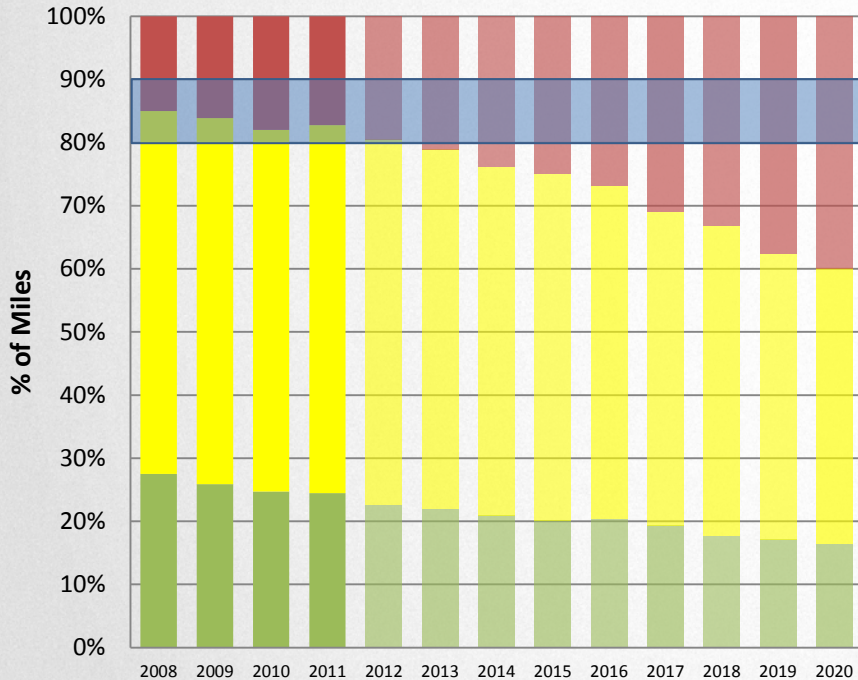
Funding Scenario Comparison

Historical - Projected

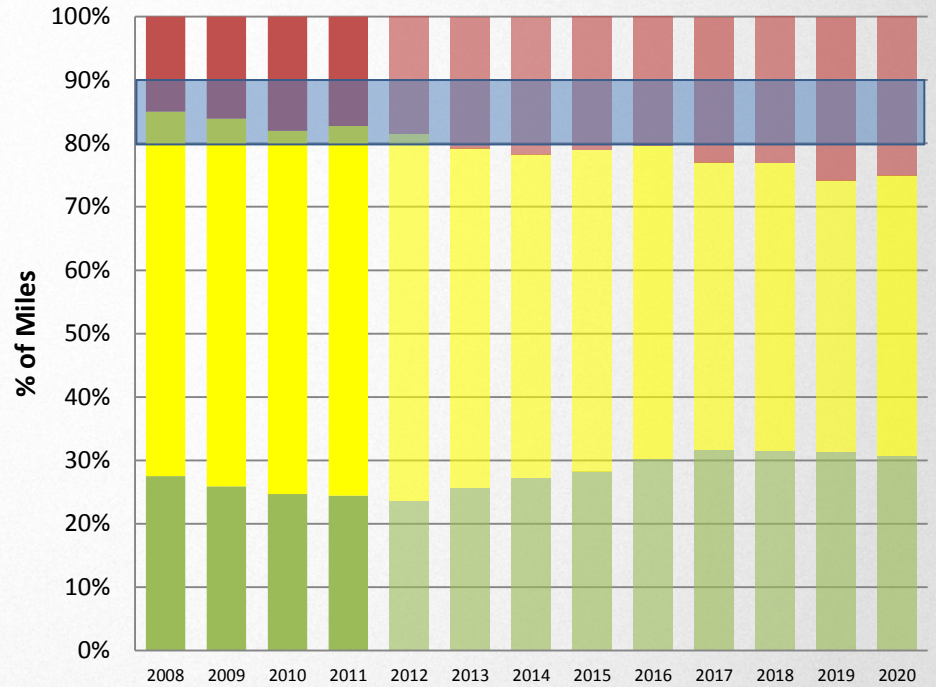
(Level 2 - 2,735 miles)

(Level 2 - 2,735 miles)

Projected at Current Funding Levels

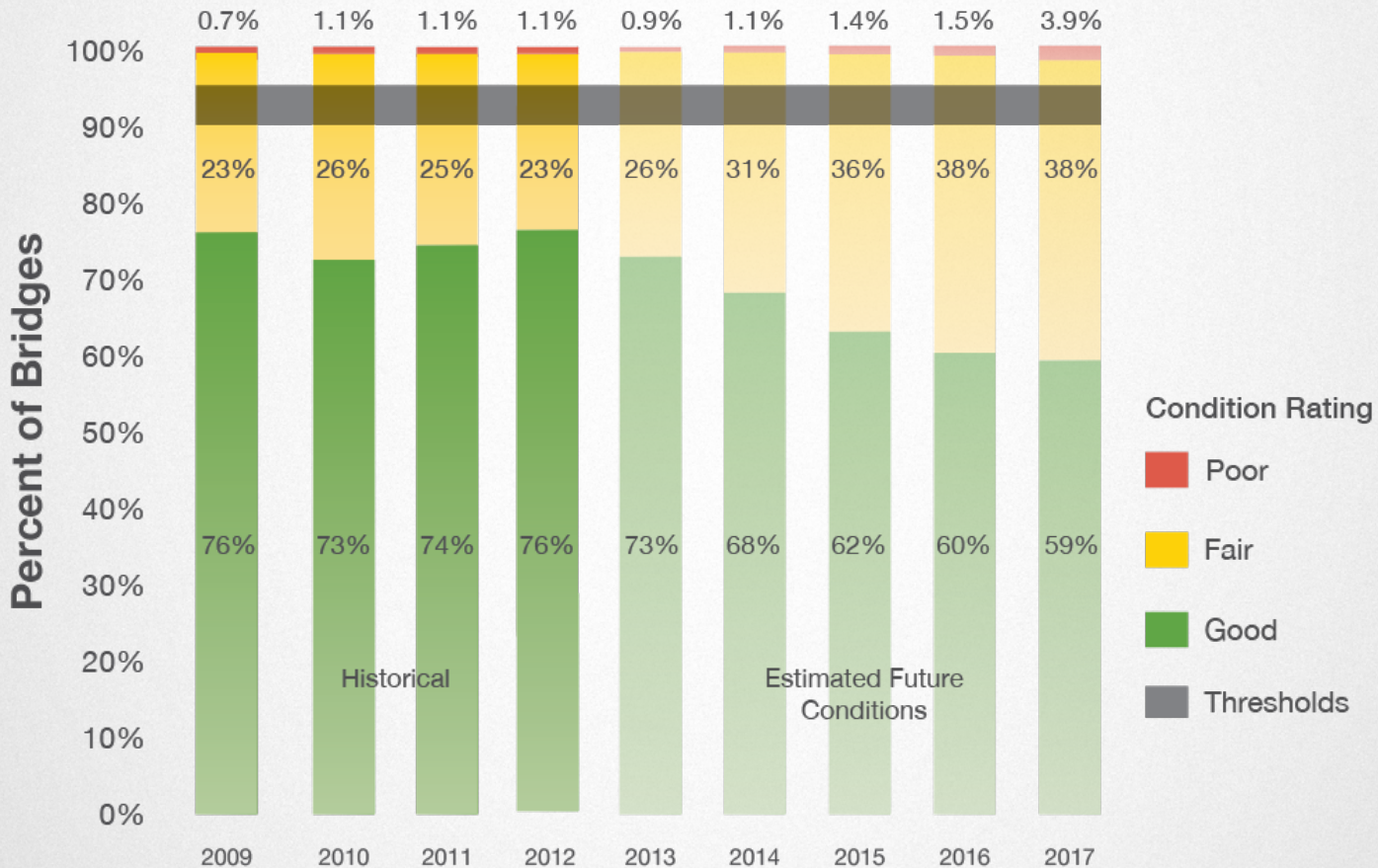


Projected w/ Additional 40 million / yr



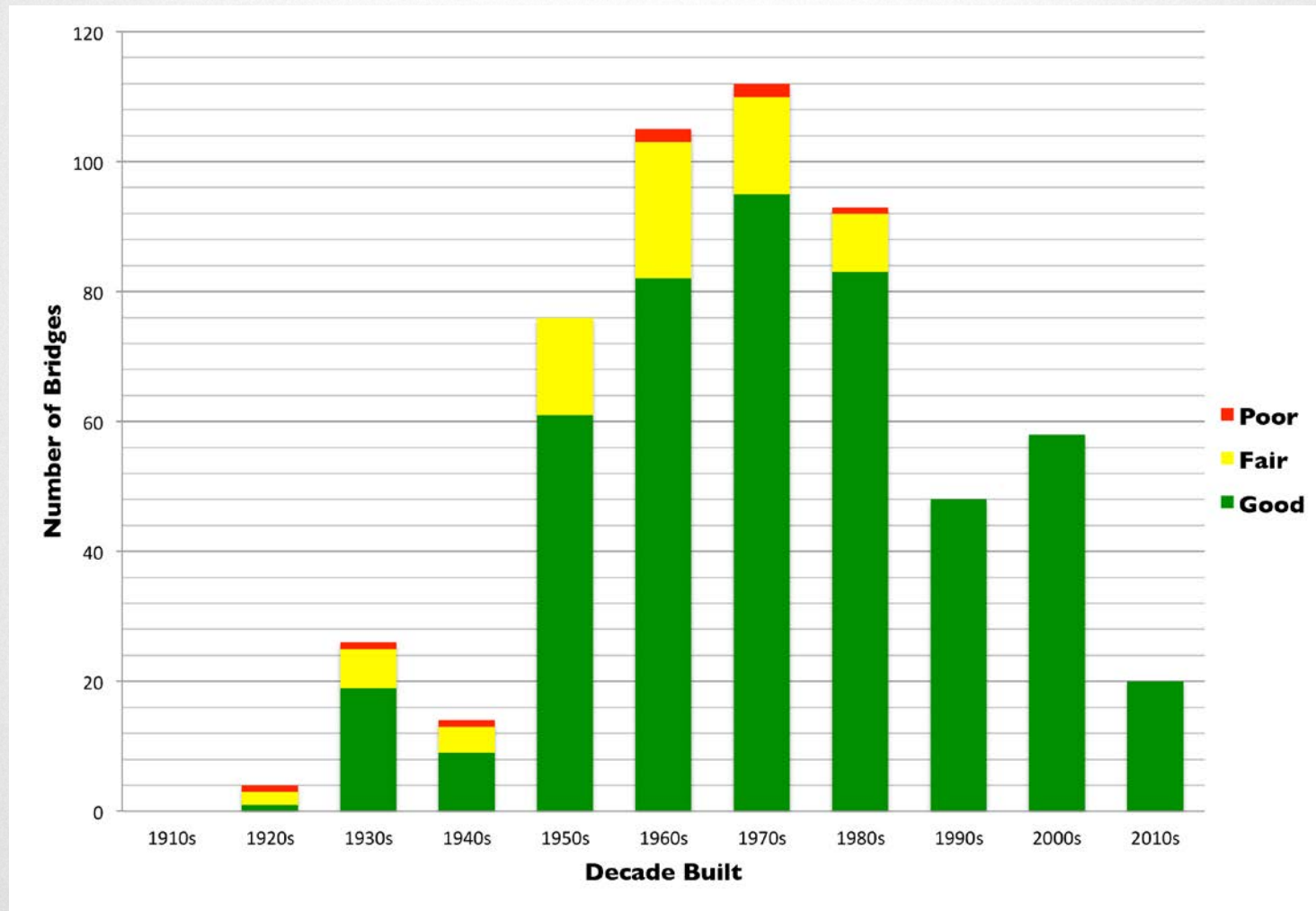
Preserve Infrastructure

Condition of UDOT Bridges

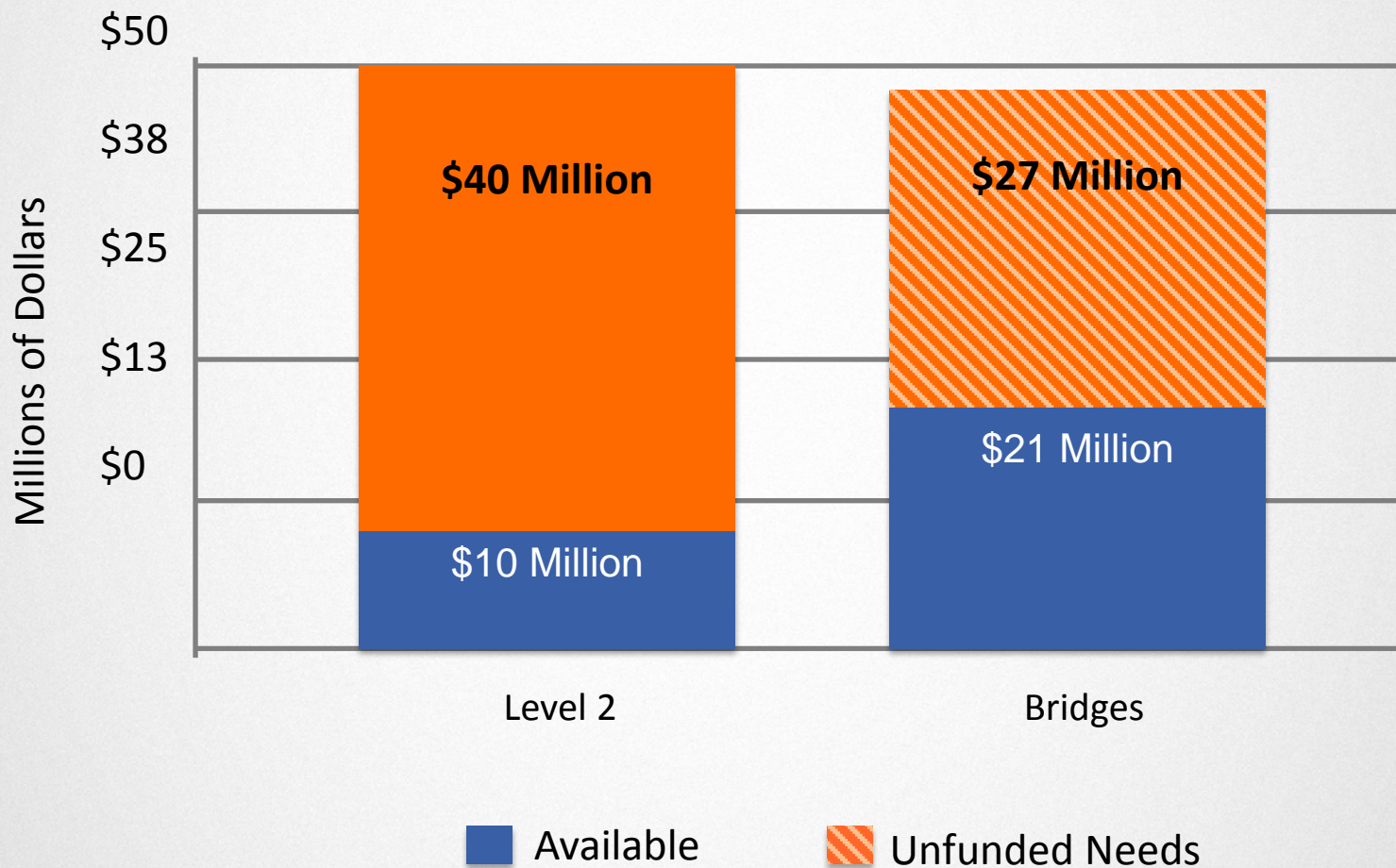


Preserve Infrastructure

Age Distribution of State Bridges



Annual Pavement and Bridge Needs



- **H.B. 362 – Transportation Infrastructure Funding**
 - **Gas Tax Reform and Increase**
 - **Percentage of distributor price**
 - **Floor Ceiling Volatility Safeguard**
 - **Local Option Transportation Sales Tax**
 - **Transit and highways for cities and counties**
 - **Level 2 Road Designation Eliminated**
 - **Sustainable proactive approach**

A Few Good Measures: What Decision Makers Will Use

Transportation and Economic Competitiveness

Transforming Data into Information: “A Case for Asset Management”

Thank You

**5th International
Transportation Systems
Performance Measurement
and Data Conference
Denver, CO – June 2015**

**Cory Pope, P.E.
Utah Department of Transportation
corypope@utah.gov**