



The Changing Logistics Ecosystem: *Complexity Drives Data Use*

Page Siplon
Chief Executive Officer

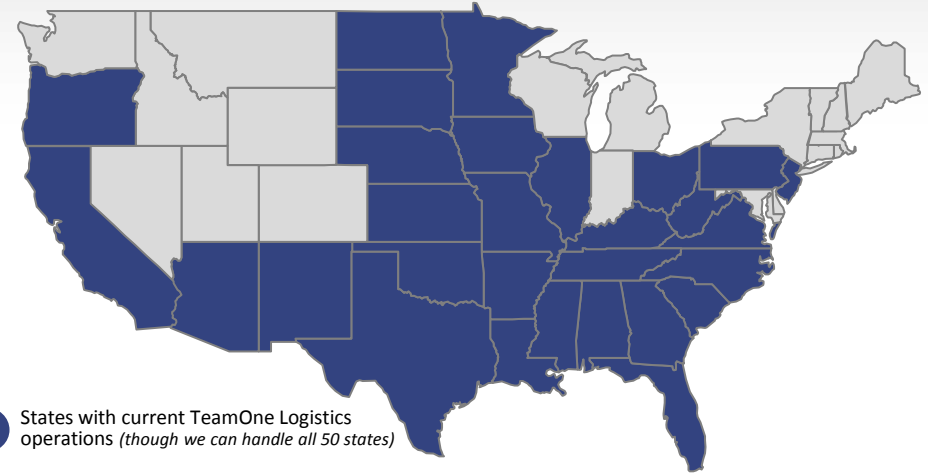
TeamOne Logistics Overview

TeamOne Logistics designs and manages workforce solutions to minimize the risk, cost, and complexity of your logistics enabled business.

TeamOne Logistics has two primary solution models:

- 1) Integrated Workforce Solutions:** We take on all employment related risks through a unique long-term “*employer of record*” model designed for your specific needs.
- 2) Temp-to Hire:** We recruit and on-board safe, qualified individuals to fill fulltime positions.

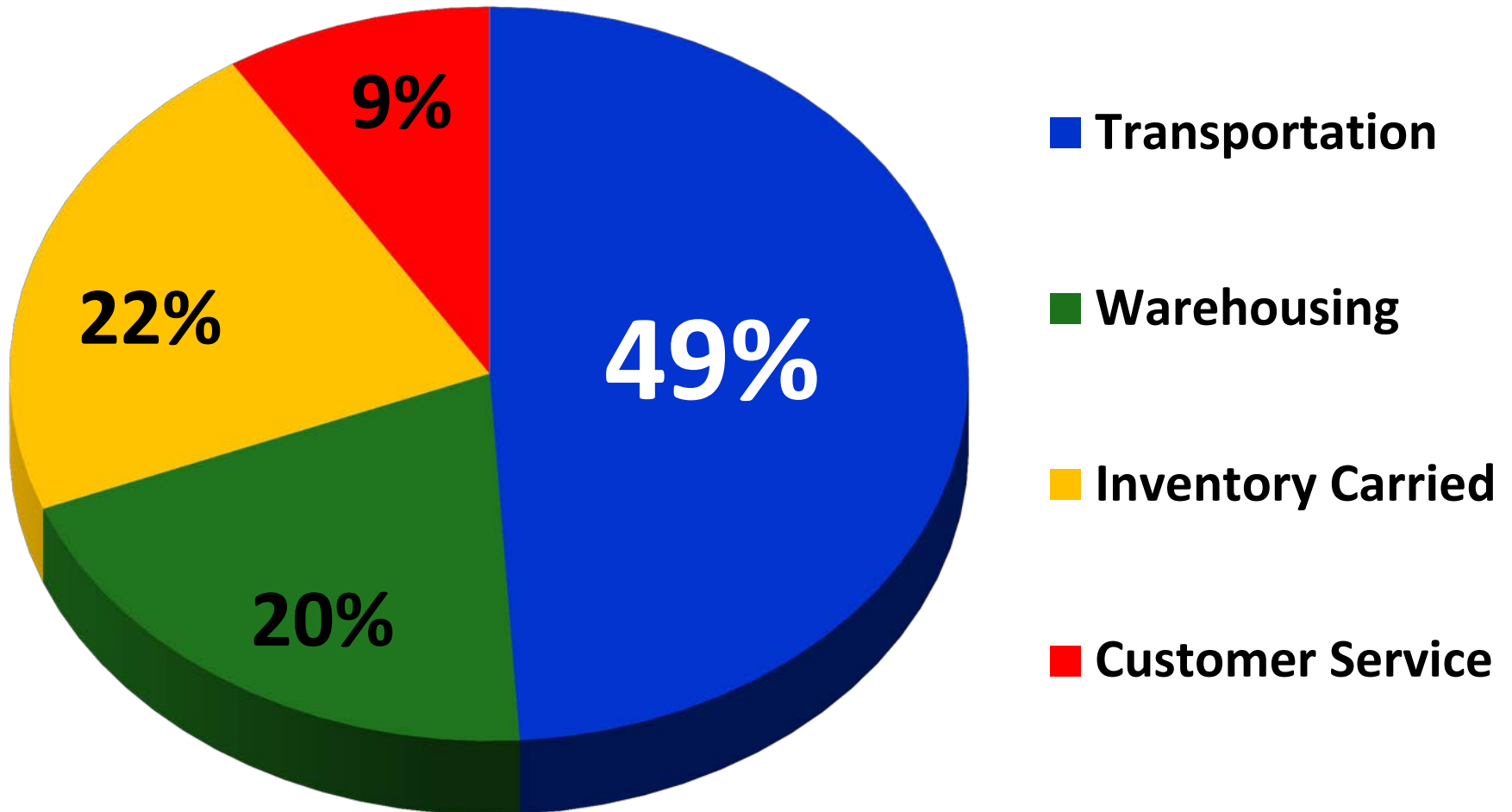
National presence with **850 employees** currently operating with **clients in 87 locations across 29 states.**



- **Founded in 2003 by logistics executives** and is headquartered in Alpharetta, Georgia (*metro-Atlanta*)
- Expert recruiters and trainers located throughout the US, with a combined **300 years of logistics industry experience.**
- **Current clients range** from operators of private truck fleets to 3PL’s, carriers, distributors, manufacturers, and transportation companies.
- Proud to **never have lost a client** in over a decade.



10% of TOTAL sales revenue for any company goes to “Logistics”



CHANGE

AHEAD

What's Changing?

Infrastructure

Investment

The US population is currently over

325 Million People



70% of consumers live east
of Dallas and Chicago



...by the year 2050

**+ 100 Million People in USA
X 40 Tons/Person**

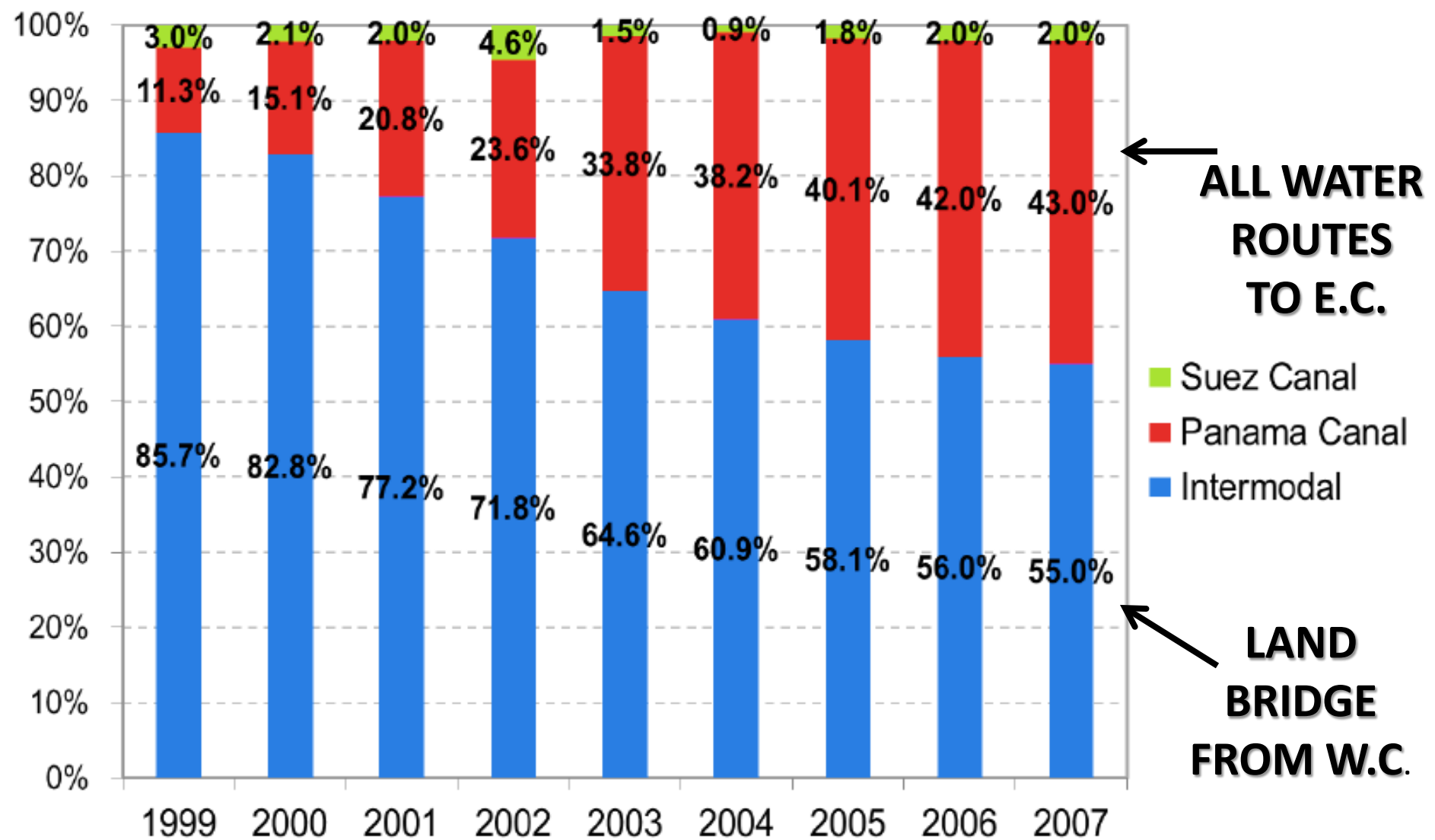
4 BILLION TONS IN USA

*^
More*



Cargo Origin = CHINA

Cargo Destination = ATLANTA



\$7 Billion in added costs because of shallow harbors in 2010, *\$14 Billion by 2040*

\$20 Billion spent annually by private freight railroads

\$27 Billion in cost to U.S. businesses due to deficient highways in 2010, *\$1.3 Trillion by 2040*

\$4 Trillion projected loss to U.S. GDP by 2040 due to lack of investment in infrastructure

What's Changing?

Consumers

Your WORKFORCE & Your CUSTOMERS



*I'll have a venti
triple-shot,
half-caff,
no whip
mocha...
extra hot.*



**Consumers Expect
Personalization**





FREE SHIPPING AVAILABLE ON ORDERS OF \$49 OR MORE! SEE DETAILS

Custom Shoes / Style





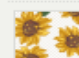

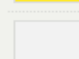




POST TO GALLERY PRINT



\$65.00

SLIP-ON MEN

1. START CUSTOMIZING:

-  VAMP (ZEBRA BLACK/WHITE)
-  QUARTER (POLKA DOTS AQUA)
-  HEEL COUNTER (SUNFLOWER)
-  VAMP BINDING (SOLID CYBER YELLOW)
-  FOXING (SOLID TRUE WHITE)
- 
-  FOXING STRIPE (SOLID FORMULA ONE)
-  ELASTIC GORE (SOLID BLACK)
-  COLLAR LINING (SOLID TRUE WHITE)

0

0

Live Chat

2. SIZE:

--



\$219 USD + 365 DAY RETURN OR REMAKE

SAVE ADD TO CART



FEEDBACK

undo rotate

MATERIALS STYLE HEEL EXTRAS

Select a panel (or click the part of the shoe):

T-bar

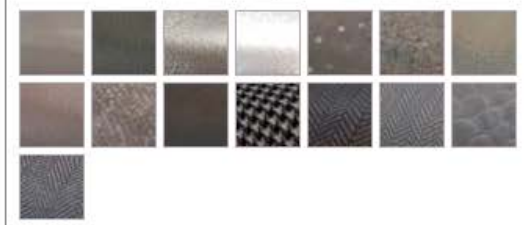
View by texture View by color

NEW Tropical Punch

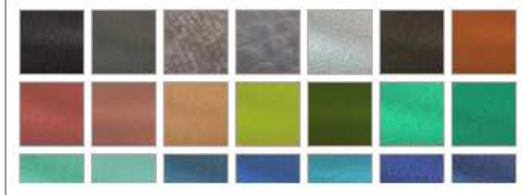


T-bar: Soft leather - Pink

NEW 15 Shades of Prey



Soft leather



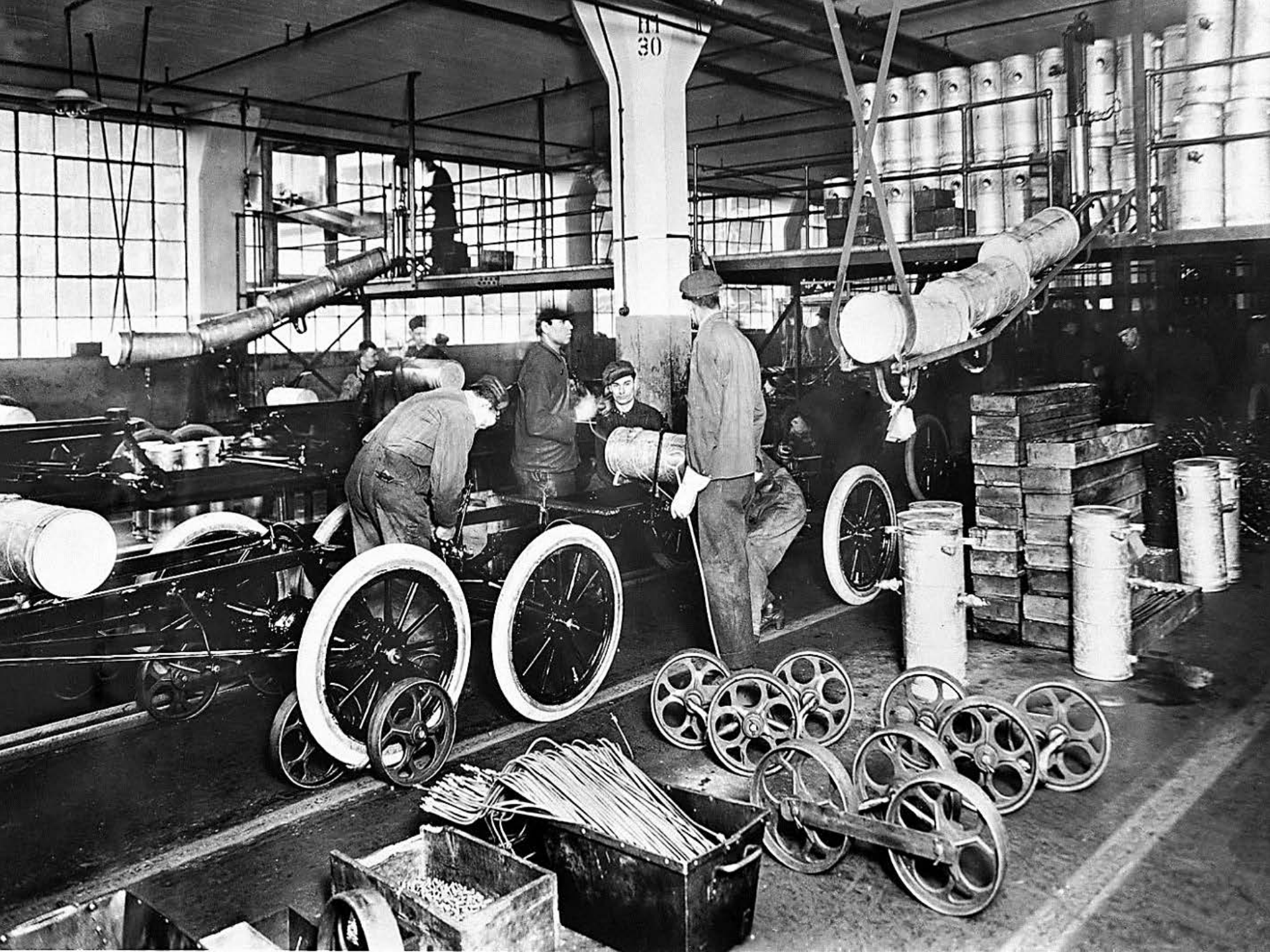


At the end of 2013 there were
more mobile devices on planet
earth than
HUMANS!



What's Changing?

Manufacturing



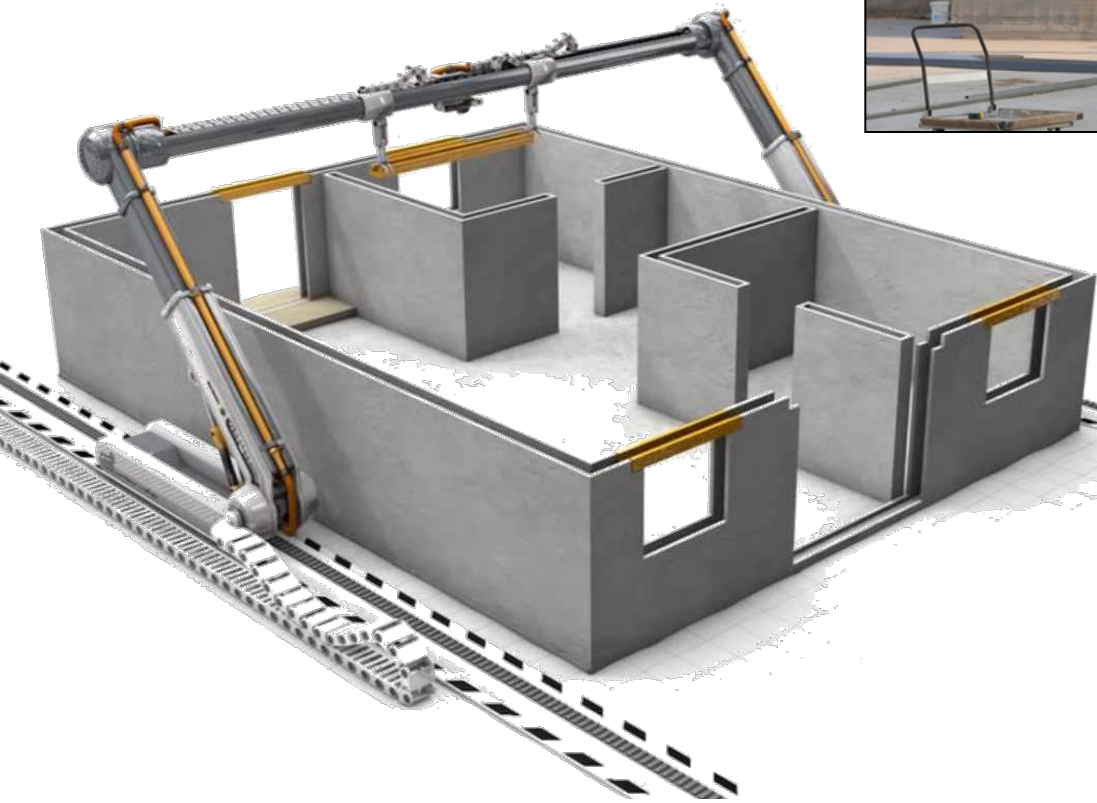


teamOne

NOW...



- **10 Homes**
- **24 Hours**
- **\$5,000 Each**



... SOON

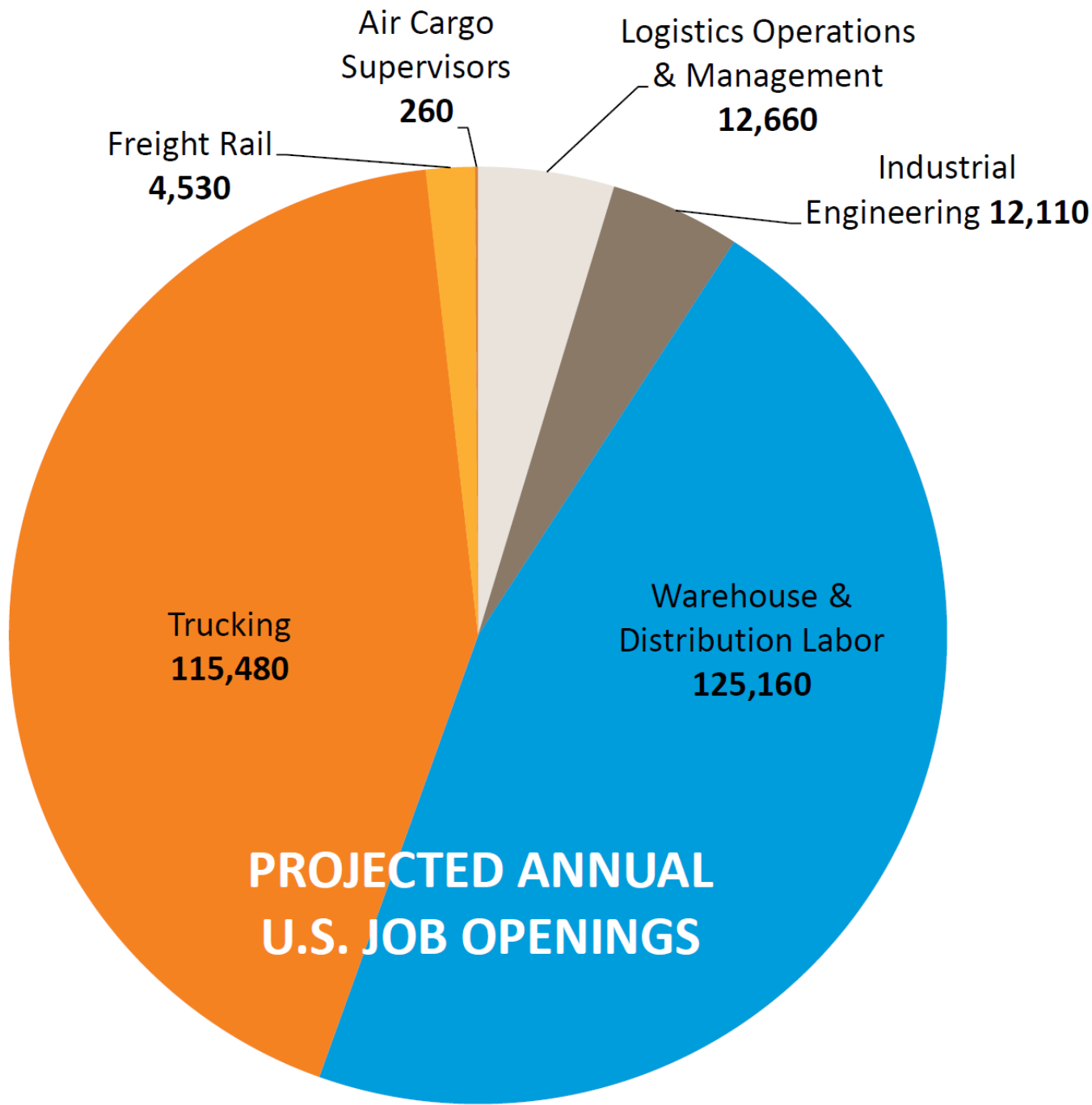
What's Changing?

Workforce

Supply & Demand

HUMAN INFRASTRUCTURE



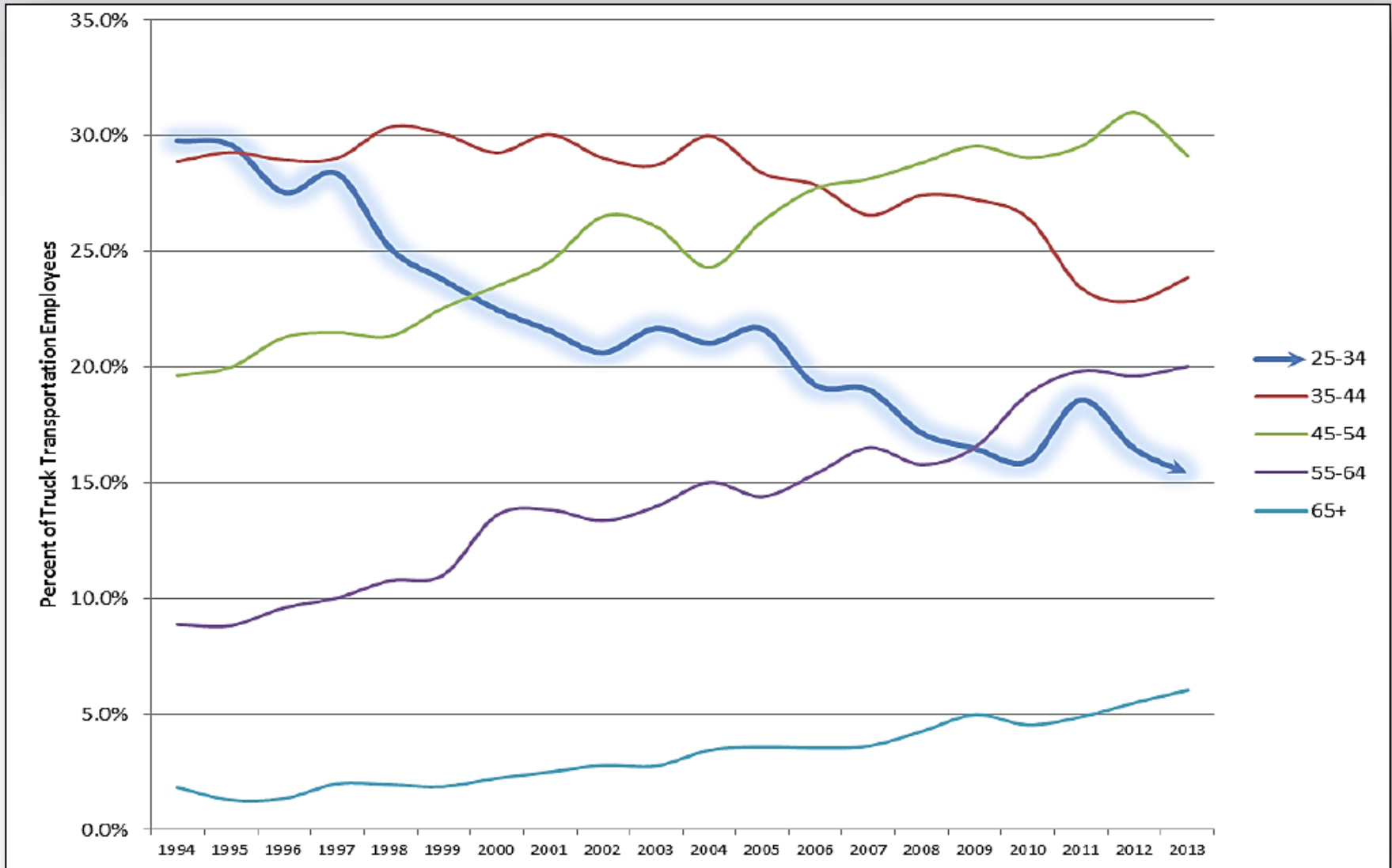


**270,000
JOB
OPENINGS
PER YEAR**

**1 MILLION
JOB
OPENINGS
BY 2018**



Truck Driver Age Shift



SOURCE: ATRI

FOUR PILLARS OF A RESILIENT SUPPLY CHAIN

- 1) Visibility:** Being able to track and monitor supply chain events and patterns as they happen, or even before they happen.
- 2) Flexibility:** Being able to adapt quickly in response to problems without significantly increasing operational costs.
- 3) Collaboration:** Ability to work effectively with supply chain partners, and share common best practices.
- 4) Control:** Having robust policies, monitoring, and control mechanisms to help ensure proper procedures and processes are actually followed.



Page Siplon

psiplon@teamonelogistics.com

www.TeamOneLogistics.com

A row of white semi-trucks parked in a lot, viewed from a low angle. The trucks are lined up, and their chrome grilles and headlights are visible. The background is a clear blue sky.

Thank you!

Questions?

www.teamonelogistics.com • info@teamonelogistics.com • 770.232.9902