

Walking, biking, and school travel in low income neighborhoods

New data from the Los Angeles region

Herbie Huff, Research Associate
UCLA Lewis Center for Regional Policy Studies
UCLA Institute of Transportation Studies

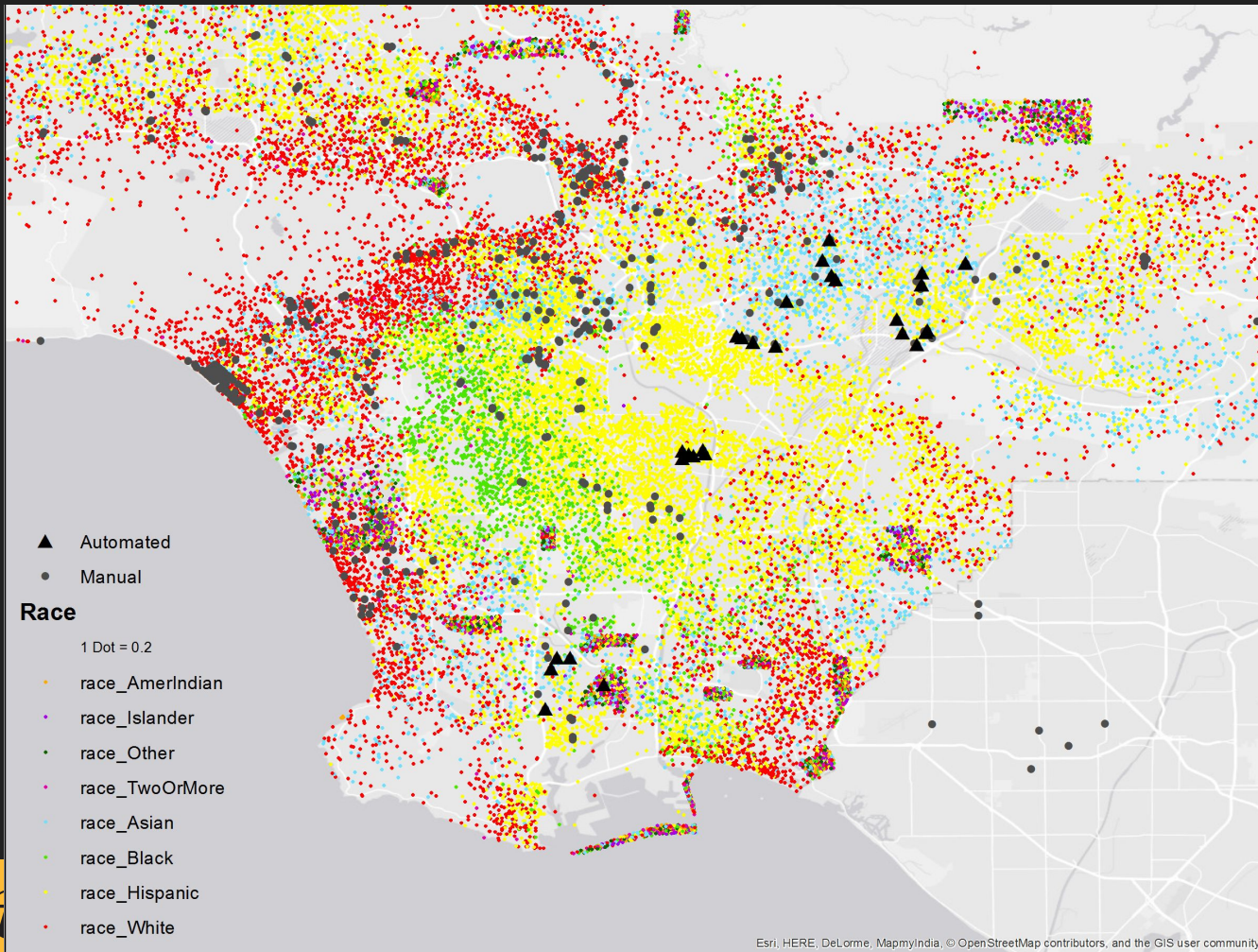


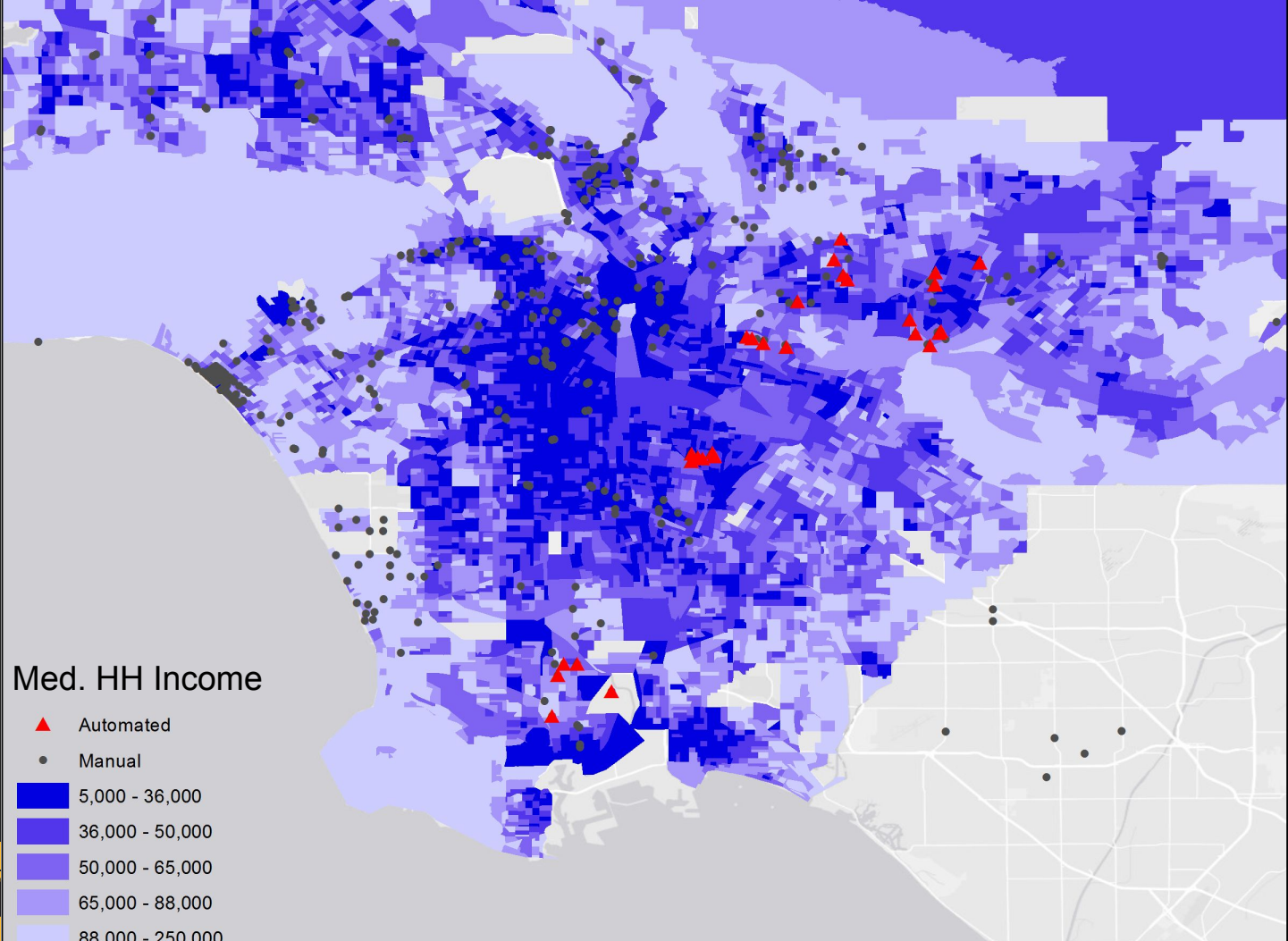
This Data

Partnership with Los Angeles County Department of Public Health

Counts took place in 2013 and 2014 at 30 locations

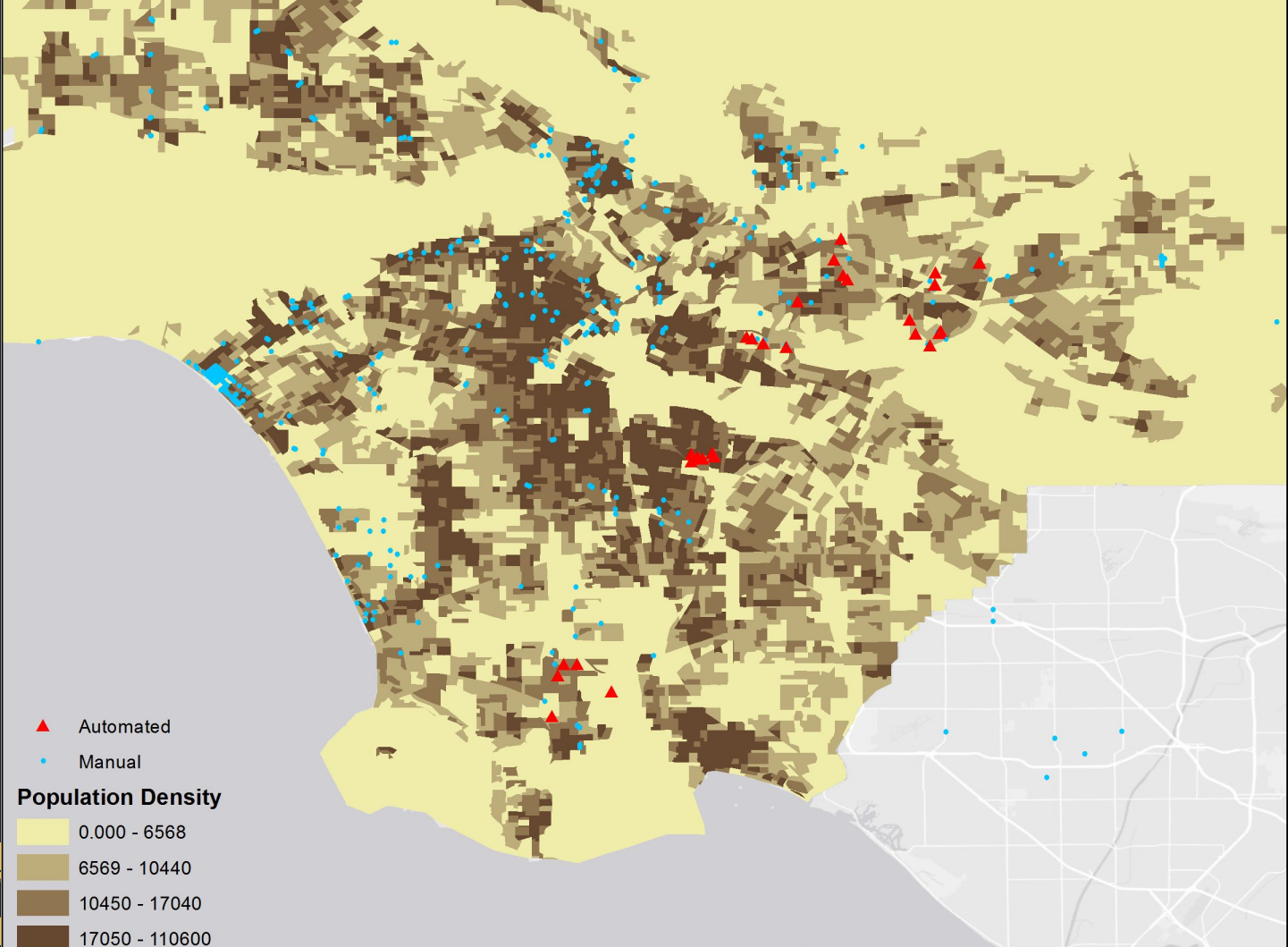
Counters installed at a given site for between 3 and 62 days (mean: 19 days)



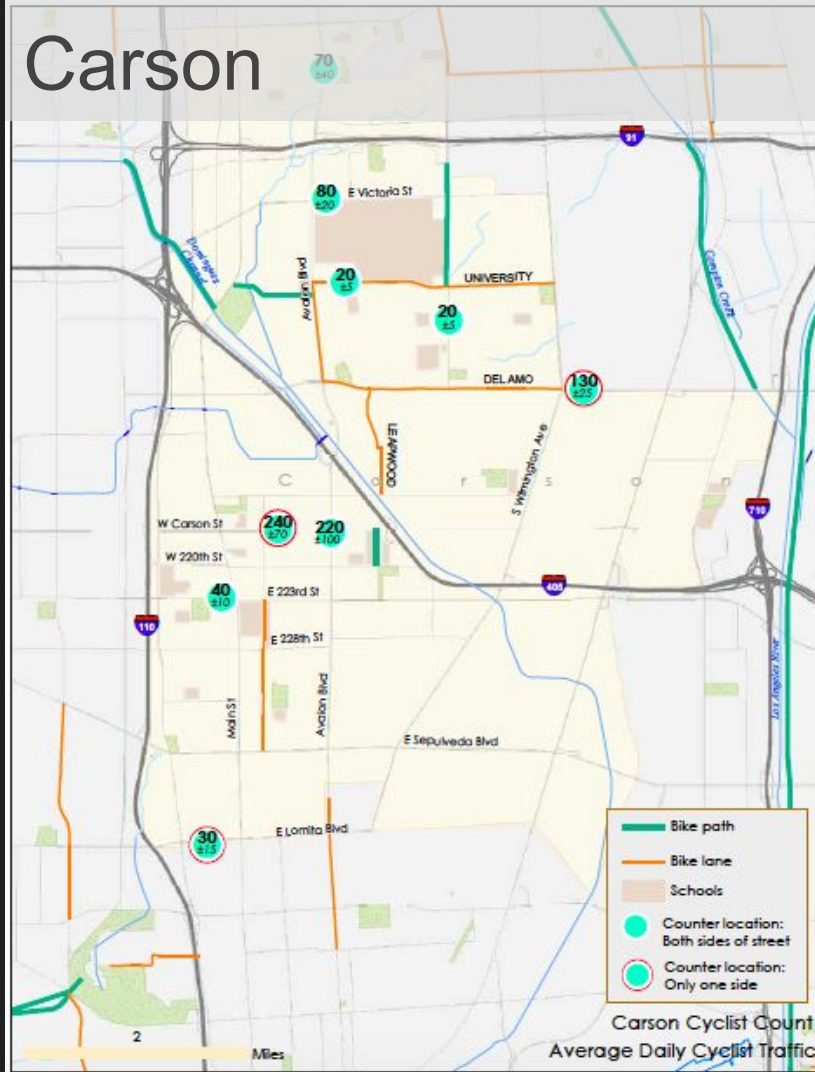


Med. HH Income

- ▲ Automated
- Manual
- 5,000 - 36,000
- 36,000 - 50,000
- 50,000 - 65,000
- 65,000 - 88,000
- 88,000 - 250,000



Carson



Lewis
Center



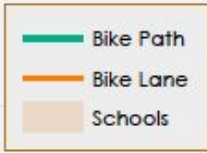
San Gabriel Valley



Cudahy



Cudahy



Cudahy



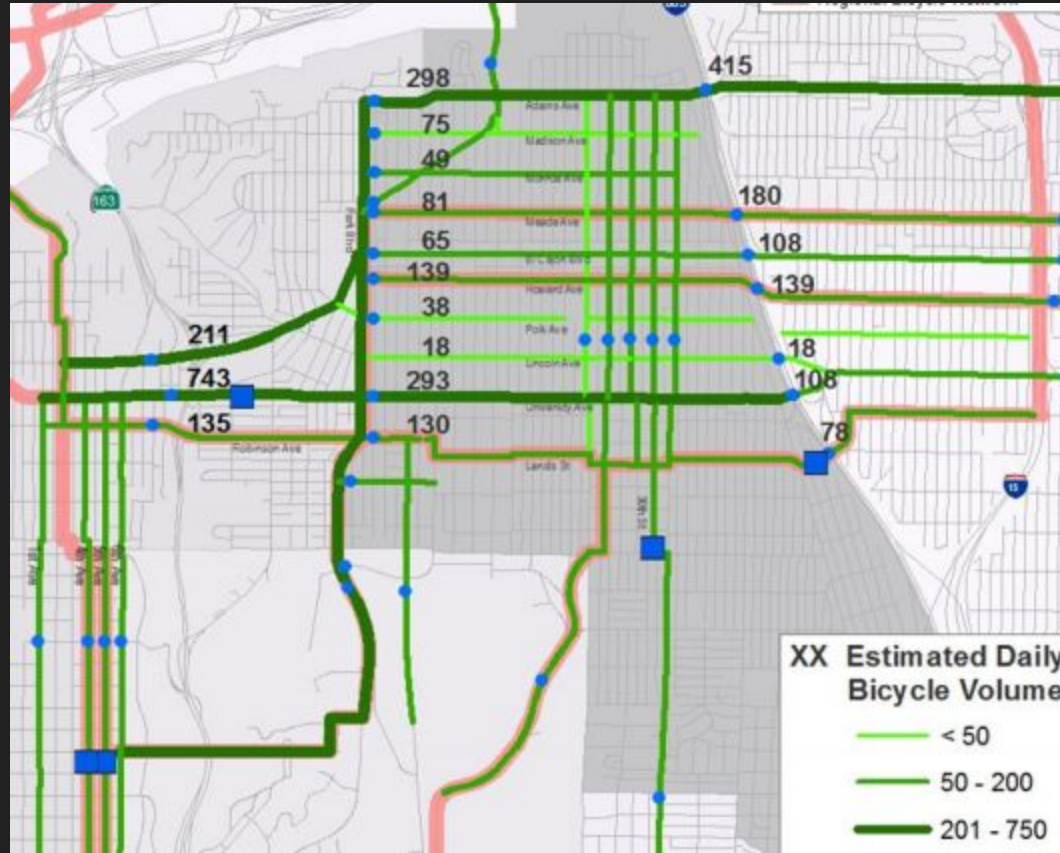
Quick Comparison

Minneapolis Mean pedestrian traffic (51/h); mean bicycle traffic (38/h)

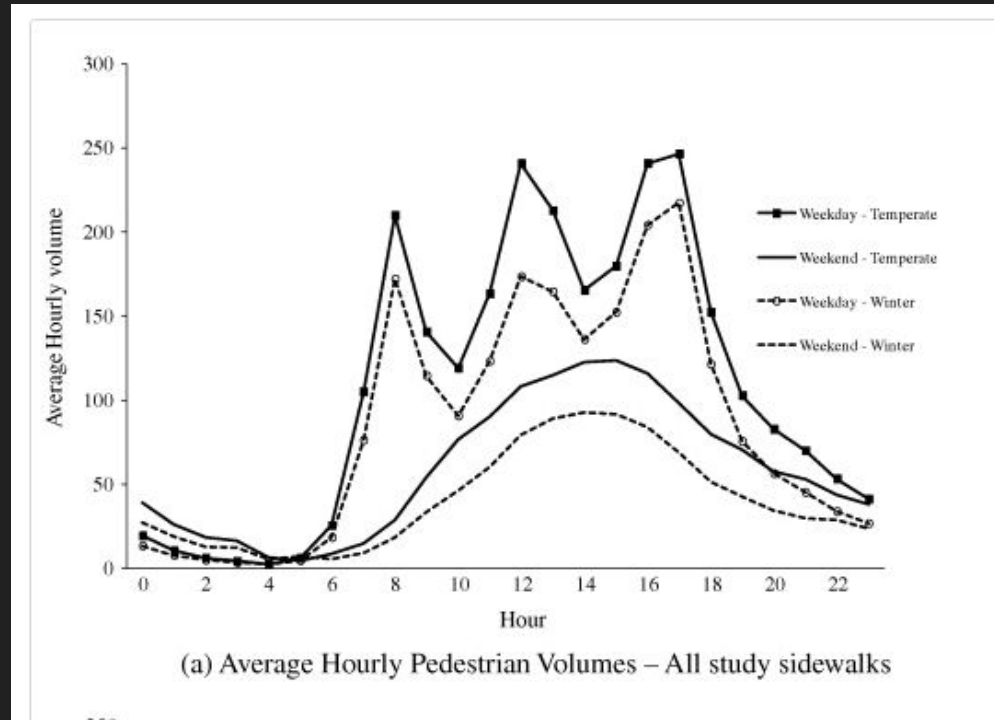
- Hankey et al 2012

Montreal max hourly pedestrian volume ~767/h

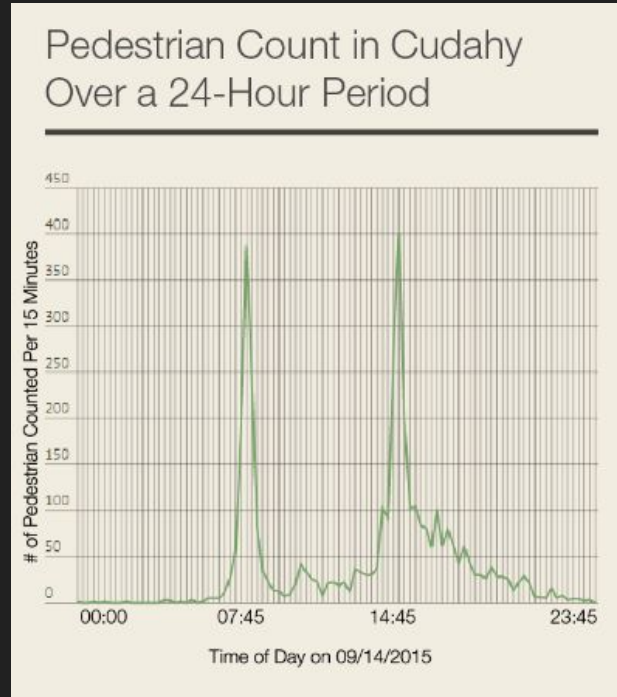
Quick Comparison



Montreal, cont. (Miranda-Moreno and Lahti 2013)



Findings - School Travel



Findings - University Travel



Findings - Bike Networks



Lessons Learned in the QA/QC Process

Some Next Steps

**Lewis
Center**



Thank You!

View and download the (bike) data at bikecounts.luskin.ucla.edu

Read the reports at

- [Carson](#)
- [Cudahy](#)
- [San Gabriel Valley](#)

Contact me at herbiehuff@luskin.ucla.edu

**Lewis
Center**

