



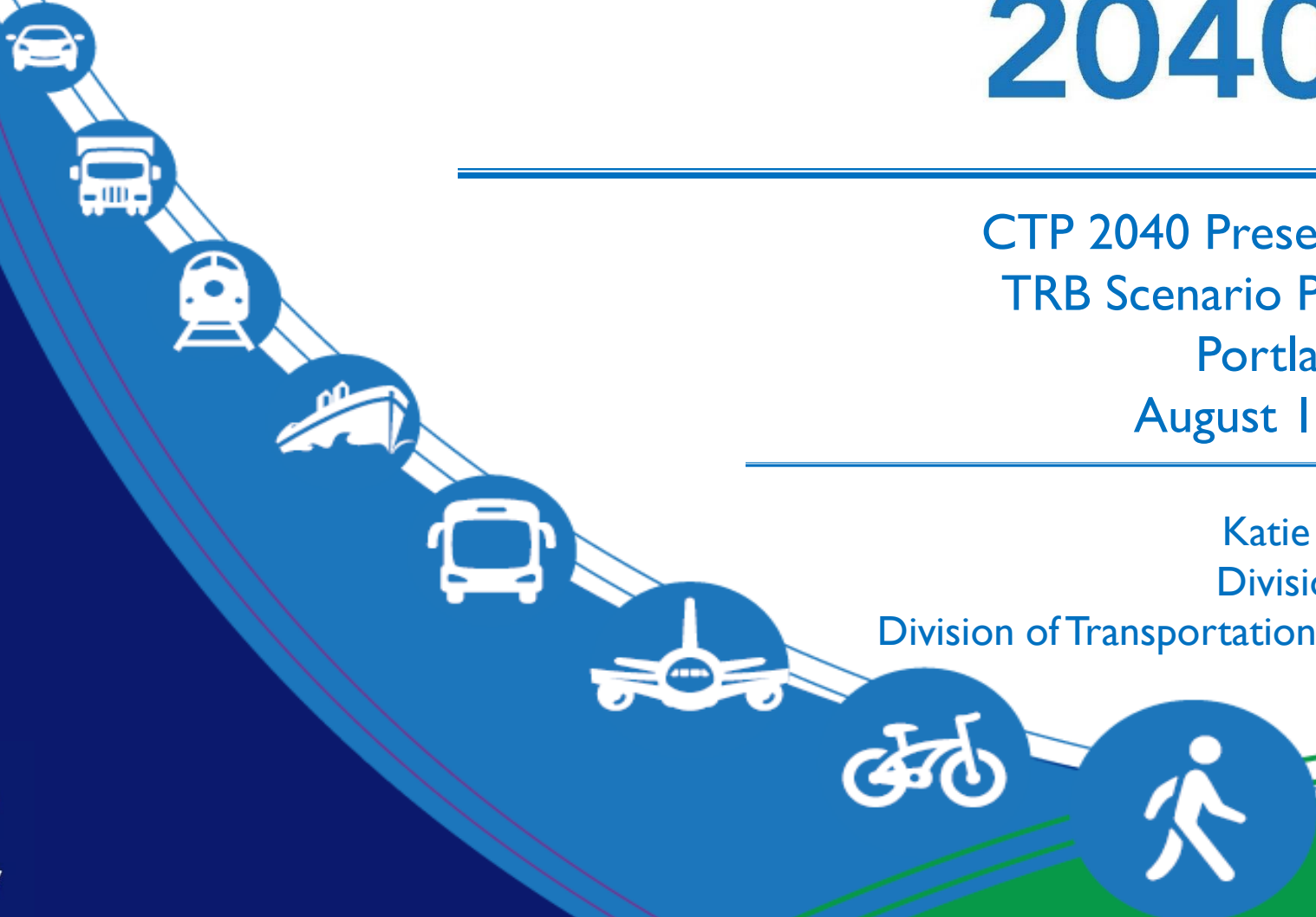
California

TRANSPORTATION PLAN

2040

CTP 2040 Presentation
TRB Scenario Planning
Portland, OR
August 16, 2016

Katie Benouar
Division Chief,
Division of Transportation Planning
Caltrans



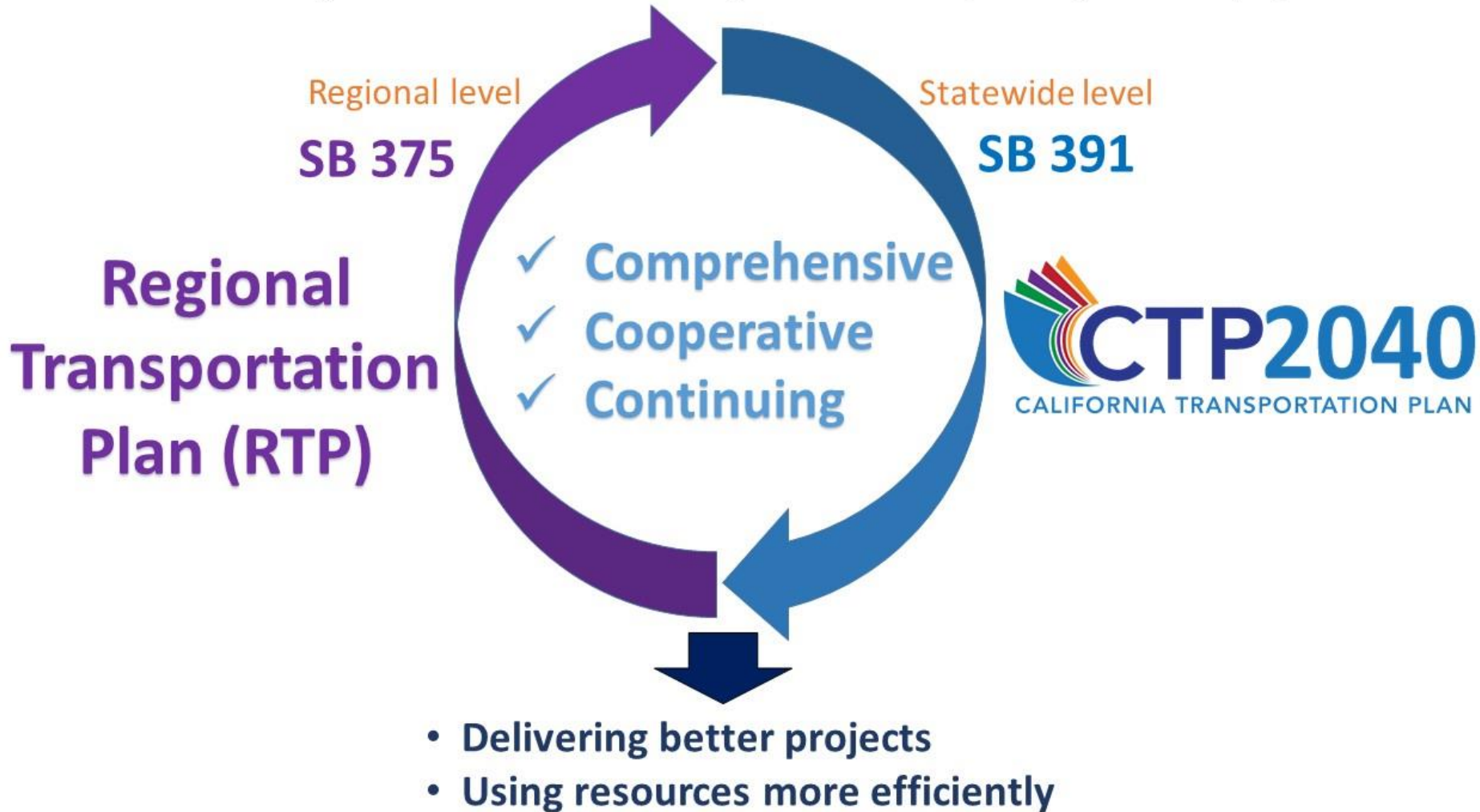
What is the CTP 2040?

A statewide, long-range transportation plan that:

- Is done every 5 years with a 25-year horizon
- Defines goals, policies, and strategies and the future statewide, multimodal transportation system
- Integrates statewide modal plans
- Builds upon Regional Transportation Plans and Sustainable Communities Strategies
- Analyzes future alternatives and policies using robust modeling tools

Legislative Requirements

Reducing Greenhouse Gases: Shared Responsibilities SB 375 (Steinberg) and SB 391 (Liu)



The Challenge

Develop and model scenarios to show how the state will achieve maximum feasible emission reductions to meet GHG reduction goals:

- 1990 levels by 2020 (AB 32)
- 80% below 1990 by 2050 (Gov. EO)

Input for Scenario Development

PAC

- MPO/RTPA planning staff and Tribes
- State Agencies
 - SB 391 specified
 - Other key State agencies
- Advocacy Groups – modal, environmental, local, etc.
- FHWA and US EPA



TAC

- MPO/RTPA technical staff
- Key State agency staff – ARB, CEC and OPR
- CT HQ's staff – modal plans
- District modelers

Scenario 1: MPO and State Modal Plans



Components:

- MPO Sustainable Communities Strategies land use and transportation plans, effective Spring 2013.
- Caltrans' Modal Plans, including
 - Aviation
 - Freight
 - Interregional Transportation
 - Rail
 - Transit
- The current mix of fuel efficiency and vehicle technology were determined by the ARB Advanced Clean Cars and In-Use Standards.

Scenario 2: Current Plans Plus Proposed Strategies



Components:

- MPO Sustainable Communities Strategies (same as Scenario 1).
- Caltrans' Modal Plans (same as Scenario 1).
- Fuel and vehicle technologies (same as Scenario 1).
- CTP 2040 package of GHG reduction transportation strategies.

GHG Reduction Strategies

Telecommute/Work at Home



High-Speed Rail



Expand Bike



Transit Service Improvements



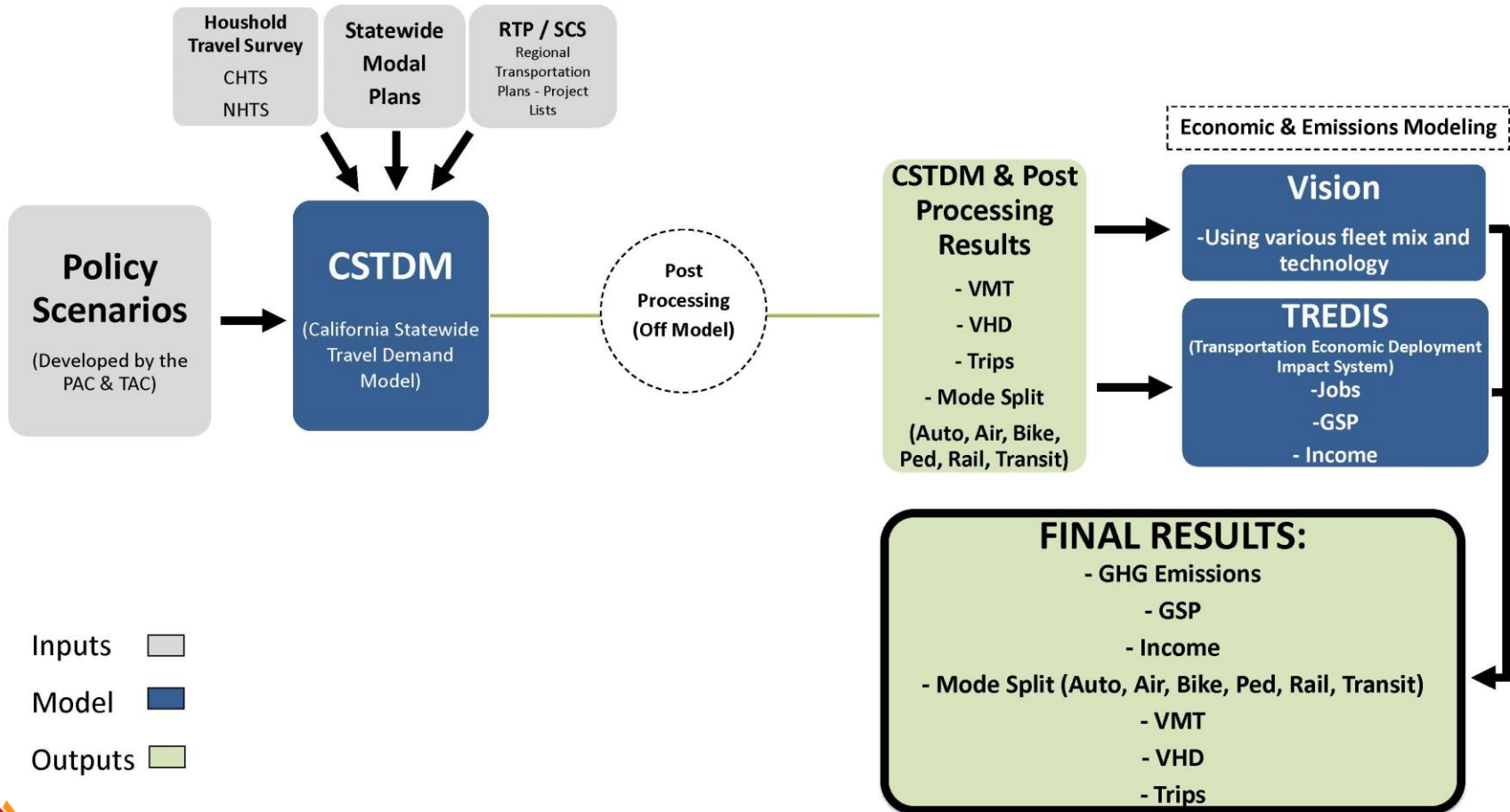
Scenario 3: Meeting the Goals



Components:

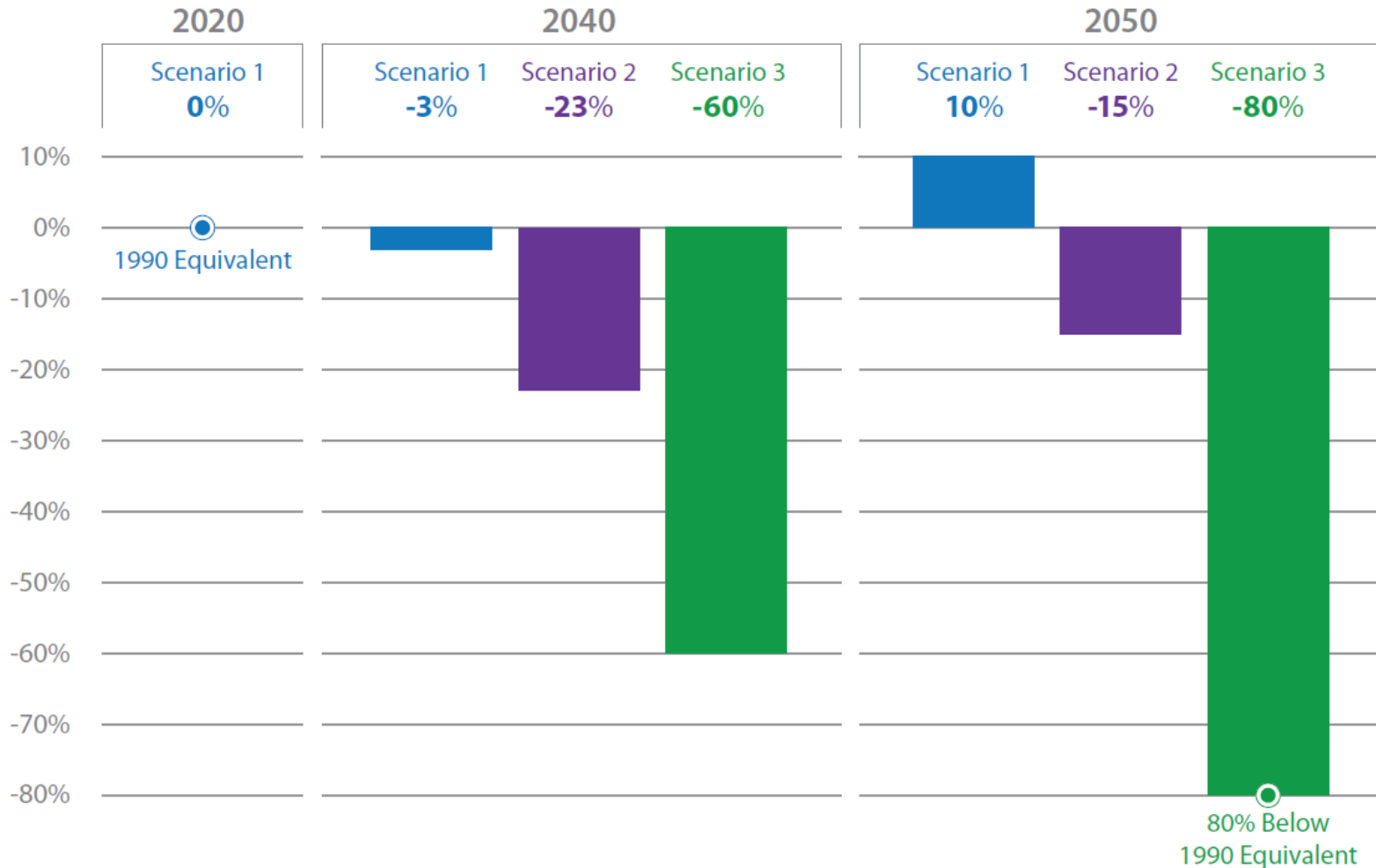
- MPO Sustainable Communities Strategies (same as Scenario 1).
- Caltrans' Modal Plans (same as Scenario 1).
- Fuel and vehicle technologies (same as Scenario 1).
- CTP 2040 package of GHG reduction transportation strategies (same as Scenario 2).
- A fleet mix of additional future fuel efficiencies and vehicle technologies, as assessed by ARBs Vision for Clean Air model, designed to meet GHG emission reduction goals for 2020 and 2050.

Modeling our Scenarios



Transportation GHG Reduction by Scenario

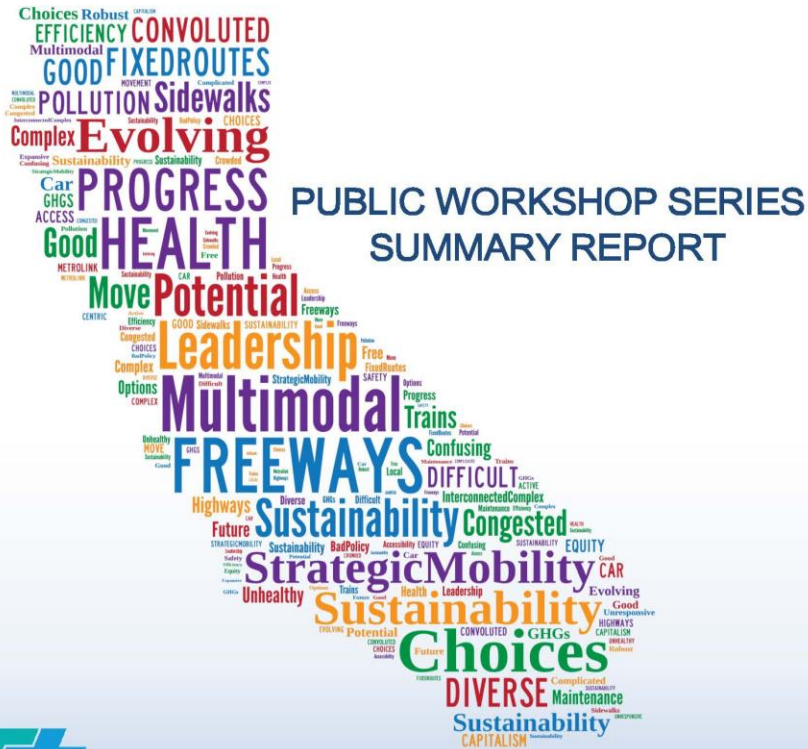
California Greenhouse Gas Emissions Change



Public Engagement



Public Engagement



CTP 2040 Website

California Transportation P... x +

www.dot.ca.gov/hq/tpp/californiatrnsportationplan2040/index.shtml

www.californiatrnsportationplan2040.org

Caltrans -> Transportation Planning -> Planning Offices -> Office of State Planning -> California Transportation Plan

TRANSPORTATION PLANNING

- > Division of Transportation Planning Home
- > Planning FAQs
- > Planning Offices
- > Jobs & More - Caltrans Planners
- > Contact Us
- > About Us

CTP LINKS

- > Home
- > Legislation
- > Plans
- > Programs
- > Outreach
- > Committees
- > Reference

CONTACT

Chris Ratekin
Acting Chief, Office of State Planning
Division of Transportation Planning
chriss.ratekin@dot.ca.gov

www.dot.ca.gov/hq/MassTrans/statewide-transit.html

California TRANSPORTATION PLAN 2040

Integrating California's Transportation Future

Welcome

Welcome to the California Transportation Plan (CTP) 2040 website. The creation of this website is to provide information and gather public input about the CTP 2040. We invite visitors to explore the website and provide comments and recommendations through the "Connect With Us" section.

What is the CTP 2040?

The California Transportation Plan (CTP) provides a long-range policy framework to meet our future mobility needs and reduce greenhouse gas emissions. The CTP defines goals, performance-based policies, and strategies to achieve our collective vision for California's future statewide, integrated, multimodal transportation system. The plan envisions a sustainable system that improves mobility and enhances our quality of life. To learn more about the development of the CTP, please browse through the [CTP 2040 Fact Sheet](#).

What's New?

- > [CTP 2040 Brochure](#)
- > [CTP 2040 Scope Document & Timeline](#)
- > [2040 Focus Group Summary Report](#)

CONNECT WITH US

- Send Us an Email
- Join Our Mailing List
- Share via Twitter
- FAQs
- Mini Poll

CTP 2040 Events

Today February

Sun	Mon	Tue	Wed	Thu	Fri	Sat
Feb 1	2	3	4	5	6	7
8	9	10	11	12	13	14
15	16	17	18	19	20	21
22	23	24	25	26	27	28

Events shown in time zone: Pacific Time [Google Calendar](#)

Caltrans HQ-California

EXPAND THE ROLE OF

6:30 PM 2/2/2015

Feedback to incorporate next time

- More and earlier local engagement in scenario development
- Analysis and forecasting of land use changes in modeling
- More in-depth technical analysis of economic impacts
- Model health impacts of each scenario
- Balance adding capacity with the multimodal system and VMT reduction
- Model emerging and future trends
- Integrate California Freight Model into CSTDM

What's next

- CTP 2040 rollout implementation and modal plan updates
- California Statewide Travel Demand Model and Freight Model updates
- National Household Travel Survey
- Learning how to model VMT
- Scenario Planning Team formed
- Futurist white paper from university

For More Information...



Check out the CTP 2040 Website at:
www.californiatransportationplan2040.org