

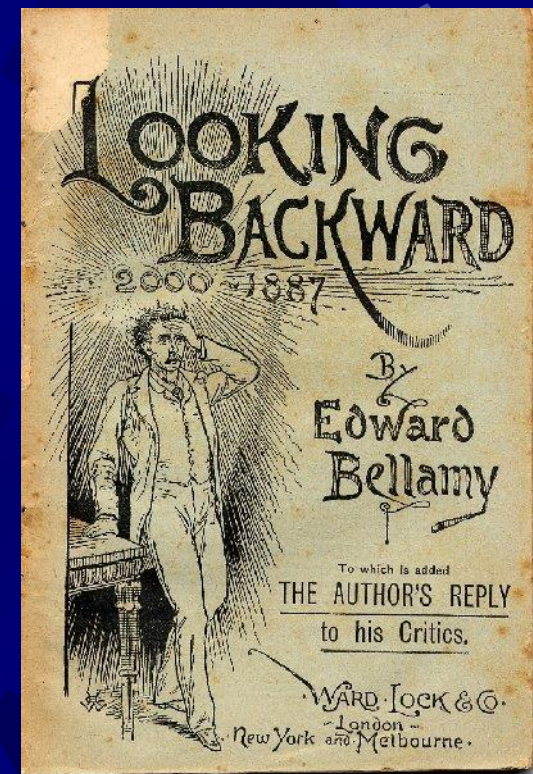
# Looking Backwards and Forwards: Perspectives from an MPO Planner

Chuck Purvis

Metropolitan Transportation  
Commission (Retired)

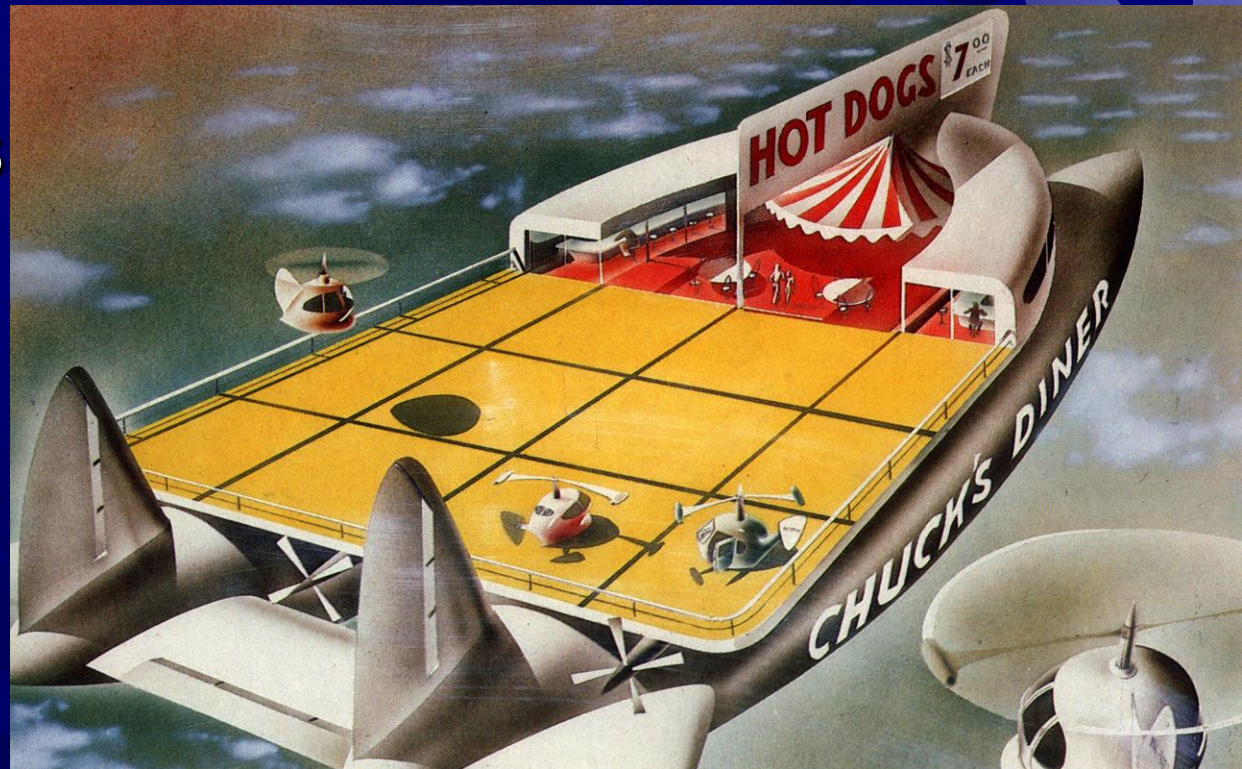
San Francisco, California

November 14, 2017



# A Metropolitan View: Looking Back from the Future (2012 – 2002)

Chuck Purvis  
MTC  
Oakland, CA



# Looking Back at the ACS 2012 – 2002

- ★ ACS “History”:  
WHAT WENT RIGHT!
- ★ ACS “Alternate History”:  
WHAT WENT WRONG?
- ★ **Processes** for Local Metro Involvement
- ★ **Products** from ACS (2004-2012)

# January 2012 – What's Right

- ★ Annual data, released every summer since 2003 data released in 2004
  - Vehicle availability, income, poverty
  - Means of transportation to work
  - County-to-county commute patterns
- ★ Five-year data at tract, zone levels first released in late 2008 (2003-2007)
- ★ Most recent 5-year data released late 2011 (2006-2010)
- ★ ACS Questionnaire changed in 2008
- ★ User-Defined Geographies and Tabs

# January 2012 – What's Wrong

- ✱ Congressional pressure to reduce cost and length of ACS
- ✱ Inexplicable year-to-year changes in socio-economic characteristics
- ✱ Uncertainty and unease in use of five-year very small area data
- ✱ Reduced emphasis on workplace geocoding; increased emphasis on residence accuracy
- ✱ Major shifts due to adjusting ACS data to 2010 “short form”

# San Francisco Commuters

	<b>1990 Census</b>	<b>1999 ACS</b>	<b>2000 ACS</b>
<b>Drive Alone</b>	147,200	153,500	172,400
<b>Carpool</b>	43,900	38,700	39,000
<b>Transit</b>	<b>128,200</b>	<b>119,800</b>	<b>134,900</b>
<b>Walk</b>	37,600	35,300	36,800
<b>At Home</b>	14,500	16,000	20,200
<b>TOTAL</b>	<b>382,300</b>	<b>374,700</b>	<b>419,600</b>

# San Francisco Demographics

	1990 Census	1999 ACS	2000 ACS	2000 Census
Total Pop.	724,000	746,800	<b>757,000</b>	<b>776,700</b>
Owner HHlds.	105,500	123,500	116,700	115,400
Renter HHlds.	200,100	192,500	<b>208,900</b>	<b>214,300</b>
House- holds	305,600	316,000	325,600	329,700

# Local Involvement Processes

- ★ ACS Questionnaire Updates
- ★ Geographic Areas (TAZ, PUMAs, Tracts, Place Boundaries)
- ★ TIGER
- ★ Master Address File
- ★ Workplaces Address File
- ★ WORK-UP for ACS?



# TIGER/MAF Accuracy Improvement Project

- ★ MAF: Residential AND Workplace Locations
- ★ Improve coordinate accuracy with GPS
- ★ “Expand and Encourage Geographic Partnership Options”
- ★ “Automatic change detection” and “user update” systems
- ★ New & Improved LUCA Program (Local Update of Census Addresses)

# ACS Products, 2004-2012

## ★ Annual Products

- Standard Tabulations (65,000+ pop. Threshold)
- PUMS (1% super-PUMAs)
- Annual Journey-to-Work (CTPP-like)

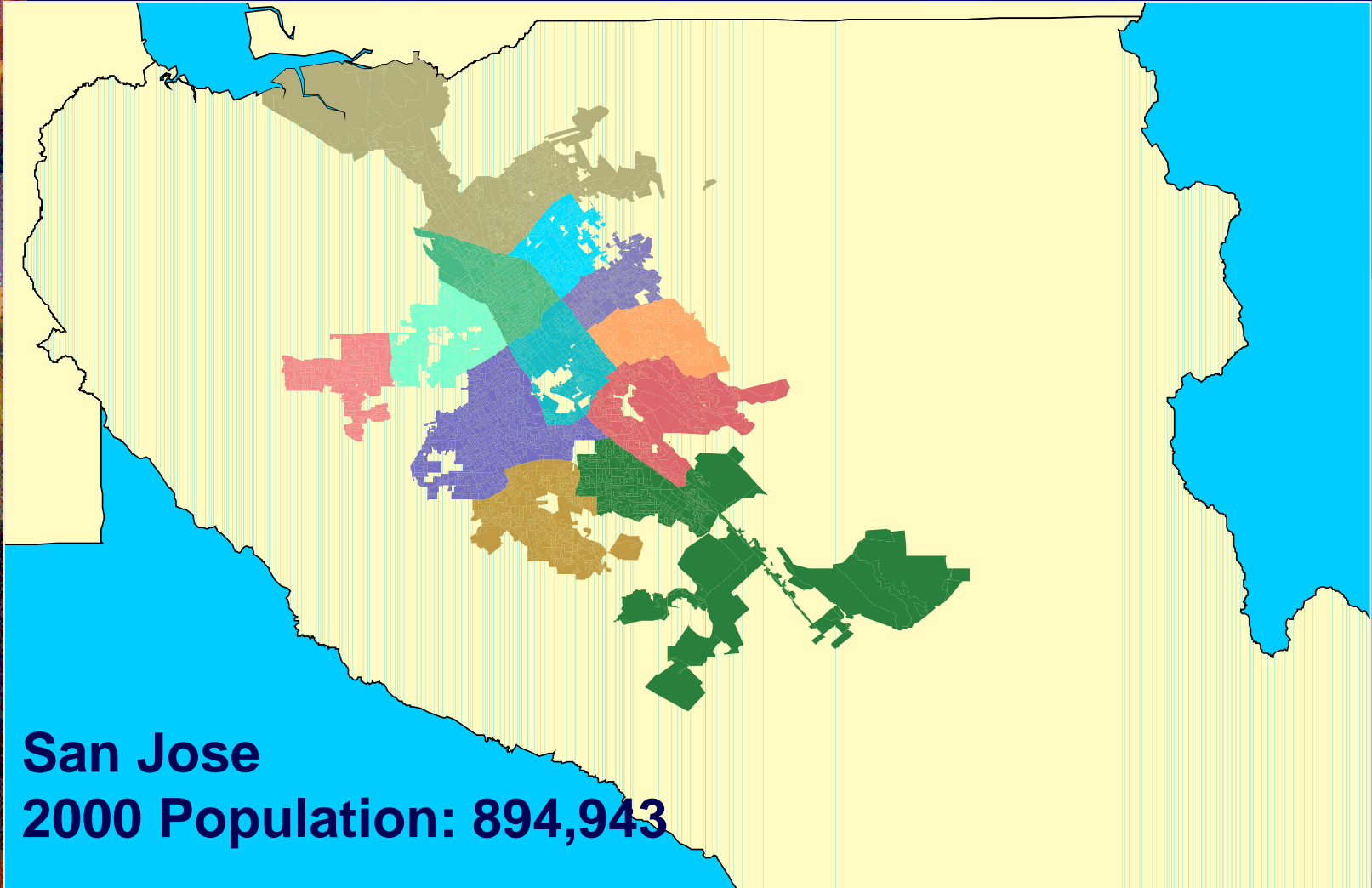
## ★ 3-Year Data Products (Custom Tabulations, 20,000+ pop. Threshold)

## ★ 5-Year Data Products

- Standard Tabulations at Very Small Area
- PUMS (5% regular PUMAs)
- Journey-to-Work (CTPP)

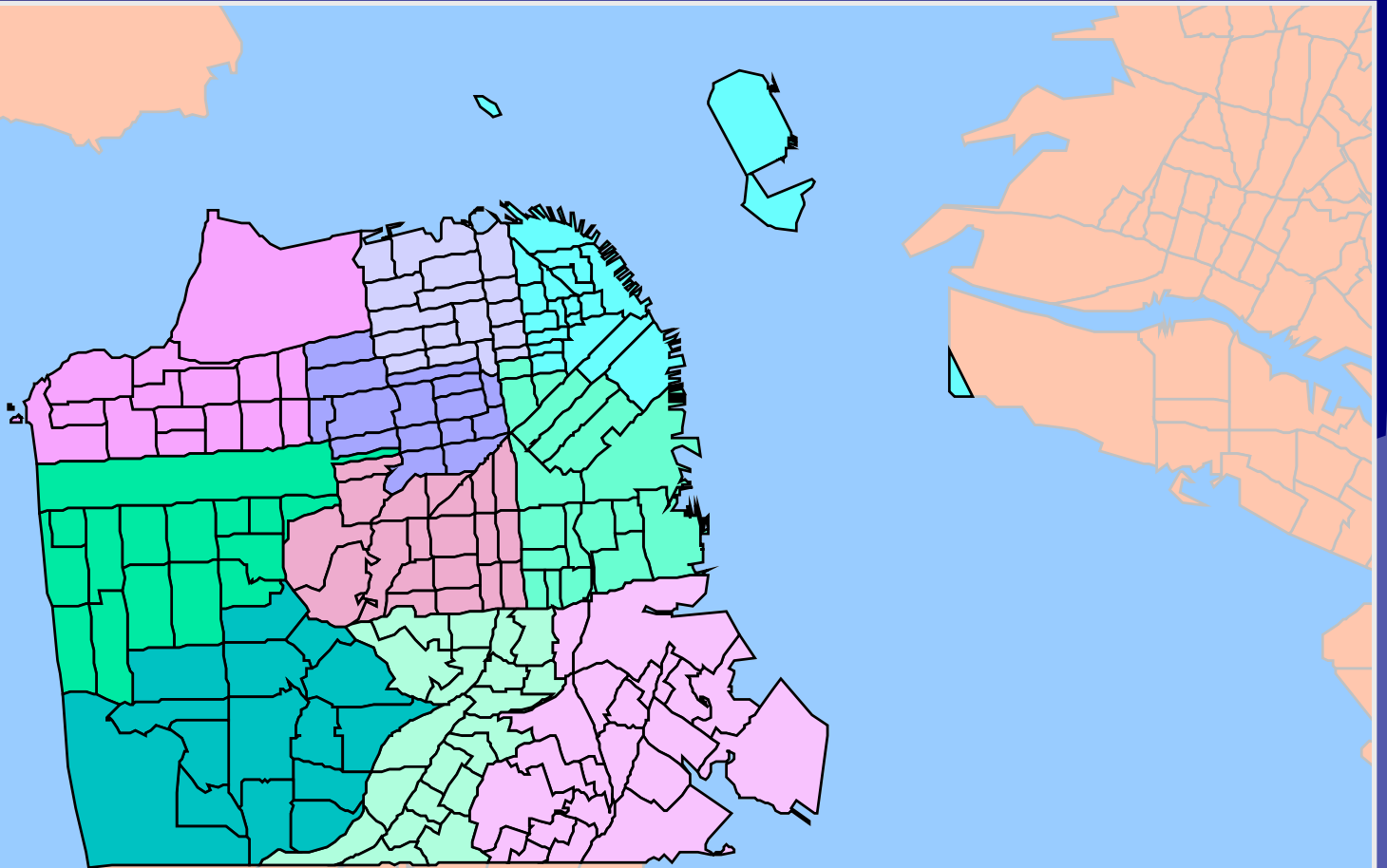
# Splitting San Jose

## 12 ACS Districts of 65,000+ population



# Splitting San Francisco

## 10 ACS Districts of 65,000+ population



**San Francisco**  
**2000 Population: 776,733**

# ACS Opportunities

- ★ ACS = demographic foundation for “Annual Metropolitan Transportation Performance Report”
- ★ Annual update of key statistics
  - ★ Auto availability; Income; Poverty
  - ★ Means of Transportation to Work
  - ★ Labor Force; Workers by Place-of-Work
  - ★ County-to-County & Place-to-Place Commuters

# ACS Challenges

- ★ ACS Questionnaire isn't updated frequently to meet data needs. Need non-federal input.
- ★ Inexplicable Year-to-Year Changes.
- ★ Weighting/expansion of ACS to Decennial Census "short form" is problematic.
- ★ Customer difficulty in interpreting and using small sample surveys with relatively high standard errors.
- ★ Possible reluctance of the Census Bureau's Disclosure Review Board (DRB) to provide useful tables at useful levels of geographies.

# MPO “To Do” List

- ★ ACS is Continuous Work. Need full-time staff as part of “Regional Data Center” (“State Data Center”) program.
- ★ Partnerships for MAF/TIGER; Q-UP; WORK-UP; TAZ-UP; PUMA-UP; LUCA
- ★ Push for Annual PUMS, CTPP as standard ACS Products
- ★ Push for User-Defined Areas of 65K+ Pop for Annual, standard ACS Products
- ★ Push for 5-year products – CTPP



★ <http://www.trbcensus.com/>





★ <https://censusmaven.wordpress.com/>