



SEPTA's Asset Management Program

Laura J. Zale
September 26, 2017

SEPTA

Philadelphia, PA



- Sixth largest public transportation agency in the country.
- Multimodal:
 - Heavy Rail
 - Commuter Rail
 - Light Rail
 - Bus
 - Trackless Trolley
 - Paratransit
- Utilizing infrastructure maintained and owned by Amtrak, freight, and the City

A Legacy Transit System



- Created by the consolidation of bankrupt transit providers between 1964 and 1983.
- Documentation on assets was lacking.



A Balance of Preventative Maintenance...



... and Rebuilding the System



Expansive and Multimodal



A Diverse Asset Portfolio



With Diverse Inspection and Maintenance Requirements



- 4,000 Vehicles
- 345 Stations and Bus Terminals
- 23 Vehicle Maintenance Shops
- 400 miles of mainline track
- 364 bridges
- 77 Substations/ Switching Stations

A Data Rich Environment



Turning Data into Information



Gives the Assets a Voice in the Capital Planning Process

Asset Management Program



Implementation Strategy

- Develop Program Framework
- Identification of Existing Practices and Gap Analysis
- Procurement and Deployment of Software Tools
- Capital Needs Inventory and Assessment
- Asset Management Plan Development



Process Assessment: Strengths

- Maintenance practices well defined.
- KPIs and reporting metrics.
- Lifecycle management in planning.



Process Assessment: Gaps

- Level of practice and granularity varied among asset managers.
- Identified data collected by other business units.

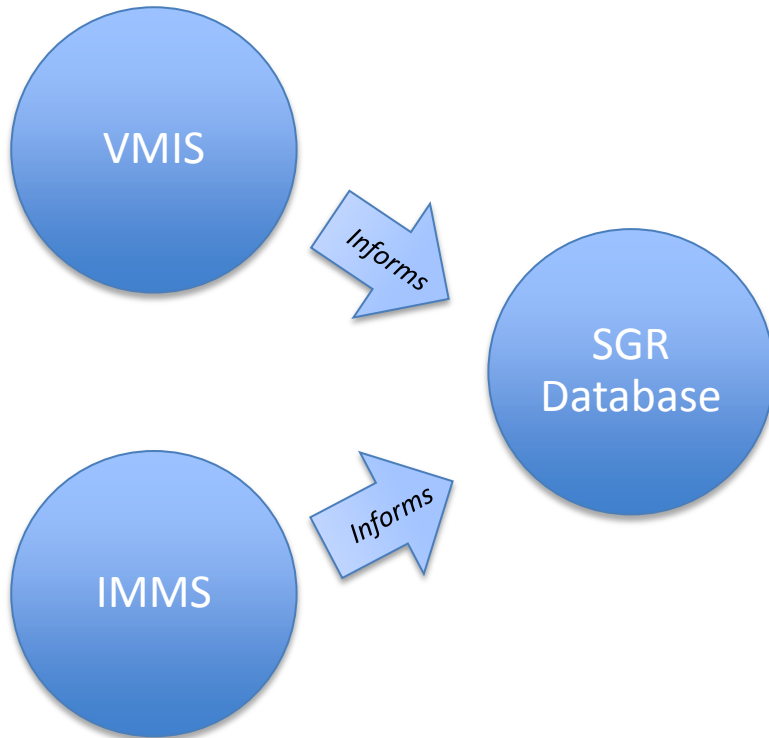


Criteria for Selecting Tools

- Regulatory compliance.
- Ability to incorporate data collection into existing business processes as much as possible.
- Successful implementation at other transit agencies of similar size and complexity.
- Flexibility to be used across the business units that maintain assets.
- Build upon successes in legacy fleet management system.



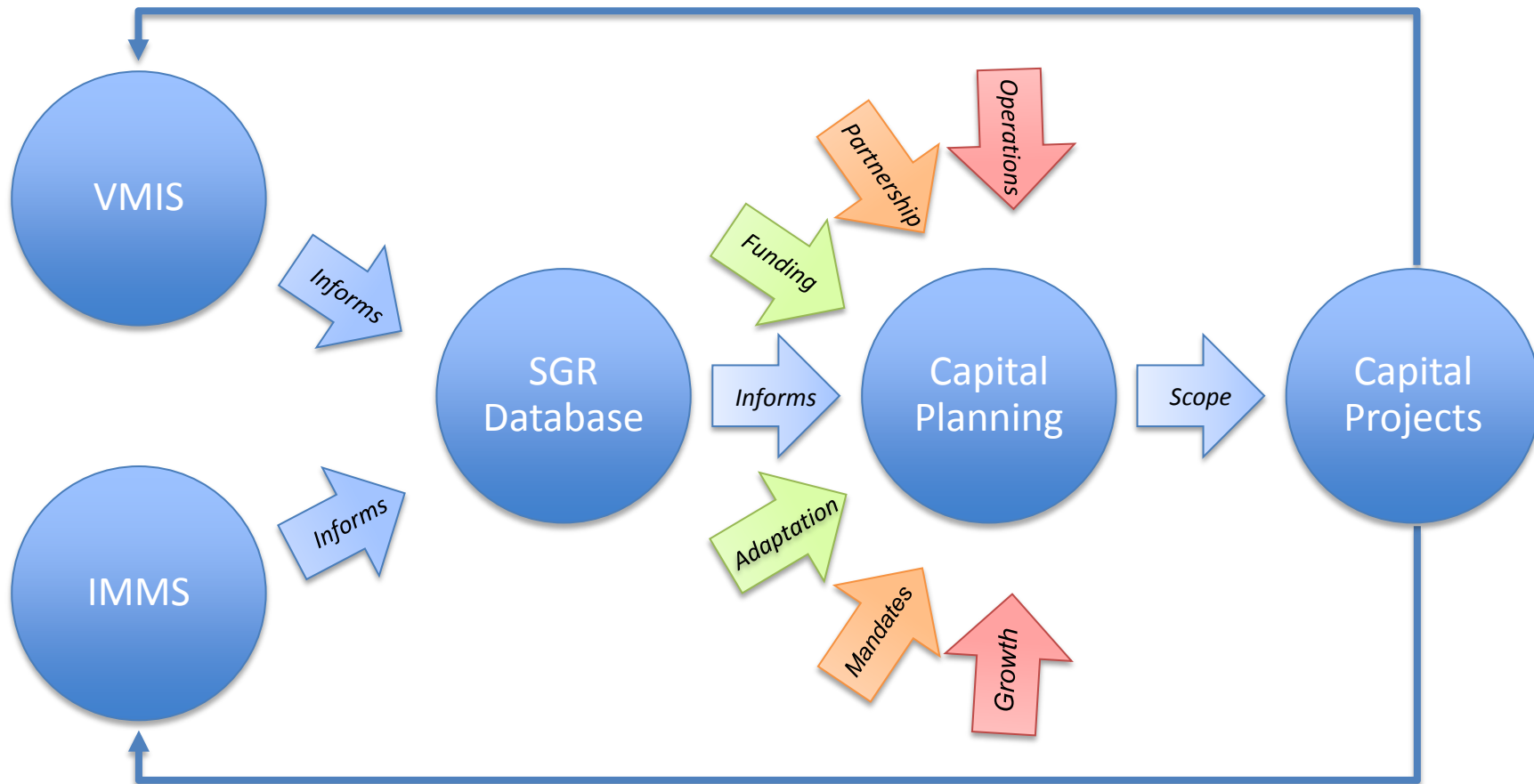
Data-Supported Decision Framework



Asset Maintenance
Data

Capital Asset
Data

Data-Supported Decision Framework



Asset Maintenance
Data

Capital Asset
Data

Project Development
and Planning

Program
Deliverables

Tactical Asset Management

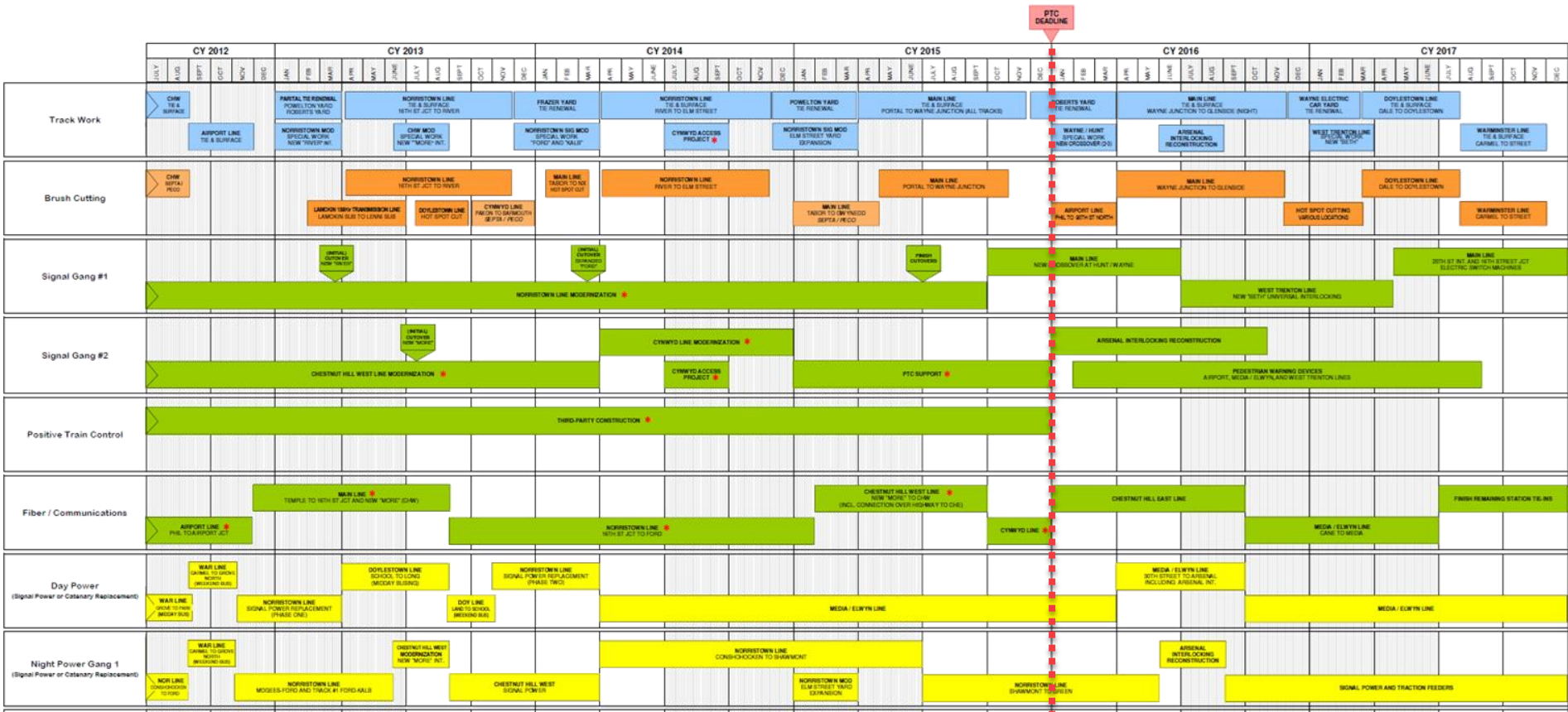
Basis in Data but Requires Balance



Lifecycle Data Drives Planning

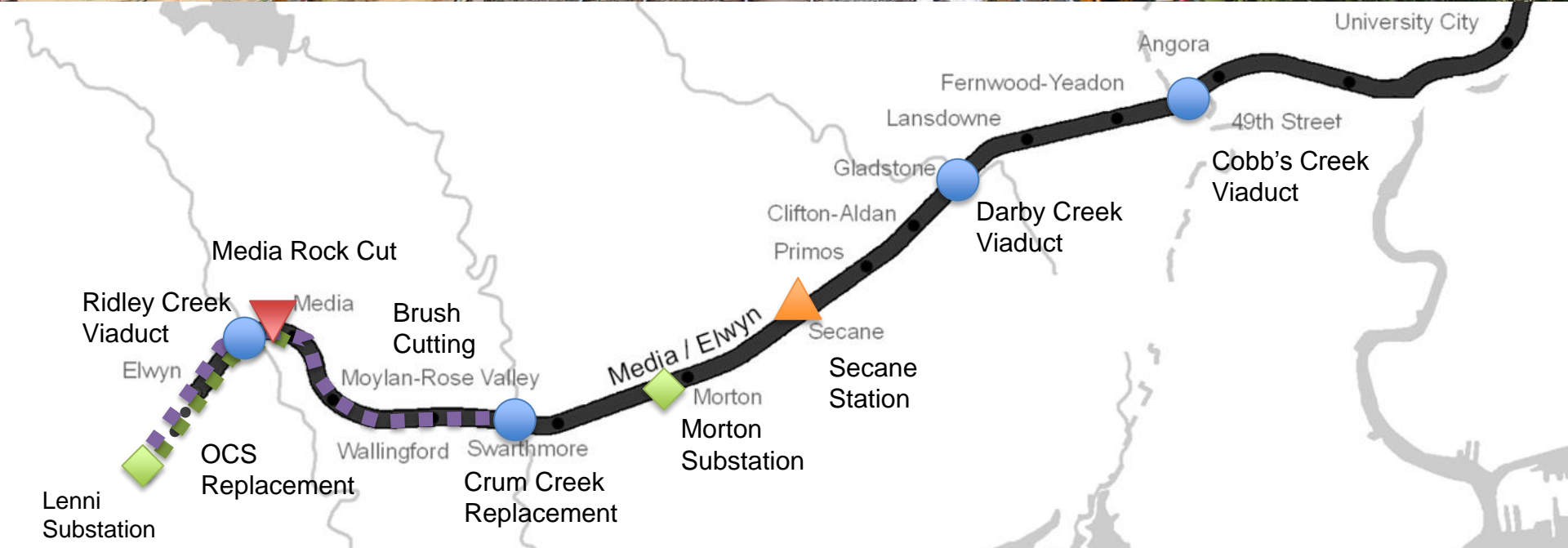
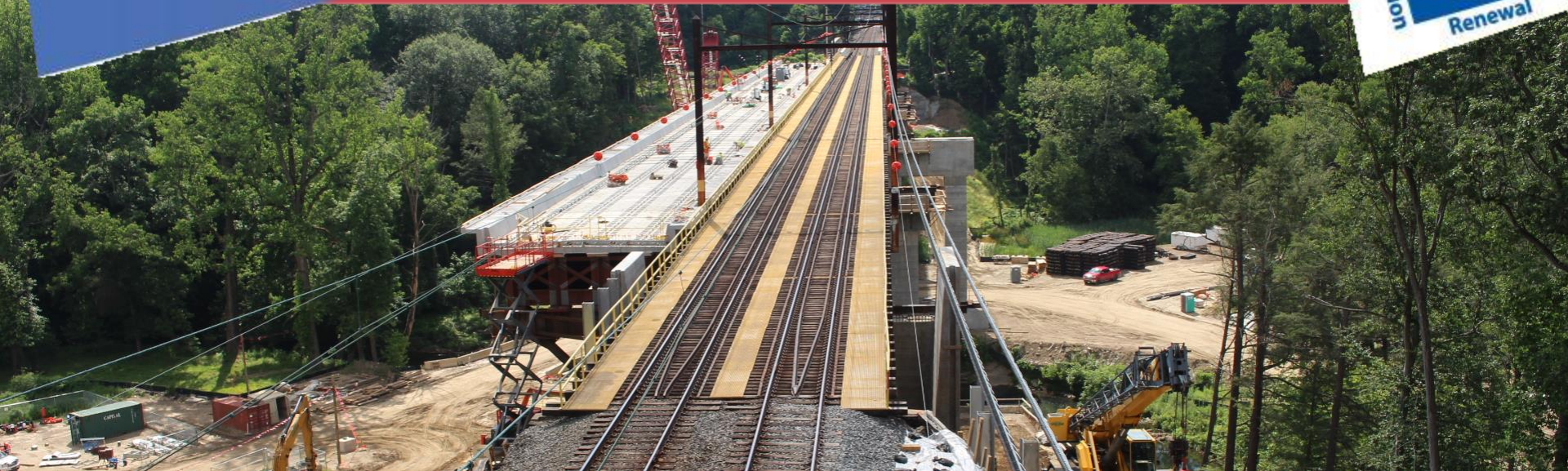


Five Year Work Plan for the Regional Railroad



On the Commuter Railroad, drivers include Positive Train Control, Plant Rationalization, and Normal Replacement.

Media/ Elwyn Line



Plant Rationalization and Modernization



Fix and Fortify



Moving Forward



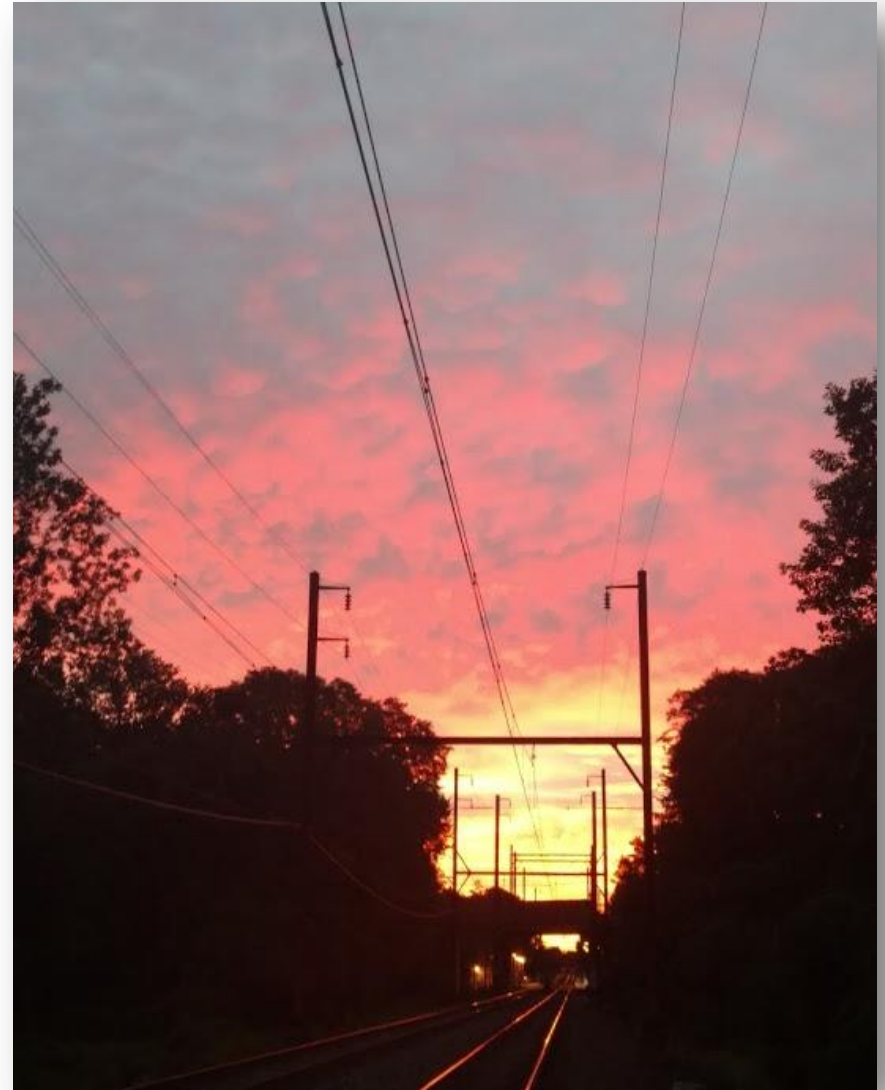
- Map inventory to support new NTD reporting requirements
- Asset Management Plan Completion
- Develop of PMP to gather asset data for ongoing projects



A Journey, Not a Destination



- SEPTA is well positioned to address the FTA's Transit Asset Management requirements.
- The new framework will allow SEPTA to improve their decision making process.





SEPTA's Asset Management Program

Laura J. Zale
September 26, 2017