

# MassDOT Resources to Address Equity

Liz Williams, PhD

Director of Data and Policy, MassDOT Office of Transportation Planning

Transportation Research Board (TRB) Executive Session @ Woods Hole  
July 2021



# Project: Baseline Indicators Catalog

Indicator Name			
Access to essential places	Total number of fatalities and injuries among people biking in particular contexts based on data availability (e.g. involving a truck, near schools, etc.)	Vehicle headway	
Access to healthcare	Number of identified priority pedestrian projects completed per year	Vehicle load	
Access to higher education	Percentage of Massachusetts residents' short trips that are made by walking	CO/VOC/NOx emissions	
Access to jobs	Percentage of MassDOT pedestrian facilities that are covered by regular snow and ice operations	Equity populations served by MPO projects in the TIP	
Access to open space	Percentage of measures in the Pedestrian Plan for which high-quality data exists and are used for evaluation	Equity populations served by MPO projects in the TIP, by investment program	
Average travel time	Percentage of pedestrian facilities that meet or exceed maintenance standards	Funding for equity populations	
Carbon monoxide emissions	Percentage of residents living within a half mile of MassDOT roads who have the option to use pedestrian facilities on those roads	Capital Project Scoring	
Congested VMT	Percentage of residents who have the option to use pedestrian facilities to travel for all short trips from their home	Competitive Regional Access (SDP)	
Geographic Distribution of Transportation Investments	Percentage of short trips beginning or ending at a transit station that could be made using pedestrian facilities	Competitive Trip Coverage (SDP)	

# Project: Baseline Indicators Catalog

## Where Collected Metrics Are Used

Boston Region MPO Long-Range Transportation Plan	Pre-PRC/PRC/Evaluation of Capital Projects
MPO Transportation Improvement Program	DBE Reporting
MPO Unified Planning Work Program	EEO/AA Reporting
Title VI Service Equity Analysis (proposed)	MBTA Triennial Title VI Program
TCI	Title VI Fare Equity Analysis
Massachusetts Bicycle Transportation Plan	Title VI Service Equity Analysis
Massachusetts Pedestrian Transportation Plan	Service Delivery Policy
MassDOT Tracker	Forging Ahead service cuts/restoration
CIP	Service Planning
MassDOT IMPACT	MBTA CIP

# Equity Issue: Access to destinations



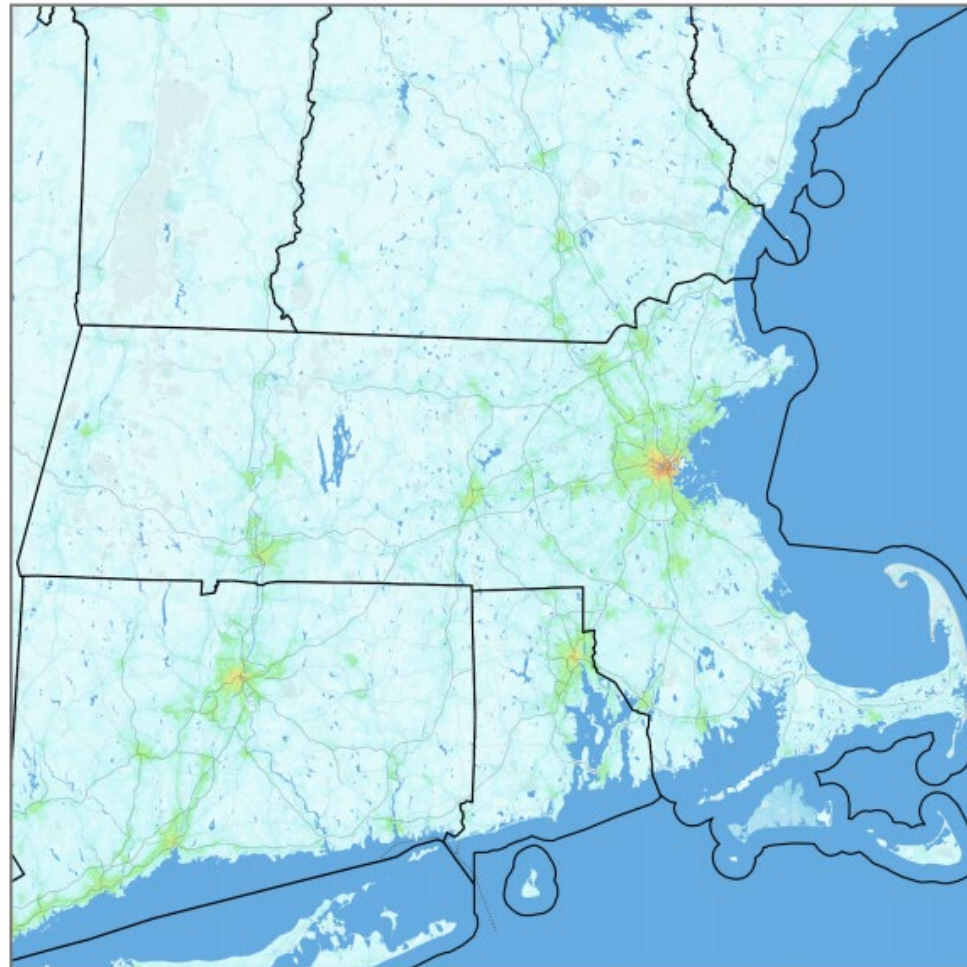
# Resource:



# Resource:



## Massachusetts



Jobs within 30 minutes  
(Transit, AM peak)





# Resource:

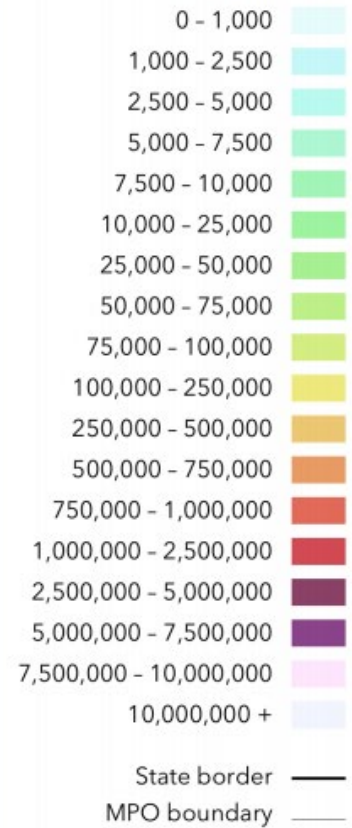


## Cape Cod MPO



### Jobs within 30 minutes

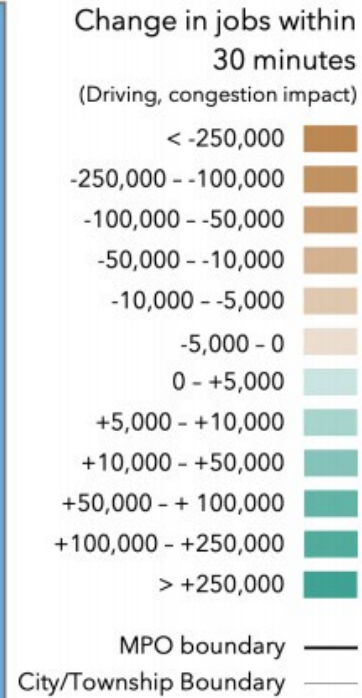
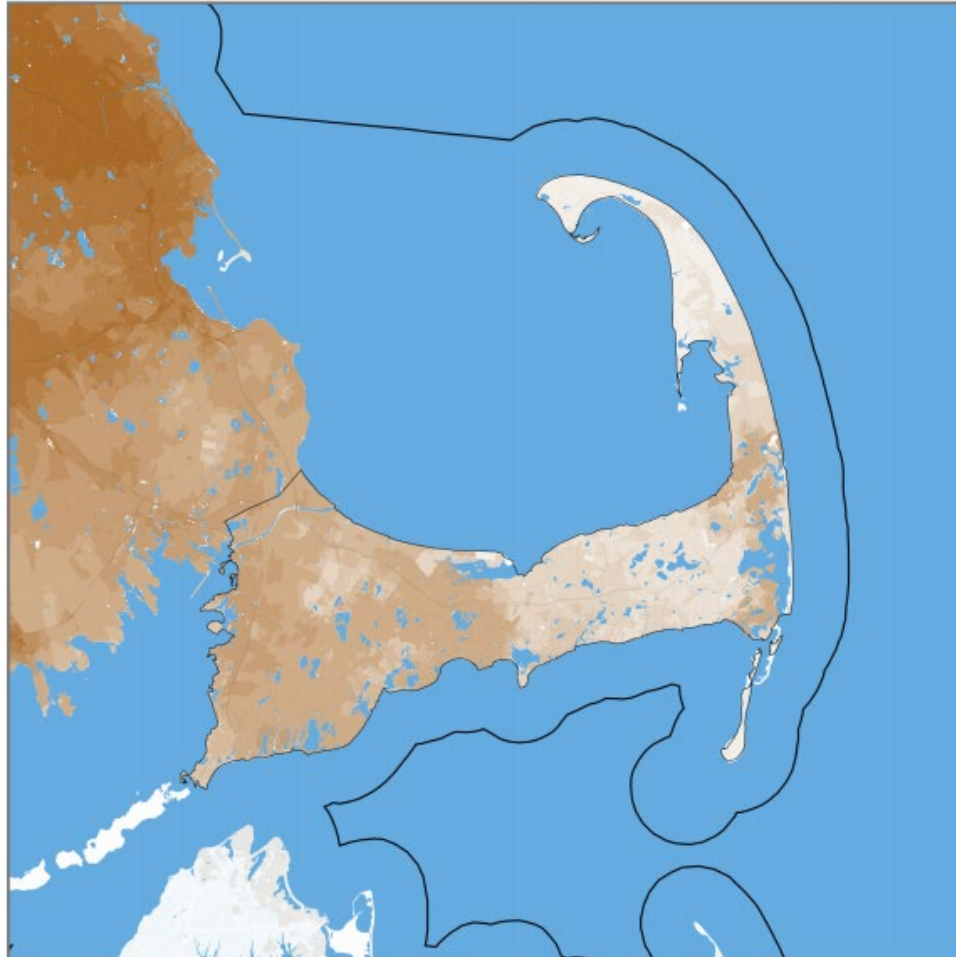
(Transit, AM peak)



# Resource:

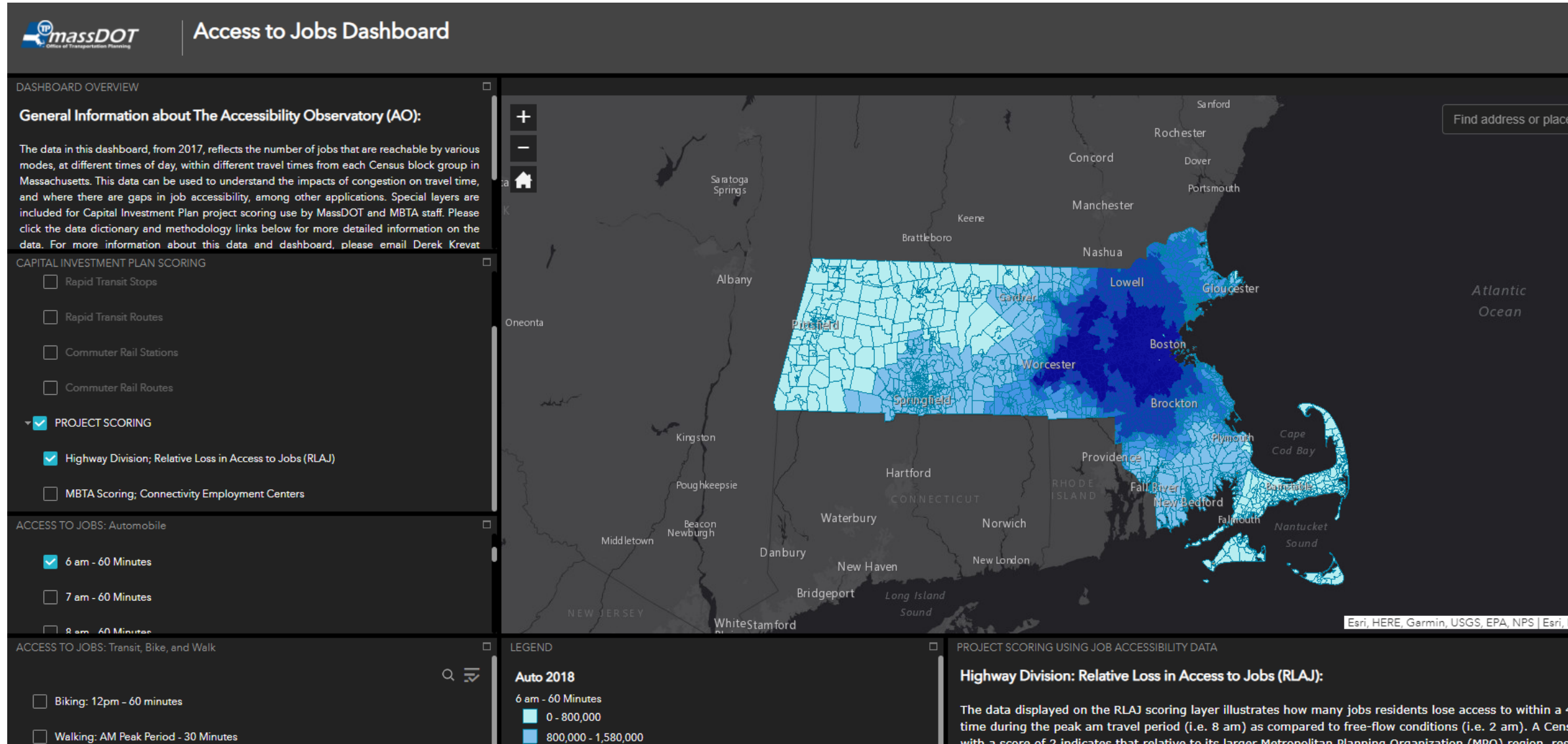


## Cape Cod MPO





# Resource:



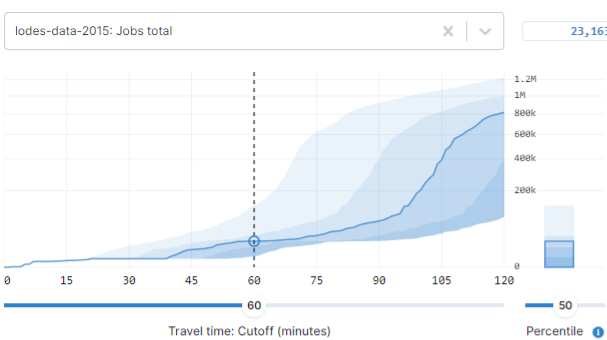
Resource:



# Resource: conveyal

Analysis complete for single origin Fetch results ↻

lodes-data-2015: Jobs total X 23,163



Travel time: Cutoff (minutes) 50 Percentile ⓘ

**liz2**  
Baseline 📍 🚗 🚝 🚆 2021-06-17 7:00-9:00 Regional analysis +

Project: liz2 Scenario: Baseline Active preset: Select a preset Save +

Access mode: 🚶 🚗 🚝 🚆 Transit modes: All 🚶 🚗 🚝 🚆 Egress mode: 🚶 🚗 🚝 🚆

Date: 06/17/2021 From time: 07:00 To time: 09:00 Maximum transfers: 3

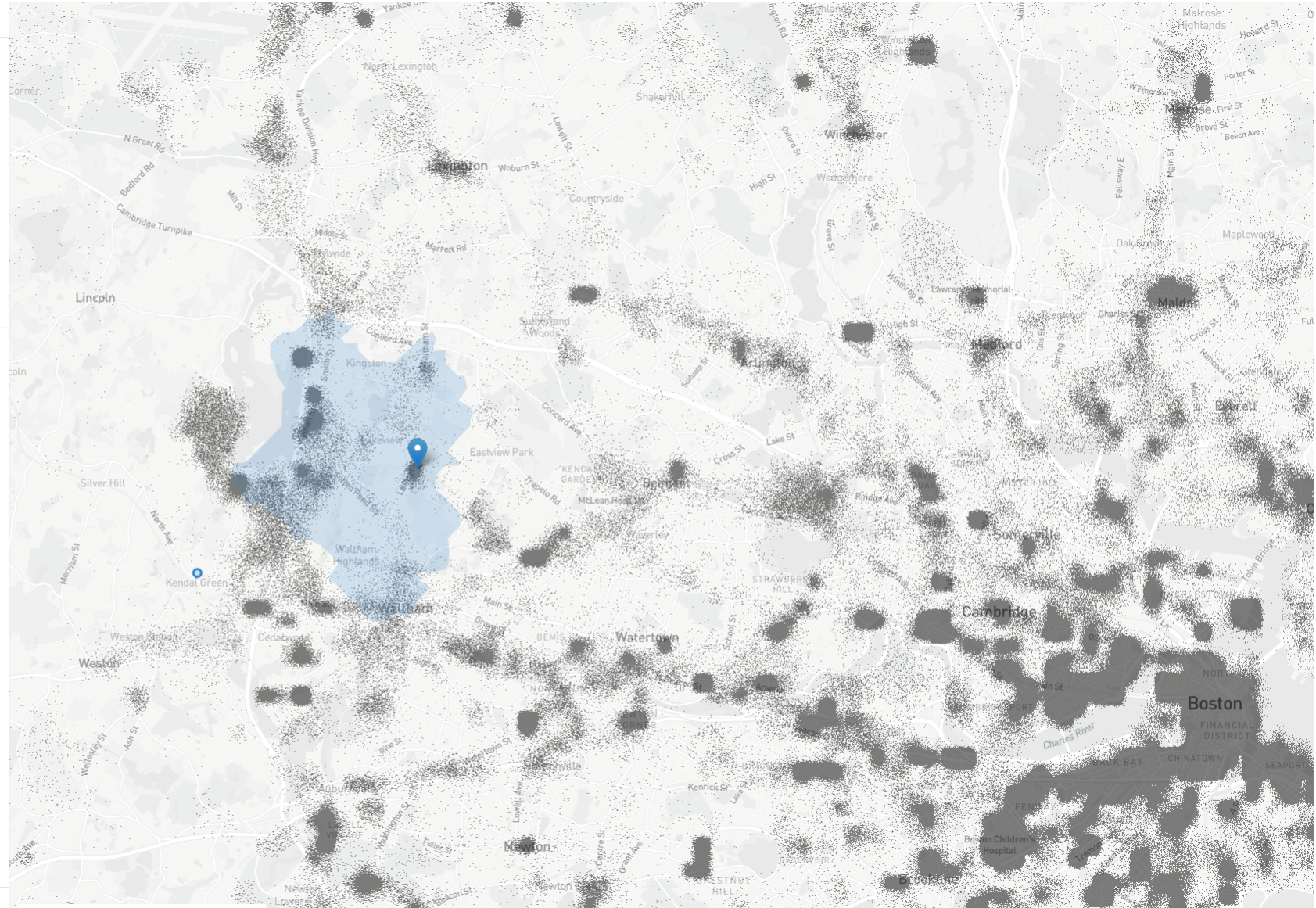
Walk speed: 5 km/h Max walk time: 20 minutes Decay Function: Step Simulated schedules: 200

Routing engine: v6.4 (recommended) Bounds of analysis: Entire region Set custom ✎

**Select a comparison project** Regional analysis +

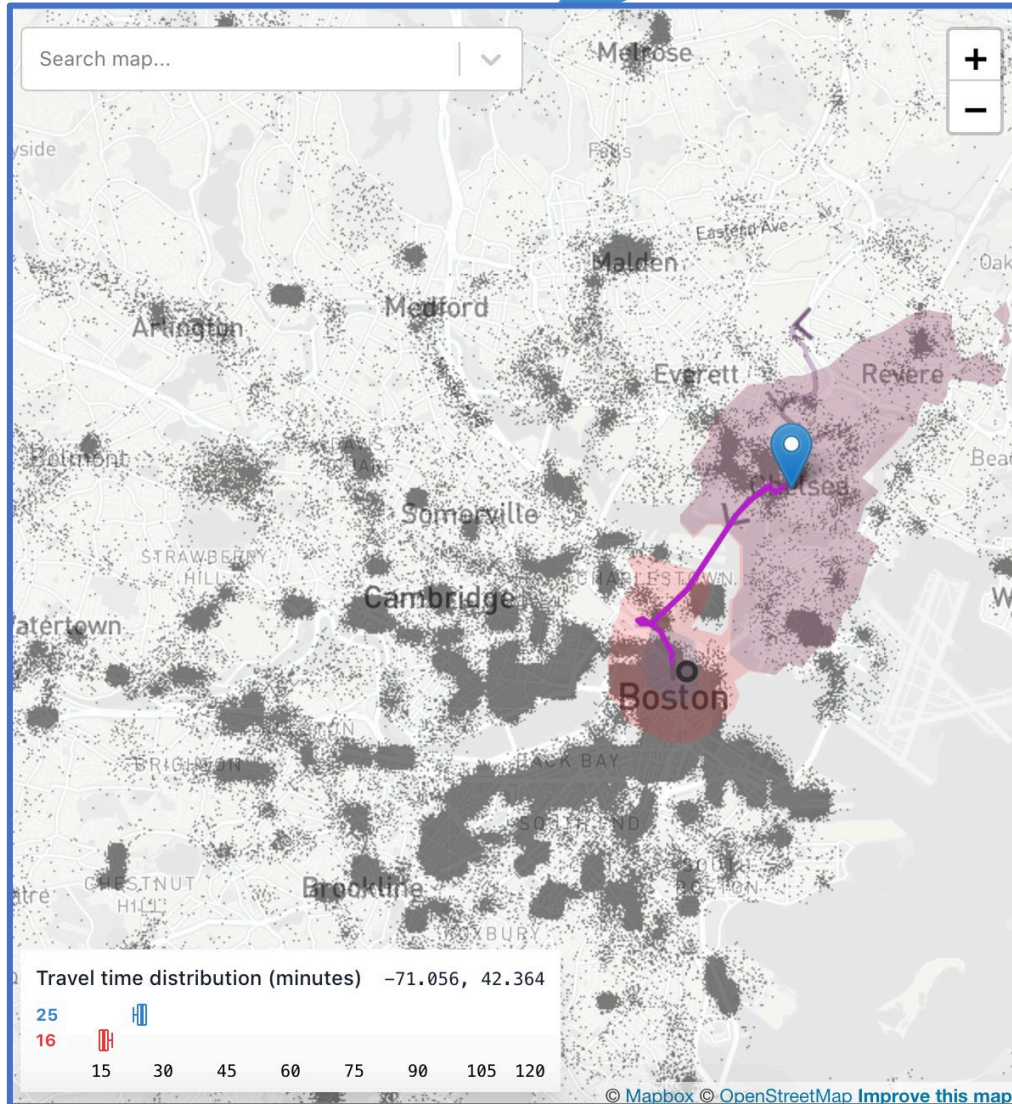
Project: Select... Scenario: Baseline Active preset: Select a preset Save +

Identical request settings





# Resource: conveyal



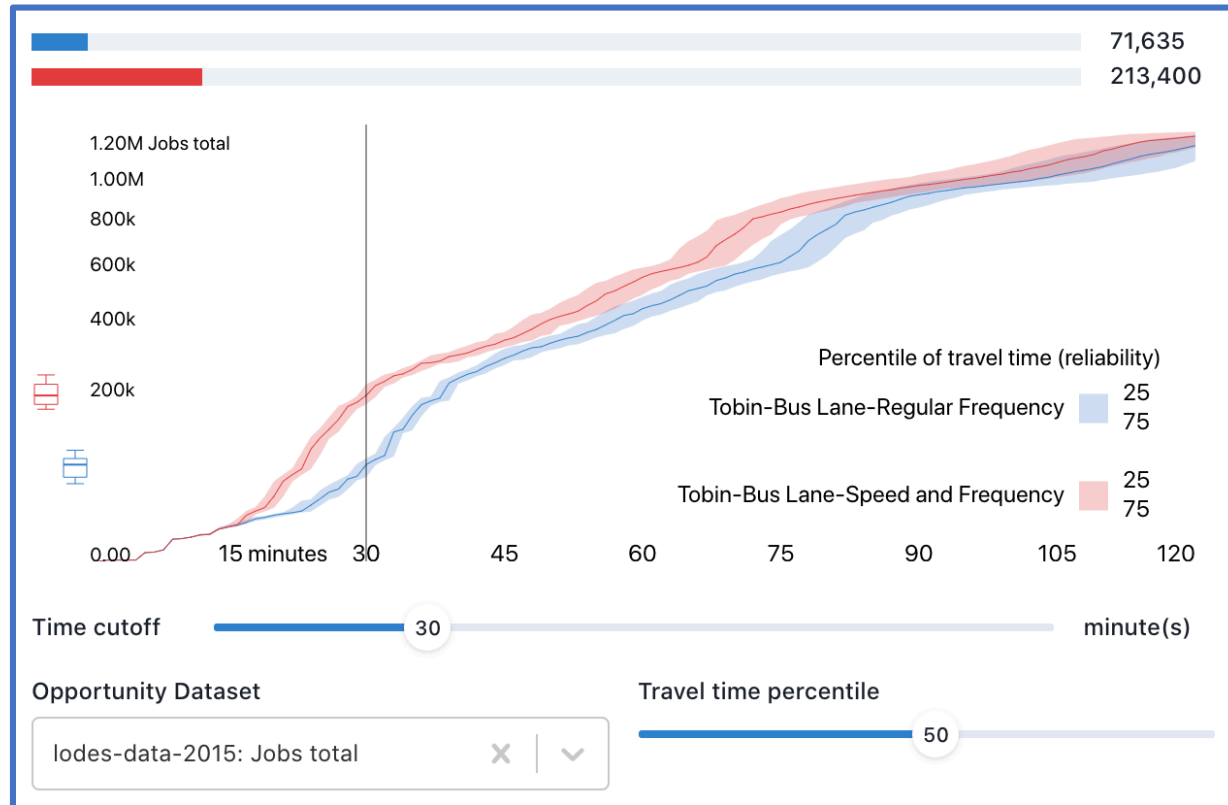
## Conveyal Inputs

- **Bus route:** 111 bus inbound
- **Origin:** Washington Ave @ Cary Ave stop
- **Project specifications:** Double inbound bus speed
- **Travel time:** 30 minutes
- **Mode:** Bus and walking
- **Job Type:** Total jobs

## Results

- 141,765 more jobs become accessible within a 30-minute bus trip (see red area)

# Resource: conveyal



## Conveyal Inputs

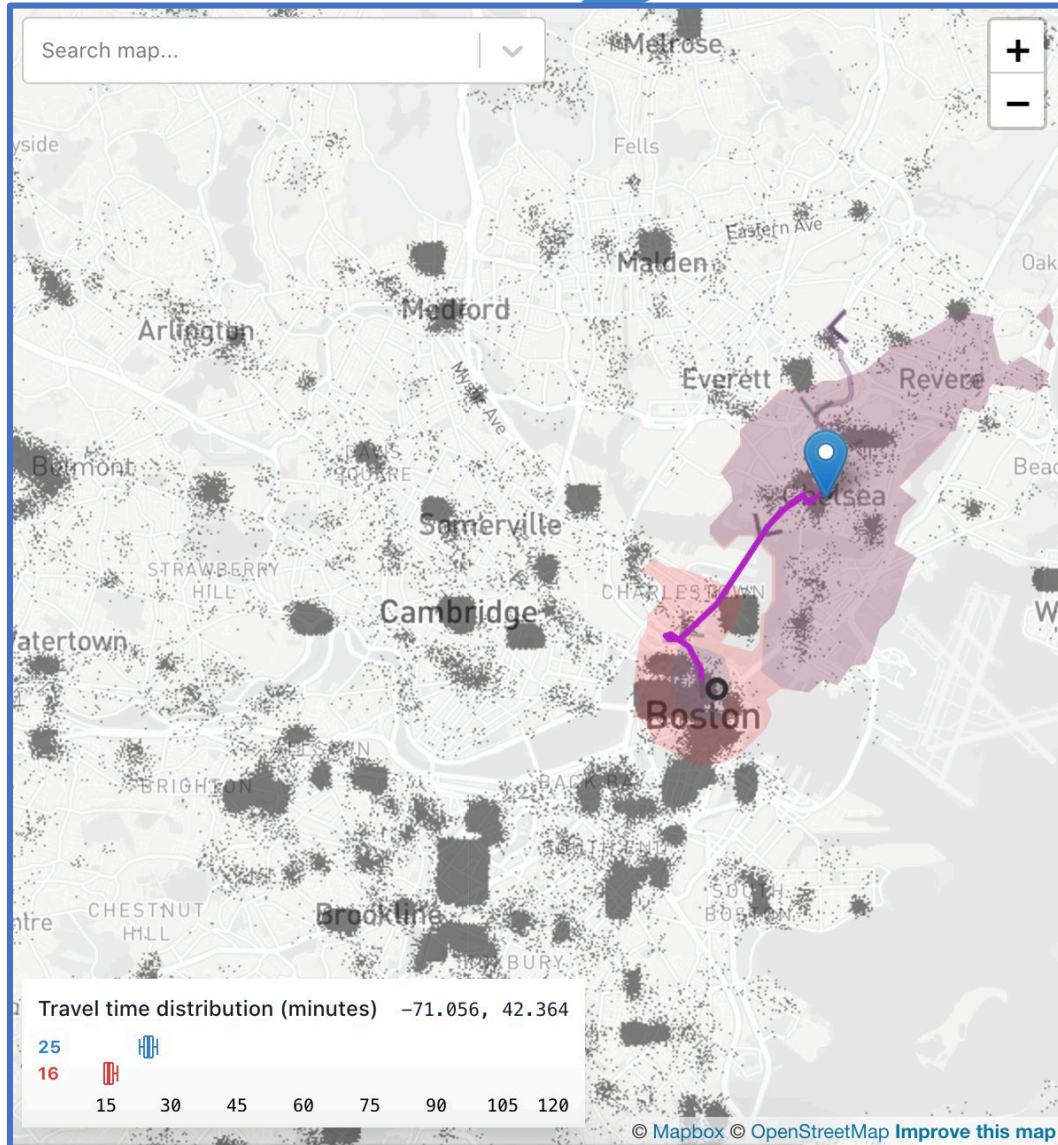
- **Bus route:** 111 bus inbound
- **Origin:** Washington Ave @ Cary Ave stop
- **Project specifications:** Double inbound bus speed
- **Travel time:** 30 minutes
- **Mode:** Bus and walking
- **Job Type:** Total jobs

## Results

- 141,765 more jobs become accessible within a 30-minute bus trip (see red area)



# Resource: conveyal



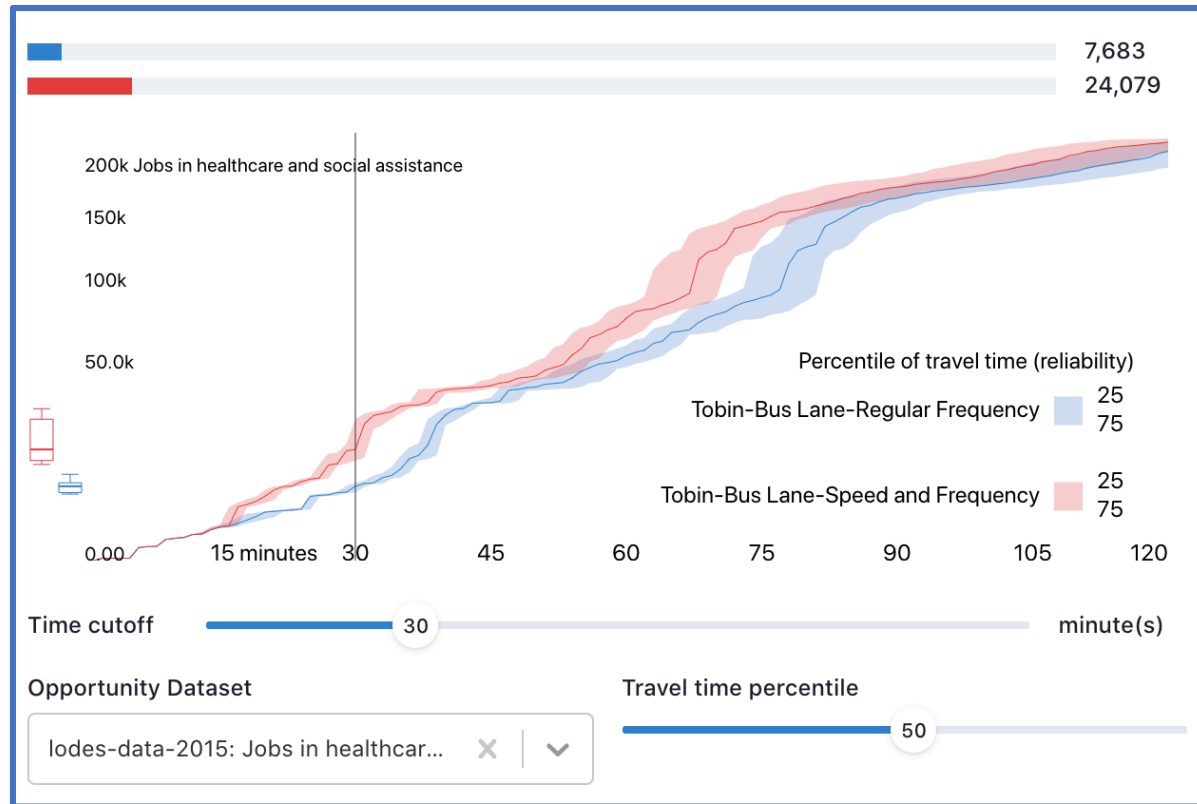
## Conveyal Inputs

- **Bus route:** 111 bus inbound
- **Origin:** Washington Ave @ Cary Ave stop
- **Project specifications:** Double inbound bus speed
- **Travel time:** 30 minutes
- **Mode:** Bus and walking
- **Job Type:** Health care and social assistance

## Results

- 16,396 more jobs in the health care sector become accessible within a 30-minute bus trip (see red area)

# Resource: conveyal



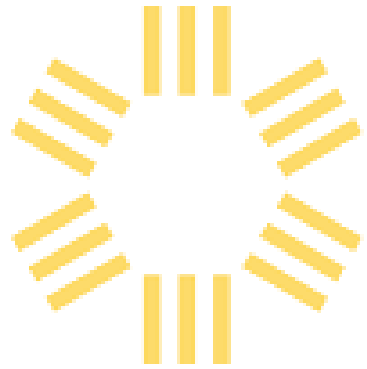
## Conveyal Inputs

- **Bus route:** 111 bus inbound
- **Origin:** Washington Ave @ Cary Ave stop
- **Project specifications:** Double inbound bus speed
- **Travel time:** 30 minutes
- **Mode:** Bus and walking
- **Job Type:** Health care and social assistance

## Results

- 16,396 more jobs in the health care sector become accessible within a 30-minute bus trip (see red area)

Resource:



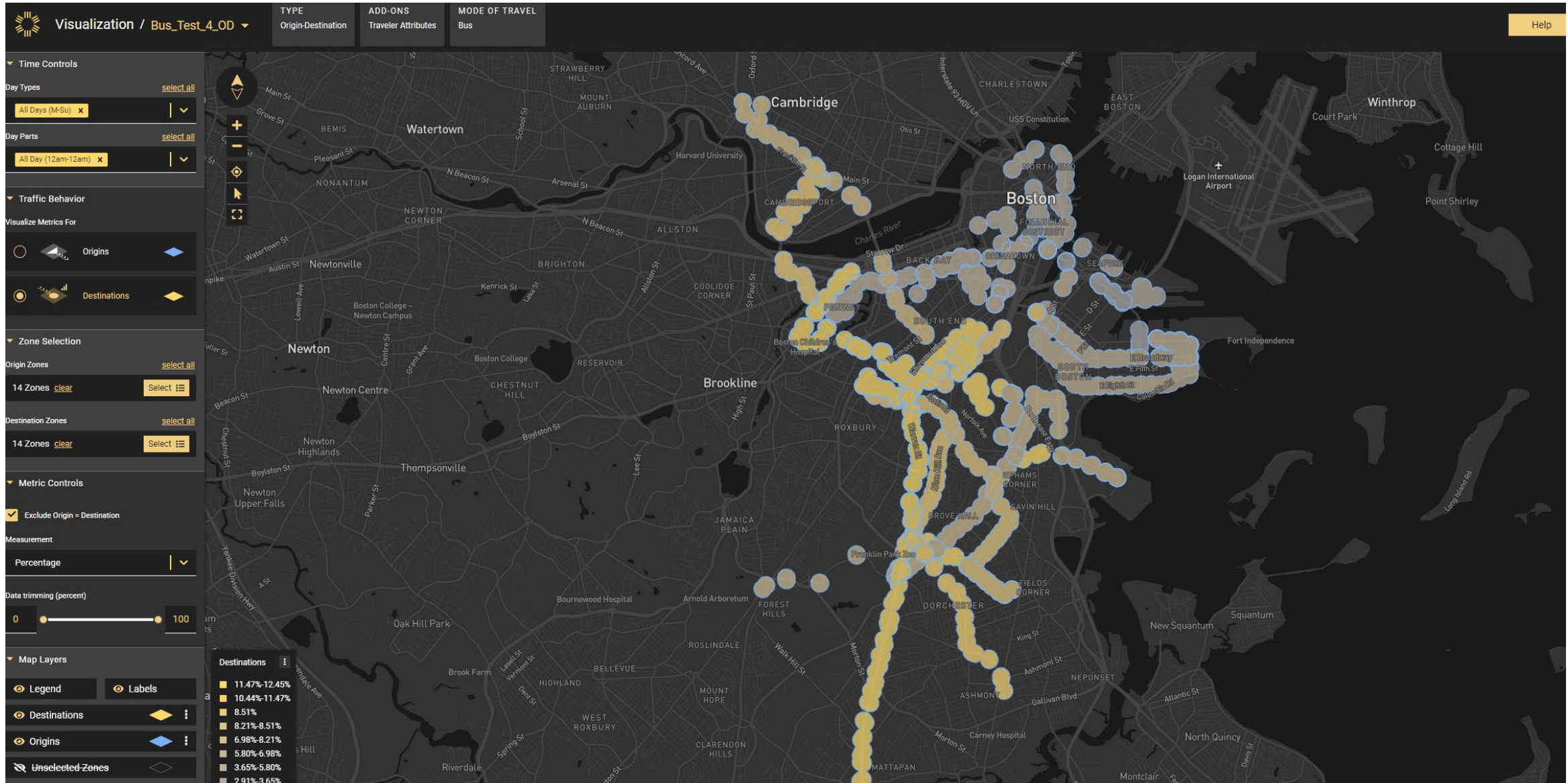
# STREETLIGHT

Big Data for Mobility



# Resource: STREETLIGHT

Big Data for Mobility



# Resource:



# STREETLIGHT

Big Data for Mobility

AutoSave Off 214334\_Bus\_Test\_4\_OD\_od\_traveler\_bus Search

File Home Insert Page Layout Formulas Data Review View Help BLUEBEAM DYMO Label

Clipboard Font Alignment Number Styles Cells Editing Sensitivity

	A	B	C	D	E	F	G	H	I	J	K	L	M	N	O	P	Q	R	S	T	U	V	W	X	Y	Z	AA	AB	AC	AD	AE	
1	Mode of T	Origin Zor	Origin Zor	Origin Zor	Origin Zor	Origin Zor	Destinatic	Destinatic	Destinatic	Destinatic	Destinatic	Day Type	Day Part	Average C	Income Le	Income 2C	Income 35	Income 5C	Income 75	Income 1C	Income 12	Income 15	Income M	No High S	High Scho	Some Coll	Bachelor's	Graduate	White (pe	Black (per	Indian (pe	Asi
2	Bus - StL	Bus Index	1	no	N/A	no		1	no	N/A	no	0: All Days	0: All Day	2264	0.278	0.136	0.11	0.151	0.106	0.069	0.049	0.047	0.054	0.139	0.208	0.181	0.235	0.237	0.544	0.231	0.004	
3	Bus - StL	Bus Index	1	no	N/A	no		1	no	N/A	no	0: All Days	1: Early AM	59	0.3	0.146	0.12	0.143	0.091	0.079	0.044	0.036	0.041	0.167	0.24	0.197	0.209	0.187	0.489	0.275	0.005	
4	Bus - StL	Bus Index	1	no	N/A	no		1	no	N/A	no	0: All Days	2: Peak AM	447	0.285	0.145	0.106	0.149	0.102	0.066	0.052	0.045	0.05	0.143	0.208	0.173	0.233	0.243	0.521	0.247	0.005	
5	Bus - StL	Bus Index	1	no	N/A	no		1	no	N/A	no	0: All Days	3: Mid-Da	720	0.274	0.137	0.114	0.154	0.106	0.068	0.047	0.047	0.053	0.144	0.216	0.186	0.232	0.222	0.534	0.239	0.004	
6	Bus - StL	Bus Index	1	no	N/A	no		1	no	N/A	no	0: All Days	4: Peak PM	676	0.277	0.132	0.108	0.15	0.108	0.07	0.049	0.048	0.058	0.134	0.204	0.182	0.236	0.244	0.558	0.219	0.004	
7	Bus - StL	Bus Index	1	no	N/A	no		1	no	N/A	no	0: All Days	5: Late PM	362	0.259	0.13	0.113	0.151	0.111	0.074	0.051	0.052	0.059	0.128	0.193	0.175	0.244	0.26	0.569	0.21	0.004	
8	Bus - StL	Bus Index	1	no	N/A	no		1	no	N/A	no	1: Weekd:	0: All Day	2498	0.274	0.138	0.111	0.151	0.107	0.069	0.05	0.047	0.053	0.141	0.21	0.181	0.233	0.235	0.539	0.233	0.004	
9	Bus - StL	Bus Index	1	no	N/A	no		1	no	N/A	no	1: Weekd:	1: Early AM	56	0.302	0.151	0.124	0.147	0.085	0.08	0.043	0.034	0.034	0.182	0.253	0.199	0.194	0.172	0.484	0.269	0.005	
10	Bus - StL	Bus Index	1	no	N/A	no		1	no	N/A	no	1: Weekd:	2: Peak AM	548	0.283	0.146	0.106	0.149	0.102	0.065	0.053	0.045	0.051	0.144	0.206	0.172	0.234	0.244	0.522	0.246	0.005	
11	Bus - StL	Bus Index	1	no	N/A	no		1	no	N/A	no	1: Weekd:	3: Mid-Da	765	0.274	0.14	0.115	0.155	0.106	0.068	0.047	0.046	0.049	0.148	0.222	0.188	0.228	0.214	0.524	0.245	0.004	
12	Bus - StL	Bus Index	1	no	N/A	no		1	no	N/A	no	1: Weekd:	4: Peak PM	743	0.278	0.132	0.108	0.15	0.108	0.069	0.05	0.048	0.057	0.136	0.205	0.184	0.235	0.24	0.553	0.222	0.004	
13	Bus - StL	Bus Index	1	no	N/A	no		1	no	N/A	no	1: Weekd:	5: Late PM	386	0.259	0.13	0.112	0.151	0.114	0.075	0.05	0.051	0.058	0.13	0.196	0.174	0.242	0.258	0.572	0.204	0.004	
14	Bus - StL	Bus Index	1	no	N/A	no		1	no	N/A	no	2: Weeker:	0: All Day	1633	0.275	0.13	0.11	0.15	0.104	0.072	0.048	0.05	0.061	0.129	0.197	0.178	0.243	0.253	0.56	0.223	0.004	
15	Bus - StL	Bus Index	1	no	N/A	no		1	no	N/A	no	2: Weeker:	1: Early AM	68	0.295	0.134	0.113	0.135	0.104	0.076	0.046	0.04	0.057	0.135	0.206	0.194	0.245	0.22	0.505	0.288	0.004	
16	Bus - StL	Bus Index	1	no	N/A	no		1	no	N/A	no	2: Weeker:	2: Peak AM	173	0.301	0.137	0.108	0.15	0.096	0.067	0.044	0.05	0.047	0.141	0.217	0.184	0.226	0.232	0.524	0.253	0.005	
17	Bus - StL	Bus Index	1	no	N/A	no		1	no	N/A	no	2: Weeker:	3: Mid-Da	600	0.279	0.125	0.11	0.151	0.104	0.069	0.046	0.051	0.065	0.13	0.197	0.177	0.246	0.25	0.564	0.218	0.004	
18	Bus - StL	Bus Index	1	no	N/A	no		1	no	N/A	no	2: Weeker:	4: Peak PM	494	0.274	0.13	0.107	0.15	0.105	0.078	0.046	0.048	0.062	0.127	0.2	0.176	0.241	0.256	0.576	0.203	0.004	
19	Bus - StL	Bus Index	1	no	N/A	no		1	no	N/A	no	2: Weeker:	5: Late PM	298	0.259	0.132	0.113	0.15	0.104	0.069	0.056	0.055	0.062	0.119	0.18	0.177	0.25	0.274	0.561	0.231	0.004	
20	Bus - StL	Bus Index	1	no	N/A	no		11	no	N/A	no	0: All Days	0: All Day	539	0.312	0.13	0.114	0.149	0.103	0.065	0.043	0.04	0.044	0.187	0.261	0.206	0.198	0.148	0.466	0.307	0.005	
21	Bus - StL	Bus Index	1	no	N/A	no		11	no	N/A	no	0: All Days	1: Early AM	26	0.342	0.141	0.097	0.148	0.1	0.064	0.046	0.032	0.03	0.232	0.269	0.212	0.169	0.118	0.327	0.431	0.005	
22	Bus - StL	Bus Index	1	no	N/A	no		11	no	N/A	no	0: All Days	2: Peak AM	125	0.37	0.123	0.11	0.149	0.094	0.053	0.034	0.033	0.034	0.186	0.263	0.21	0.191	0.15	0.402	0.383	0.007	
23	Bus - StL	Bus Index	1	no	N/A	no		11	no	N/A	no	0: All Days	3: Mid-Da	192	0.326	0.134	0.115	0.146	0.098	0.064	0.039	0.038	0.04	0.194	0.267	0.21	0.186	0.143	0.429	0.332	0.005	
24	Bus - StL	Bus Index	1	no	N/A	no		11	no	N/A	no	0: All Days	4: Peak PM	136	0.259	0.131	0.117	0.149	0.115	0.073	0.053	0.046	0.057	0.174	0.251	0.201	0.219	0.155	0.57	0.213	0.004	
25	Bus - StL	Bus Index	1	no	N/A	no		11	no	N/A	no	0: All Days	5: Late PM	60	0.249	0.126	0.12	0.161	0.115	0.076	0.052	0.05	0.051	0.18	0.254	0.197	0.213	0.156	0.529	0.235	0.003	
26	Bus - StL	Bus Index	1	no	N/A	no		11	no	N/A	no	1: Weekd:	0: All Day	605	0.312	0.13	0.113	0.149	0.104	0.065	0.045	0.039	0.043	0.188	0.263	0.207	0.197	0.145	0.464	0.313	0.005	
27	Bus - StL	Bus Index	1	no	N/A	no		11	no	N/A	no	1: Weekd:	1: Early AM	32	0.357	0.142	0.1	0.145	0.096	0.06	0.048	0.028	0.024	0.25	0.278	0.211	0.159	0.102	0.289	0.464	0.005	
28	Bus - StL	Bus Index	1	no	N/A	no		11	no	N/A	no	1: Weekd:	2: Peak AM	150	0.37	0.124	0.111	0.146	0.093	0.052	0.036	0.033	0.035	0.184	0.259	0.21	0.191	0.156	0.411	0.379	0.007	
29	Bus - StL	Bus Index	1	no	N/A	no		11	no	N/A	no	1: Weekd:	3: Mid-Da	203	0.324	0.136	0.114	0.147	0.099	0.064	0.039	0.038	0.039	0.196	0.272	0.212	0.183	0.137	0.429	0.333	0.005	
30	Bus - StL	Bus Index	1	no	N/A	no		11	no	N/A	no	1: Weekd:	4: Peak PM	154	0.258	0.131	0.115	0.148	0.116	0.074	0.056	0.046	0.056	0.173	0.254	0.202	0.22	0.151	0.568	0.218	0.004	
31	Bus - StL	Bus Index	1	no	N/A	no		11	no	N/A	no	1: Weekd:	5: Late PM	65	0.25	0.118	0.119	0.164	0.117	0.076	0.055	0.05	0.051	0.178	0.26	0.194	0.215	0.153	0.524	0.249	0.003	
32	Bus - StL	Bus Index	1	no	N/A	no		11	no	N/A	no	2: Weeker:	0: All Day	362	0.303	0.132	0.116	0.152	0.102	0.067	0.039	0.041	0.048	0.184	0.249	0.204	0.202	0.161	0.478	0.283	0.004	
33	Bus - StL	Bus Index	1	no	N/A	no		11	no	N/A	no	2: Weeker:	1: Early AM	12	0.239	0.136	0.083	0.163	0.123	0.093	0.039	0.057	0.067	0.115	0.225	0.216	0.231	0.213	0.566	0.221	0.004	
34	Bus - StL	Bus Index	1	no	N/A	no		11	no	N/A	no	2: Weeker:	2: Peak AM	58	0.358	0.118	0.106	0.175	0.098	0.062	0.024	0.03	0.029	0.202	0.286	0.208	0.189	0.115	0.355	0.406	0.006	
35	Bus - StL	Bus Index	1	no	N/A	no		11	no	N/A	no	2: Weeker:	3: Mid-Da	160	0.335	0.129	0.116	0.141	0.095	0.062	0.042	0.037	0.043	0.186	0.249	0.205	0.196	0.164	0.432	0.326	0.005	
36	Bus - StL	Bus Index	1	no	N/A	no		11	no	N/A	no	2: Weeker:	4: Peak PM	89	0.262	0.133	0.123	0.152	0.11	0.069	0.042	0.047	0.062	0.176	0.235	0.198	0.216	0.175	0.581	0.191	0.004	
37	Bus - StL	Bus Index	1	no	N/A	no		11	no	N/A	no	2: Weeker:	5: Late PM	44	0.24	0.155	0.126	0.153	0.107	0.075	0.042	0.049	0.053	0.186	0.233	0.206	0.207	0.168	0.552	0.183	0.003	
38	Bus - StL	Bus Index	1	no	N/A	no		15	no	N/A	no	0: All Days	0: All Day	846	0.319	0.155	0.125	0.145	0.102	0.06	0.036	0.032	0.026	0.237	0.279	0.228	0.145	0.111	0.285	0.437	0.006	

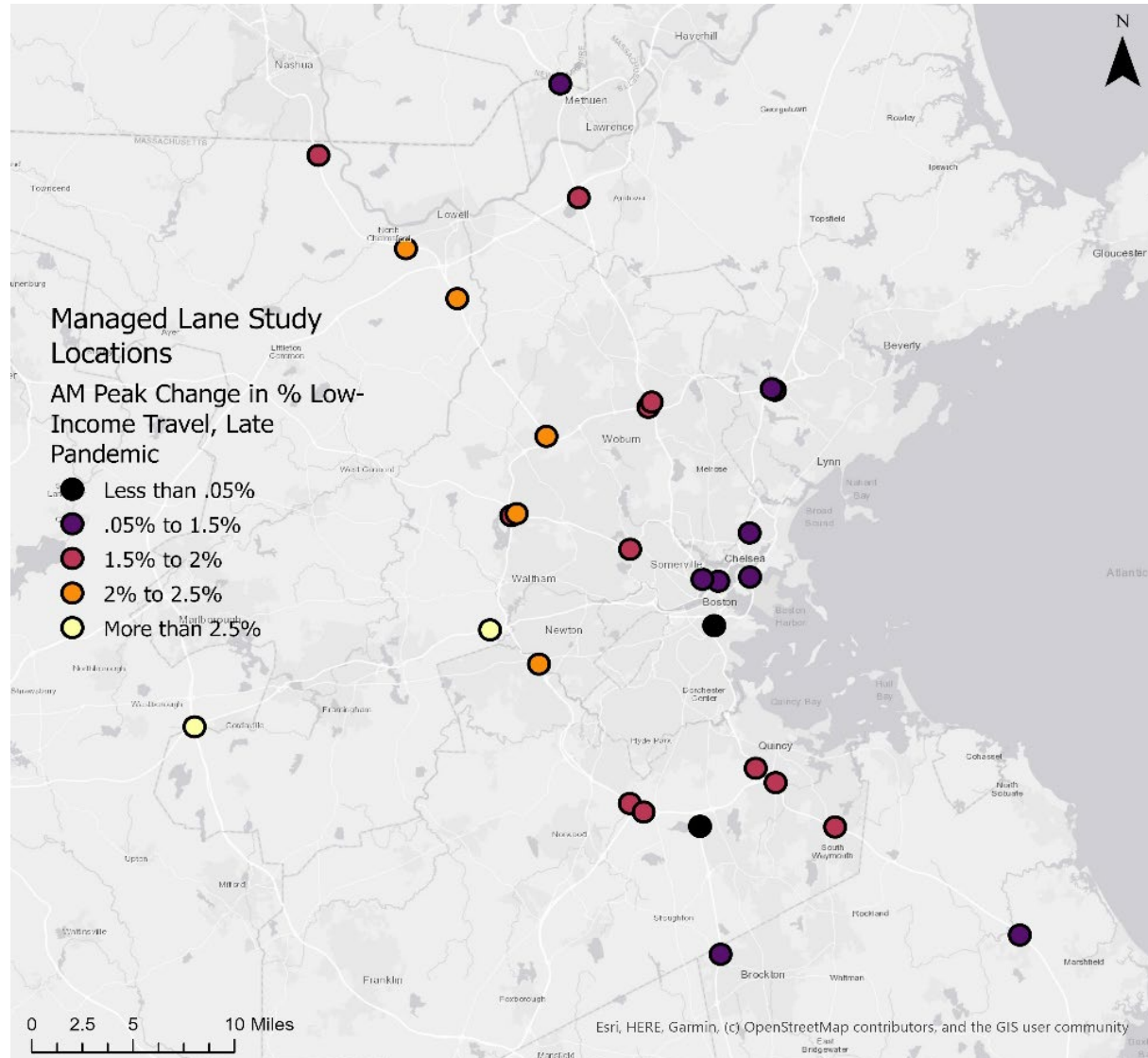






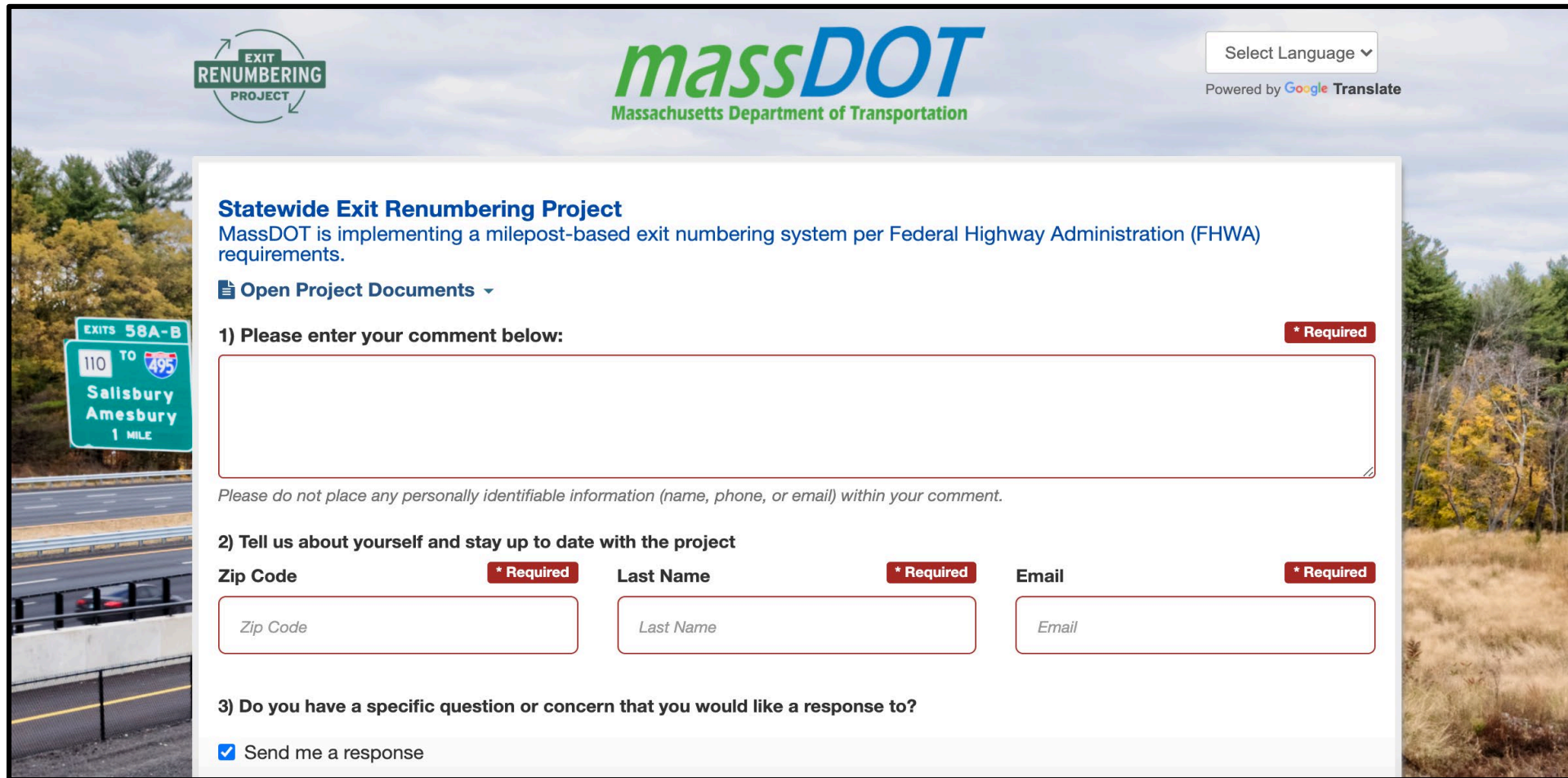
# Resource: STREETLIGHT

Big Data for Mobility



# Initiative: Prioritizing Qualitative Data

# Initiative: Prioritizing Qualitative Data



**EXIT RENUMBERING PROJECT**

**massDOT**  
Massachusetts Department of Transportation

Select Language ▾  
Powered by Google Translate

### Statewide Exit Renumbering Project

MassDOT is implementing a milepost-based exit numbering system per Federal Highway Administration (FHWA) requirements.

Open Project Documents ▾

1) Please enter your comment below: **\* Required**

Please do not place any personally identifiable information (name, phone, or email) within your comment.

2) Tell us about yourself and stay up to date with the project

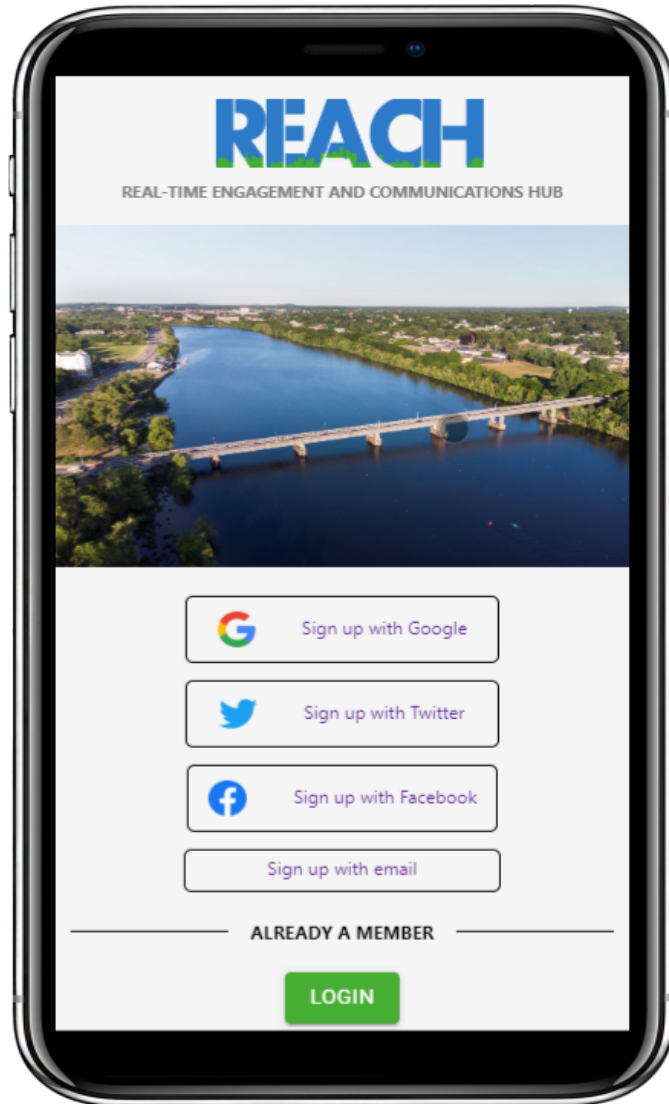
Zip Code **\* Required** Last Name **\* Required** Email **\* Required**

3) Do you have a specific question or concern that you would like a response to?

Send me a response



# Initiative: Prioritizing Qualitative Data



# Initiative: Prioritizing Qualitative Data

**massDOT** Massachusetts Department of Transportation Capital Investment Plan - Comment Tool [Go to CIP Document](#) [Help](#) [Select Language](#) Project Search:

### Filter Projects

MassDOT Division:

Town:

MPO:

Town-wide projects  
 RTA-wide projects  
 Highway District projects

CIP Program:   
(To select multiple CIP programs, hold the Ctrl button and click each program you want to include)

Cost Range: Min: \$  Max: \$

To view town, RTA, or statewide projects which match the current filters, click on that town or RTA in the map

**Point Projects**

- ✚ 1 | Reliability, Aeronautics
- Ⓜ 1 | Reliability, MBTA
- Ⓜ 1 | Reliability, RMV
- 🚆 1 | Reliability, Rail
- ✚ 2 | Modernization, Aeronautics
- Ⓜ 2 | Modernization, MBTA
- Ⓜ 2 | Modernization, RMV
- Ⓜ 3 | Expansion, MBTA
- ★ ORED
- ★ OTP

**Linear Projects**

- Highway, 1 | Reliability
- Highway, 2 | Modernization
- Highway, 3 | Expansion
- - - MBTA, 1 | Reliability
- - - MBTA, 2 | Modernization
- - - MBTA, 3 | Expansion

Esri Canada, Esri, HERE, Garmin, SafeGraph, FAO, METI/NASA, USGS, EPA, NPS

# Initiative: Prioritizing Qualitative Data



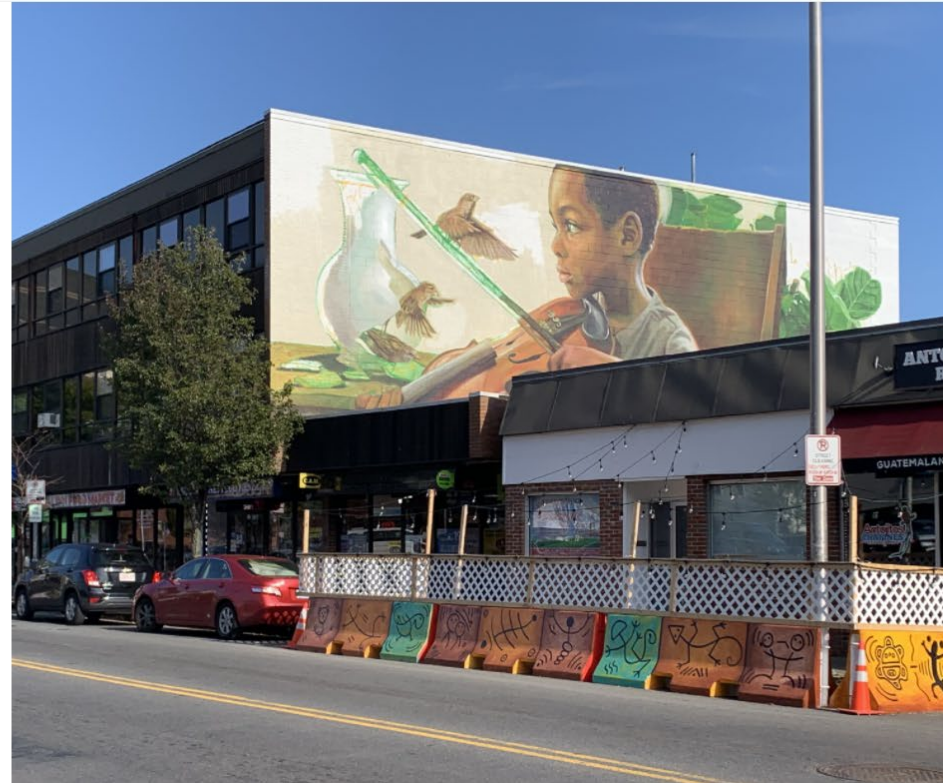
Lynn Safe Streets for People Playbook



## Lynn Safe Streets for People Playbook

Welcome to the Lynn Safe Streets for People Playbook website! Scroll down to get started.

City of Lynn | January 27, 2021





# Initiative: Prioritizing Qualitative Data

- **Email list updates:** Notifications regarding public engagement events and project developments; scroll down to subscribe!
- **Virtual public workshops:** Events hosted on Zoom or a similar platform, featuring facilitated small-group discussions where all participants have a chance to contribute and support for speakers of multiple languages.
- **Online open houses:** Online platforms that participants can access on their own time to view project materials and pre-recorded presentations.
- **Surveys:** Used to share feedback via responses to questions; will be distributed in both virtual and print form.
- **Intercept conversations:** Brief, informal discussions with people using Lynn streets about their experiences.
- **Pilot project demonstrations:** Implementation of street safety and accessibility improvements using temporary materials, and an opportunity to educate people about infrastructure and gather feedback about changes before they are made permanent.



# Initiative: Prioritizing Qualitative Data