

Appendix B

Histograms of Observed Acceleration Rates

This appendix presents histograms of observed acceleration rates for a range of vehicle types and operating conditions. The histograms show the number of observations for each cell as well as the median value. The histograms indicate that the acceleration values are skewed to the left, with long tails toward the higher accelerations. For this reason, median, rather than mean, accelerations provide a better estimate for evaluation. Histograms are provided for the following vehicle types and conditions:

- Median acceleration rates for free-flow passenger cars in free-merge conditions (Figure B-1)
- Median acceleration rates for free-flow trucks in free-merge conditions (Figure B-2)
- Median acceleration rates for free-flow and platooned passenger cars combined in constrained-merge conditions (Figure B-3)

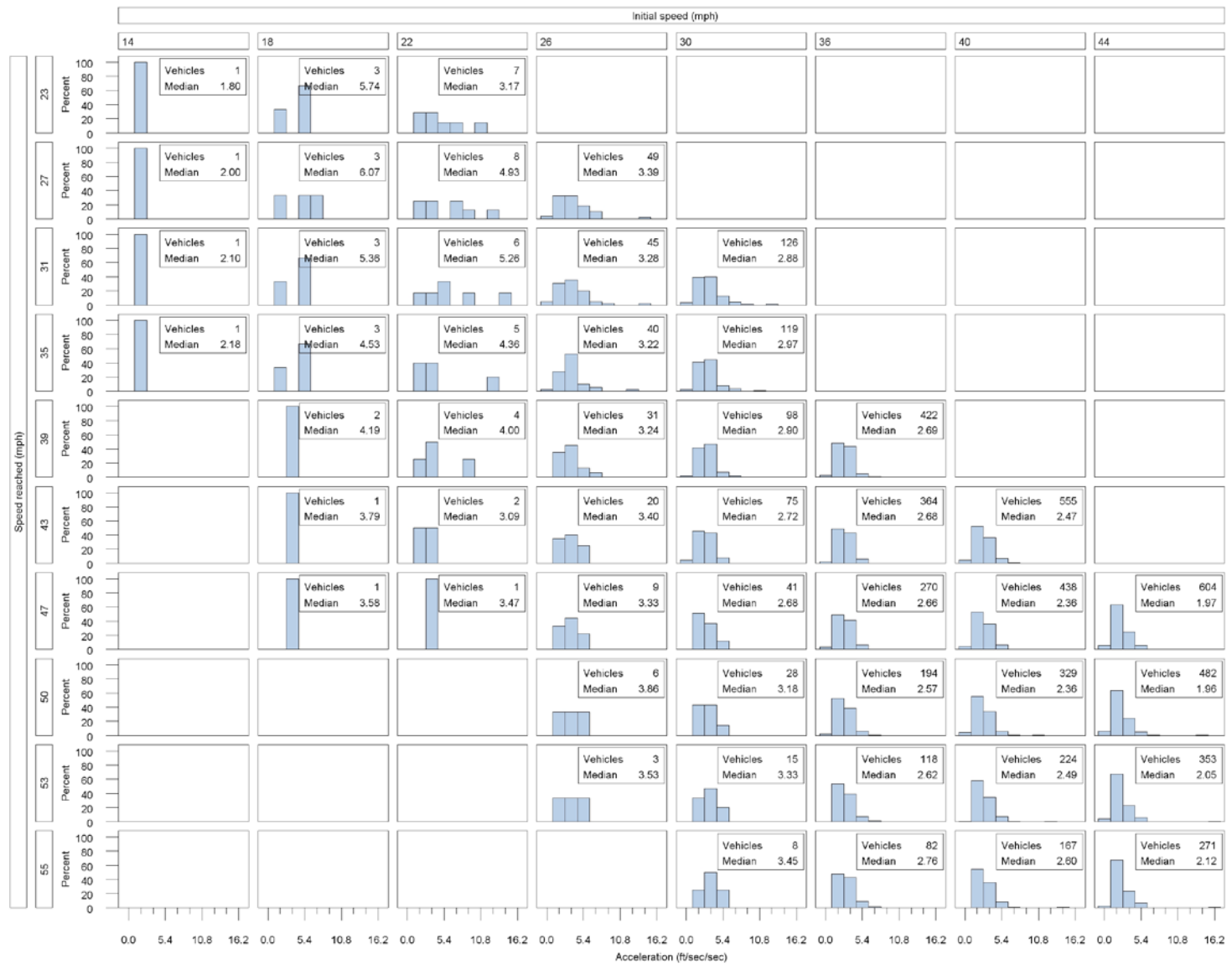


Figure B-1. Histogram of Field Measured Accelerations for Free-Flow Passenger Cars in Free-Merge Conditions

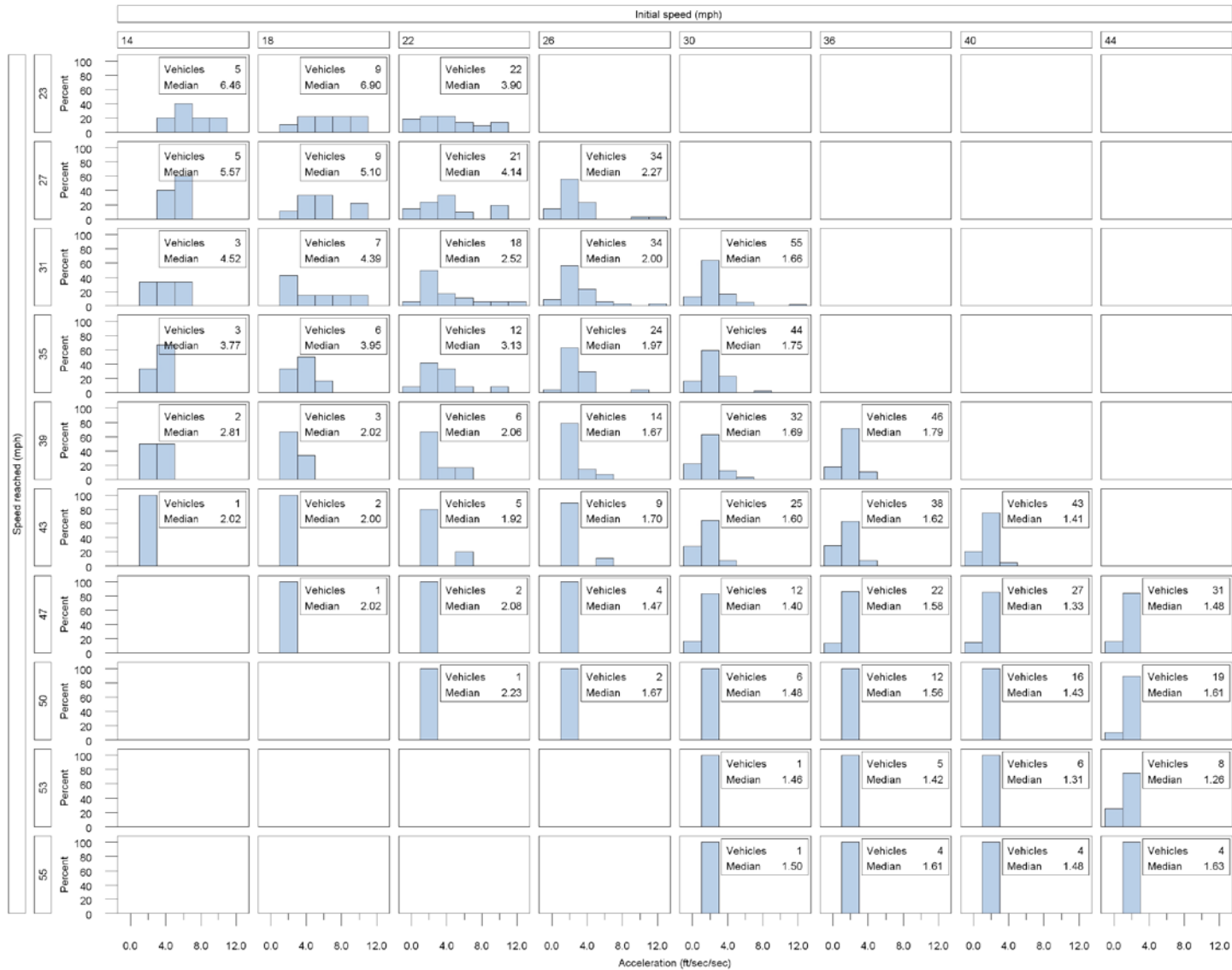


Figure B-2. Histogram of Field Measured Accelerations for Free-Flow Trucks in Free-Merge Conditions

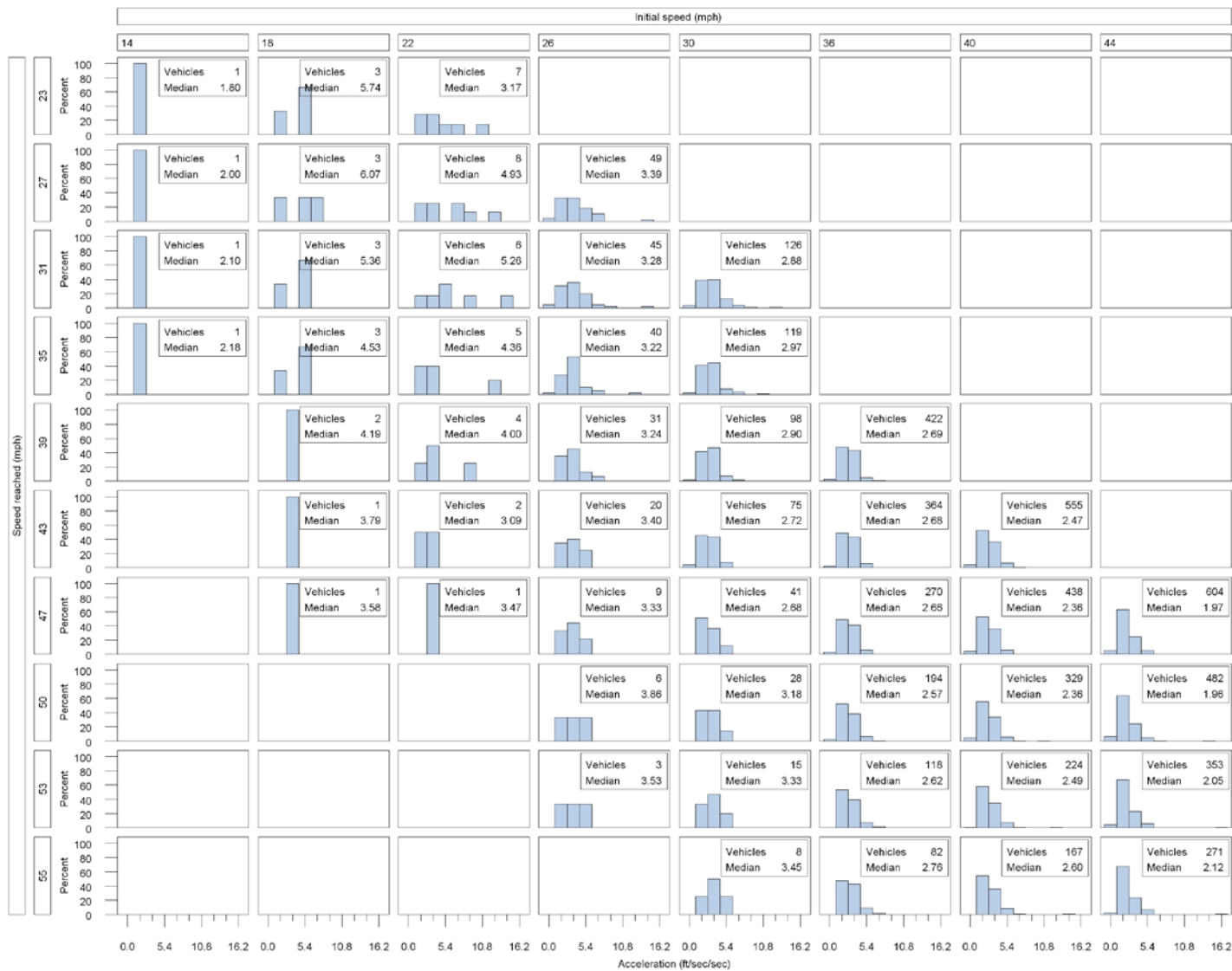


Figure B-3. Histogram of Field Measured Accelerations for Free-Flow and Platooned Passenger Cars in Constrained-Merge Conditions

