

UTILITY LINECODES

UTILITY SYMBOLS

EXISTING	TO BE REMOVED	PROPOSED	TYPE OF UTILITY
			ELECTRIC
			ELECTRIC/TELECOMMUNICATIONS
			ELECTRIC/CABLE TV
			ELECTRIC/TRAFFIC CONTROL
			ELECTRIC/TELECOMMUNICATIONS/CABLE TV
			ELECTRIC/TELECOMMUNICATIONS/CABLE TV/TRAFFIC CONTROL
			ELECTRIC/CABLE TV/TRAFFIC CONTROL
			ELECTRIC/TELECOMMUNICATIONS/TRAFFIC CONTROL
			GUY WIRE
			TELECOMMUNICATIONS
			TELECOMMUNICATIONS/TRAFFIC CONTROL
			TELECOMMUNICATIONS/CABLE TV/TRAFFIC CONTROL
			CABLE TV
			CABLE TV/TRAFFIC CONTROL
			TRAFFIC CONTROL

EXISTING	PROPOSED	TEMPORARY	EXISTING	PROPOSED	TEMPORARY
			MISCELLANEOUS LOS LIMITS OF OVERHEAD AND SUBSURFACE UTILITY INVESTIGATION TH TEST HOLE (OL-A ONLY) EOI END OF INFORMATION Quality Level (OL) DELINEATION Pole ID Sanitary Sewer Manhole (SSMH) ID Conflict Location (UTILITY IMPACT ANALYSIS (UIA) ONLY)		

EXISTING	TO BE REMOVED	PROPOSED	TYPE OF UTILITY
			ELECTRIC (OL-D)
			ELECTRIC (OL-C)
			ELECTRIC (OL-B)
			TELECOMMUNICATIONS (OL-D)
			TELECOMMUNICATIONS (OL-C)
			TELECOMMUNICATIONS (OL-B)
			CABLE TV (OL-D)
			CABLE TV (OL-C)
			CABLE TV (OL-B)
			WATER (OL-D)
			WATER (OL-C)
			WATER (OL-B)
			WATER FOR LABELED PIPE SIZES (OL-D)
			WATER FOR LABELED PIPE SIZES (OL-C)
			WATER FOR LABELED PIPE SIZES (OL-B)
			NON-POTABLE WATER (OL-D)
			NON-POTABLE WATER (OL-C)
			NON-POTABLE WATER (OL-B)
			NON-POTABLE WATER FOR LABELED PIPE SIZES (OL-D)
			NON-POTABLE WATER FOR LABELED PIPE SIZES (OL-C)
			NON-POTABLE WATER FOR LABELED PIPE SIZES (OL-B)
			STEAM (OL-D)
			STEAM (OL-C)
			STEAM (OL-B)
			STEAM FOR LABELED PIPE SIZES (OL-D)
			STEAM FOR LABELED PIPE SIZES (OL-C)
			STEAM FOR LABELED PIPE SIZES (OL-B)
			SANITARY SEWER WITH FLOW DIRECTION (OL-D)
			SANITARY SEWER WITH FLOW DIRECTION (OL-C)
			SANITARY SEWER WITH FLOW DIRECTION (OL-B)
			SANITARY SEWER WITH FLOW DIRECTION FOR LABELED PIPE SIZES (OL-D)
			SANITARY SEWER WITH FLOW DIRECTION FOR LABELED PIPE SIZES (OL-C)
			SANITARY SEWER WITH FLOW DIRECTION FOR LABELED PIPE SIZES (OL-B)
			SANITARY SEWER FORCE MAIN WITH FLOW DIRECTION (OL-D)
			SANITARY SEWER FORCE MAIN WITH FLOW DIRECTION (OL-C)
			SANITARY SEWER FORCE MAIN WITH FLOW DIRECTION (OL-B)
			GAS (OL-D)
			GAS (OL-C)
			GAS (OL-B)
			GAS FOR LABELED PIPE SIZES (OL-D)
			GAS FOR LABELED PIPE SIZES (OL-C)
			GAS FOR LABELED PIPE SIZES (OL-B)
			PETROLEUM (OL-D)
			PETROLEUM (OL-C)
			PETROLEUM (OL-B)
			PETROLEUM FOR LABELED PIPE SIZES (OL-D)
			PETROLEUM FOR LABELED PIPE SIZES (OL-C)
			PETROLEUM FOR LABELED PIPE SIZES (OL-B)
			TRAFFIC CONTROL (OL-D)
			TRAFFIC CONTROL (OL-C)
			TRAFFIC CONTROL (OL-B)
			UNKNOWN UTILITY FOUND IN SUE INVESTIGATION (OL-B)

QUALITY LEVELS AND DEFINITIONS

OL-D DEPICTED ACCORDING TO UTILITY RECORD INFORMATION AND IN-FIELD VISUAL INSPECTION. NO ELECTRONIC DESIGNATING INFORMATION WAS OBTAINED.
 OL-C EXISTING UTILITY STRUCTURES HAVE BEEN FIELD LOCATED AND SURVEYED TO ASSIST IN DEPICTING THE UTILITIES SHOWN ON RECORDS. NO ELECTRONIC DESIGNATING INFORMATION WAS OBTAINED.
 OL-B INFORMATION WAS OBTAINED THROUGH THE APPLICATION OF APPROPRIATE SURFACE GEOPHYSICAL METHODS TO DETERMINE THE EXISTENCE AND APPROPRIATE HORIZONTAL POSITION OF THE SUBSURFACE UTILITIES. OL-B DATA SHOULD BE REPRODUCIBLE BY SURFACE GEOPHYSICS AT ANY POINT OF THEIR DEPICTION. THIS INFORMATION IS SURVEYED TO APPLICABLE TOLERANCES DEFINED BY THE PROJECT AND REDUCED ONTO PLAN DOCUMENTS.
 OL-A OBTAIN PRECISE HORIZONTAL AND VERTICAL POSITION OF THE UTILITY LINE BY EXCAVATING A TEST HOLE. THE TEST HOLE SHALL BE DONE USING VACUUM EXCAVATION OR COMPARABLE NONDESTRUCTIVE EQUIPMENT IN A MANNER AS TO CAUSE NO DAMAGE TO THE UTILITY LINE. AFTER EXCAVATING A TEST HOLE, A FIELD SURVEY SHALL BE PERFORMED TO DETERMINE THE EXACT LOCATION AND POSITION OF THE UTILITY LINE.

TELEPHONE PAIR SIZE TABLE

TELEPHONE PAIR SIZE	TELEPHONE CABLE DIAMETER
5 - 100	0.50 TO 2.00 IN
101 - 2400	UP TO 3.50 IN

FOR PROPOSED/TEMPORARY TRAFFIC CONTROL INFORMATION REFER TO TRAFFIC SIGNAL PLANS

NOT TO SCALE

REVISION DATES			STATE OF GEORGIA DEPARTMENT OF TRANSPORTATION OFFICE: UTILITIES	
			UTILITY PLANS LEGEND	
			DRAWING No.	
			24-0B	

UTILITY POLE DATA SHEET

Table with columns: Description, TBE Job #, Pole #, Pole ID, Pole Owner, Electric, Telecom, Cable TV, Traffic, Other, Northing, Easting, Height, Dia., Material, Misc. Rows include data for poles 1 through 41.

UTILITY POLE DATA SHEET

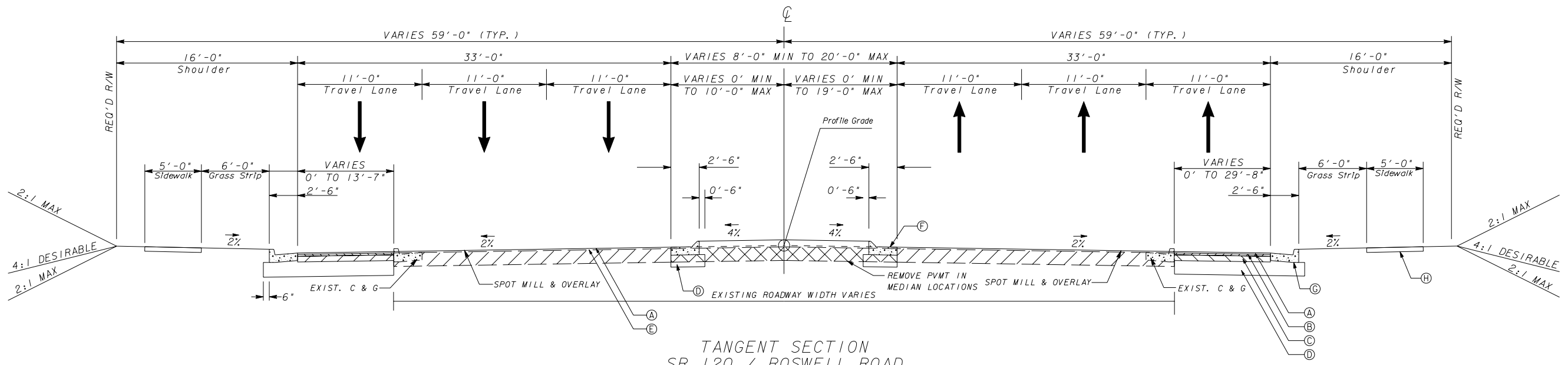
Table with columns: Description, TBE Job #, Pole #, Pole ID, Pole Owner, Electric, Telecom, Cable TV, Traffic, Other, Northing, Easting, Height, Dia., Material, Misc. Rows include data for poles 42 through 92A.

REVISION DATES

STATE OF GEORGIA
DEPARTMENT OF TRANSPORTATION
OFFICE: UTILITIES
UTILITY PLANS
UTILITY POLE DATA
SR 120/ROSWELL RD. WIDENING

DRAWING No. 24-0C

NOT TO SCALE

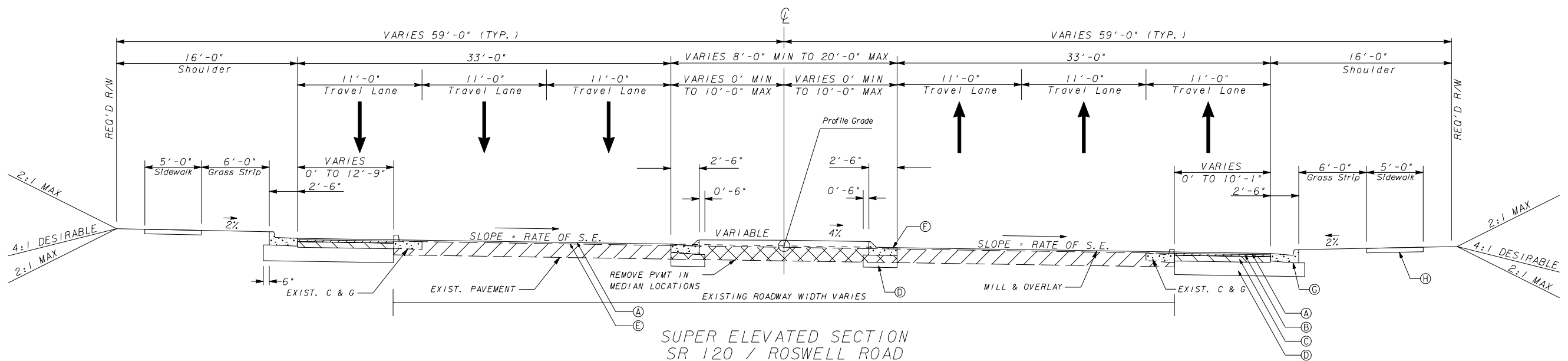


TANGENT SECTION
SR 120 / ROSWELL ROAD

STA. 14+95.93 TO 24+67.00
STA. 35+89.00 TO 62+90.00
STA. 86+88.96 TO 90+50.00

SLOPE CONTROLS		
SLOPE	CUT	FILL
4:1	0-10'	0-10'
3:1	--	--
2:1	OVER 10'	OVER 10'

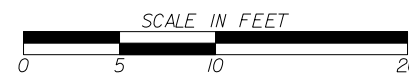
PAVEMENT MATERIAL SCHEDULE	
(A)	RECYCLED ASPH. CONC. 12.5 mm SMA, GP 2 ONLY, 165 LBS./SY, DESIGN MIX LEVEL D
(B)	RECYCLED ASPH. CONC. 19 mm SUPERPAVE, GP 1 OR GP2, 330 LBS./SY, DESIGN MIX LEVEL D
(C)	RECYCLED ASPH. CONC. 25 mm SUPERPAVE, GP 1 OR GP2, 880 LBS./SY, DESIGN MIX LEVEL C
(D)	GRADED AGGREGATE BASE COURSE, 12"
(E)	ASPHALTIC CONCRETE LEVELING, AS REQUIRED
(F)	CONCRETE CURB & GUTTER, 8" X 30", TYPE 7, GA STD. 9032 B
(G)	CONCRETE CURB & GUTTER, 8" X 30", TYPE 2, GA STD. 9032 B
(H)	5' CONCRETE SIDEWALK, 4 INCH THICK



SUPER ELEVATED SECTION
SR 120 / ROSWELL ROAD

STA. 24+67.00 TO 35+89.00
STA. 62+90.00 TO 66+29.91

NOTE: SEE DRAWING NO. 5-07 FOR STD. DETAILS

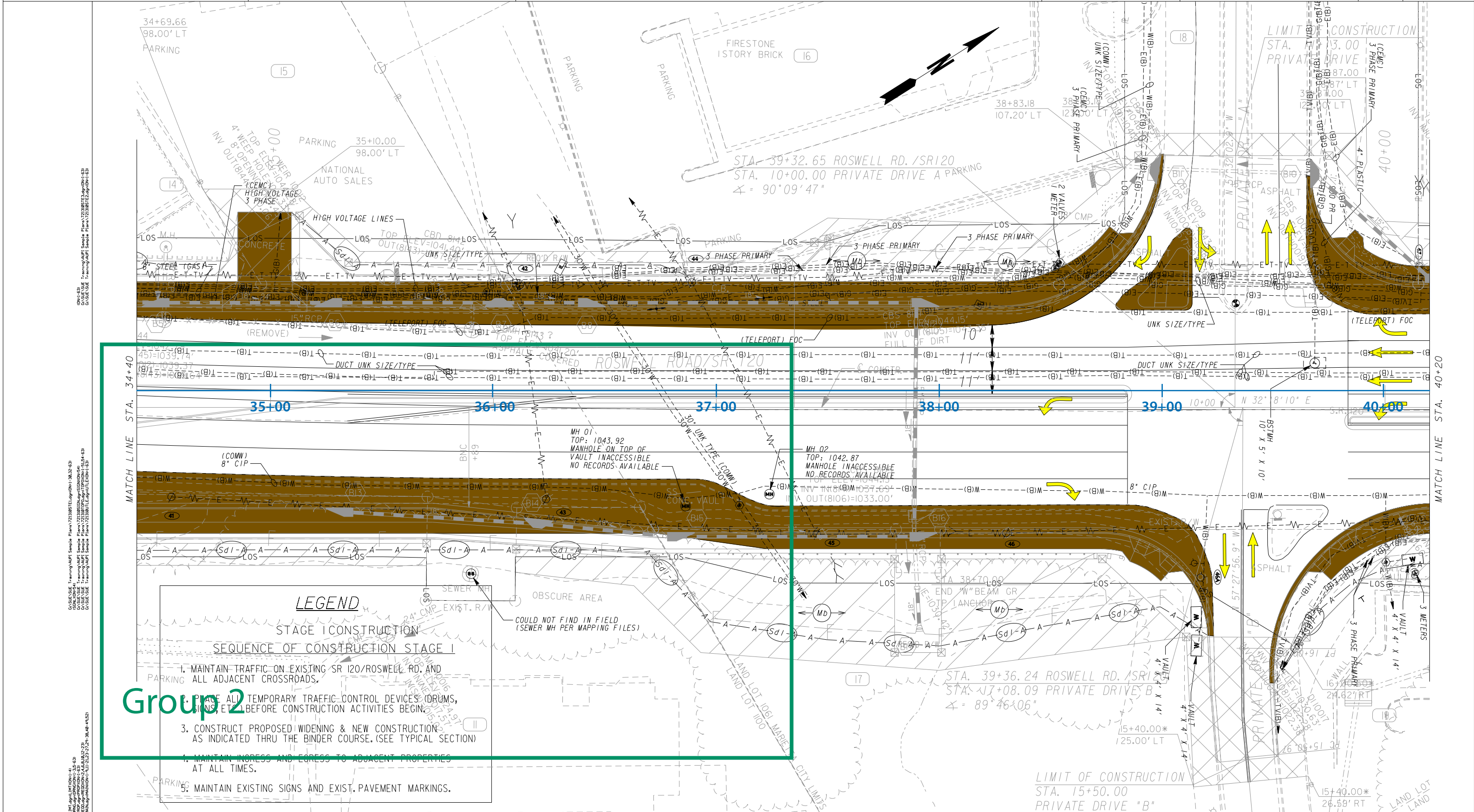


REVISION DATES

STATE OF GEORGIA
DEPARTMENT OF TRANSPORTATION
OFFICE: URBAN DESIGN
TYPICAL SECTIONS

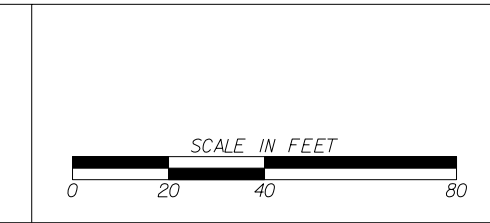
SR 120/ROSWELL RD. WIDENING

DRAWING No.
5-01



PROPERTY AND EXISTING R/W LINE	---
REQUIRED R/W LINE	---
CONSTRUCTION LIMITS	C F
EASEMENT FOR CONSTR & MAINTENANCE OF SLOPES	[Hatched Box]
EASEMENT FOR CONSTR OF SLOPES	[Hatched Box]
EASEMENT FOR CONSTR OF DRIVES	[Hatched Box]

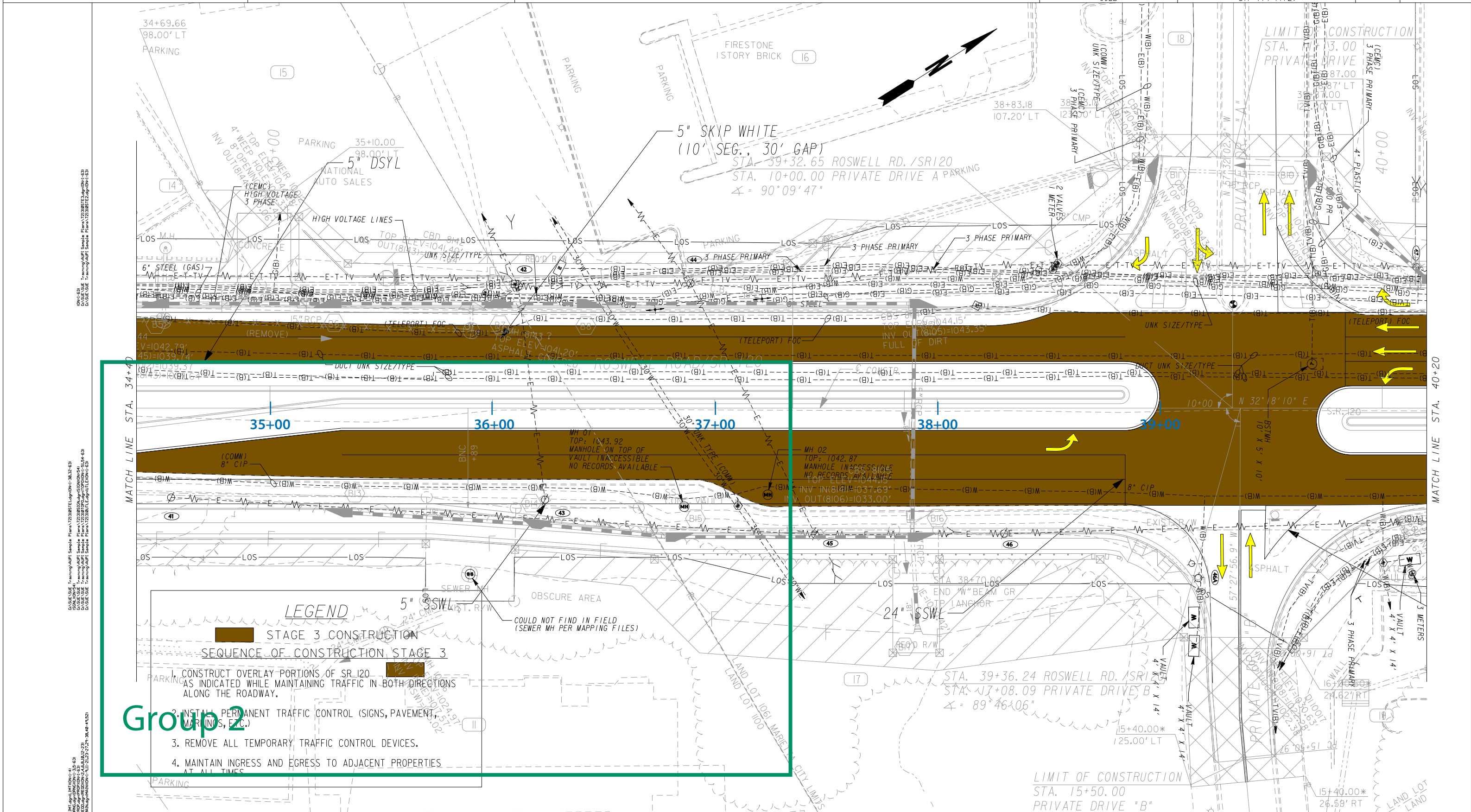
BEGIN LIMIT OF ACCESS.....	BLA
END LIMIT OF ACCESS.....	ELA
LIMIT OF ACCESS	---
R/W AND LIMIT OF ACCESS	
EXISTING R/W LINE	---



REVISION DATES	

STATE OF GEORGIA
 DEPARTMENT OF TRANSPORTATION
 OFFICE: URBAN DESIGN
 MAINLINE PLAN
 STAGE I CONSTRUCTION
 SR 120/ROSWELL RD. WIDENING
 STA. 34+40 - STA. 40+20

DRAWING No. **13-05**



LEGEND

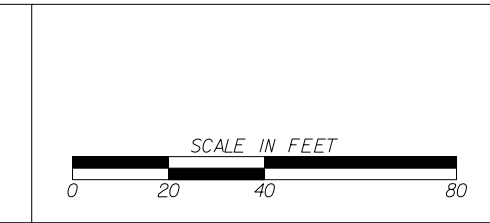
Group 2

SEQUENCE OF CONSTRUCTION STAGE 3

1. CONSTRUCT OVERLAY PORTIONS OF SR 120 AS INDICATED WHILE MAINTAINING TRAFFIC IN BOTH DIRECTIONS ALONG THE ROADWAY.
2. INSTALL PERMANENT TRAFFIC CONTROL (SIGNS, PAVEMENT MARKINGS, ETC.)
3. REMOVE ALL TEMPORARY TRAFFIC CONTROL DEVICES.
4. MAINTAIN INGRESS AND EGRESS TO ADJACENT PROPERTIES AT ALL TIMES.

PROPERTY AND EXISTING R/W LINE	---
REQUIRED R/W LINE	---
CONSTRUCTION LIMITS	C F
EASEMENT FOR CONSTR & MAINTENANCE OF SLOPES	▨
EASEMENT FOR CONSTR OF SLOPES	▩
EASEMENT FOR CONSTR OF DRIVES	▧

BEGIN LIMIT OF ACCESS.....	BLA
END LIMIT OF ACCESS.....	ELA
LIMIT OF ACCESS	---
R/W AND LIMIT OF ACCESS	▨
EXISTING R/W LINE	---

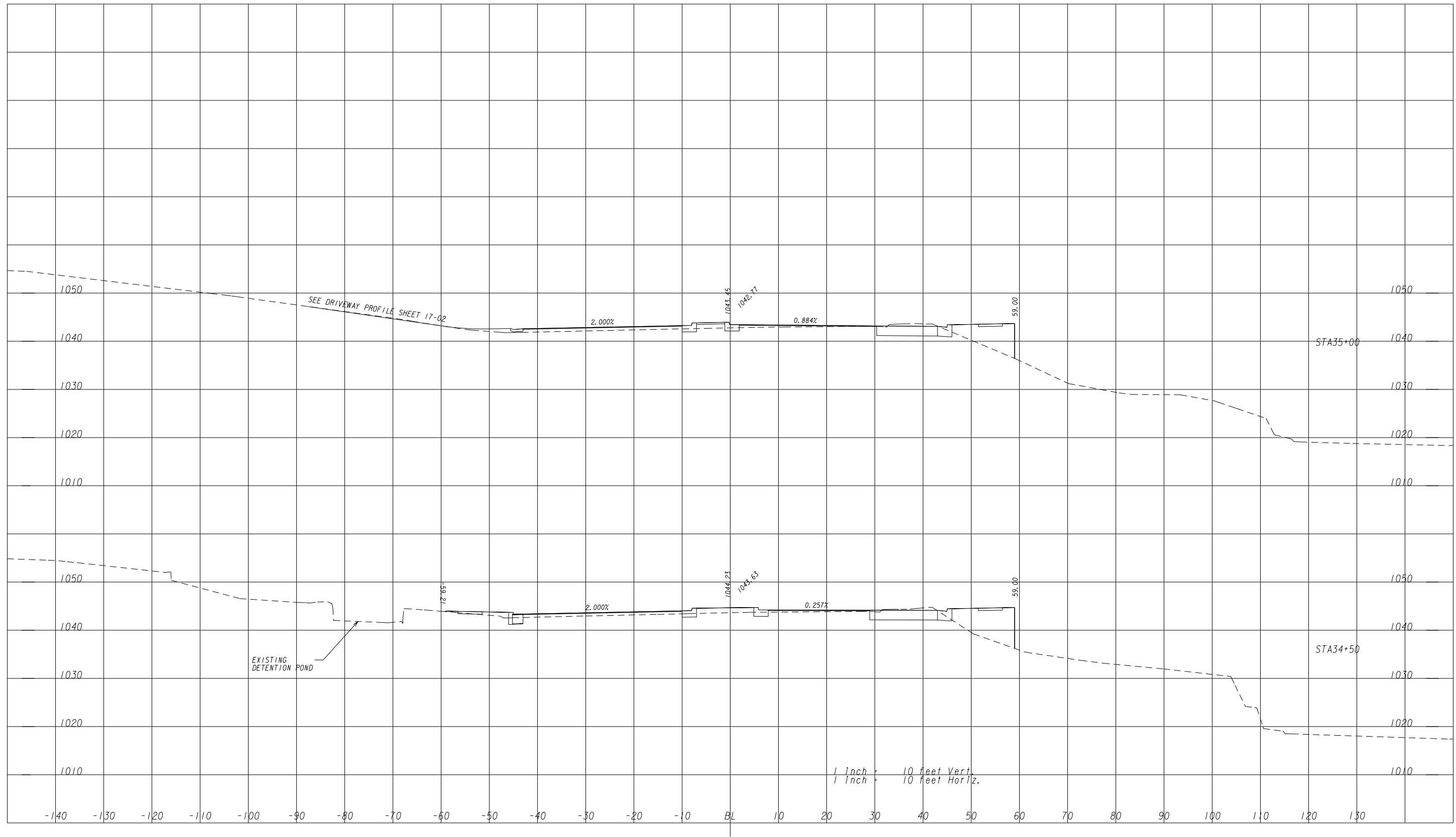


REVISION DATES

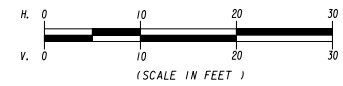
STATE OF GEORGIA
DEPARTMENT OF TRANSPORTATION
OFFICE: URBAN DESIGN

MAINLINE PLAN
STAGE 3 CONSTRUCTION
SR 120/ROSWELL RD. WIDENING
STA. 34+40 - STA. 40+20

DRAWING No. 13-05



G:\SUE\SUE Training\AUP\ Sample Plans\721310XS01.dgn(0N+1-56, 58-63)
 G:\SUE\SUE Training\AUP\ Sample Plans\721310XS01.dgn(0N+1-56, 58-63)
 G:\SUE\SUE Training\AUP\ Sample Plans\721310XS01.dgn(0N+1-56, 58-63)
 G:\SUE\SUE Training\AUP\ Sample Plans\721310XS01.dgn(0N+1-56, 58-63)
 G:\SUE\SUE Training\AUP\ Sample Plans\721310XS01.dgn(0N+1-56, 58-63)

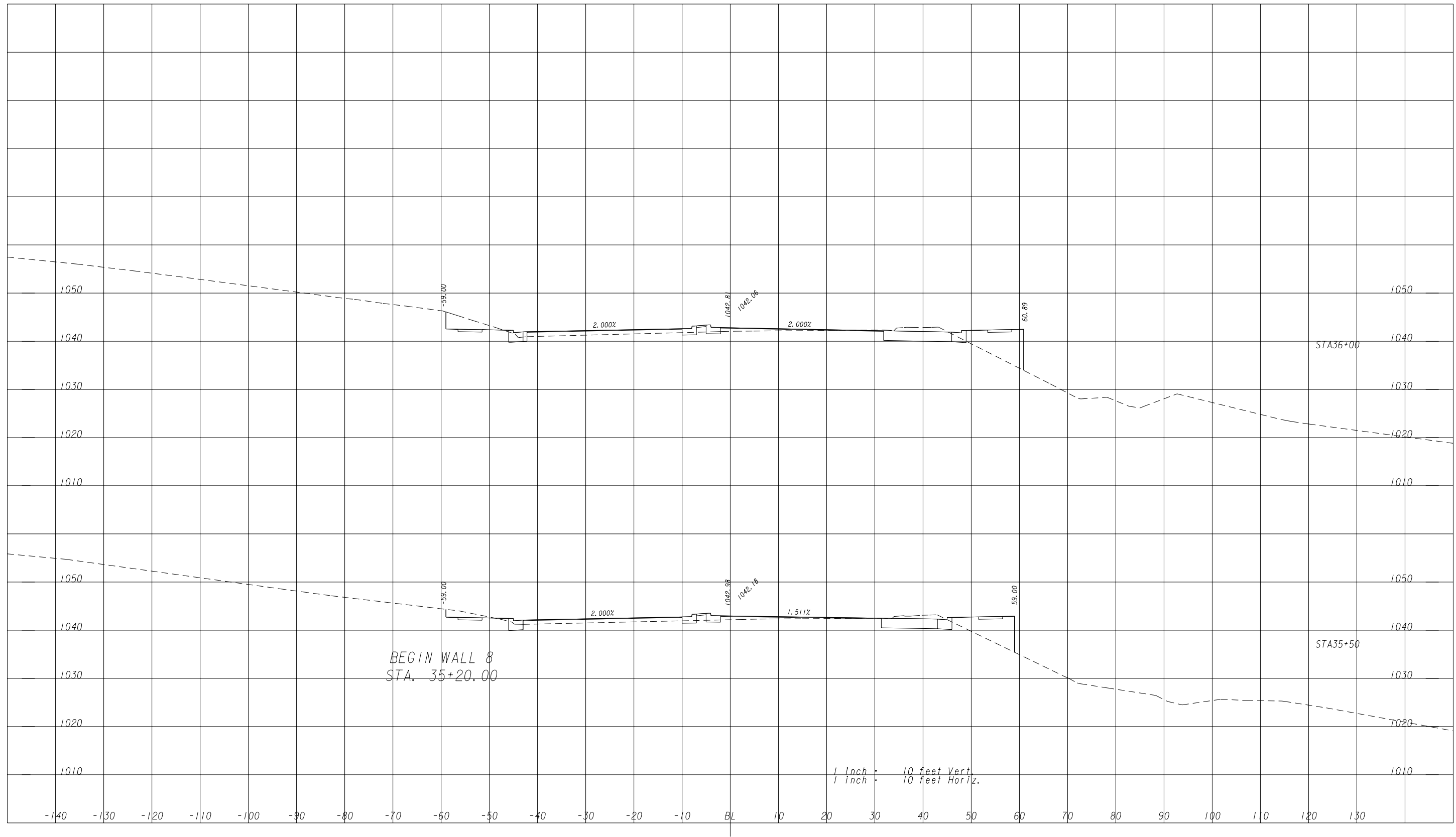


REVISION DATES		

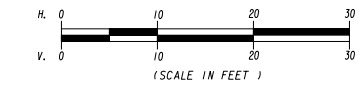
STATE OF GEORGIA
DEPARTMENT OF TRANSPORTATION
OFFICE: URBAN DESIGN
EARTHWORK CROSS SECTIONS

SR 120/ROSWELL RD. WIDENING

DRAWING No.
23-12



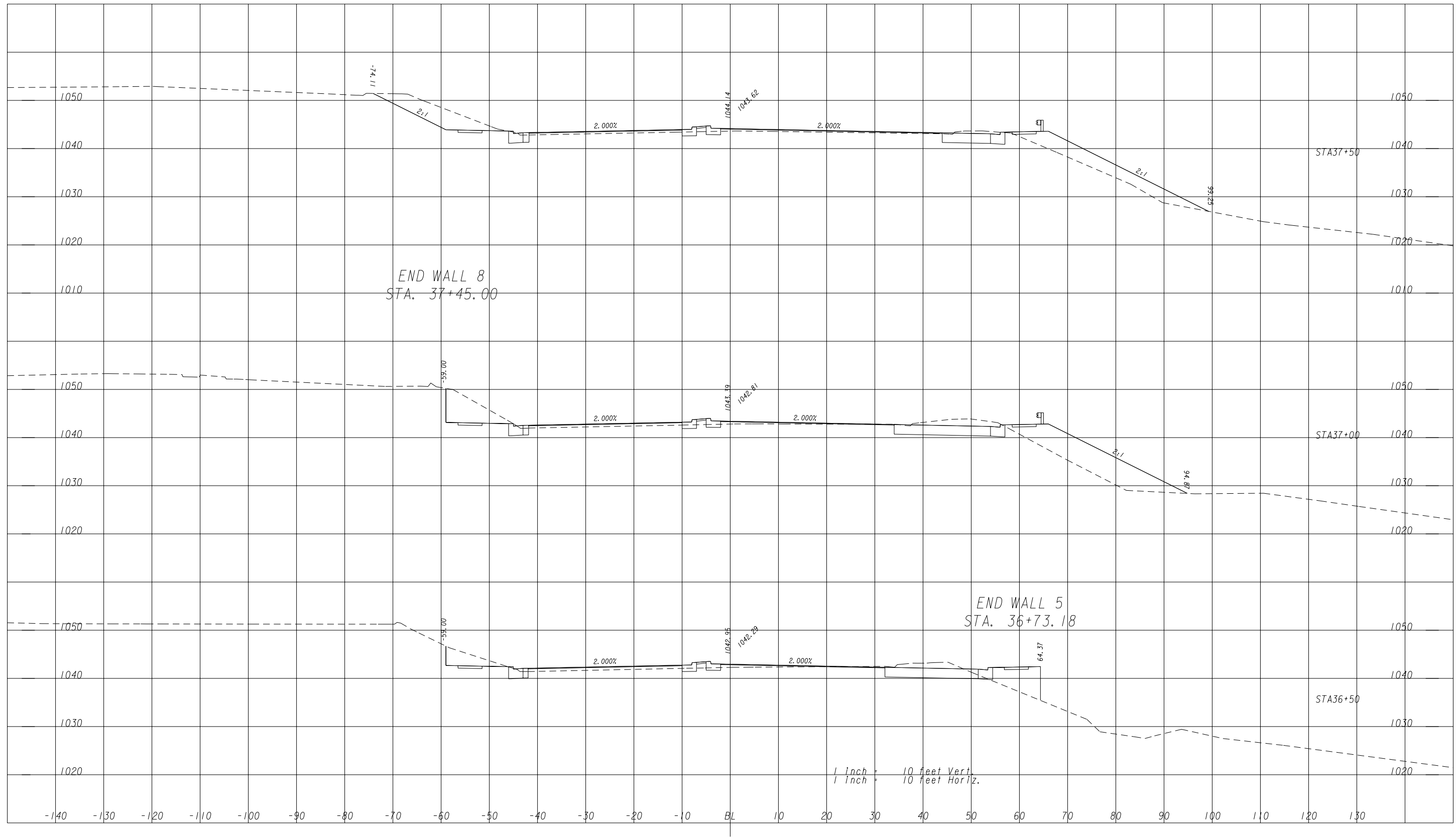
G:\SUE\SUE Training\AUP\ Sample Plans\721310XS01.dgn(0N+1-56, 58-63)
 G:\SUE\SUE Training\AUP\ Sample Plans\721310XS01.dgn(0N+1-56, 58-63)
 G:\SUE\SUE Training\AUP\ Sample Plans\721310XS01.dgn(0N+1-56, 58-63)
 G:\SUE\SUE Training\AUP\ Sample Plans\721310XS01.dgn(0N+1-56, 58-63)
 G:\SUE\SUE Training\AUP\ Sample Plans\721310XS01.dgn(0N+1-56, 58-63)



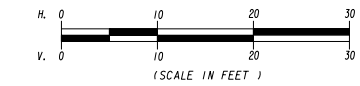
REVISION DATES		

STATE OF GEORGIA
 DEPARTMENT OF TRANSPORTATION
 OFFICE: URBAN DESIGN
 EARTHWORK CROSS SECTIONS
 SR 120/ROSWELL RD. WIDENING

DRAWING No.
23-13



G:\SUE\SUE Training\AUP\ Sample Plans\721310XS01.dgn(0N+1-56, 58-63)
 G:\SUE\SUE Training\AUP\ Sample Plans\721310XS01.dgn(0N+1-56, 58-63)
 G:\SUE\SUE Training\AUP\ Sample Plans\721310XS01.dgn(0N+1-56, 58-63)
 G:\SUE\SUE Training\AUP\ Sample Plans\721310XS01.dgn(0N+1-56, 58-63)
 G:\SUE\SUE Training\AUP\ Sample Plans\721310XS01.dgn(0N+1-56, 58-63)
 G:\SUE\SUE Training\AUP\ Sample Plans\721310XS01.dgn(0N+1-56, 58-63)
 G:\SUE\SUE Training\AUP\ Sample Plans\721310XS01.dgn(0N+1-56, 58-63)
 G:\SUE\SUE Training\AUP\ Sample Plans\721310XS01.dgn(0N+1-56, 58-63)
 G:\SUE\SUE Training\AUP\ Sample Plans\721310XS01.dgn(0N+1-56, 58-63)
 G:\SUE\SUE Training\AUP\ Sample Plans\721310XS01.dgn(0N+1-56, 58-63)

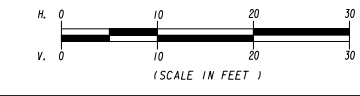


REVISION DATES	

STATE OF GEORGIA
 DEPARTMENT OF TRANSPORTATION
 OFFICE: URBAN DESIGN
 EARTHWORK CROSS SECTIONS
 SR 120/ROSWELL RD. WIDENING
 DRAWING No.
23-14



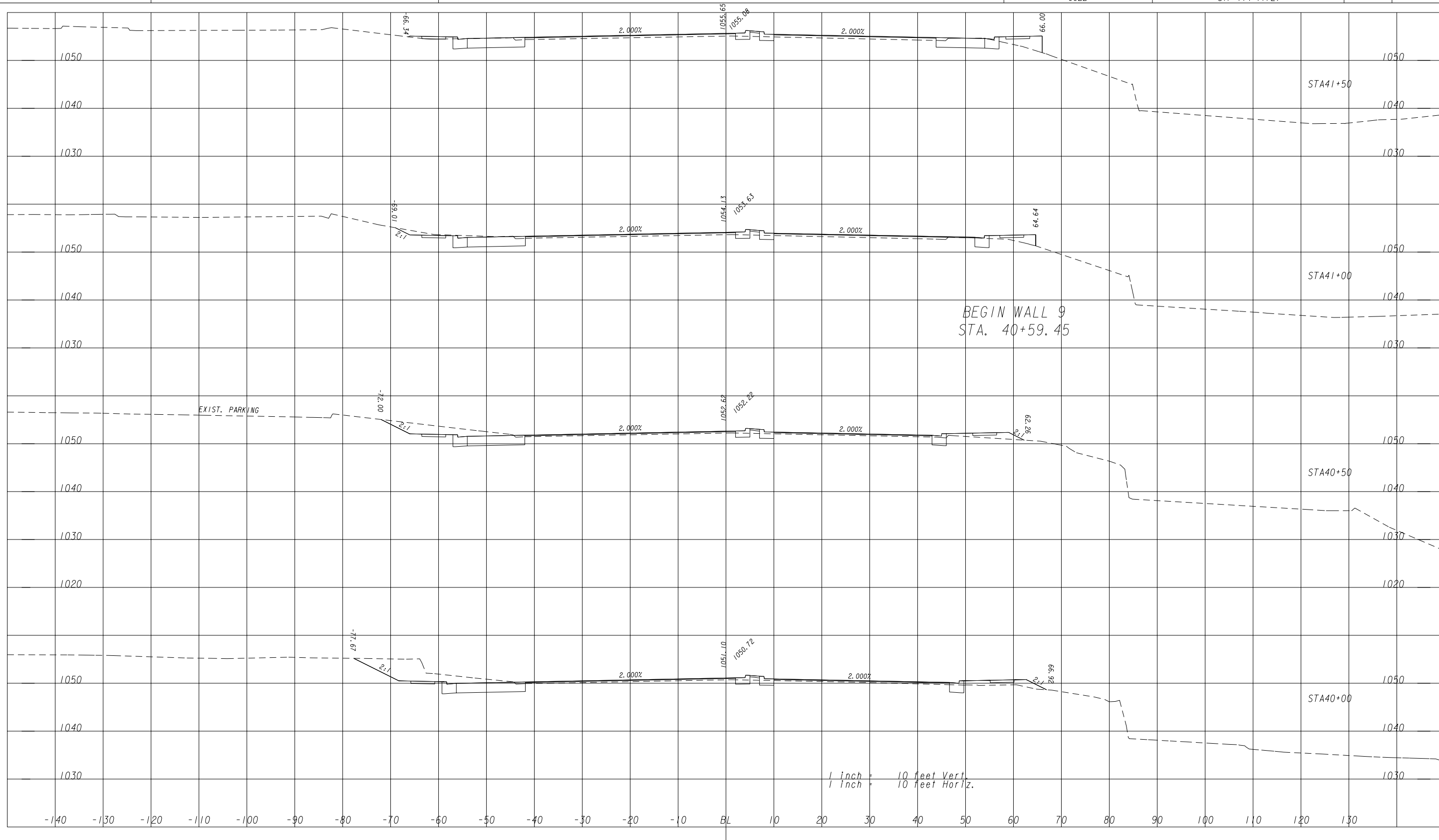
G:\SUE Training\AUP1 Sample Plans\721310XS01.dgn(ON+1-56, 58-63)
 G:\SUE Training\AUP1 Sample Plans\721310XS01.dgn(ON+1-56, 58-63)
 G:\SUE Training\AUP1 Sample Plans\721310XS01.dgn(ON+1-56, 58-63)
 G:\SUE Training\AUP1 Sample Plans\721310XS01.dgn(ON+1-56, 58-63)
 G:\SUE Training\AUP1 Sample Plans\721310XS01.dgn(ON+1-56, 58-63)



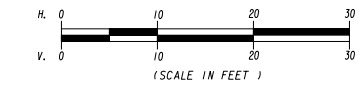
REVISION DATES	

STATE OF GEORGIA
 DEPARTMENT OF TRANSPORTATION
 OFFICE: URBAN DESIGN
 EARTHWORK CROSS SECTIONS
 SR 120/ROSWELL RD. WIDENING

DRAWING No.
23-15



G:\SUE\SUE Training\AUP\ Sample Plans\721310XS01.dgn(0N+1-56, 58-63)
 G:\SUE\SUE Training\AUP\ Sample Plans\721310XS01.dgn(0N+1-56, 58-63)
 G:\SUE\SUE Training\AUP\ Sample Plans\721310XS01.dgn(0N+1-56, 58-63)
 G:\SUE\SUE Training\AUP\ Sample Plans\721310XS01.dgn(0N+1-56, 58-63)
 G:\SUE\SUE Training\AUP\ Sample Plans\721310XS01.dgn(0N+1-56, 58-63)
 G:\SUE\SUE Training\AUP\ Sample Plans\721310XS01.dgn(0N+1-56, 58-63)
 G:\SUE\SUE Training\AUP\ Sample Plans\721310XS01.dgn(0N+1-56, 58-63)
 G:\SUE\SUE Training\AUP\ Sample Plans\721310XS01.dgn(0N+1-56, 58-63)
 G:\SUE\SUE Training\AUP\ Sample Plans\721310XS01.dgn(0N+1-56, 58-63)
 G:\SUE\SUE Training\AUP\ Sample Plans\721310XS01.dgn(0N+1-56, 58-63)

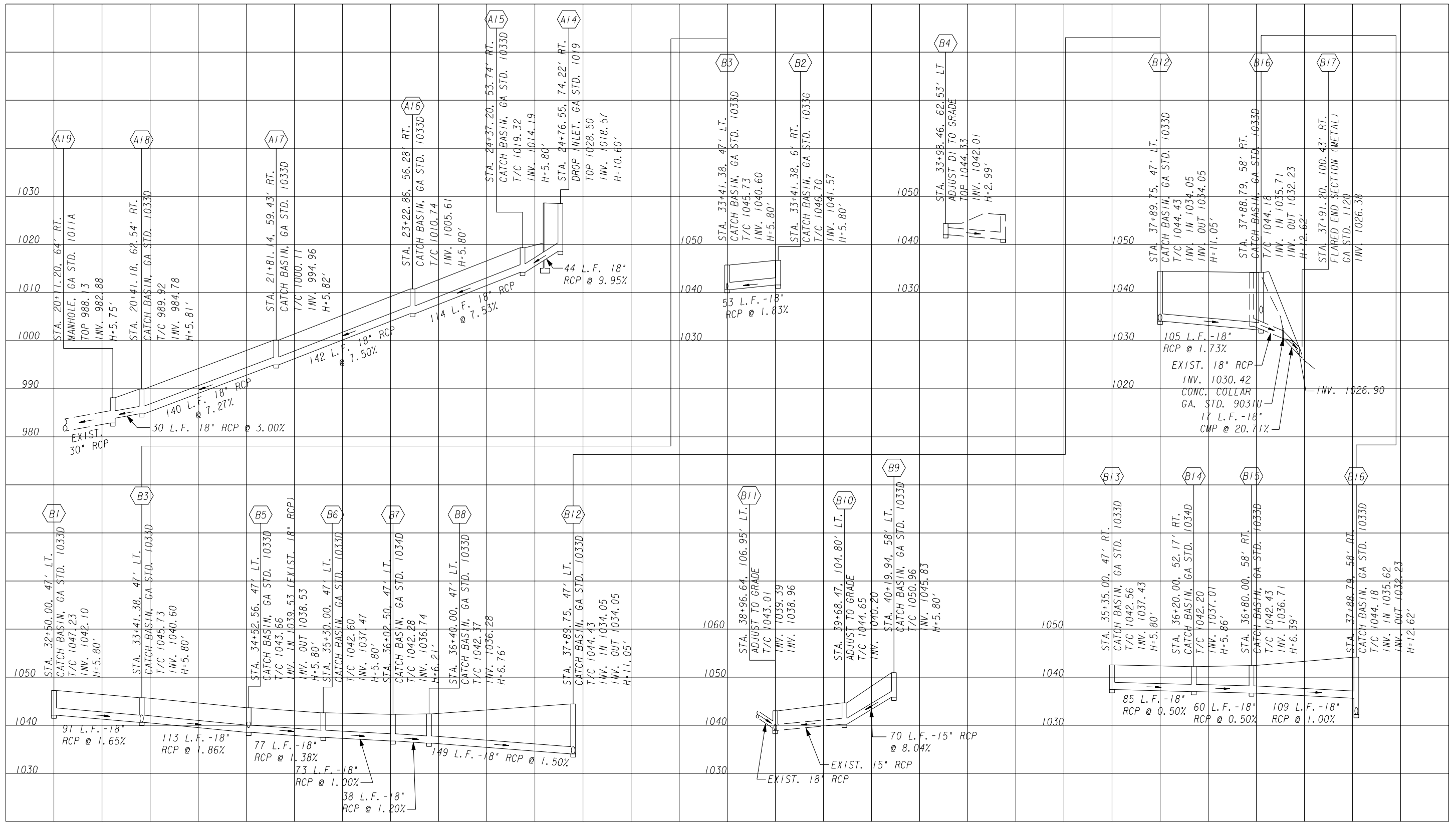


REVISION DATES	

STATE OF GEORGIA
 DEPARTMENT OF TRANSPORTATION
 OFFICE: URBAN DESIGN
 EARTHWORK CROSS SECTIONS

SR 120/ROSWELL RD. WIDENING

DRAWING No.
23-16



G:\SUE\SUE Training\AUP1 Sample Plans\721310DP01.dgn(0N+1-63)
 G:\SUE\SUE Training\AUP1 Sample Plans\721310DP01.dgn(0N+1-63)
 G:\SUE\SUE Training\AUP1 Sample Plans\721310DP01.dgn(0N+1-63)
 G:\SUE\SUE Training\AUP1 Sample Plans\721310DP01.dgn(0N+1-63)

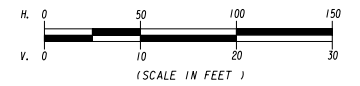
G:\SUE\SUE Training\AUP1 Sample Plans\721310DP01.dgn(0N+1-63)
 G:\SUE\SUE Training\AUP1 Sample Plans\721310DP01.dgn(0N+1-63)
 G:\SUE\SUE Training\AUP1 Sample Plans\721310DP01.dgn(0N+1-63)
 G:\SUE\SUE Training\AUP1 Sample Plans\721310DP01.dgn(0N+1-63)

REVISION DATES	

STATE OF GEORGIA
DEPARTMENT OF TRANSPORTATION
OFFICE: URBAN DESIGN
DRAINAGE PROFILES

SR 120/ROSWELL ROAD WIDENING

DRAWING No.
22-02



Utility Conflict Matrix



Project Owner: _____
 Project No.: _____
 Project Description: _____
 Highway or Route: _____

Utility Conflict Matrix Developed/Revised By: _____
 Reviewed By: _____

Date: _____
 Date: _____

Utility Owner and/ or Contact Name	Conflict ID	Drawing or Sheet No.	Utility Type	Size and/or Material	Utility Conflict Description	Start Station	End Station	Start Offset	End Offset	Utility Investigation Level Needed	Test Hole	Recommended Action or Resolution	Responsible Party	Estimated Resolution Date	Resolution Status	Cost Analysis
																Detail
																Detail
																Detail
																Detail
																Detail
																Detail
																Detail
																Detail
																Detail
																Detail
																Detail
																Detail
																Detail
																Detail
																Detail
																Detail
																Detail
																Detail
																Detail

Utility Owner and/ or Contact Name	Conflict ID	Drawing or Sheet No.	Utility Type	Size and/or Material	Utility Conflict Description	Start Station	End Station	Start Offset	End Offset	Utility Investigation Level Needed	Test Hole	Recommended Action or Resolution	Responsible Party	Estimated Resolution Date	Resolution Status	Cost Analysis	
																	Detail
																	Detail
																	Detail
																	Detail
																	Detail
																	Detail
																	Detail
																	Detail
																	Detail
																	Detail
																	Detail
																	Detail
																	Detail
																	Detail
																	Detail
																	Detail

Utility Conflict Resolution Alternatives

Cost Estimate Analysis



Date: _____

Project Owner: _____

Project No.: _____

Project Description: _____

Highway or Route: _____

Conflict ID:	
Utility Owner:	
Utility Type:	
Size and/or Material:	
Project Phase:	

Alternative Number	Alternative Description	Alternative Advantage	Alternative Disadvantage	Responsible Party	Engineering Cost (Utility)	Direct Cost (Utility)	Engineering Cost (DOT)	Direct Cost (DOT)	Total Cost	Feasibility	Decision
1					\$	\$	\$	\$	\$		
2					\$	\$	\$	\$	\$		
3					\$	\$	\$	\$	\$		
4					\$	\$	\$	\$	\$		