

UTILITY LINECODES

UTILITY SYMBOLS

EXISTING	TO BE REMOVED	PROPOSED	TYPE OF UTILITY
			ELECTRIC
			ELECTRIC/TELECOMMUNICATIONS
			ELECTRIC/CABLE TV
			ELECTRIC/TRAFFIC CONTROL
			ELECTRIC/TELECOMMUNICATIONS/CABLE TV
			ELECTRIC/TELECOMMUNICATIONS/CABLE TV/TRAFFIC CONTROL
			ELECTRIC/CABLE TV/TRAFFIC CONTROL
			ELECTRIC/TELECOMMUNICATIONS/TRAFFIC CONTROL
			GUY WIRE
			TELECOMMUNICATIONS
			TELECOMMUNICATIONS/TRAFFIC CONTROL
			TELECOMMUNICATIONS/CABLE TV/TRAFFIC CONTROL
			CABLE TV
			CABLE TV/TRAFFIC CONTROL
			TRAFFIC CONTROL
			ELECTRIC (QL-D)
			ELECTRIC (QL-C)
			ELECTRIC (QL-B)
			TELECOMMUNICATIONS (QL-D)
			TELECOMMUNICATIONS (QL-C)
			TELECOMMUNICATIONS (QL-B)
			CABLE TV (QL-D)
			CABLE TV (QL-C)
			CABLE TV (QL-B)
			WATER (QL-D)
			WATER (QL-C)
			WATER (QL-B)
			WATER FOR LABELED PIPE SIZES (QL-D)
			WATER FOR LABELED PIPE SIZES (QL-C)
			WATER FOR LABELED PIPE SIZES (QL-B)
			NON-POTABLE WATER (QL-D)
			NON-POTABLE WATER (QL-C)
			NON-POTABLE WATER (QL-B)
			NON-POTABLE WATER FOR LABELED PIPE SIZES (QL-D)
			NON-POTABLE WATER FOR LABELED PIPE SIZES (QL-C)
			NON-POTABLE WATER FOR LABELED PIPE SIZES (QL-B)
			STEAM (QL-D)
			STEAM (QL-C)
			STEAM (QL-B)
			STEAM FOR LABELED PIPE SIZES (QL-D)
			STEAM FOR LABELED PIPE SIZES (QL-C)
			STEAM FOR LABELED PIPE SIZES (QL-B)
			SANITARY SEWER WITH FLOW DIRECTION (QL-D)
			SANITARY SEWER WITH FLOW DIRECTION (QL-C)
			SANITARY SEWER WITH FLOW DIRECTION (QL-B)
			SANITARY SEWER WITH FLOW DIRECTION FOR LABELED PIPE SIZES (QL-D)
			SANITARY SEWER WITH FLOW DIRECTION FOR LABELED PIPE SIZES (QL-C)
			SANITARY SEWER WITH FLOW DIRECTION FOR LABELED PIPE SIZES (QL-B)
			SANITARY SEWER FORCE MAIN WITH FLOW DIRECTION (QL-D)
			SANITARY SEWER FORCE MAIN WITH FLOW DIRECTION (QL-C)
			SANITARY SEWER FORCE MAIN WITH FLOW DIRECTION (QL-B)
			GAS (QL-D)
			GAS (QL-C)
			GAS (QL-B)
			GAS FOR LABELED PIPE SIZES (QL-D)
			GAS FOR LABELED PIPE SIZES (QL-C)
			GAS FOR LABELED PIPE SIZES (QL-B)
			PETROLEUM (QL-D)
			PETROLEUM (QL-C)
			PETROLEUM (QL-B)
			PETROLEUM FOR LABELED PIPE SIZES (QL-D)
			PETROLEUM FOR LABELED PIPE SIZES (QL-C)
			PETROLEUM FOR LABELED PIPE SIZES (QL-B)
			TRAFFIC CONTROL (QL-D)
			TRAFFIC CONTROL (QL-C)
			TRAFFIC CONTROL (QL-B)
			UNKNOWN UTILITY FOUND IN SUE INVESTIGATION (QL-B)

EXISTING	PROPOSED	TEMPORARY	
			UTILITY POLE/GUY POLE
			LIGHT POLE
			GUY ANCHOR
			MARKER
			SPLICE BOX
			CABINET
			VENT
			ELECTRIC MANHOLE
			HAND HOLE
			TRANSFORMER
			ELECTRIC METER
			ELECTRIC BOX
			TELECOMMUNICATIONS MANHOLE
			TELECOMMUNICATIONS PEDESTAL
			SUBSCRIBER LOOP CARRIER (aka 'SLICK')
			PHONE BOOTH
			CABLE TV PEDESTAL
			CABLE TV MANHOLE
			WATER VALVE
			WATER METER
			WATER MANHOLE
			FIRE HYDRANT ASSEMBLY (INCLUDES ASSOCIATED VALVE)
			BACKFLOW PREVENTER
			PRESSURE INDICATOR VALVE
			AIR RELEASE VALVE
			WELL
			WATER VAULT
			WATER VALVE MARKER
			STAND PIPE

EXISTING	PROPOSED	TEMPORARY	
			CLEANOUT
			SANITARY SEWER MANHOLE
			AIR RELEASE VALVE
			GREASE TRAP
			SANITARY SEWER FORCE MAIN VALVE
			GAS VALVE
			GAS METER
			GAS MANHOLE
			GAS PRESSURE REGULATOR
			GAS VAULT
			GAS TEST STATION
			PETROLEUM VALVE

FOR PROPOSED/TEMPORARY TRAFFIC CONTROL INFORMATION REFER TO TRAFFIC SIGNAL PLANS

TRAFFIC CONTROL MANHOLE/ELECTRIC COMMUNICATIONS BOX  
 TRAFFIC CONTROL PEDESTAL SIGNAL/BUTTON POST

MISCELLANEOUS

	LIMITS OF OVERHEAD AND SUBSURFACE UTILITY INVESTIGATION
	TEST HOLE (QL-A ONLY)
	END OF INFORMATION
	QUALITY LEVEL (QL) DELINEATION
	POLE ID
	SANITARY SEWER MANHOLE (SSMH) ID
	CONFLICT LOCATION (UTILITY IMPACT ANALYSIS (UIA) ONLY)

**QUALITY LEVELS AND DEFINITIONS**

QL-D DEPICTED ACCORDING TO UTILITY RECORD INFORMATION AND IN-FIELD VISUAL INSPECTION. NO ELECTRONIC DESIGNATING INFORMATION WAS OBTAINED.

QL-C EXISTING UTILITY STRUCTURES HAVE BEEN FIELD LOCATED AND SURVEYED TO ASSIST IN DEPICTING THE UTILITIES SHOWN ON RECORDS. NO ELECTRONIC DESIGNATING INFORMATION WAS OBTAINED.

QL-B INFORMATION WAS OBTAINED THROUGH THE APPLICATION OF APPROPRIATE SURFACE GEOPHYSICAL METHODS TO DETERMINE THE EXISTENCE AND APPROPRIATE HORIZONTAL POSITION OF THE SUBSURFACE UTILITIES. QL-B DATA SHOULD BE REPRODUCIBLE BY SURFACE GEOPHYSICS AT ANY POINT OF THEIR DEPICTION. THIS INFORMATION IS SURVEYED TO APPLICABLE TOLERANCES DEFINED BY THE PROJECT AND REDUCED ONTO PLAN DOCUMENTS.

QL-A OBTAIN PRECISE HORIZONTAL AND VERTICAL POSITION OF THE UTILITY LINE BY EXCAVATING A TEST HOLE. THE TEST HOLE SHALL BE DONE USING VACUUM EXCAVATION OR COMPARABLE NONDESTRUCTIVE EQUIPMENT IN A MANNER AS TO CAUSE NO DAMAGE TO THE UTILITY LINE. AFTER EXCAVATING A TEST HOLE, A FIELD SURVEY SHALL BE PERFORMED TO DETERMINE THE EXACT LOCATION AND POSITION OF THE UTILITY LINE.

**TELEPHONE PAIR SIZE TABLE**

TELEPHONE PAIR SIZE	TELEPHONE CABLE DIAMETER
5 - 100	0.50 TO 2.00 IN
101 - 2400	UP TO 3.50 IN

NOT TO SCALE

REVISION DATES

NO.	DATE	DESCRIPTION

STATE OF GEORGIA  
 DEPARTMENT OF TRANSPORTATION  
 OFFICE: UTILITIES

UTILITY PLANS  
 LEGEND

SR 120/ROSWELL RD. WIDENING

DRAWING No. 24-0B

UTILITY POLE DATA SHEET

Table with columns: Description, TBE Job #, Pole #, Pole ID, Pole Owner, Electric, Telecom, Cable TV, Traffic, Other, Northing, Easting, Height, Dia., Material, Misc. Rows include data for poles 1 through 41.

UTILITY POLE DATA SHEET

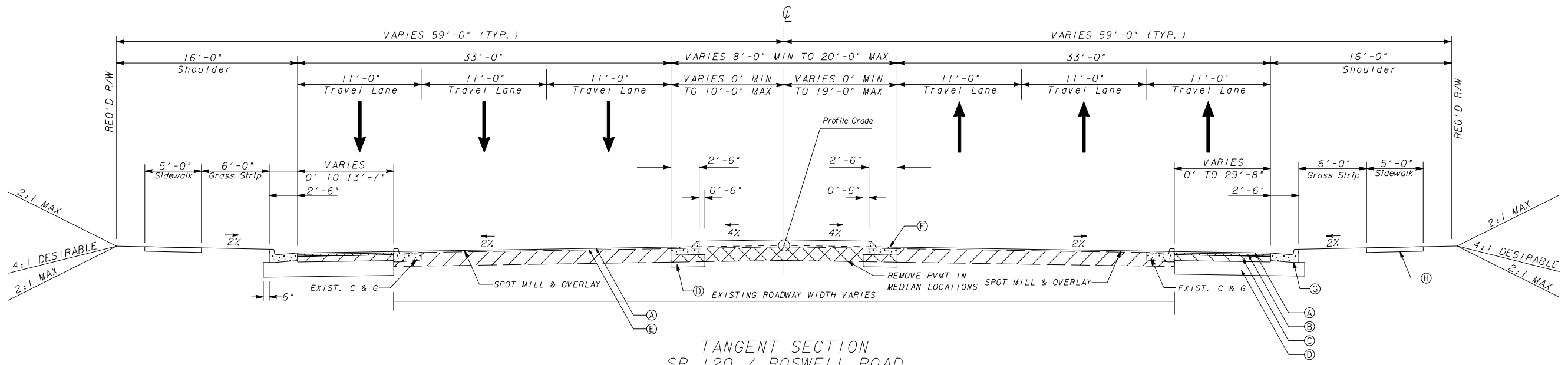
Table with columns: Description, TBE Job #, Pole #, Pole ID, Pole Owner, Electric, Telecom, Cable TV, Traffic, Other, Northing, Easting, Height, Dia., Material, Misc. Rows include data for poles 42 through 92A.

REVISION DATES

STATE OF GEORGIA
DEPARTMENT OF TRANSPORTATION
OFFICE: UTILITIES
UTILITY PLANS
UTILITY POLE DATA
SR 120/ROSWELL RD. WIDENING

DRAWING No. 24-0C

NOT TO SCALE

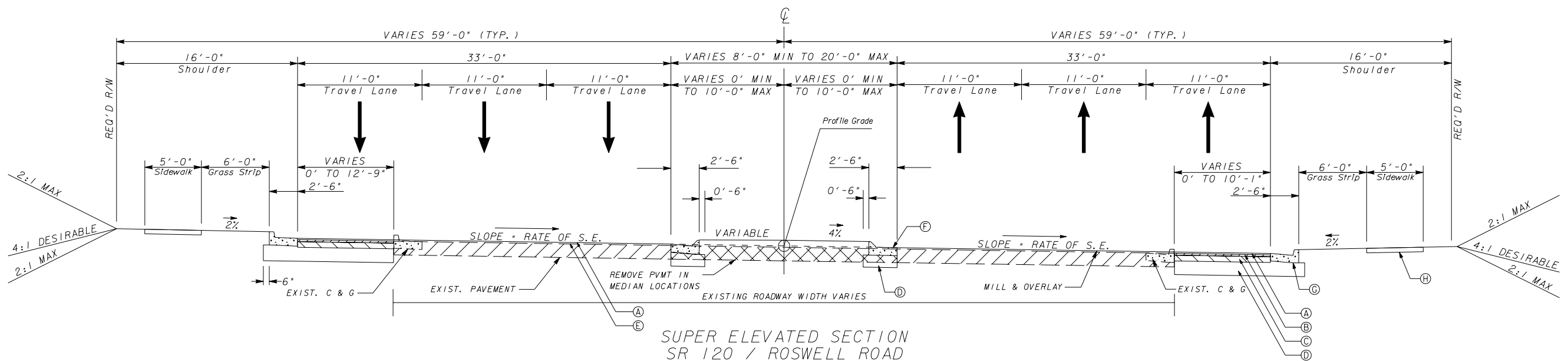


TANGENT SECTION  
SR 120 / ROSWELL ROAD

STA. 14+95.93 TO 24+67.00  
STA. 35+89.00 TO 62+90.00  
STA. 86+88.96 TO 90+50.00

SLOPE CONTROLS		
SLOPE	CUT	FILL
4:1	0-10'	0-10'
3:1	--	--
2:1	OVER 10'	OVER 10'

PAVEMENT MATERIAL SCHEDULE	
(A)	RECYCLED ASPH. CONC. 12.5 mm SMA, GP 2 ONLY, 165 LBS./SY, DESIGN MIX LEVEL D
(B)	RECYCLED ASPH. CONC. 19 mm SUPERPAVE, GP 10R GP2, 330 LBS./SY, DESIGN MIX LEVEL D
(C)	RECYCLED ASPH. CONC. 25 mm SUPERPAVE, GP10R GP2, 880 LBS./SY, DESIGN MIX LEVEL C
(D)	GRADED AGGREGATE BASE COURSE, 12"
(E)	ASPHALTIC CONCRETE LEVELING, AS REQUIRED
(F)	CONCRETE CURB & GUTTER, 8" X 30", TYPE 7, GA STD. 9032 B
(G)	CONCRETE CURB & GUTTER, 8" X 30", TYPE 2, GA STD. 9032 B
(H)	5' CONCRETE SIDEWALK, 4 INCH THICK



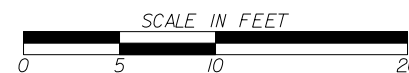
SUPER ELEVATED SECTION  
SR 120 / ROSWELL ROAD

STA. 24+67.00 TO 35+89.00  
STA. 62+90.00 TO 66+29.91

NOTE: SEE DRAWING NO. 5-07 FOR STD. DETAILS

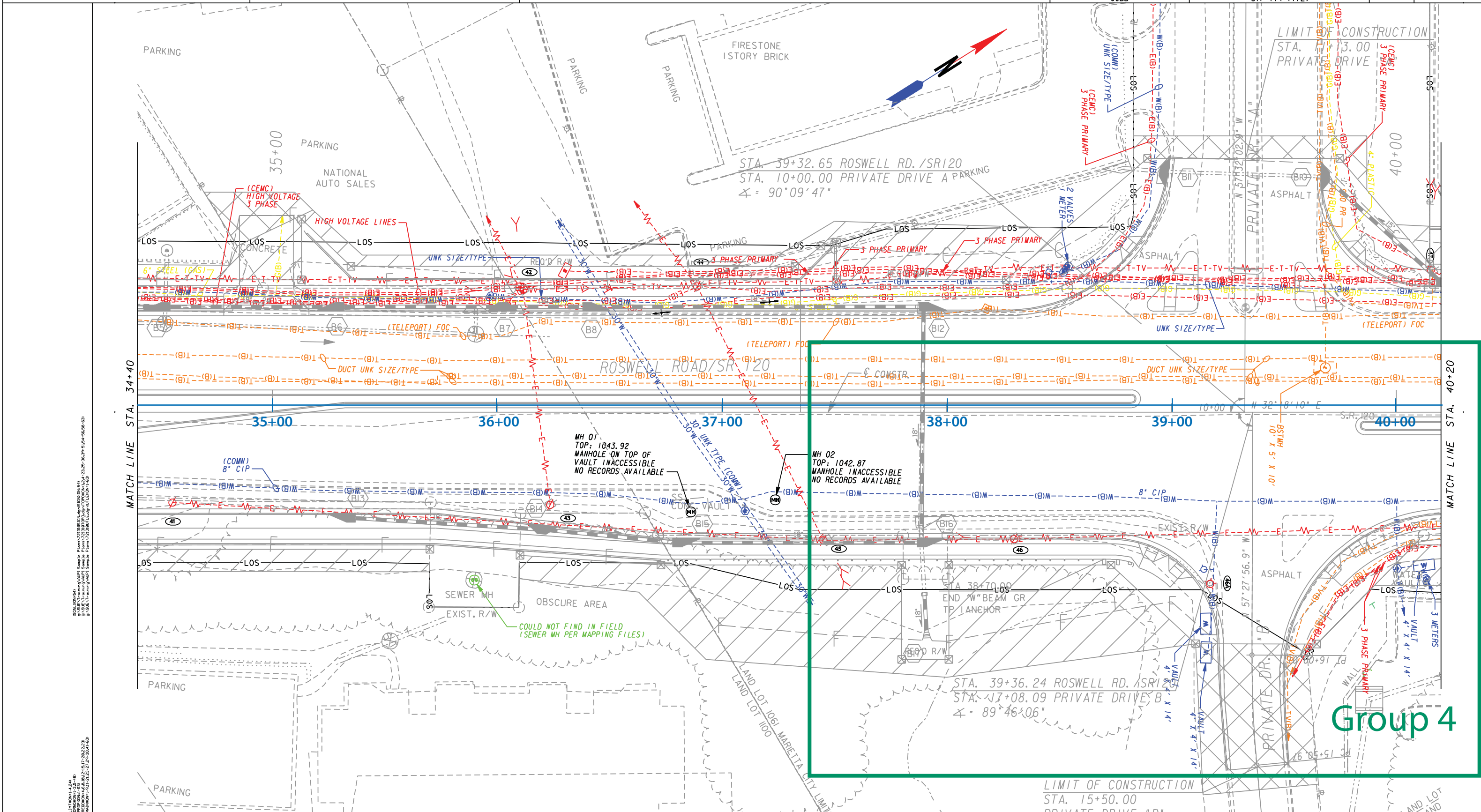
REVISION DATES

STATE OF GEORGIA  
DEPARTMENT OF TRANSPORTATION  
OFFICE: URBAN DESIGN  
TYPICAL SECTIONS



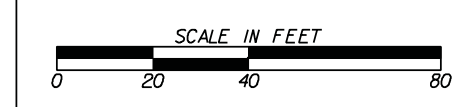
SR 120/ROSWELL RD. WIDENING

DRAWING No.  
5-01

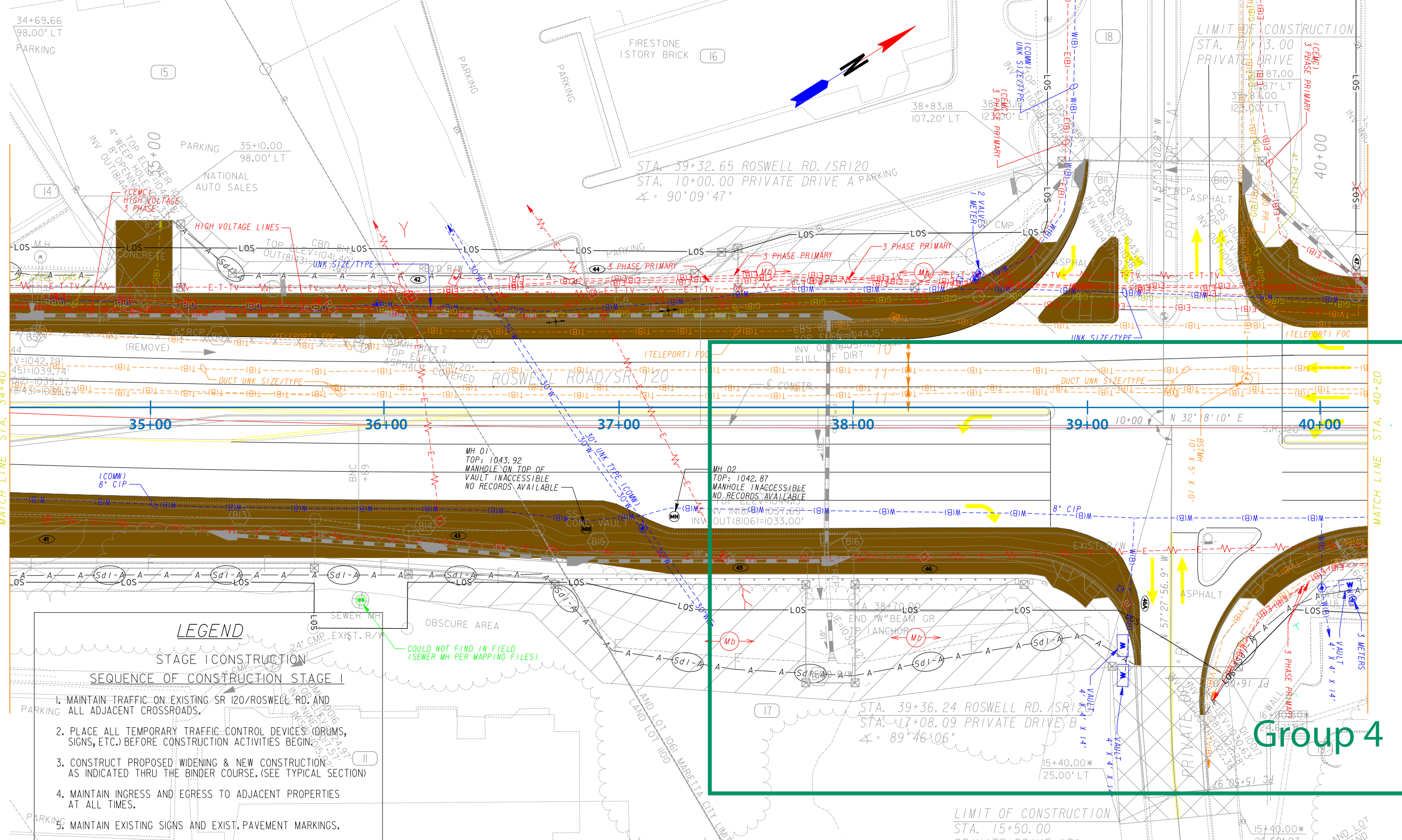


PROPERTY AND EXISTING R/W LINE	---
REQUIRED R/W LINE	---
CONSTRUCTION LIMITS	---
EASEMENT FOR CONSTR & MAINTENANCE OF SLOPES	▨
EASEMENT FOR CONSTR OF SLOPES	▩
EASEMENT FOR CONSTR OF DRIVES	▧

BEGIN LIMIT OF ACCESS.....	BLA
END LIMIT OF ACCESS.....	ELA
LIMIT OF ACCESS	---
R/W AND LIMIT OF ACCESS	---
EXISTING R/W LINE	---



REVISION DATES		STATE OF GEORGIA DEPARTMENT OF TRANSPORTATION OFFICE: UTILITIES UTILITY PLANS
SR 120/ROSWELL RD. WIDENING STA. 34+00 - STA. 40+20		DRAWING No. <b>24-05</b>



**LEGEND**

**STAGE I CONSTRUCTION SEQUENCE OF CONSTRUCTION STAGE I**

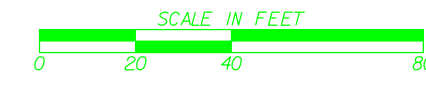
1. MAINTAIN TRAFFIC ON EXISTING SR 120/ROSWELL RD. AND ALL ADJACENT CROSSROADS.
2. PLACE ALL TEMPORARY TRAFFIC CONTROL DEVICES (DRUMS, SIGNS, ETC.) BEFORE CONSTRUCTION ACTIVITIES BEGIN.
3. CONSTRUCT PROPOSED WIDENING & NEW CONSTRUCTION AS INDICATED THRU THE BINDER COURSE. (SEE TYPICAL SECTION)
4. MAINTAIN INGRESS AND EGRESS TO ADJACENT PROPERTIES AT ALL TIMES.
5. MAINTAIN EXISTING SIGNS AND EXIST. PAVEMENT MARKINGS.

COULD NOT FIND IN FIELD (SEWER MH PER MAPPING FILES)

**Group 4**

PROPERTY AND EXISTING R/W LINE	---
REQUIRED R/W LINE	---
CONSTRUCTION LIMITS	---C---F---
EASEMENT FOR CONSTR & MAINTENANCE OF SLOPES	[Hatched Box]
EASEMENT FOR CONSTR OF SLOPES	[Hatched Box]
EASEMENT FOR CONSTR OF DRIVES	[Hatched Box]

BEGIN LIMIT OF ACCESS.....	BLA
END LIMIT OF ACCESS.....	ELA
LIMIT OF ACCESS	---
R/W AND LIMIT OF ACCESS	---
EXISTING R/W LINE	---

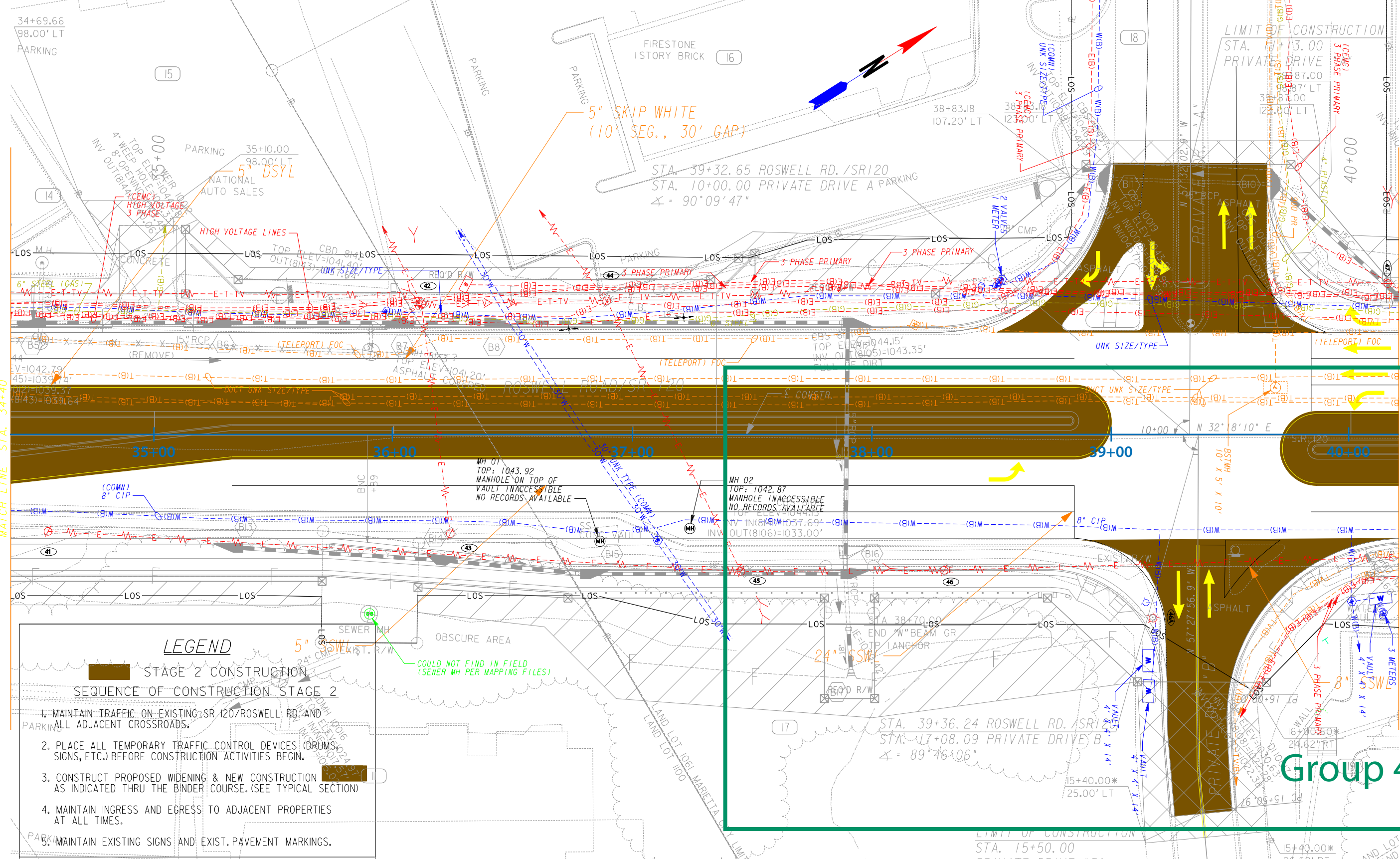


REVISION DATES

STATE OF GEORGIA  
DEPARTMENT OF TRANSPORTATION  
OFFICE: URBAN DESIGN

**MAINLINE PLAN**  
STAGE I CONSTRUCTION  
SR 120/ROSWELL RD. WIDENING  
STA. 34+40 - STA. 40+20

DRAWING No. **13-05**



**LEGEND**

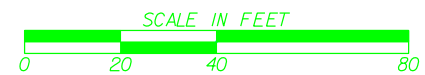
- STAGE 2 CONSTRUCTION SEQUENCE OF CONSTRUCTION STAGE 2**
1. MAINTAIN TRAFFIC ON EXISTING SR 120/ROSWELL RD. AND ALL ADJACENT CROSSROADS.
  2. PLACE ALL TEMPORARY TRAFFIC CONTROL DEVICES (DRUMS, SIGNS, ETC.) BEFORE CONSTRUCTION ACTIVITIES BEGIN.
  3. CONSTRUCT PROPOSED WIDENING & NEW CONSTRUCTION AS INDICATED THRU THE BINDER COURSE. (SEE TYPICAL SECTION)
  4. MAINTAIN INGRESS AND EGRESS TO ADJACENT PROPERTIES AT ALL TIMES.
  5. MAINTAIN EXISTING SIGNS AND EXIST. PAVEMENT MARKINGS.

BEGIN LIMIT OF ACCESS.....BLA  
 END LIMIT OF ACCESS.....ELA  
 LIMIT OF ACCESS  
 R/W AND LIMIT OF ACCESS  
 EXISTING R/W LINE

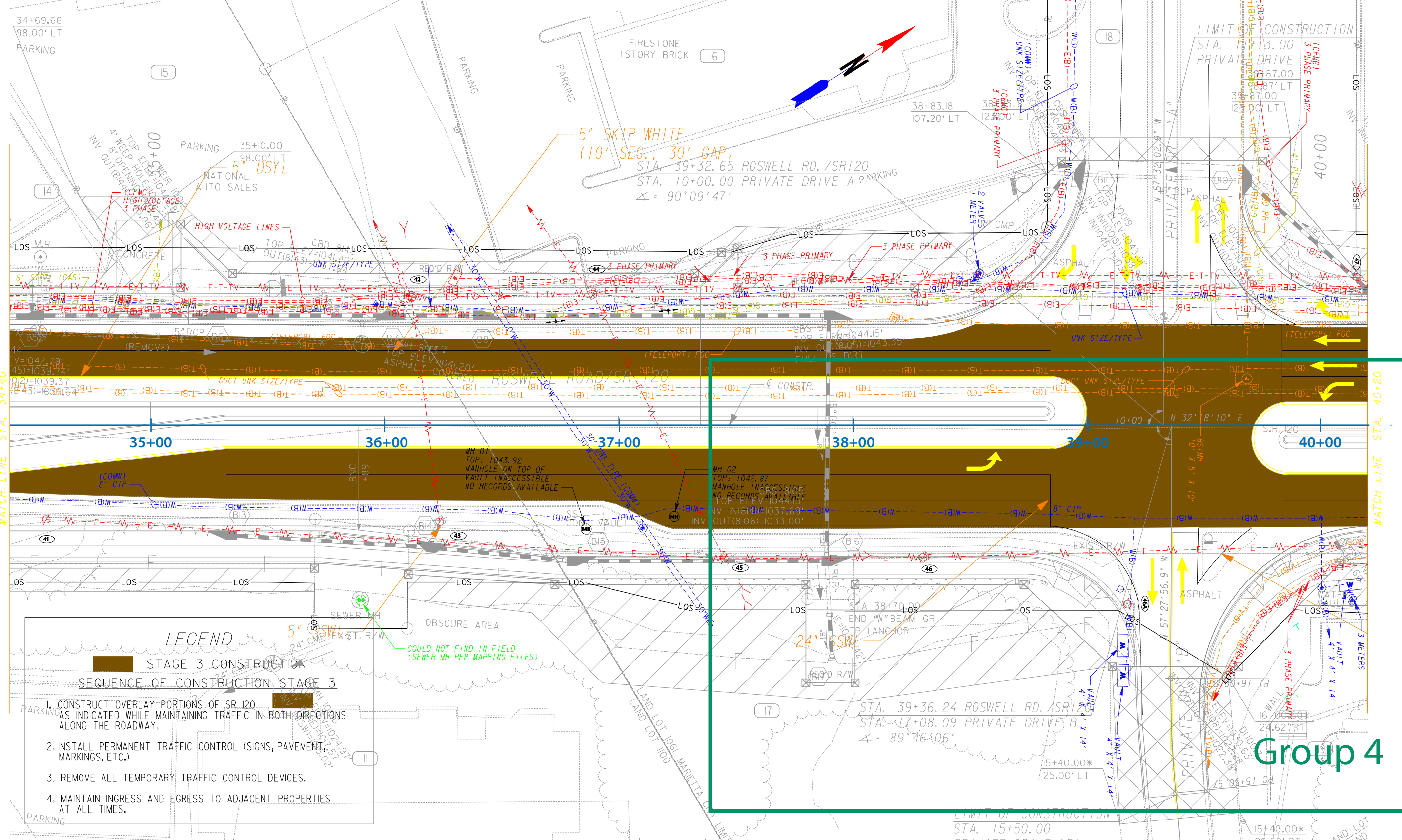
**REVISION DATES**

NO.	DATE	DESCRIPTION

STATE OF GEORGIA  
 DEPARTMENT OF TRANSPORTATION  
 OFFICE: URBAN DESIGN  
**MAINLINE PLAN**  
 STAGE 2 CONSTRUCTION  
 SR 120/ROSWELL RD. WIDENING  
 STA. 34+40 - STA. 40+20



**Group 4**

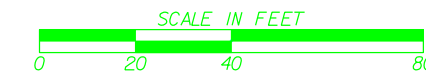


**LEGEND**

**SEQUENCE OF CONSTRUCTION STAGE 3**

1. CONSTRUCT OVERLAY PORTIONS OF SR 120 AS INDICATED WHILE MAINTAINING TRAFFIC IN BOTH DIRECTIONS ALONG THE ROADWAY.
2. INSTALL PERMANENT TRAFFIC CONTROL (SIGNS, PAVEMENT, MARKINGS, ETC.)
3. REMOVE ALL TEMPORARY TRAFFIC CONTROL DEVICES.
4. MAINTAIN INGRESS AND EGRESS TO ADJACENT PROPERTIES AT ALL TIMES.

PROPERTY AND EXISTING R/W LINE	---	BEGIN LIMIT OF ACCESS.....	BLA
REQUIRED R/W LINE	---	END LIMIT OF ACCESS.....	ELA
CONSTRUCTION LIMITS	---	LIMIT OF ACCESS	---
EASEMENT FOR CONSTR & MAINTENANCE OF SLOPES	---	R/W AND LIMIT OF ACCESS	---
EASEMENT FOR CONSTR OF SLOPES	---	EXISTING R/W LINE	---
EASEMENT FOR CONSTR OF DRIVES	---		

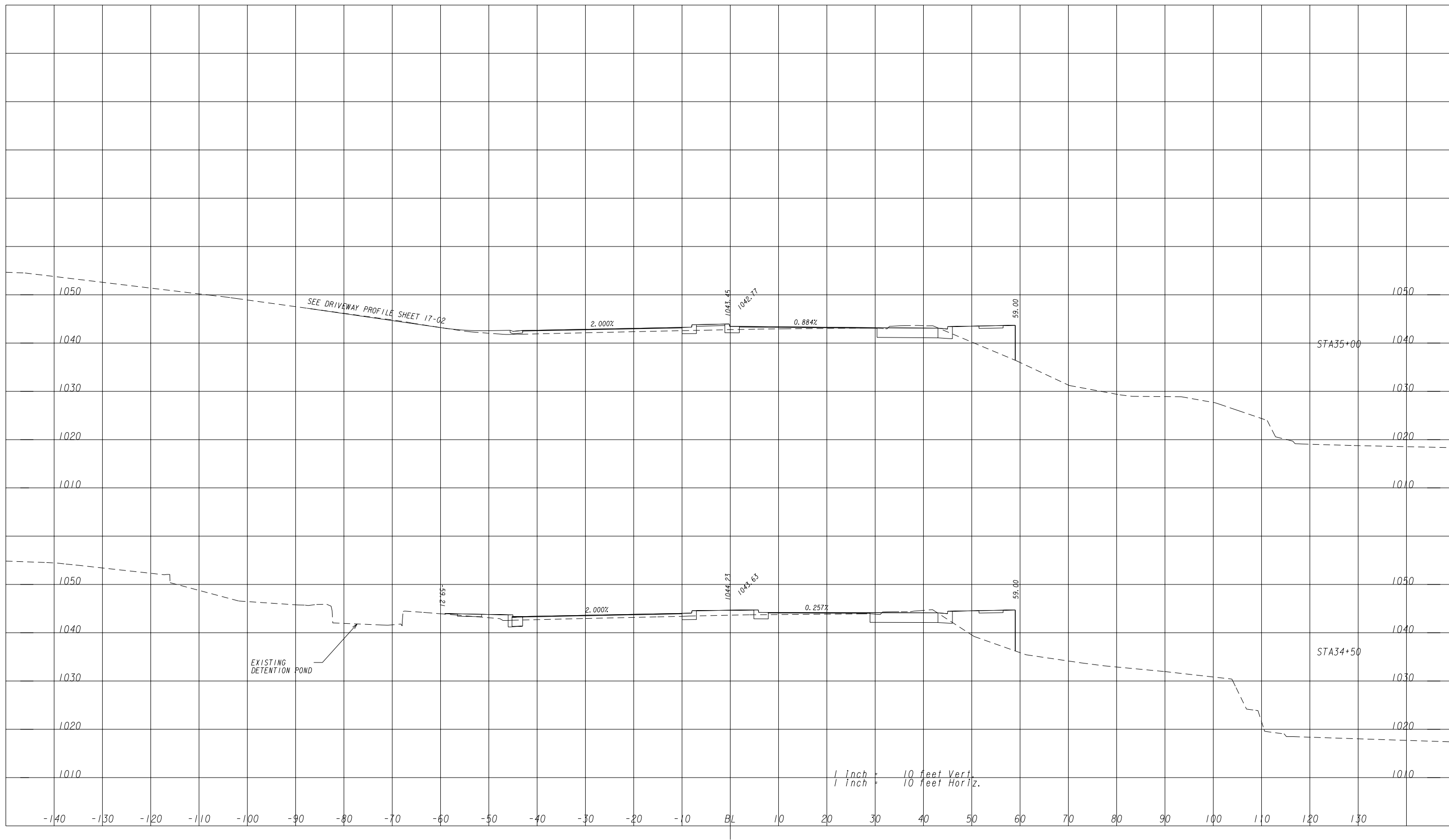


REVISION DATES

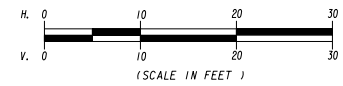
STATE OF GEORGIA  
 DEPARTMENT OF TRANSPORTATION  
 OFFICE: URBAN DESIGN

**MAINLINE PLAN**  
 STAGE 3 CONSTRUCTION  
 SR 120/ROSWELL RD. WIDENING  
 STA. 34+40 - STA. 40+20

DRAWING No. **13-05**



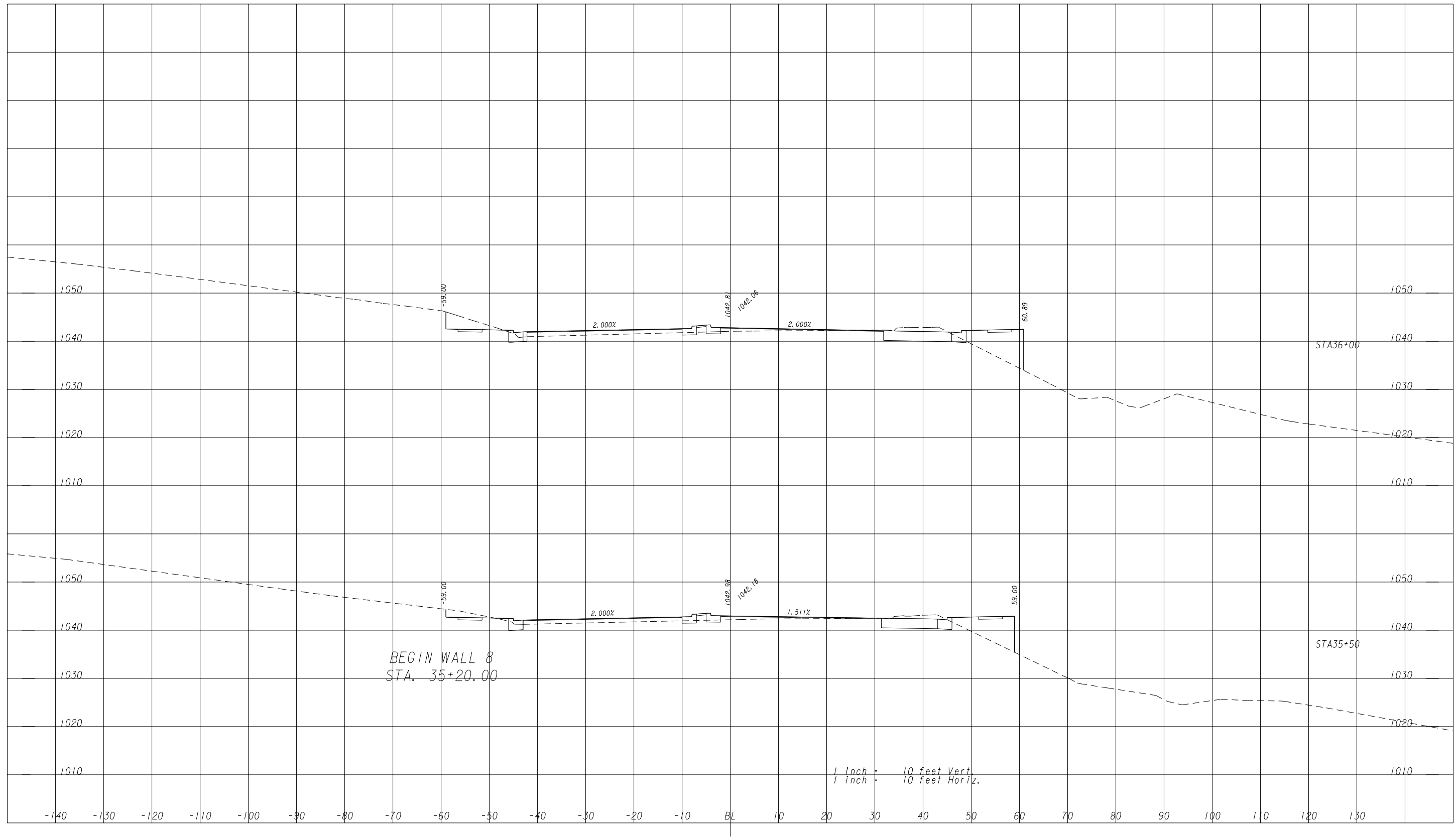
G:\SUE\SUE Training\AUP\ Sample Plans\721310XS01.dgn(0N+1-56, 58-63)  
 G:\SUE\SUE Training\AUP\ Sample Plans\721310XS01.dgn(0N+1-56, 58-63)  
 G:\SUE\SUE Training\AUP\ Sample Plans\721310XS01.dgn(0N+1-56, 58-63)  
 G:\SUE\SUE Training\AUP\ Sample Plans\721310XS01.dgn(0N+1-56, 58-63)  
 G:\SUE\SUE Training\AUP\ Sample Plans\721310XS01.dgn(0N+1-56, 58-63)



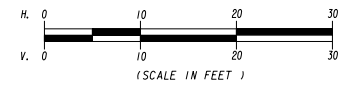
REVISION DATES		

STATE OF GEORGIA  
DEPARTMENT OF TRANSPORTATION  
OFFICE: URBAN DESIGN  
EARTHWORK CROSS SECTIONS  
SR 120/ROSWELL RD. WIDENING  
DRAWING No. 23-12





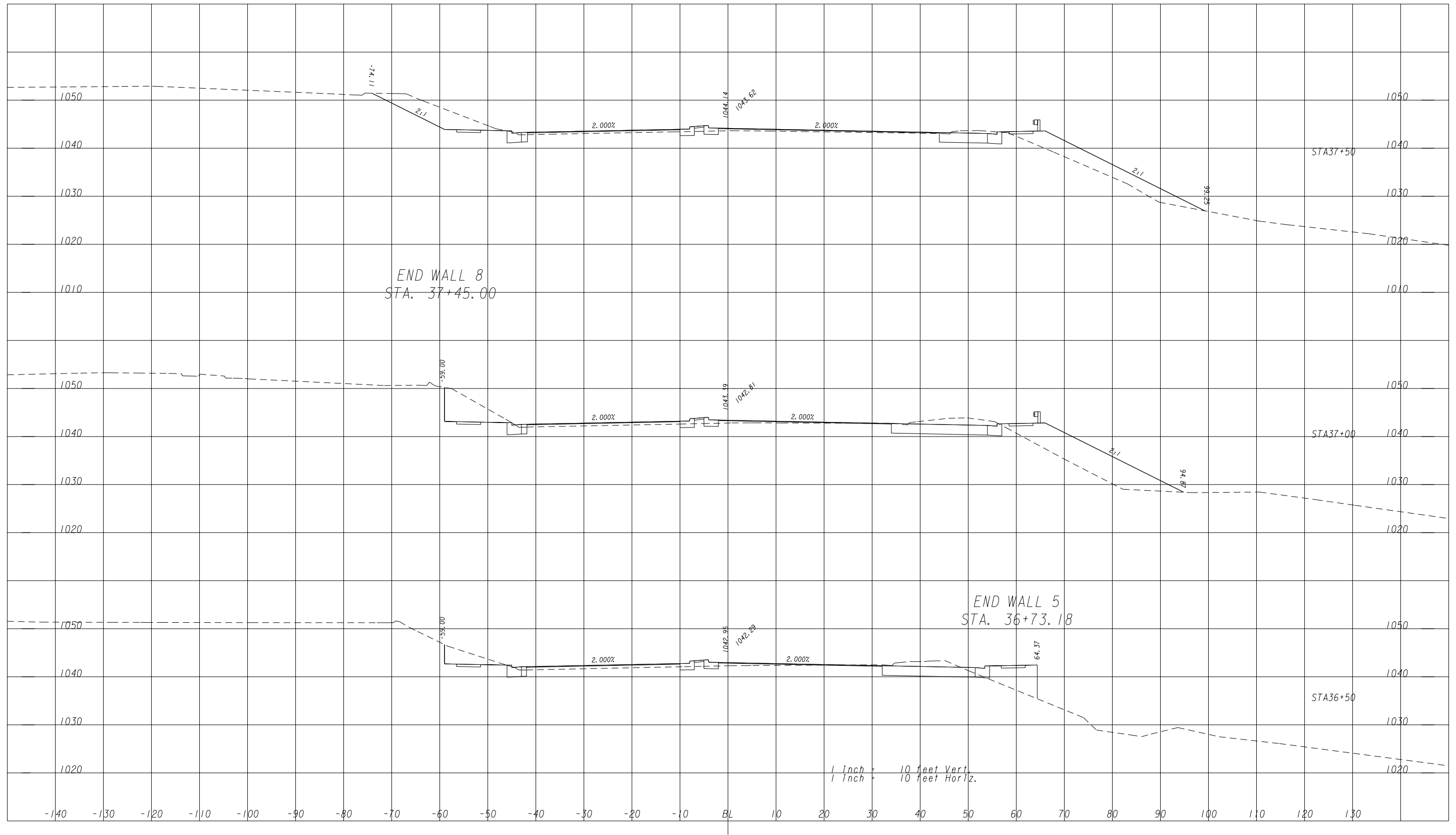
G:\SUE\SUE Training\AUP\ Sample Plans\721310XS01.dgn(0N+1-56, 58-63)  
 G:\SUE\SUE Training\AUP\ Sample Plans\721310XS01.dgn(0N+1-56, 58-63)  
 G:\SUE\SUE Training\AUP\ Sample Plans\721310XS01.dgn(0N+1-56, 58-63)  
 G:\SUE\SUE Training\AUP\ Sample Plans\721310XS01.dgn(0N+1-56, 58-63)  
 G:\SUE\SUE Training\AUP\ Sample Plans\721310XS01.dgn(0N+1-56, 58-63)



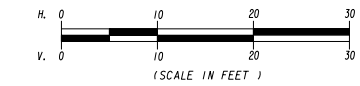
REVISION DATES		

STATE OF GEORGIA  
 DEPARTMENT OF TRANSPORTATION  
 OFFICE: URBAN DESIGN  
 EARTHWORK CROSS SECTIONS  
 SR 120/ROSWELL RD. WIDENING

DRAWING No.  
**23-13**



G:\SUE\SUE Training\AUP\ Sample Plans\721310XS01.dgn(0N+1-56, 58-63)  
 G:\SUE\SUE Training\AUP\ Sample Plans\721310XS01.dgn(0N+1-56, 58-63)  
 G:\SUE\SUE Training\AUP\ Sample Plans\721310XS01.dgn(0N+1-56, 58-63)  
 G:\SUE\SUE Training\AUP\ Sample Plans\721310XS01.dgn(0N+1-56, 58-63)  
 G:\SUE\SUE Training\AUP\ Sample Plans\721310XS01.dgn(0N+1-56, 58-63)



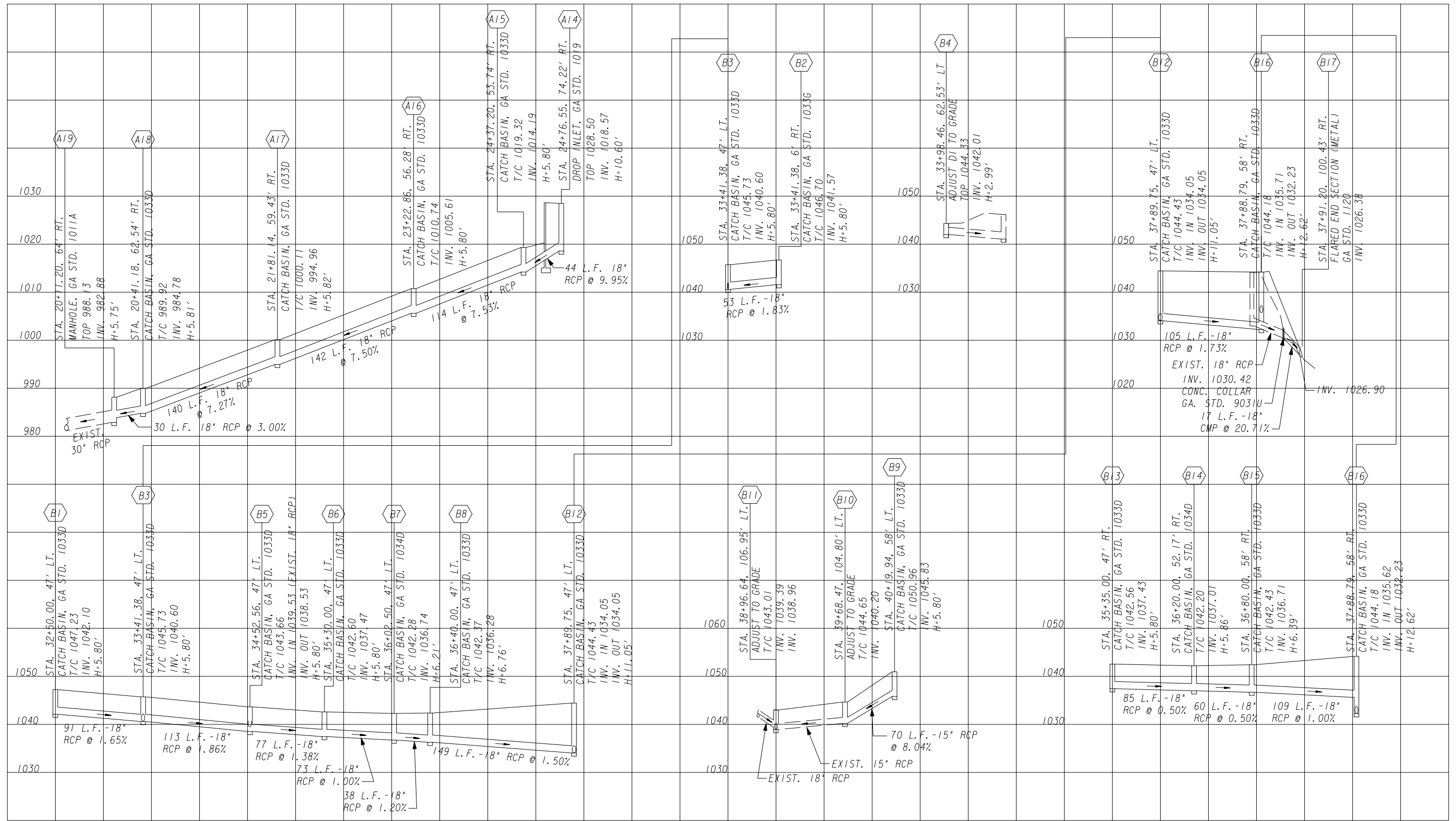
REVISION DATES	

STATE OF GEORGIA  
 DEPARTMENT OF TRANSPORTATION  
 OFFICE: URBAN DESIGN  
 EARTHWORK CROSS SECTIONS  
 SR 120/ROSWELL RD. WIDENING

DRAWING No.  
**23-14**





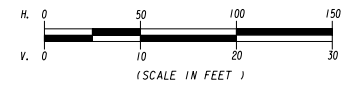


G:\SUE\SUE Training\AUP1 Sample Plans\721310DP01.dgn(0N+1-63)  
 G:\SUE\SUE Training\AUP1 Sample Plans\721310DP01.dgn(0N+1-63)  
 G:\SUE\SUE Training\AUP1 Sample Plans\721310DP01.dgn(0N+1-63)  
 G:\SUE\SUE Training\AUP1 Sample Plans\721310DP01.dgn(0N+1-63)

G:\SUE\SUE Training\AUP1 Sample Plans\721310DP01.dgn(0N+1-63)  
 G:\SUE\SUE Training\AUP1 Sample Plans\721310DP01.dgn(0N+1-63)  
 G:\SUE\SUE Training\AUP1 Sample Plans\721310DP01.dgn(0N+1-63)  
 G:\SUE\SUE Training\AUP1 Sample Plans\721310DP01.dgn(0N+1-63)

REVISION DATES


STATE OF GEORGIA  
 DEPARTMENT OF TRANSPORTATION  
 OFFICE: URBAN DESIGN  
 DRAINAGE PROFILES



SR 120/ROSWELL ROAD WIDENING

DRAWING No.  
**22-02**