

How do I Use the TRT?

From the TRT site, you can view related records with your term in the TRIS databases:

- TRID: The TRIS and ITRD Database (trid.trb.org)
- Research in Progress (rip.trb.org)
- TRB Publications Index (pubsindex.trb.org)

You can also search for records containing specific TRT terms directly at the database websites. From the Advanced Search (in RIP, PubsIndex) or Additional Filters (in TRID) page, click on the "Index Term" field. Begin typing an index term. If the term is from the Transportation Research Thesaurus (TRT), matching terms will appear in a drop down list from which you can select terms.

Questions? Suggestions?

Terms are added to the TRT regularly to meet the needs of transportation researchers.

If you have a suggestion for a term that should be in the TRT, you may submit it for consideration at <http://trt.trb.org/newterms.asp>

For help or more information:

Janet Daly
Indexing Manager
tris-trb@nas.edu

January 2019

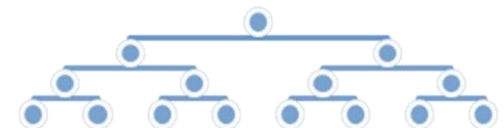
The National Academies of
SCIENCES • ENGINEERING • MEDICINE

The nation turns to the National Academies of Sciences, Engineering, and Medicine for independent, objective advice on issues that affect people's lives worldwide.

www.national-academies.org

Transportation Research Thesaurus

*A Powerful Tool for Finding
Transportation Research
Information*



Website:
trt.trb.org

Transportation Research Thesaurus (TRT)

What is the TRT?

The TRT:

- Is a tool to improve the indexing and retrieval of transportation information.
- Contains 9500+ terms
- Covers all modes and aspects of transportation
- Provides references to related words and concepts.
- Groups terms in hierarchies under 21 “top terms”
- Is used to tag records in the Transportation Research Information Services (TRIS) databases so that they may be more easily found in a search.

Why Use the TRT?

The same concept often can be expressed in many different ways:

Hotspots
Hot spots
Accident prone locations
High Crash Locations
Blackspots
Dangerous spots

Using a TRT term allows all these ways of expressing the same concept to be retrieved in the same database search:

TRT Term
**High Risk
Locations**

How Do I Find TRT Terms?

You can search and browse the TRT at the TRT website: trt.trb.org.

If your term is not in the TRT, the search engine will refer you to the appropriate related term.

Once you’ve located a term, you can view its:

- Broader terms
- Narrower terms
- Related terms
- Definitions
- Scope Notes