



FLOW LABS

TRB SIX-MINUTE PITCH • NOVEMBER 2022

Our transportation systems are broken

1.4M

ROADWAY
FATALITIES EACH
YEAR

10 days

LOST TIME PER
PERSON PER
YEAR

6BN

TOTAL TONNES OF
CO2 EMITTED
EACH YEAR

\$3TN

TAXPAYER FUNDED
TRANSPORTATION
INFRASTRUCTURE
SPEND



SIDEWALK
CLOSED

ROAD
CLOSED

DETOUR

ROAD
CLOSED

DETOUR





OUR MISSION

**To make roadways cleaner,
clearer, and safer for
everyone.**

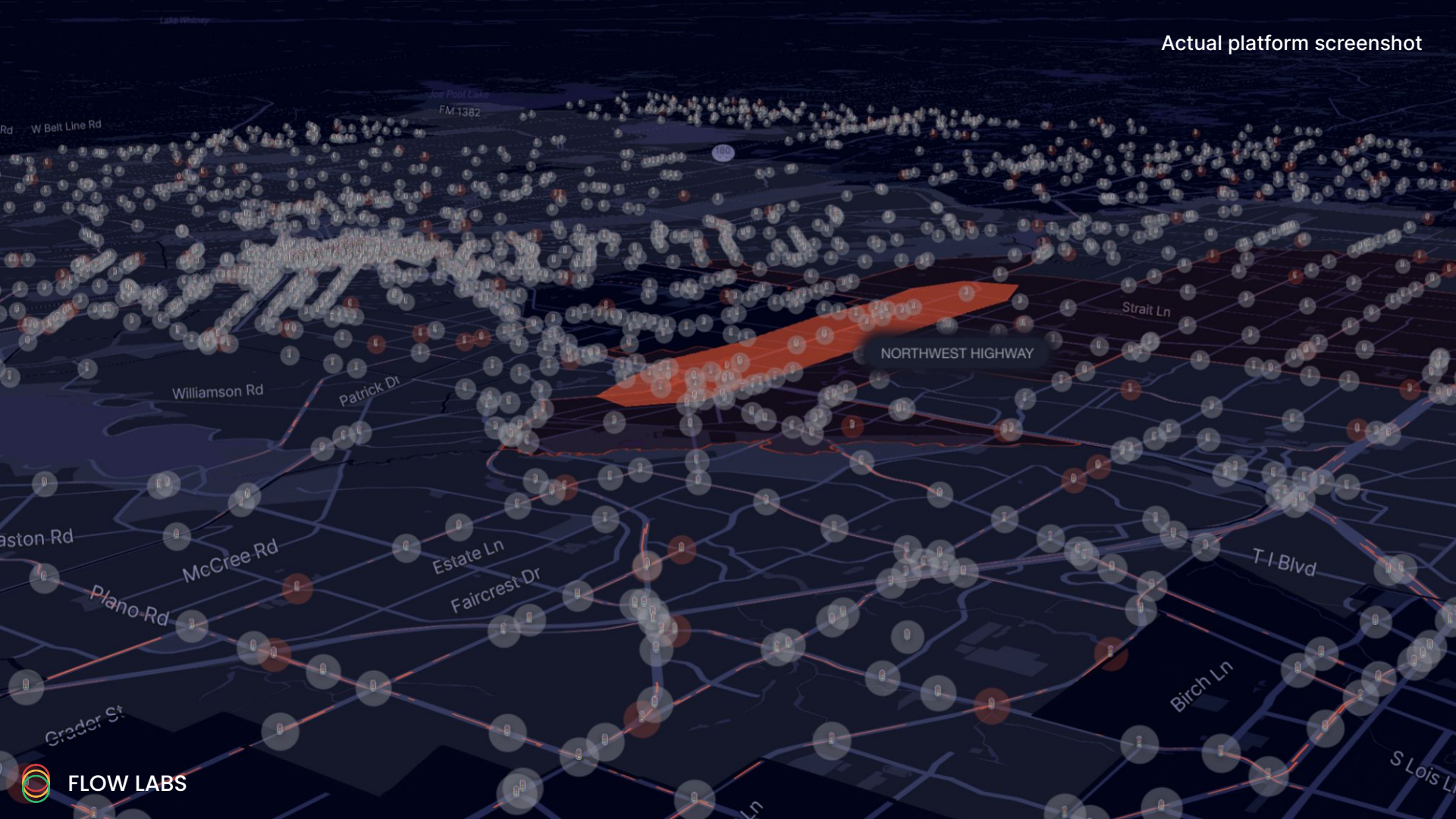
SOLUTION

**Our AI Digital Twin platform
enables us to optimize an
entire transportation
system in seconds.**



Digital “Twins” today...





IMPACT

World leading performance whilst saving transportation agencies 56% on their budgets



REDUCTION IN CRASH RISK

51% ↓



REDUCTION IN TRAVEL TIME

24% ↓



REDUCTION IN EMISSIONS

21% ↓

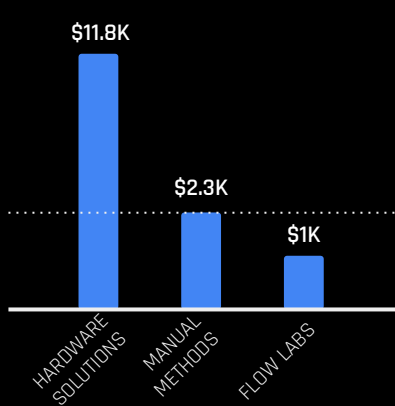
"This project was leading edge work—the first in the industry."

Mark Taylor, Traffic Signal Operations Engineer, UDOT

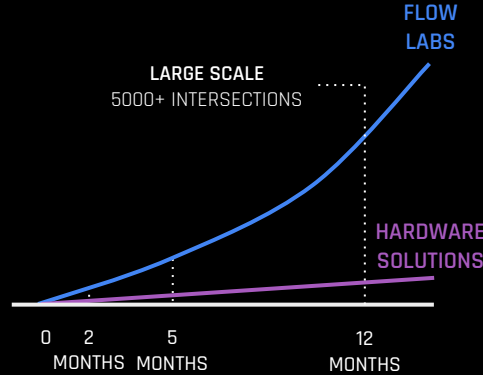


ADVANTAGES

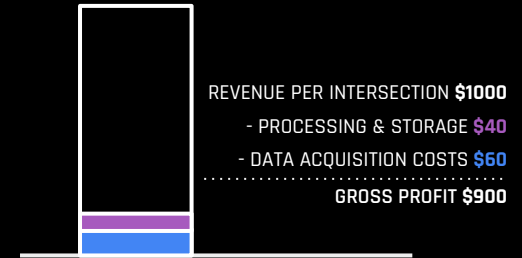
Being completely hardware-free gives us a massive competitive advantage



We can price 12x lower



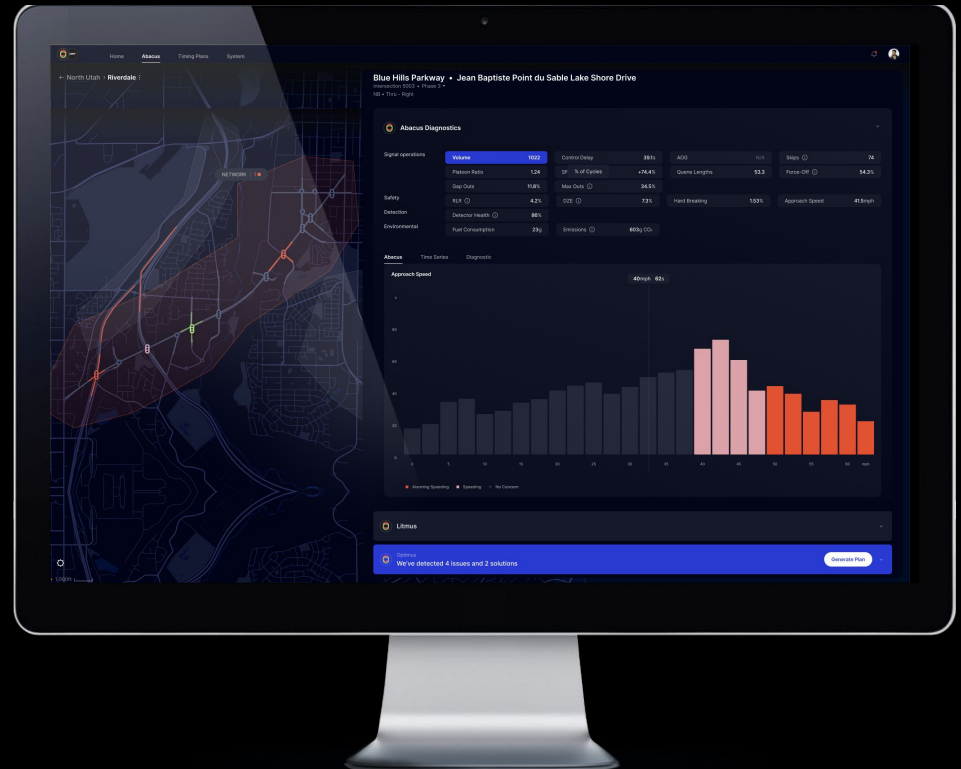
We can scale 50x faster



And we still make 90%+ margins

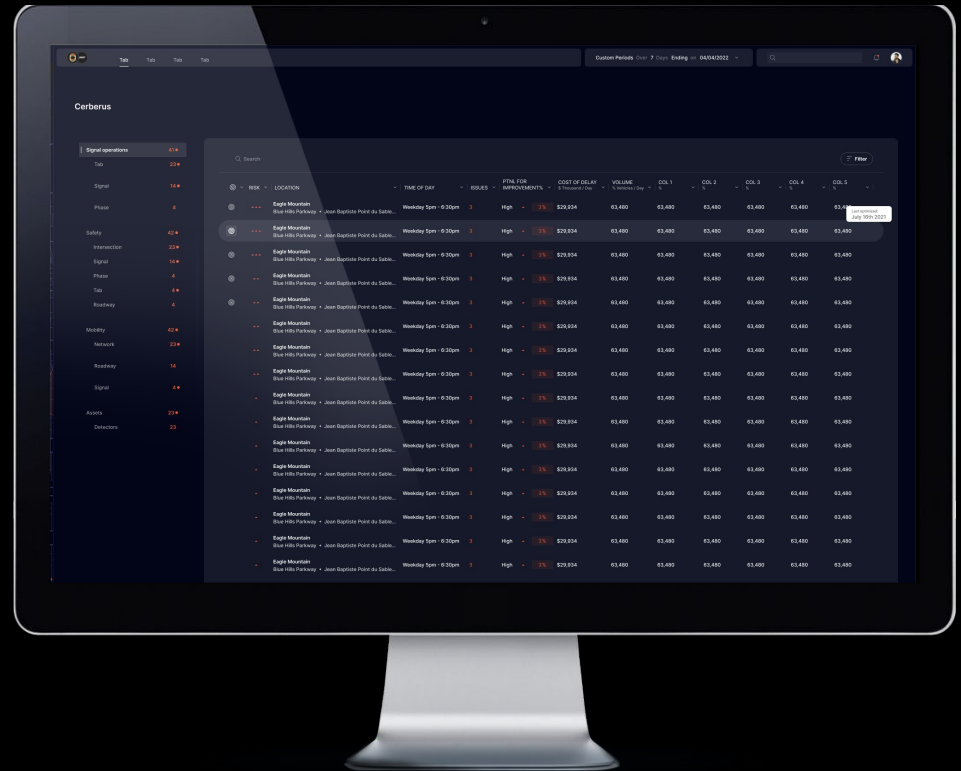
ABACUS

Comprehensive analytics and diagnostics via an intuitive interface



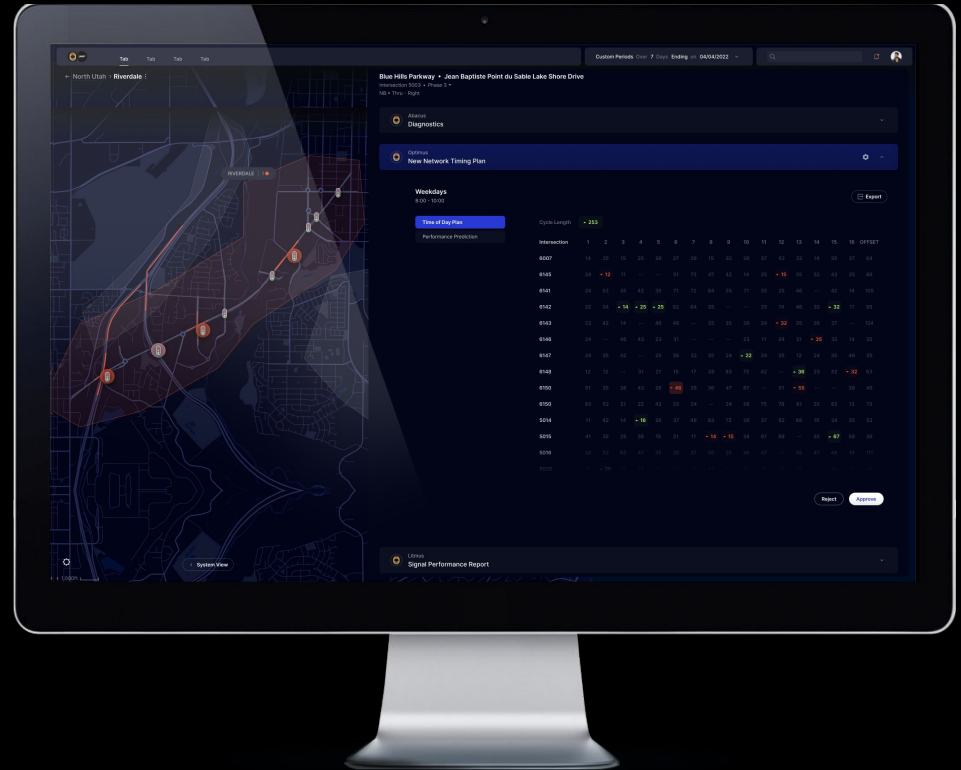
CERBERUS

Proactive monitoring, alerting, and prioritization



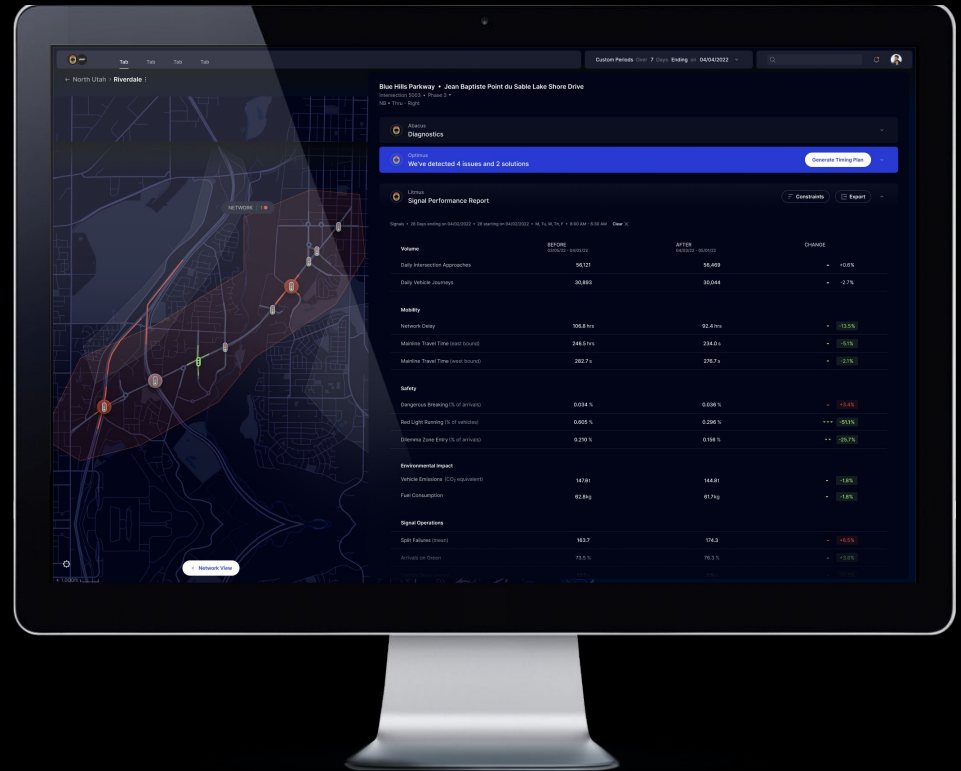
OPTIMUS

Instant, on-demand traffic signal optimization



LITMUS

Instant project performance measurement



TRACTION

We're rapidly moving towards market leadership

GO-TO-MARKET PARTNERS

wejo

Jacobs

Kimley»Horn



AECOM

FEHR & PEERS

TRANSPORTATION AGENCIES



SELECTED PIPELINE



\$2.5M ARR



North Central Texas
Council of Governments

\$3.5M ARR



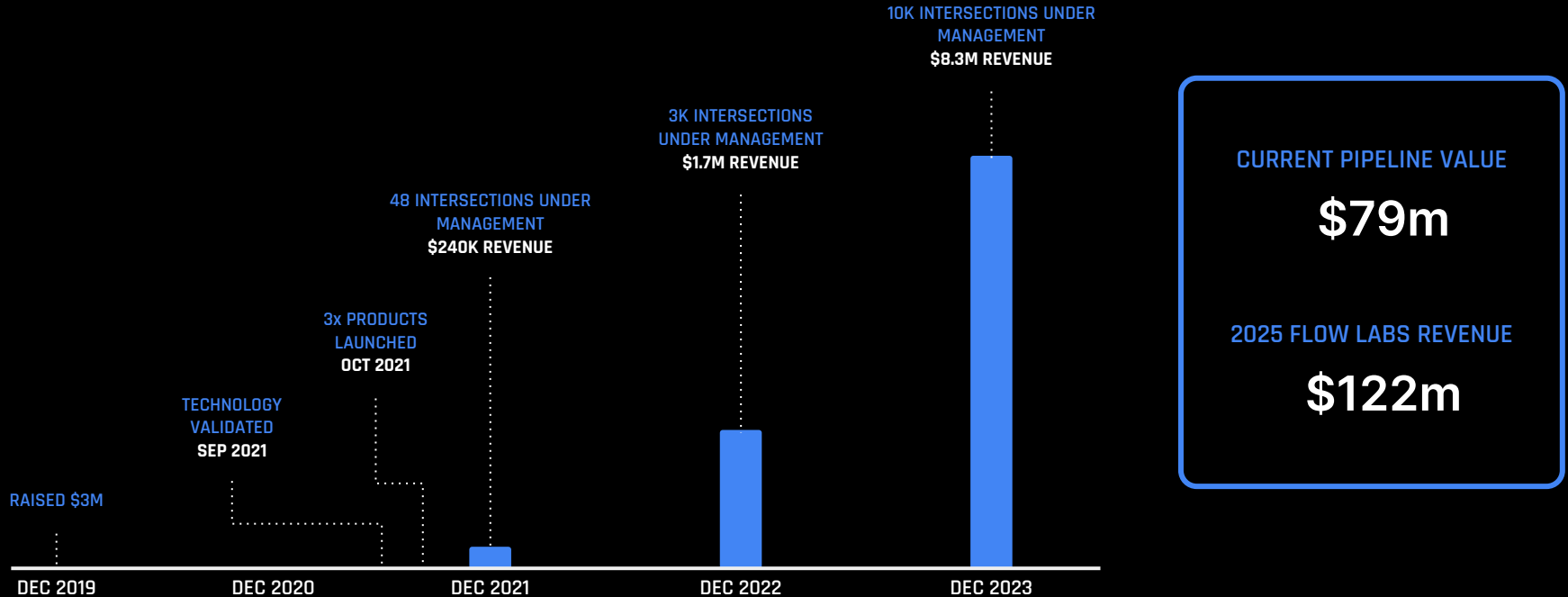
OCTA
\$1.2M ARR

VOLVO

DATA SHARING
PARTNERSHIP

TRACTION

And we're on track to quickly become market leaders in the industry



OUR TEAM

We have over 50 years of experience building traffic management technologies.



JATISH PATEL
FOUNDER & CEO



DR. WADE GENDERS
ML LEAD



AUGUST BRENNER
CTO

12 employees today

50+ years industry experience

ADVISORY BOARD SCOTT BELCHER, SHAILEN BHATT, MALCOLM DOUGHERTY, BARRY MATLACK, KATHRYN ALEDA, TUHIN SAHAI



VISION

Our AI Digital Twin platform will be used to manage traffic in every major city in the world. [Join us on our journey.](#)

50%

FEWER ACCIDENTS

50%

LOWER TRAVEL TIMES

50%

LOWER VEHICLE EMISSIONS



www.flowlabs.ai

Jatish Patel | CEO

jatish@flowlabs.ai