

Vermont's Transportation Asset Management Plan

July 16, 2018 - 12th Asset Management
Conference – San Diego, CA




Quick Facts

- State Developed Plan
 - 27 Member TAMP-WG
- Development Time = 52 months
- Pavements & Bridges only
 - National Highway System (NHS)
 - Non-NHS

**TRANSPORTATION ASSET
MANAGEMENT PLAN**

Right Investment, Right Asset, Right Time

*Submitted to FHWA
April 30, 2018*

 VERMONT
AGENCY OF TRANSPORTATION

27 Member
TAMP-WG

- 6 Task Forces

- AM Business Processes
- Customer Service Levels
- TAM Financial Plan
- Risk Management
- Data Management
- Life Cycle Planning

27 Member TAMP-WG

Subject Matter Experts / Asset Stewards representing.....

Pavements	Retaining Walls	Business Processes
Bridges	Public Outreach	Bike / Ped
Culverts	Maintenance	Safety
Rail	Fixed Asset Accounting	FHWA
Transit	Long Range Plan	IT
Aviation	Strategic Plan	Data Management
Signals	Performance Mgmt	Budget
Stormwater	Risk Management	Planning
Rock Slopes	Fleet Equipment	Capital Program



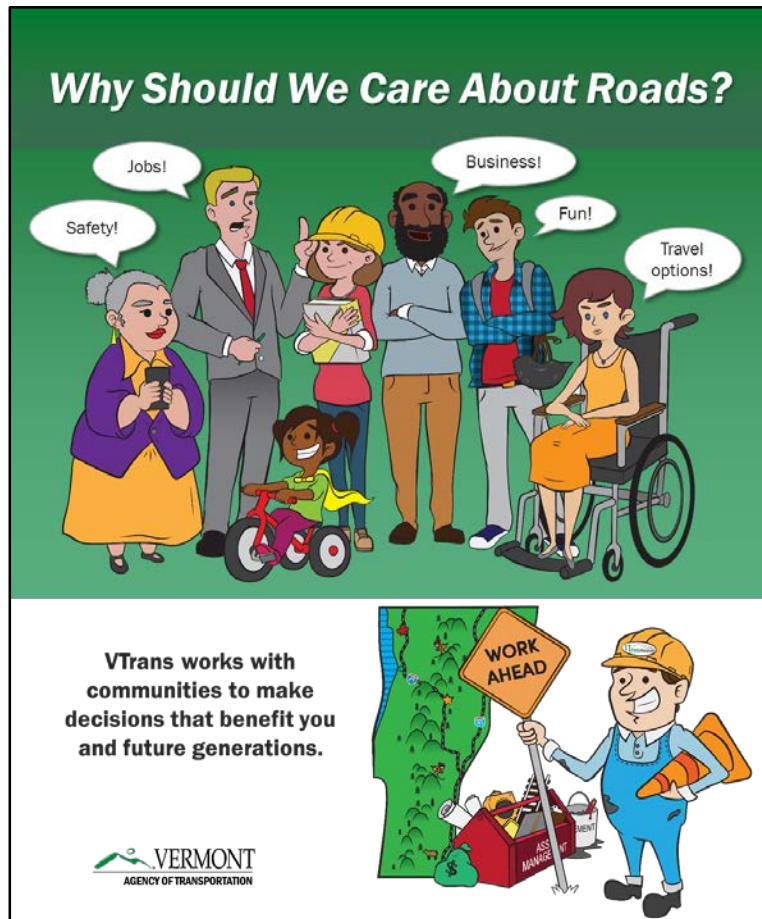
3 Deliverables

1. Executive Level Brochure
2. Federal TAMP Submittal
3. Practitioner's Guide

Different communication levels for different audiences with differing needs.

3 Deliverables

1. Executive Brochure



- Target Audience: Executive Team & General Public
- Easy to read & understand
- Provide Basic Overview of Asset Mgmt
- Make connections to Vermonters
- Keep it relevant, meaningful and useful



3 Deliverables

2. Federal TAMP Submittal

- Target Audience: FHWA
- Goal: Meet Federal Requirements
- Assets: Pavements & Bridges on NHS & non-NHS
- Targeted 40 page limit....Final version 70 pages

VTrans fixes roads the same way you may fix your house...a little preventive maintenance now will save a lot of money later.

\$1 of preventive road maintenance can delay spending \$6 to \$10 on new construction!



3 Deliverables

3. Practitioner's Guide



Audience: VTrans' Asset Stewards

Assets: Moving beyond pavements & bridges

Contents: Asset Fact Sheets, Task Force White Papers, Links to TAM Financial Plan

Small Culverts

Asset Readiness Assessment

- Ready
- Needs work
- Does not exist
- Not Applicable

Inventory
Data Collection
Asset Condition
GIS Layer(s)
Management System
Deterioration Models
Treatment Costs
Performance Monitoring
Budget vs. Performance
Asset Risk Registry

Inventory	Deterioration Models
Data Collection	Treatment Costs
Asset Condition	Performance Monitoring
GIS Layers	Budget vs. Performance
Management System	Risk Registry

Practitioner's Guide: Asset Fact Sheets

3 Deliverables – Status Update

Executive Brochure; multiple iterations, [100% complete]

Awaiting FHWA comments on Federal TAMP submittal. [95-100%]

Development of TAM Practitioner's Guide is underway now, schedule to be completed June 2019 [40%].

Challenges

- WG Duration (52 Months] – Waning Focus
- Lack of Awareness / Education – Narrow Focus
- Lack of Change Mgmt Commitment, Tools, Resources
- WIIFM / Unloading of unwanted duties to AMP

Challenges

- Uneven Enterprise Implementation
- Limited AM Staffing / Resources
- Innovation Saturation – Competition for focus.
- Negotiated Roles / Responsibilities

Positive Outcomes

TAMP Development Initiatives

- VTransparency (version 1) – [100%]
- SK1 [100%] under CI
- Major Plan Alignment – [50%]
- Individual Asset Mgmt Plans – [40%]

TAMP Development Initiatives



- AM Calculator – [30%]
- Customer Pavement Expectations (Mobile App) – [85%]
- VPSP2 – Project Prioritization [65%]
- Bridge Management System Development [65%]

Select TAMP Development Initiatives

- VT Asset Management Information System – VAMIS (Statewide) – [25%]
- Risk & Resiliency Planning Tool (App) Initial Phase – [95%]
- Hydraulic inspection Vehicle (HIVE), – [75%]
- “Back to Basics” Maintenance Policy – [60%]

*Today's decisions
impact tomorrow's
performance.*

VTrans Asset Management & Performance Bureau

Chad A. Allen, P.E.
chad.allen@vermont.gov
(802) 828-0768

