

# Meeting the Challenge of SGR:

*The MBTA Green Line LRV Fleet in Transition*

**Kimberly Woollard**

Deputy Director

Light Rail

MBTA

**Matthew Fuccillo**

Principal Specialist,

Rolling Stock

Mott MacDonald

**14TH NATIONAL LIGHT RAIL &  
STREETCAR CONFERENCE** //

**TRB**



# The MBTA System in Boston

## America's First Subway

- Heavy Rail
- Light Rail
- Commuter Rail
- Bus
- Ferry



# The Green Line

*Highest ridership per mile of US Light Rail*

66

23

4

150

200,000

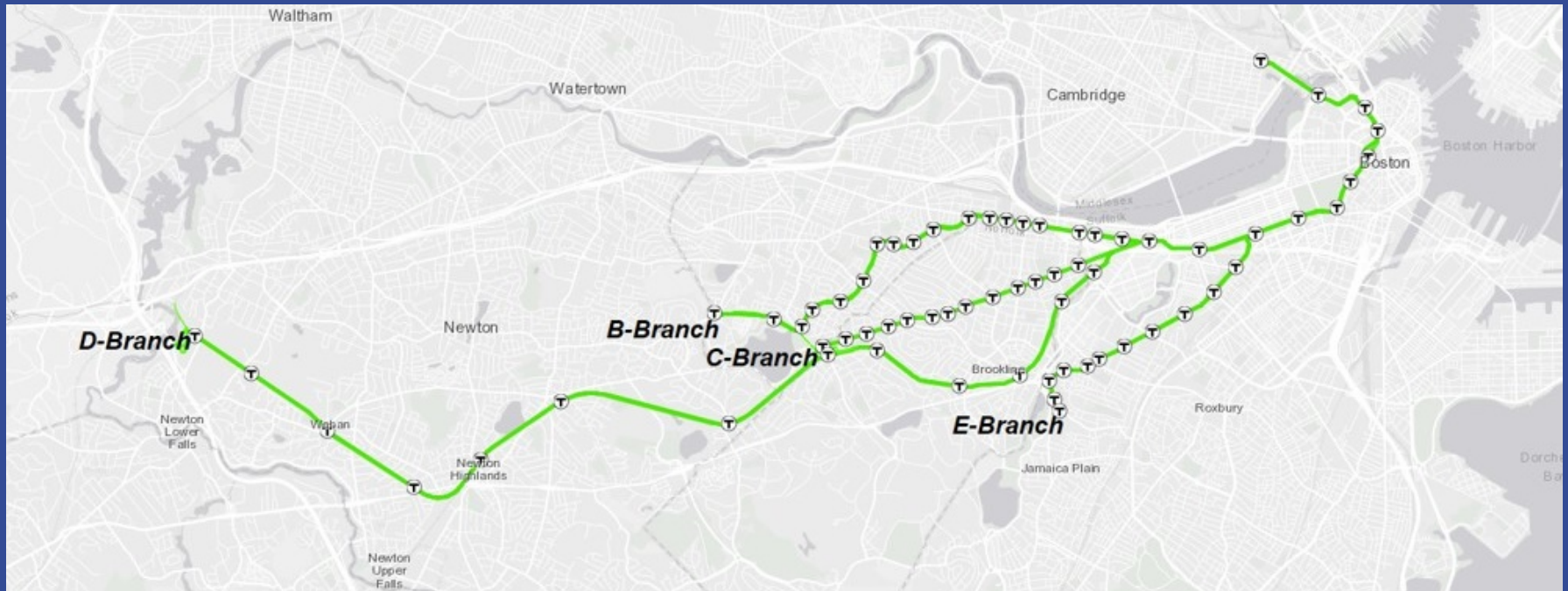
Stations

Route Miles

Branches

Cars for Peak

Weekday trips



# The Vehicle Fleet

*Different styles, ages & components*

**Type 7: 103 vehicles**

– Kinkisharyo, 30 yrs. old



**Type 8: 86 vehicles**

– AnsaldoBreda, 15 yrs. old



**Type 9: 24 vehicles**

– CAF, New



**Type 10...**

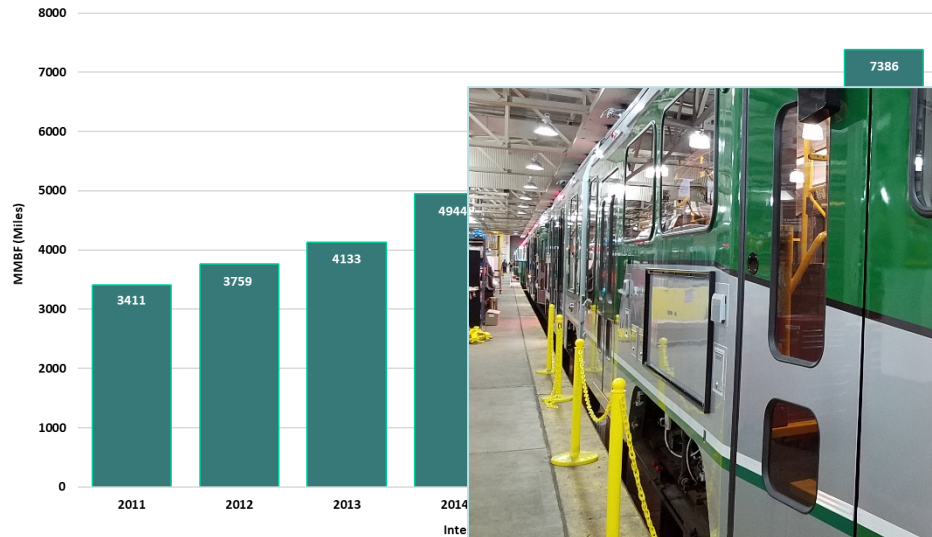


# Vehicle Programs

## *Overhauling, Improving & Commissioning*



Fleet Mean Miles Between Failures by MBTA Fiscal Year  
(FY2011 to FY2018)



# The Maintenance Facilities

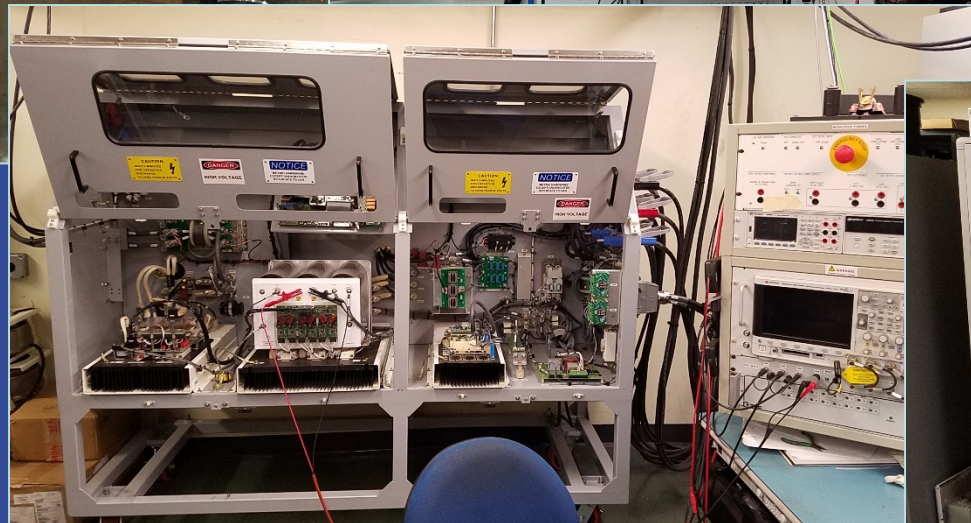
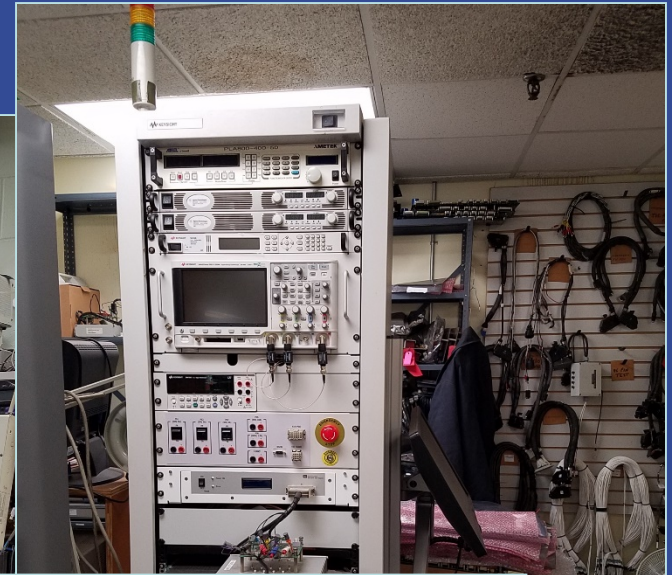
*Located at the end of each branch*

- Riverside
- Reservoir
- Lake Street
- GLX (coming)



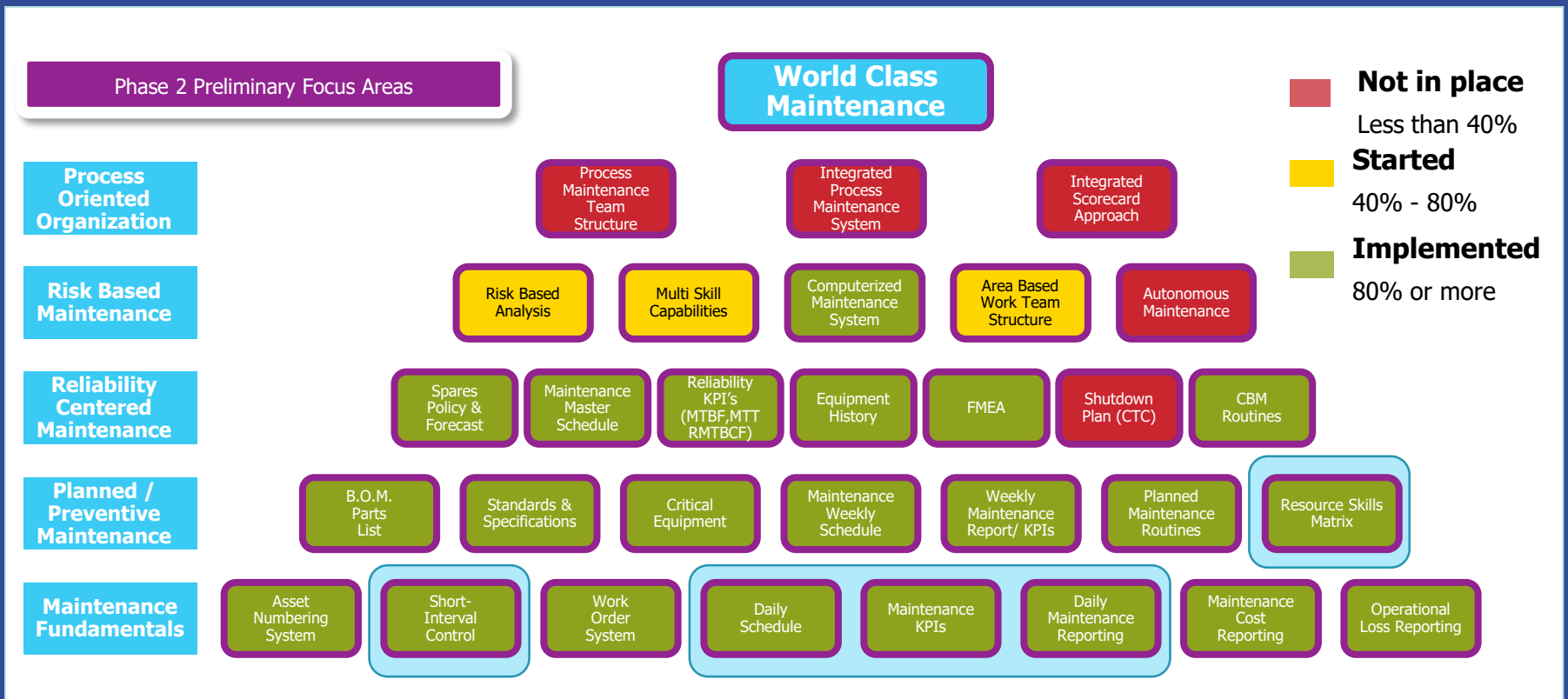
# Bench Work & Testing

*Critical role to keeping cars running*



# Lean Study

*Implementing new processes and culture change*



# 'White Boards'

Communicating to better plan and prioritize

* TRUCKS		FOREMAN:	REPAIRERS:	DATE:
		BILLY S	VIC / BARRY	3-15-19
Truck#	TASKS	Planned Hrs	Actual Hrs	Notes
19541	TAK BAK INSP	8		
	INSP TRK	8	4	
	BELLOW	2		*NO STOCK 1P
	P/B Puff	2	2	
	LAT LINK	2	2	
18906	INSP	8		
	*2 MTR	24	8	Remove 6 /
	BELLOWS	2		*NO STOCK 1P
* TIRES				
	7 MTR TRKS			* WAITING ON TIRE WORK
	1 C-TRUCK	?		BACK TO BACK BIA. REAR DOWN
Backup Task	Name	VARIANCE CODE COUNT		
Truck Brake Insp		1P-HHT	2P-	
Truck Brake Rebuild		1M-	2M-	
		2E-	2E-	
REMINDERS / SAFETY *				
NEED @ GEARBOXES REBUILD				
* 18 TRUCKS NEED TO BE REBUILT				
SAFETY PART OF ALSTOM PROGRAM *				
12 MTR Trucks @ C-T Trks				

ID		FOREMAN:			DATE:		
		1st CALLAHAN	2nd RYAN	3rd	3/15/19		
CAR#	PRIORITY (H/M/L)	RAIL SPOT	PLANNED HRS	ACTUAL HRS	REPAIRER(S)	% COMPLETE	NOTES
695	M	7C	64		NB	20%	ID'S
610	L	5 RAIL	120			20%	ARIC WALL REPAIRS
Backup Program	NAME	VARIANCE CODE COUNT		REMINDERS / PASS DOWN / SAFETY			
		1P-HHT	11	2P-HHT			
		1M-		2M-			
		2E-		2E-			

# Questions?

*Let's plow through them...*

