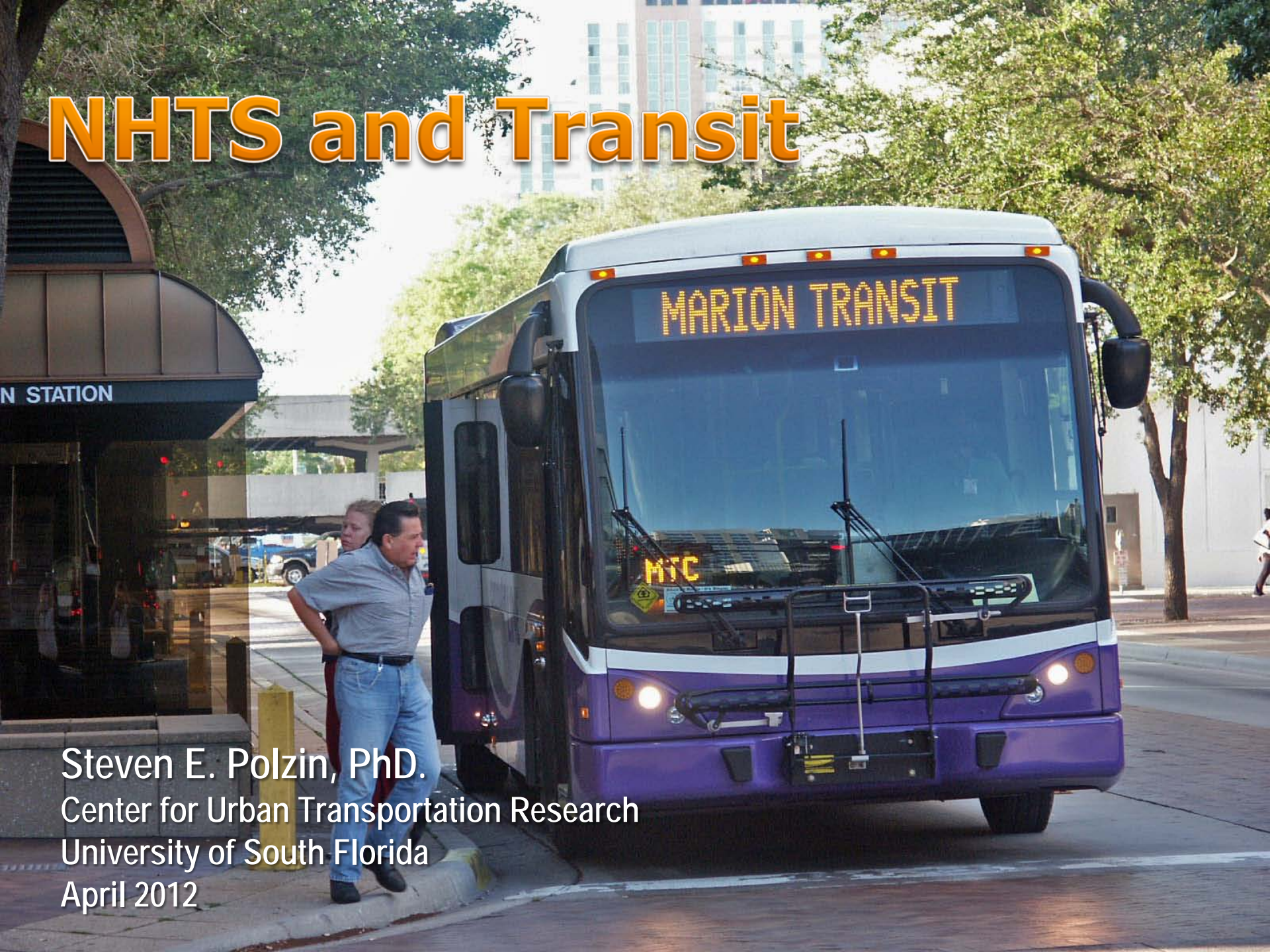


# NHTS and Transit



Steven E. Polzin, PhD.  
Center for Urban Transportation Research  
University of South Florida  
April 2012

# Fundamentals on Interpreting NHTS Data

“If you torture the data long enough, nature will confess.”

Ronald Coase – 1991 Noble Prize in Economics

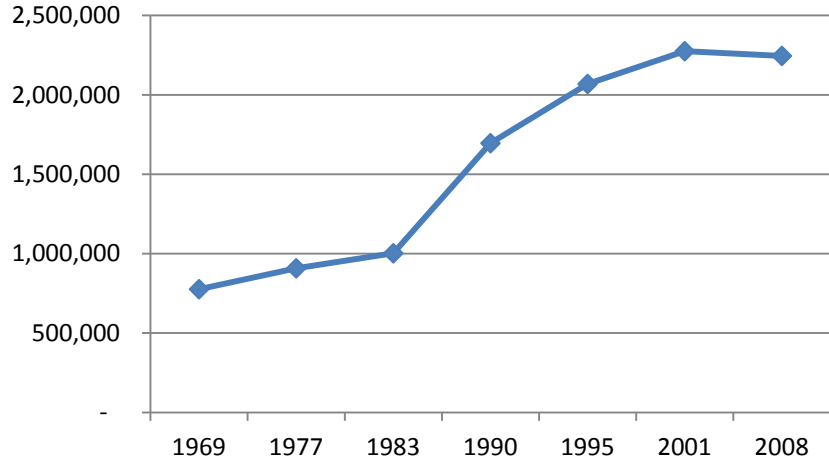
“If you torture the data long enough you can make it confess to anything.”

Alan Pisarski – No Noble Prizes

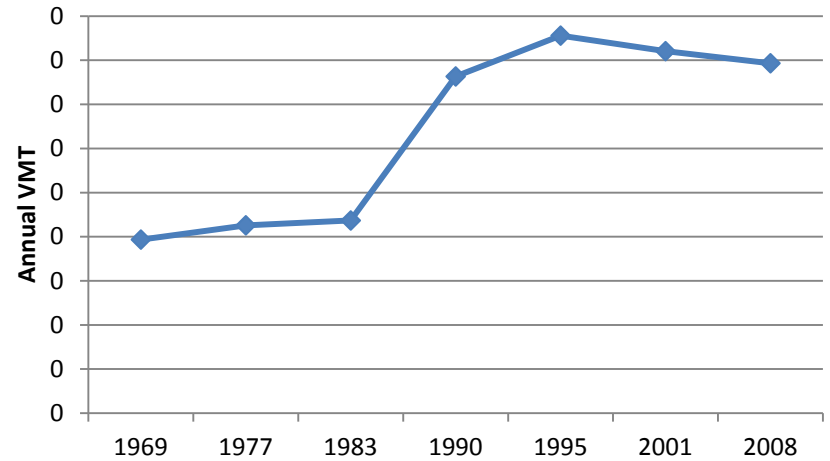


# Travel Trends

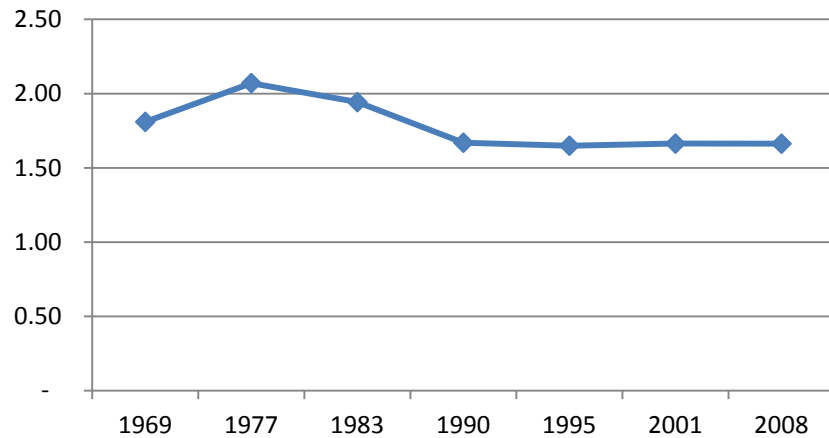
## VMT in Millions



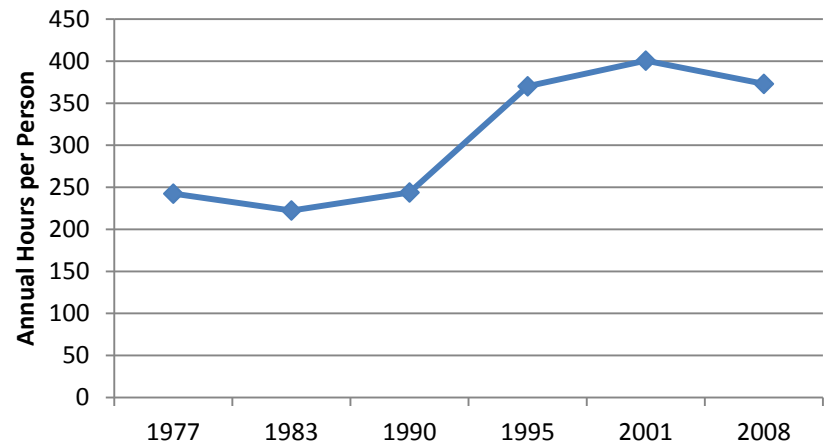
## VMT per Person



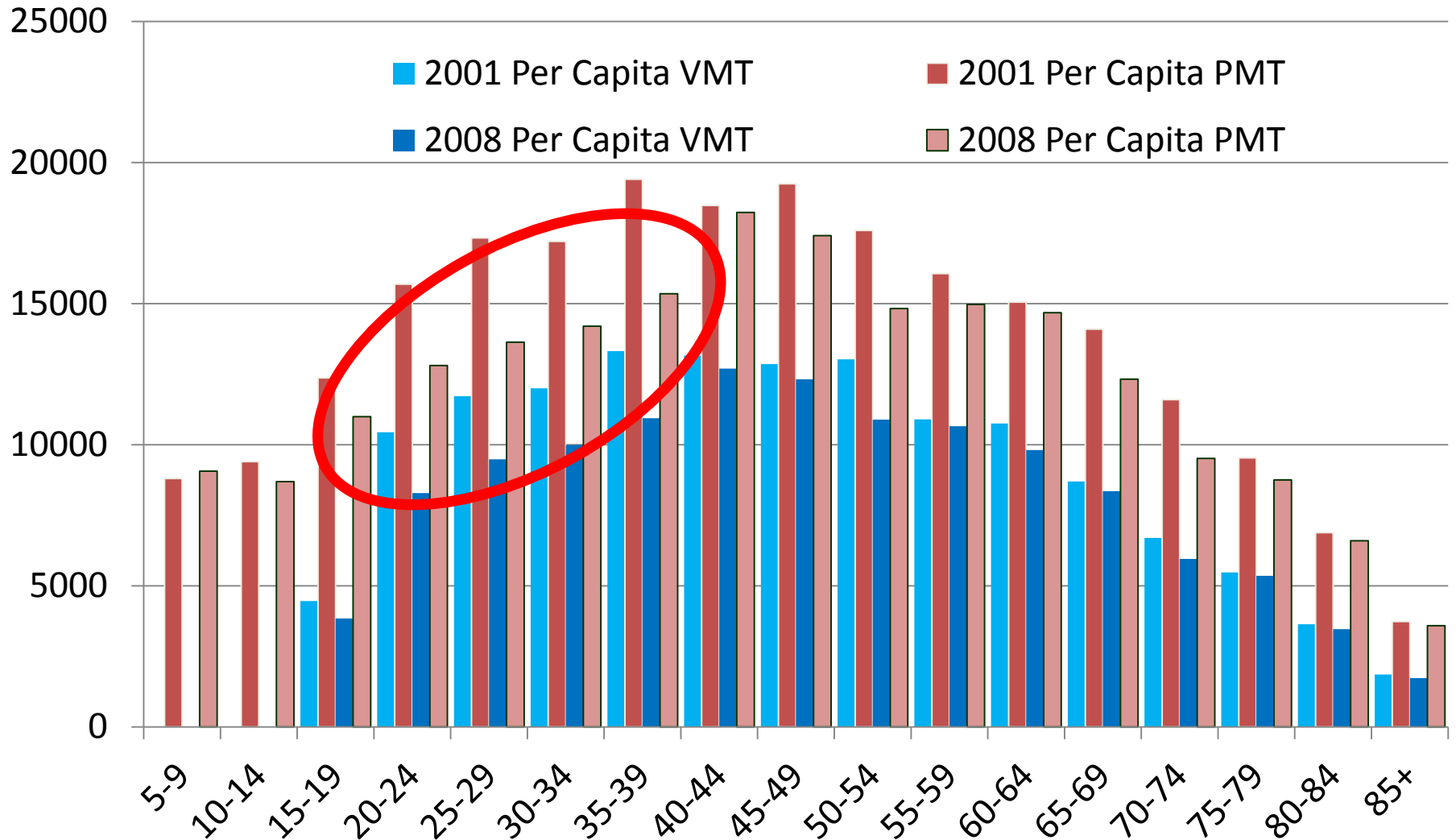
## PMT/VMT



## Travel Time per Capita



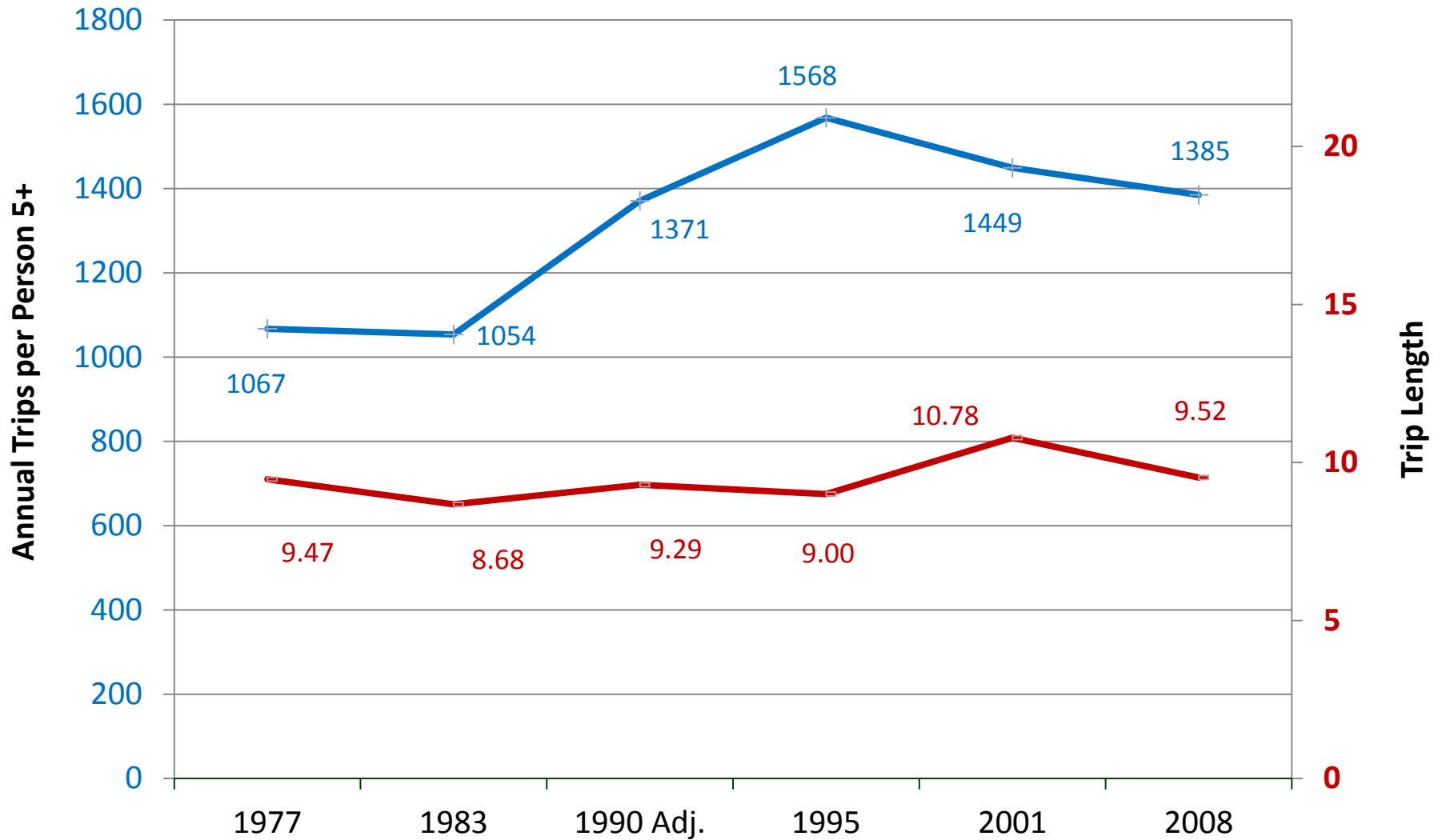
# PMT and VMT per Capita by Age



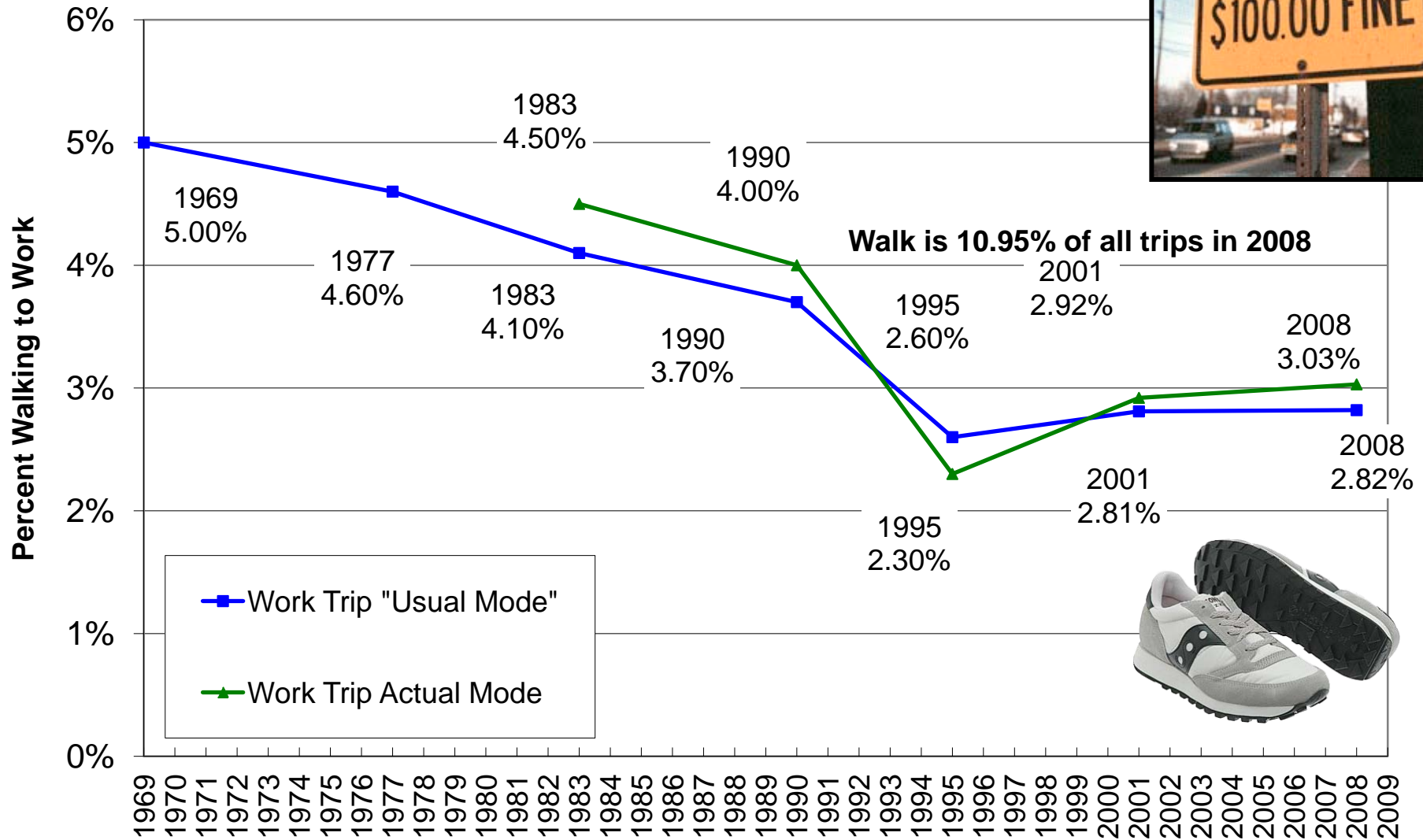
# The NHTS Transit Sample

Select Metro Areas	Unweighted Transit Trips	Share of National Transit Sample	Weighted Share of National Transit Sample	Share of National Population	UZA Share of NTD National Trips
Boston--Worcester--Lawrence, MA--NH--ME--CT	60	0.7%	2.9%	2.0%	3.7%
Charlotte--Gastonia--Rock Hill, NC--SC	7	0.1%	0.1%	0.6%	0.2%
Houston--Galveston--Brazoria, TX	175	2.1%	1.0%	1.6%	0.8%
Louisville, KY--IN	0	0.0%	0.0%	0.3%	0.2%
Minneapolis--St. Paul, MN--WI	11	0.1%	0.4%	1.1%	0.9%
New York--Northern New Jersey--Long Island, NY--NJ--CT--PA	2552	29.9%	33.1%	7.3%	40.5%
Phoenix--Mesa, AZ	237	2.8%	0.3%	1.4%	0.7%
Salt Lake City--Ogden, UT	20	0.2%	0.5%	0.6%	0.3%
Tampa--St. Petersburg--Clearwater, FL	59	0.7%	0.3%	0.9%	0.3%

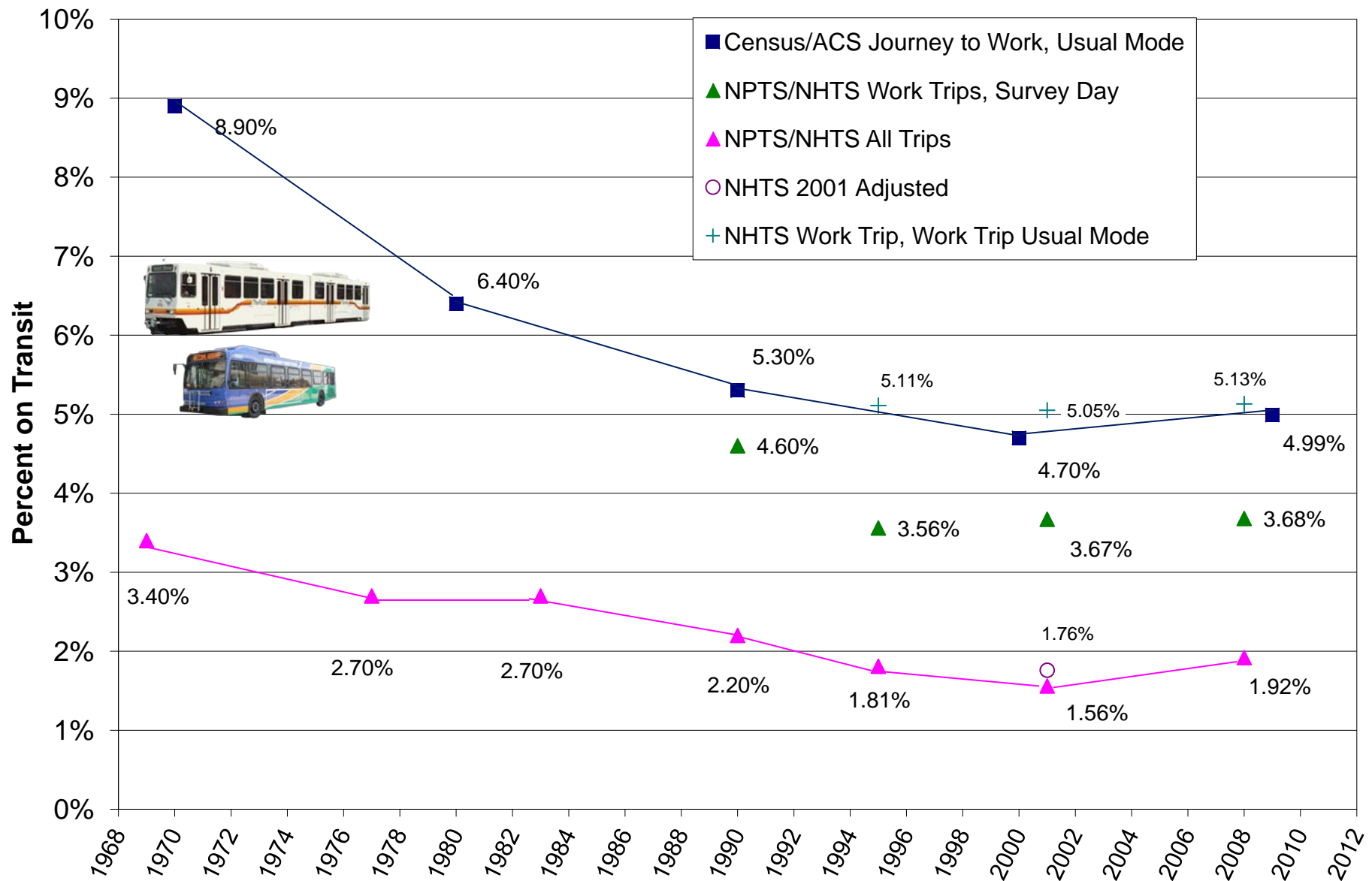
# Trip Rate and Length



# NPTS and NHTS Work Trip Walking Mode Shares

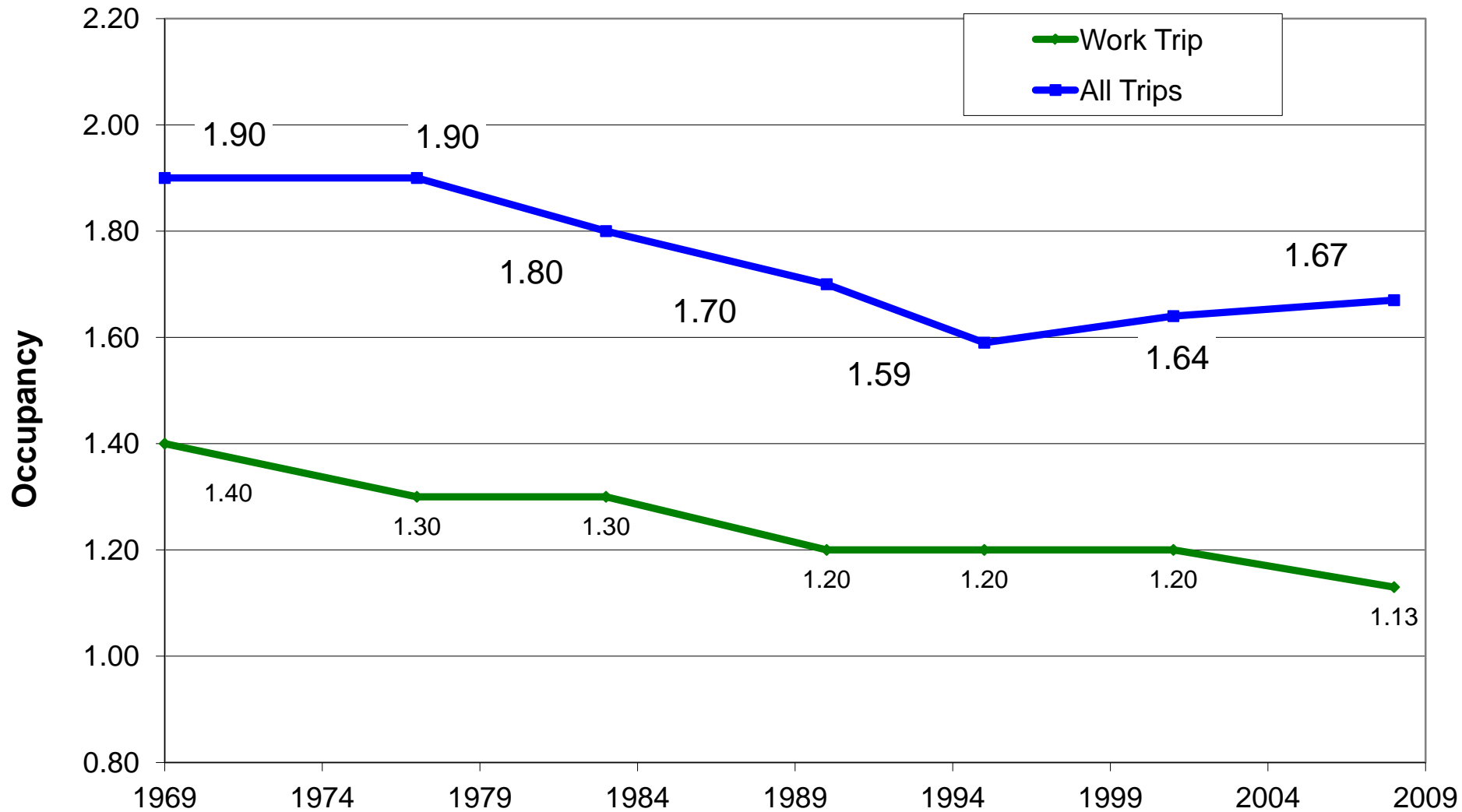


# Transit Mode Share Trends

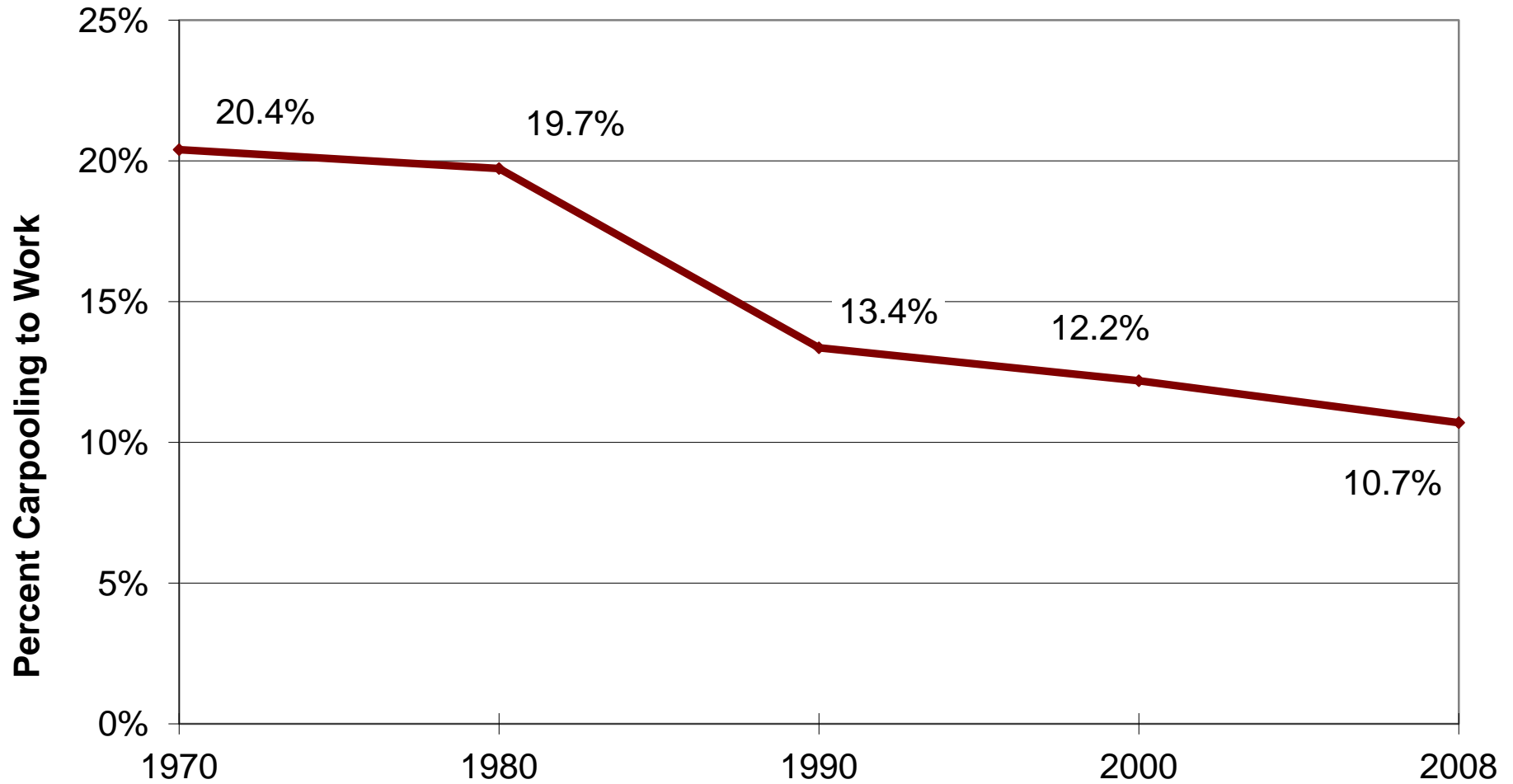




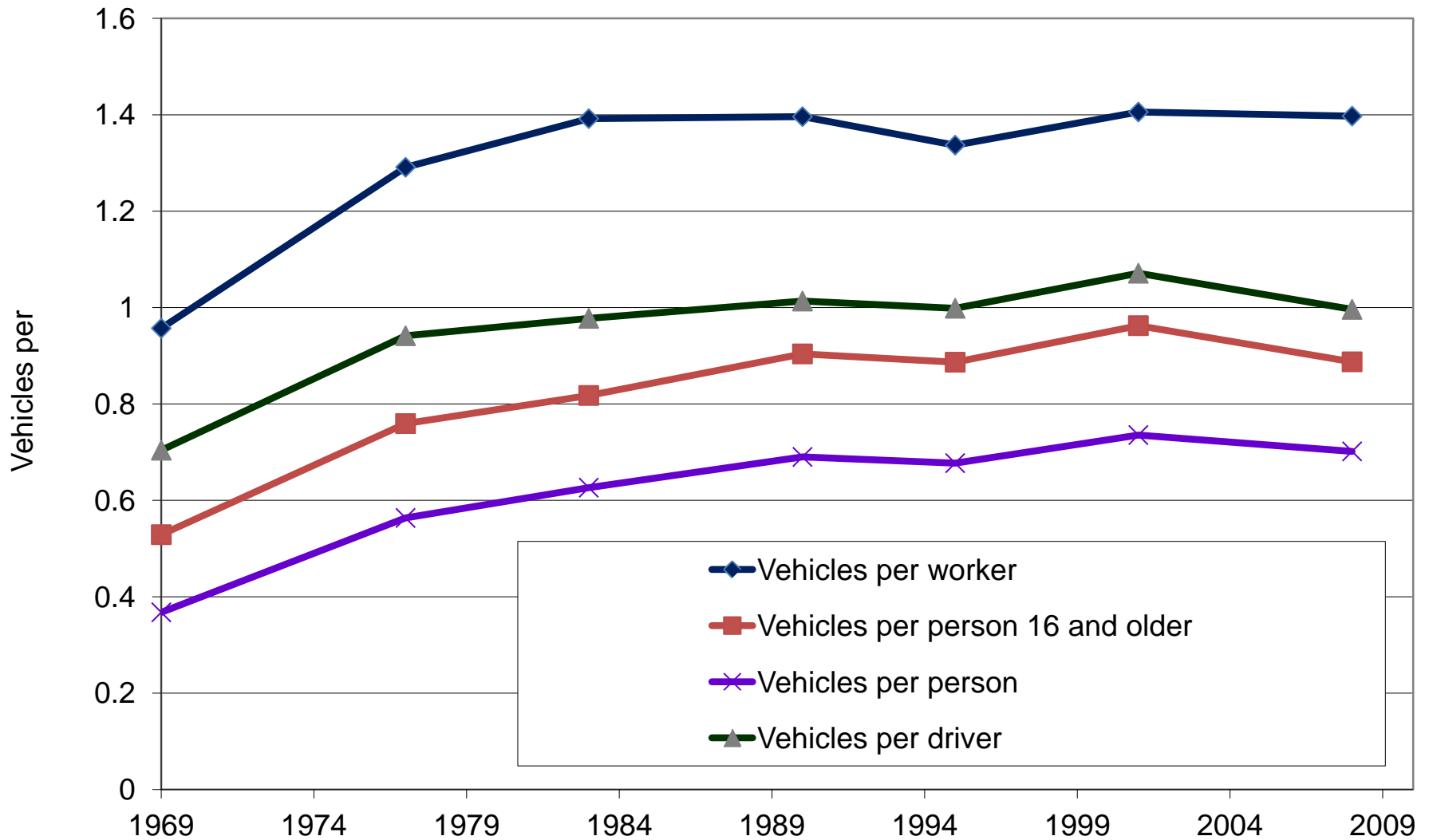
# Vehicle Occupancies - NHTS



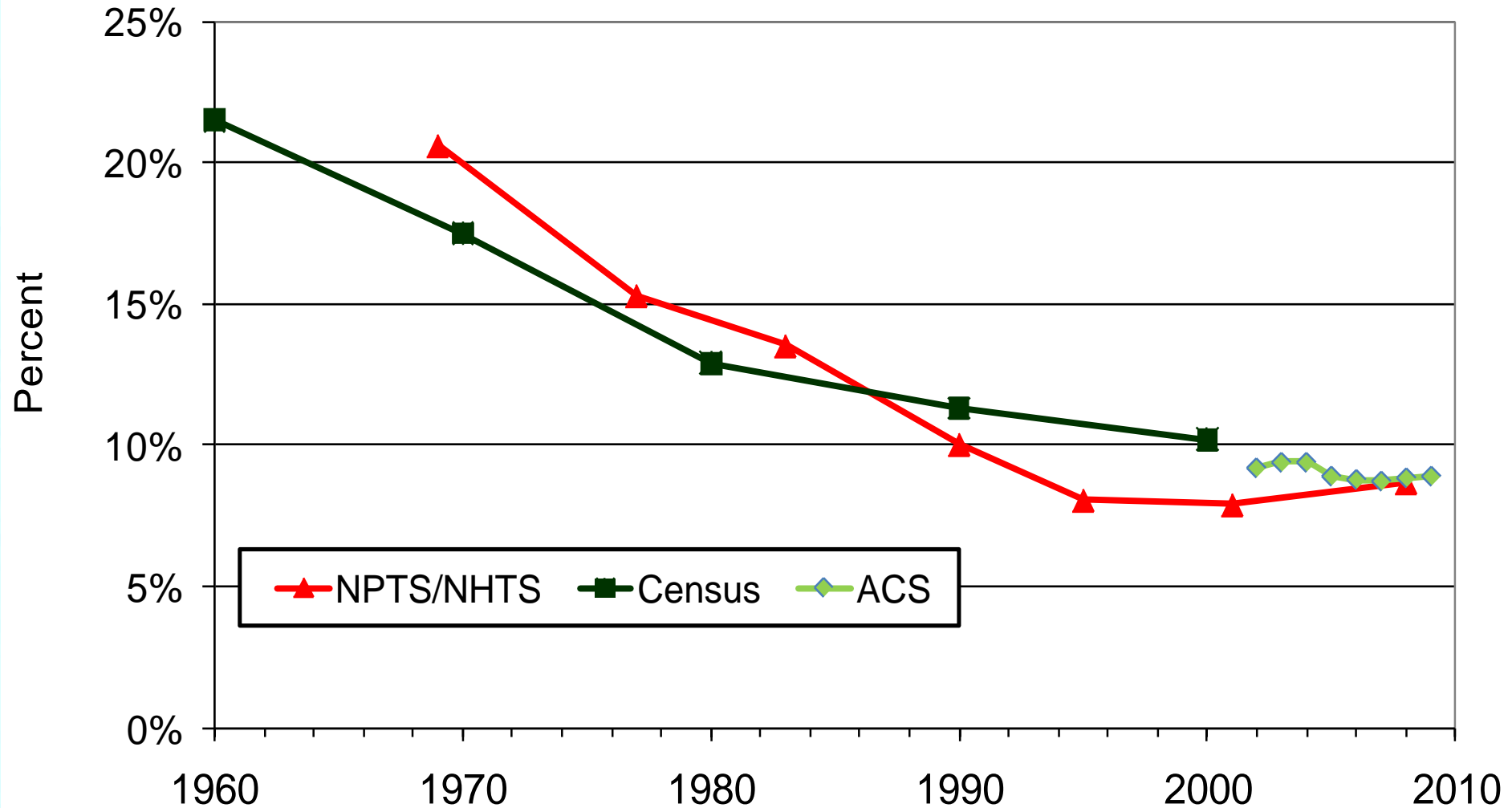
# Carpooling Mode Share (ACS)



# Vehicle Availability



# Declining Zero-Vehicle Households?



Source: CUTR analysis of NHTS ,NPTS,U.S. Census Bureau and 2002-09 ACS

# Household Vehicle Ownership Distribution

## Household Percents

### National Household Vehicle Ownership Distribution, 2009

HH Vehicles	Number of Adults in HH					
	1	2	3	4	5+	All
0	5.79%	2.28%	0.38%	0.19%	0.05%	8.69%
1	20.40%	10.18%	1.31%	0.33%	0.06%	32.28%
2	3.66%	29.04%	2.92%	0.62%	0.08%	36.32%
3	0.74%	9.06%	3.72%	0.78%	0.09%	14.39%
4	0.21%	2.58%	1.54%	0.82%	0.13%	5.30%
5+	0.14%	1.40%	0.82%	0.49%	0.17%	3.02%
All	30.96%	54.54%	10.69%	3.23%	0.58%	100.00%

20.66%

More cars than adults

54.16%

Cars equals adults

16.50%

Fewer cars than adults

8.69%

Zero cars





# Who is Using Transit?

**HERMAN®**

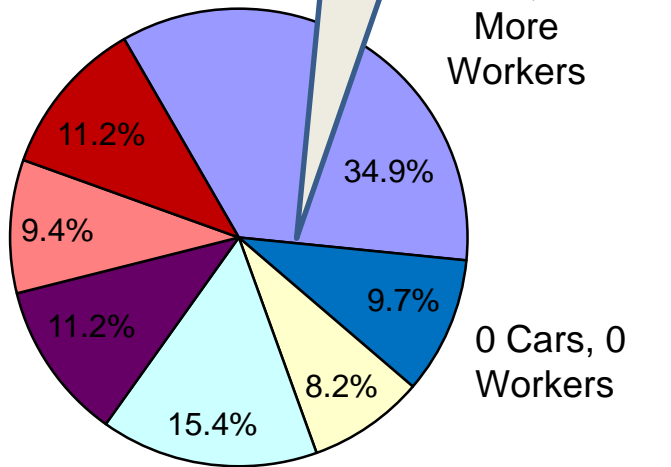


**"I'm not stealing it. I'm moving  
it closer to my house."**

# Transit Market Share by Car Availability

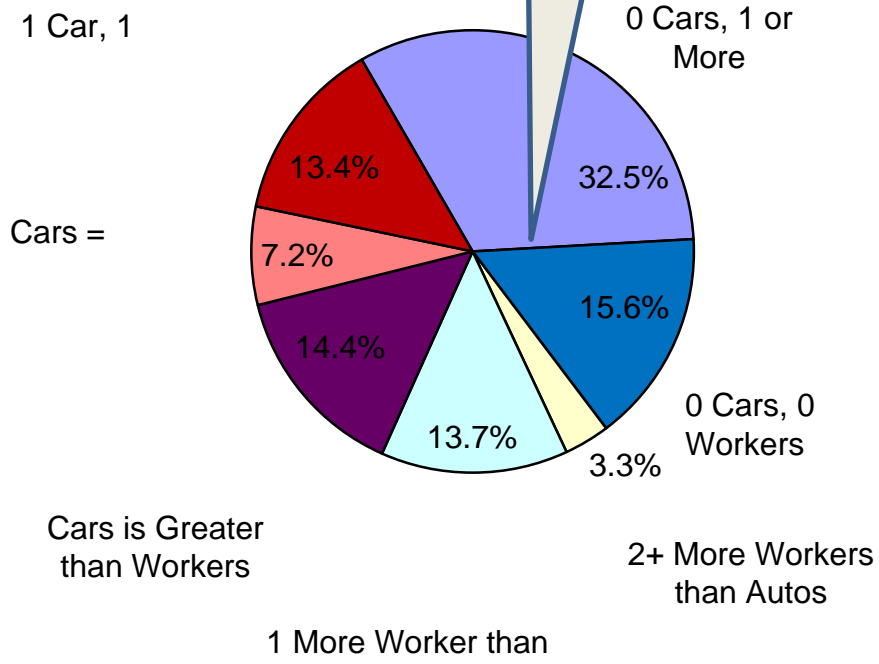
0 car household riders make up 44.6% of riders

2001

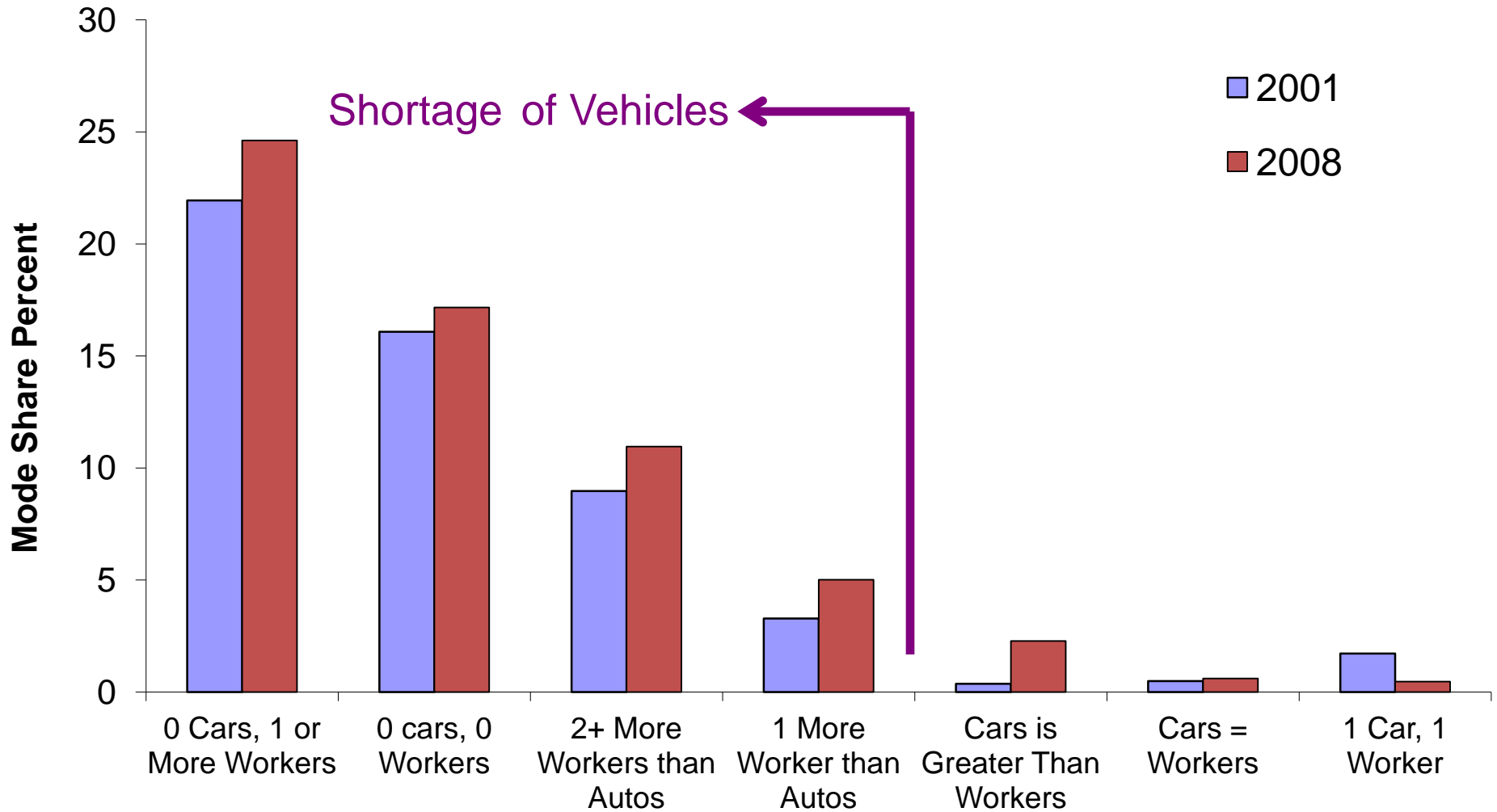


0 car household riders make up 48.1% of riders

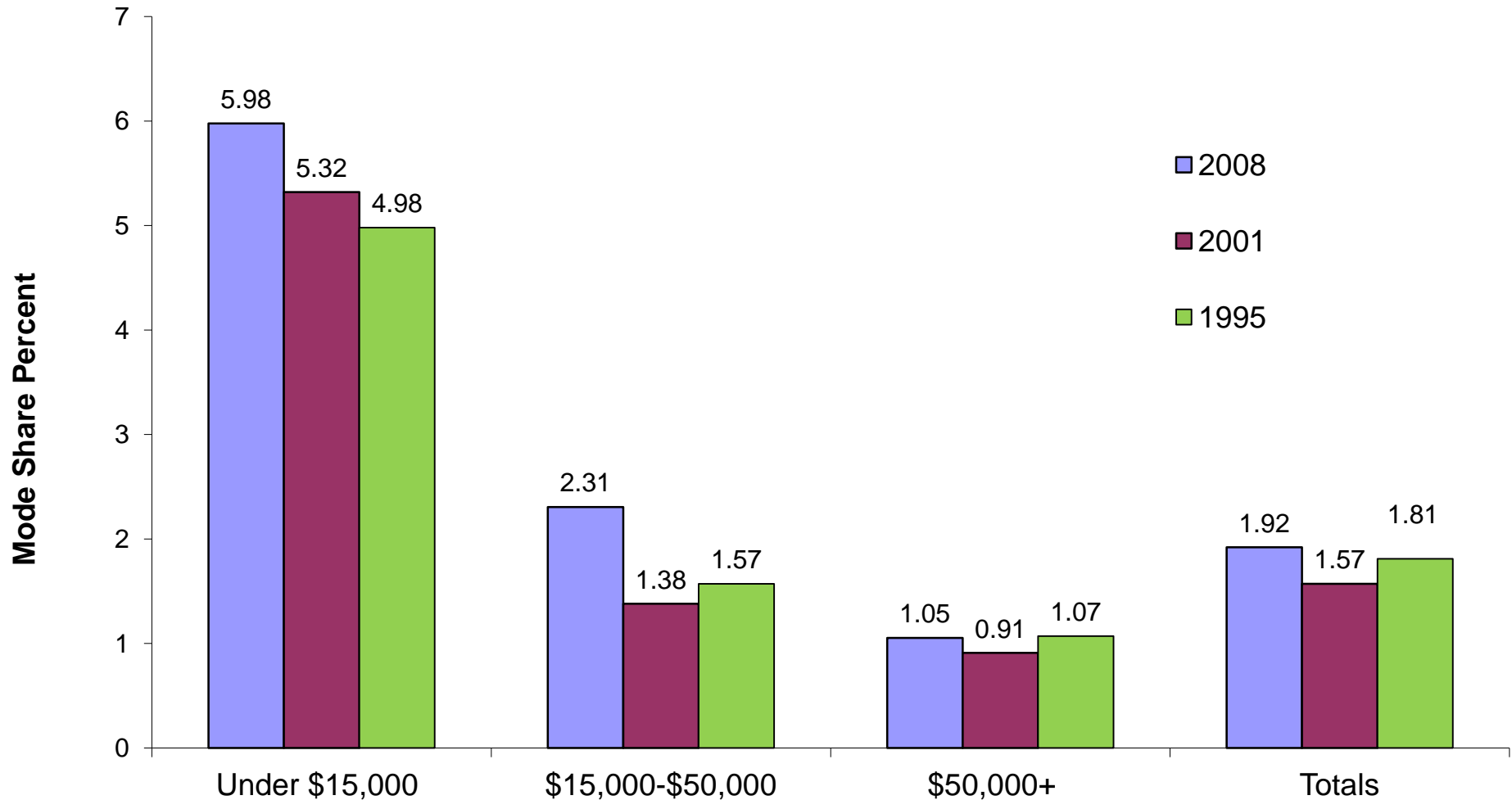
2008



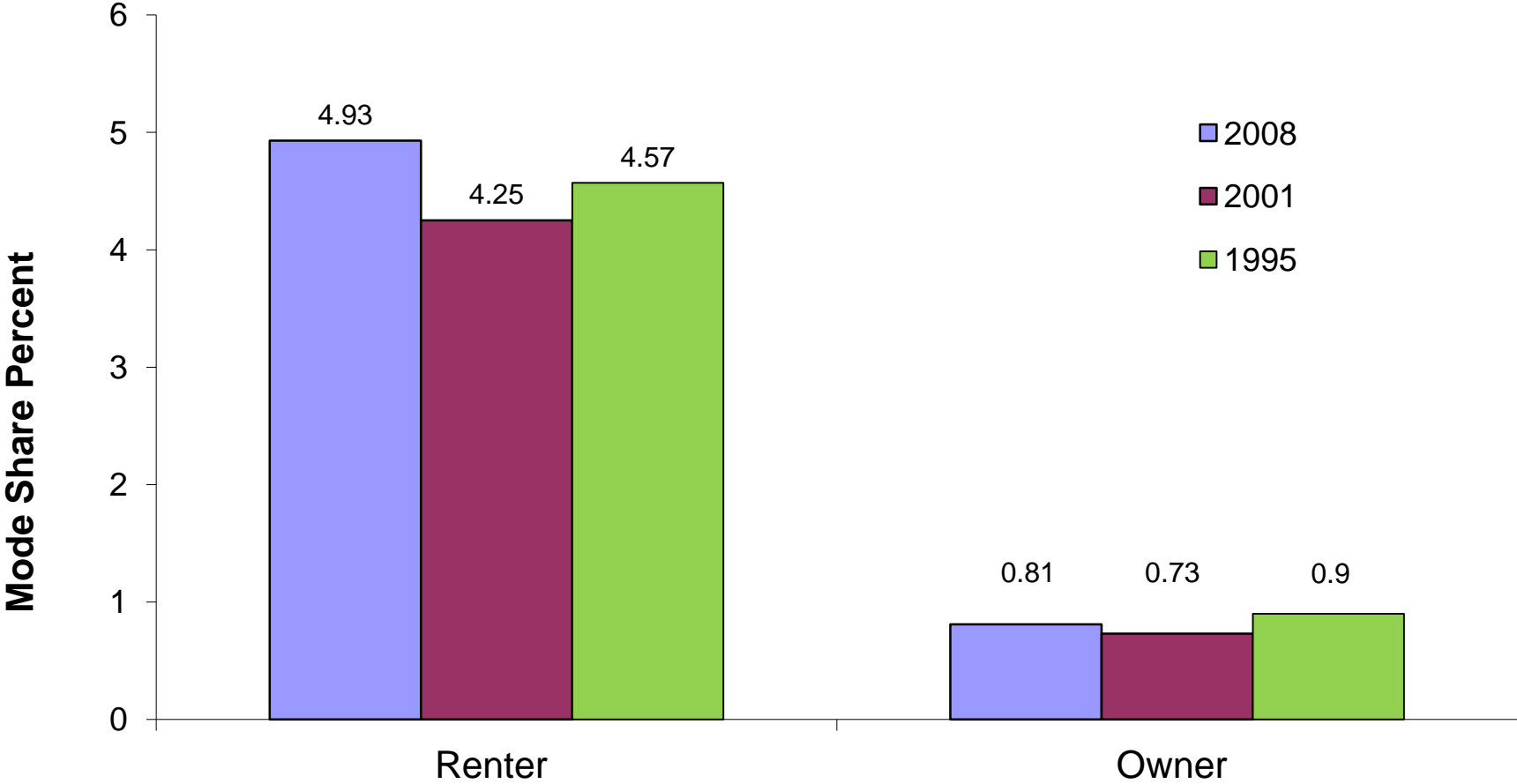
# Transit Mode Share by Vehicle Availability



# Transit Mode Share by Income

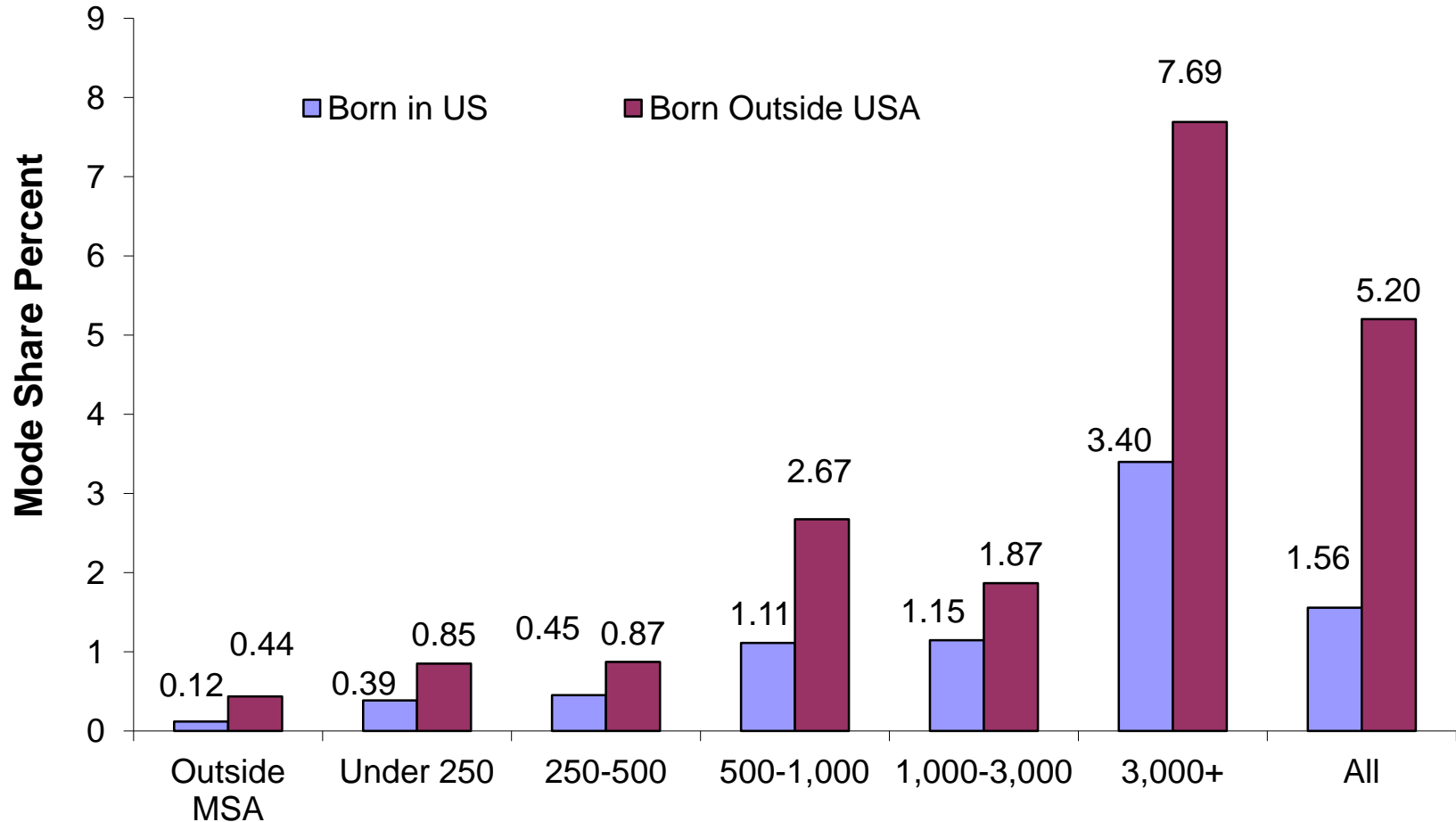


# Transit Mode Share by Home Ownership Status

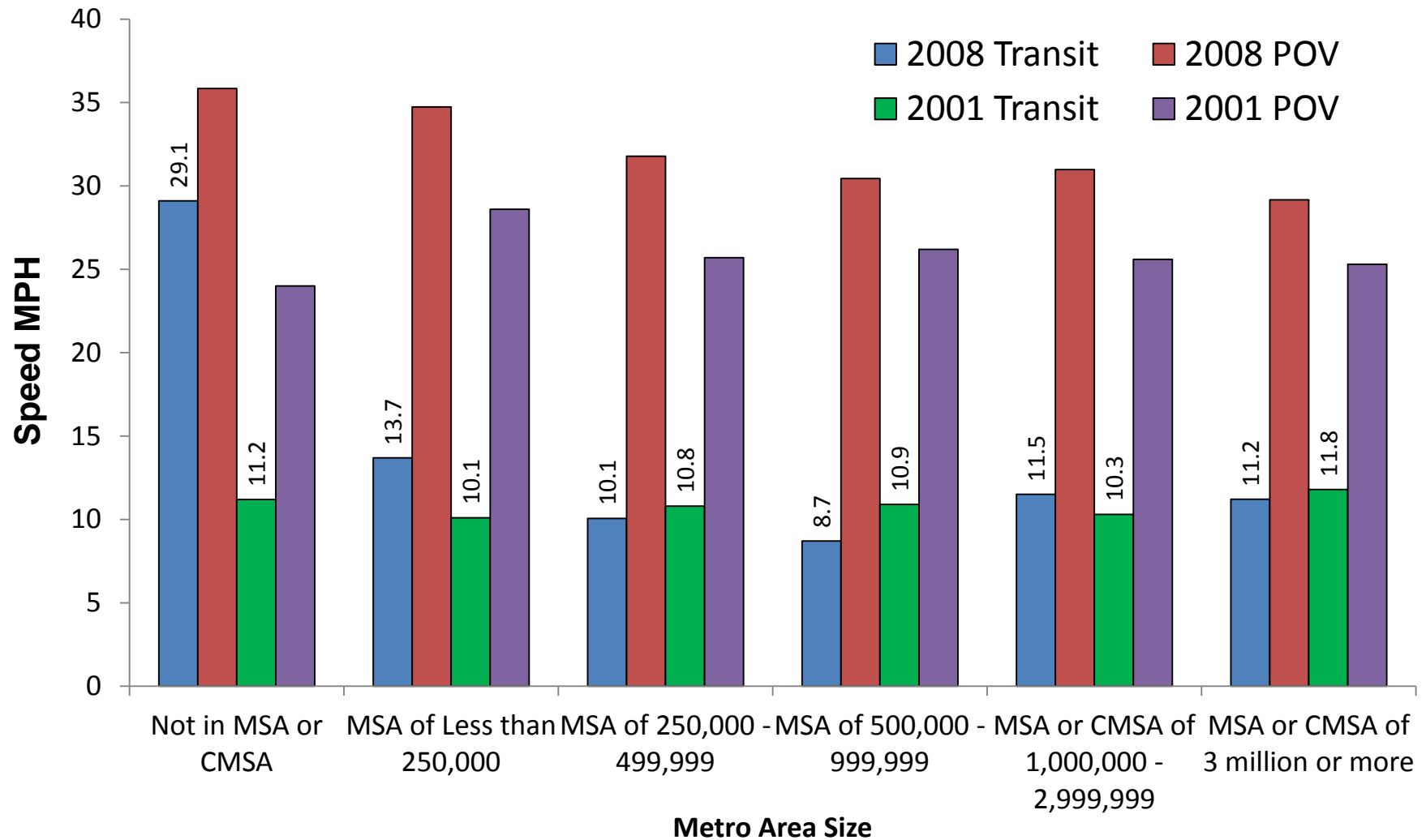




# Transit Mode Share by Immigration Status

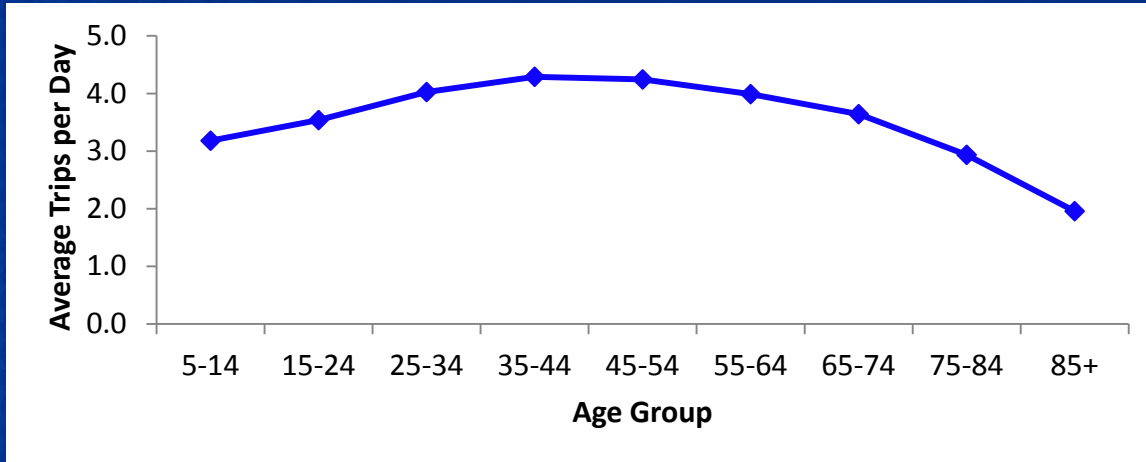


# Mode Speeds

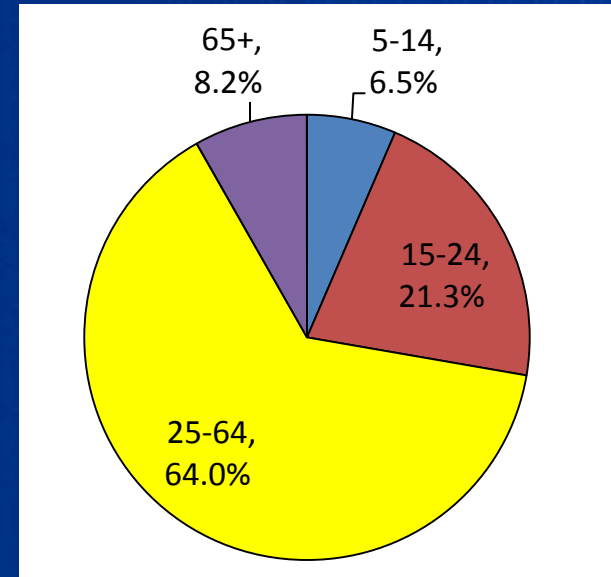


# Transit and Elderly

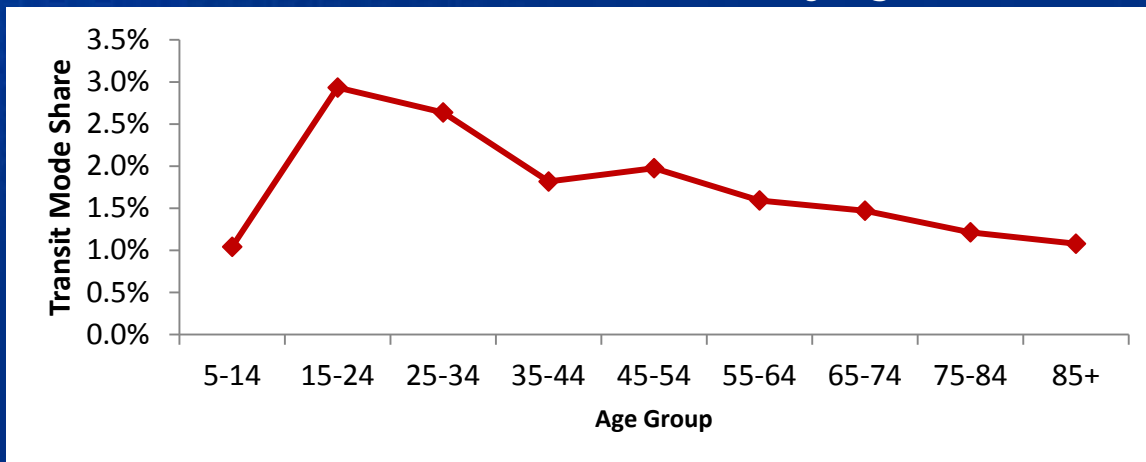
## Person Trips per Day by Age



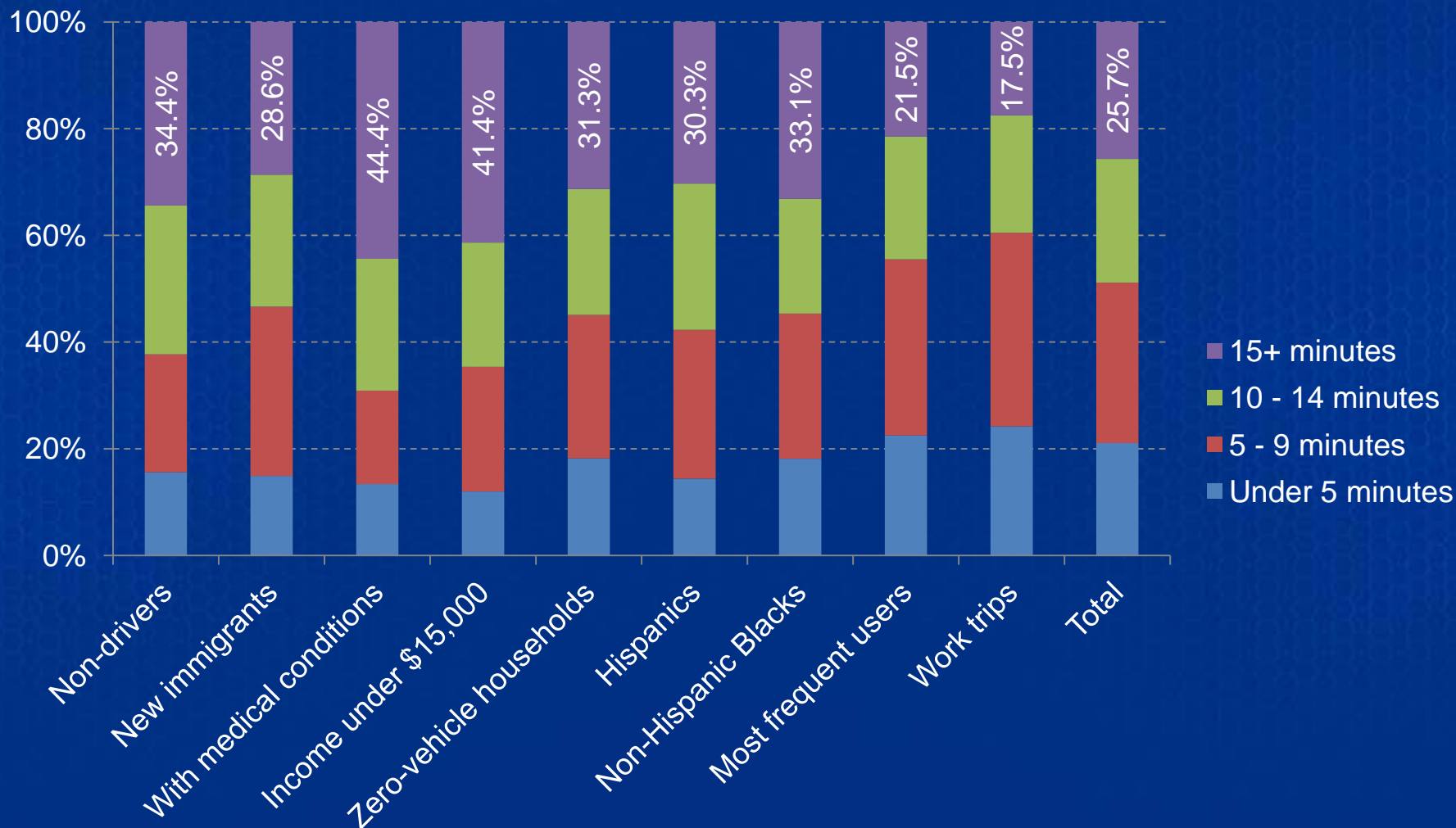
## Share of Transit Trips by Age Groups



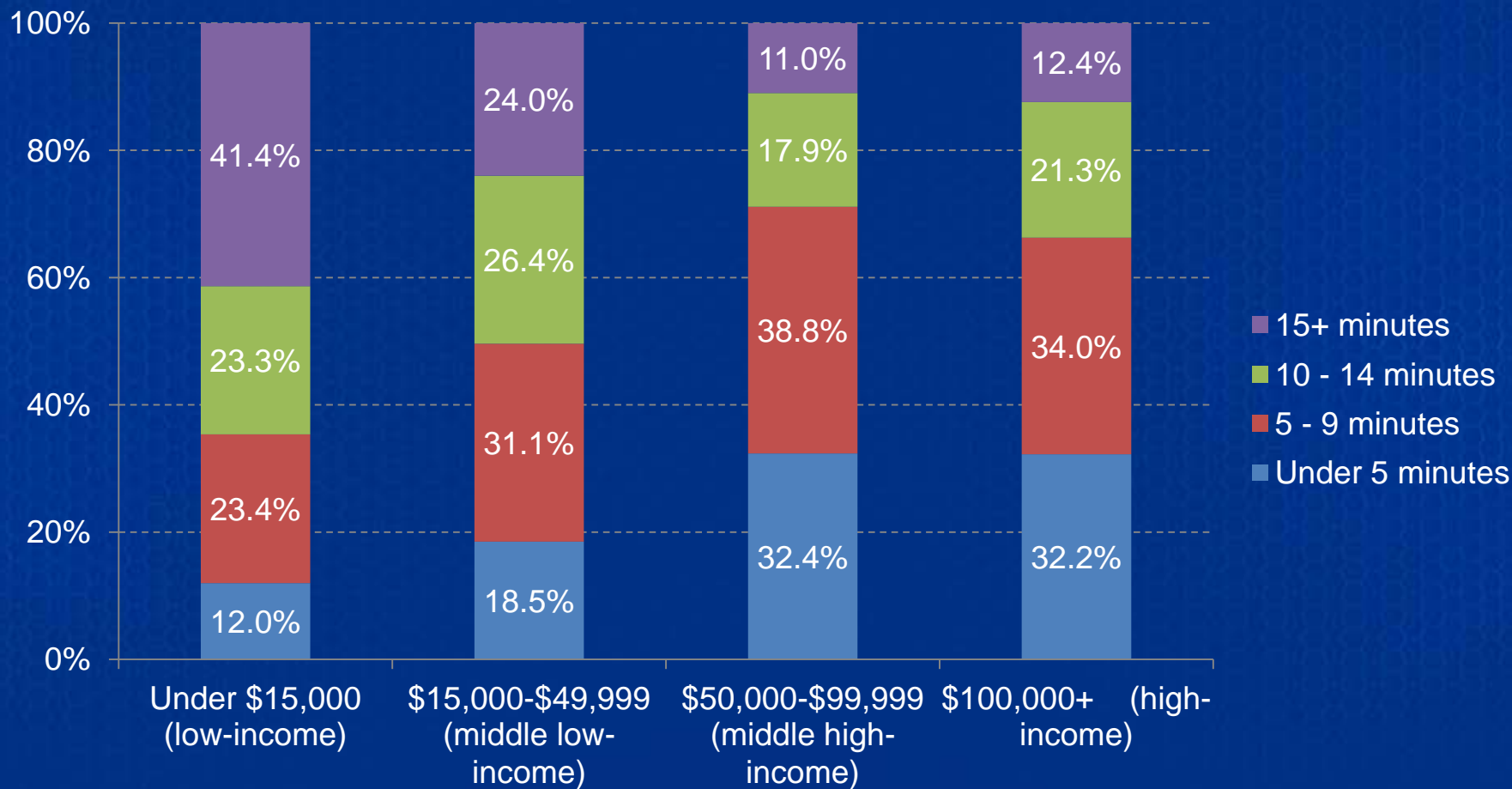
## Transit Mode Share by Age



# Distribution of Transit Trips by Wait Time for Selected Transit Markets

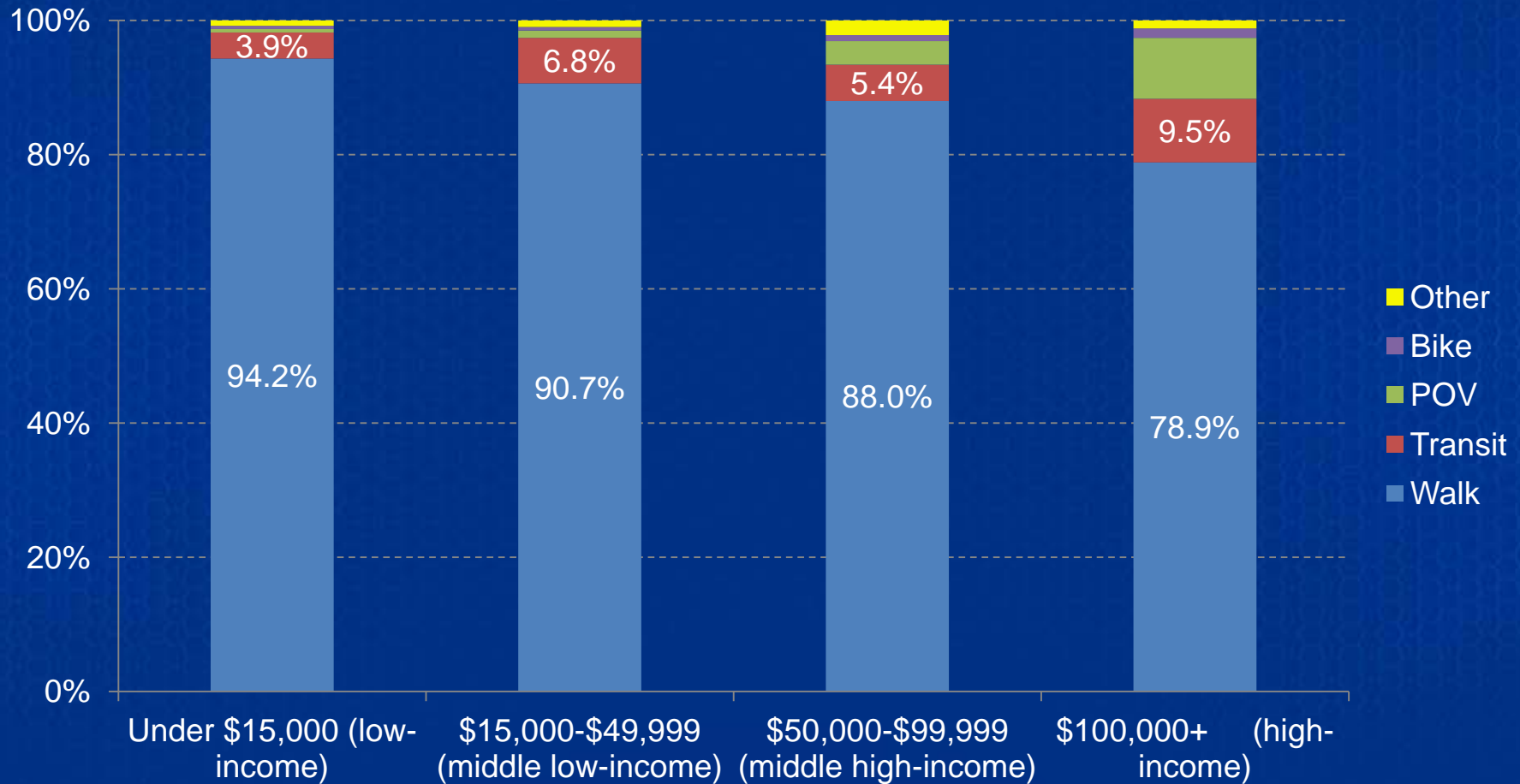


# Distribution of Transit Trips by Wait Time for Income-Based Markets

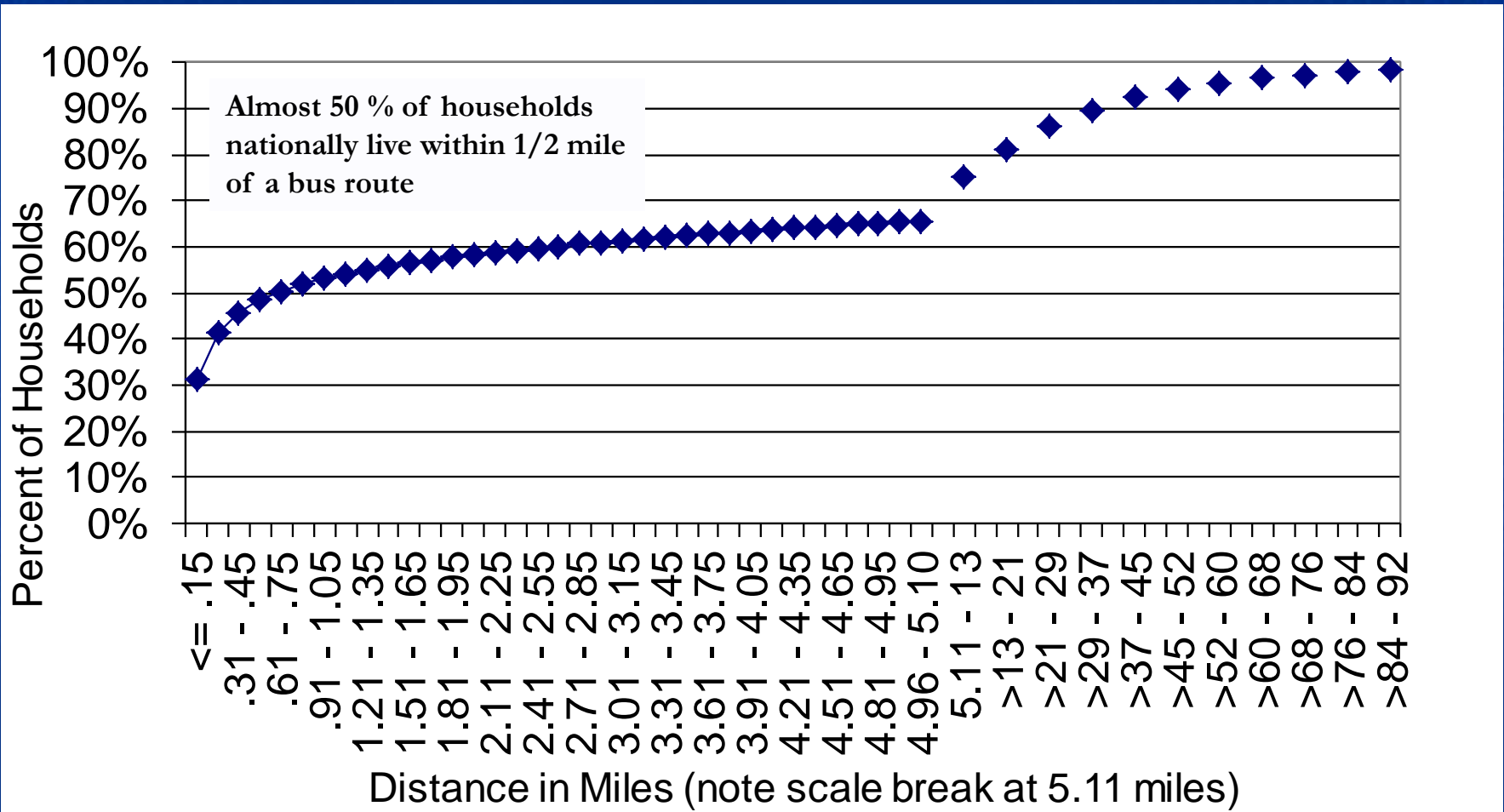




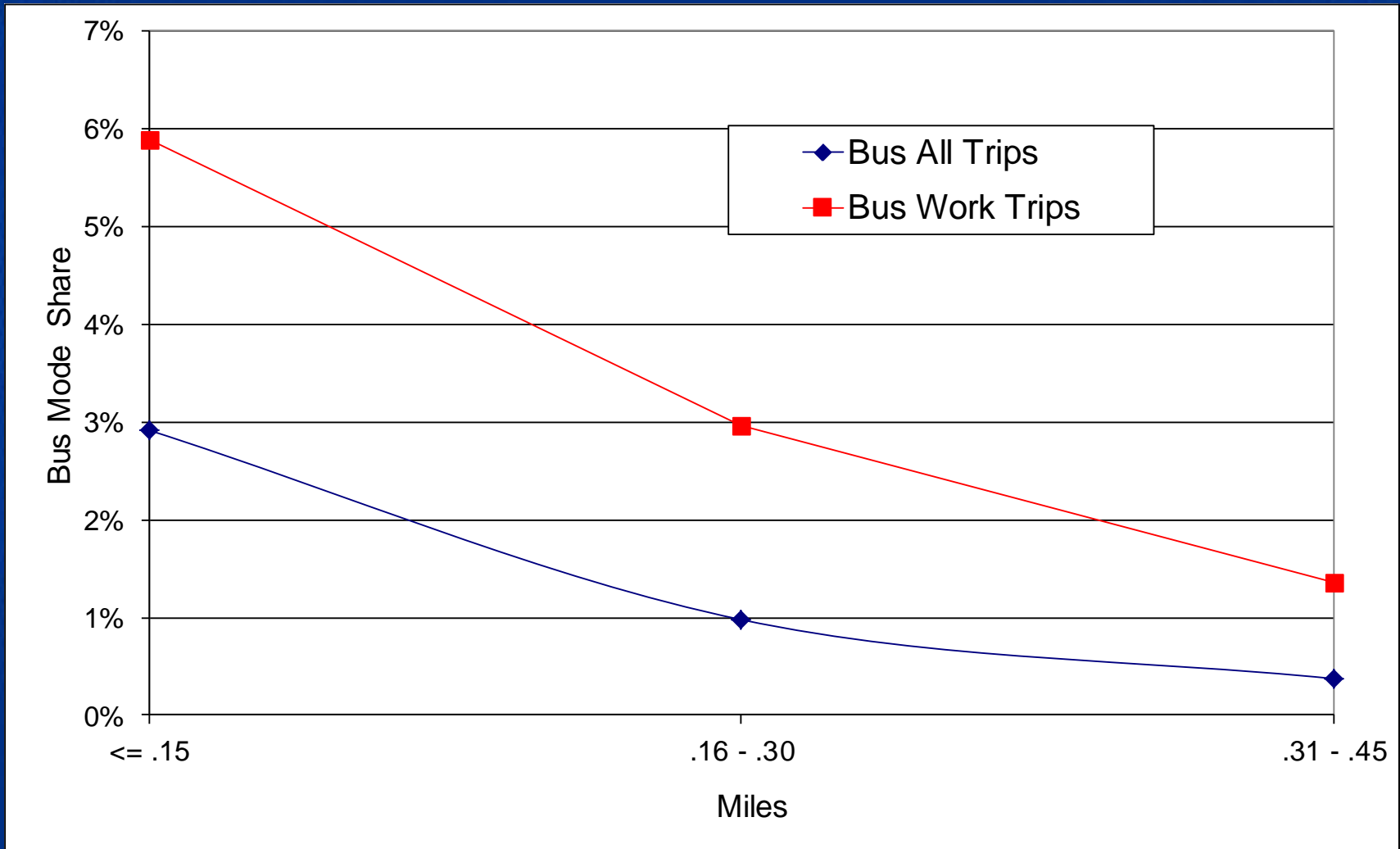
# Distribution of Transit Trips by Last Access Mode for Income-Based Markets



# Cumulative Distance of Household to Bus Route



# Bus trip Mode Share by Household Distance



# NHTS - A FIX FOR DATA ADDICTS AND INOCULATION AGAINST UNINFORMED DECISIONS



**Thank  
You**