

Leading Management Practices in Determining Funding Levels for Maintenance & Preservation

NCHRP DOMESTIC SCAN 14-01

CONDUCTED UNDER NCHRP 20-68A, US DOMESTIC SCAN PROGRAM

Agenda

- Scan Overview
- Findings
- Recommendations



Scan Objective

- Identify funding allocation practices that have successfully ensured reliable, adequate funding to support the delivery of efficient and effective maintenance programs



The Scan Explored How...

- Funding levels are determined
- Funds are allocated to districts and regions
- Districts and regions determine the amount to spend on specific maintenance tasks
- Agencies determine optimal allocations
- Performance measures are used to allocate funds

Scan Team

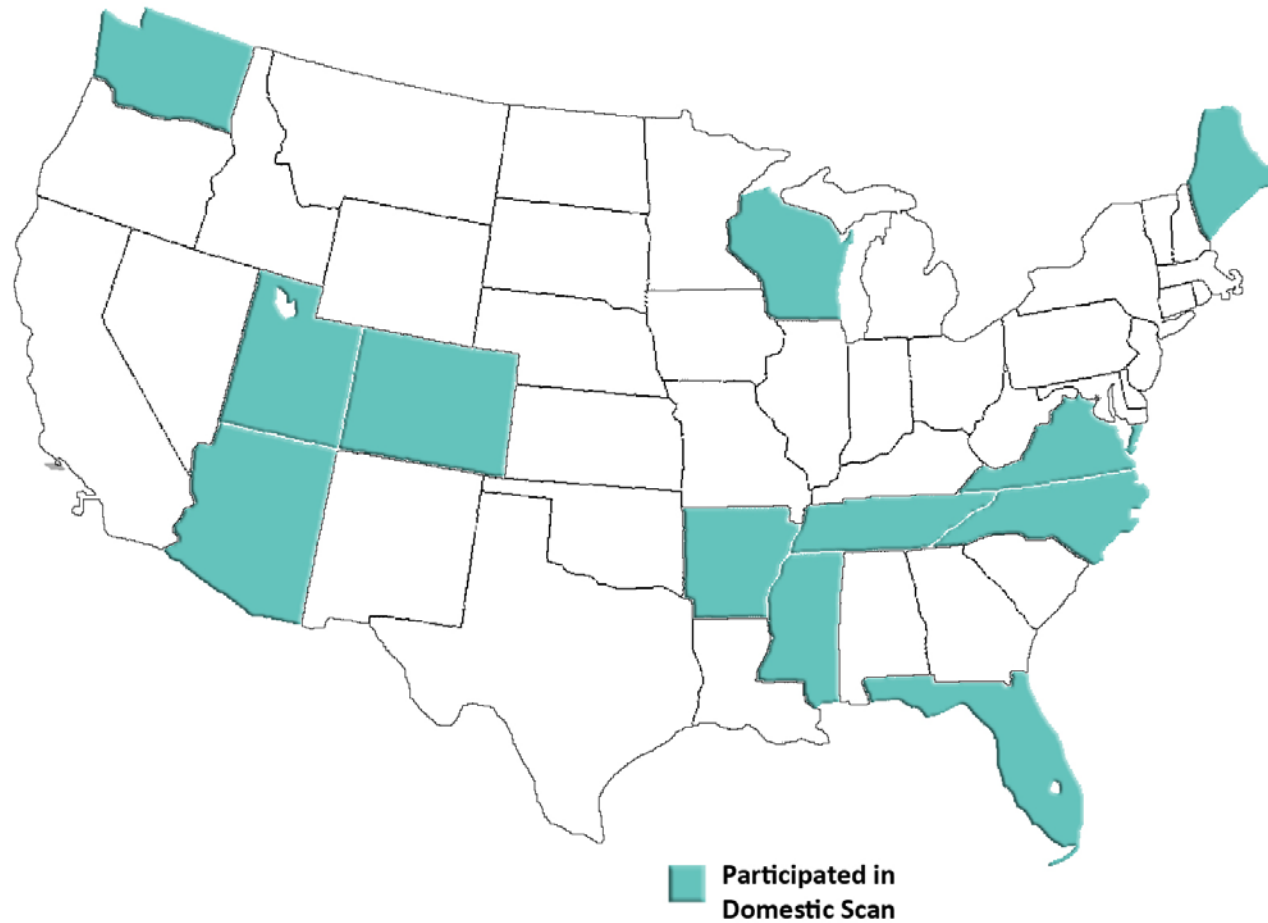
- **Mark McConnell**, MS DOT, Chair
- **Dale Doughty**, Me DOT
- **Tim Lattner**, FL DOT
- **Laura Mester**, MI DOT
- **Cory Pope**, UT DOT
- **Lonnie Watkins**, NC DOT
- **Tony Sullivan**, AR Highway and Transportation Department
- **Thomas Van**, FHWA
- **Katie Zimmerman**, APTech, SME



Scan Approach

Category 1 States	Features
Florida DOT	Adequately funded to address maintenance needs
Utah DOT Washington State DOT	Use maintenance performance data to determine maintenance funding at the state level

Scan Participants



Organization of Initial Findings

- Agency culture
- Relationship with elected officials
- Performance measures and targets
- Data
- Program support



Photo provided by the NCDOT

Findings – Agency Culture

- Everyone is on board
- Agency personnel can explain agency goals and priorities
- Maintenance has a place at the table to set funding levels
- Personnel are held accountable for meeting objectives
- Data drives decisions

Findings – Relationship with Elected Officials

- Several agencies have established a strong relationship with elected officials based on trust in agency decisions

State	Example
FL	Statute states that maintenance must be fully funded to meet performance targets DOT has a government liaison position in each district
UT	Project-selection is left to the DOT






Findings – Performance Measures and Targets

- Performance measures and targets are needed to link investments with results
- Performance targets should be achievable with available funding and resources



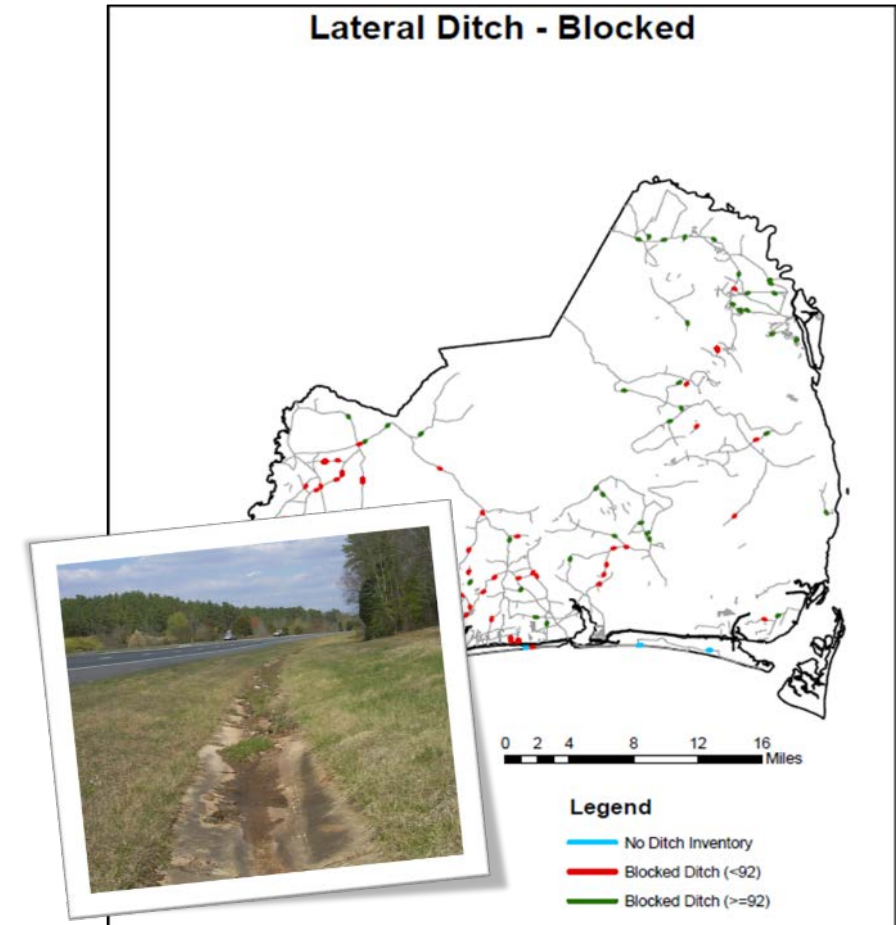
Findings – Data

- Degree to which data is used to make investment decisions is strongly related to the degree of confidence in the data
- Several agencies have initiated efforts to streamline their data collection efforts

Illustrations	LOS
LOS A 	A
LOS B 	B
LOS C 	C
LOS D 	D
Living Snow Fence 	F

Findings – Program Support

- Performance-based organizations have:
 - Established business processes
 - Implemented software tools
 - Used available resources creatively to support their programs



Recommendations

1. Establish performance measures and targets that drive the development of a unified agency culture
2. After establishing agency performance measures & targets, allow regions & districts flexibility in planning work activities
3. Develop customer-driven targets to convey need and achievable targets for accountability
4. Develop national guidance on data quality, governance, and utilization

Implementation Activities – Dissemination

- Post products
- Webinars
- Presentations
- Technology showcase



Implementation Activities – Advance Practice

- Peer exchange
- Maintenance performance information clearinghouse
- Guides for sharing findings, such as a legislator's guide or a guide on maintenance data collection
- Research statement on data quality, governance, and utilization guidance
- Research statement that leads to parameters for an external process review of maintenance activities

For More Information

- Please visit U.S. Domestic Scan program TRB webpage
<http://apps.trb.org/cmsfeed/TRBNetProjectDisplay.asp?ProjectID=1570>
- Visit U.S. Domestic Scan Program Website
www.domesticscan.org
- Google NCHRP Domestic Scan Program and look for scan 14-01



Sponsored By:

National Cooperative Highway Research Program (NCHRP)

In Cooperation With:

American Association of State Highway and Transportation Officials
Federal Highway Administration

October 2015