

*The National Academies of*  
SCIENCES • ENGINEERING • MEDICINE

TRANSPORTATION RESEARCH BOARD

# **An Integrated Approach to Managing Regulatory Compliance**

**Tuesday, July 25, 2017  
2:00pm to 3:30pm ET**

# Purpose

Discuss [ACRP Report 156](#): Guidebook for Managing Compliance with Federal Regulations: An Integrated Approach.

## Learning Objectives

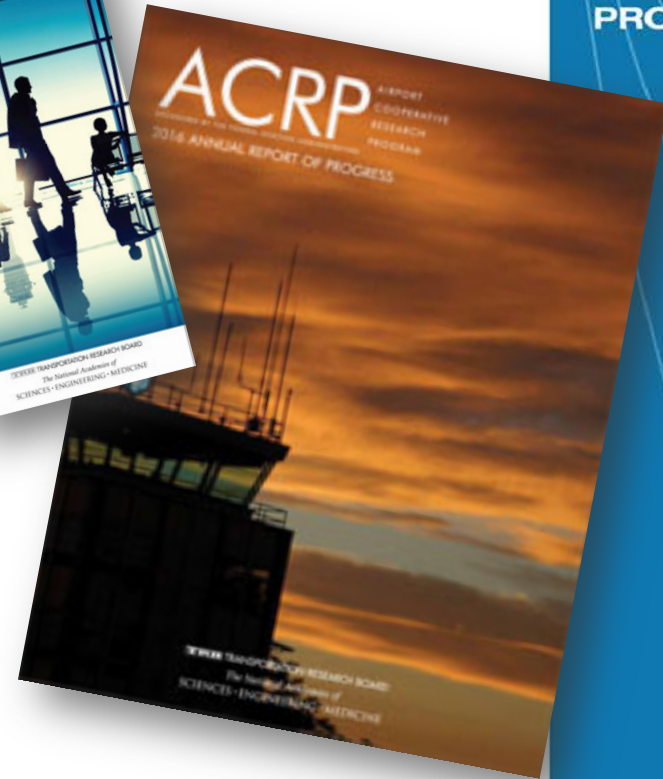
At the end of this webinar, you will be able to:

- Understand the value of and process associated with developing and implementing a CMS
- Understand how to use the RCM Tool to identify applicable federal regulations, generate educational Quick Reference Guides that provide essential need-to-know information on the regulations, and output compliance Master Schedules that show the upcoming compliance due dates



# ACRP is an Industry-Driven Program

- ✈ Managed by TRB and sponsored by the Federal Aviation Administration (FAA).
- ✈ Seeks out the latest issues facing the airport industry.
- ✈ Conducts research to find solutions.
- ✈ Publishes and disseminates research results through free publications and webinars.



# ACRP

AIRPORT  
COOPERATIVE  
RESEARCH  
PROGRAM

# Opportunities to Get Involved!

- ✈️ ACRP's Champion program is designed to help early- to mid-career, young professionals grow and excel within the airport industry.
- ✈️ Airport industry executives sponsor promising young professionals within their organizations to become ACRP Champions.
- ✈️ Visit ACRP's website to learn more.



**ACRP**

AIRPORT  
COOPERATIVE  
RESEARCH  
PROGRAM

# Upcoming ACRP Webinars

**August 10<sup>th</sup>**

Financially Responsible Procurement  
Processes for Airports

**September 12<sup>th</sup>**

Use and Potential Impacts of AFFF Containing  
Per- and Polyfluoroalkyl Substances (PFASs)

**September 14<sup>th</sup>**

Understanding Stormwater Management  
Requirements for Airports

**ACRP**

AIRPORT  
COOPERATIVE  
RESEARCH  
PROGRAM



# Additional ACRP Publications Available on this Topic

**Report 90:** The Impact of Regulatory Compliance Costs on Small Airports

**Legal Research Digest 7:** Airport Governance and Ownership

**Legal Research Digest 17:** State and Federal Regulations That May Affect Initiatives to Reduce Airports' GHG Emissions

**Legal Research Digest 23:** A Guide for Compliance with Grant Agreement Obligations to Provide Reasonable Access to an AIP-Funded Public Use General Aviation Airport

**ACRP**

AIRPORT  
COOPERATIVE  
RESEARCH  
PROGRAM

# Today's Speakers

**Jeff Kohlman and David Benner**

Aviation Management Consulting Group

**Presenting ACRP Report 156**

*Guidebook for Managing Compliance with  
Federal Regulations: An Integrated Approach*

**ACRP**

AIRPORT  
COOPERATIVE  
RESEARCH  
PROGRAM





# ACRP Report 156: A Guidebook for Managing Compliance with Federal Regulations: An Integrated Approach

**Aviation Management Consulting Group**

Jeff A. Kohlman, Managing Principal  
David Benner, Managing Consultant

**ACRP**

AIRPORT  
COOPERATIVE  
RESEARCH  
PROGRAM





# Team Members

Aviation Management Consulting Group (AMCG)

Bennett Aviation Consulting

ADP Airport Consulting

Leading Edge Strategies

2G Environmental

EA Engineering, Science, and Technology

**ACRP**

**AIRPORT  
COOPERATIVE  
RESEARCH  
PROGRAM**



# Aviation Management Consulting Group *Services*

- Provide a wide range of aviation management consulting services to...
  - Airports
  - Fixed Base Operators (FBOs)
  - Specialized Aviation Service Operators (SASOs)
  - Others having an interest in the General Aviation segment of the industry

**ACRP**

AIRPORT  
COOPERATIVE  
RESEARCH  
PROGRAM



# Aviation Management Consulting Group *Services*

**ACRP**

AIRPORT  
COOPERATIVE  
RESEARCH  
PROGRAM

- Airports
  - Strategic business planning/plans
  - Operational, managerial, and financial assessments
  - Market assessments and feasibility studies
  - Primary Management and Compliance Documents
  - Airport Sponsor Assurances and regulatory compliance
  - Rent and fee studies (as well as appraisals)
  - Lease, use, and operating agreements (including TTF)
  - RFI/RFQ/RFP development, evaluation, and selection
  - Valuations, acquisitions, divestiture, and due diligence
  - Land use, site planning, and facility programming

# Jeff Kohlman Principal Investigator

- Founding principal of AMCG
- Bachelor in Aviation Business Administration from Embry-Riddle Aeronautical University
- Instrument rated private pilot and aircraft owner



**ACRP**

AIRPORT  
COOPERATIVE  
RESEARCH  
PROGRAM

# David Benner Researcher

- MBA in Aviation from Embry-Riddle Aeronautical University
- Commercial pilot with instrument and multi-engine ratings
- Certified Flight Instructor
- Certified Member (CM) of American Association of Airport Executives



# ACRP

AIRPORT  
COOPERATIVE  
RESEARCH  
PROGRAM

# ACRP Oversight Panel

Joshua D Abramson, C.M., Easterwood Airport

Megan M. Atkins, Columbia Metropolitan Airport

Sarah J. Demory, City of Boise

David J. Full, Reynolds, Smith, and Hills

Stephen M. Quilty, SMQ Airport Services

Paul James Eubanks, Airports Council International-NA Liaison

Christine Gerencher, TRB Liaison

Marci A. Greenberger, ACRP Senior Program Officer

# ACRP

AIRPORT  
COOPERATIVE  
RESEARCH  
PROGRAM

# Webinar Outline

- Historical Issue
- Problem Statement
- Purpose
- Introduction and Research Plan
- Compliance Management System (CMS)
- RCM Tool Instructions
- RCM Tool Implementation

**ACRP**

AIRPORT  
COOPERATIVE  
RESEARCH  
PROGRAM





## Historical Issue

- Compliance with regulations at federally obligated airports accomplished within each functional area
  - Little to no collaboration with other functional areas
  - Compliance accomplished in a silo
- Independent pursuit of compliance can lead to duplication of effort and redundancy
- Results are inefficient and not cost-effective

## Problem Statement

- Airports required to comply with many regulations
  - Varying federal agencies (e.g., FAA, TSA, DOT, etc.)
  - Varying applicable regulations (e.g., 14 CFR Part 139)
  - Varying required elements (e.g., inspection, training, etc.)
  - Varying time periods (annually, triggering event, etc.)
- Can result in plans and compliance requirements implemented in silos and duplication of effort
- No guidance for airports to integrate plans, policies, and procedures with a more consistent approach for implementation and more efficient use of limited resources

## Purpose

- Provides reasons for, value of, and best practices associated with a Compliance Management System (CMS)
- Provides guidance on managing compliance with federal regulations pertaining to planning, development, operation and management of federally obligated airports
- Regulation Compliance Management (RCM) Tool provides index of applicable compliance requirements
- RCM Tool designed to:
  - Track compliance
  - Allow addition of state and local regulations/requirements
  - Update federal regulations/requirements

*Helps management and staff work together to ensure compliance in an efficient manner*

# Introduction and Research Plan Design

# ACRP

AIRPORT  
COOPERATIVE  
RESEARCH  
PROGRAM

- Designed to help airport management and staff:
  - Identify U.S. statutes, regulations, executive orders, and OMB circulars that affect aviation/airside infrastructure, facilities, and activities of federally obligated airports
  - Provide methods and techniques to integrate resources, plans, and procedures for managing compliance with applicable federal regulations
  - Assist with tracking and managing compliance with applicable federal regulations

*Statutes are laws enacted by Congress. Statutes with continuing effect are generally codified in the United States Code (USC).*

*Regulations are the rules issued by the executive branch departments and agencies of the federal government and codified in the Code of Federal Regulations (CFR).*

*Executive Orders are directives of the President of the United States to officers and agencies of the executive branch for management of agency operations, and have the full force of law.*

*OMB Circulars are instructions, information, and/or policies adopted by OMB (an executive branch office) for executive branch departments and agencies.*

# Introduction and Research Plan

## *Research Plan*

- Comprehensive literature review of industry and non-industry CMSs and related resources
- Identification of applicable federal regulations (U.S. statutes, regulations, executive orders, and OMB circulars)
- Interviews with airports and/or airport sponsors on the systems and/or resources developed, implemented, and referenced by management and staff to track and manage compliance

**ACRP**

AIRPORT  
COOPERATIVE  
RESEARCH  
PROGRAM

# Introduction and Research Plan

## *Research Results*

**ACRP**

**AIRPORT  
COOPERATIVE  
RESEARCH  
PROGRAM**

- Literature Review
  - Limited number of industry/non-industry CMSs and tools
  - Majority of existing tools focused on safety, security, environmental, 14 CFR Part 139, and Assurances
- Applicable federal regulations
  - More than 60 primary and 339 secondary regulations
  - 17 primary and 21 secondary statues, executive orders, and OMB circulars
- Interviews
  - Most airports do not have a CMS or federal RCM tool
  - Non-compliance addressed after inspection

# Introduction and Research Plan

## *Applicable Federal Regulations*

- 17 federal departments, agencies, and offices

CBP

USDA

DOD

DHS

HUD

DOI

DOJ

DOL

DOT

EPA

FAA

FCC

GSA

ICE

OSHA

OMB

TSA

# ACRP

AIRPORT  
COOPERATIVE  
RESEARCH  
PROGRAM





# Compliance Management System (CMS)

## *Definition and Focus Elements*

- Definition
  - Comprehensive system consisting of a policy; management and oversight plan; goals, objectives, and action plans; and tools and resources
- Focus elements
  - Reduce and manage risk
  - Ensure and improve health and safety of all employees and users of the airport
  - Protect the environment
  - Improve the financial well-being of the airport

**ACRP**

AIRPORT  
COOPERATIVE  
RESEARCH  
PROGRAM

# Compliance Management System (CMS)

## *Reason for a CMS*



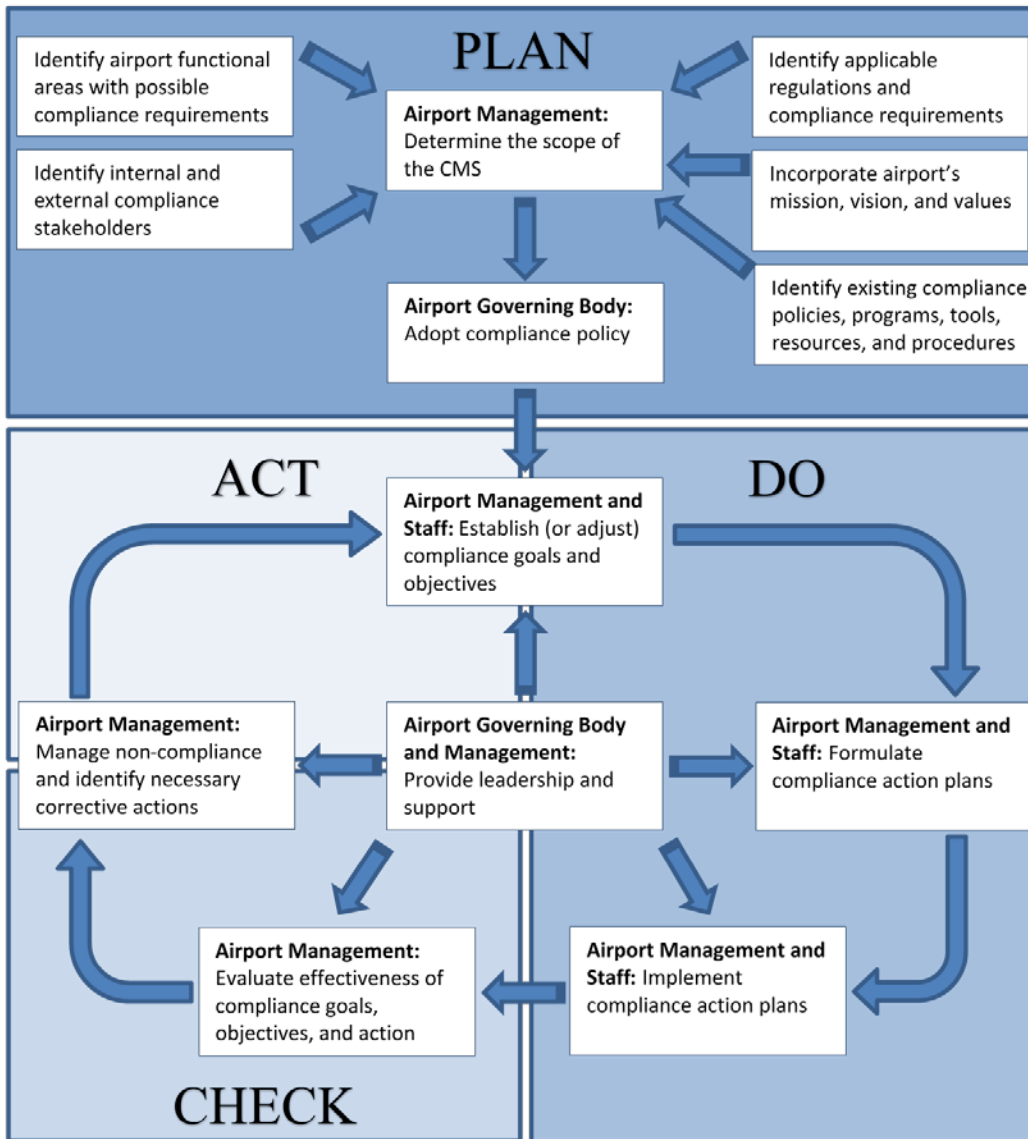
- Risks of non-compliance are significant
- Compliance is mandatory
  - Airport Sponsor Assurance #1 – “comply with all applicable Federal laws, regulations, executive orders, policies, guidelines, and requirements as they relate to the application, acceptance and use of Federal funds.”

## Compliance Management System (CMS) *Value of a CMS*

- As a planning tool



- Also as a management and communications tool
- Resolves age-old inefficient silo-effect approach
- Lowers cost of compliance



# Compliance Management System (CMS)

## *Elements of a CMS*

- Policy
  - Reason, value, and clear expectations
- Management and Oversight Plan
  - Formal plan with designated CMS compliance manager
- Goals, Objectives, and Action Plans
  - Similar to those of an airport business plan (Report 77)
- Compliance Management Tools and Resources
  - RCM Tool, Quick Reference Guides, and Master Schedules

**ACRP**

AIRPORT  
COOPERATIVE  
RESEARCH  
PROGRAM

# RCM Tool Instructions

## *Design Overview*

- Designed to help airport management and staff with:
  - Identifying applicable federal regulations
  - Answer frequently asked questions
  - Provide supplemental resources
  - Identify additional compliance guidance
  - Generate educational Quick Reference Guides
  - Output compliance Master Schedules

**ACRP**

**AIRPORT  
COOPERATIVE  
RESEARCH  
PROGRAM**



# RCM Tool Instructions

## *Design Benefits*

**ACRP**

AIRPORT  
COOPERATIVE  
RESEARCH  
PROGRAM

- RCM Tool design provides:
  - Identification of associated compliance requirements and associated frequencies
  - Identification of commonalities among the compliance requirements
  - Identification of opportunities for inherent synergies
  - Identification of compliance impacts to functional areas
  - Addition and modification of federal, state, or local regulations as well as airport specific information
  - Creation of filtering capabilities

*Flexibility ensures RCM Tool remains specific and relevant*





# RCM Tool Instructions

## Education Quick Reference Guides

- Provides essential need-to-know information that can be consulted in the field based on RCM Tool
  - Brief summary of the regulation subject matter
  - Frequently asked questions
  - Identification of other associated regulations and resources

Quick Reference Guide 11/28/2015

Quick Reference Guide			
Agency:	Federal Aviation Administration	Station:	1339-323 (a)
Part Number/Title:	14 CFR Part 139 - Certification of Airports		
Section Name:	Traffic and Wind Direction Indicators		
Summary:	This section describes the requirements that a primary wind cone must be installed at the airport and that supplemental wind cones must be installed at the end of each runway available for air carrier use.		
Compliance Requirement	Type:	Condition	
	Action:	Equipment	
Frequency	Type:	Periodic	
	Interval or Event:	Annually	
<b>Impacts (on other functional areas/responsible departments):</b>			
Development	Operations	Management	Inspection
Planning	Yes	Administration	No
Engineering	No	Legal	No
Construction	No	Financial/Accounting	No
	Yes	Risk Management	No
	No	General Aviation	Yes
	No	Land Use	No
<b>Key Guidance:</b>			
SMS	No	Yes	14 CFR Part 139
Notes	Yes	Sponsor Assurances	Yes

C:\Users\kswanson\Desktop\ Page 1 of 2

Quick Reference Guide 11/28/2015

Quick Reference Guide	
Agency:	Federal Aviation Administration
Part Number/Title:	14 CFR Part 139 - Certification of Airports
Section Name:	Traffic and Wind Direction Indicators
<b>Frequently Asked Questions:</b>	
When is it required to have a segmented circle installed with a wind cone?	For each runway with a right hand traffic pattern and for airports serving any air carrier operation.
N/A	N/A
N/A	N/A
<b>References</b>	
<b>Other Regulations)</b>	
Airport Sponsor Assurances	
14 CFR Part 139	
FAA Order 5260.5c Airport Certification Program Handbook	
<b>Other Agency Resources</b>	
FAA Order 5190.617 FAA Airport Compliance Manual	
AC 150/5345-27E Specifications for Wind Cone Assemblies	
N/A	
<b>Other Resources</b>	
AC 150/5200-18C Airport Safety Self-Inspection	
N/A	

C:\Users\kswanson\Desktop\ Page 2 of 2

# RCM Tool Instructions

## *Compliance Master Schedules*

- Regulations with a specific compliance due date based on RCM Tool
  - Visual representation of upcoming compliance due dates based on filters
  - Organized in a linear and sequential manner
  - Identification of individuals responsible for compliance

Master Schedule.pdf 12/28/2015

Master Schedule	
Compliance Due Date: 3/5/2016	<input type="checkbox"/> Assigned To:
	Development: No
Citation: §139.323 (a)	Operations: Yes
	Management: No
	Properties: Yes
Part Number/Title: 14 CFR Part 139 - Certification of Airports	
Section Name: Traffic and Wind Direction Indicators	
Notes	

## RCM Tool Instructions

### *Airport Functional Areas*

- RCM Tool identifies:
  - Impacts to common airport functional areas
  - Identification of key guidance elements

Development	Operations	Management	Properties	Key Guidance
Planning	Airside	Governance	Airside	Safety Mgmt System (SMS)
Engineering	Landside	Administration	Landside	Emergency Mgmt System (EMS)
Construction	Environmental	Legal	Airlines	Sponsor Assurances
	Safety/Security	Finance/Accounting	Concessions	14 CFR Part 139
	Maintenance	Risk Management	General Aviation	
			Land Use	

# RCM Tool Instructions

## *RCM Tool Overview*

- Approximately 440 primary and secondary federal regulations
- RCM Tool consists of 5 tabs
  - Home
  - Regulations
  - Master Schedule
  - Manage Regulations
  - Lists

**ACRP**

AIRPORT  
COOPERATIVE  
RESEARCH  
PROGRAM



# RCM Tool Instructions

## *Home Tab Overview*

- Provides additional instructions to explain process
- Ensures differentiation between airports based on three major factors:
  - 14 CFR Part 139 (Certification of Airports)
  - 29 CFR Part 1910 (Occupational Safety and Health Standards)
  - 49 CFR Part 1542 (Airport Security)
- Ability to filter regulations by specific user filter criteria

**ACRP**

AIRPORT  
COOPERATIVE  
RESEARCH  
PROGRAM



**INSTRUCTIONS**

**Step 1:** The Regulation Compliance Management Tool (RCM Tool) is designed to filter federal regulations for airports with different attributes based on three major factors - compliance with 14 CFR Part 139 (Certification of Airports), 29 CFR Part 1910 (Occupational Safety and Health Standards), and 49 CFR Part 1542 (Airport Security). To ensure the RCM Tool is representative of the compliance requirements appropriate for the airport, please select the applicable dropdown choice for the *Initial Filters* on this Home tab.

**Step 2:** The results for the Regulations tab, Master Schedule tab, or Quick Reference Guide output can be further customized by using the Filter Options on this Home tab. To filter the results, select the desired filters from the drop down lists in the Filter Values column for the desired Filter Option by clicking on the down arrow at the right end of the Filter Values field. After the Filter Values are selected, click on the Regulations tab at the bottom of this Home tab or click the applicable button to update the Master Schedule tab or Quick Reference Guide output. A Filter Value does not need to be selected for every Filter Option (e.g., the regulations will still be filtered with one or more blank Filter Values below).

**Step 3:** The ACRP Guidebook for Managing Compliance with Federal Regulations: An Integrated Approach (Guidebook) can be accessed by clicking on the link [ACRP Publications Website](#) below. This Guidebook gives specific instructions on how to use the RCM Tool along with guidance for airport management and staff to manage compliance with applicable federal regulations.

To remove a previously selected filter, click the [Reset Filter Values](#) button below.

**CAUTION:** To facilitate additional functionality of the RCM Tool, the Lists tab is editable to allow for the insertion (and subsequent editing and deleting) of additional list items. Therefore, users must take caution to not inadvertently modify or delete data that may impact the overall functionality of the RCM Tool.

[ACRP Publications Website](#)

**INITIAL FILTER 14 CFR Part 139**

**INITIAL FILTER 29 CFR Part 1910**

**INITIAL FILTER 49 CFR Part 1542**

FILTER OPTIONS	FILTER VALUES (One or More)
Type	
Department, Agency, or Office	
Part Number/Title	
Compliance Requirement Type	
Frequency Type	
User Specific Sorting	
Development	
Operations	
Management	
Properties	
SMS	
EMS	
Sponsor Assurances	
14 CFR Part 139	
Compliance Due Date Calendar Year	

\*See NOTE b

\*See NOTE b

[Reset Filter Values](#)   [Generate Master Schedule](#)   [Generate Quick Reference Guide](#)    Prompt for directory to store Quick Reference Guide

Path to save Quick Reference Guide: \_\_\_\_\_  
 File name for Quick Reference Guide: \_\_\_\_\_

\*NOTE: User Specific Sorting and Compliance Due Date Calendar Year are dependent on the information input by the user on the *Manage Regulations* tab.

Home   Regulations   Master Schedule   Manage Regulations   Lists

Step 1

Step 2

# ACRP

## AIRPORT COOPERATIVE RESEARCH PROGRAM

\*See NOTE b

\*See NOTE b





# ACRP

## AIRPORT COOPERATIVE RESEARCH PROGRAM

**INSTRUCTIONS**

**Step 1:** The Regulation Compliance Management Tool (RCM Tool) is designed to filter federal regulations for airports with different attributes based on three major factors - compliance with 14 CFR Part 139 (Certification of Airports), 29 CFR Part 1910 (Occupational Safety and Health Standards), and 49 CFR Part 1542 (Airport Security). To ensure the RCM Tool is representative of the compliance requirements appropriate for the airport, please select the applicable dropdown choice for the *Initial Filters* on this Home tab.

**Step 2:** The results for the Regulations tab, Master Schedule tab, or Quick Reference Guide output can be further customized by using the Filter Options on this Home tab. To filter the results, select the desired filters from the drop down lists in the Filter Values column for the desired Filter Option by clicking on the down arrow at the right end of the Filter Values field. After the Filter Values are selected, click on the Regulations tab at the bottom of this Home tab or click the applicable button to update the Master Schedule tab or Quick Reference Guide output. A Filter Value does not need to be selected for every Filter Option (e.g., the regulations will still be filtered with one or more blank Filter Values below).

**Step 3:** The ACRP Guidebook for Managing Compliance with Federal Regulations: An Integrated Approach (Guidebook) can be accessed by clicking on the link [ACRP Publications Website](#) below. This Guidebook gives specific instructions on how to use the RCM Tool along with guidance for airport management and staff to manage compliance with applicable federal regulations.

To remove a previously selected filter, click the [Reset Filter Values](#) button below.

**CAUTION:** To facilitate additional functionality of the RCM Tool, the Lists tab is editable to allow for the insertion (and subsequent editing and deleting) of additional list items. Therefore, users must take caution to not inadvertently modify or delete data that may impact the overall functionality of the RCM Tool.

[ACRP Publications Website](#)

**INITIAL FILTER 14 CFR Part 139**

**INITIAL FILTER 29 CFR Part 1910**

**INITIAL FILTER 49 CFR Part 1542**

FILTER OPTIONS	FILTER VALUES (One or More)
Type	
Department, Agency, or Office	
Part Number/Title	
Compliance Requirement Type	
Frequency Type	
User Specific Sorting	
Development	
Operations	
Management	
Properties	
SMS	
EMS	
Sponsor	
14 CFR Part	
Compliance Due Date Calendar Year	

*\*See NOTE below*

*\*See NOTE below*

[Reset Filter Values](#)   [Generate Master Schedule](#)   [Generate Quick Reference Guide](#)    Prompt for directory to store Quick Reference Guide

Path to save Quick Reference Guide: \_\_\_\_\_  
 File name for Quick Reference Guide: \_\_\_\_\_

**\*NOTE:** User Specific Sorting and Compliance Due Date Calendar Year are dependent on the information input by the user on the *Manage Regulations* tab.

Home   Regulations   Master Schedule   Manage Regulations   Lists

Step 1

Step 2

\*See NOTE b

\*See NOTE b





	A	B	C	D	E	F	G	H
	Type	Department, Agency, or Office	Part Number/Title	Citation	Section Name	Summary	Compliance Requirement Type	Action
1	Federal	DA	7 CFR Part 1792 - Compliance With Other Federal Statutes, Regulations, and Executive Orders	<a href="#">§1792.104 (a)</a>	Seismic Acknowledgments	This section describes that borrowers or grant recipients must provide Rural Utilities Services (RUS) a written acknowledgment from a registered engineer responsible for the building design stating that seismic provisions pursuant to part 1792.103 will be used in the design of the building.	Document	Report
2	Federal	DA	7 CFR Part 799 - Environmental Quality and Related Environmental Concerns - Compliance With The National Environmental Policy Act	<a href="#">§799.7 (a)</a>	Early Involvement in Private and State and Local Activities Requiring Federal Approval	This section describes the NEPA regulation requiring agencies to provide early involvement in actions, which when planned by other non-Federal entities, require some form of Federal involvement.	Document	Report
3	Federal	DHS	44 CFR Part 9 - Flood Plain Management and Protection of Wetlands	<a href="#">§9.15 (a) (b)</a>	Planning Programs Affecting Land Use	This section describes that the Federal agency shall take floodplain management into account when evaluating any water and land use plans. No plan may be approved unless it reflects consideration of flood hazards, floodplain management, wetland protection, and prescribes planning procedures to implement	Document	Manual
4	Federal	DHS	44 CFR Part 9 - Flood Plain Management and Protection of Wetlands	<a href="#">§9.2</a>	Policy	This section describes the policies, procedures and responsibilities that each agency shall take to minimize the destruction, loss or degradation of wetlands, and preserve the natural beneficial values of wetlands.	Document	Public
5	Federal	DHS	Exec. Order 12699	<a href="#">§12699</a>	Seismic Safety of Federal and Federally Assisted or Regulated New Building Construction	This section describes that in the design of a federally assisted building, the borrowers and grant recipients must utilize the seismic provisions of the most recent edition of those standards and practices.	Document	Report
6	Federal	DOD	32 CFR Part 644 - Real Estate Handbook	<a href="#">§644.111 -121</a>	Acquisition by Condemnation Proceedings	This section describes the procedures of the COE relating to the acquisition of real estate and interests by condemnation proceedings.	Document	Manual
7	Federal	DOD	32 CFR Part 644 - Real Estate Handbook	<a href="#">§644.21 (a)</a>	General	This section describes the procedures of the COE relating to real estate planning and project authorization for the acquisition of land and interests for military projects and other Federal agencies as required.	Document	Manual
8	Federal	DOD	32 CFR Part 644 - Real Estate Handbook	<a href="#">§644.423 (a-c)</a>	Airport Development	This section describes that once the Secretary of Transportation determines that any land owned or controlled by the United States is reasonably necessary for an airport development project, he shall file a request with the agency having control of the land that the property be conveyed to the public agency sponsoring the project.	Document	Manual
9								

# ACRP

## AIRPORT COOPERATIVE RESEARCH PROGRAM

Regulations Tab – Functional Areas

	N	O	P	Q	R	S	T	U	V	W	X	Y	Z	AA	AB	AC	AD	AE	AF	AG	AH	AI	AJ	AK
	Development	Planning	Engineering	Construction	Operations	Airside	Landside	Environmental	Safety/Security	Maintenance	Management	Governance	Administration	Legal	Finance/Accounting	Risk Management	Properties	Airside	Landside	Airlines	Concessions	General Aviation	Land Use	Key Guidance
1	Yes	Yes	Yes	No	No	No	No	No	No	No	Yes	No	Yes	No	No	No	No	No	No	No	No	No	No	Yes
2	Yes	Yes	No	No	Yes	No	No	Yes	No	No	Yes	No	Yes	Yes	No	No	Yes	No	No	No	No	No	Yes	Yes
3	Yes	Yes	No	No	Yes	No	No	Yes	No	No	Yes	No	Yes	Yes	No	No	Yes	No	No	No	No	No	Yes	Yes
4	Yes	Yes	No	No	Yes	No	No	Yes	No	No	Yes	No	Yes	Yes	No	No	Yes	No	No	No	No	No	Yes	Yes
5	Yes	Yes	Yes	Yes	No	No	No	No	No	No	Yes	No	Yes	No	No	No	No	No	No	No	No	No	No	Yes
6	Yes	Yes	No	No	Yes	No	No	Yes	No	No	Yes	Yes	Yes	Yes	No	No	No	No	No	No	No	No	No	Yes
7	Yes	Yes	No	No	Yes	No	No	Yes	No	No	Yes	Yes	Yes	Yes	No	No	No	No	No	No	No	No	No	Yes
8	Yes	Yes	No	No	No	No	No	No	No	No	Yes	Yes	Yes	Yes	No	No	No	No	No	No	No	No	No	Yes
9	Yes	Yes	No	No	No	No	No	No	No	No	Yes	Yes	Yes	Yes	No	No	No	No	No	No	No	No	No	Yes

# ACRP

## AIRPORT COOPERATIVE RESEARCH PROGRAM



The screenshot displays an Excel spreadsheet with three 'Master Schedule' entries. The second entry is selected, and a 'Save as PDF' dialog box is open over it. The dialog shows the path 'C:\Users\kswatson\Desktop' and the filename 'Master Schedule'. A blue arrow points to the 'Save as PDF' button.

Master Schedule	
Compliance Due Date: 1/14/2015	<input type="checkbox"/> Assigned To:
Citation: §112.3	Development: Yes
	Operations: Yes
	Management: Yes
	Properties: Yes
Part Number/Title: 40 CFR Part 112 - Oil Pollution Prevention	
Section Name: Requirement to Prepare a SPCC Plan	
Notes	

Master Schedule	
Compliance Due Date: 2/1/2015	<input type="checkbox"/> Assigned To:
Citation: §112.4	Development: Yes
	Operations: Yes
	Management: Yes
	Properties: Yes
Part Number/Title: 40 CFR Part 112 - Oil Pollution Prevention	
Section Name: Amendment of SPCC Plan by Regional Administrator	
Notes	

Master Schedule	
Compliance Due Date: 3/1/2015	<input type="checkbox"/> Assigned To:
Citation: §112.1	Development: Yes
	Operations: Yes
	Management: Yes
	Properties: Yes
Part Number/Title: 40 CFR Part 112 - Oil Pollution Prevention	
Section Name: General Applicability	
Notes	

Manage Regulations Tab – Add or Modify

1

2 **Add New** Clear **Modify Existing**

3 Step 1: Click button to Clear form below

4 Step 2: Enter values in Column B

5 Step 3: Click button to Update Update ← Step 1: Select Citation to Edit or Delete Update Delete ← Step 2: Make changes below in Column C Step 3: Click button to Update or Delete

6

7 Description	Add New and Modify Existing Values	Updates Entered Here
8 Type		
9 Department, Agency, or Office		
10 Part Number/Title		
11 Citation		
12 Citation Hyperlink		
13 Section Name		
14 Summary		
15 Compliance Requirement Type		
16 Action		
17 Action Details (if applicable)		
18 Frequency Type		
19 Interval or Event		
20 Interval or Event Details (if applicable)		
21 User Specific Sorting		
22 Development		
23 Planning		
24 Engineering		
25 Construction		
26 Operations		
27 Airside		
28 Landside		
29 Environmental		
30 Safety/Security		
31 Maintenance		
32 Management		
33 Governance		
34 Administration		
35 Legal		
36 Finance/Accounting		
37 Risk Management		
38 Properties		
39 Airside		
40 Landside		
41 Airlines		
42 Concessions		
43 General Aviation		
44 Land Use		
45 Key Guidance		
46 SMS		
47 EMS		
48 Sponsor Assurances		
49 14 CFR Part 139		
50 Assignment and Dates		
51 Assigned to		
52 Completion Date		
53 Compliance Due Date		

Ready | Home | Regulations | Master Schedule | **Manage Regulations** | Lists | 75%

# ACRP

AIRPORT  
COOPERATIVE  
RESEARCH  
PROGRAM



Manage Regulations Tab – Dependencies

Type	Department, Agency, or Office
Federal	DA
State	DHS
Local	DOD
	DOE
	DOI
	DOJ
	DOL
	DOT
	EPA
	FAA
	FCC
	FPM
	HUD
	OMB
	OPM
	OSHA
	TSA
	U.S.C.

Compliance Requirement Type	Action
Document →	Manual Plan Report Agreement Public License/Permit
Review →	Inspection Audit Surveillance Observation Testing Sampling
Exercise →	Training Drill Simulation
Notification →	NOTAM FAA Public Staff Agreement Air Carriers Permit
Condition →	Facility Vehicle Equipment Staffing
Other →	Other (specify)

Frequency Type	Interval or Event
Continuously	N/A
Periodic →	Daily Weekly Monthly Quarterly Semi-annually Annually Biannually Triannually Other (specify)
Trigger →	Event Other (specify) N/A

# ACRP

## AIRPORT COOPERATIVE RESEARCH PROGRAM



*Lists Tab – Modify*

# ACRP

## AIRPORT COOPERATIVE RESEARCH PROGRAM

1	A	B	C	Action						J	Interval or Event		
				D	E	F	G	H	I		K	L	M
	Type	Department, Agency, or Office	Compliance Requirement Type	Document	Review	Exercise	Notification	Condition	Other	Frequency Type	Continuously	Periodic	Trigger
2													
3													
4	Federal	DA	Document	Manual	Inspection	Training	NOTAM	Facility	Other (specify)	Continuously	N/A	Daily	Event
5	State	DHS	Review	Plan	Audit	Drill	FAA	Vehicle		Periodic		Weekly	Other (specify)
6	Local	DOD	Exercise	Report	Surveillance	Simulation	Public	Equipment		Trigger		Monthly	N/A
7		DOE	Notification	Agreement	Observation		Staff	Staff				Quarterly	
8		DOJ	Condition	Public	Testing		Agreement					Semi-annually	
9		DOJ	Staff	License/Permit	Sampling		Air Carriers					Annually	
10		DOL	Other				Permit					Biannually	
11		DOT										Triannually	
12		EPA										Other (specify)	
13		FAA											
14		FCC											
15		FPM											
16		HUD											
17		OMB											
18		OPM											
19		OSHA											
20		TSA											
21		U.S.C.											
22													
23													
24													
25													
26													
27													
28													
29													
30													

Refresh dropdowns to reflect updates to this tab



# RCM Tool Implementation

## *Benefits*

- Implementation of the RCM Tool leads to:
  - Sharing of vital information and essential knowledge
  - Fostering collaboration and innovation
  - Improvement of efficiency and productivity across all functional areas of the airport

Knowledge is not power.

Implementation of knowledge is power.

Unknown

# ACRP

AIRPORT  
COOPERATIVE  
RESEARCH  
PROGRAM



# RCM Tool Implementation *Limitations*

- The RCM Tool, by itself, is not a CMS
- RCM Tool does not establish:
  - Compliance policy
  - Compliance management and oversight plan
  - Compliance goals, objectives, and action plans
- RCM Tool contains information and features to help track and manage compliance with federal (and state and local) regulations

**ACRP**

AIRPORT  
COOPERATIVE  
RESEARCH  
PROGRAM

# RCM Tool Implementation

## *Implementation Approach*

- Implementation of the RCM Tool should answer the following questions:
  - Who will be responsible for managing and using?
  - What are the airport functional areas and who is the responsible party for compliance in each?
  - What regulations will be tracked and managed?
  - Who, what, when, where, why, and how was compliance last accomplished?
  - What are the methods and techniques to integrate the RCM Tool into the regulation compliance efforts at the airport?

# RCM Tool Implementation

## *RCM Tool Manager*

- Individual designated to oversee compliance efforts
- Oversee the use and implementation of RCM Tool
  - Integrate use of RCM Tool into CMS action plans
  - Assign RCM Tool user
  - Coordinate with airport functional areas (training, identification of regulations, and collection of resources)
  - Coordinate distribution of Quick Reference Guides and Master Schedules
  - Implement Plan, Do, Check Act process

**ACRP**

AIRPORT  
COOPERATIVE  
RESEARCH  
PROGRAM

# RCM Tool Implementation

## *RCM Tool User*

**ACRP**

**AIRPORT  
COOPERATIVE  
RESEARCH  
PROGRAM**

- Individual responsible for learning
  - Full functionality of RCM Tool and managing content
  - Generating Quick Reference Guides and Master Schedules
- Specific responsibilities include:
  - Deleting existing non-applicable federal regulations
  - Add new applicable federal regulations and additional information
  - Identify impacts to functional areas
  - Monitor changes to tracked regulations
  - Update compliance completion dates and due dates

# RCM Tool Implementation

## *Past Compliance Actions*

- Incorporate past compliance actions into the RCM Tool
  - Who – is responsible
  - What – is the compliance requirement?
  - When – was the last time compliance was accomplished and when is the next due date (if applicable)?
  - Where – is the impact (which functional area)
  - How – was compliance accomplished

**ACRP**

AIRPORT  
COOPERATIVE  
RESEARCH  
PROGRAM

# RCM Tool Implementation

## *Integration of RCM Tool*

- Integration of RCM Tool into CMS allows:
  - Tracking and management of individual regulations
  - Where compliance team members of multiple functional areas can be involved in the compliance steps of specific regulations
  - Where compliance with multiple regulations can be accomplished with completion of a common compliance requirement

**ACRP**

AIRPORT  
COOPERATIVE  
RESEARCH  
PROGRAM

## RCM Tool Implementation *Multiple Regulations*

- RCM Tool manager should distribute Quick Reference Guides and Master Schedules
- Provides opportunity for functional area compliance members to coordinate compliance activities

Impacts (on other functional areas/responsible departments):							
Development		Operations		Management		Properties	
-Planning:	No	-Airside:	Yes	-Governance:	No	-Airside:	Yes
-Engineering:	No	-Landside:	No	-Administration:	No	-Landside:	No
-Construction:	No	-Environmental:	No	-Legal:	No	-Airlines:	Yes
		-Safety/Security:	Yes	-Finance/Accounting:	No	-Concessions:	No
		-Maintenance:	No	-Risk Management:	No	-General Aviation:	Yes
						-Land Use:	No

Master Schedule			
Compliance Due Date:	3/5/2016	<input type="checkbox"/>	Assigned To:
Citation:	§139.323 (a)	Development:	No
		Operations:	Yes
		Management:	No
		Properties:	Yes

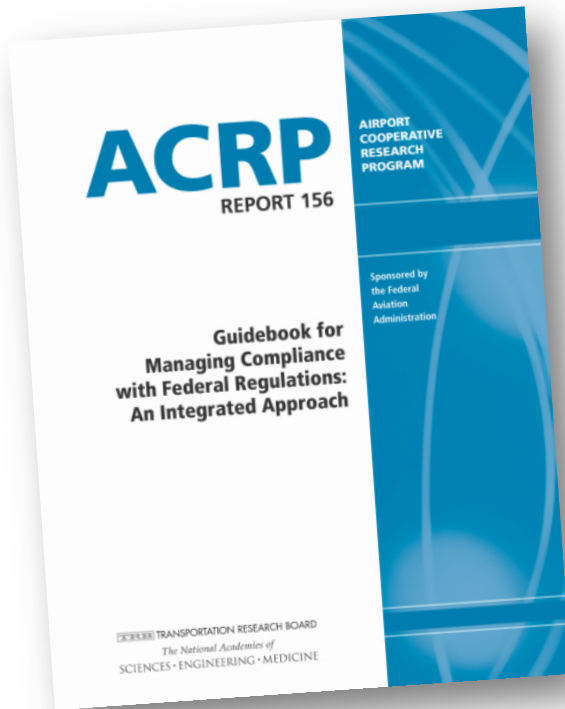


## RCM Tool Implementation

### *Compliance Scenarios - Environmental*

- Spill Prevention Control and Countermeasures (SPCC)
  - Determine if facility and/or tenants must comply
  - Identify which airport functional areas involved and who is responsible for the compliance activity
- Example: Small GA Airport
  - Limited airport staff
  - Airport operates multiple fuel tanks
  - One FBO with a fuel farm and two refueling trucks
- RCM Tool solution:
  - Identifies need and number of SPCC Plans
  - Allows scheduling for inspections, trainings, and testing

# For additional information:



## ACRP Report 156

### *A Guidebook for the Managing Compliance with Federal Regulations: An Integrated Approach*

- Jeff Kohlman
  - [jkohlman@aviationmanagement.com](mailto:jkohlman@aviationmanagement.com)

<http://www.trb.org/Publications/Blurbs/174389.aspx>

# ACRP

AIRPORT  
COOPERATIVE  
RESEARCH  
PROGRAM

# Today's Participants

- David Full, *RS&H*, [david.full@rsandh.com](mailto:david.full@rsandh.com)
- Jeff Kohlman, *Aviation Management Consulting Group, Inc.*,  
[jkohlman@aviationmanagement.com](mailto:jkohlman@aviationmanagement.com)
- David Benner, *Aviation Management Consulting Group, Inc.*,  
[dbenner@aviationmanagement.com](mailto:dbenner@aviationmanagement.com)

# Panelists Presentations

<http://onlinepubs.trb.org/onlinepubs/webinars/170725.pdf>

*After the webinar, you will receive a follow-up email containing a link to the recording*

# Get Involved in ACRP

- Submit a research idea to ACRP.
- Volunteer to participate on a project panel.
- Prepare a proposal to conduct research.
- Get involved in TRB's Aviation Group of committees.
- Take part in the Champion or Ambassador Programs.

For more information:

<http://www.trb.org/acrp/acrp.aspx>